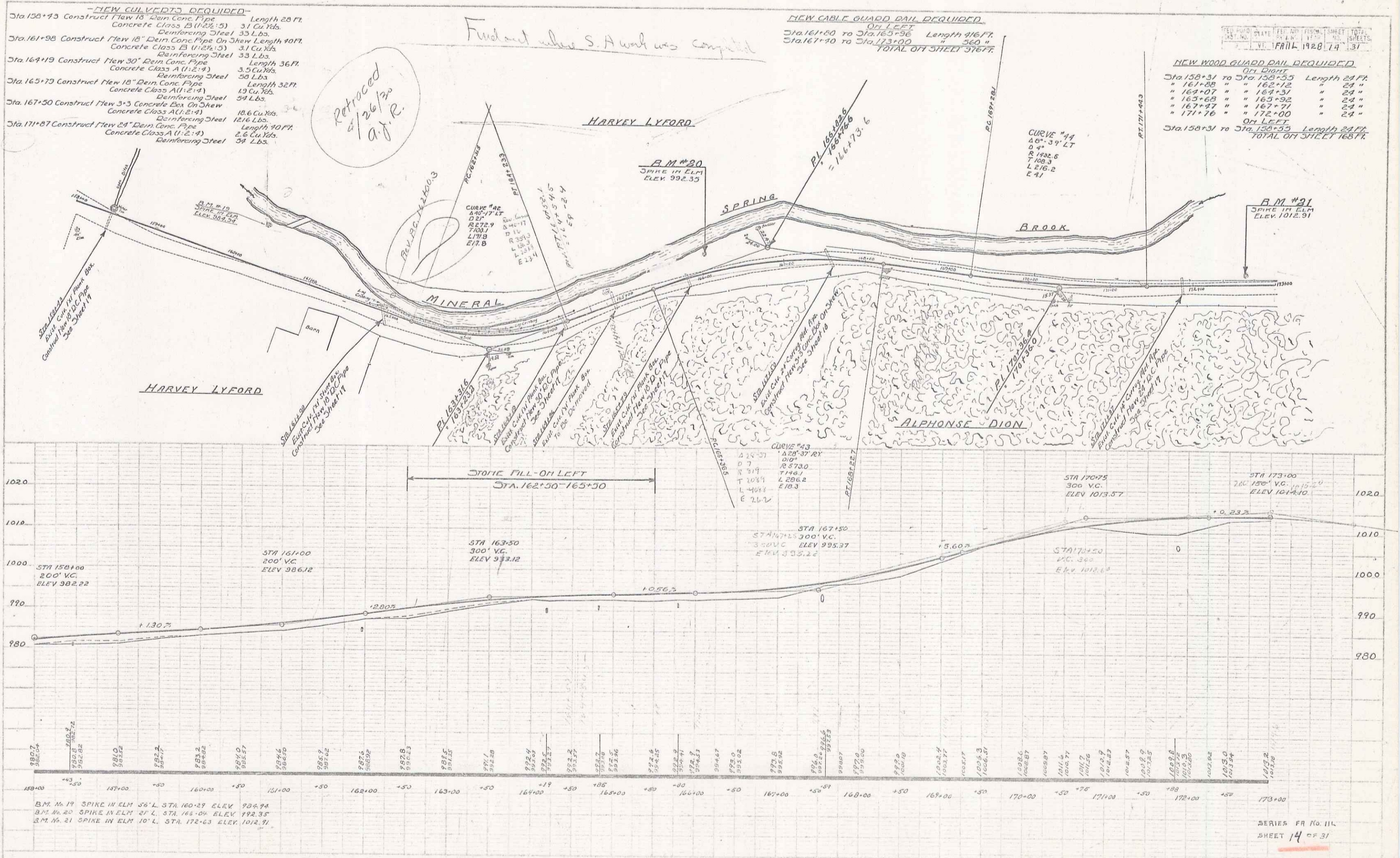


- NEW CULVERTS REQUIRED**
- Sta. 158+43 Construct New 18" Rein Conc Pipe Length 28 Ft.
Concrete Class B (1:2:3) 31 Cu Yds.
Reinforcing Steel 33 Lbs.
 - Sta. 161+98 Construct New 18" Rein Conc Pipe On Shew Length 90 Ft.
Concrete Class B (1:2:3) 31 Cu Yds.
Reinforcing Steel 33 Lbs.
 - Sta. 164+19 Construct New 30" Rein Conc Pipe Length 36 Ft.
Concrete Class A (1:2:4) 3.5 Cu Yds.
Reinforcing Steel 39 Lbs.
 - Sta. 165+79 Construct New 18" Rein Conc Pipe Length 32 Ft.
Concrete Class A (1:2:4) 13 Cu Yds.
Reinforcing Steel 39 Lbs.
 - Sta. 167+30 Construct New 3-3 Concrete Box On Shew
Concrete Class A (1:2:4) 18.6 Cu Yds.
Reinforcing Steel 1816 Lbs.
 - Sta. 171+87 Construct New 24" Rein Conc Pipe Length 40 Ft.
Concrete Class A (1:2:4) 2.6 Cu Yds.
Reinforcing Steel 34 Lbs.

NEW CABLE GUARD RAIL REQUIRED
Sta. 161+60 to Sta. 163+96 Length 96 Ft.
Sta. 167+30 to Sta. 173+00 " 360 "
TOTAL OFF SHEET 316 FT.

NEW WOOD GUARD RAIL REQUIRED
Sta. 158+31 to Sta. 158+55 Length 24 Ft.
Sta. 161+88 " " 162+12 " 24 "
Sta. 163+07 " " 164+31 " 24 "
Sta. 163+63 " " 165+52 " 24 "
Sta. 167+27 " " 167+71 " 24 "
Sta. 171+76 " " 172+00 " 24 "
TOTAL OFF SHEET 168 Ft.



B.M. No. 19 SPIKE IN ELM 56' L. STA. 160+29 ELEV. 994.94
B.M. No. 20 SPIKE IN ELM 21' L. STA. 166+04 ELEV. 992.35
B.M. No. 21 SPIKE IN ELM 10' L. STA. 172+63 ELEV. 1012.91