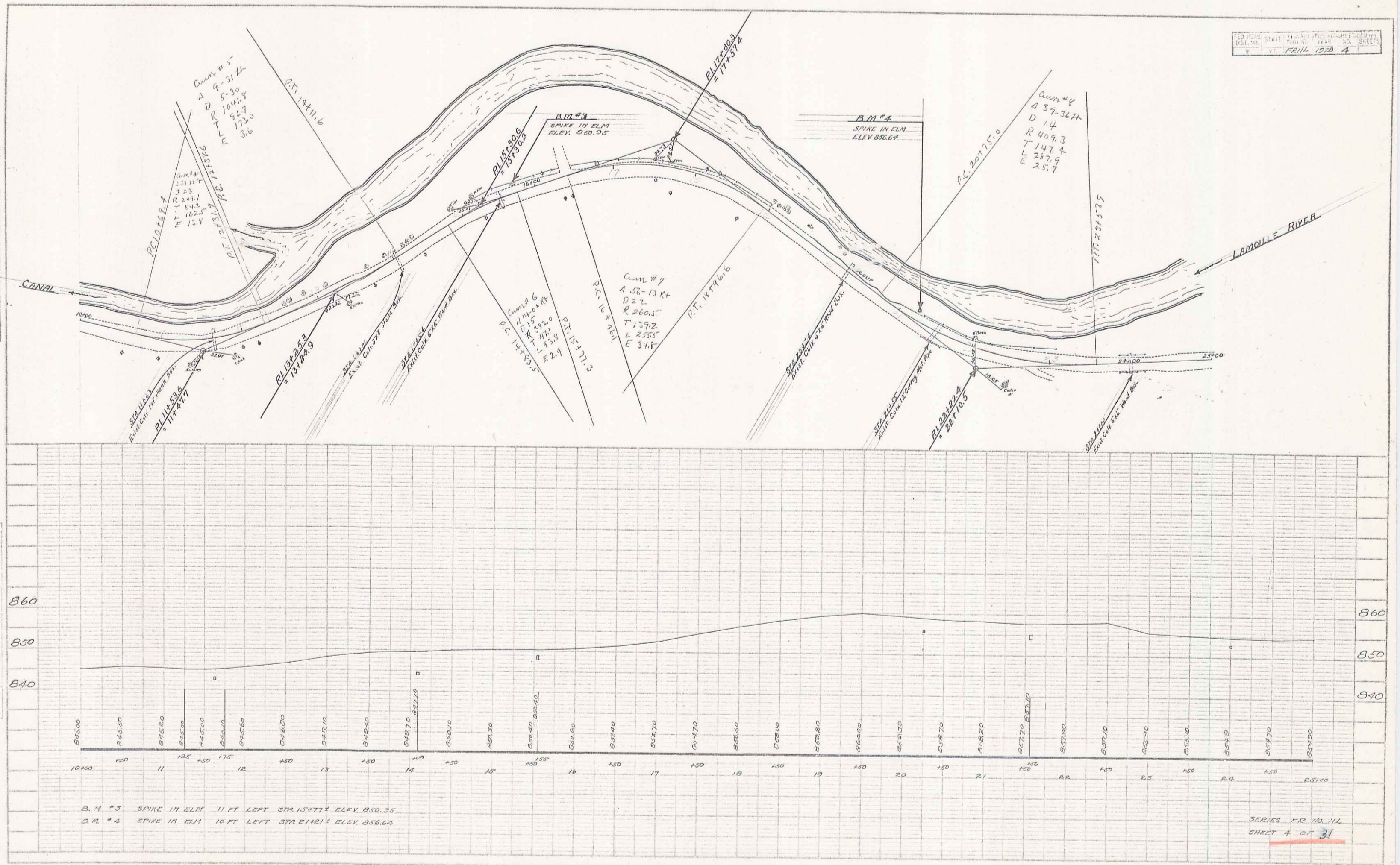


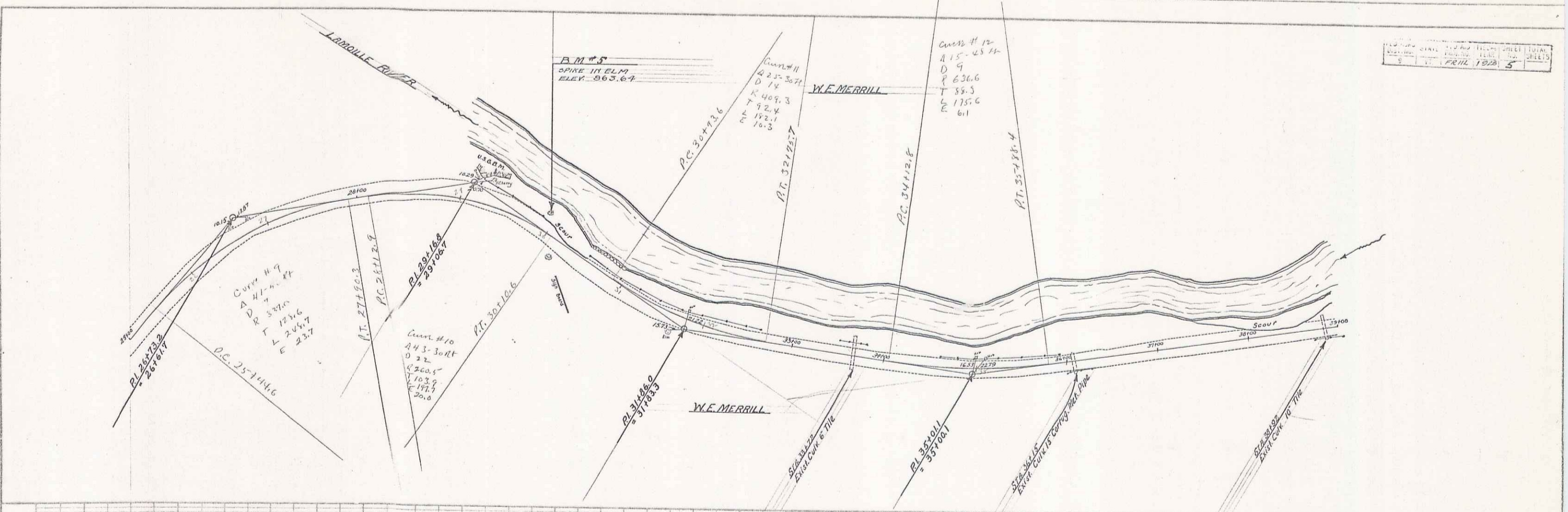
PLAN
 1528
 DOE KINGHALL 1928

PROFILE
 1528
 DOE BOOLE POOLE 1928



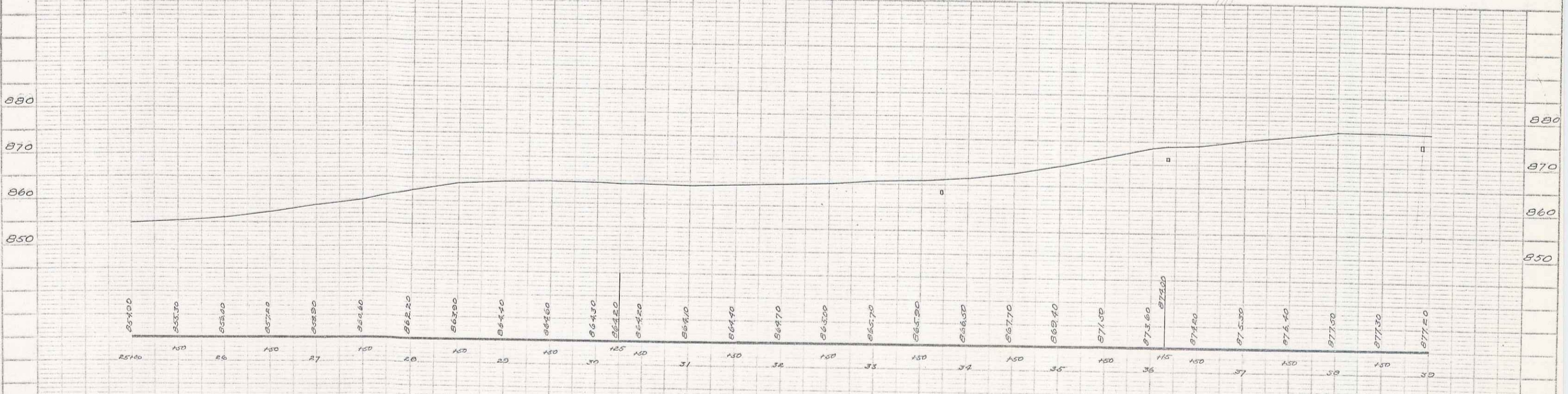
SERIES FOR NO. 114
 SHEET 4 OF 31

DATE	APRIL 1928
SHEET	5
TOTAL SHEETS	31



PLAN
 DATE BOOK
 1928
 1928
 1928

PROF. LE...
 1928
 1928



B.M. #5 SPIKE IN ELM 21 FT. LEFT OF STA. 20+001 ELEV. 863.64
 U.S. G.S. TABLE IN BOULDER 34 FT. LEFT OF STA. 20+253 ELEV. 868.17

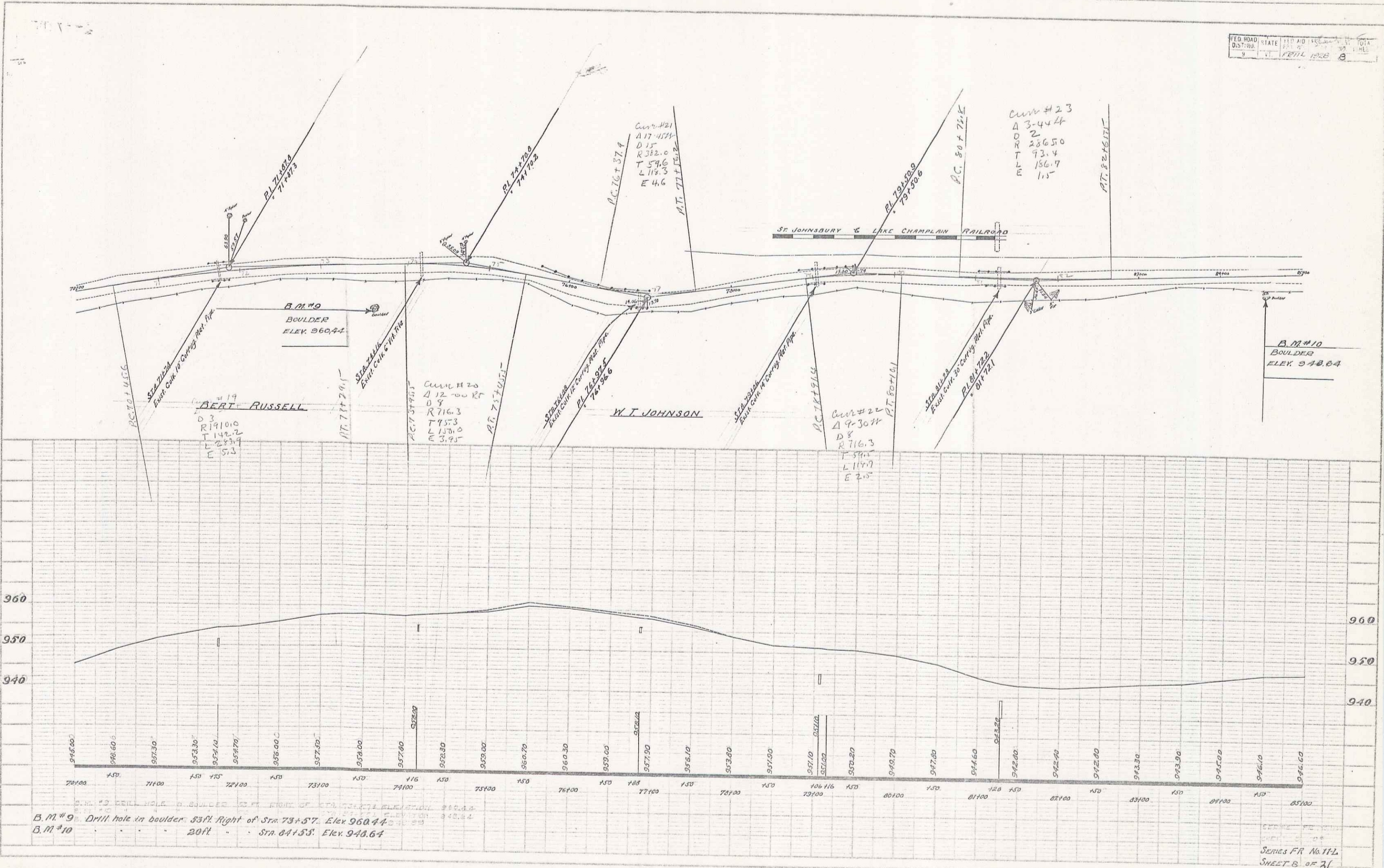
SERIES P.R. NO. 111
 SHEET 5 OF 31

PLANS & PROFILES
 W.F. MERRILL

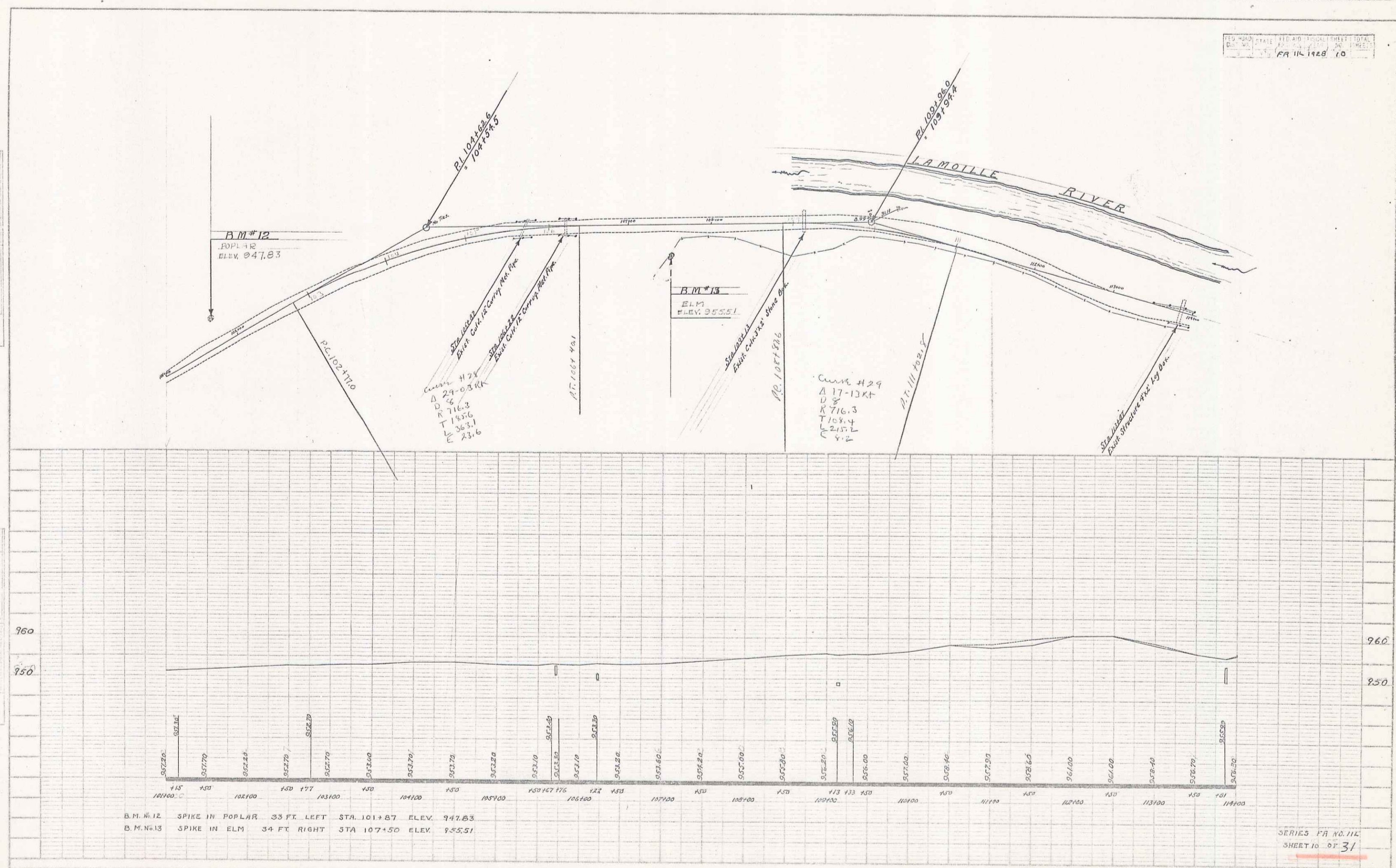
3

PLAN
DATE
1928

PLAN
DATE
1928



B.M.#9 - Drill hole in boulder 83ft. right of Sta. 73+57. Elev. 960.44
 B.M.#10 - 20ft. Sta. 81+53. Elev. 948.64



B.M. #12 SPIKE IN POPLAR 33 FT LEFT STA. 101+87 ELEV. 947.83
 B.M. #13 SPIKE IN ELM 34 FT RIGHT STA 107+50 ELEV. 955.51

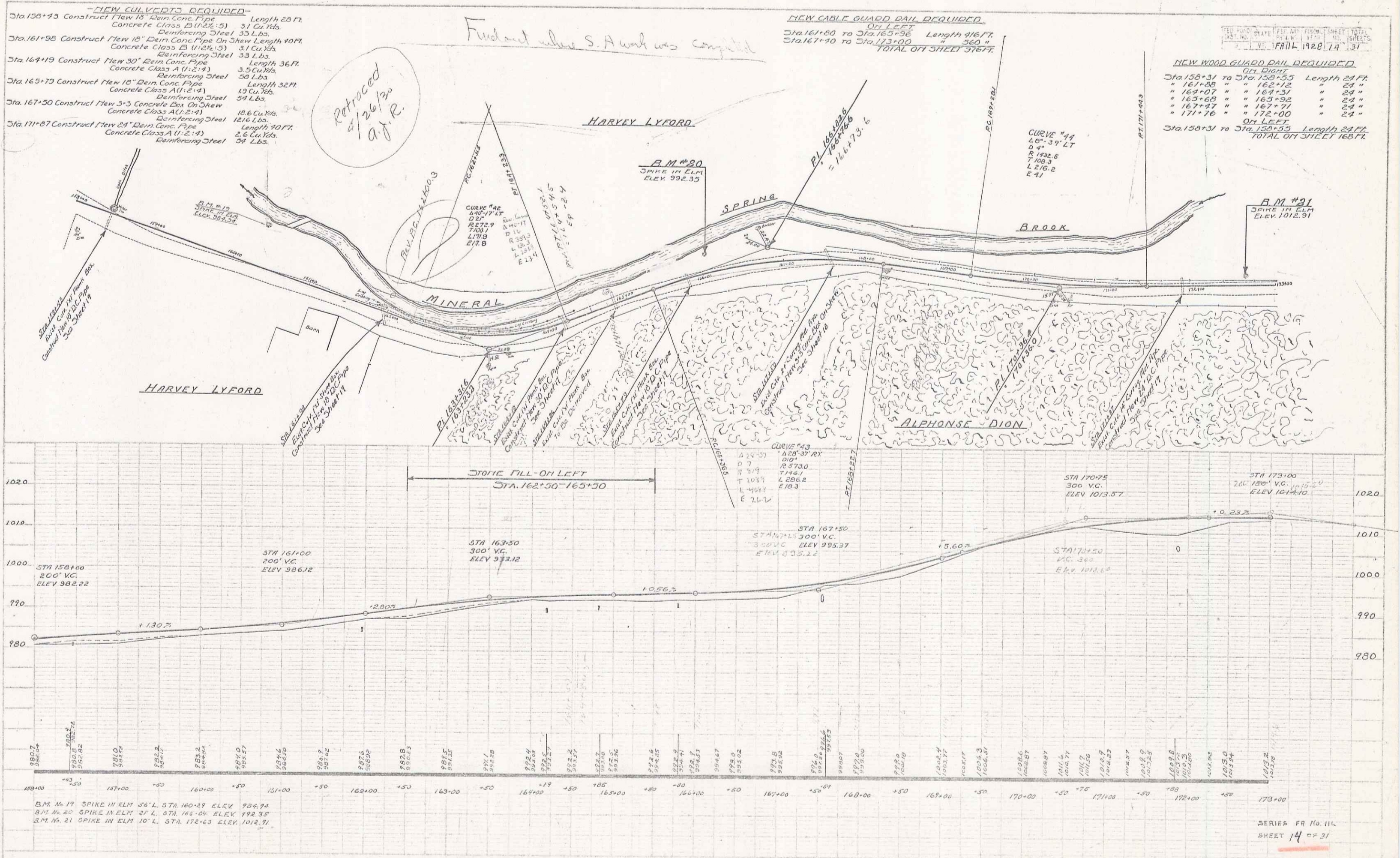
PLATE 2-17-101 POPULAR & ELM BENCH MARKS
 DRAWN BY S. J. MOSS STATE ENGINEER

- NEW CULVERTS REQUIRED**
- Sta. 158+43 Construct New 18" Rein Conc Pipe Length 28 FT.
Concrete Class B (1:2:3) 31 Cu Yds.
Reinforcing Steel 33 Lbs.
 - Sta. 161+98 Construct New 18" Rein Conc Pipe On Shew Length 90 FT.
Concrete Class B (1:2:3) 31 Cu Yds.
Reinforcing Steel 33 Lbs.
 - Sta. 164+19 Construct New 30" Rein Conc Pipe Length 36 FT.
Concrete Class A (1:2:4) 3.5 Cu Yds.
Reinforcing Steel 39 Lbs.
 - Sta. 165+79 Construct New 18" Rein Conc Pipe Length 32 FT.
Concrete Class A (1:2:4) 13 Cu Yds.
Reinforcing Steel 39 Lbs.
 - Sta. 167+30 Construct New 3-3 Concrete Box On Shew
Concrete Class A (1:2:4) 18.6 Cu Yds.
Reinforcing Steel 1816 Lbs.
 - Sta. 171+87 Construct New 24" Rein Conc Pipe Length 40 FT.
Concrete Class A (1:2:4) 2.6 Cu Yds.
Reinforcing Steel 34 Lbs.

NEW CABLE GUARD RAIL REQUIRED
 Sta. 161+60 to Sta. 163+96 Length 96 FT.
 Sta. 167+90 to Sta. 173+00 " 360 "
TOTAL OFF SHEET 316 FT.

NEW WOOD GUARD RAIL REQUIRED
 On Right
 Sta. 158+31 to Sta. 158+55 Length 24 FT.
 " 161+88 " " 162+12 " 24 "
 " 162+07 " " 162+31 " 24 "
 " 163+69 " " 163+92 " 24 "
 " 167+27 " " 167+51 " 24 "
 " 171+76 " " 172+00 " 24 "
 On Left
 Sta. 158+31 to Sta. 158+55 Length 24 FT.
TOTAL ON SHEET 168 FT.

DATE	BY	REV.	DESCRIPTION
1928	14	31	FRANK



B.M. No. 19 SPIKE IN ELM 56' L. STA. 160+29 ELEV. 994.94
 B.M. No. 20 SPIKE IN ELM 21' L. STA. 166+09 ELEV. 992.35
 B.M. No. 21 SPIKE IN ELM 10' L. STA. 172+63 ELEV. 1012.91

SERIES FR No. 111
 SHEET 14 OF 31

11

NEW CULVERTS REQUIRED

Sta. 175+00 18" Reinf. Conc. Pipe, 36 ft long
 Conc. Class B (1-2-5) 3.1 cu. yds.
 Reinf. Steel 33 lbs.

Sta. 177+25 18" Reinf. Conc. Pipe, 32 ft long
 Conc. Class A (1-2-4) 0.9 cu. yds.
 Reinf. Steel 14 lbs.

Sta. 180+72 24" Reinf. Conc. Pipe, 32 ft long
 Conc. Class A (1-2-4) 2.6 cu. yds.
 Reinf. Steel 34 lbs.

Sta. 182+22 18" Reinf. Conc. Pipe, 32 ft long
 Conc. Class B (1-2-5) 3.1 cu. yds.
 Reinf. Steel 33 lbs.

Sta. 183+75 18" Reinf. Conc. Pipe, 32 ft long
 Conc. Class B (1-2-5) 3.1 cu. yds.
 Reinf. Steel 33 lbs.

Sta. 184+95 4x3 Reinf. Conc. Box
 Conc. Class A (1-2-4) 12.7 cu. yds.
 Reinf. Steel 1152 lbs.

NEW CABLE GUARD RAIL REQUIRED

ON LEFT
 Sta. 173+00 to Sta. 177+00 Length 400 FT
 Sta. 180+00 to Sta. 183+00 " 300 "

TOTAL ON SHEET 700 FT.

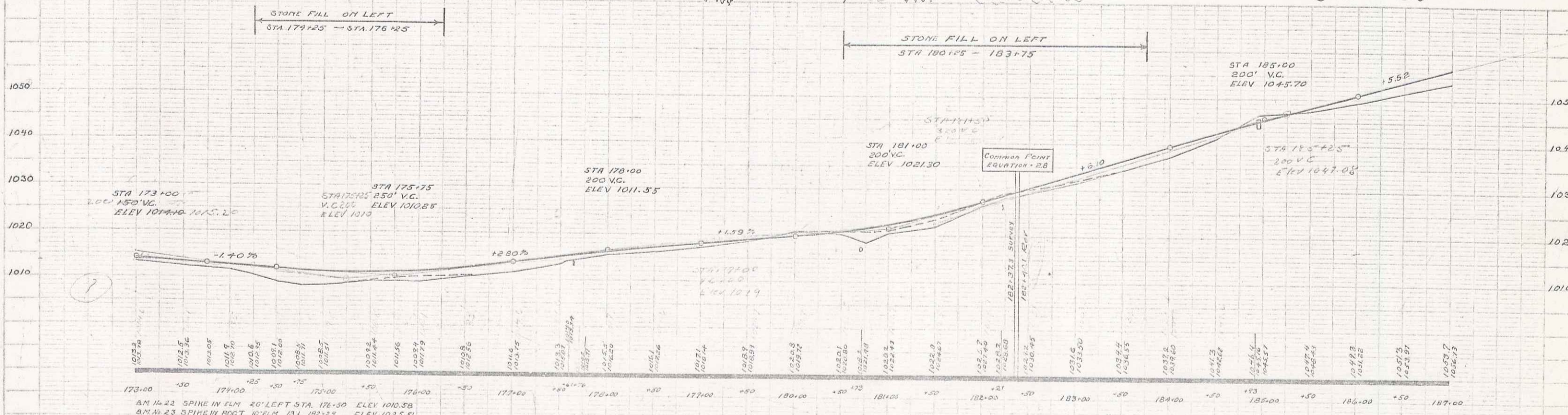
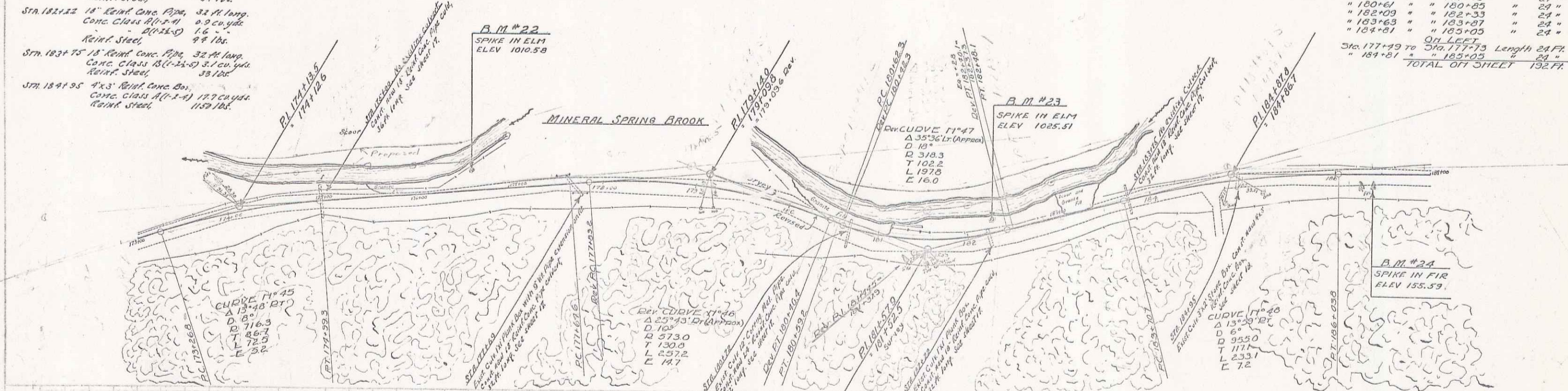
FED. ROAD DIST. NO.	STATION	DATE	DESIGNER	SCALE	SHEET NO.	TOTAL SHEETS
		APRIL 1928			15	31

NEW WOOD GUARD RAIL REQUIRED

ON RIGHT
 Sta. 174+05 to Sta. 175+15 Length 24 FT
 " 177+55 " " 177+75 " 24 "
 " 180+45 " " 180+65 " 24 "
 " 182+05 " " 182+25 " 24 "
 " 183+65 " " 183+85 " 24 "
 " 184+85 " " 185+05 " 24 "

ON LEFT
 Sta. 177+45 to Sta. 177+75 Length 24 FT
 " 184+85 " " 185+05 " 24 "

TOTAL ON SHEET 132 FT.



B.M. #22 SPIKE IN ELM 20' LEFT STA. 176+50 ELEV 1010.58
 B.M. #23 SPIKE IN ELM 10' LEFT STA. 182+25 ELEV 1025.51
 B.M. #24 SPIKE IN FIR 10' RIGHT STA. 186+39 ELEV 1055.59

SERIES FROM ILL
 SHEET 15 OF 31

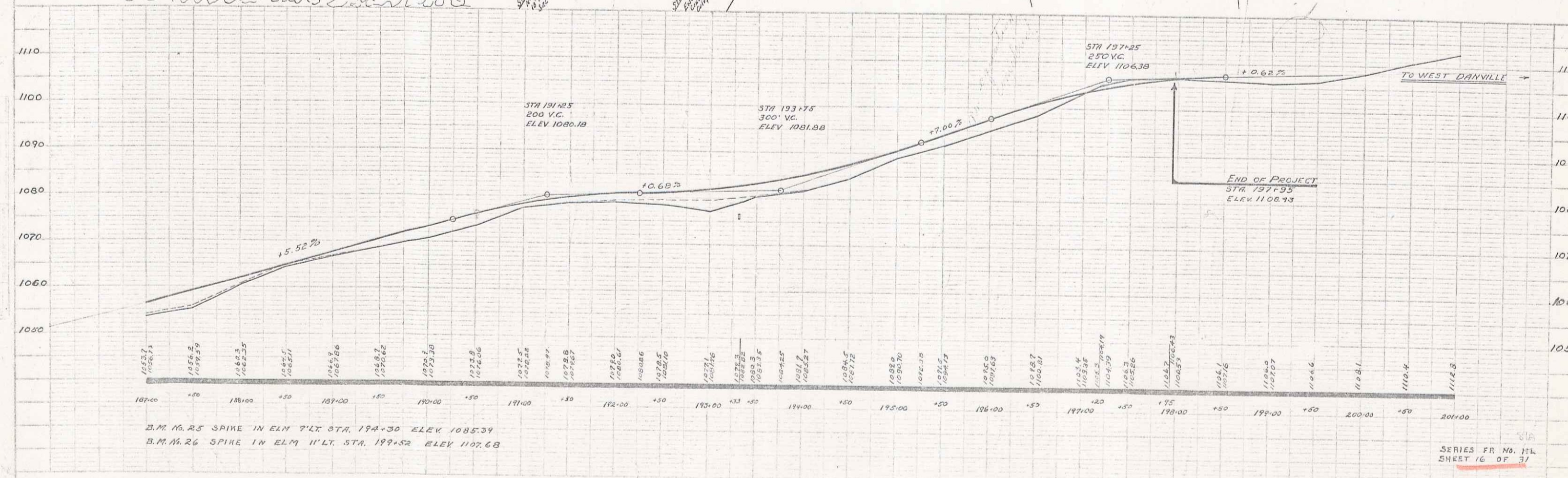
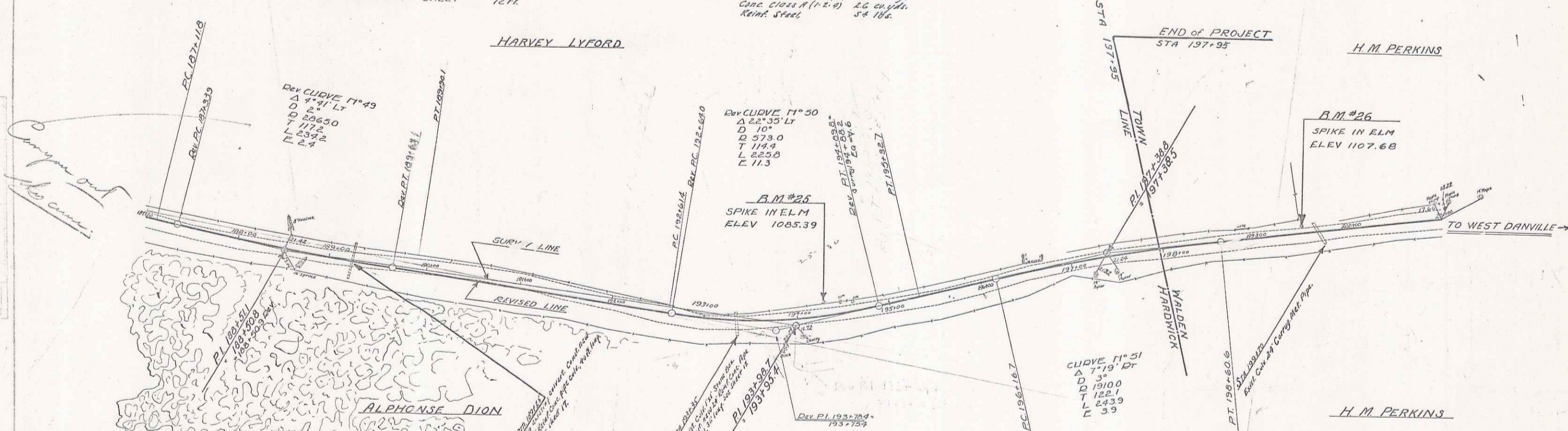
12

NEW CABLE GUARD RAIL REQUIRED
 ON LEFT
 Sta. 191+80 to Sta. 193+48 Length 168 FT.

NEW WOOD GUARD RAIL REQUIRED
 ON LEFT
 Sta. 189+13 to Sta. 193+37 Length 297 FT.
 ON RIGHT
 Sta. 189+13 to Sta. 193+37 Length 297 FT.
 TOTAL OF SHEET 594 FT.

NEW CULVERTS REQUIRED
 Sta. 189+25 18" Round Conc. Pipe, 40 ft. long,
 Conc. Class B (1-2x-5) 3.1 cu yds.
 Reinf. Steel, 33 lbs.
 Sta. 193+25 24" Round Conc. Pipe, 36 ft. long,
 Conc. Class A (1-2-4) 2.6 cu yds.
 Reinf. Steel, 54 lbs.

FED. ROAD STATE HIGHWAY DIST. NO. 111 FRUIT 1928 16 SHEET TOTAL 31



B.M. #25 SPIKE IN ELM 7' LT. STA. 191+30 ELEV 1085.39
 B.M. #26 SPIKE IN ELM 11' LT. STA. 193+52 ELEV 1107.68

SERIES FR NO. 111
 SHEET 16 OF 31