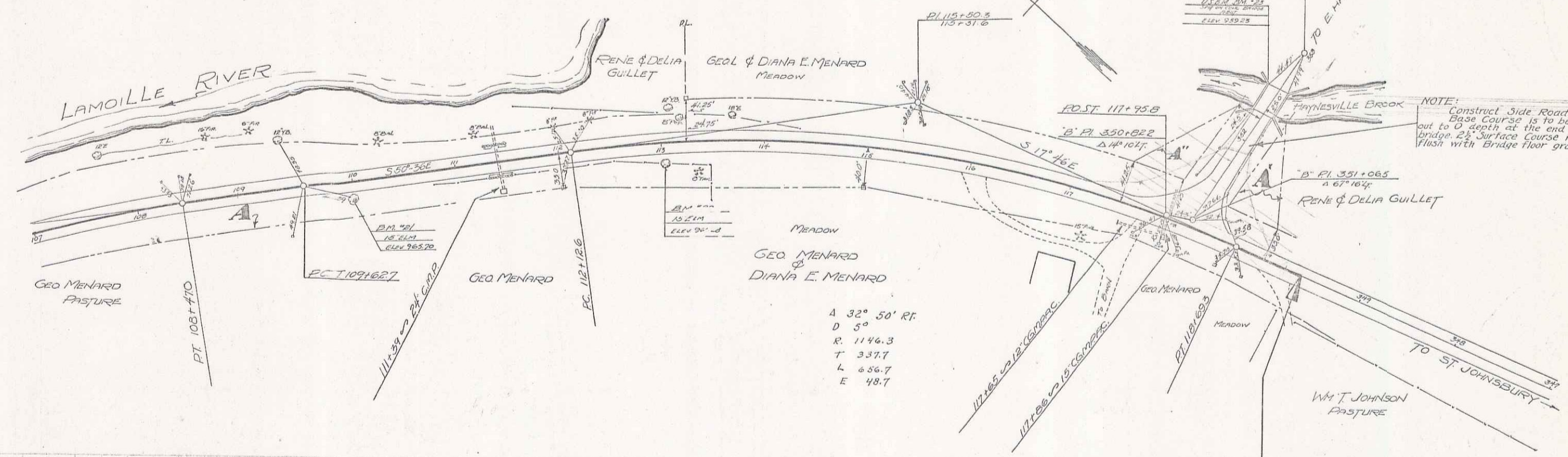


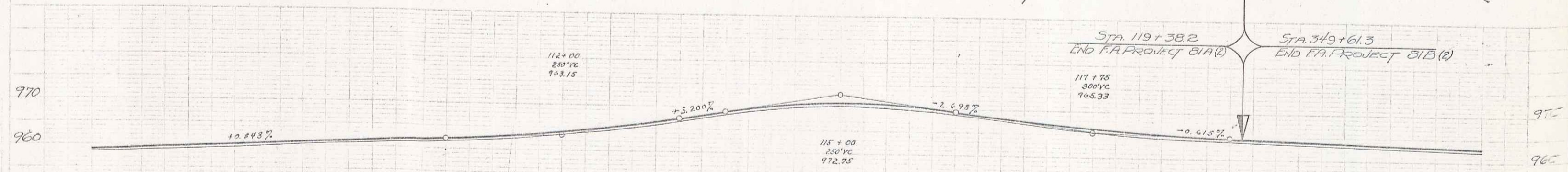
Parcel, Kind of Improvement	Date of Survey	Grantor	Grantee	Recorder	Hardwick	Book	Page	Date	Remarks
A	G.C.D.	2-12-37	Geo. L. Diana Menard	St. John	41	167-08	218-37		
A'	G.C.D.	5-26-38	René & Delia Gullet	"	41	19	5-5-38		
A''	G.C.D.	6-3-38	Geo. L. & Diana Menard	"	41	21	6-7-38		

81AW 1940 9 11



A 32° 50' 00" RT
 D 5°
 R 1146.3
 T 337.7
 L 656.7
 E 48.7

NOTE: Construct Side Road Approach Base Course to be 12' wide out to D aboth at the end of the bridge. 2' Surface Course is to be flush with Bridge floor grade.



Note: Grade raised slightly in order to conform with existing road bed. See Cross Sections

STA 107+00 - STA 112+50
 Foundation 1/2" 3" Crushed Gravel Base course varied to meet field conditions. See Cross Sections

STA 112+50 - STA 119+382
 1/2" Crushed Gravel Base Course Varied to meet field conditions. See Cross Sections

Station	Elevation	Station	Elevation	Station	Elevation	Station	Elevation	Station	Elevation	Station	Elevation	Station	Elevation	Station	Elevation	Station	Elevation	Station	Elevation	Station	Elevation
107	968.16	110	960.02	113	965.92	116	967.08	119	966.37	122	963.8	125	962.8	128	962.7	131	962.7	134	962.7	137	962.7
108	968.77	111	960.53	114	967.15	117	967.54	120	966.09	123	963.8	126	962.8	129	962.7	132	962.7	135	962.7	138	962.7
109	969.23	112	961.01	115	967.49	118	967.87	121	966.32	124	963.8	127	962.8	130	962.7	133	962.7	136	962.7	139	962.7
110	969.55	113	961.49	116	967.75	119	968.14	122	966.57	125	963.8	128	962.8	131	962.7	134	962.7	137	962.7	140	962.7
111	969.87	114	961.97	117	968.03	120	968.52	123	966.90	126	963.8	129	962.8	132	962.7	135	962.7	138	962.7	141	962.7
112	970.19	115	962.45	118	968.31	121	968.80	124	967.28	127	963.8	130	962.8	133	962.7	136	962.7	139	962.7	142	962.7
113	970.51	116	962.93	119	968.59	122	969.08	125	967.56	128	963.8	131	962.8	134	962.7	137	962.7	140	962.7	143	962.7
114	970.83	117	963.45	120	968.87	123	969.36	126	967.84	129	963.8	132	962.8	135	962.7	138	962.7	141	962.7	144	962.7
115	971.15	118	963.97	121	969.15	124	969.64	127	968.12	130	963.8	133	962.8	136	962.7	139	962.7	142	962.7	145	962.7
116	971.47	119	964.49	122	969.43	125	969.92	128	968.40	131	963.8	134	962.8	137	962.7	140	962.7	143	962.7	146	962.7
117	971.79	120	965.01	123	969.71	126	970.20	129	968.68	132	963.8	135	962.8	138	962.7	141	962.7	144	962.7	147	962.7
118	972.11	121	965.53	124	970.03	127	970.47	130	968.96	133	963.8	136	962.8	139	962.7	142	962.7	145	962.7	148	962.7
119	972.43	122	966.05	125	970.31	128	970.74	131	969.24	134	963.8	137	962.8	140	962.7	143	962.7	146	962.7	149	962.7
120	972.75	123	966.57	126	970.59	129	971.02	132	969.52	135	963.8	138	962.8	141	962.7	144	962.7	147	962.7	150	962.7
121	973.07	124	967.09	127	970.87	130	971.30	133	969.80	136	963.8	139	962.8	142	962.7	145	962.7	148	962.7	151	962.7
122	973.39	125	967.61	128	971.15	131	971.58	134	970.08	137	963.8	140	962.8	143	962.7	146	962.7	149	962.7	152	962.7
123	973.71	126	968.13	129	971.43	132	971.86	135	970.36	138	963.8	141	962.8	144	962.7	147	962.7	150	962.7	153	962.7
124	974.03	127	968.65	130	971.71	133	972.14	136	970.64	139	963.8	142	962.8	145	962.7	148	962.7	151	962.7	154	962.7
125	974.35	128	969.17	131	971.99	134	972.42	137	970.92	140	963.8	143	962.8	146	962.7	149	962.7	152	962.7	155	962.7
126	974.67	129	969.69	132	972.27	135	972.70	138	971.20	141	963.8	144	962.8	147	962.7	150	962.7	153	962.7	156	962.7
127	974.99	130	970.21	133	972.55	136	972.98	139	971.48	142	963.8	145	962.8	148	962.7	151	962.7	154	962.7	157	962.7
128	975.31	131	970.73	134	972.83	137	973.26	140	971.76	143	963.8	146	962.8	149	962.7	152	962.7	155	962.7	158	962.7
129	975.63	132	971.25	135	973.11	138	973.54	141	972.04	144	963.8	147	962.8	150	962.7	153	962.7	156	962.7	159	962.7
130	975.95	133	971.77	136	973.39	139	973.82	142	972.32	145	963.8	148	962.8	151	962.7	154	962.7	157	962.7	160	962.7
131	976.27	134	972.29	137	973.67	140	974.10	143	972.60	146	963.8	149	962.8	152	962.7	155	962.7	158	962.7	161	962.7
132	976.59	135	972.81	138	973.95	141	974.38	144	972.88	147	963.8	150	962.8	153	962.7	156	962.7	159	962.7	162	962.7
133	976.91	136	973.33	139	974.23	142	974.66	145	973.16	148	963.8	151	962.8	154	962.7	157	962.7	160	962.7	163	962.7
134	977.23	137	973.85	140	974.51	143	974.94	146	973.44	149	963.8	152	962.8	155	962.7	158	962.7	161	962.7	164	962.7
135	977.55	138	974.37	141	974.79	144	975.22	147	973.72	150	963.8	153	962.8	156	962.7	159	962.7	162	962.7	165	962.7
136	977.87	139	974.89	142	975.07	145	975.50	148	974.00	151	963.8	154	962.8	157	962.7	160	962.7	163	962.7	166	962.7
137	978.19	140	975.41	143	975.35	146	975.78	149	974.28	152	963.8	155	962.8	158	962.7	161	962.7	164	962.7	167	962.7
138	978.51	141	975.93	144	975.63	147	976.06	150	974.56	153	963.8	156	962.8	159	962.7	162	962.7	165	962.7	168	962.7
139	978.83	142	976.45	145	975.91	148	976.34	151	974.84	154	963.8	157	962.8	160	962.7	163	962.7	166	962.7	169	962.7
140	979.15	143	976.97	146	976.19	149	976.62	152	975.12	155	963.8	158	962.8	161	962.7	164	962.7	167	962.7	170	962.7
141	979.47	144	977.49	147	976.47	150	976.90	153	975.40	156	963.8	159	962.8	162	962.7	165	962.7	168	962.7	171	962.7
142	979.79	145	978.01	148	976.75	151	977.18	154	975.68	157	963.8	160	962.8	163	962.7	166	962.7	169	962.7	172	962.7
143	980.11	146	978.53	149	977.03	152	977.46	155	975.96	158	963.8	161	962.8	164	962.7	167	962.7	170	962.7	173	962.7
144	980.43	147	979.05	150	977.31	153	977.74	156	976.24	159	963.8	162	962.8	165	962.7	168	962.7	171	962.7	174	962.7
145	980.75	148	979.57	151	977.59	154	978.02	157	976.52	160	963.8	163	962.8	166	962.7	169	962.7	172	962.7	175	962.7
146	981.07	149	980.09	152	977.87	155	978.30	158	976.80	161	963.8	164	962.8	167	962.7	170	962.7	173	962.7	176	962.7
147	981.39	150	980.61	153	978.15	156	978.58	159	977.08	162	963.8	165	962.8	168	962.7	171	962.7	174	962.7	177	962.7
148	981.71	151	981.13	154	978.43	157	978.86	160	977.36	163	963.8	166	962.8	169	962.7	172	962.7	175	962.7	178	962.7
149	982.03	152	981.65	155	978.71	158	979.14	161	977.64	164	963.8	167	962.8	170	962.7	173	962.7	176	962.7	179	962.7
150	982.35	153	982.17	156	978.99	159	979.42	162	977.92	165	963.8	168	962.8	171	962.7	174	962.7	177	962.7	180	962.7
151	982.67	154	982.69	157	979.27	160	979.70	163	978.20	166	963.8	169	962.8	172	962.7	175	962.7	178	962.7	181	962.7
152	982.99	155	983.21	158	979.55	161	979.98	164	978.48	167	963.8	170	962.8	173	962.7	176	962.7	179	962.7	182	962.7
153	983.31	156	983.73	159	979.83	162	980.26	165	978.76	168	963.8	171	962.8	174	962.7	177	962.7	180	962.7	183	962.7
154	983.63	157	984.25	160	980.11	163	980.54	166	979.04	169	963.8	172	962.8	175	962.7	178	962.7	181	962.7	184	962.7
155	983.95	158	984.77	161	980.39	164	980.82	167	979.32	170	963.8	173	962.8	176	962.7	179	962.7	182	962.7	185	962.7
156	984.27	159	985.29	162	980.67	165	981.10	168	979.60	171	963.8	174	962.8	177	962.7	180	962.7	183	962.7	186	962.7
157	984.59	160	985.81	163	980.95	166	981.38	169	979.88	172	963.8	175	962.8	178	962.7	181	962.7	184	962.7	187	962.7
158	984.91	161	986.33	164	981.23	167	981.66	170	980.16	173	963.8	176	962.8	179	962.7	182	962.7	185	962.7	188	962.7
159	985.23	162	986.85	165	981.51	168	981.94	171	980.44	174	963.8	177	962.8	180	962.7	183	962.7	186	962.7	189	962.7
160	985.55																				