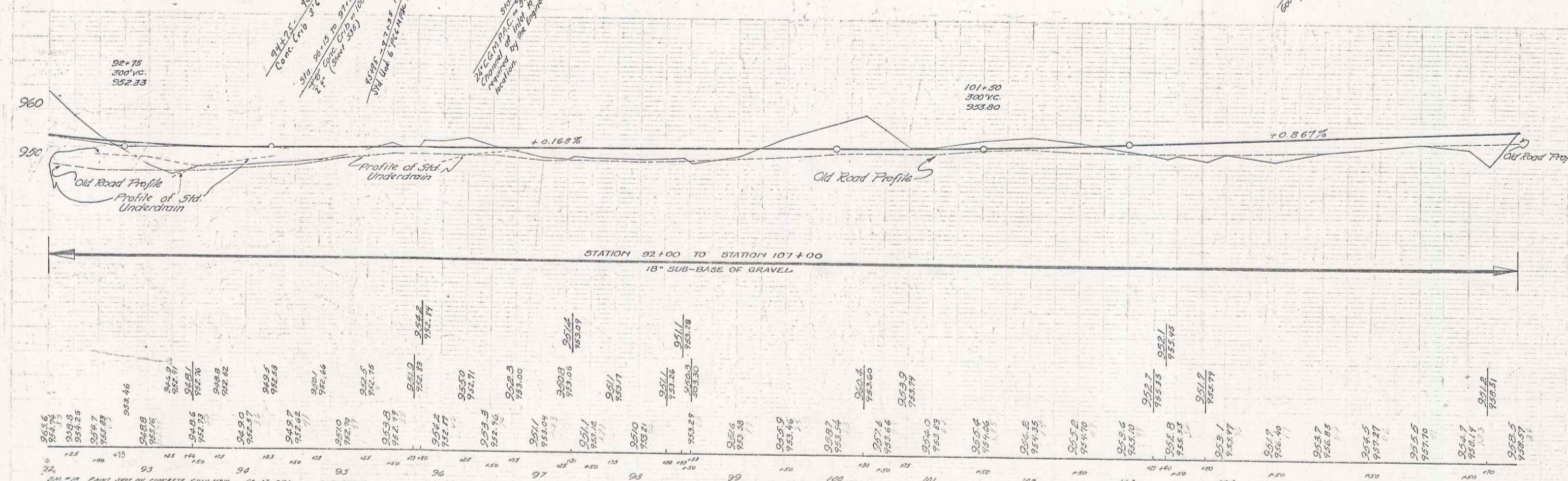
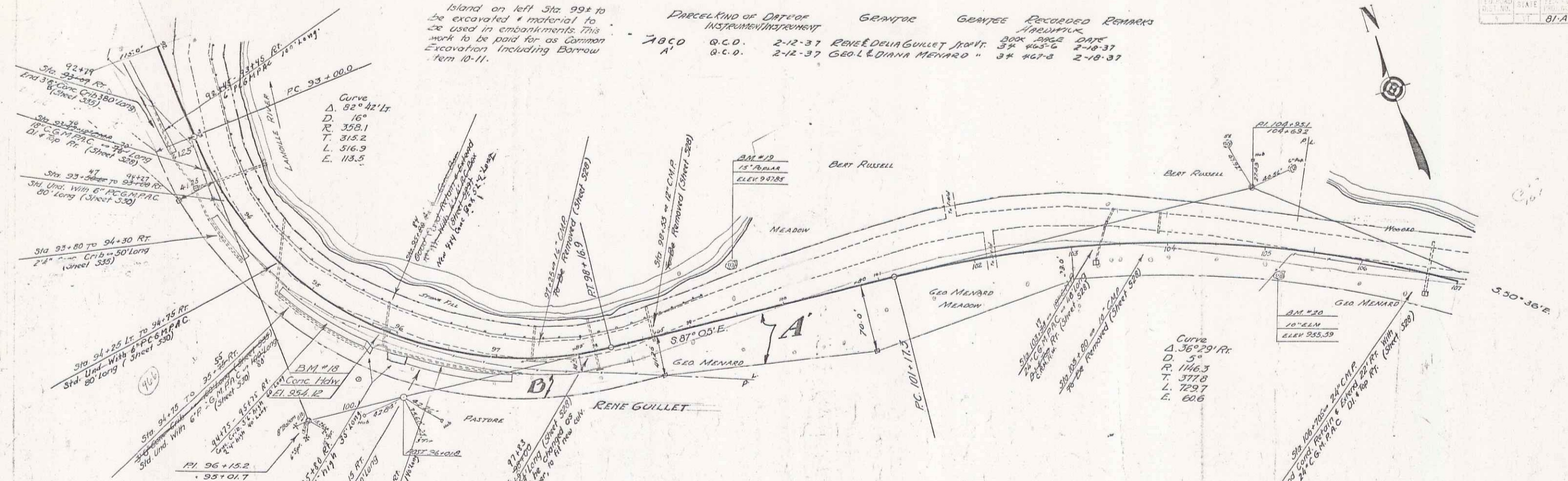


**NOTE**  
 Island on left Sta. 99+ to be excavated & material to be used in embankments. This work to be paid for as Common Excavation including Borrow Item 10-11.

**PARCEL KIND OF DATE OF GRANTEE GRANTEE RECORDED REMARKS**  
 ABCD Q.C.O. 2-12-37 RENE E DELIA GUILLET FRONT 300' 2-10-37  
 A' Q.C.O. 2-12-37 GEO. L. DIANA MENARD " 3\* 467-3 2-18-37



Station	Elevation
92+75	952.33
92+80	952.46
92+90	952.59
93+00	952.72
93+10	952.85
93+20	952.98
93+30	953.11
93+40	953.24
93+50	953.37
93+60	953.50
93+70	953.63
93+80	953.76
93+90	953.89
94+00	954.02
94+10	954.15
94+20	954.28
94+30	954.41
94+40	954.54
94+50	954.67
94+60	954.80
94+70	954.93
94+80	955.06
94+90	955.19
95+00	955.32
95+10	955.45
95+20	955.58
95+30	955.71
95+40	955.84
95+50	955.97
95+60	956.10
95+70	956.23
95+80	956.36
95+90	956.49
96+00	956.62
96+10	956.75
96+20	956.88
96+30	957.01
96+40	957.14
96+50	957.27
96+60	957.40
96+70	957.53
96+80	957.66
96+90	957.79
97+00	957.92
97+10	958.05
97+20	958.18
97+30	958.31
97+40	958.44
97+50	958.57
97+60	958.70
97+70	958.83
97+80	958.96
97+90	959.09
98+00	959.22
98+10	959.35
98+20	959.48
98+30	959.61
98+40	959.74
98+50	959.87
98+60	960.00
98+70	960.13
98+80	960.26
98+90	960.39
99+00	960.52
99+10	960.65
99+20	960.78
99+30	960.91
99+40	961.04
99+50	961.17
99+60	961.30
99+70	961.43
99+80	961.56
99+90	961.69
100+00	961.82
100+10	961.95
100+20	962.08
100+30	962.21
100+40	962.34
100+50	962.47
100+60	962.60
100+70	962.73
100+80	962.86
100+90	962.99
101+00	963.12
101+10	963.25
101+20	963.38
101+30	963.51
101+40	963.64
101+50	963.77
101+60	963.90
101+70	964.03
101+80	964.16
101+90	964.29
102+00	964.42
102+10	964.55
102+20	964.68
102+30	964.81
102+40	964.94
102+50	965.07
102+60	965.20
102+70	965.33
102+80	965.46
102+90	965.59
103+00	965.72
103+10	965.85
103+20	965.98
103+30	966.11
103+40	966.24
103+50	966.37
103+60	966.50
103+70	966.63
103+80	966.76
103+90	966.89
104+00	967.02
104+10	967.15
104+20	967.28
104+30	967.41
104+40	967.54
104+50	967.67
104+60	967.80
104+70	967.93
104+80	968.06
104+90	968.19
105+00	968.32
105+10	968.45
105+20	968.58
105+30	968.71
105+40	968.84
105+50	968.97
105+60	969.10
105+70	969.23
105+80	969.36
105+90	969.49
106+00	969.62
106+10	969.75
106+20	969.88
106+30	970.01
106+40	970.14
106+50	970.27
106+60	970.40
106+70	970.53
106+80	970.66
106+90	970.79
107+00	970.92