

INDEX OF SHEETS

SHEET NO.	TITLE PAGE
1	TITLE PAGE
2	TYPICAL CROSS-SECTION OF IMPROVEMENT (GRADING, BASE & DRAINAGE WITH GUARD RAIL)
3	BANKING AND WIDENING TABLES
4-5	PLAN AND PROFILE SHEETS
6	STANDARD STRUCTURE SHEET S29; PIPE CULVERTS
7	" " " S29; BOX CULVERTS
8	" " " S30; GUARD RAIL
9	" " " S31; BOUNDARY MARKERS
10-21	CROSS-SECTION SHEETS

Standard Structure Sheet S29 + S30 approved by the Chief Engineer on July 16, 1933.

Standard Structure Sheet S30 approved by the Chief Engineer on Aug. 15, 1933.

Standard Structure Sheet S31 approved by the Chief Engineer on July 25, 1934.

FED. ROAD DIST. NO.	STATE	W.P.H. PROJ. NO.	FISCAL YEAR	SHEET NO.	TOTAL SHEETS
9	Vt.	81-1	1936	1	21

STATE OF VERMONT
STATE HIGHWAY DEPARTMENT

PLAN AND PROFILE OF PROPOSED
STATE HIGHWAY

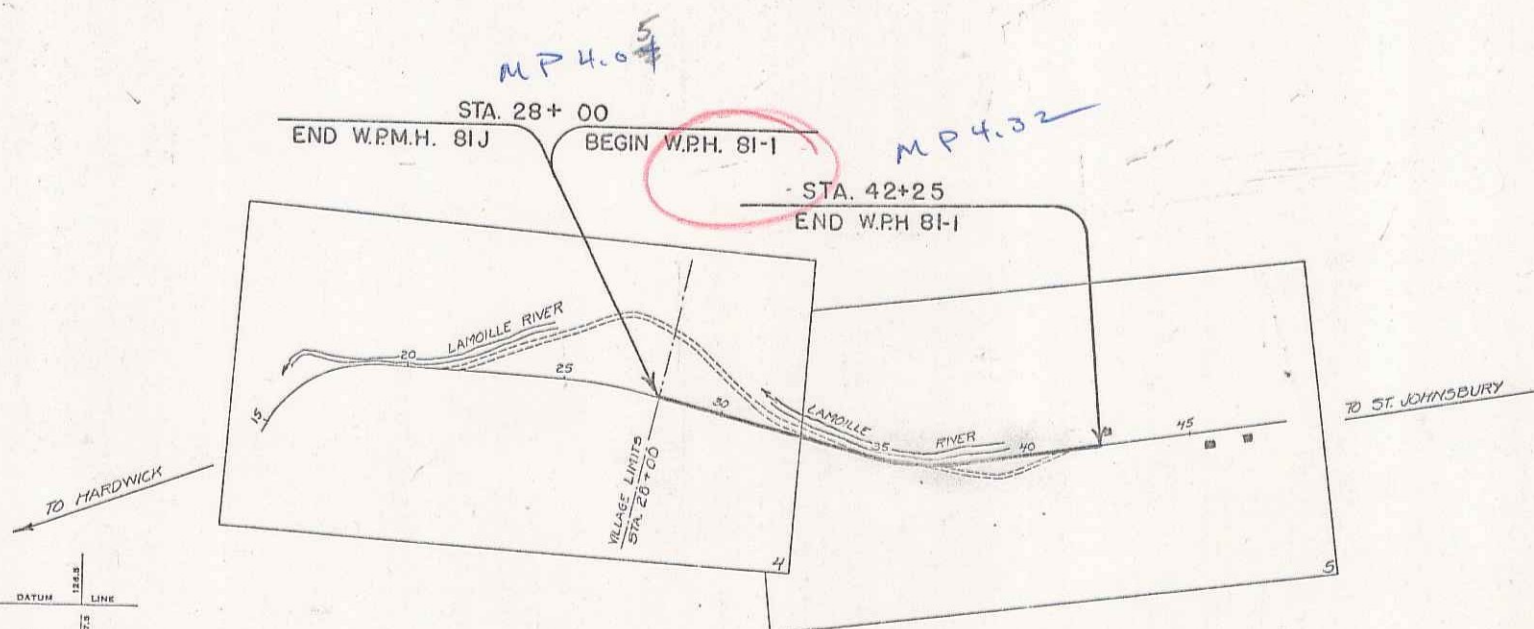
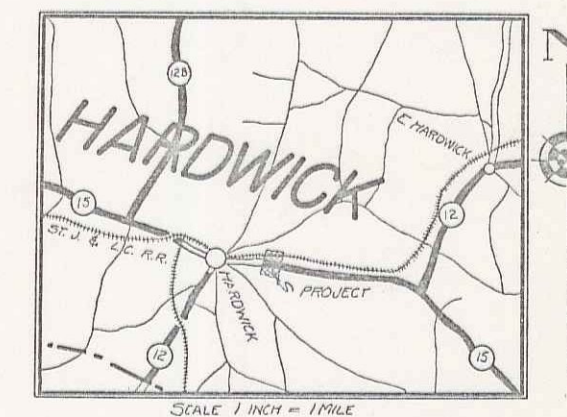
U.S. WORKS PROGRAM HIGHWAY PROJECT (W.P.H. 81-1)

TOWN OF HARDWICK *Pin #00R264*

HARDWICK-ST. JOHNSBURY ROAD

BEGINNING AT HARDWICK VILLAGE LIMITS AND EXTENDING
EASTERLY 0.269 MILES.

LENGTH OF PROJECT 1422.8 FT. = 0.269 MILES



RIGHT-OF-WAY DIVISION
DOWN FILE
PERPETUAL
plc
Town of 415
(To Be Returned To R.O.W. Division)

APPROVED: *Oct 26 1935*
H.S. Sargent
COMMISSIONER OF HIGHWAYS
SUBMITTED BY ORDER OF THE STATE HIGHWAY BOARD

MM 0404 20432

CONVENTIONAL SIGNS

COUNTY LINE
TOWN LINE
FENCE LINE
STONE WALL
UNFENCED PROPERTY
GUARD RAIL
TRAVELED WAY
RAILROAD
RETAINING WALL
CENTER LINE
SURVEY LINE
CULVERT
DROP INLET
TROLLEY POLE
POWER POLE
TELEPHONE POLE
TREES
HEDGE

GROUND ELEVATION	DATUM	LINE
GRADE ELEVATION	DATUM	LINE

CURVE DATA

DEFLECTION ANGLE	Δ
DEGREE OF CURVE	D
RADIUS OF CURVE	R
TANGENT DISTANCE	T
LENGTH OF CURVE	L
EXTERNAL DISTANCE	E
POINT OF INTERSECTION	P. I.
POINT OF CURVE	P. C.
POINT OF TANGENT	P. T.
POINT ON TANGENT	P. O. T.

SCALES

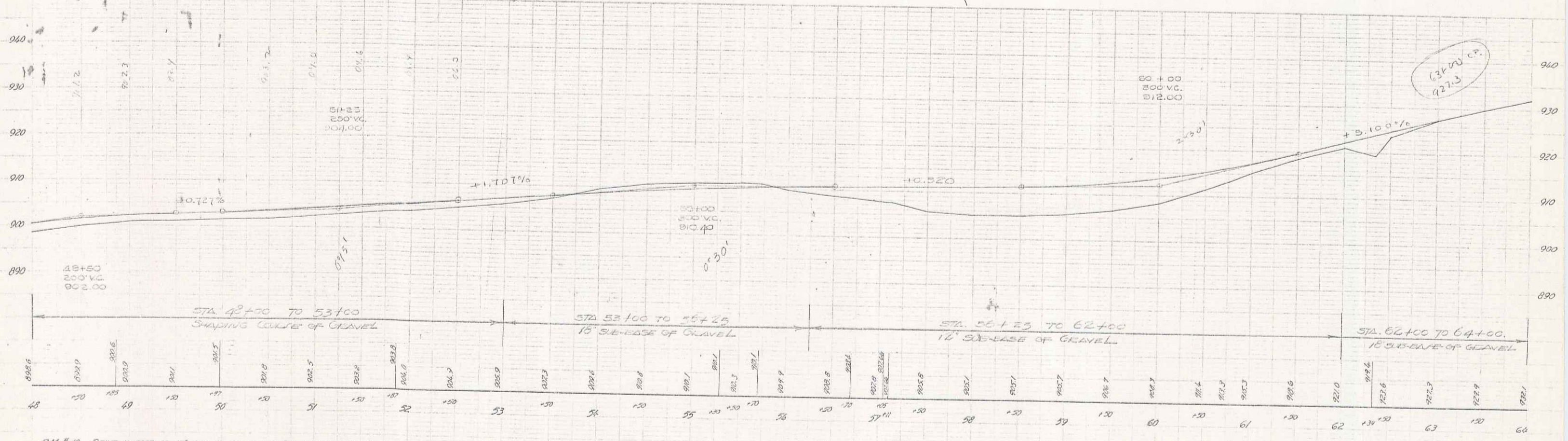
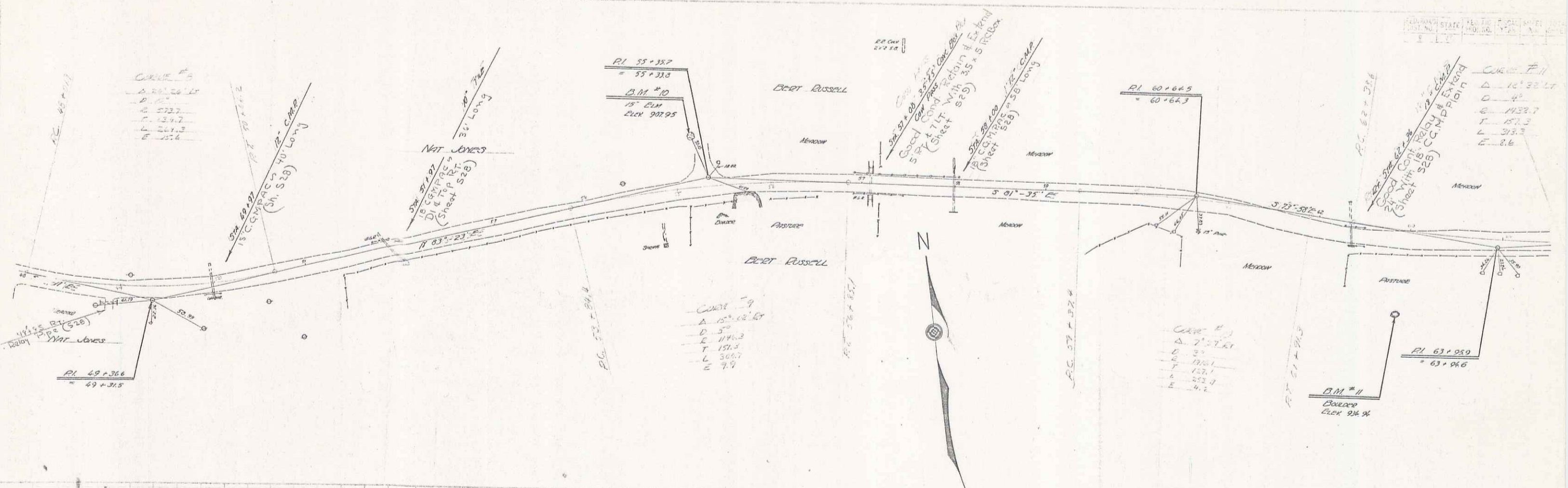
TITLE	1" = 300'
TYPICAL	1" = 2"
PLAN	1" = 50'
PROFILE	1" = 50'
VERT	1" = 10'
CROSS-SECTIONS	1" = 5'

These plans are subject to such revisions as may be required by the Bureau of Public Roads or the Commissioner of Highways.
Construction is to be carried on in accordance with the plans and Standard Road and Bridge Specifications of 1933, including all subsequent approved revisions, and such revised specifications and special provisions as are submitted with the plans.
Attention of the contractor is called to the fact that the State Highway Board reserves the right to extend this project at the same contract prices. Said cost of extension not to exceed 65% of the amount of the contract.

RECOMMENDED
DISTRICT ENGINEER BUREAU OF PUBLIC ROADS
RECOMMENDED FOR APPROVAL
CHIEF ENGINEER BUREAU OF PUBLIC ROADS
APPROVED
DIRECTOR - BUREAU OF PUBLIC ROADS

CORRECT: *Oct 26 1935*
H.S. Sargent
ROAD ENGINEER
SERIES W.P.H. NO. 81-1 FILED
SHEET 1 OF 21

DIST #1 1



D.M. #10 SPINE IN CORN OF 15" CUM 57 FT LT. OF STA. 55+00. CUM 902.95
 D.M. #11 POINT SPOT ON BOULDER 90 FT. RT. OF STA. 62+93. CUM 934.94

SERIES MAP No
 SHEET 6
 OF 21 SHEETS