

INDEX OF SHEETS

SHEET NO.	1	TITLE PAGE
"	2	TYPICAL CROSS-SECTION OF IMPROVEMENT { 2 1/2" Crushed Stone Mixed-in-Place Surface Course with Culvert, Asphalt and Prime Coat of Refined Tar Items 27, 28 & 31
"	3	BANKING AND WIDENING TABLES
"	4-5	PLAN AND PROFILE
"	6	STD. STR. SHEET S-40. BARRICADES, SIGNS, & LIGHTS.

FED. ROAD DIST. NO.	STATE	FED. AID PROJ. NO.	FISCAL YEAR	SHEET NO.	TOTAL SHEETS
9	Vt.	81129	1939	1	6

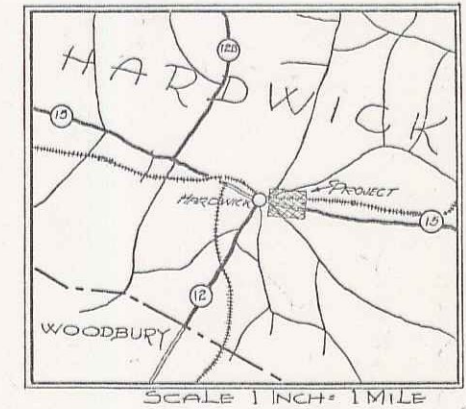
STATE OF VERMONT
 STATE HIGHWAY DEPARTMENT
 PLAN AND PROFILE OF PROPOSED
 STATE HIGHWAY
 FEDERAL AID PROJECT

TOWN OF HARDWICK *Pin# 00R262*

HARDWICK-ST. JOHNSBURY ROAD

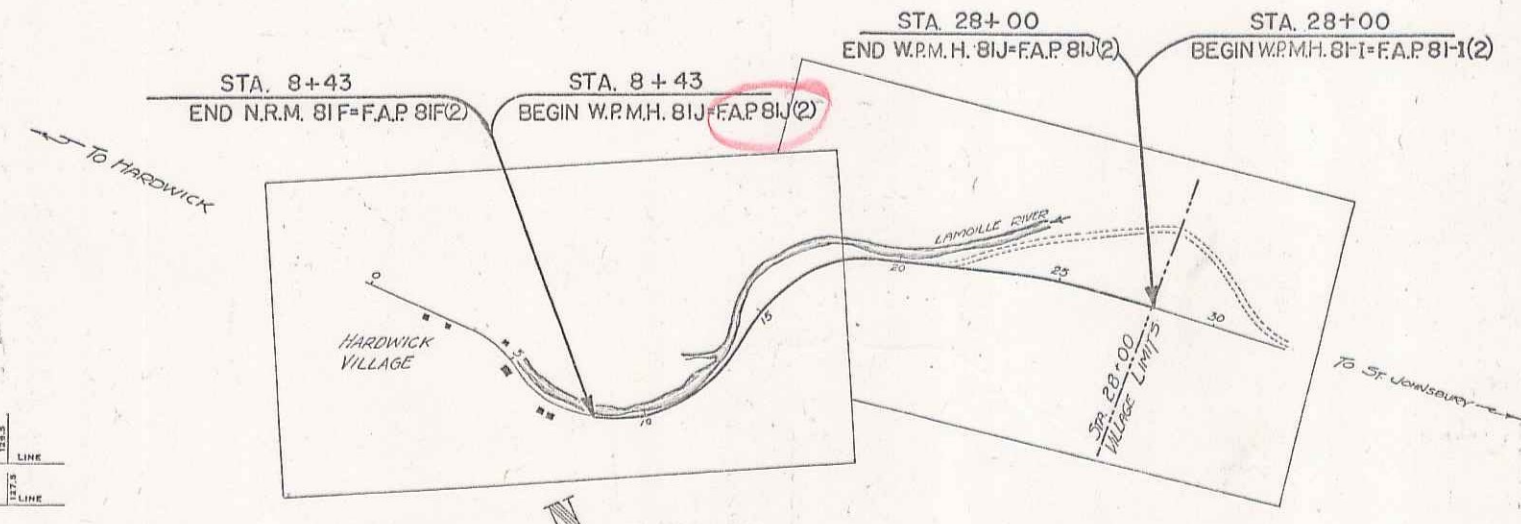
BEGINNING AT A POINT 343 FT. EAST OF THE END OF THE CONCRETE PAVEMENT IN HARDWICK VILLAGE, AND EXTENDING EASTERLY 0.371 MILES TO THE VILLAGE LIMITS.

LENGTH OF PROJECT ^{1961.6}~~1962.6~~ FT. = 0.371 MILES



RIGHT-OF-WAY DIVISION
 TOWN FILE
 PERPETUAL
 Town of _____
 (To Be Returned To R.O.W. Division)

APPROVED: *Sept 16, 1939*
H.E. Sargent
 COMMISSIONER OF HIGHWAYS
 SUBMITTED BY ORDER OF THE STATE HIGHWAY BOARD



COL	TOV	PER	STO	UNT	GUZ	TRA	RAII	RET	CEN	SUR	CUL	DRG	TRD	POW	TEL	TRD	HED

CONAL SIGNS

GROUND ELEVATION DATUM LINE

GRADE ELEVATION DATUM LINE

CURVE DATA

DEFLECTION ANGLE.....Δ

DEGREE OF CURVE.....D.

RADIUS OF CURVE.....R.

TANGENT DISTANCE.....T.

LENGTH OF CURVE.....L.

EXTERNAL DISTANCE.....E.

POINT OF INTERSECTION.....P. I.

POINT OF CURVE.....P. C.

POINT OF TANGENT.....P. T.

POINT ON TANGENT.....P. O. T.

SCALE

TITLE 1" = 300'

TYPICAL 1" = 2'

PLAN 1" = 50'

PROFILE 1" = 10'

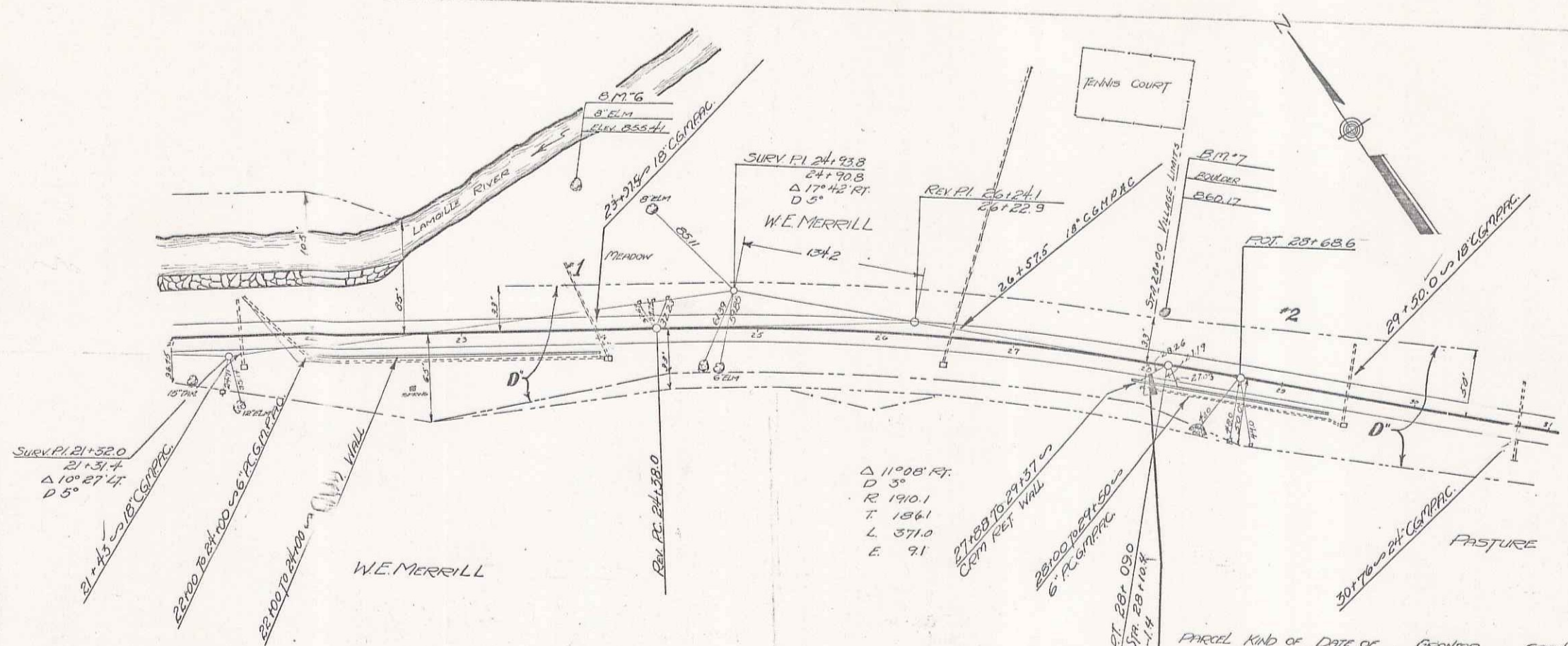
THESE PLANS ARE SUBJECT TO SUCH REVISIONS AS MAY BE REQUIRED BY THE PUBLIC ROADS ADMINISTRATION OR THE COMMISSIONER OF HIGHWAYS. CONSTRUCTION IS TO BE CARRIED ON IN ACCORDANCE WITH THE PLANS AND STANDARD ROAD AND BRIDGE SPECIFICATIONS OF 1936 AS APPROVED DECEMBER 29, 1936 BY THE PUBLIC ROADS ADMINISTRATION INCLUDING ALL SUBSEQUENT APPROVED REVISIONS AND SUCH REVISED SPECIFICATIONS AND SPECIAL PROVISIONS AS ARE SUBMITTED WITH THE PLANS.

APPROVED: *Sept 11, 1939*
 DISTRICT HIGHWAY COMMISSIONER

APPROVED: *Sept 15, 1939*
 ROAD ENGINEER

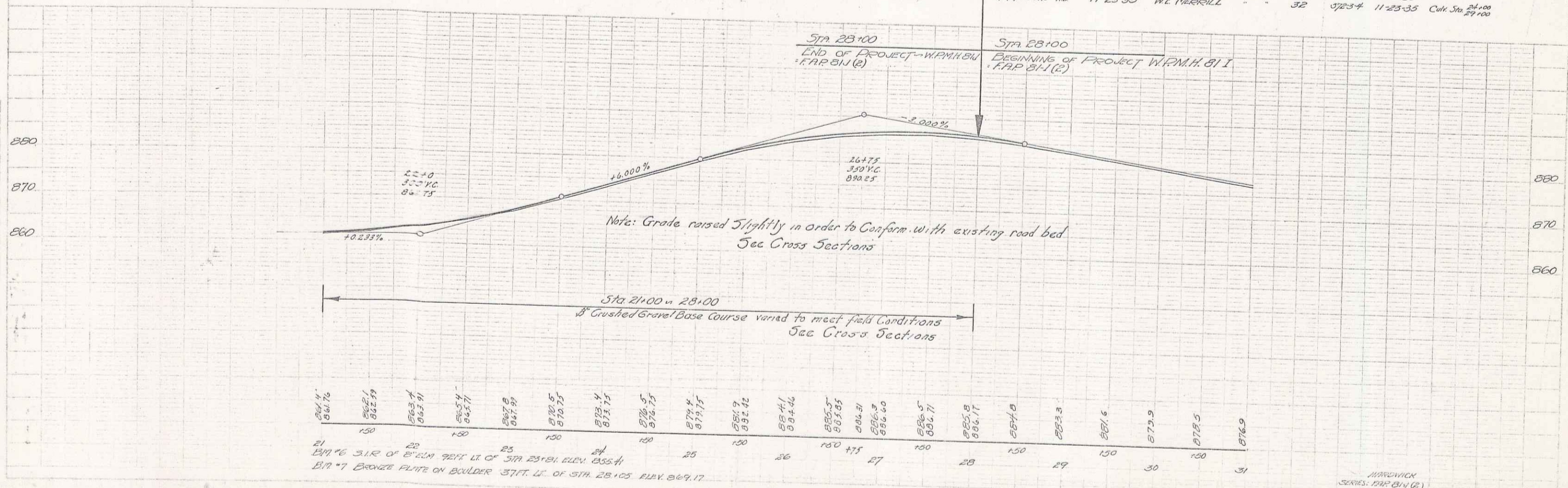
SERIES F.A.P. NO. 81129 FILED
 SHEET 1 OF 6

Dist # 7



$\Delta 11^{\circ}08' R$
 $D 5^{\circ}$
 $R 1940.1$
 $T 1861$
 $L 371.0$
 $E 91$

Parcel	Kind of Instrument	Date of Instrument	Grantor	Grantee	Recorded Mapbook	Page	Date	Remarks
A	O.C.D.	11-25-35	P.C. KITTREDGE	Sr of W.	34	440	12-6-35	
B	REC'D W.D.	11-23-35	W.E. MERRILL		32	373-4	11-23-35	Cont. Sta. 24+00



MAPBOOK
 SERIES: MAP 81 I (2)
 SHEET 5 OF 6