

INDEX OF SHEETS

SHEET NO. 1	TITLE PAGE	} ONE COURSE CEMENT CONCRETE PAVEMENT
" 2	TYPICAL CROSS-SECTION OF IMPROVEMENT	
" 3	DRAINAGE AND FINISHING TABLES	} GRADING, BASE AND CULVERT CONSTRUCTION
" 4-5	PLAN AND PROFILE SHEETS	
" 6	STANDARD STRUCTURE SHEET 5-28	PIRE CULVERTS
" 7	" " " " " " " "	5-30 GUARD END
" 8	" " " " " " " "	5-31 UNDERPASS
" 8-A	APPROPRIATES, SIGNS AND LIGHTS 5.8-11	
" 9-11	CROSS SECTIONS	

STANDARD SHEET 5-28 SUBMITTED TO THE CHIEF ENGINEER ON MAY 16, 1933.
STANDARD SHEET 5-30 SUBMITTED TO THE CHIEF ENGINEER ON FEB. 15, 1933.

FED. ROAD DIST. NO.	STATE	PROJECT	FISCAL YEAR	SHEET NO.	TOTAL SHEETS
9	VT.	87-F	1933	1	1

STATE OF VERMONT
STATE HIGHWAY DEPARTMENT

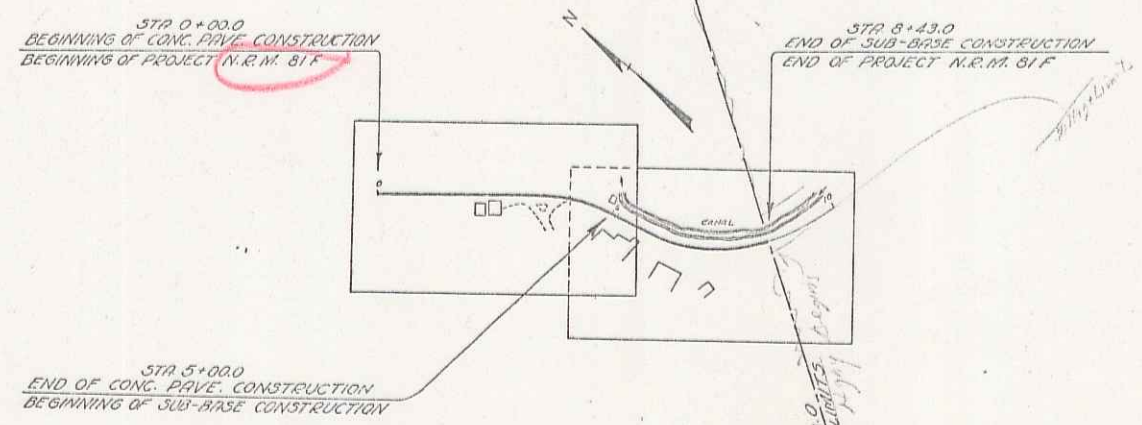
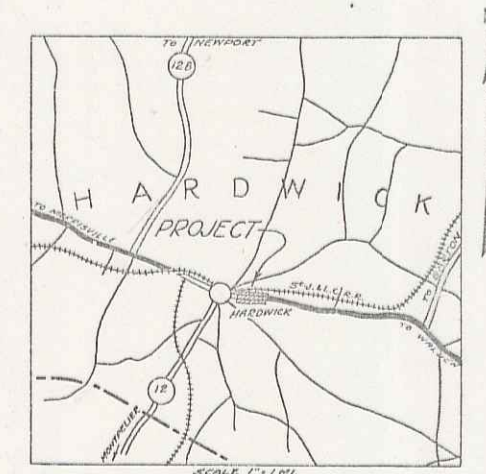
PLAN AND PROFILE OF PROPOSED
STATE HIGHWAY

NATIONAL RECOVERY MUNICIPAL PROJECT

VILLAGE OF HARDWICK *Pin # 000259*
MILL STREET

FROM A POINT 203 FT. NORTH FROM ALBERT PINARD'S BLACKSMITH SHOP, SOUTHERLY 0.168 MILES TO THE VILLAGE LIMITS

LENG. OF CONC. PAVE. CONST. = 500.0 FT. = 0.094 MILES
LENG. OF SUB-BASE CONST. = 343.0 FT. = 0.065 MILES



MP 3.65, 3.68
RIGHT-OF-WAY DIVISION
TOWN FILE
PERPETUAL
File
Town of 15
(To Be Returned To R.O.W. Division)
APPROVED: OCT 28 1933
A. E. Langens
COMMISSIONER OF HIGHWAYS

CONVENTIONAL SIGNS

COUNTY LINE	GROUND ELEVATION	DATE	LINE
TOWN LINE	GRADE ELEVATION	DATE	LINE
FENCE LINE			
STONE WALL			
UNFENCED PROPERTY			
GUARD RAIL			
TRAVELED WAY			
RAILROAD			
RETAINING WALL			
CENTER LINE			
SURVEY LINE			
CULVERT			
DROP INLET			
TROLLEY POLE			
POWER POLE			
TELEPHONE POLE			
TREES			
HEDGE			

CURVE DATA

DEFLECTION ANGLE	Δ
DEGREE OF CURVE	D
RADIUS OF CURVE	R
TANGENT DISTANCE	T
LENGTH OF CURVE	L
EXTERNAL DISTANCE	E
POINT OF INTERSECTION	P. I.
POINT OF CURVE	P. C.
POINT OF TANGENT	P. T.
POINT ON TANGENT	P. O. T.

SCALE

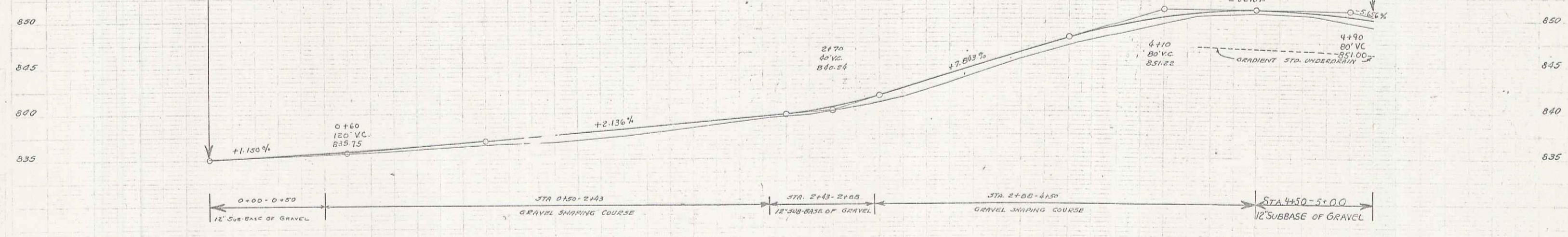
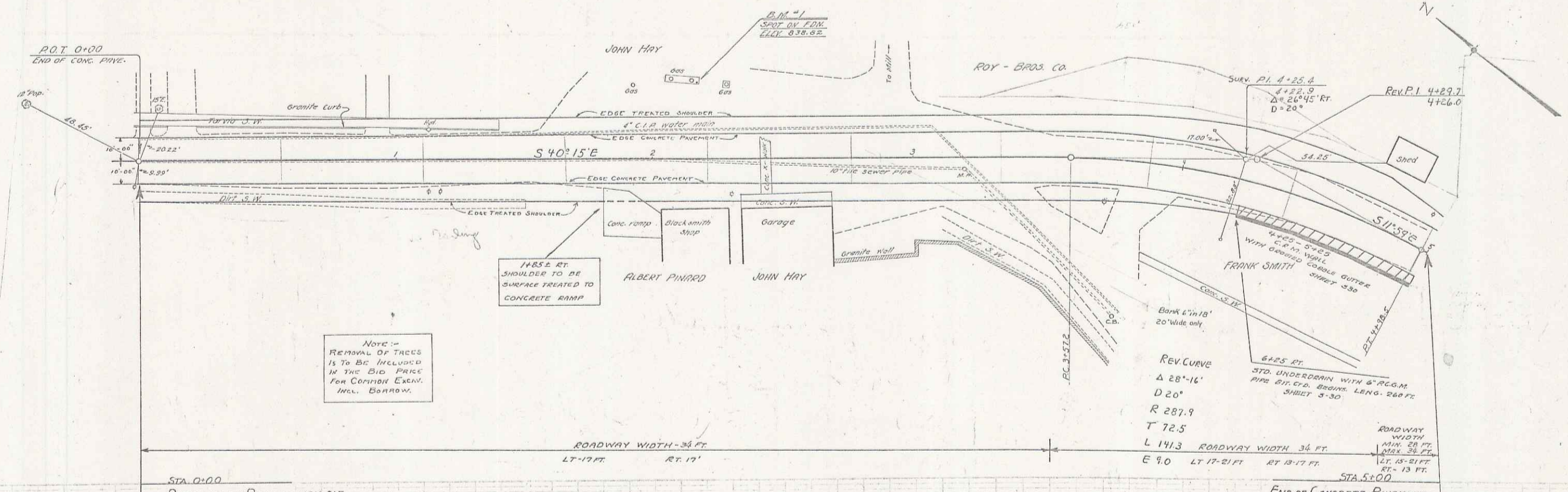
TITLE	1" = 200.0'
PLANS	1" = 50.0'
PROFILE	1" = 10.0'
CROSS SECTIONS	1" = 5.0'

THESE PLANS ARE SUBJECT TO SUCH REVISIONS AS MAY BE REQUIRED BY THE BUREAU OF PUBLIC ROADS OF THE COMMISSIONER OF HIGHWAYS. CONSTRUCTION IS TO BE CARRIED ON IN ACCORDANCE WITH THE STANDARD ROAD AND BRIDGE SPECIFICATIONS OF 1930 WITH ALL SUBSEQUENT APPROVED REVISIONS AND SUCH SPECIFICATIONS AND SPECIAL PROVISIONS AS ARE SUBMITTED WITH THE PLANS.

RECOMMENDED
DISTRICT ENGINEER
BUREAU OF PUBLIC ROADS
RECOMMENDED FOR APPROVAL
CHIEF ENGINEER
BUREAU OF PUBLIC ROADS
APPROVED
DIRECTOR - BUREAU OF PUBLIC ROADS

CONTRACT 87-F-1 SERIES N.R.M.N.O. 817 FILED
ROAD ENGINEER SHEET 1 OF 11

Dist. # 7 1



Station	Elevation	Notes
0+00	835.75	120' VC
0+25	835.75	
0+50	835.75	
0+75	835.75	
1+00	835.75	
1+25	835.75	
1+50	835.75	
1+75	835.75	
2+00	835.75	
2+25	835.75	
2+50	835.75	
2+75	835.75	
3+00	835.75	
3+25	835.75	
3+50	835.75	
3+75	835.75	
4+00	835.75	
4+25	835.75	
4+50	835.75	
4+75	835.75	
5+00	835.75	

B.M. #1 SPOT ON CONC. FOR GAS PUMP 20 FT. LT. STA. 2+10 ELEV. 838.82

