

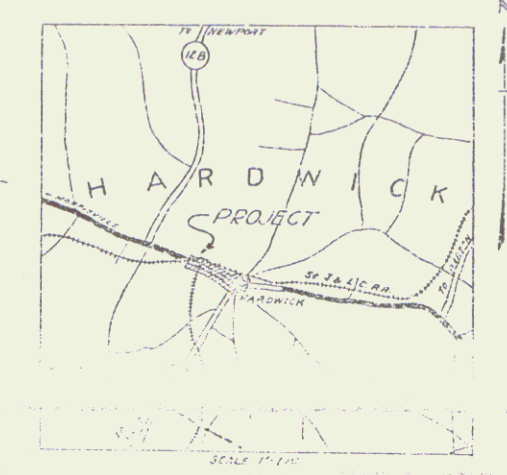
**INDEX OF SHEETS**

NO. 1	TITLE PAGE
2	TYPICAL CROSS-SECTION OF IMPROVEMENT
3	BANKING AND EROSION TABLES
4-13	PLAN AND PROFILE SHEETS
14	SPECIAL DETAILS
15	S-1
16	S-2
17	S-3
18	S-4
19	S-5
20	S-6
21	S-7
22	S-8
23	S-9
24	S-10
25	S-11
26	S-12
27	S-13
28	S-14
29	S-15
30	S-16
31	S-17
32	S-18
33	S-19
34	S-20
35	S-21
36	S-22
37	S-23
38	S-24
39	S-25
40	S-26
41	S-27
42	S-28
43	S-29
44	S-30
45	S-31
46	S-32
47	S-33
48	S-34
49	S-35
50	S-36
51	S-37
52	S-38
53	S-39
54	S-40
55	S-41
56	S-42
57	S-43
58	S-44
59	S-45
60	S-46
61	S-47
62	S-48
63	S-49
64	S-50
65	S-51
66	S-52
67	S-53
68	S-54
69	S-55
70	S-56
71	S-57
72	S-58
73	S-59
74	S-60
75	S-61
76	S-62
77	S-63
78	S-64
79	S-65
80	S-66
81	S-67
82	S-68
83	S-69
84	S-70
85	S-71
86	S-72
87	S-73
88	S-74
89	S-75
90	S-76
91	S-77
92	S-78
93	S-79
94	S-80
95	S-81
96	S-82
97	S-83
98	S-84
99	S-85
100	S-86
101	S-87
102	S-88
103	S-89
104	S-90
105	S-91
106	S-92
107	S-93
108	S-94
109	S-95
110	S-96
111	S-97
112	S-98
113	S-99
114	S-100

STATE OF VERMONT  
STATE HIGHWAY DEPARTMENT

PLAN AND PROFILE OF PROPOSED  
STATE HIGHWAY

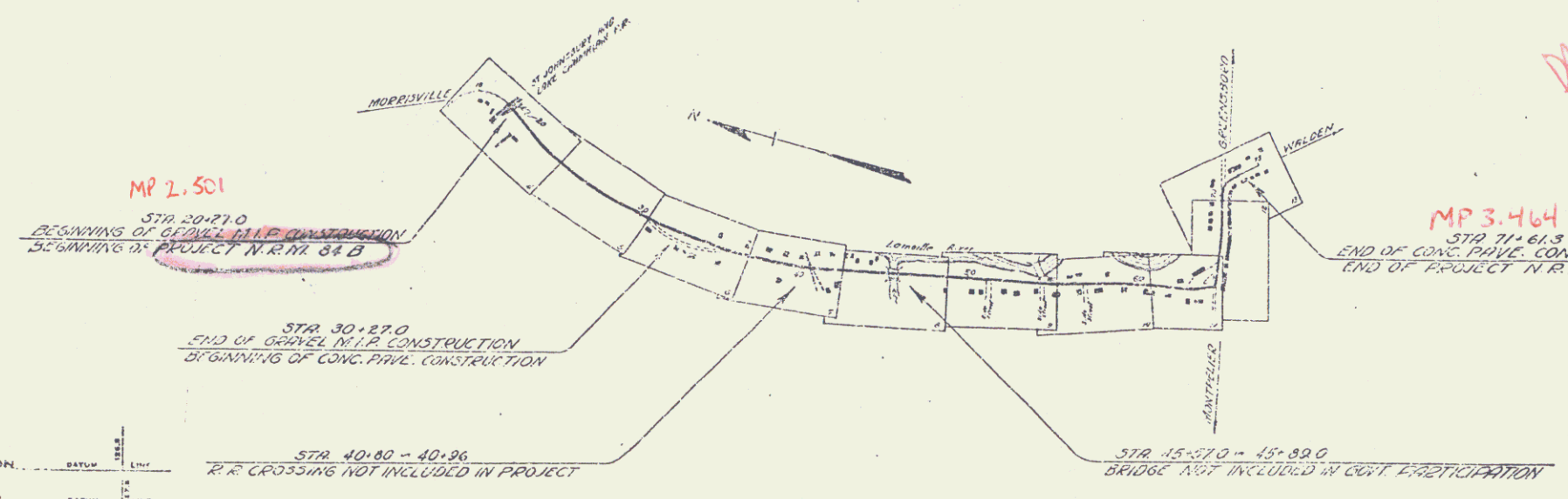
NATIONAL RECOVERY MUNICIPAL PROJECT  
VILLAGE OF HARDWICK *Pin # 00R 258*  
VILLOTT, GARDNER AND MILL STREETS



FROM THE STURGEONSBURY & LAKE CHARLEMAN RAILROAD CROSSING SOUTHERLY 0.863 MILES TO A POINT IN FRONT OF THE HARDWICK SAVINGS BANK AND GRANITE TRUST CO.

LENGTH OF CONC. PAVE. CONSTRUCTION = 4088.3 FT. = 0.774 MILES  
LENGTH OF GRAVEL M.P. CONSTRUCTION = 1000.0 FT. = 0.189 MILES

VT 15



*DE 2/11/00*

RIGHT-OF-WAY DIVISION  
TOWN FILE  
PERPETUAL  
Town of VT 15  
(To Be Returned To R.O.W. Division)  
APPROVED *[Signature]*  
COMMISSIONER OF HIGHWAYS  
SUBMITTED BY ORDER OF THE STATE HIGHWAY

**CONVENTIONAL SIGNS**

COUNTY LINE	GROUND ELEVATION
TOWN LINE	GRADE ELEVATION
STONE WALL	
UNFENCED PROPERTY	
GUARD RAIL	
TRAVELED WAY	
RAILROAD	
RETAINING WALL	
CENTRE LINE	
SURVEY LINE	
CULVERT	
STUMP	
WATER POLE	
POWER POLE	
ELECTRIC POLE	
STREET	
REGULATIONS	

**CURVE DATA**

DEFLECTION ANGLE	Δ
DEGREE OF CURVE	D
RADIUS OF CURVE	R
TANGENT DISTANCE	T
LENGTH OF CURVE	L
EXTERNAL DISTANCE	E
POINT OF INTERSECTION	P. I.
POINT OF CURVE	P. C.
POINT OF TANGENT	P. T.
POINT ON TANGENT	P. O. T.

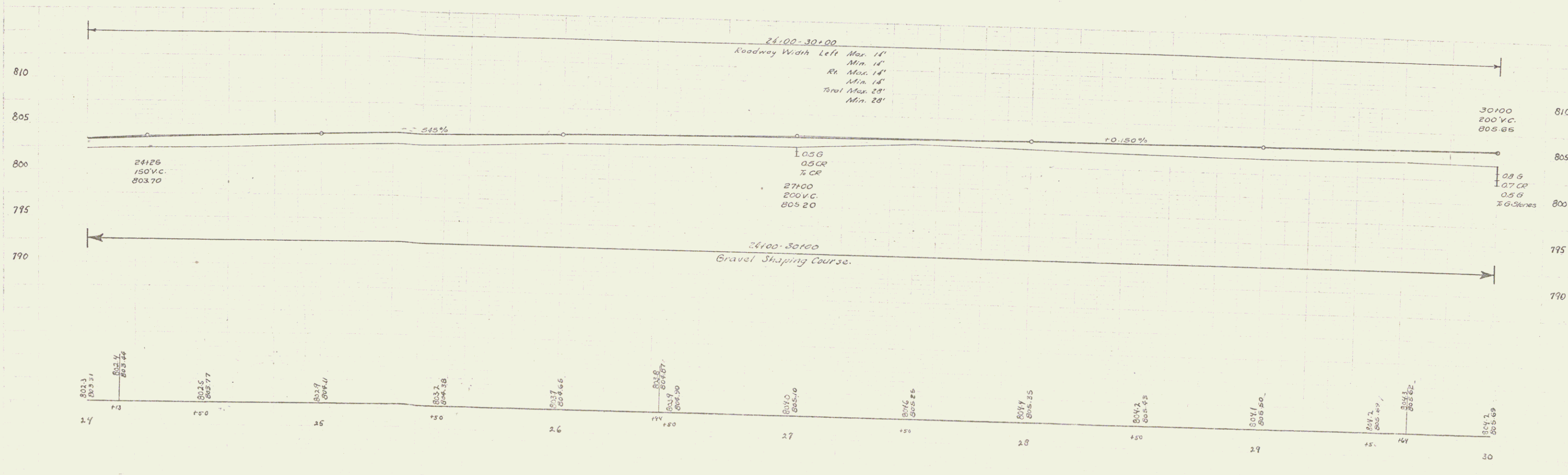
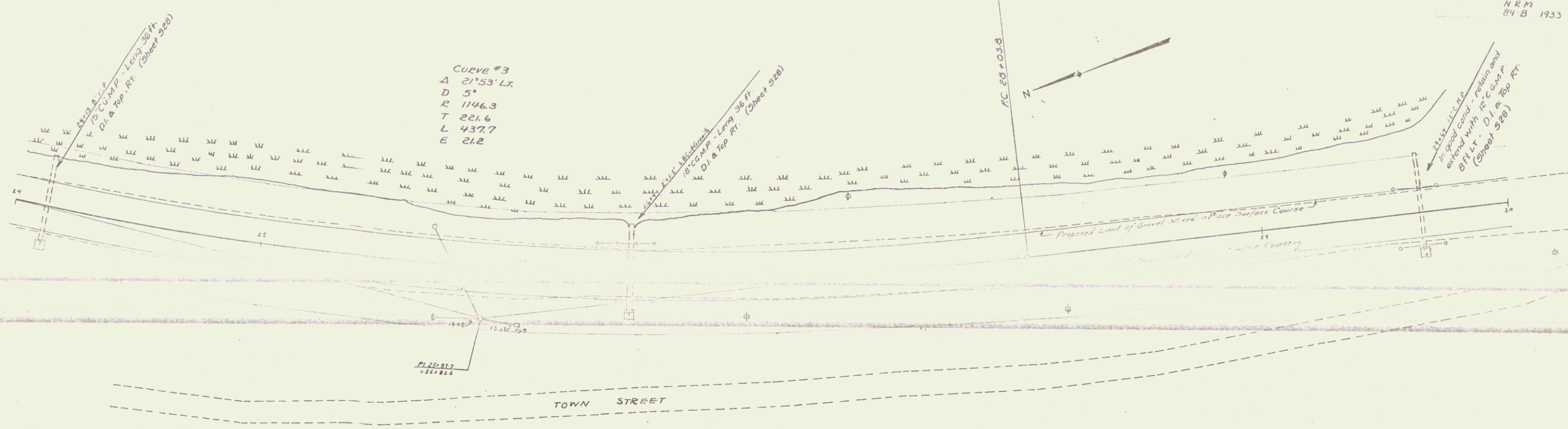
**SCALES**

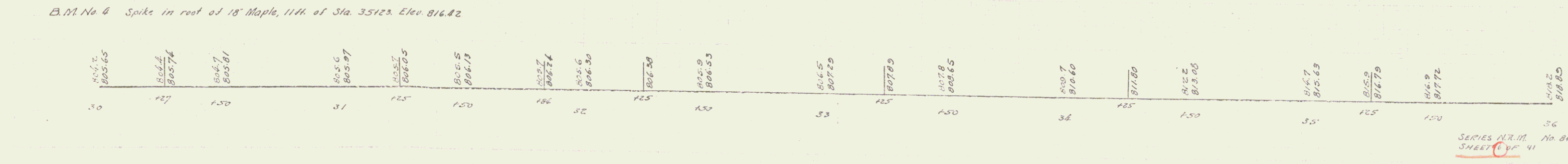
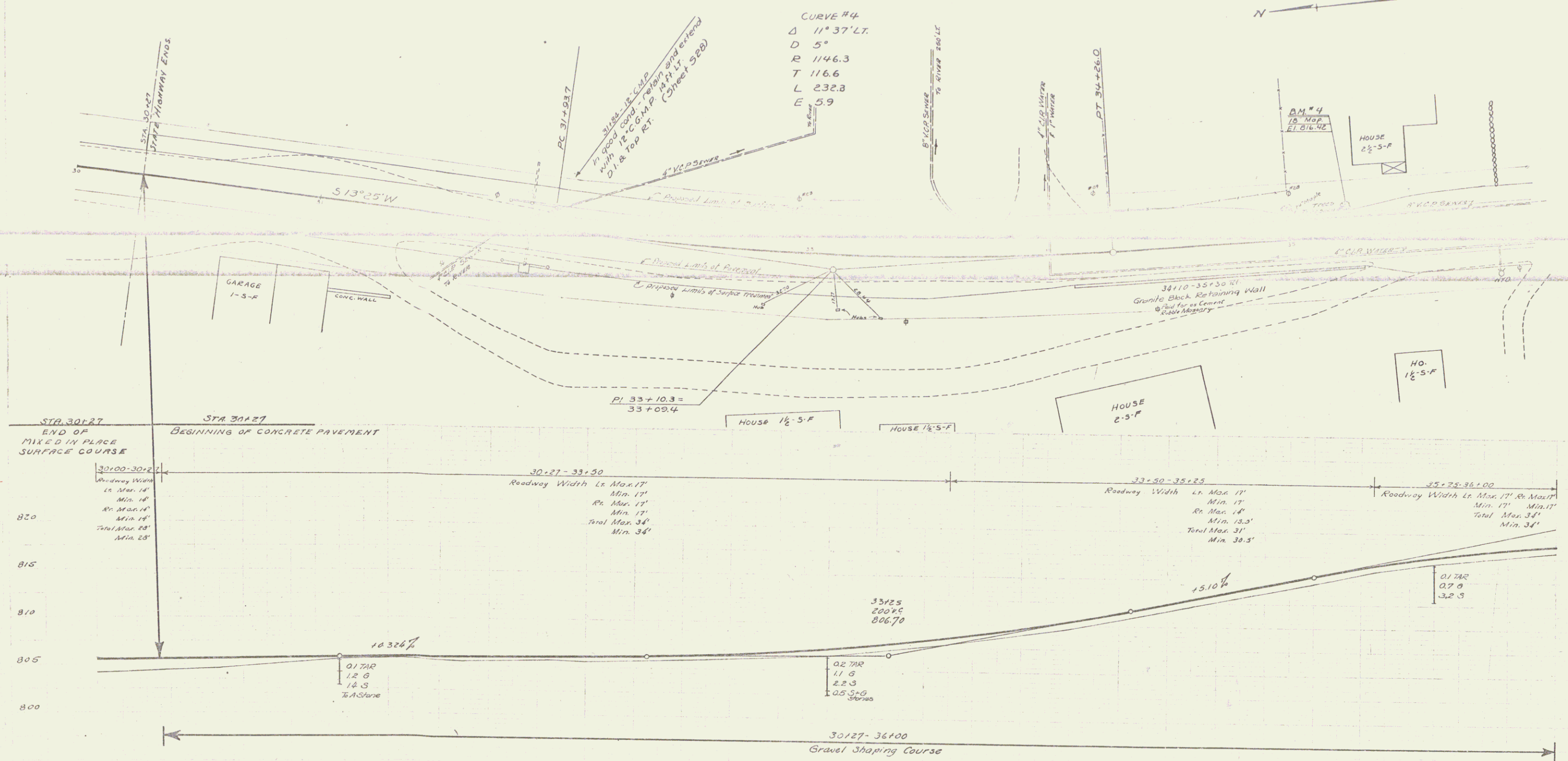
TITLE	1" = 200'
PLAN	1" = 200'
PROFILES	1" = 20'
VERT. SECTIONS	1" = 20'

THESE PLANS ARE SUBJECT TO SUCH REVISIONS AS MAY BE REQUIRED BY THE BUREAU OF PUBLIC ROADS OR THE COMMISSIONER OF HIGHWAYS. CONSTRUCTION IS TO BE CARRIED ON IN ACCORDANCE WITH THE STANDARD ROAD AND BRIDGE SPECIFICATIONS OF 1930 WITH ALL SUBSEQUENT APPROVED REVISIONS AND SUCH SPECIFICATIONS AND SPECIAL PROVISIONS AS ARE SUBMITTED WITH THE PLANS.

ROUTE VT 15  
SERIES N.R.M. NO. 008 FILED  
SHEET 1 OF 41







B.M. No 6 Spike in roof of 18' Maple, 114th. of Sta. 35123. Elev. 816.42

805.15	805.65	806.15	806.65	807.15	807.65	808.15	808.65	809.15	809.65	810.15	810.65	811.15	811.65	812.15	812.65	813.15	813.65	814.15	814.65	815.15	815.65	816.15	816.65
30	31	32	33	34	35	36	37	38	39	40	41	42	43	44	45	46	47	48	49	50	51	52	53





# LAMOILLE RIVER

Revised P.I. 47+99.9  
= 47+99.8

Revised P.I. 50+99.8  
50+99.7

Revised Curve  
Δ 0°-34' LT  
D 0'-15"  
R 2298.3  
T 113.4  
L 226.7  
C 0.2

Revised Curve  
Δ 0°-34' LT  
D 0'-15"  
R 2298.3  
T 113.4  
L 226.7  
C 0.2

L 153.3  
C 0.4

Revised P.I. 53+99.7  
= 53+99.6

REVISION BY J.P. C.B.  
Change elev. of C.B.  
48+150  
15' CAMP Lema 44 FT  
D1 & Circle Rt. (Sheet 5-28)

House  
2 1/2-5-F

HOUSE  
2-3-F

HOUSE  
2 1/2-5-F

HOUSE  
1 1/2-5-F

House  
2 1/2-5-F

STOGE  
1-5-F

12'-00" - 13'-23"  
Roadway Width  
Ls. Max. 17'  
Min. 17'  
Rs. Max. 17'  
Min. 13'  
Total Max. 34'  
Min. 30'

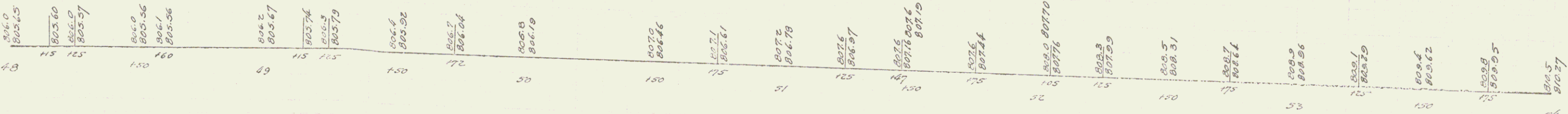
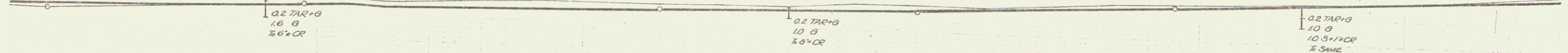
13'-23" - 51'-00"  
Roadway Width Ls. Max. 17'  
Min. 17'  
Rs. Max. 17'  
Min. 17'  
Total Max. 34'  
Min. 30'

B10  
48115  
200 V.C.  
803.20

51150  
200 V.C.  
807.00

805

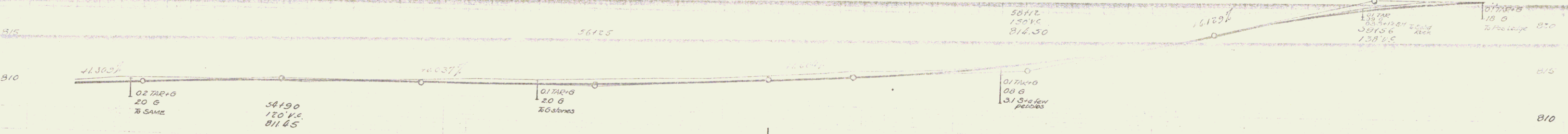
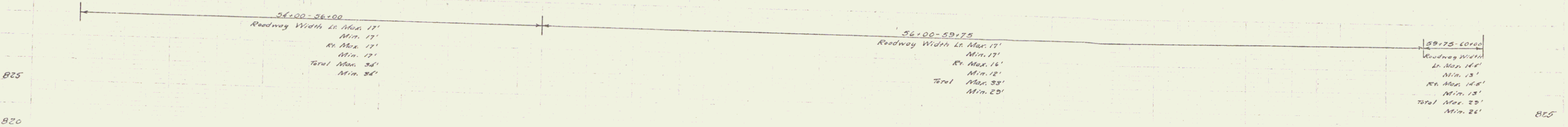
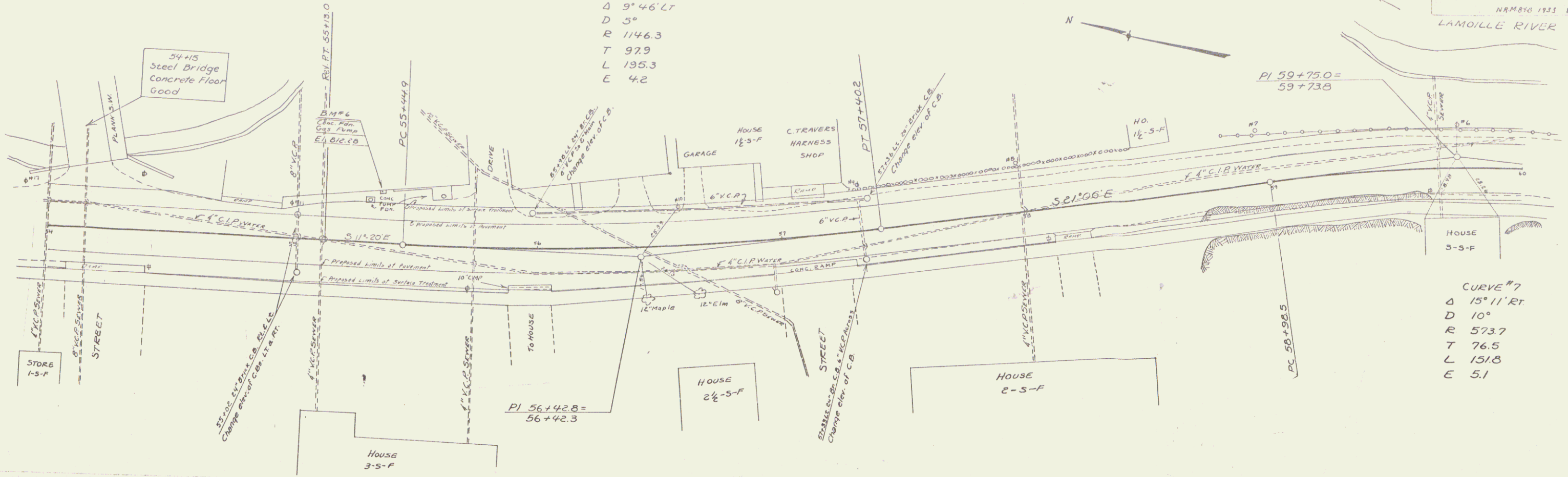
810



SERIES N.T.M. No 84-B  
SHEET 1 OF 41

CURVE #6  
 $\Delta$  3° 46' LT  
 D 3°  
 R 1146.3  
 T 97.9  
 L 135.3  
 E 4.2

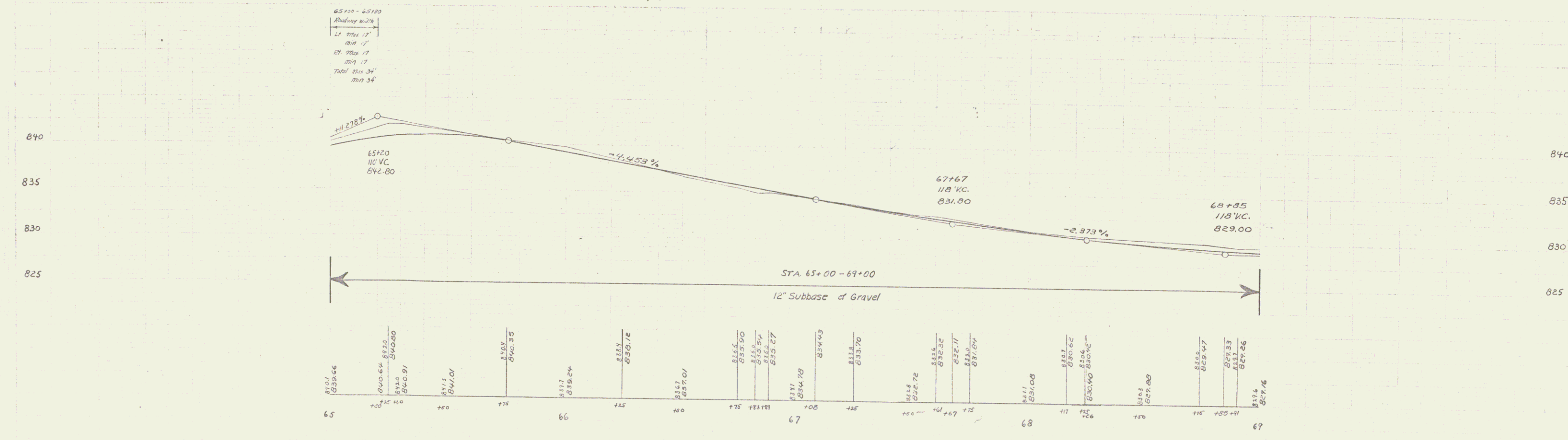
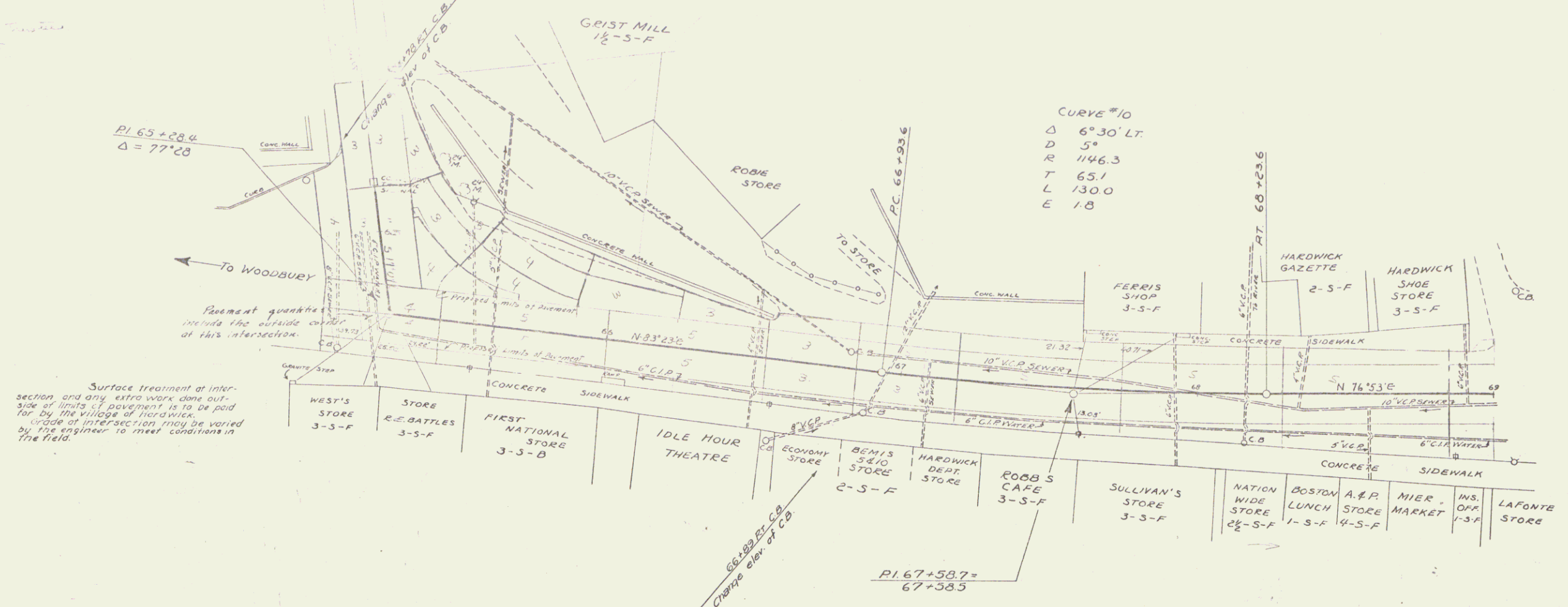
CURVE #7  
 $\Delta$  15° 11' RT  
 D 10°  
 R 573.7  
 T 76.5  
 L 151.8  
 E 5.1

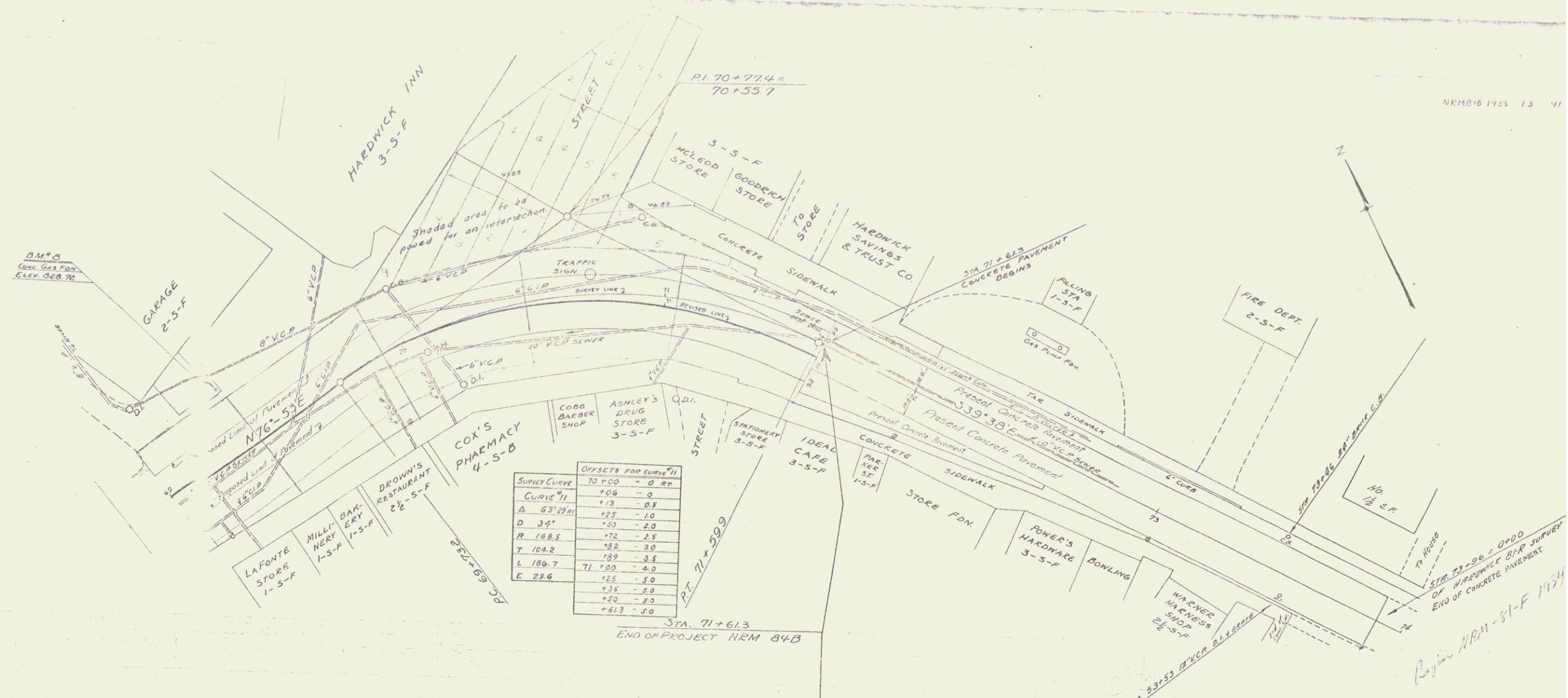


B.M. No. 6. Spot on concrete foundation of air pump, 21 ft. left of Sta 55+35. Elev 812.28

54+00	810.27	54+10	810.53	54+20	810.67	54+30	811.2	54+40	810.51	54+50	811.2	54+60	811.2	54+70	811.2	54+80	811.2	54+90	811.2	55+00	811.2	55+10	811.2	55+20	811.2	55+30	811.2	55+40	811.2	55+50	811.2	55+60	811.2	55+70	811.2	55+80	811.2	55+90	811.2	56+00	811.2	56+10	811.2	56+20	811.2	56+30	811.2	56+40	811.2	56+50	811.2	56+60	811.2	56+70	811.2	56+80	811.2	56+90	811.2	57+00	811.2	57+10	811.2	57+20	811.2	57+30	811.2	57+40	811.2	57+50	811.2	57+60	811.2	57+70	811.2	57+80	811.2	57+90	811.2	58+00	811.2	58+10	811.2	58+20	811.2	58+30	811.2	58+40	811.2	58+50	811.2	58+60	811.2	58+70	811.2	58+80	811.2	58+90	811.2	59+00	811.2	59+10	811.2	59+20	811.2	59+30	811.2	59+40	811.2	59+50	811.2	59+60	811.2	59+70	811.2	59+80	811.2	59+90	811.2	60+00	811.2
-------	--------	-------	--------	-------	--------	-------	-------	-------	--------	-------	-------	-------	-------	-------	-------	-------	-------	-------	-------	-------	-------	-------	-------	-------	-------	-------	-------	-------	-------	-------	-------	-------	-------	-------	-------	-------	-------	-------	-------	-------	-------	-------	-------	-------	-------	-------	-------	-------	-------	-------	-------	-------	-------	-------	-------	-------	-------	-------	-------	-------	-------	-------	-------	-------	-------	-------	-------	-------	-------	-------	-------	-------	-------	-------	-------	-------	-------	-------	-------	-------	-------	-------	-------	-------	-------	-------	-------	-------	-------	-------	-------	-------	-------	-------	-------	-------	-------	-------	-------	-------	-------	-------	-------	-------	-------	-------	-------	-------	-------	-------	-------	-------	-------	-------	-------	-------	-------	-------	-------	-------	-------







OFFSETS FOR CURVE #1	
SURVEY CURVE	TO P.O.D. - 0 ST.
CURVE #1	+06 - 0
A 53.22	+13 - 0.5
D 34°	+50 - 2.0
R 188.8	+72 - 3.5
T 104.2	+82 - 3.0
L 180.7	+89 - 3.8
E 23.6	+100 - 4.0
	+125 - 5.0
	+135 - 5.0
	+150 - 5.0
	+163 - 5.0

