

**INDEX OF SHEETS**

SHEET NO. 1	TITLE PAGE
2	TYPICAL CROSS-SECTIONS OF IMPROVEMENT DOUBLE TACK COAT OF REFINED TAR WITH PEASTONE SEAL CLASS A MODIFIED
3	BANKING & WIDENING TABLES
4	QUANTITY SHEET (ITEMS)
5	QUANTITY SHEET (DRAINAGE)
6-10	EARTHWORK SHEETS
11-24	PLAN & PROFILE SHEETS
25	CORR. GALV. METAL PLATE PIPE ARCH STA. 58+25
26	CORR. GALV. METAL PLATE PIPE ARCH STA. 85+00 LT.
27	CORR. GALV. METAL PLATE PIPE ARCH STA. 94+43
28	CORR. GALV. METAL PLATE PIPE STA. 126+05
29	STEEL SCHEDULE FOR STRUCTURE STA. 94+43
30	CONSTRUCTION DETAILS CD (MARKERS)
31	CONSTRUCTION DETAILS CD-2 (TYPICAL SLOPE GRADING)
32	STANDARD STRUCTURES SHEET S-40 (BARRICADES, SIGNS & LIGHTS)
33	STANDARD STRUCTURES SHEET S-48-46 (THREE CABLE GUARD RAIL WITH STEEL POSTS)
34	STANDARD STRUCTURES SHEET S-53-46 (PRE-CAST REINFORCED CONCRETE PIPE DROP INLET)
35-102	CROSS SECTION SHEETS
103-105	SIDE LINE SECTION SHEETS STA. 12+75 LT.
106-108	STANDARD STRUCTURE SHEETS APPROVED BY THE CHIEF ENGINEER, VERMONT STATE DEPARTMENT OF HIGHWAYS
S-40 JUNE 10, 1950	

STATE OF VERMONT  
DEPARTMENT OF HIGHWAYS

PROPOSED IMPROVEMENT  
FEDERAL AID  
SECONDARY PROJECT

TOWN OF READING  
COUNTY OF WINDSOR  
VERMONT ROUTE 106

BEGINNING AT A POINT 19,996.9 FEET SOUTHERLY OF THE READING-WOODSTOCK TOWN LINE AND EXTENDING NORTHERLY 19,996.9 FEET.  
LENGTH OF PROJECT 19,996.9 FEET = 3.787 MILES.

PROJECT NAME & NUMBER		PAVEMENT	AREA
READING S 23 (3)		DOUBLE TACK COAT OF REFINED TAR WITH PEASTONE SEAL	44,438 s.y.
RECORD PLANS MATERIALS			
GRAVEL	BROWN PIT WEATHERSFIELD VT.	WIRE CABLE W/ STEEL POST AMERICAN	
	ROBINSON PIT CAVERDISM VT.	STEEL & WIRE CO. NEW HAVEN CONN.	
REFINED TAR	KOPPERT PRODUCTS CO. EVERETT MASS.	R.C.P. VERMONT CONCRETE PIPE CORP. WINDSOR VT.	
PEASTONE & SAND SEAL	PENNINGTON STATE PIT (STOCKPILE)	P.A.C.C.G.M. UNDERDRAIN	NEW ENGLAND METAL CURVENT CO. BOSTON MASS.
CEMENT	CLASS 2-A PORTLAND	PLATE PIPE ARCH	
	BELKNAP LUMBER CO. CAVERDISM VT.		
	CLASS B. MILLER'S NEM-MEX	CONTRACT DATED	OCT. 3 '55
	CONCRETE INC. W. LEBANON NH.	SIGNED	OCT. 3 '55
CONTRACTOR	GEORGE S. VREDEBURGH	COMPLETED	JULY 26 '57
RES. ENG.	THOMAS PIRELLO	ACCEPTED	JULY 26 '57
RECORD PLANS	PIRELLO, PRESTON, DEMELL		

MP 3.491  
STA. 81000  
END PROJECT 82313

MP 7.277  
STA. 80200  
END PROJECT 82313



COUNTY TOWN L. FENCE L. STONE UNFENCED GUARD TRAVEL RAILING RETAIN CENTER SURVEY SLOVER DROP & TROUBLE POWER TELEP. TREES HEDGE

LENGTH 3.787 MI.  
This Double Tack Coat of Refined Tar with Peastone Seal was constructed by George S. Vredenburg, Montpelier, Vermont, beginning at a point 19,996.9 feet southerly of the Reading-Woodstock town line and extending northerly 19,996.9 ft.

READING S 23 (3)  
CONTR. GEORGE S. VREDEBURGH  
RECORD PLANS PIRELLO - PRESTON - DEMELL  
CONST. COMPLETED JULY 26, 1957

GROUND ELEVATION	DATA	LEFT LINE
GRADE ELEVATION	DATA	RIGHT LINE

CURVE DATA

DEFLECTION OF ANGLE	Δ
OFFICE OF CURVE	D
RADIUS OF CURVE	R
TANGENT DISTANCE	T
LENGTH OF CURVE	L
EXTERNAL DISTANCE	E
POINT OF INTERSECTION	PI
POINT OF CURVE	P.C.
POINT OF TANGENT	P.T.
POINT ON TANGENT	POT
POINT ON SUB-TANGENT	POST

SCALES

TITLE	1" = 600'
TYPICAL	1" = 2'
PLAN	1" = 50'
PROFILE HORIZONTAL	1" = 50'
PROFILE VERTICAL	1" = 10'
GROSS-SECTIONS	1" = 5'

THESE PLANS ARE SUBJECT TO SUCH REVISIONS AS MAY BE REQUIRED BY THE BUREAU OF PUBLIC ROADS OR THE COMMISSIONER OF HIGHWAYS.

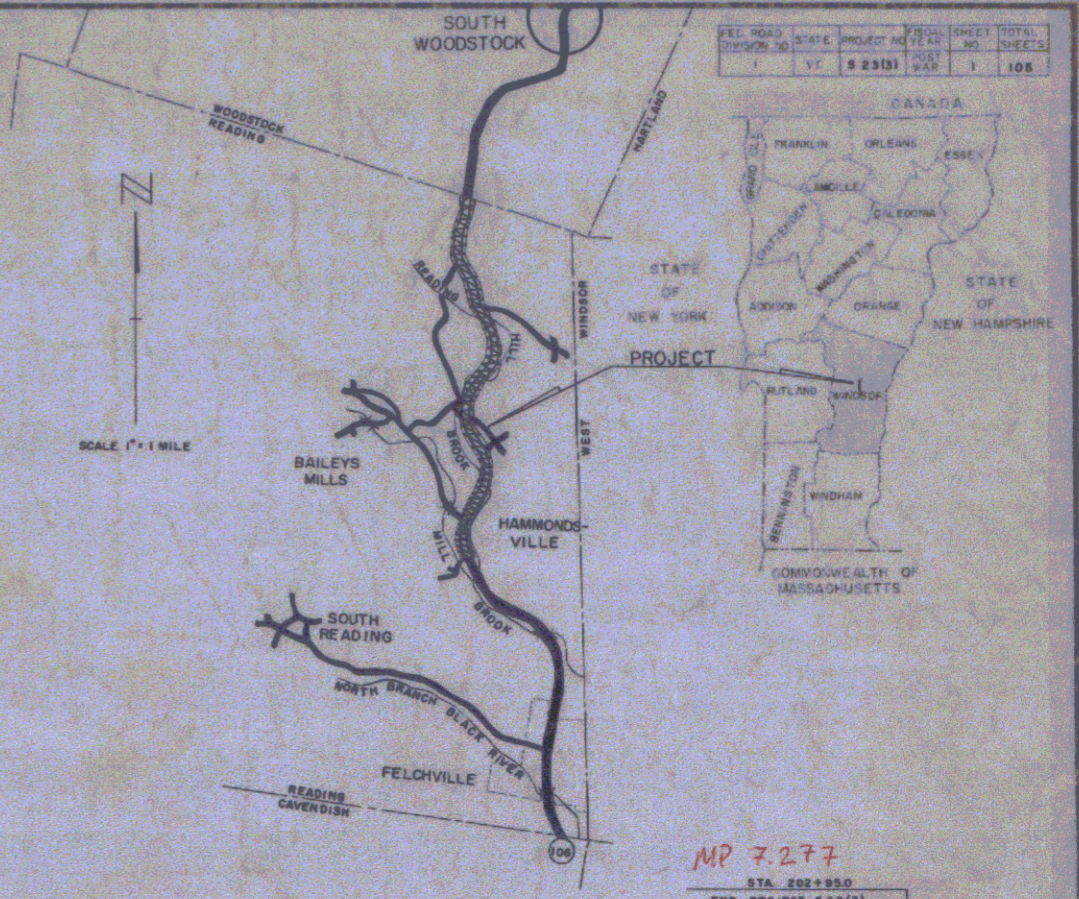
CONSTRUCTION IS TO BE CARRIED ON IN ACCORDANCE WITH THE PLANS AND THE STANDARD ROAD AND BRIDGE SPECIFICATIONS OF 1946, AS APPROVED JULY 25, 1949 BY THE BUREAU OF PUBLIC ROADS, INCLUDING ALL SUBSEQUENT APPROVED REVISIONS AND SUCH REVISED SPECIFICATIONS AND SPECIAL PROVISIONS AS ARE SUBMITTED WITH THE PLANS.

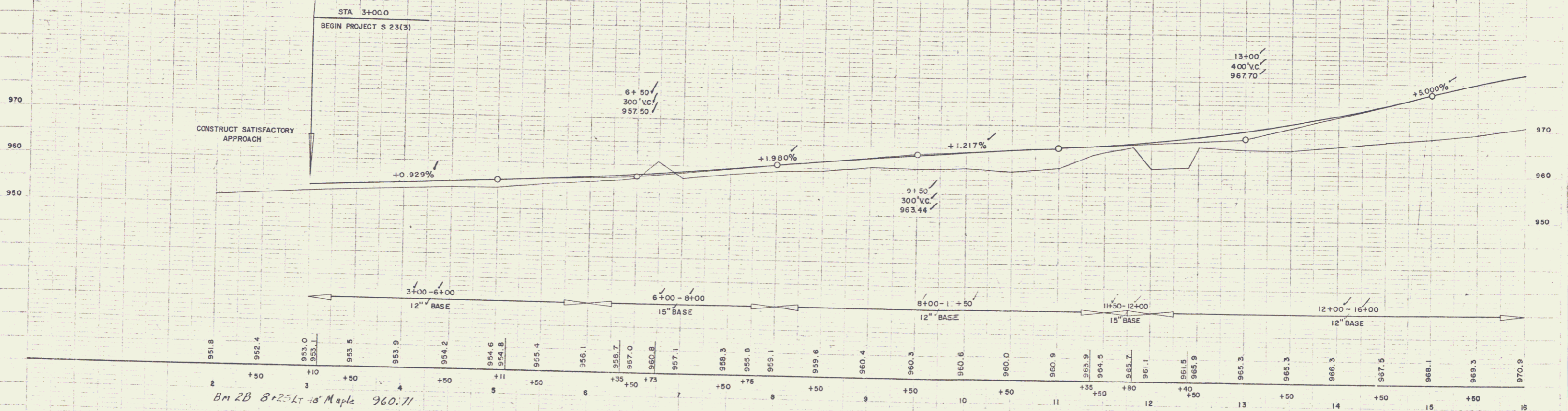
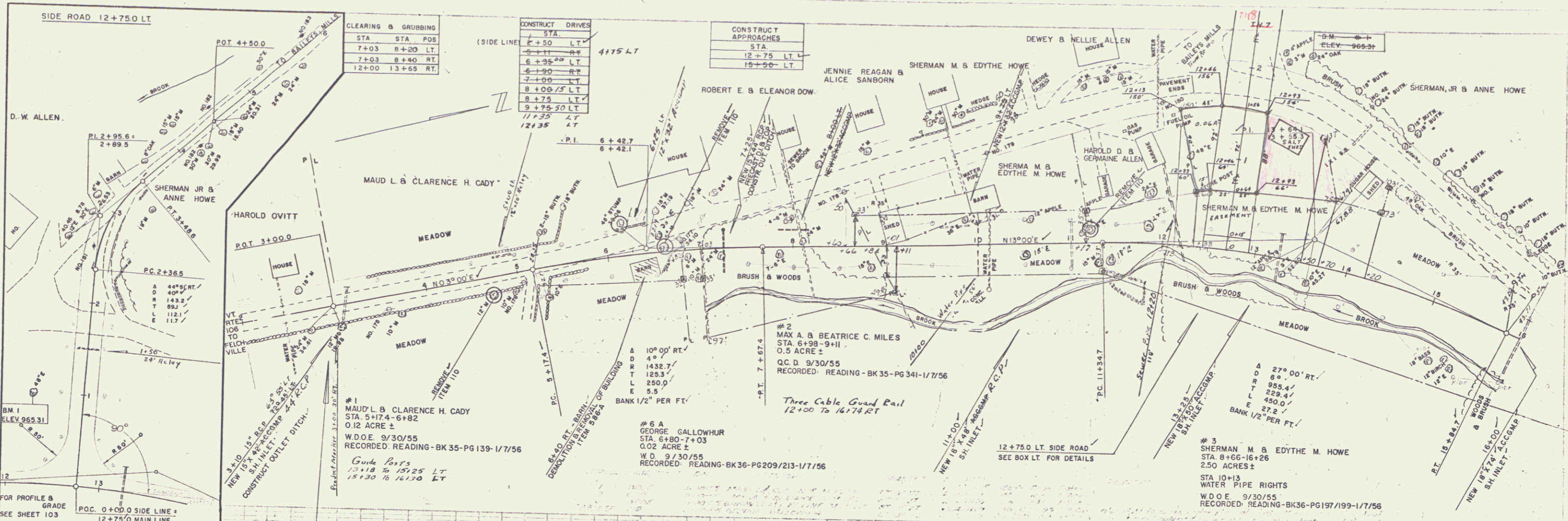
APPROVED CONSTRUCTION ENGINEER	APPROVED SECONDARY ENGINEER	APPROVED DISTRICT ENGINEER	APPROVED PROJECT ENGINEER	APPROVED PROJECT ENGINEER
DATE	DATE	DATE	DATE	DATE

DEPARTMENT OF COMMERCE  
BUREAU OF PUBLIC ROADS

PROJECT S NO. 23(3)  
SHEET (1) OF 108 SHEETS

WESTER - MARTIN, INC. CONSULTING ENGINEERS, PALM BEACH, FLORIDA





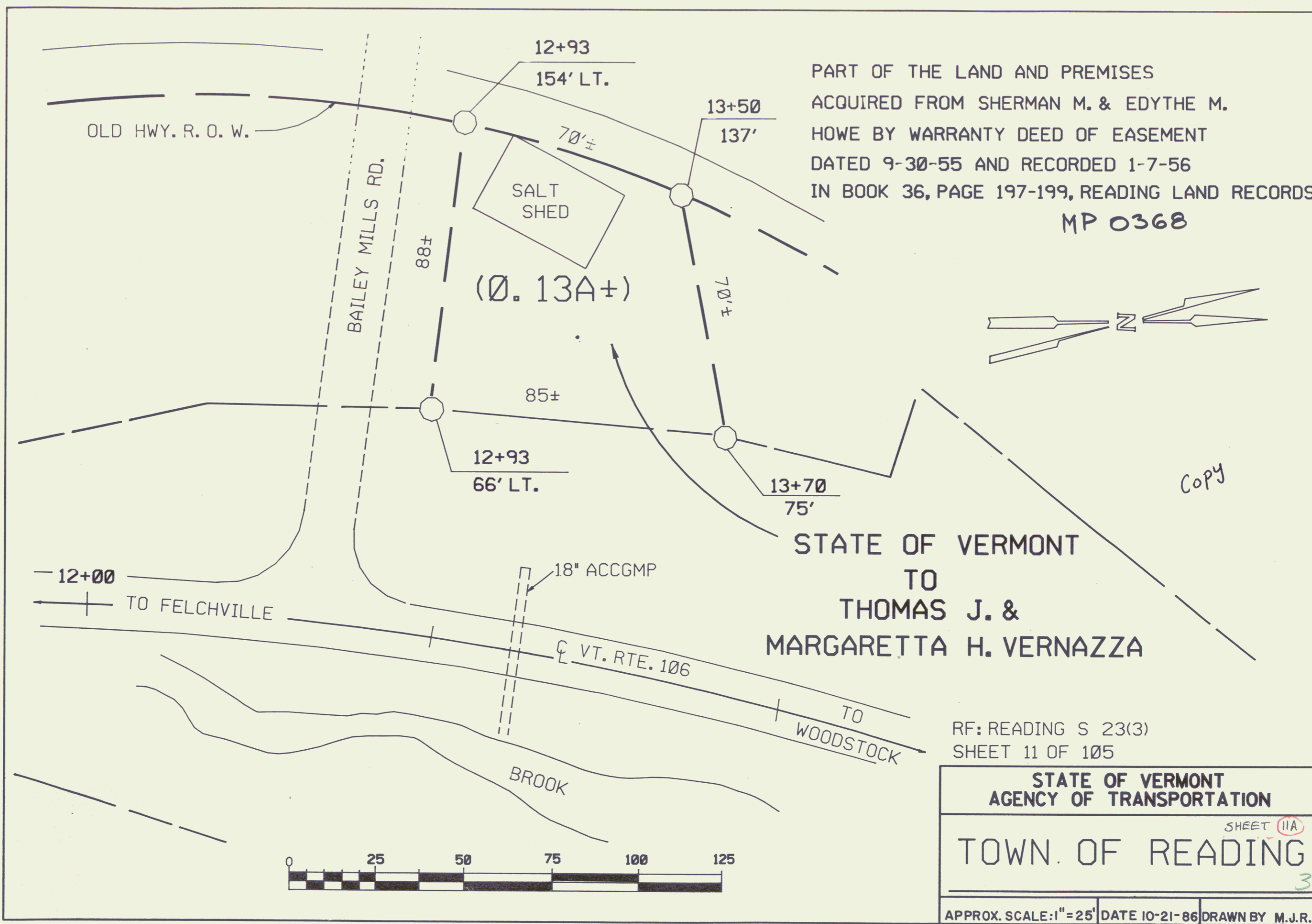
JEWETT WEBSTER-MARTIN INC. 8-54 11-54

JEWETT WEBSTER-MARTIN INC. 8-54 11-54

B.M. 2B 8+25.14 18" Maple 960.71

READING S 23(3)  
SHEET 11 OF 105

B.M. 1-S-R-24" OAK 220'-LT. 15+20' ELEV. 965.31



PART OF THE LAND AND PREMISES  
 ACQUIRED FROM SHERMAN M. & EDYTHE M.  
 HOWE BY WARRANTY DEED OF EASEMENT  
 DATED 9-30-55 AND RECORDED 1-7-56  
 IN BOOK 36, PAGE 197-199, READING LAND RECORDS.  
 MP 0368

STATE OF VERMONT  
 TO  
 THOMAS J. &  
 MARGARETTA H. VERNAZZA

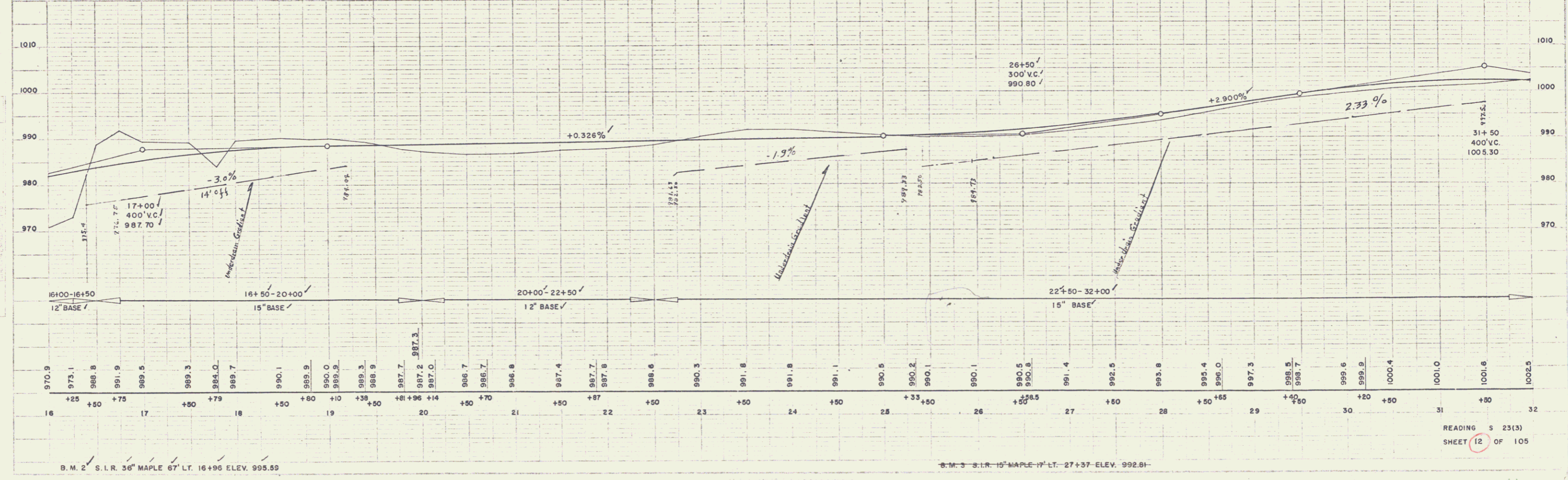
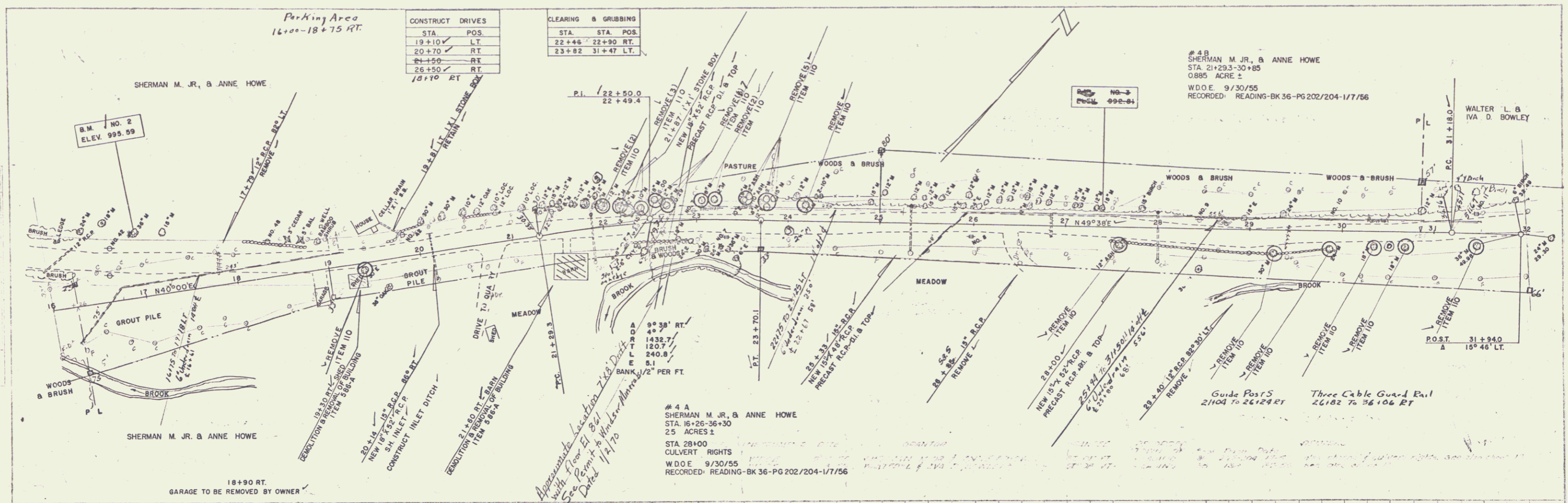
RF: READING S 23(3)  
 SHEET 11 OF 105

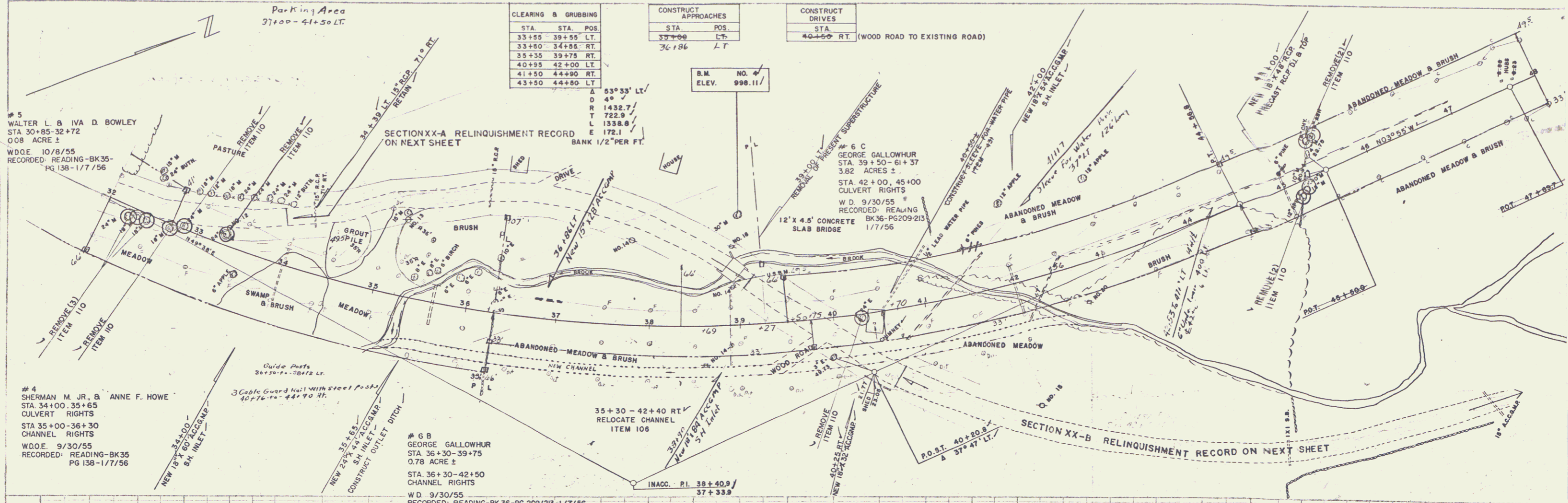
STATE OF VERMONT AGENCY OF TRANSPORTATION	
SHEET 11A	
TOWN OF READING	
3	
APPROX. SCALE: 1" = 25'	DATE 10-21-86
DRAWN BY M.J.R.	

COPY

JEWETT  
WEBSTER-MARTIN INC.  
11-54

JEWETT  
WEBSTER-MARTIN INC.  
11-54





CLEARING & GRUBBING			CONSTRUCT APPROACHES			CONSTRUCT DRIVES		
STA.	STA.	POS.	STA.	POS.		STA.		
33+55	39+55	LT.	37+00			40+50	RT.	(WOOD ROAD TO EXISTING ROAD)
33+60	34+55	RT.	36+86	LT.				
35+35	39+75	RT.						
40+95	42+00	LT.						
41+50	44+80	RT.						
43+50	44+80	LT.						

#5  
WALTER L. & IVA D. BOWLEY  
STA. 30+85-32+72  
0.08 ACRE ±  
W.D.E. 10/8/55  
RECORDED: READING-BK35-  
PG 138-1/7/56

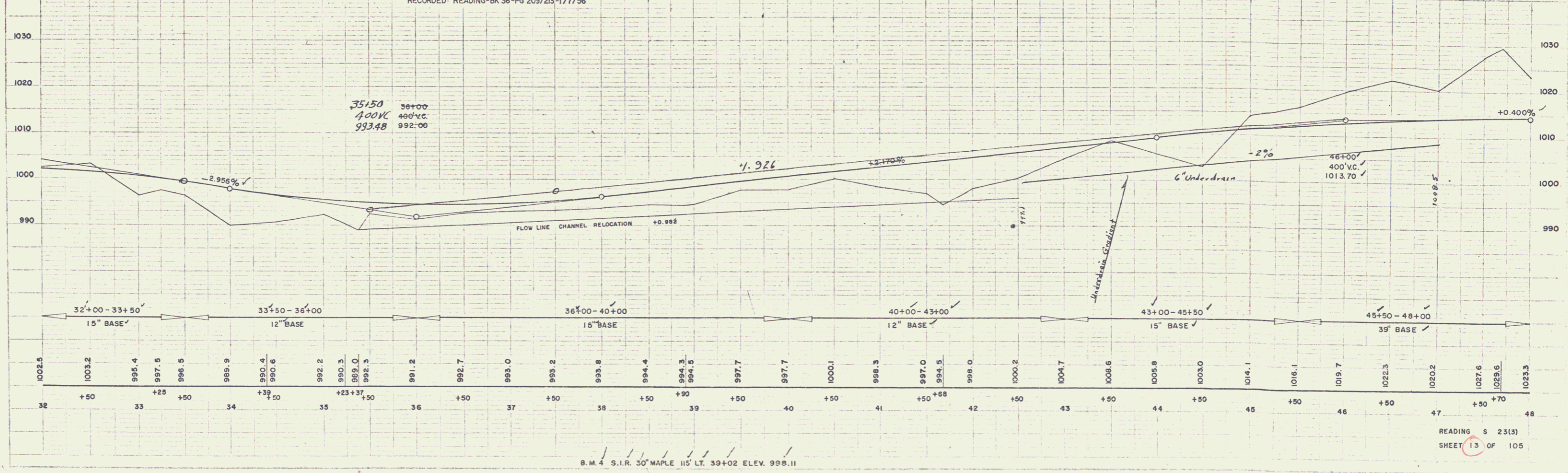
#4  
SHERMAN M. JR. & ANNE F. HOWE  
STA. 34+00-35+65  
CULVERT RIGHTS  
STA. 35+00-36+30  
CHANNEL RIGHTS  
W.D.E. 9/30/55  
RECORDED: READING-BK35  
PG 138-1/7/56

SECTION XX-A RELINQUISHMENT RECORD ON NEXT SHEET

SECTION XX-B RELINQUISHMENT RECORD ON NEXT SHEET

#6 C  
GEORGE GALLOWHUR  
STA. 39+30-61+37  
3.82 ACRES ±  
STA. 42+00, 45+00  
CULVERT RIGHTS  
W.D. 9/30/55  
RECORDED: READING  
BK35-PG209-213  
1/7/56

#6 B  
GEORGE GALLOWHUR  
STA. 36+30-39+75  
0.78 ACRE ±  
STA. 36+30-42+50  
CHANNEL RIGHTS  
W.D. 9/30/55  
RECORDED: READING-BK36-PG 209/213-1/7/56



WEBSTER-MARTIN INC. 11-54

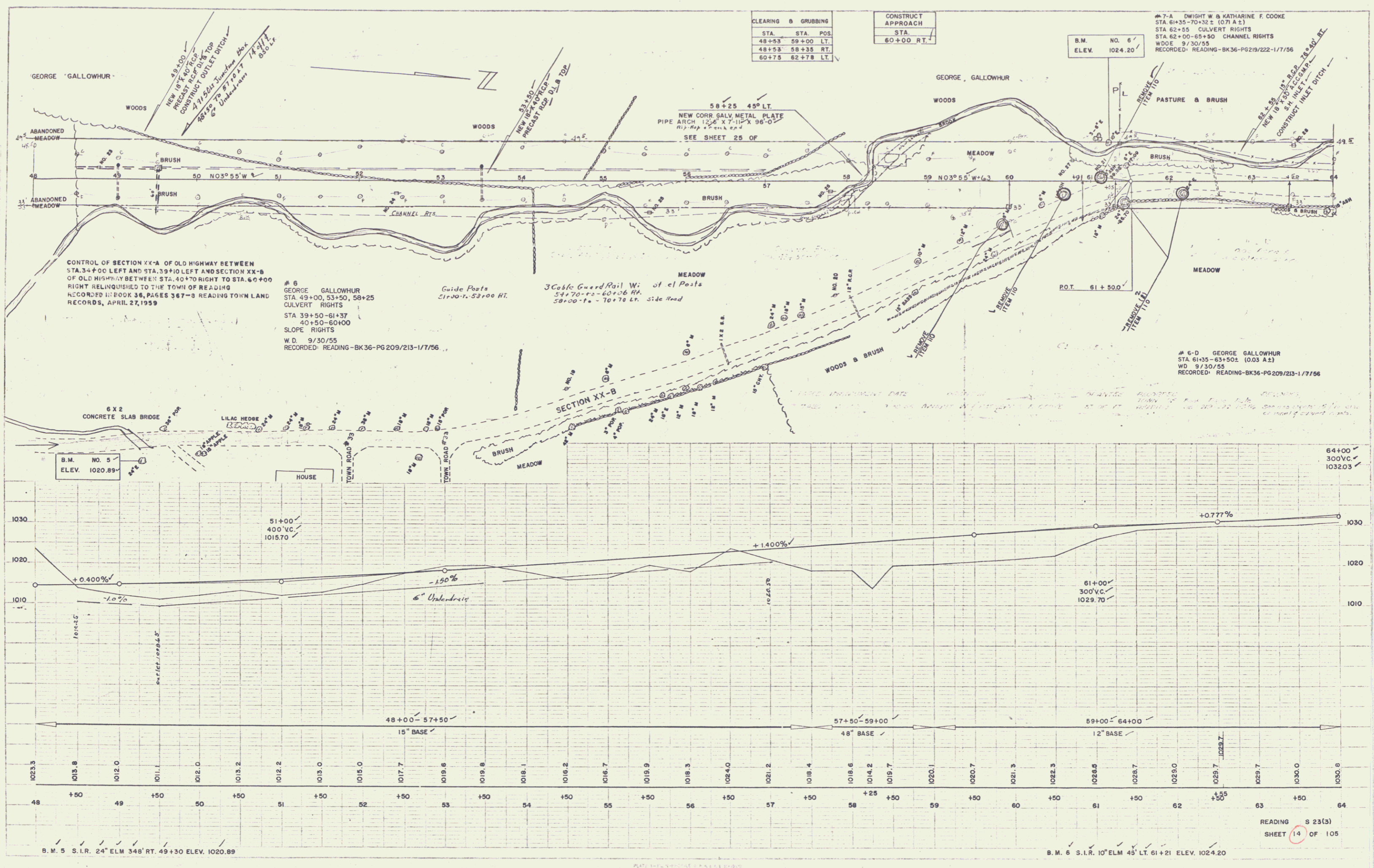
WEBSTER-MARTIN INC. 11-54

B.M. 4 S.I.R. 30' MAPLE 115' LT. 39+02 ELEV. 998.11

5

JEFFREY  
WEBSTER-MARTIN INC.  
11-54

JEFFREY  
WEBSTER-MARTIN INC.  
11-54



CLEARING & GRUBBING	
STA.	STA. POS.
48+53	59+00 LT.
48+53	58+35 RT.
60+75	62+78 LT.

CONSTRUCT APPROACH	
STA.	
60+00	RT.

B.M. NO. 6  
ELEV. 1024.20

#7-A DWIGHT W & KATHARINE F COOKE  
STA 61+35-70+32 ± (0.71 A ±)  
STA 62+55 CULVERT RIGHTS  
STA 62+00-65+50 CHANNEL RIGHTS  
W.D. 9/30/55  
RECORDED: READING-BK36-PG219/222-1/7/56

CONTROL OF SECTION XX-A OF OLD HIGHWAY BETWEEN STA. 34+00 LEFT AND STA. 39+10 LEFT AND SECTION XX-B OF OLD HIGHWAY BETWEEN STA. 40+70 RIGHT TO STA. 60+00 RIGHT RELINQUISHED TO THE TOWN OF READING RECORDED IN BOOK 36, PAGES 367-8 READING TOWN LAND RECORDS, APRIL 27, 1959

# 6 GEORGE GALLOWHUR  
STA. 49+00, 53+50, 58+25  
CULVERT RIGHTS  
STA. 39+50-61+37  
40+50-60+00  
SLOPE RIGHTS  
W.D. 9/30/55  
RECORDED: READING-BK36-PG 209/213-1/7/56

# 6-D GEORGE GALLOWHUR  
STA. 61+35-63+50 ± (0.03 A ±)  
W.D. 9/30/55  
RECORDED: READING-BK36-PG209/213-1/7/56

B.M. 5 S.I.R. 24' ELM 348' RT. 49+30 ELEV. 1020.89

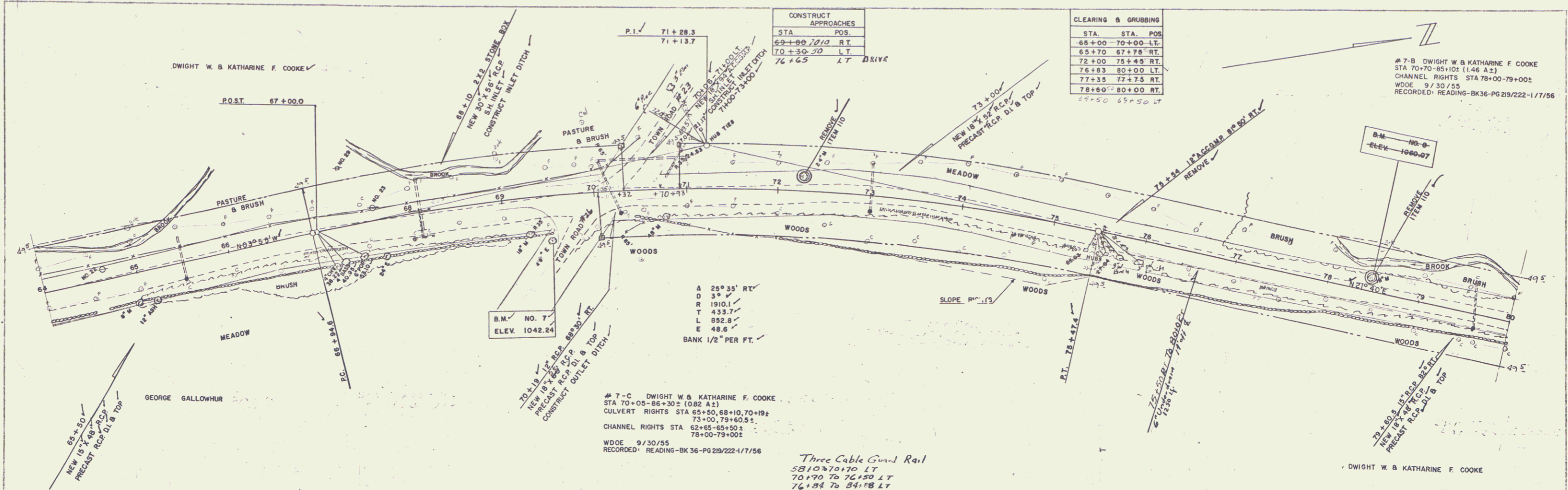
B.M. 6 S.I.R. 10' ELM 45' LT. 61+21 ELEV. 1024.20

READING S 23(3)  
SHEET 14 OF 105

6

8-34  
 DWIGHT W. & KATHARINE F. COOKE  
 11-34  
 ELEV. 1030.8  
 1031.6  
 1032.4  
 1033.9  
 1036.2  
 1038.7  
 1041.1  
 1041.5  
 1041.8  
 1042.0  
 1040.8  
 1041.2  
 1042.3  
 1043.6  
 1044.3  
 1044.7  
 1045.1  
 1046.8  
 1047.6  
 1048.5  
 1051.4  
 1053.5  
 1056.2  
 1059.4  
 1062.7  
 1064.2  
 1064.7  
 1065.2  
 1065.3  
 1066.0  
 1066.0  
 1065.0  
 1063.9  
 1062.8  
 1062.3  
 1061.9  
 1061.0  
 1061.8  
 1062.0

8-34  
 DWIGHT W. & KATHARINE F. COOKE  
 11-34  
 ELEV. 1030.8  
 1031.6  
 1032.4  
 1033.9  
 1036.2  
 1038.7  
 1041.1  
 1041.5  
 1041.8  
 1042.0  
 1040.8  
 1041.2  
 1042.3  
 1043.6  
 1044.3  
 1044.7  
 1045.1  
 1046.8  
 1047.6  
 1048.5  
 1051.4  
 1053.5  
 1056.2  
 1059.4  
 1062.7  
 1064.2  
 1064.7  
 1065.2  
 1065.3  
 1066.0  
 1066.0  
 1065.0  
 1063.9  
 1062.8  
 1062.3  
 1061.9  
 1061.0  
 1061.8  
 1062.0

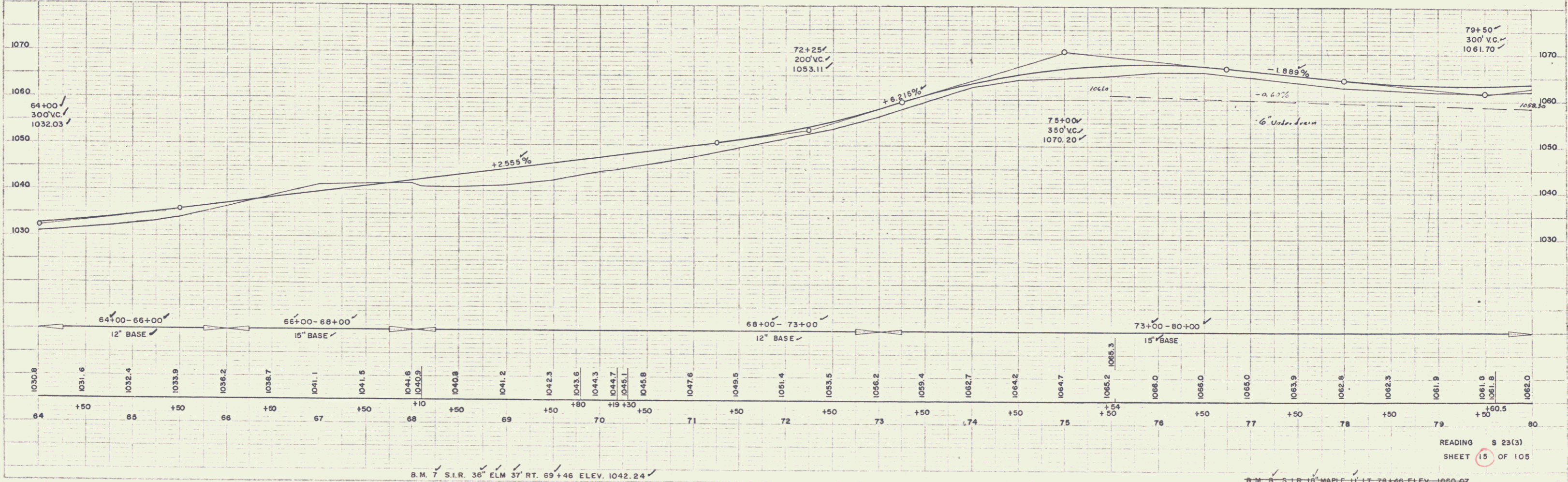


CONSTRUCT APPROACHES	
STA.	POS.
69+00	70+00 RT
70+30	70 LT
74+65	LT DRIVE

CLEARING & GRUBBING	
STA.	STA. POS.
66+00	70+00 LT
65+70	67+78 RT
72+00	75+45 RT
76+83	80+00 LT
77+35	77+75 RT
78+80	80+00 RT
49+50 65+50 LT	

# 7-C DWIGHT W & KATHARINE F. COOKE  
 STA 70+00-86+30± (0.82 A±)  
 CULVERT RIGHTS STA 65+50, 68+10, 70+19±  
 CHANNEL RIGHTS STA 62+45-65+50 ±  
 78+00-79+00±  
 WDOE 9/30/55  
 RECORDED READING-BK 36-PG 229/222-1/7/56

Three Cable Gound Rail  
 581070170 LT  
 70170 To 76150 LT  
 76150 To 84178 LT



B.M. 7 S.I.R. 36' ELM 37' RT. 69+46 ELEV. 1042.24

B.M. 8 S.I.R. 18' MAPLE 11' LT. 78+46 ELEV. 1060.07

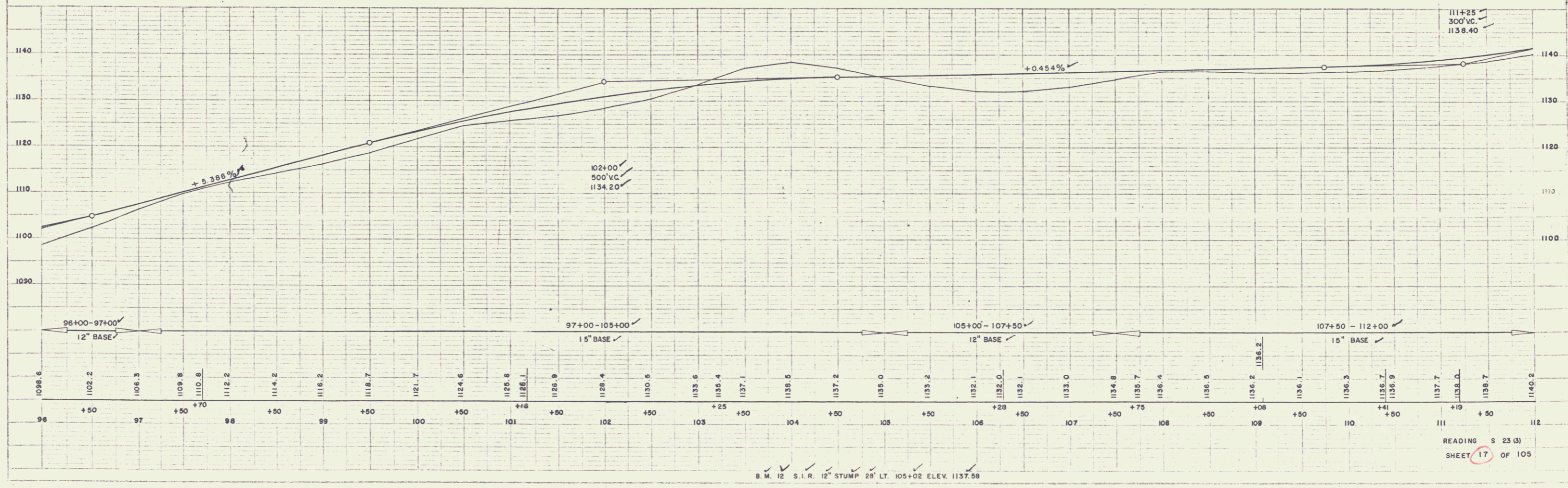
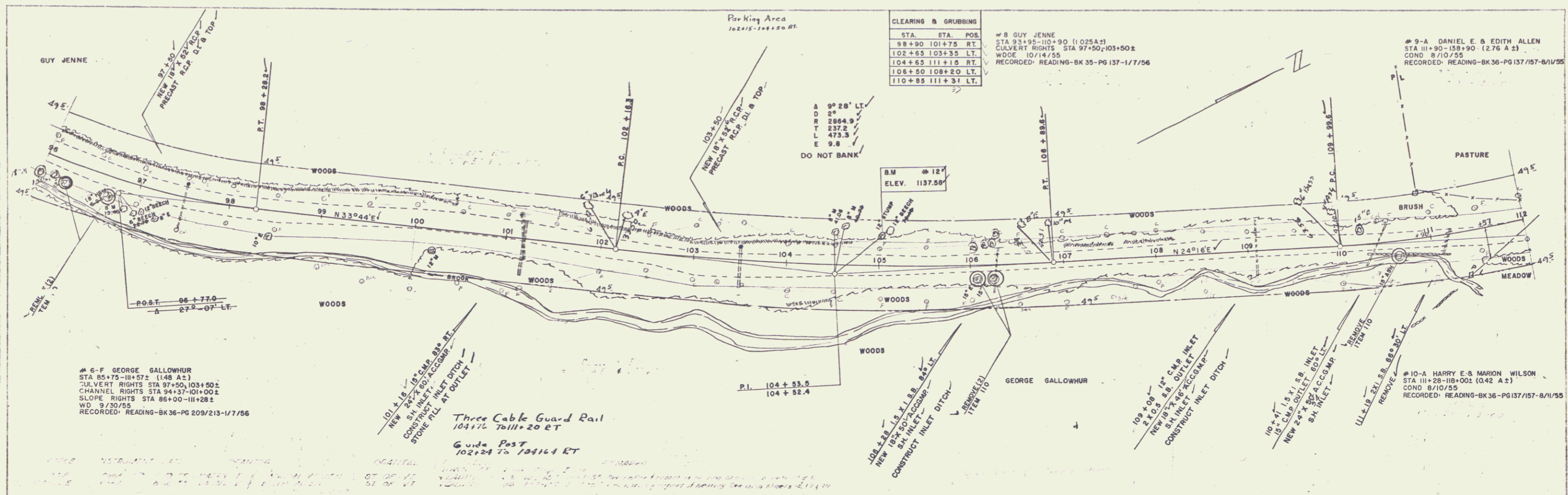
READING S 23(3)  
 SHEET 15 OF 105

7



JEFFREY  
WEBSTER-MARTIN INC. 11-44

JEFFREY  
WEBSTER-MARTIN INC. 11-44



STA.	STA. POS.
98+90	101+75 RT
102+55	103+35 LT
104+53	111+15 RT
106+50	108+20 LT
110+85	111+31 LT

#8 GUY JENNE  
STA 93+95-101+90 (1.025A-2)  
CULVERT RIGHTS STA 97+50-103+50±  
WOODS 10/14/55  
RECORDED READING-BK 35-PG 137-1/7/56

#9-A DANIEL E. & EDITH ALLEN  
STA 111+90-118+90 (2.76 A±)  
COND 8/10/55  
RECORDED READING-BK 36-PG 137/157-8/11/55

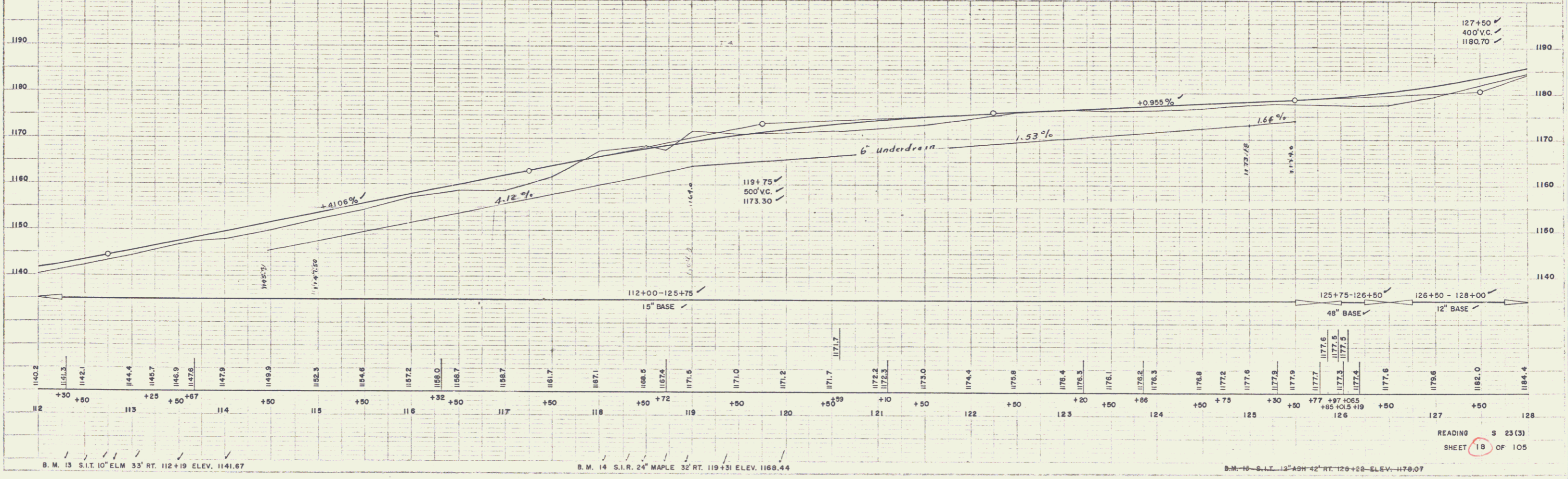
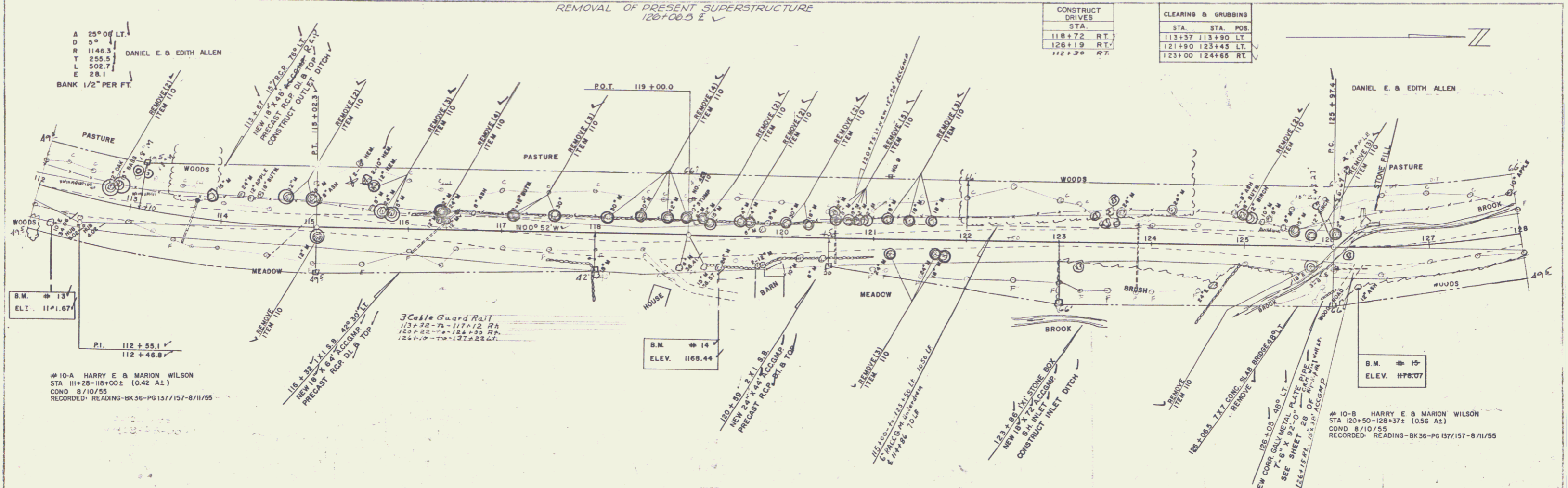
#6-F GEORGE GALLOWHUR  
STA 85+75-111+57± (1.48 A±)  
CULVERT RIGHTS STA 97+50-103+50±  
CHANNEL RIGHTS STA 94+37-101+00±  
SLOPE RIGHTS STA 86+00-111+28±  
WD 9/30/55  
RECORDED READING-BK 36-PG 209/213-1/7/56

Three Cable Guard Rail  
104+76 To 111+20 ET  
Guide Post  
102+24 To 104164 ET

#10-A HARRY E. & MARION WILSON  
STA 111+28-118+00± (0.42 A±)  
COND 8/10/55  
RECORDED READING-BK 36-PG 137/157-8/11/55

READING S 23 (3)  
SHEET 17 OF 105

9



PLAN  
 JEWETT  
 WEBSTER-MARTIN INC. 11-54

PLAN  
 JEWETT  
 WEBSTER-MARTIN INC. 11-54

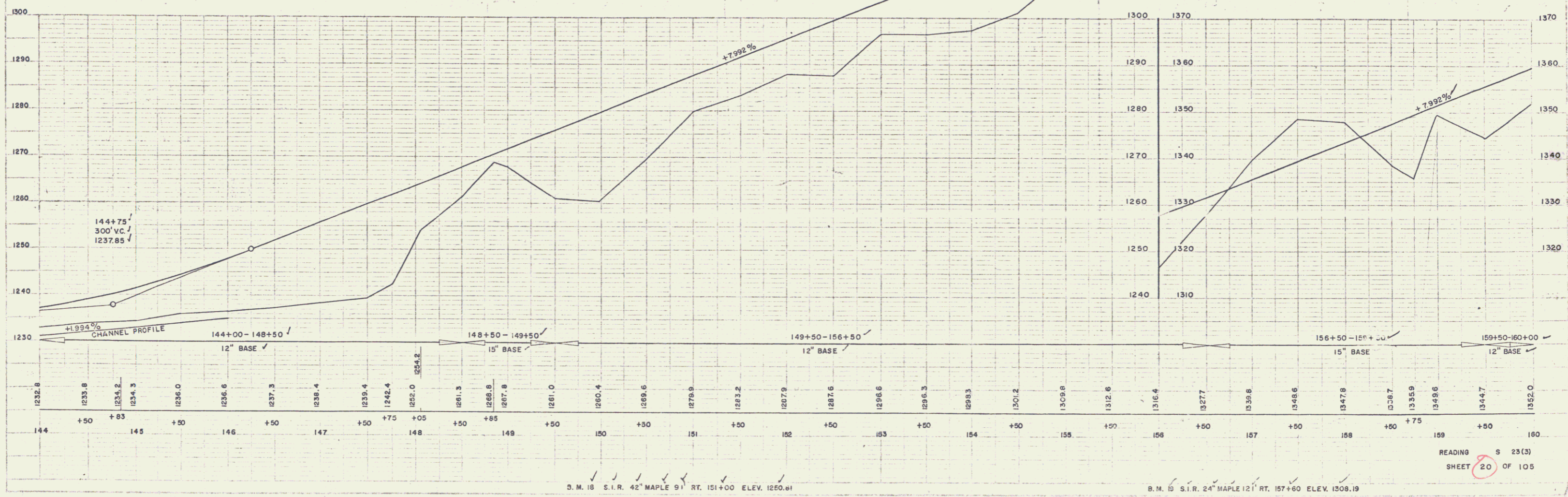
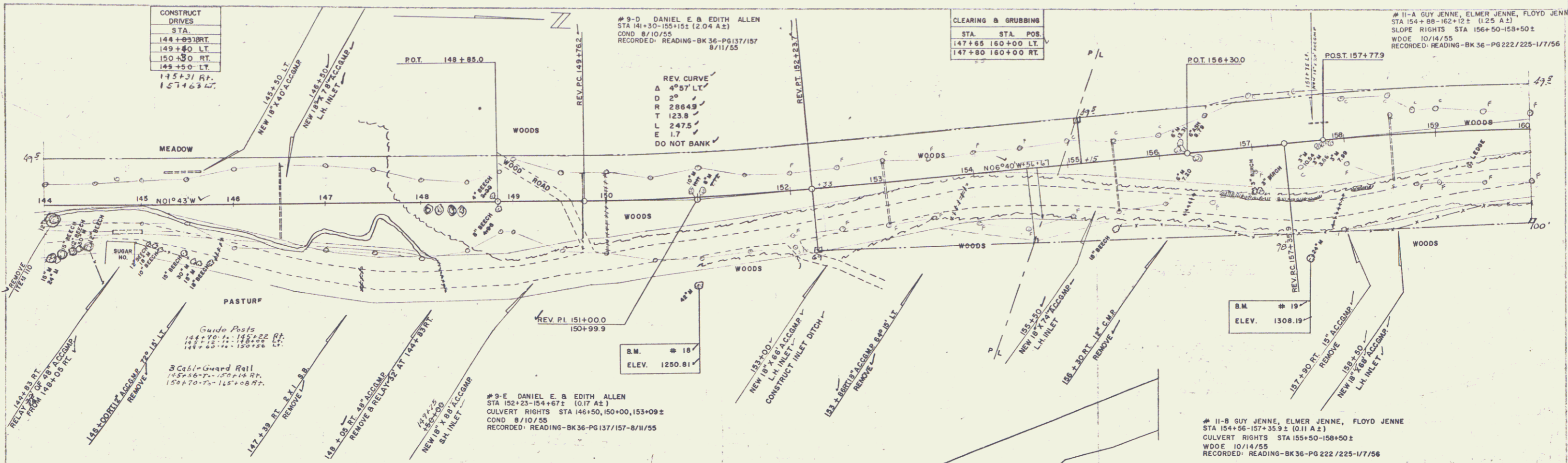
READING S 23(3)  
SHEET 18 OF 105

10



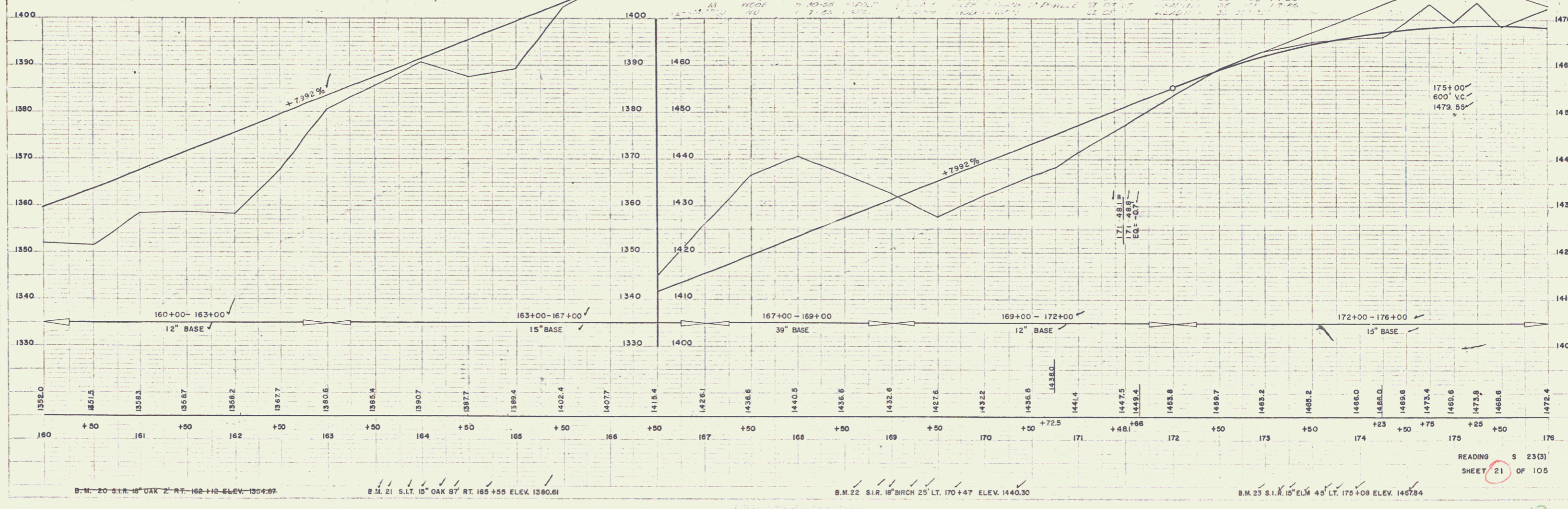
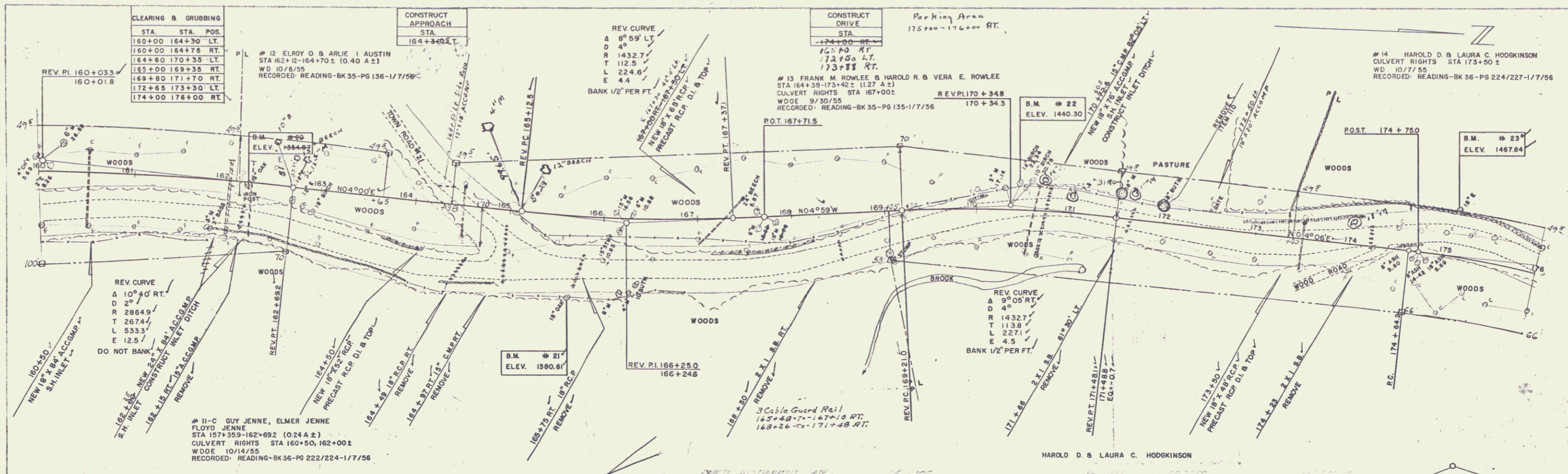
3-95  
PALMER  
WEBSTER-MARTIN INC.  
11-54

3-95  
PALMER  
WEBSTER-MARTIN INC.  
11-54



READING S 23(3)  
SHEET 20 OF 105

12

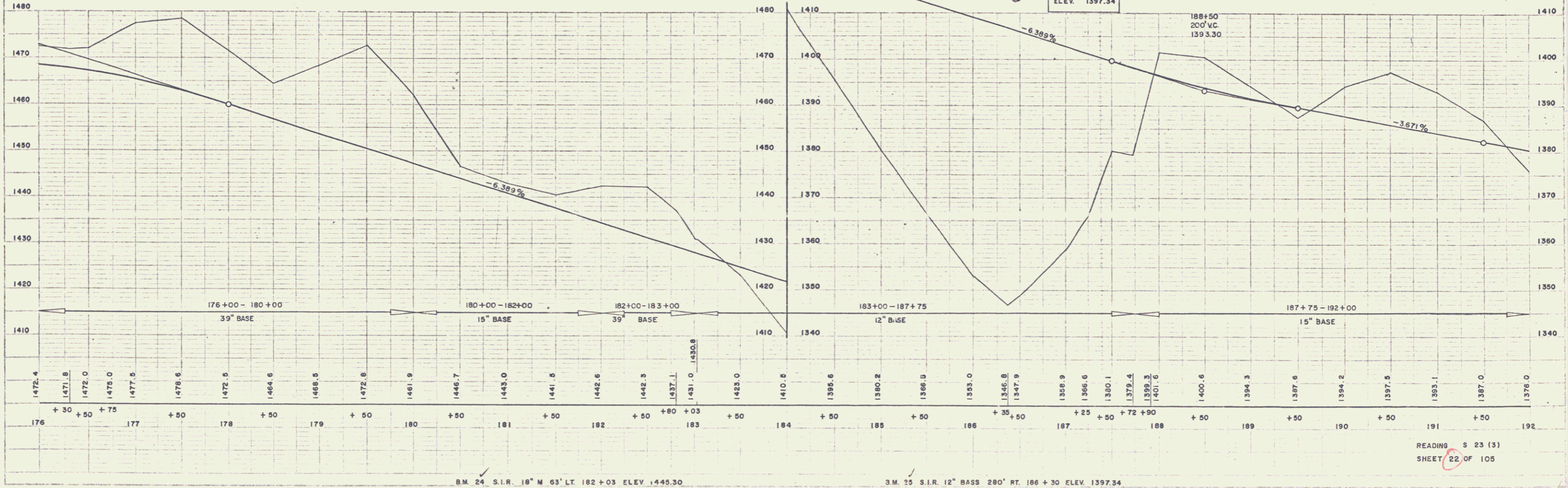
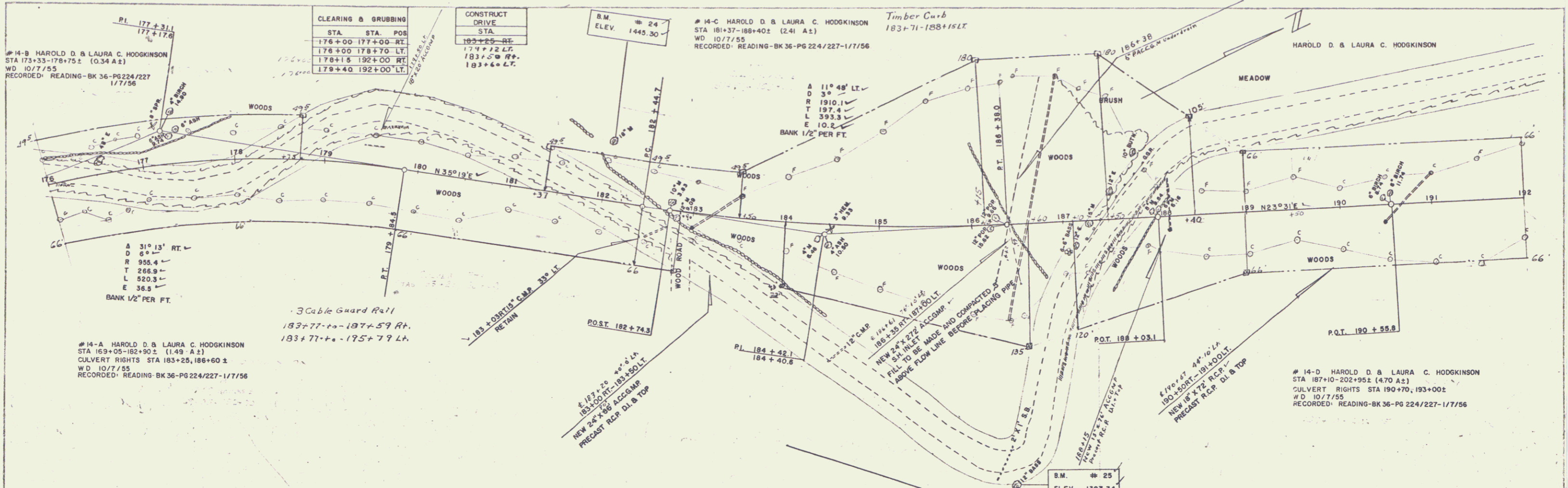


11-54  
 HARRIS  
 WEBSTER-MARTIN INC.

11-54  
 HARRIS  
 WEBSTER-MARTIN INC.

READING S 23(3)  
 SHEET 21 OF 105

13

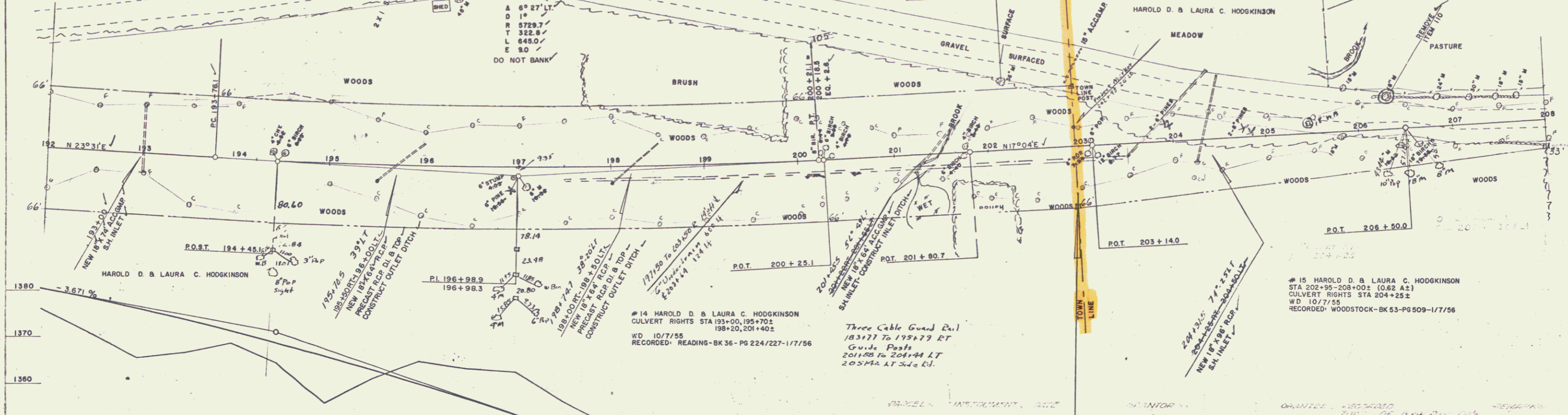


PLAN  
 JEWETT INC. 8-54  
 WEBSTER-MARTIN INC. 11-54  
 DATE: 10/7/55  
 NO. 107/55

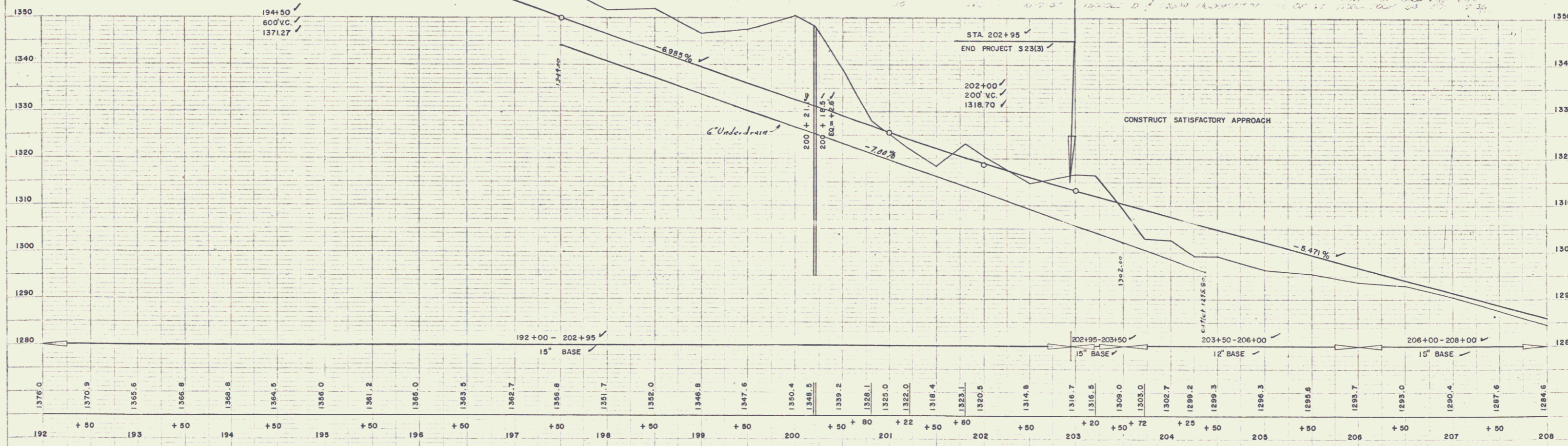
PROFILE  
 JEWETT INC. 8-54  
 WEBSTER-MARTIN INC. 11-54  
 DATE: 10/7/55  
 NO. 107/55

14

#14 HAROLD D. & LAURA C. HODGKINSON  
 SLOPE RIGHTS STA 194+00-196+00±  
 WD 10/7/55  
 RECORDED: READING-BK 36-PG 224/227-1/7/56



CONSTRUCT DRIVE		CLEARING & GRUBBING		Approach
STA.	RT.	STA.	RT.	205+50 LT.
204+20	RT.	192+00	207+50	
205+00	LT.	192+00	204+00	



PLAN  
 #14 HAROLD D. & LAURA C. HODGKINSON  
 SLOPE RIGHTS STA 194+00-196+00±  
 WD 10/7/55  
 RECORDED: READING-BK 36-PG 224/227-1/7/56

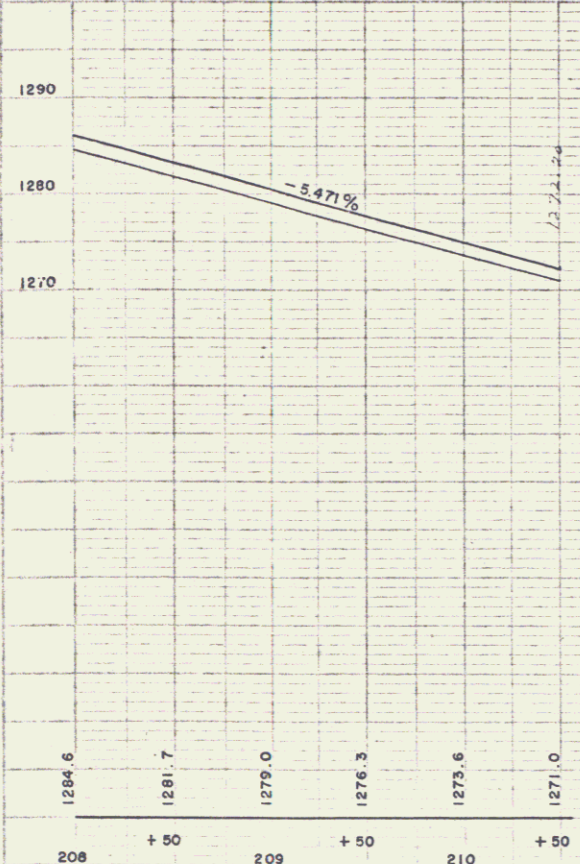
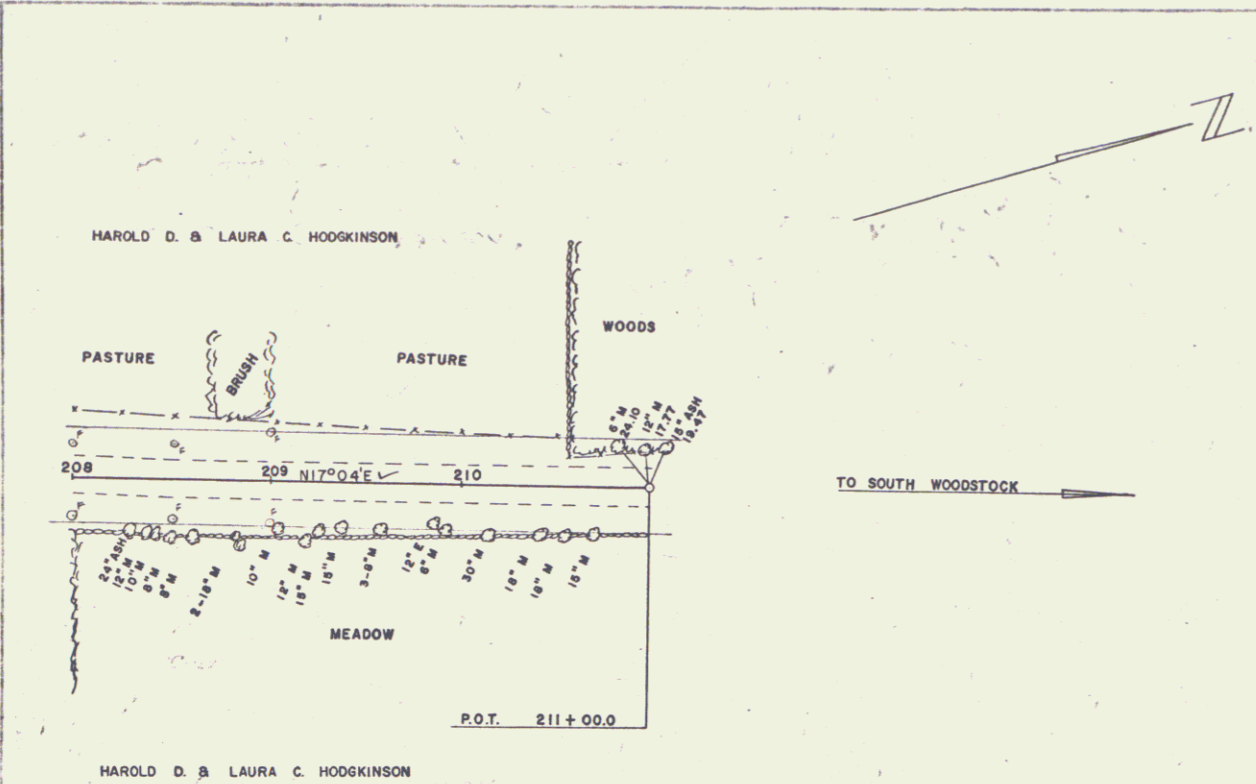
PROFILE  
 #14 HAROLD D. & LAURA C. HODGKINSON  
 SLOPE RIGHTS STA 194+00-196+00±  
 WD 10/7/55  
 RECORDED: READING-BK 36-PG 224/227-1/7/56

READING S 23 (3)  
 SHEET 23 OF 105

15

PROJECT  
 WEBSTER - MARTIN INC. 11-54  
 11-54  
 11-54

PROJECT  
 WEBSTER - MARTIN INC. 11-54  
 11-54  
 11-54



16