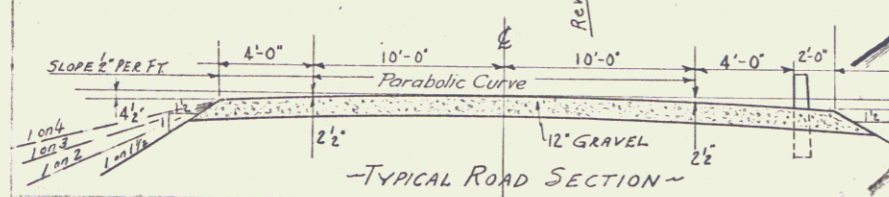
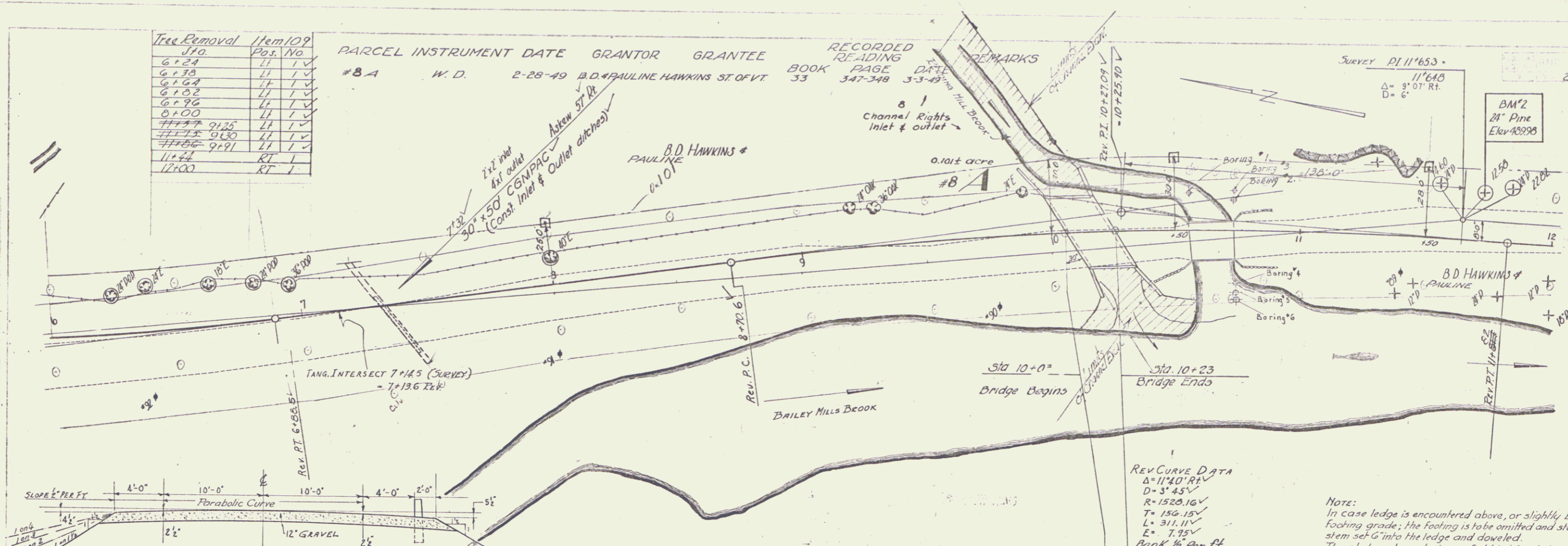


Tree Removal	Item 109	Pos. No	Pos. No
6124	11	11	11
6128	11	11	11
6164	11	11	11
6162	11	11	11
6196	11	11	11
6100	11	11	11
7777 9125	11	11	11
7775 9130	11	11	11
7786 9121	11	11	11
1144	RT	1	1
12100	RT	1	1

PARCEL INSTRUMENT DATE GRANTOR GRANTEE  
 #8A W.D. 2-28-49 B.D. PAULINE HAWKINS ST. OF VT.

RECORDED READING DATE  
 BOOK PAGE DATE  
 33 347-348 3-3-49

Survey PI 11°65.3  
 11°64.8  
 Δ = 3' 07" Rt.  
 D = 6'



LIST OF SHEETS

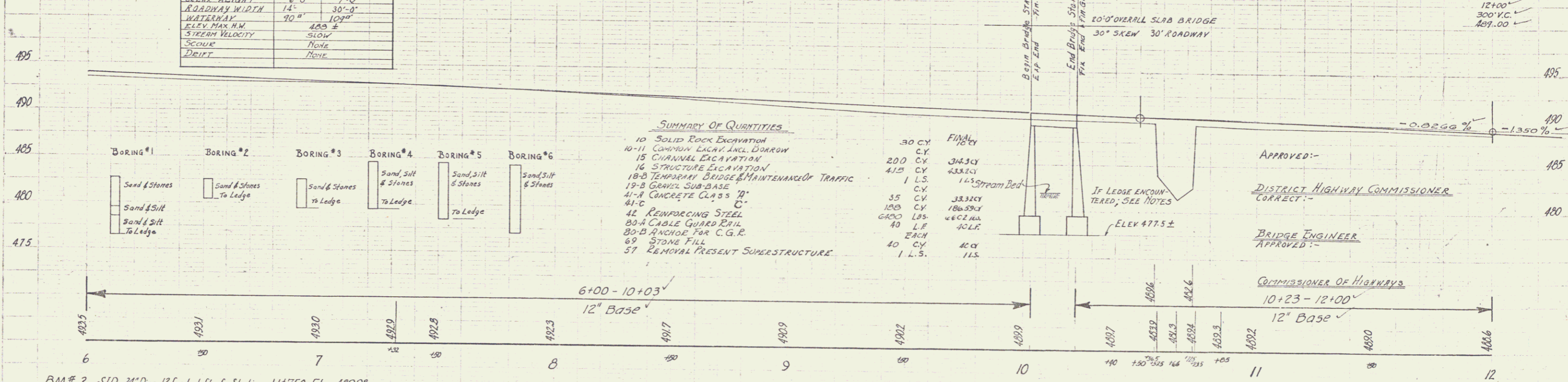
- 1-4 PLAN & PROFILE
- 5 S.L.R.G. 30' FOR 30' ROADWAY - 11-10'
- 6 S.S.B.Z. 20' OVERALL - 30' ROADWAY - MODIFY TO 30' SKEW ON 3/45 CURVE (BANK 1/2% PER FOOT)
- 7 SB50 - 1 CABLE RAIL ON BRIDGE FOR SPAN ABOVE
- 8 SB11 BARRICADES, SIGNS, & LIGHTS
- 9 SB20 DETAILS 'D' & 'J'

BRIDGE DATA

TYPE	OVERALL LENGTH	CLEAR SPAN	CLEAR HEIGHT	ROADWAY WIDTH	WATERWAY	ELEV. MAX. H.M.	STREAM VELOCITY	SCOUR	DRIFT
OVERLAP	17'-0"	15'-6"	6'-0"	14'	30'-0"	400 ±	SLOW	NONE	NONE

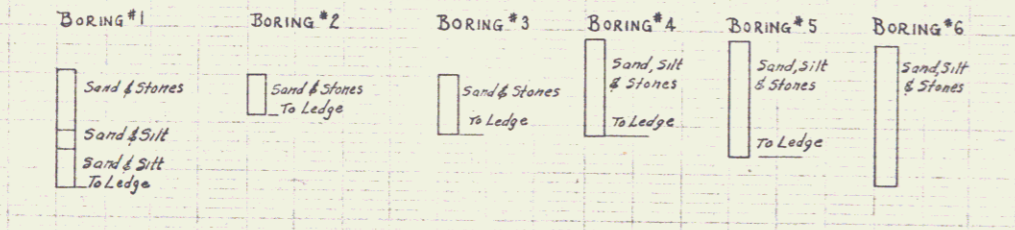
REV. CURVE DATA  
 Δ = 11°40' 00"  
 D = 3' 45"  
 R = 1520.16'  
 T = 156.15'  
 L = 311.11'  
 E = 7.75'  
 BANK 1/2% PER FT.

NOTE:  
 In case ledge is encountered above, or slightly below, the indicated footing grade, the footing is to be omitted and standard abutment stem set G into the ledge and doweled.  
 The abutments and wings of old bridge to be cut down to Elev. 486.00 or lower, before filling of old channel. Payment for this work to be made under the item of "Solid Rock Excavation."



SUMMARY OF QUANTITIES

DESCRIPTION	FINAL	FINAL
10 SOLID ROCK EXCAVATION	.30 CY	10.0
10-11 COMMON LUMPY ANCL. DORROW	C.Y.	34.3 CY
13 CHANNEL EXCAVATION	200 CY	33.2 CY
16 STRUCTURE EXCAVATION	412 CY	1.5
18-B TEMPORARY BRIDGE & MAINTENANCE OF TRAFFIC	1 L.S.	1.5 Stream Bed
19-B GRAVEL SUB-BASE	C.Y.	35 CY
41-A CONCRETE CLASS 10'	C.Y.	33.32 CY
41-C	C.Y.	100 CY
42 REINFORCING STEEL	6000 LBS.	186.39 CY
80-A CABLE GUARD RAIL	40 L.F.	40 L.F.
80-B ANCHOR FOR C.G.R.	EACH	40 CY
89 STONE FILL	40 CY	40 CY
87 REMOVAL PRESENT SUPERSTRUCTURE	1 L.S.	11.5



APPROVED:-  
 DISTRICT HIGHWAY COMMISSIONER  
 CORRECT:-  
 BRIDGE ENGINEER  
 APPROVED:-

BM # 2 SIR 24" Pine 12 feet left of Station 11+750 Elev. 489.98

Rev. Banking Note Added 10/13/48 L.M.B.

READING - PART C  
 Sheet 23 of 62 Sheets  
 Series 5 No. 23 (2)