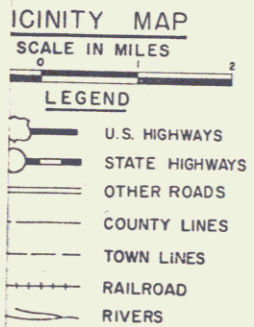


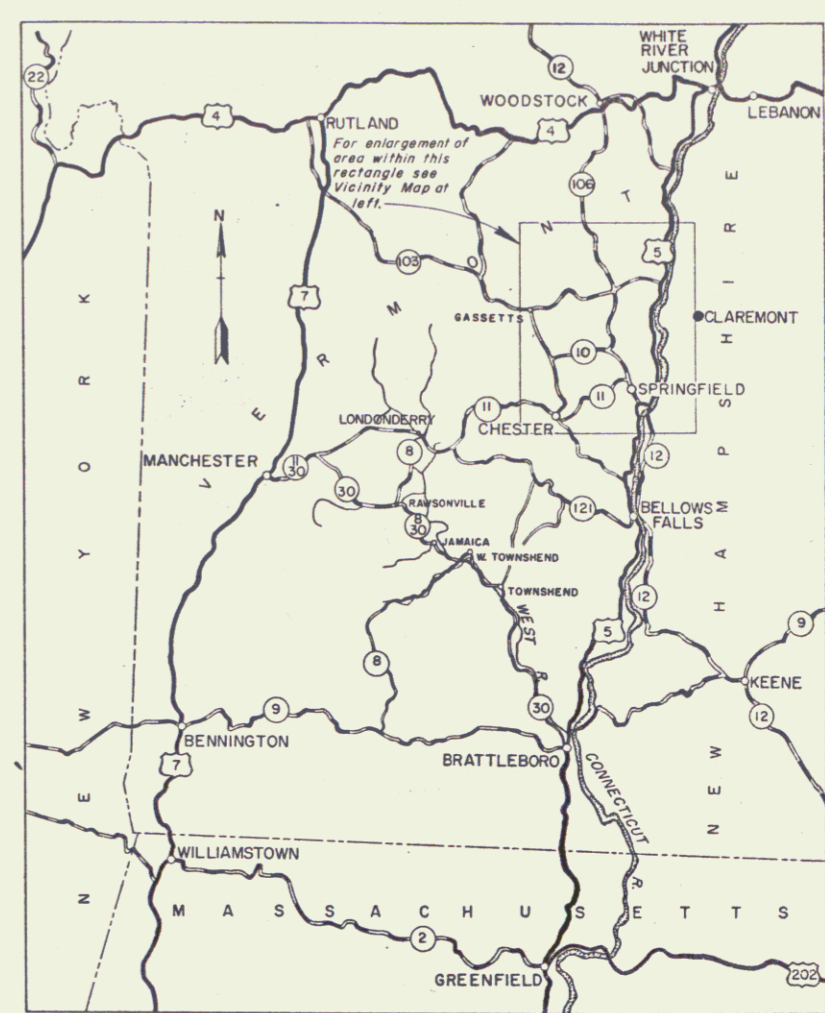
Box 206
 3407
 Springfield-Weathersfield
 Rt. 106 & Hartness Airport Access Rd.

INDEX TO DRAWINGS		
REVISION	SHEET NO.	TITLE
1		PROJECT LOCATION AND INDEX
2		KEY PLAN AND PROFILE
3		TYPICAL SECTION SHEET
4		ITEM DETAIL & DRAINAGE SHEET
5		STANDARD STRUCTURES
6		STANDARD STRUCTURES
7		CONSTRUCTION DETAILS AND STANDARD STRUCTURES
8		BARRICADES - SIGNS AND LIGHTS
WEATHERSFIELD		
9		PLAN, PROFILE, GRADING AND DRAINAGE STA. 27 + 00 TO STA. 37 + 00
10		PLAN, PROFILE, GRADING AND DRAINAGE STA. 37 + 00 TO STA. 48 + 00
11		PLAN, PROFILE, GRADING AND DRAINAGE STA. 48 + 00 TO STA. 58 + 00
SPRINGFIELD - WEATHERSFIELD		
12		PLAN, GRADING AND DRAINAGE ROUTE 106 STA. 5 + 00 TO STA. 19 + 00
ROUTE 106		
13		PROFILES ROUTE 106 STA. 5 + 00 TO STA. 20 + 50, LINE A STA. 0 + 00 TO STA. 3 + 21.95 LINE B STA. 3 + 73.11 TO STA. 8 + 72.2"
14		PLAN, GRADING AND DRAINAGE ROUTE 106 STA. 19 + 00 TO STA. 35 + 00
15		PROFILE ROUTE 106 STA. 20 + 50 TO STA. 36 + 00
16		PLAN, GRADING AND DRAINAGE ROUTE 106 STA. 35 + 00 TO STA. 50 + 50
HARTNESS AIRPORT ACCESS ROAD		
17		PROFILE ROUTE 106 STA. 36 + 00 TO STA. 51 + 00
18		PLAN, GRADING AND DRAINAGE ROUTE 106 STA. 50 + 50 TO STA. 66 + 00
19		PROFILE ROUTE 106 STA. 51 + 00 TO STA. 66 + 00
20		PLAN, GRADING AND DRAINAGE ROUTE 106 STA. 66 + 00 TO STA. 79 + 00
21		PROFILE ROUTE 106 STA. 66 + 00 TO STA. 79 + 00
22		PLAN, GRADING AND DRAINAGE HARTNESS AIRPORT ACCESS ROAD STA. 9 + 00 TO STA. 25 + 40
23		PROFILE HARTNESS AIRPORT ACCESS ROAD STA. 3 + 66.53 TO STA. 15 + 00
24		PROFILE HARTNESS AIRPORT ACCESS ROAD STA. 15 + 00 TO STA. 25 + 40
GENERAL PLAN CULVERT		
25		GENERAL PLAN CULVERT STA. 25 + 10
26		PLAN, ELEVATIONS AND SECTIONS CULVERT STA. 25 + 10
27		SECTIONS AND DETAILS CULVERT STA. 25 + 10
28		REINFORCING STEEL SCHEDULE CULVERT STA. 25 + 10
29		GENERAL PLAN CULVERT STA. 36 + 03
30		PLAN, ELEVATIONS AND SECTIONS CULVERT STA. 36 + 03
31		SECTIONS AND DETAILS CULVERT STA. 36 + 03
32		REINFORCING STEEL SCHEDULE CULVERT STA. 36 + 03
CROSS SECTIONS		
33-42		STA. 27 + 00 TO STA. 58 + 00 WEATHERSFIELD
43-44		STA. 233 + 50 TO STA. 243 + 00 ROUTE 106
45-84		STA. 5 + 50 TO STA. 79 + 00 SPRINGFIELD - WEATHERSFIELD
85		STA. 0 + 00 TO STA. 2 + 75 CHANNEL STA. 25 + 10
86		STA. 0 + 00 TO STA. 3 + 00 CHANNEL STA. 25 + 03
87-98		STA. 4 + 00 TO STA. 25 + 40 HARTNESS AIRPORT ACCESS ROAD
99		SUBSURFACE EXPLORATIONS

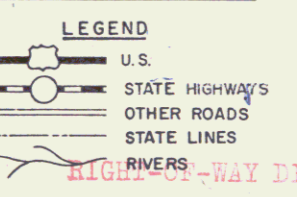
CONVENTIONAL SIGNS	CURVE DATA
COUNTY LINE	DEFLECTION OF ANGLE
TOWN LINE	DEGREE OF CURVE
FENCE LINE	RADIUS OF CURVE
STONE WALL	TANGENT DISTANCE
UNFENCED PROPERTY	LENGTH OF CURVE
GUARD RAIL	EXTERNAL DISTANCE
TRAVELED WAY	POINT OF INTERSECTION
SURVEY LINE	POINT OF CURVE
CULVERT	POINT OF TANGENT
DROP INLET	POINT ON TANGENT
POWER POLE	POINT ON SUB-TANGENT
TELEPHONE POLE	POINT ON CURVE
TREES	
HEDGE	
GRADE ELEVATION	
GROUND ELEVATION	



TOWNS OF
SPRINGFIELD-WEATHERSFIELD
 Project HARTNESS AIRPORT 1-4453
 Pin # ODR 244
 Route VT116
 Date 7/1/1958



LOCATION MAP
SCALE: 1 IN = 8 MI.

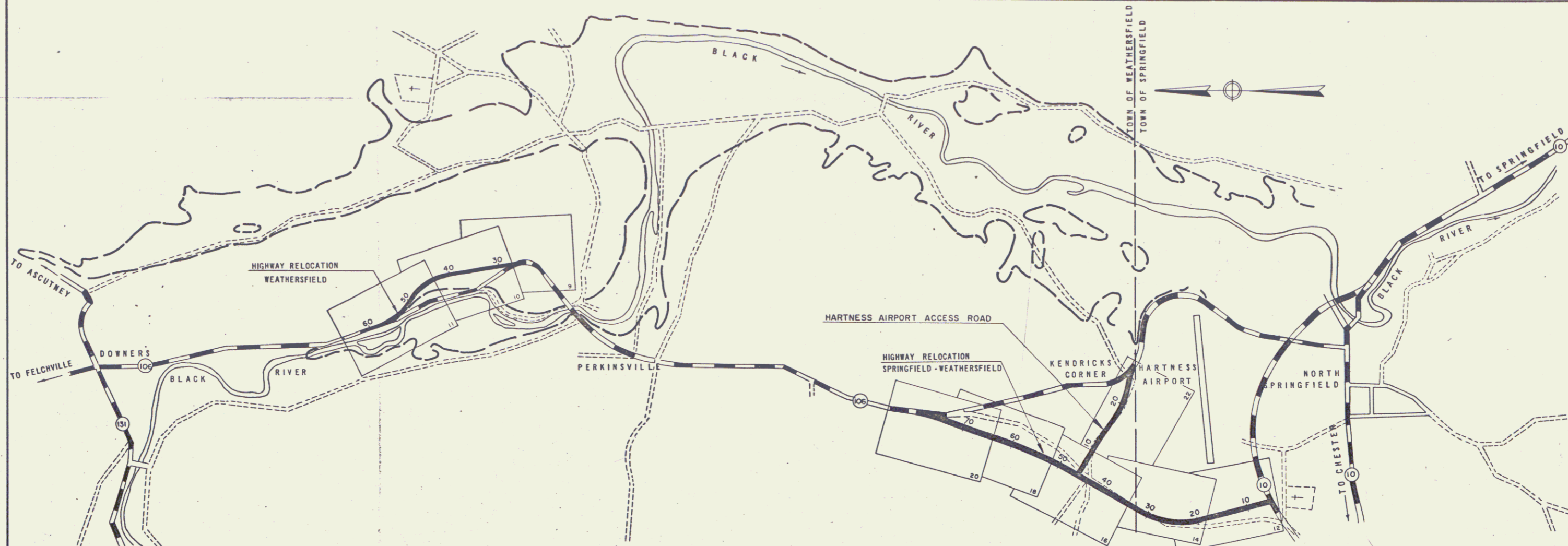


RIVERS DIVISION
 TOWN FILE
 PERPETUAL
 Town of VT 106
 (To Be Returned to R.O.W. Division)

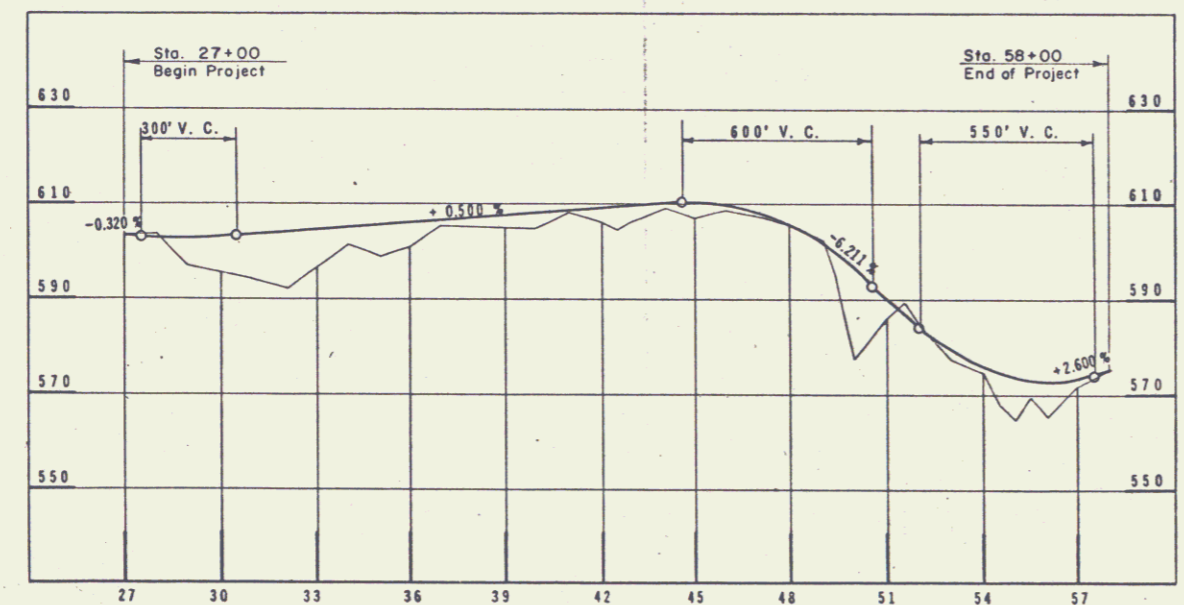
REVISION	DATE	DESCRIPTION	BY

DRAWN BY: J.D. CHECKED BY: J.D. CHECKED BY: E.C.A.G.R. APPROVED: [Signature] CHIEF ENGINEERING DIV.	CLARKESON ENGINEERING CO., INC. BOSTON, MASS.	CORPS OF ENGINEERS U.S. ARMY OFFICE OF THE DIVISION ENGINEER NEW ENGLAND DIVISION BOSTON, MASS.	VERMONT DATE: JULY 1958 SCALE: AS SHOWN SPEC. NO. 00000-06-59-5 DRAWING NUMBER: CT-1-4453 SHEET 1 OF 99
---	--	--	---

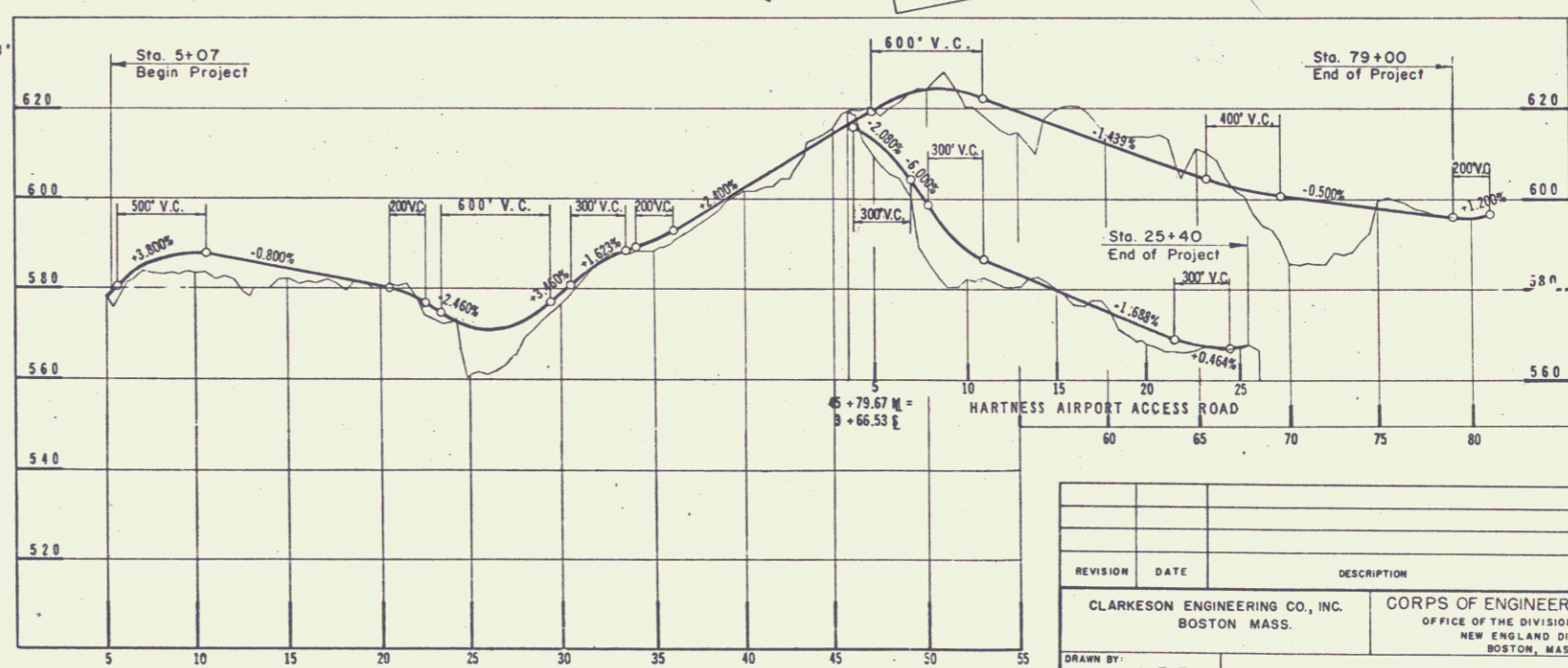
MP
 Weathersfield
 2.631-3.215
 Springfield
 3.216-3.798
 Weathersfield
 0.00-0.887



PLAN
SCALE: 1" = 1000'



ROUTE 106 RELOCATION, WEATHERSFIELD
SCALE: Hor. 1" = 300'
Vert. 1" = 20'



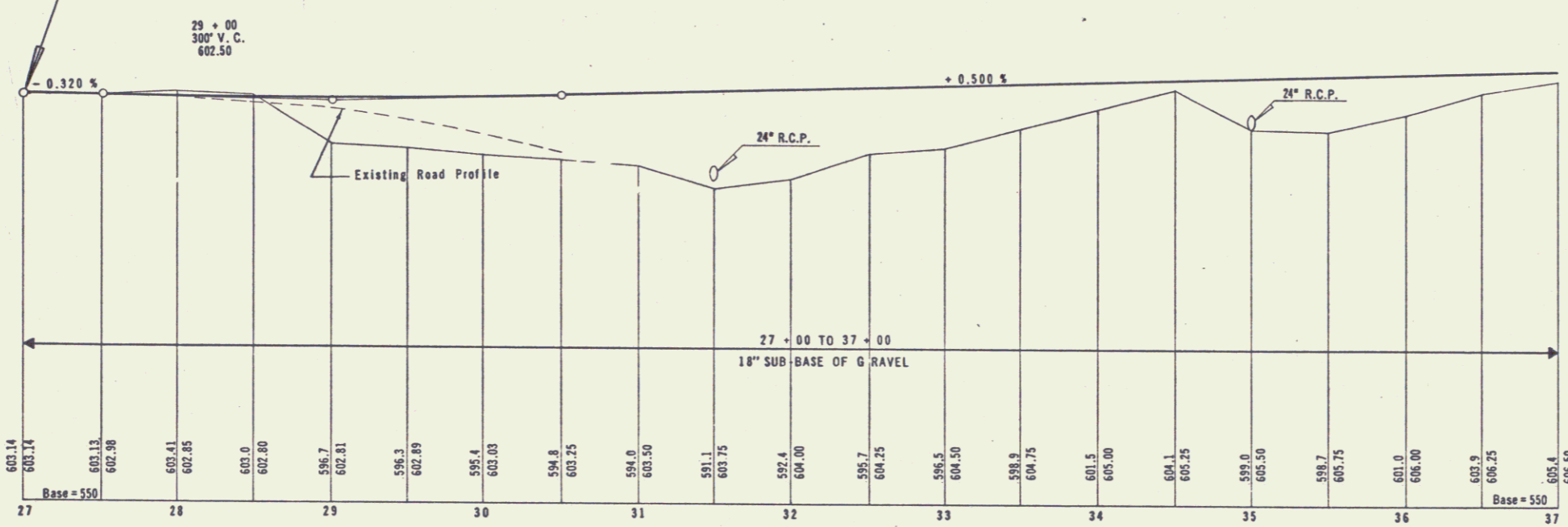
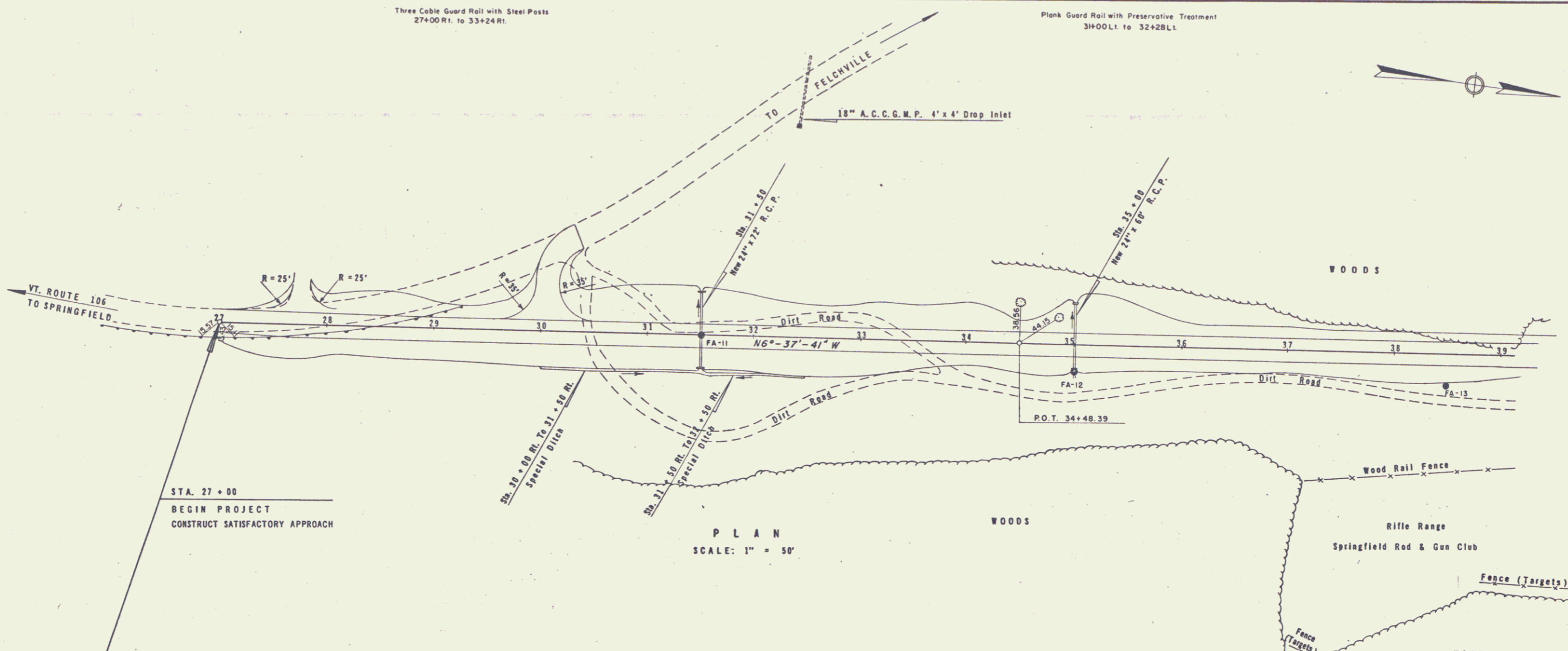
ROUTE 106 RELOCATION, SPRINGFIELD-WEATHERSFIELD
SCALE: Hor. 1" = 500'
Vert. 1" = 20'

REVISION	DATE	DESCRIPTION	BY

CLARKSON ENGINEERING CO., INC. BOSTON, MASS.	CORPS OF ENGINEERS U.S. ARMY OFFICE OF THE DIVISION ENGINEER NEW ENGLAND DIVISION BOSTON, MASS.
CONNECTICUT RIVER FLOOD CONTROL ROAD RELOCATIONS NORTH SPRINGFIELD DAM	
KEY PLAN AND PROFILES	
DRAWN BY: L.B.F.	BLACK RIVER VERMONT
TRACED BY: J.D.	DATE: JULY 1958
CHECKED BY: R.C.A., G.R., I.E.C.	APPROVED: [Signature]
APPROVED: [Signature]	APPROVED: [Signature]
CHIEF ENGINEERING DIV.	CHIEF ENGINEERING DIV.
SCALE: AS SHOWN	SPEC. NO. CIVENG-19-04-95-4
DRAWING NUMBER: CT-1-4454	SHEET 2 OF 99

CORPS OF ENGINEERS

U. S. ARMY



T. B. M. #1 Nail in Root
25' L.L. Sta. 30 + 80 + Elev. = 597.18

REVISION	DATE	DESCRIPTION	BY

CLARKSON ENGINEERING CO., INC. BOSTON MASS.	CORPS OF ENGINEERS U.S. ARMY OFFICE OF THE DIVISION ENGINEER NEW ENGLAND DIVISION BOSTON, MASS.
DRAWN BY: R.C.H.	CONNECTICUT RIVER FLOOD CONTROL ROAD RELOCATIONS NORTH SPRINGFIELD DAM
CHECKED BY: F.I.	ROUTE 106 RELOCATION-WEATHERSFIELD PLAN, PROFILE, GRADING AND DRAINAGE
APPROVED BY: H.C.A., G.R., I.E.C.	STA. 27 + 00 TO STA. 37 + 00
APPROVED BY: [Signature]	BLACK RIVER VERMONT
APPROVED BY: [Signature]	DATE: JULY 1 1959
CHIEF ENGINEERING DIV. 2	SCALE: AS SHOWN SPEC. NO. G.I.V.E.N. 9-08-99-3
	DRAWING NUMBER: CT-1-4461
	SHEET 9 OF 99

CORPS OF ENGINEERS

U. S. ARMY

Demolition and Removal of Buildings
Sta. 39 + 90 Rt.
Sta. 41 + 70 LL.

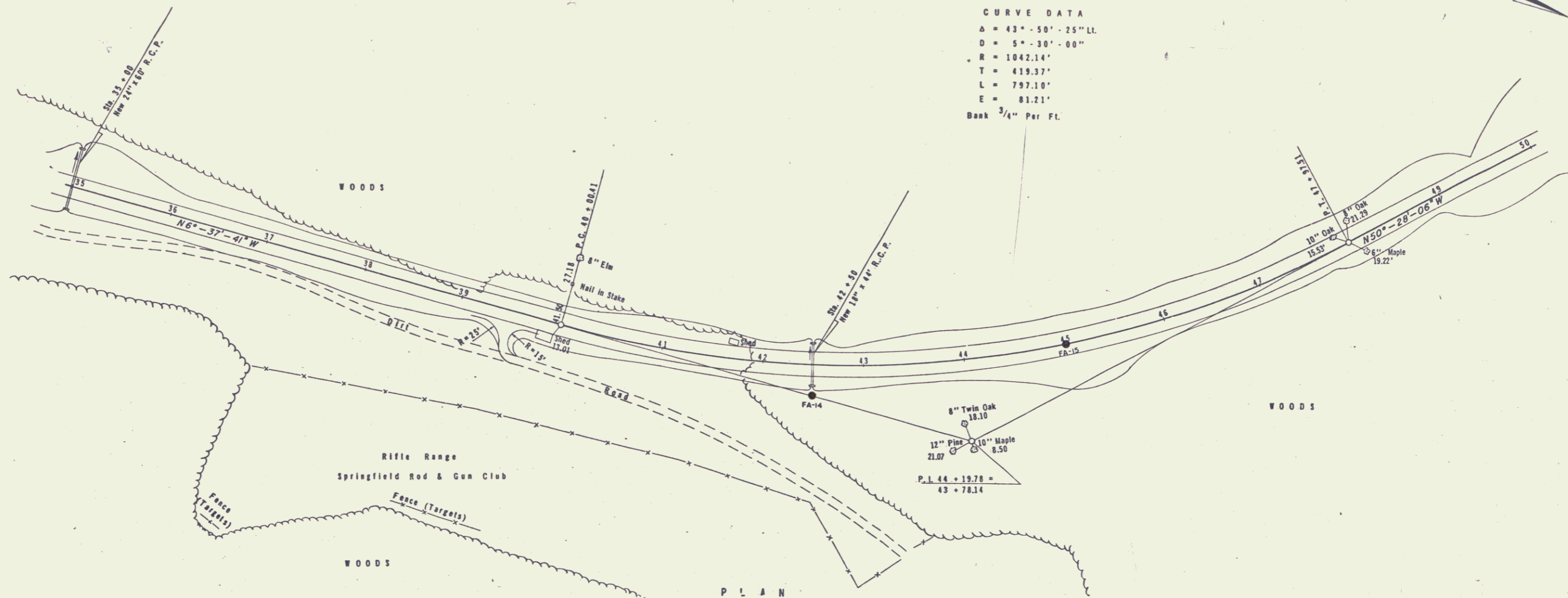
Three Cable Guard Rail with Steel Posts
49+06 Rt. to 51+30 Rt.
49+55 Lt. to 57+55 Lt.

Plank Guard Rail with Preservative Treatment
44+25 Rt. to 45+85 Rt.

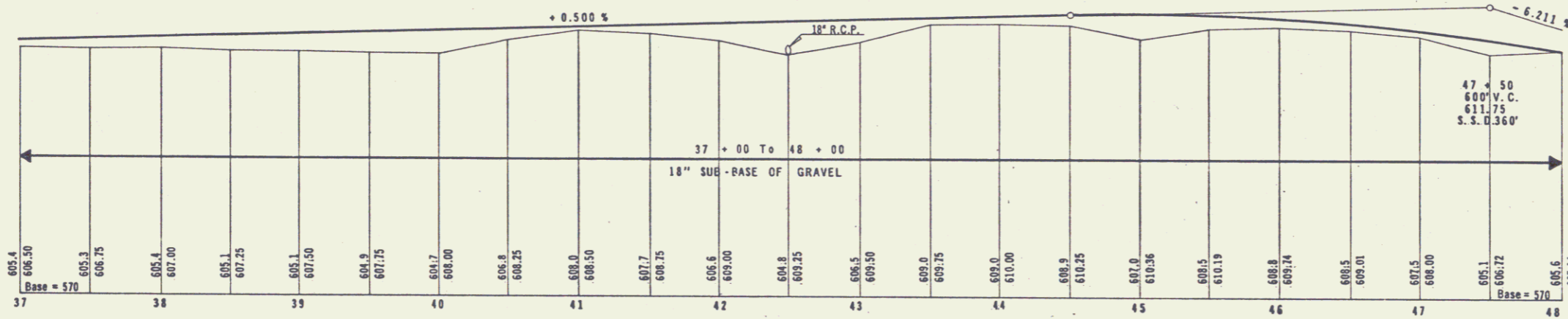
TO SPRINGFIELD

TO FELCHVILLE

CURVE DATA
Δ = 43° - 50' - 25" LL.
D = 5° - 30' - 00"
R = 1042.14'
T = 419.37'
L = 797.10'
E = 81.21'
Bank 3/4" Per Ft.



PLAN
SCALE: 1" = 50'



PROFILE
SCALE
Vert: 1" = 10'
Hor: 1" = 50'

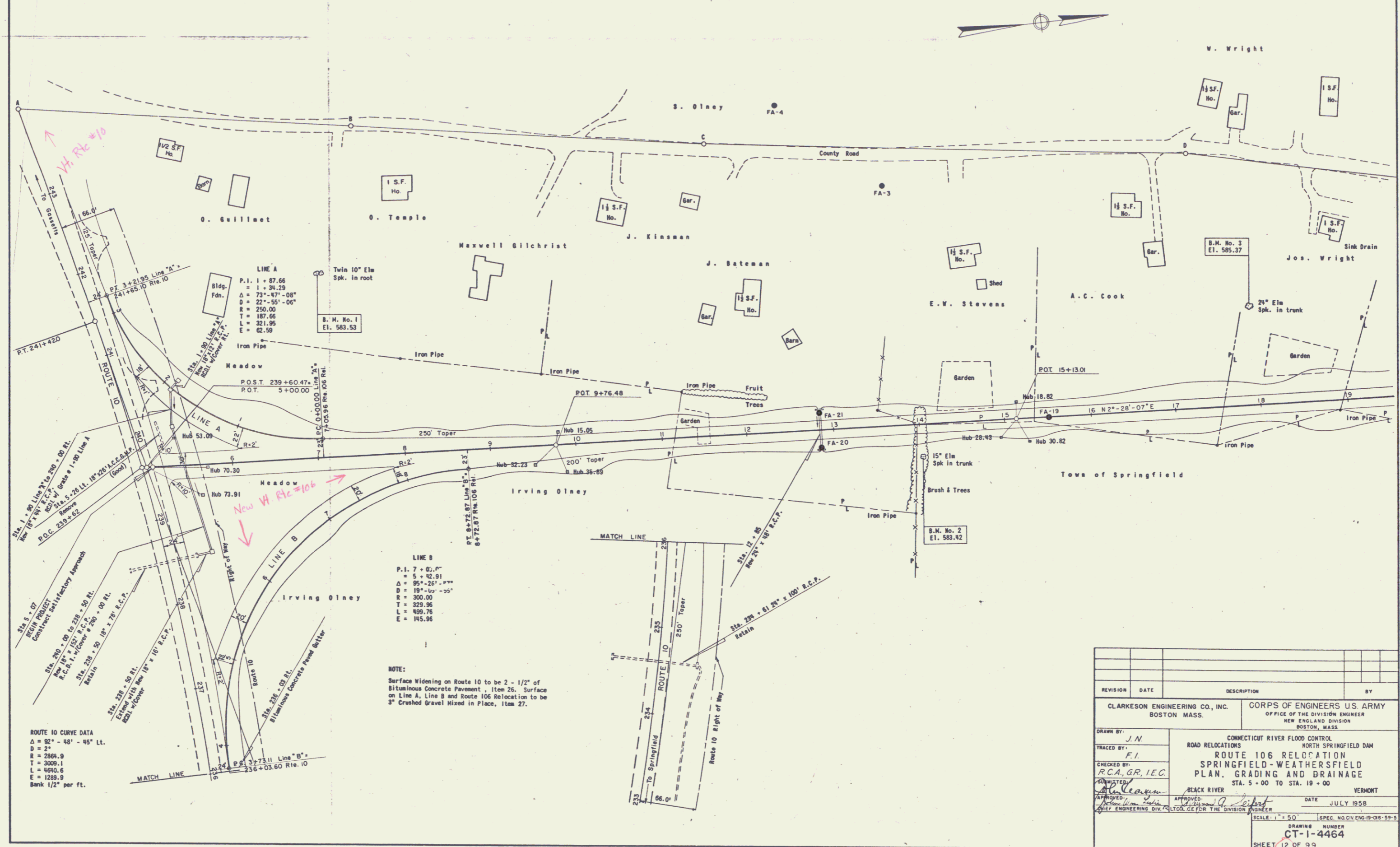
T. B. M. #2 R. R. Spike in Root of Stump
12' Ahead of P.I. 44 + 19.78 Elev. = 608.59

REVISION	DATE	DESCRIPTION	BY

CLARKESON ENGINEERING CO., INC. BOSTON, MASS.	CORPS OF ENGINEERS U.S. ARMY OFFICE OF THE DIVISION ENGINEER NEW ENGLAND DIVISION BOSTON, MASS.
DRAWN BY: R.C.H.	CONNECTICUT RIVER FLOOD CONTROL ROAD RELOCATIONS NORTH SPRINGFIELD DAM
TRACED BY: F.I.	ROUTE 106 RELOCATION-WEATHERSFIELD PLAN, PROFILE, GRADING AND DRAINAGE
CHECKED BY: R.C.A., G.R., I.E.C.	STA. 37 + 00 TO STA. 48 + 00
APPROVED BY: <i>[Signature]</i>	BLACK RIVER
APPROVED BY: <i>[Signature]</i>	DATE: JULY 1958
APPROVED BY: <i>[Signature]</i>	VERMONT
APPROVED BY: <i>[Signature]</i>	SCALE: AS SHOWN SPEC. NO. GIVING 19-06-93-5
	DRAWING NUMBER CT-1-4462
	SHEET TO OF 99

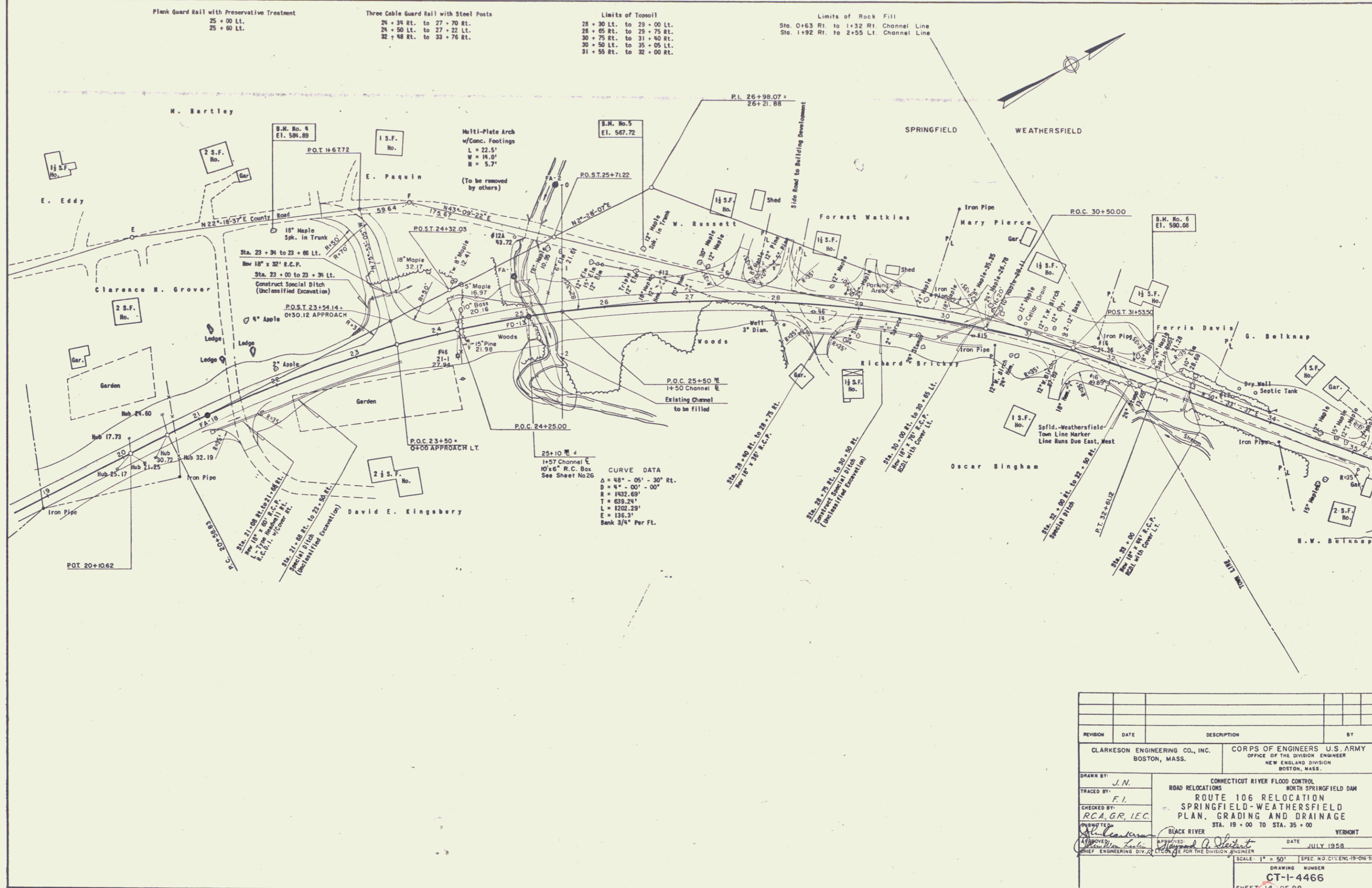
GRANITE SLOPE EDGING
Sta. 0+00 to Sta. 3+21.95 LINE A
Sta. 3+73.11 to Sta. 8+72.87 LINE B

BITUMINOUS CONCRETE PAVEMENT
Sta. 233+54 to Sta. 242+85 ROUTE 10



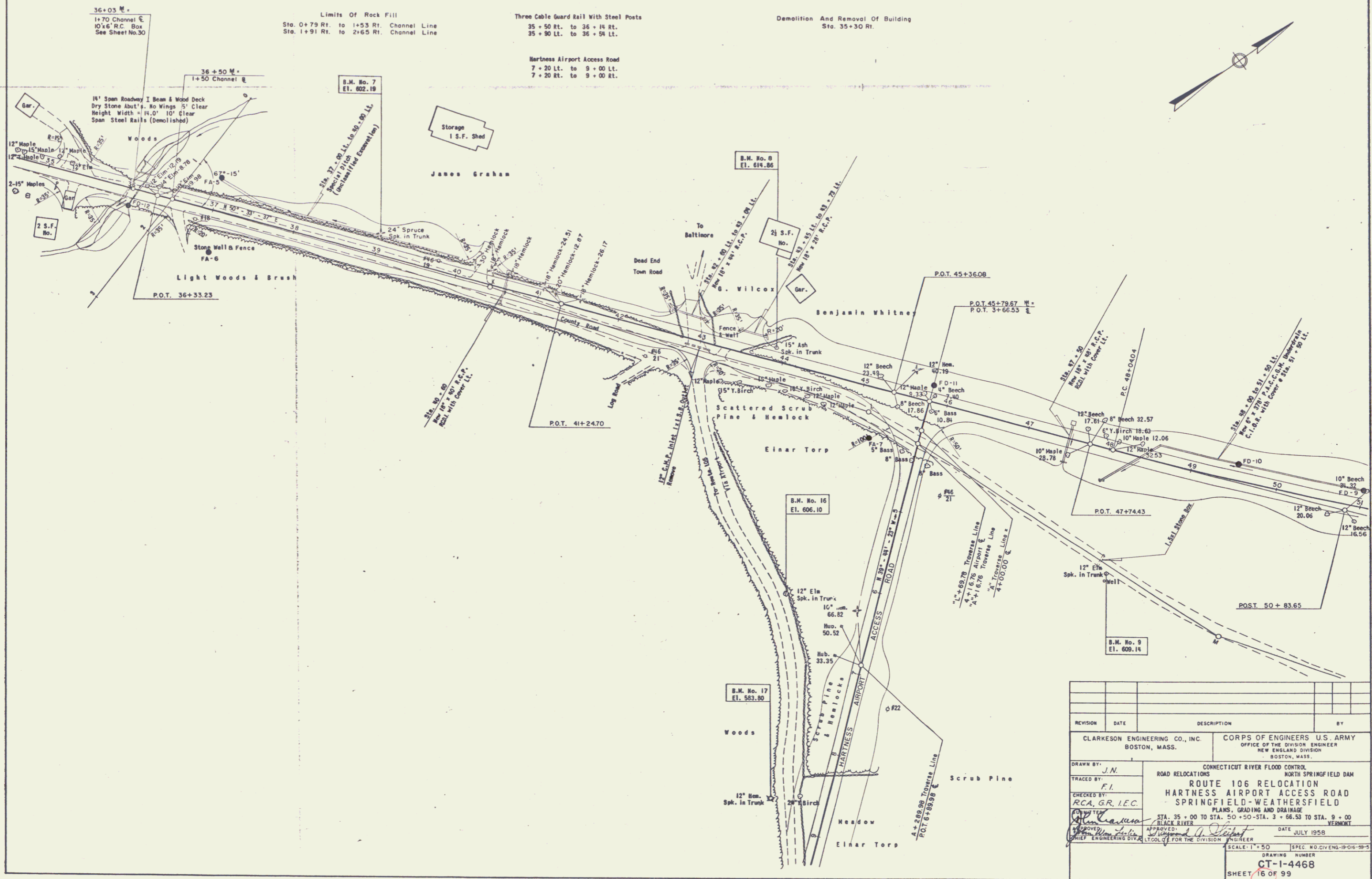
REVISION	DATE	DESCRIPTION	BY

CLARKESON ENGINEERING CO., INC. BOSTON MASS.	CORPS OF ENGINEERS U.S. ARMY OFFICE OF THE DIVISION ENGINEER NEW ENGLAND DIVISION BOSTON, MASS.
DRAWN BY: J.N. CHECKED BY: R.C.A., G.R., I.E.G. APPROVED: [Signature] DATE: JULY 1958	
CONNECTICUT RIVER FLOOD CONTROL NORTH SPRINGFIELD DAM ROUTE 106 RELOCATION SPRINGFIELD-WEATHERSFIELD PLAN, GRADING AND DRAINAGE STA. 5+00 TO STA. 19+00 VERMONT SCALE: 1" = 50' SHEET 12 OF 99	



REVISION	DATE	DESCRIPTION	BY

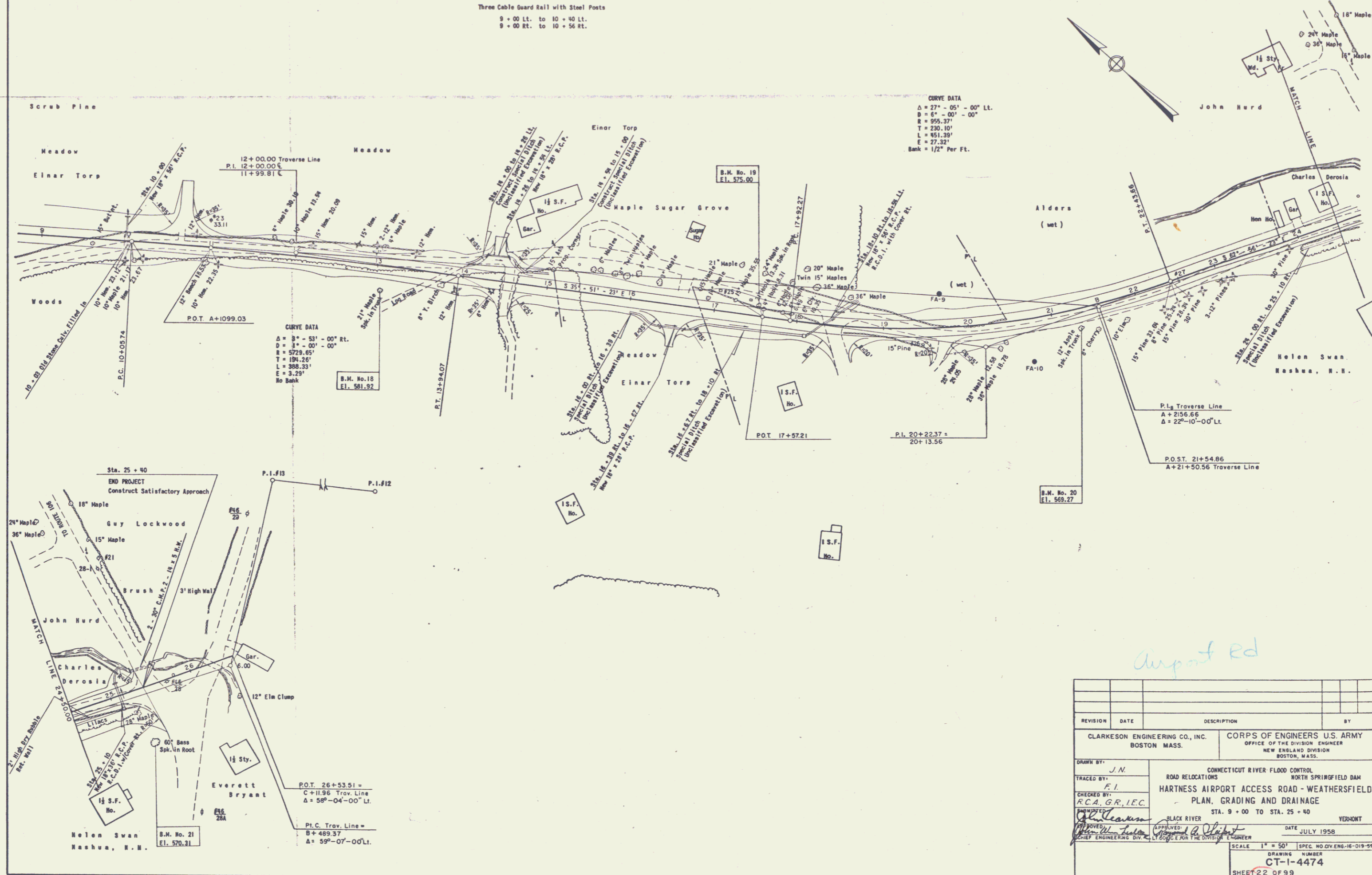
CLARKESON ENGINEERING CO., INC. BOSTON, MASS.	CORPS OF ENGINEERS U.S. ARMY OFFICE OF THE DIVISION ENGINEER NEW ENGLAND DIVISION BOSTON, MASS.
DRAWN BY: <i>J.N.</i>	CONNECTICUT RIVER FLOOD CONTROL ROAD RELOCATIONS NORTH SPRINGFIELD DAM
TRACED BY: <i>F.I.</i>	ROUTE 106 RELOCATION SPRINGFIELD-WEATHERSFIELD PLAN, GRADING AND DRAINAGE
CHECKED BY: <i>RCA, GR, IEC</i>	STA. 19 + 00 TO STA. 35 + 00
DESIGNED BY: <i>[Signature]</i>	BLACK RIVER
APPROVED BY: <i>[Signature]</i>	DATE JULY 1958
CHIEF ENGINEERING DIV.	SCALE: 1" = 50' SPEC. NO. CIV. ENG. 19-204-58'S
DRAWING NUMBER CT-1-4466	
SHEET 14 OF 99	



REVISION	DATE	DESCRIPTION	BY

CLARKSON ENGINEERING CO., INC. BOSTON, MASS.	CORPS OF ENGINEERS U.S. ARMY OFFICE OF THE DIVISION ENGINEER NEW ENGLAND DIVISION BOSTON, MASS.
CONNECTICUT RIVER FLOOD CONTROL	
ROAD RELOCATIONS NORTH SPRINGFIELD DAM	
ROUTE 106 RELOCATION	
HARTNESS AIRPORT ACCESS ROAD	
SPRINGFIELD - WEATHERSFIELD	
PLANS, GRADING AND DRAINAGE	
DATE: JULY 1958	SCALE: 1" = 50'
STATIONING: STA. 35+00 TO STA. 50+50 - STA. 3+66.53 TO STA. 9+00	DRAWING NUMBER: CT-1-4468
DATE: JULY 1958	SHEET: 16 OF 99

Three Cable Guard Rail with Steel Posts
9 - 00 Lt. to 10 + 40 Lt.
9 - 00 Rt. to 10 + 56 Rt.



CURVE DATA
 $\Delta = 27^\circ - 05' - 00''$ Lt.
 $D = 6' - 00' - 00''$
 $R = 955.37'$
 $T = 230.10'$
 $L = 451.25'$
 $E = 27.32'$
 Bank = $1/2'$ Per Ft.

CURVE DATA
 $\Delta = 3^\circ - 53' - 00''$ Rt.
 $D = 3' - 00' - 00''$
 $R = 5729.65'$
 $T = 194.26'$
 $L = 389.33'$
 $E = 3.29'$
 No Bank

REVISION	DATE	DESCRIPTION	BY

CLARKESON ENGINEERING CO., INC. BOSTON MASS.	CORPS OF ENGINEERS U.S. ARMY OFFICE OF THE DIVISION ENGINEER NEW ENGLAND DIVISION BOSTON, MASS.
DRAWN BY: J.N.	CONNECTICUT RIVER FLOOD CONTROL ROAD RELOCATIONS NORTH SPRINGFIELD DAM
TRACED BY: F.I.	HARTNESS AIRPORT ACCESS ROAD - WEATHERSFIELD PLAN, GRADING AND DRAINAGE
CHECKED BY: R.C.A. G.R., I.E.C.	BLACK RIVER VERMONT
APPROVED: <i>[Signature]</i> CHIEF ENGINEERS DIV.	DATE: JULY 1958
SCALE: 1" = 50'	SPEC. NO. DVEN-10-019-999
DRAWING NUMBER: CT-1-4474	SHEET 22 OF 99

airport rd

CORPS OF ENGINEERS

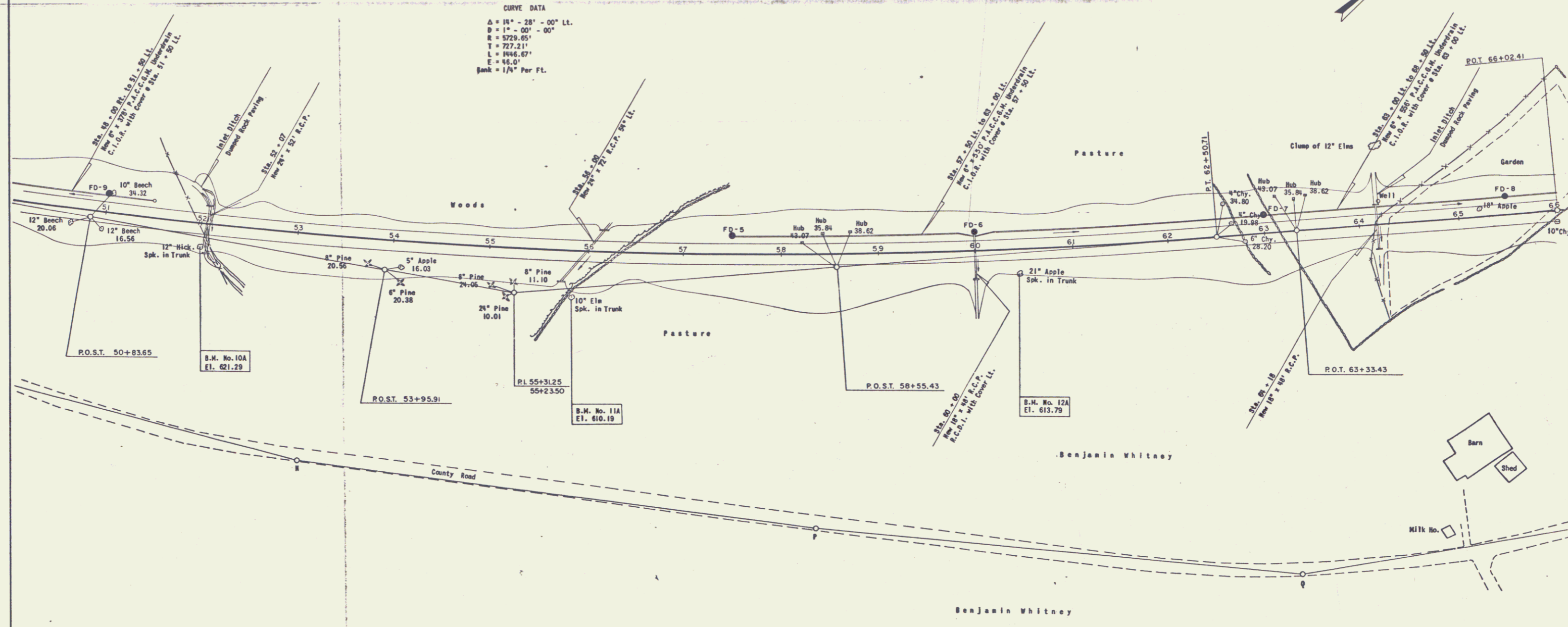
U.S. ARMY

Three Cable Guard Rail with Steel Posts
54 + 00 Rt. to 56 + 24 Rt.

3/4" Copper Tubing &
Sleeve for Water Pipe
Sta. 64 + 18
(Approximate Station and
actual Locations will be
determined in the field.)

CURVE DATA

$\Delta = 15^\circ - 28' - 00''$ LT.
 $D = 1^\circ - 00' - 00''$
 $R = 3229.65'$
 $T = 727.21'$
 $L = 1946.67'$
 $E = 16.0'$
Bank = 1/4" Per Ft.



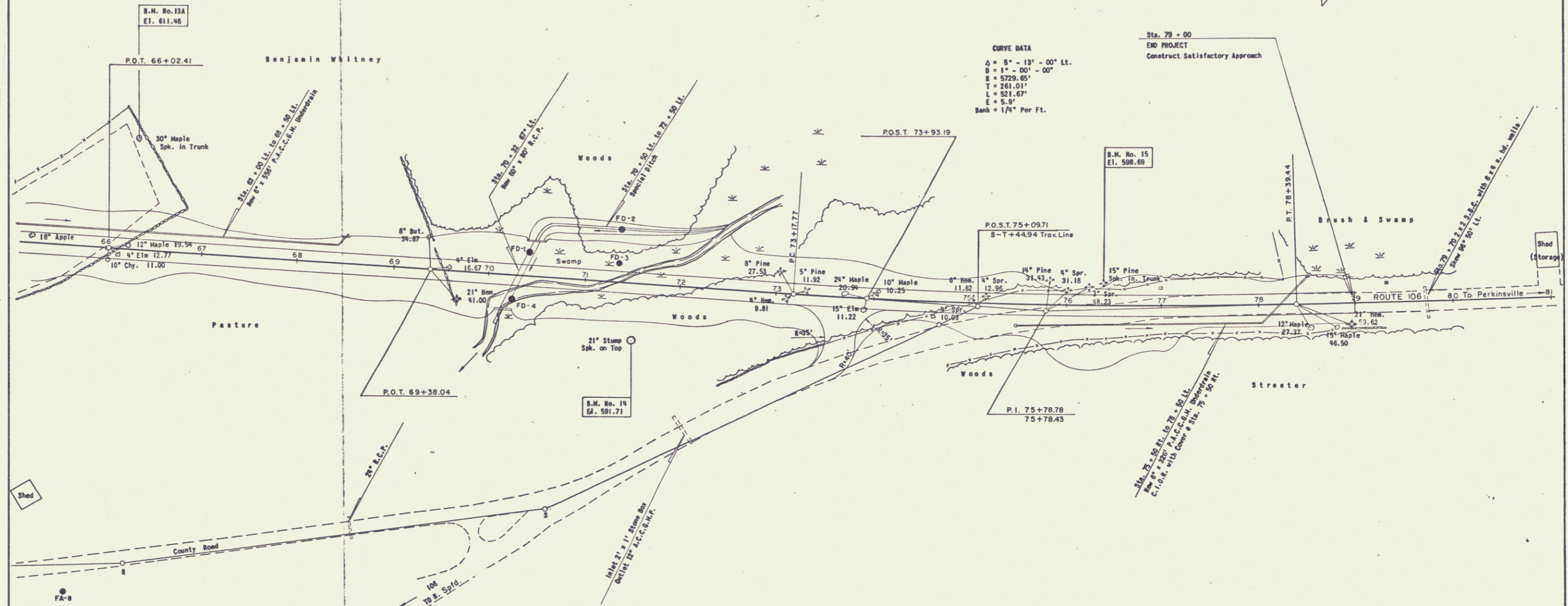
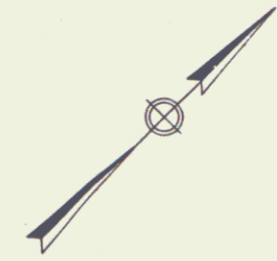
REVISION	DATE	DESCRIPTION	BY

CLARKESON ENGINEERING CO., INC. BOSTON MASS.	CORPS OF ENGINEERS U.S. ARMY OFFICE OF THE DIVISION ENGINEER NEW ENGLAND DIVISION BOSTON MASS.
DRAWN BY: J.N.	CONNECTICUT RIVER FLOOD CONTROL
TRACED BY: F.I.	ROAD RELOCATIONS
CHECKED BY: R.C.A. G.R.I.E.C.	NORTH SPRINGFIELD DAM
APPROVED BY: <i>[Signature]</i>	ROUTE 106 RELOCATION
APPROVED BY: <i>[Signature]</i>	SPRINGFIELD - WEATHERSFIELD
	PLAN, GRADING AND DRAINAGE
	STA. 50 + 50 TO STA. 66 + 00
	VERMONT
	DATE: JULY 1958
	SCALE: 1" = 50'
	DRAWING NUMBER: CT-1-4470
	SHEET 18 OF 99

10

Three Cable Guard Rail with Steel Posts
66 + 28 Rt. to 73 + 40 Rt.
68 + 28 Lt. to 74 + 20 Lt.
76 + 00 Lt. to 79 + 00 Lt.

Plank Guard Rail with Preservative Treatment
74 + 00 Rt.



CURVE DATA
Δ = 5° - 13' - 00" Lt.
R = 1" - 00' - 00"
E = 5729.85'
T = 261.01'
L = 521.67'
E = 5.8'
Bank = 1/4" Per Ft.

Sta. 79 + 00
END PROJECT
Construct Satisfactory Approach

REVISION	DATE	DESCRIPTION	BY

CLARKESON ENGINEERING CO., INC. BOSTON MASS.	CORPS OF ENGINEERS U.S. ARMY OFFICE OF THE DIVISION ENGINEER NEW ENGLAND DIVISION BOSTON, MASS.
DRAWN BY: J.N.	ROAD RELOCATIONS CONNECTICUT RIVER FLOOD CONTROL NORTH SPRINGFIELD DAM
TRACED BY: F.I.	ROUTE 106 RELOCATION SPRINGFIELD-WEATHERSFIELD PLAN, GRADING AND DRAINAGE
CHECKED BY: R.C.A., G.R., I.E.C.	STA. 66 + 00 TO STA. 79 + 00
DATE: JULY 1958	VERMONT
SCALE: 1" = 50'	SPEC. NO. CIVENG-19-08-195
DRAWING NUMBER CT-1-4472	SHEET 20DF99