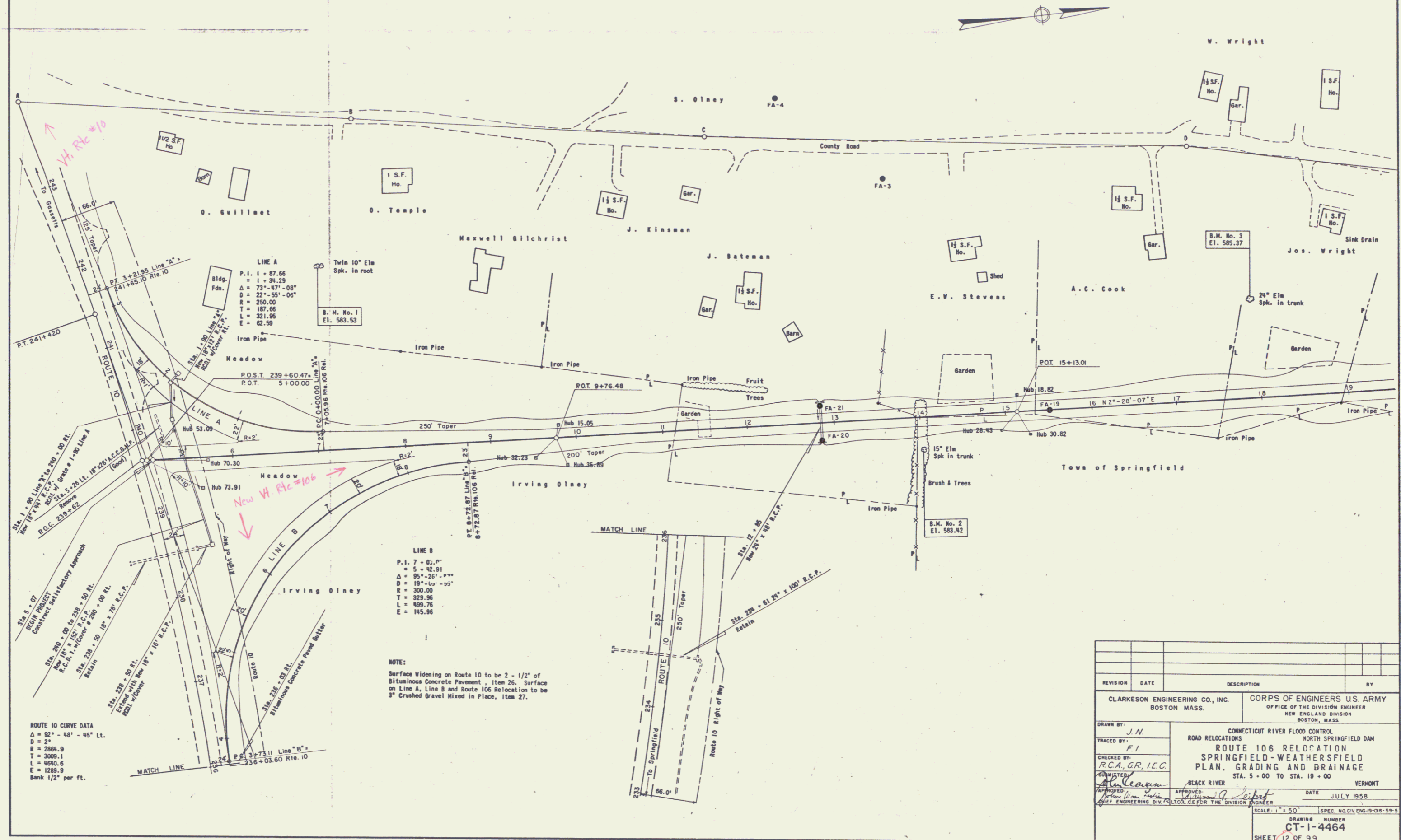


GRANITE SLOPE EDGING
Sta. 0+00 to Sta. 3+21.95 LINE A
Sta. 3+73.11 to Sta. 8+72.87 LINE B

BITUMINOUS CONCRETE PAVEMENT
Sta. 233+54 to Sta. 242+85 ROUTE 10



ROUTE 10 CURVE DATA
 $\Delta = 92^\circ - 48' - 45''$ LL.
 $D = 210'$
 $R = 2864.9$
 $T = 3009.1$
 $L = 6490.6$
 $E = 1289.9$
 Bank $1/2''$ per ft.

LINE B
 $P.I. 7 + 82.81$
 $= 5 + 42.81$
 $\Delta = 95^\circ - 26' - 57''$
 $D = 191' - 00'' - 05''$
 $R = 3000.00$
 $T = 323.96$
 $L = 469.76$
 $E = 145.96$

NOTE:
 Surface Widening on Route 10 to be $2 - 1/2''$ of Bituminous Concrete Pavement, Item 26. Surface on Line A, Line B and Route 106 Relocation to be $3''$ Crushed Gravel Mixed in Place, Item 27.

REVISION	DATE	DESCRIPTION	BY

CLARKESON ENGINEERING CO., INC. BOSTON MASS.	CORPS OF ENGINEERS U.S. ARMY OFFICE OF THE DIVISION ENGINEER NEW ENGLAND DIVISION BOSTON, MASS.
DRAWN BY: J.N. TRACED BY: F.I. CHECKED BY: R.C.A., G.R., I.E.G. APPROVED: [Signature] DATE: JULY 1958	
CONNECTICUT RIVER FLOOD CONTROL NORTH SPRINGFIELD DAM ROUTE 106 RELOCATION SPRINGFIELD-WEATHERSFIELD PLAN, GRADING AND DRAINAGE STA. 5+00 TO STA. 19+00 VERMONT SCALE: 1" = 50' SHEET 12 OF 99	