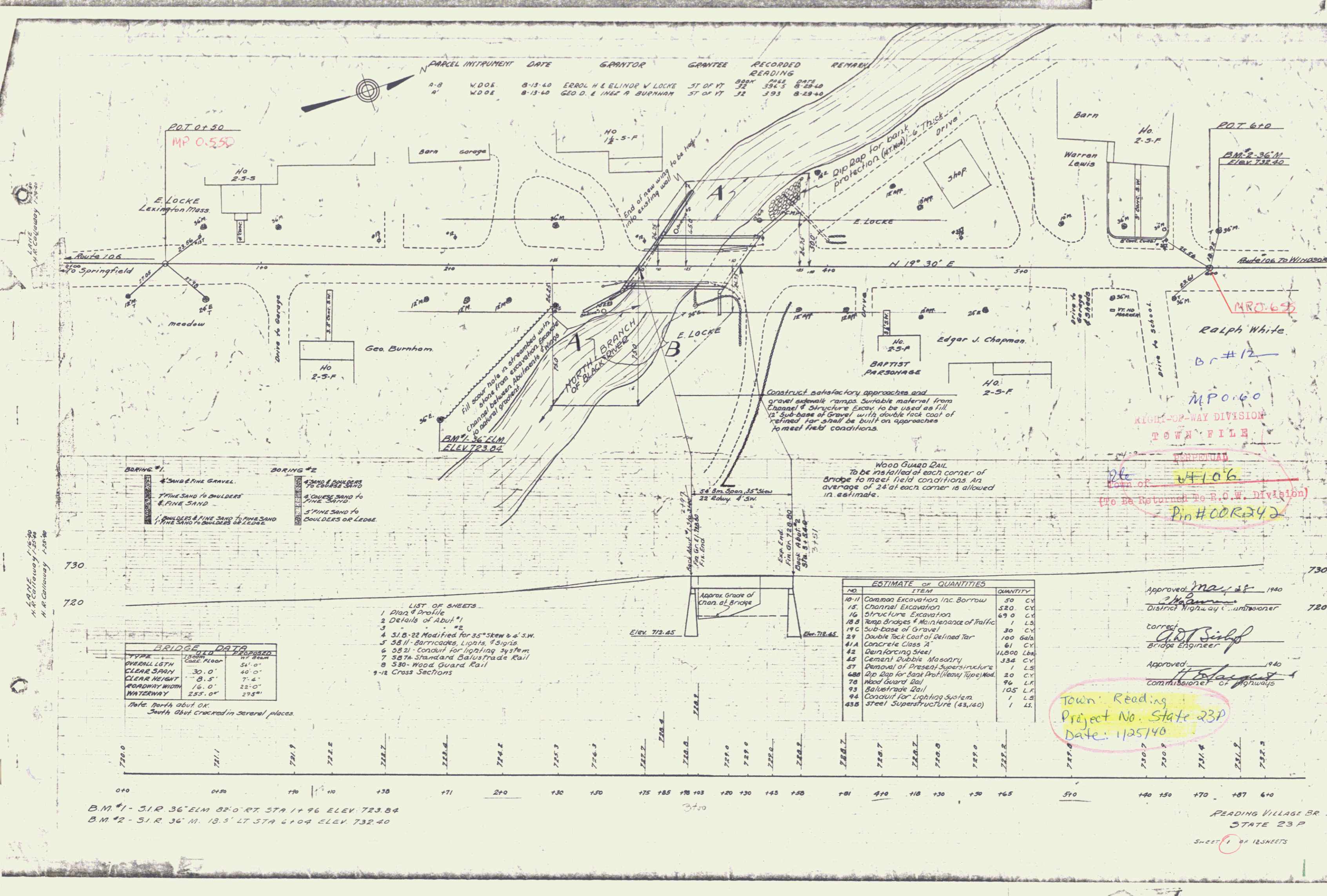


PARCEL INSTRUMENT	DATE	GRANTOR	GRANTEE	RECORDED READING	REMARK
A-8	W.D.O.E.	8-13-40	ERROL H. & ELINDA V. LOCKE	ST OF VT 32	8-28-40
A'	W.D.O.E.	8-13-40	GEO. D. & INEZ A. BURNHAM	ST OF VT 32	8-29-40



- BORING #1**
- 4' SAND & FINE GRAVEL
 - 7' FINE SAND TO BOULDERS & FINE SAND
 - 1' BOULDERS & FINE SAND TO FINE SAND
 - 1' FINE SAND TO BOULDERS OR LEDGE
- BORING #2**
- 4' SAND & BOULDERS TO COARSE SAND
 - 4' COARSE SAND TO FINE SAND
 - 5' FINE SAND TO BOULDERS OR LEDGE

- LIST OF SHEETS**
- 1 Plan & Profile
 - 2 Details of Abut #1
 - 3 " #2
 - 4 S.I.B.-22 Modified for 35' Stew & 6' S.W.
 - 5 S.B.II - Barricades, Lights, & Signs
 - 6 S.B.21 - Conduit for Lighting System
 - 7 S.B.7M - Standard Balustrade Rail
 - 8 S.B.0 - Wood Guard Rail
 - 9-12 Cross Sections

BRIDGE DATA

TYPE	ROAD	PROPOSED
OVERALL LGTH	30'-0"	51'-0"
CLEAR SPAN	30'-0"	40'-0"
CLEAR HEIGHT	8'-5"	7'-4"
ROADWAY WIDTH	16'-0"	22'-0"
WATERWAY	255'-0"	295'-0"

Note: Norths about OK. Souths about cracked in several places.

ESTIMATE OF QUANTITIES

NO.	ITEM	QUANTITY
10-11	Common Excavation, Inc. Borrow	30 CY
15	Channel Excavation	120 CY
16	Structure Excavation	69.0 CY
18.0	Temp Bridges & Maintenance of Traffic	1 LS.
19.0	Sub-base of Gravel	30 CY
29	Double Tack Coat of Refined Tar	100 Gal.
41A	Concrete Class A	61 CY
42	Reinforcing Steel	11,800 Lbs.
45	Cement Double Masonry	334 CY
57	Removal of Present Superstructure	1 LS.
68B	Dip Rap for Bank Prot. (Heavy Type) Mod.	20 CY
78	Wood Guard Rail	96 LF.
93	Balustrade Rail	105 LF.
94	Conduit for Lighting System	1 LS.
43B	Steel Superstructure (43,140)	1 LS.

Approved: *[Signature]* 1940
 District Highway Commissioner

Corrected: *[Signature]*
 Bridge Engineer

Approved: *[Signature]* 1940
 Commissioner of Highways

Town Reading
 Project No. State 23P
 Date: 1/25/40

B.M. #1 - S1R 36' ELM 82° 0' RT STA 1+96 ELEV 723.84
 B.M. #2 - S1R 36' N 19.3' LT STA 6+04 ELEV 732.40

READING VILLAGE BR
 STATE 23P
 SHEET 1 OF 12 SHEETS