

INDEX OF SHEETS

1. Title Sheet
2. Typical Sections
3. Drainage and Item Quantity Sheet
4. Earthwork and Earthwork Summary
- 5-6. R.O.W. Detail Sheets
- 7-8. Plan-Profile Sheets
9. B - 5 Typical Slope Grading 3/10/65 A
10. B - 10 Embankment on a Slope 3/10/65 A
11. B - 13 Drive Intersection 4/5/71 R
12. D - 2 Manholes 3/3/71 A
13. D - 6 R.C.D.I.'s w/Grates 12/2/66 A
14. D - 11 Type A Grates 12/2/69 R
15. E - 32 Road Construction Signs 5/6/71 R
16. E - 31 On-Project Construction Signs 5/6/71 R
17. G - 1 Std. Steel Beam Guard Rail w/ Steel Posts 4/28/70 R
18. J - 1 Project Markers - Boundary Markers 3/10/65 A
19. Blank
- 20-27. Cross Sections

RECORD PLANS MATERIALS PAVEMENT AREA 4,096 S.Y.

SUBBASE OF GRAVEL—DAVIS-BURKE PIT—WEATHERSFIELD, VT.  
 TACK COAT TYPE III—MOBIL OIL CO.—ALBANY, N.Y.  
 GRITS—VERMONT MARBLE—SHELBURNE, VT.  
 BITUMINOUS CONCRETE PAVEMENT—L.M. PIKE (PLANT 804)—W.LEBANON, N.H.  
 CONCRETE CLASS B—CHARLESTOWN READY MIX, INC.—CHARLESTOWN, N.H.  
 REINFORCING STEEL—TUCKER CONST. CORP.—LUDLOW, VT.  
 METAL CULVERT PIPE & STEEL BEAM GUARD RAIL—NORTHEASTERN CULVERT CORP.—WESTMINSTER, VT.  
 CAST IRON GRATES—E.L. LEBARON FOUNDRY CO.—BROCKTON, MA.  
 BOUNDARY & PROJECT MARKERS—HUME PIPE CO.—WINDSOR, VT.  
 EROSION CONTROL ITEMS—TUCKER CONST. CORP.—LUDLOW, VT.

CONTRACTOR  
 TUCKER CONSTRUCTION CORP.  
 LUDLOW, VT.  
 RES. ENG.—STEPHEN H. LANGILL.  
 RECORD PLANS—S. H. LANGILL.

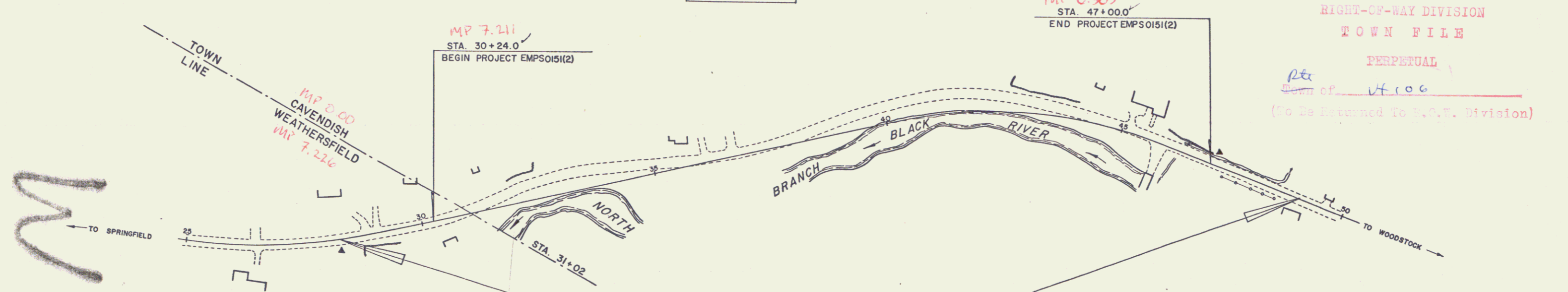
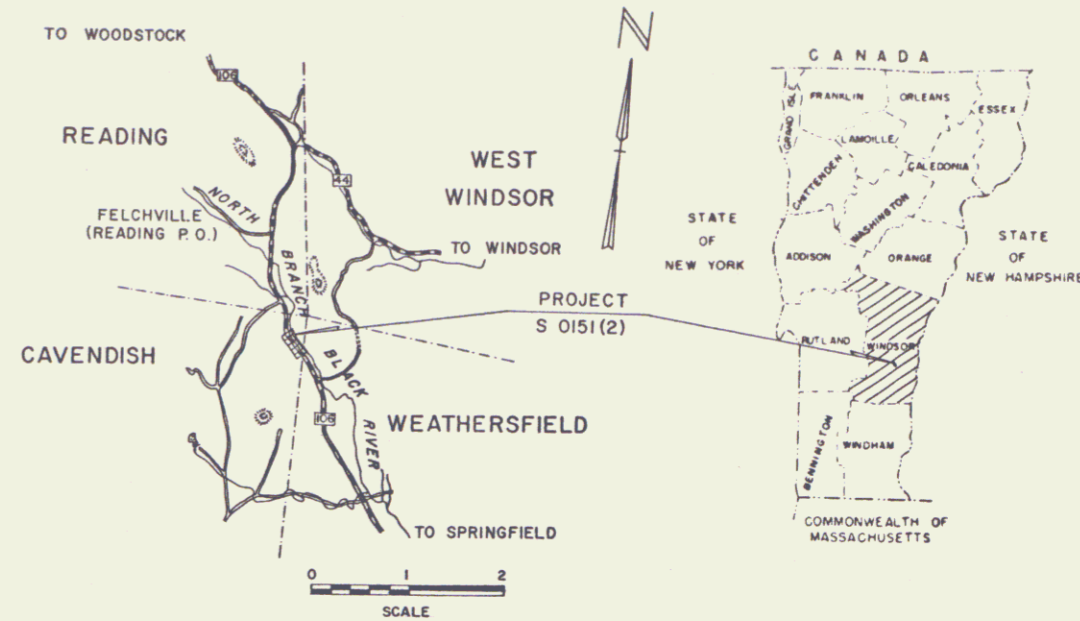
CONTRACT  
 DATED—JANUARY 3, 1972.  
 STARTED—APRIL 11, 1972.  
 COMPLETED—JULY 22, 1972.  
 ACCEPTED—JULY 22, 1972.

STATE OF VERMONT  
 DEPARTMENT OF HIGHWAYS  
**PROPOSED IMPROVEMENT**

**TOWNS OF WEATHERSFIELD - CAVENDISH**  
 COUNTY OF WINDSOR  
**VERMONT ROUTE 106**  
 SPRINGFIELD - WOODSTOCK ROAD

BEGINNING 78 FEET SOUTH OF THE WEATHERSFIELD - CAVENDISH TOWN LINE AND EXTENDING NORTHERLY 0.317 MILE.

1969 ADT	= 1290
1989 ADT	= 2250
1989 DHV	= 340
D	= 53%
T	= 5%
V	= 50 MPH



CONVENTIONAL SIGNS

POINT OF ACCESS	X
LIMITS OF ACCESS	—
COUNTY LINE	—
TOWN LINE	—
FENCE LINE	—
STONE WALL	—
UNFENCED PROPERTY	—
GUARD RAIL	—
TRAVELED WAY	—
RAILROAD	—
RETAINING WALL	—
CENTER LINE	—
SURVEY LINE	—
CULVERT	—
DROP INLET	—
TROLLEY POLE	—
POWER POLE	—
TELEPHONE POLE	—
TREES	—
HEDGE	—
F.A. CONSTRUCTION IDENTIFICATION SIGNS	—

FOR RIGHT OF WAY DETAILS, SEE RIGHT OF WAY PLANS FOR THIS PROJECT.

CONSTRUCTION AREA  
 28+24 - 49+00



MP 0.303  
 STA. 47+00.0  
 END PROJECT EMP S 0151(2)

RIGHT-OF-WAY DIVISION  
 TOWN FILE  
 PERPETUAL  
 (To Be Returned To R.O.W. Division)

Pin # 00R240

NOTE: ANY FURTHER INFORMATION CONCERNING FINAL QUANTITIES, AMOUNTS OR OTHER DETAILS RELATIVE TO THIS PROJECT MAY BE FOUND IN EITHER THE FIELD BOOKS OR THE ESTIMATE FILE.

THESE PLANS ARE SUBJECT TO SUCH REVISIONS AS MAY BE REQUIRED BY THE FEDERAL HIGHWAY ADMINISTRATION OR THE CHIEF ENGINEER.  
 CONSTRUCTION IS TO BE CARRIED ON IN ACCORDANCE WITH THESE PLANS AND THE STANDARD SPECIFICATIONS FOR HIGHWAY AND BRIDGE CONSTRUCTION DATED APRIL, 1964, AS APPROVED BY THE BUREAU OF PUBLIC ROADS ON OCTOBER 12, 1964, INCLUDING ALL SUBSEQUENT APPROVED REVISIONS AND SUCH REVISED SPECIFICATIONS AND SPECIAL PROVISIONS AS ARE INCORPORATED IN THESE PLANS.

DEPARTMENT OF TRANSPORTATION FEDERAL HIGHWAY ADMINISTRATION	
APPROVED	DATE
DIVISION ENGINEER	DATE
PROJECT EMP S NO. 0151(2)	
SHEET 1 OF SHEETS 27	

APPROVED *R.H. Arnold*  
 CHIEF ENGINEER  
 DATE 5/4/70  
 SUBMITTED BY ORDER OF THE STATE HIGHWAY BOARD

STATE OF VERMONT  
DEPARTMENT OF HIGHWAYS  
RIGHT-OF-WAY PLANS  
DETAIL SHEET  
OF

TABLE OF PROJECT PROPERTY ACQUISITION

PARCEL NO.	GRANTOR	SHEET NO.	BEGINNING STATION	ENDING STATION	TAKING +	REM. +	RIGHTS	TITLE TAKEN	DATE	TOWN OR CITY RECORDED	BK.	PG.	REMARKS
1	TRUSTEES OF THE DIOCESE OF VT. (LESSOR) CASS, HARLAND A. & JOAN W. (LESSEE)	5	30+65 RT. 29+50 RT. 30+40 RT. 31+50 RT.	31+40 RT. 31+60 RT.	92.4 S.F.	1.98 A	SLOPE 1089 S.F.± (T) DRIVE (T) DRAINAGE (P)			WEATHERSFIELD			
2	CASS, HARLAND A. & JOAN W.	5	31+18 RT. 31+74 RT.	32+46 LT.	0.1 A	NONE	R.T. & I. SPRING (P)			CAVENDISH			
3A	GOULD, BESSIE	5	28+82 LT. 29+30 LT. 29+05 LT.	30+72 LT. 30+60 LT.	1840 S.F.		R.T. & I. SLOPE 650 S.F.± (P) DRIVE (T)			WEATHERSFIELD			
3B		5	30+63 LT. 28+86 LT. 30+60 LT. 31+91 LT.	31+06 LT. 32+64 LT. 31+35 LT.	120 S.F.	1.05A	SLOPE 200 S.F.± (P) DRIVE (T)			CAVENDISH			
4A	COLLINS, MAY BURDITT	5	31+68 RT. 31+50 RT.	34+30 RT. 32+20 RT.	0.75 A	98.23A	CHANNEL (P)						
4B		7	36+67 RT. 37+12 RT. 37+00 RT. 38+00 RT. 46+00 RT. 41+25 RT. 42+38 RT. 44+90 RT. 44+94 RT. 45+84 RT.	46+60 RT. 46+00 RT. 44+50 RT. 46+60 RT.	1.0 A		SLOPE 9000 S.F.± (P) DRAINAGE (P) CHANNEL (P) CULVERT & DRAINAGE (P) DRAINAGE (P) DRAINAGE (P) DRAINAGE (P) DRAINAGE (P) DRIVE (T)						
4C		7	44+90 LT. 44+90 LT. 46+15 LT. 45+14 LT.	48+22 LT. 45+40 LT. 47+00 LT.	1175 S.F.		SLOPE 350 S.F.± (T) SLOPE 150 S.F.± (P) DRIVE (T)						

TABLE OF REVISIONS

REVISION NO.	SHEET NO.	DESCRIPTION OF REVISION	DATE	MADE BY	APPROVED BY
1	3,5	Parcel #1 Revised & Reduced Take. Showed (T) Slope At Sta. 29+50 - 31+60. Per Change Order # 1761	11-13-70	KNO	RG
2	5	ADDED DRIVE AT APP STA. 31+91 LT. PARCEL #3 PER C.O. #1810	2-23-71	W.E.B.	T.P.M.
3	5/7	Parcel #5 Added parcel 5B to plans as a non-participating parcel Per Change Order #1838	2-25-71	RS	T.P.M.

MADE BY: K.M.D. DATE 7-9-70  
CHECKED BY: M.L.B. DATE 7-9-70

PRESENT R.O.W.  
 - - - - - TAKING WITHOUT ACCESS  
 - - - - - TAKING WITHOUT ACCESS ALONG PROPERTY LINES  
 - - - - - TAKING WITH ACCESS  
 (P) PERMANENT EASEMENT  
 (T) TEMPORARY EASEMENT

LEGEND  
 SR - SR SLOPE RIGHTS  
 P - P PROPERTY LINE  
 Δ - Δ TOP OF CUT  
 O - O TOE OF SLOPE

APPROVED: John P. Howe CHIEF OF PLANS & TITLES DATE 7-9-70  
 APPROVED: E.M. Lane HIGHWAY ENGINEER DATE 7/9/70  
 APPROVED: J.R. [Signature] R.O.W. DIRECTOR DATE 7/9/70

PROJECT WEATHERSFIELD-CAVENDISH  
 NO. EMP 5 0131(2)  
 SHEET 6 OF 27

STATE OF VERMONT  
DEPARTMENT OF HIGHWAYS  
RIGHT-OF-WAY PLANS  
DETAIL SHEET  
OF

TABLE OF PROJECT PROPERTY ACQUISITION

PARCEL NO.	GRANTOR	SHEET NO.	BEGINNING STATION	ENDING STATION	TAKING +	REM. +	RIGHTS	TITLE TAKEN	DATE	TOWN OR CITY RECORDED	BY	PG.	REMARKS
5A	STONE, RICHARD A. & MARGARET B.	5,7	32 + 28 RT. 36 + 12 LT. 36 + 67 LT.	36 + 67 RT.	0.45A	1.7 A	DRIVE (T) DRIVE (T)						
5B		5,7	34 + 30 RT.	36 + 67 RT.	0.53A		NON-PARTICIPATING						
6	MARKWELL, GORDON D. & KATHERINE R.	7	36 + 67 LT.		N/A	N/A	DRIVE (T)						
7	PUGH, RICHARD F. & BERNETTA B.	7	46 + 60 RT. 48 + 21 LT.	47 + 25 RT. 48 + 70 LT.	N/A	N/A	SLOPE (P) 150S.F. SLOPE (P) 250S.F.						

TABLE OF REVISIONS

REVISION NO.	SHEET NO.	DESCRIPTION OF REVISION	DATE	MADE BY	APPROVED BY

MADE BY: K.M.D. DATE: 7-9-70  
CHECKED BY: M.L.B. DATE: 7-9-70

----- PRESENT R.O.W.  
--- TAKING WITHOUT ACCESS  
--- P L --- TAKING WITHOUT ACCESS ALONG PROPERTY LINES  
--- TAKING WITH ACCESS  
(P) PERMANENT EASEMENT  
(T) TEMPORARY EASEMENT

LEGEND  
--- SR --- SR --- SLOPE RIGHTS  
--- P L --- P L --- PROPERTY LINE  
--- Δ --- Δ --- Δ --- TOP OF CUT  
--- O --- O --- O --- TOE OF SLOPE

APPROVED: [Signature] DATE: 7-9-70  
CHIEF OF PLANS & TITLES  
APPROVED: [Signature] DATE: 7/9/70  
HIGHWAY ENGINEER  
APPROVED: [Signature] DATE: 7-9-70  
R.O.W. DIRECTOR

PROJECT WEATHERSFIELD-CAVENDISH  
NO. EMP 5 0151(2)  
SHEET 6 OF 27

STONE FILL FOR SLOPE PROTECTION (LIGHT TYPE)-ITEM 512  
31+25 RTV-34+75 RTV

UNCLASSIFIED CHANNEL EXCAVATION - ITEM 108C  
31+25 RTV-34+75 RTV

STANDARD STEEL BEAM GUARD RAIL W/STEEL FLOOR  
ITEM 545-A

EXCAV. & REMOVAL OF ROAD SURFACE  
AND/OR PAVEMENT  
32+00 LT. - 35+00 LT.

CONSTRUCT DRIVE  
20+00 LT. ✓  
29+05 LT. ✓  
29+10 RT ✓  
31+91 LT ✓  
30+75 RT ✓  
31+75 LT ✓  
35+02 LT ✓

CURVE DATA  
Δ 19°14' LT.  
D 3°  
R 1145.92'  
T 194.17'  
L 384.67'  
E. 16.33'

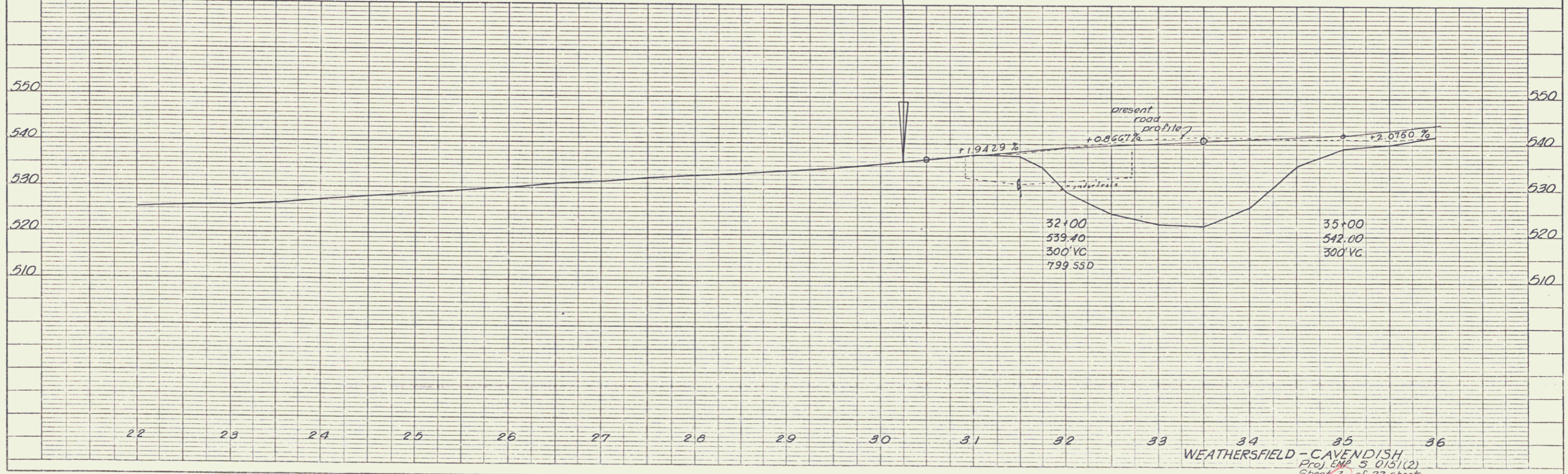
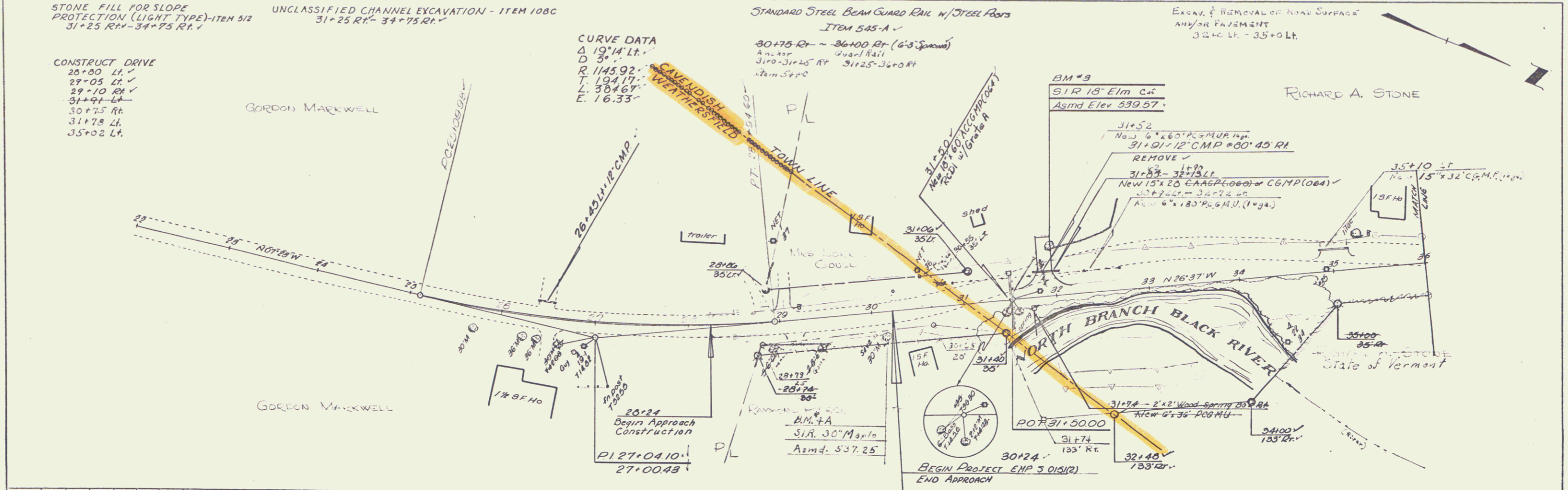
30+75 RT ~ 36+00 RT (6'S SPACING)  
Anchor Guard Rail  
310-3125 RT 3125-36+0 RT  
Item 545-C

BM #9  
SIR 18" Elm Cot  
Asmd Elev 539.57

RICHARD A. STONE

PLAN  
DATE: 11/20/03  
SCALE: 1"=40'  
PROJECT: WEATHERSFIELD - CAVENDISH  
SHEET: 7 OF 27

PROFILE  
DATE: 11/20/03  
SCALE: 1"=40'  
PROJECT: WEATHERSFIELD - CAVENDISH  
SHEET: 7 OF 27



K&E PLATE 1, PLAN PROFILE  
JENNIFER A. BISHOP CO.  
40 7312 IMPERIAL "TRAFFIC" GRADE 1/2" x 1/4"

WEATHERSFIELD - CAVENDISH  
Proj. EMP 5 0151(2)  
Sheet 7 of 27 sheets

4

PLAN  
 DRAWN BY: *W. J. WATSON*  
 CHECKED BY: *W. J. WATSON*  
 DATE: 4/5/57

PROFILE  
 DRAWN BY: *W. J. WATSON*  
 CHECKED BY: *W. J. WATSON*  
 DATE: 4/5/57

