

SOD REMOVAL
192+00 - 193+40 RT
194+29.03 - 190+00

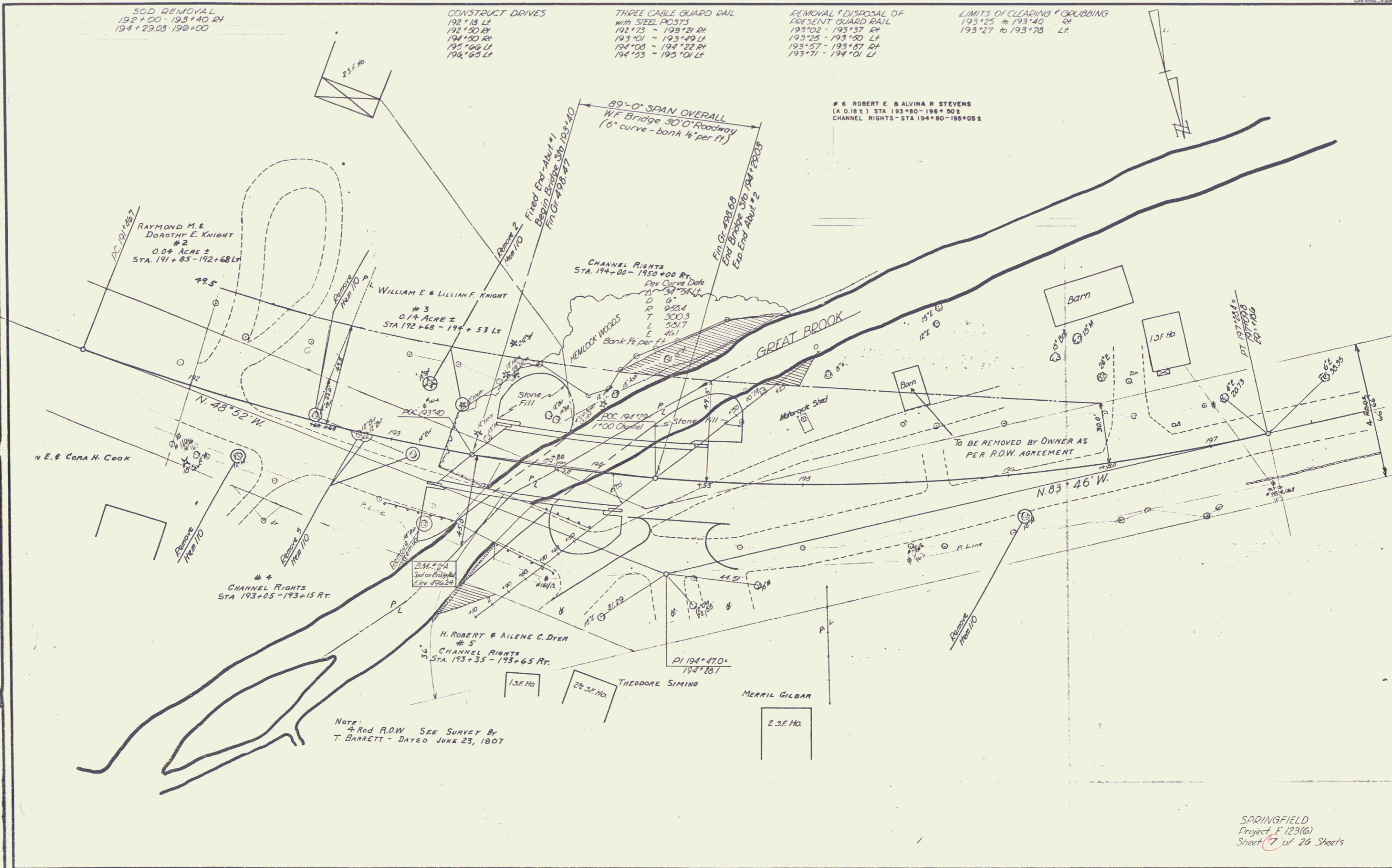
CONSTRUCT DRIVES
192+13 LT
192+50 RT
194+50 RT
195+66 LT
196+65 LT

THREE CABLE GUARD RAIL
WITH STEEL POSTS
192+73 - 193+21 RT
193+01 - 193+49 LT
194+03 - 194+22 RT
194+53 - 195+01 LT

REMOVAL & DISPOSAL OF
PRESENT GUARD RAIL
193+02 - 193+37 RT
193+25 - 193+50 LT
193+57 - 193+87 RT
193+71 - 194+01 LT

LIMITS OF CLEARING & GRUBBING
193+25 to 193+40 RT
193+27 to 193+70 LT

6 ROBERT E & ALVINA R STEVENS
(A 0.18 ±) STA 193+80 - 196+50
CHANNEL RIGHTS - STA 194+80 - 195+05 ±



NOTE:
* Rod P.O.W. SEE SURVEY BY
T. BARRETT - DATED JUNE 23, 1907

SPRINGFIELD
Project F 123(6)
Sheet 7 of 26 Sheets