

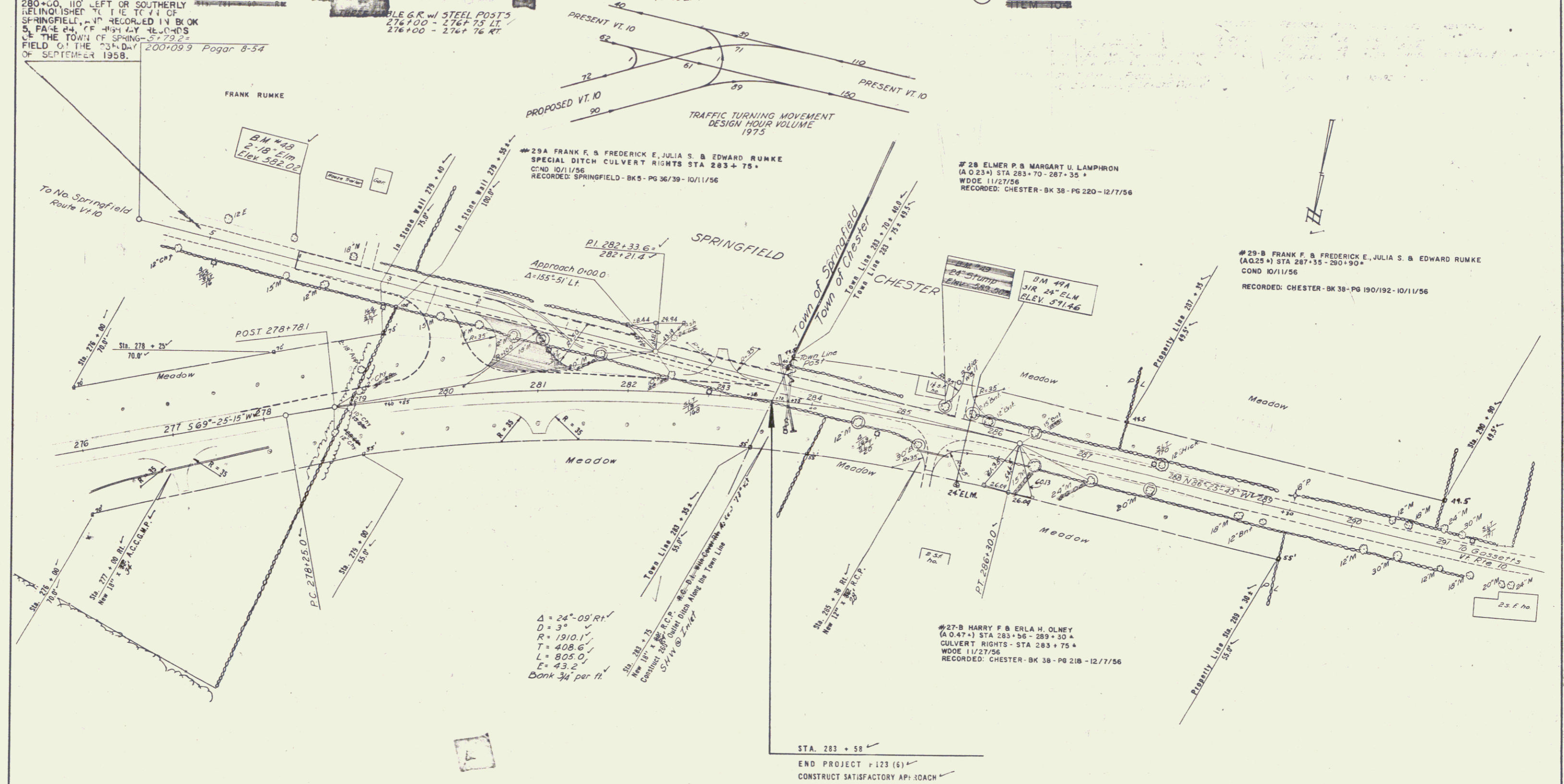
Construct Approach  
200+00 LT

CONTROL OF SECTION OF OLD  
HIGHWAY BETWEEN STA. 189+00,  
175 LEFT OR WESTERLY AND STA.  
280+00, 110 LEFT OR SOUTHERLY  
RELINQUISHED TO THE TOWN OF  
SPRINGFIELD, AND RECORDED IN BOOK  
5, PAGE 24, OF HIGHWAY RECORDS  
OF THE TOWN OF SPRINGFIELD  
FIELD OF THE 73rd DAY 2001099 Pagar 8-54  
OF SEPTEMBER 1958.

Construct Special Ditch Item 101  
276+00 RT - 279+25 RT  
276+00 LT - 271+35 LT

CONSTRUCT DRIVES  
MAIN LINE 277+00 RT  
281+00 RT  
285+42 RT  
285+60 LT  
APPROACH 3+25 RT

PUB. NO.	STATE	FED. AID PROJECT	FISCAL YEAR	SHEET NO.	TOTAL SHEETS
1	VT	127-8		24	136



$\Delta = 24^{\circ}09'RT$   
 $D = 3'$   
 $R = 1910.1'$   
 $T = 408.6'$   
 $L = 805.0'$   
 $E = 43.2'$   
 Bank 3/4' per ft.

STA. 283 + 58  
 END PROJECT + 123 (6)  
 CONSTRUCT SATISFACTORY APPROACH

**SHEET 24**  
 SPRINGFIELD  
 Project F No 123(6)  
 Sur by Pagar 8-54  
 Plot by 11-55  
 Traced by I.E.C. 12-55

THE CLARKSON ENGINEERING CO., INC.  
 CONSULTING ENGINEERS  
 BOSTON MASSACHUSETTS