

Construct Drive
 STA 244+00 TO STA 244+50
 STA 240+00 TO STA 242+00
 STA 242+00 TO STA 242+50

Construct Special Ditch Item 101
 Sta. 233 + 00 To Sta. 234 + 50 RL
 Sta. 234 + 75 To Sta. 243 + 00 LT

Three Cable Guard Rail With Steel Posts
 Item 543
 Sta. 232+00 - 236+50 RL
 Sta. 232+15 - 233+75 RL
 Sta. 234+15 - 236+30 RL

Demolition and Removal of Building
 Item 586
 Sta. 242 + 00 RL
 Sta. 243 + 50 RL

CULVERT
 ITEM 104

PRJ. NO.	STATE	FED. AID PROJECT	SHEET NO.	TOTAL SHEETS
1	VT	6,122 (5)	18	136

MAIN LINE 234+00 LT
 MAIN LINE 241+00 RT
 MAIN LINE 241+31 RT
 APPROACH 243+85 RT
 APPROACH 243+58 RT DRIVERT
 APPROACH 243+85 LT
 MAIN LINE 244+00 LT

Construct Approach
 Sta. 243 + 75 LT
 Sta. 243 + 85 RT

NOTE: (Shaded Area 600SF) STATE OF VERMONT TO JOHN MARTIN BY D.C.D. DATED MAY 20, 1981 REC. MAY 26, 1981 IN BY 79 PG. 202 IN THE TOWN OF SPRINGFIELD LAND RECORDS.

#19 DONALD C & CONSTANCE D DAVIS
 (A.O. 23) STA 239+99-241+45±
 W.D.E. 12/5/56
 RECORDED: SPRINGFIELD BK 56 PG 242-243 12/2/56

BM #40
 Spot on Conc. Hole
 Elev. 576.33

DOT 244+756
 Appr. 23+85.3
 Δ 52°13' LT
 Δ 0+00.0
 Δ 18° 06' LT
 Δ 0+00.0
 Δ 153° 28' RT

DOT 244+807

Sta. 243 + 90
 New 18" x 30" R.C.P. Skew 39° RL
 R.C.D.I. With Cover Rt.

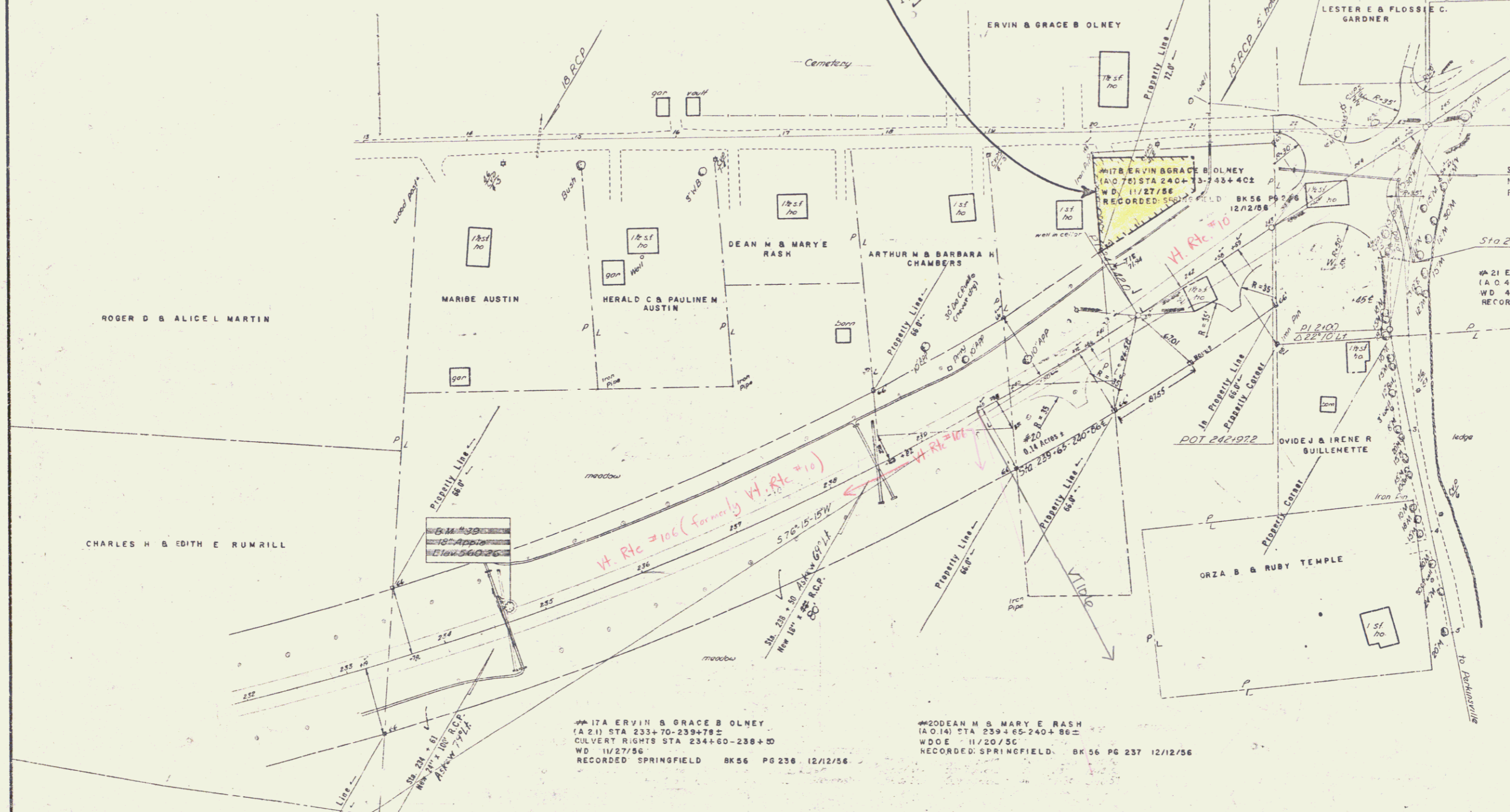
Sta 243+80-12" ACC.G.M.P. Poor
 Remove

#21 EDWARD W & MABEL L STEVENS
 (A.O. 46) STA 242+38-244+45±
 W.D. 4/29/57
 RECORDED: SPRINGFIELD BK 56 PG 304-305 5/6/67

DOT 242+1922

#17A ERVIN & GRACE B OLNEY
 (A. 21) STA 233+70-239+78±
 CULVERT RIGHTS STA 234+60-238+50
 W.D. 11/27/56
 RECORDED: SPRINGFIELD BK 56 PG 236 12/12/56

#20 DEAN M & MARY E RASH
 (A.O. 14) STA 239+65-240+88±
 W.D.E. 11/20/56
 RECORDED: SPRINGFIELD BK 56 PG 237 12/12/56



SPRINGFIELD

Surveyed by Payer
 Plotted by Jones
 Traced by Trask
 Series F No. 123 (6)
 SHEET 18

THE CLARKESON ENGINEERING CO., INC.
 BOSTON CONSULTING ENGINEERS
 MASSACHUSETTS