

--- Concrete Drain
 --- Sewer Pipe
 --- Water Pipe
 --- Gas Pipe
 --- Electric Cable
 --- Telephone Cable
 --- Fire Alarm Cable
 --- Cable TV
 --- Fiber Optic
 --- Other

Demolition and Removal of Building
 Item 586
 Sta. 228 + 25 RL
 Sta. 229 + 00 RL
 Sta. 229 + 50 RL
 Sta. 229 + 75 RL

Water Pipe Sleeve, Item 431, and 2" Seamless Copper Waterpipe
 Item 598 at Sta. 228 + 00'. Install Sleeve and Waterpipe
 furnished by the State of Vermont. Any Excavation is to be
 paid for as Trench Excavation, Item 103

Three Cable Guard Rail With Steel Posts
 Item 543
 MAIN LINE 216+00 - 218+00 RT
 MAIN LINE 218+00 - 221+10 LT
 MAIN LINE 221+10 - 224+00 RT
 MAIN LINE 224+00 - 227+00 LT
 MAIN LINE 227+00 - 230+00 RT
 MAIN LINE 230+00 - 232+00 RT

C.B.R. TREE
ITEM 104

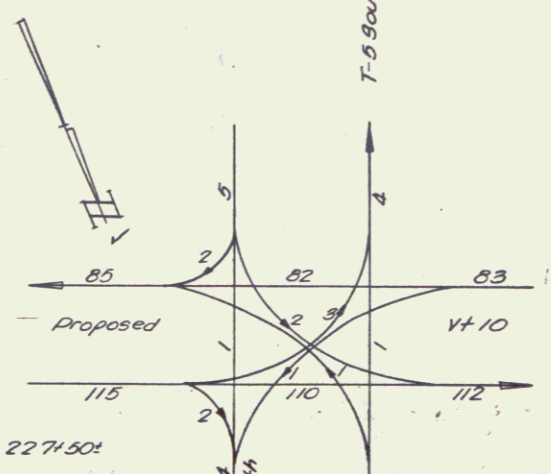
ARTHUR K KING

P.I. 8+13.0
Δ 92° 39' 30" RT

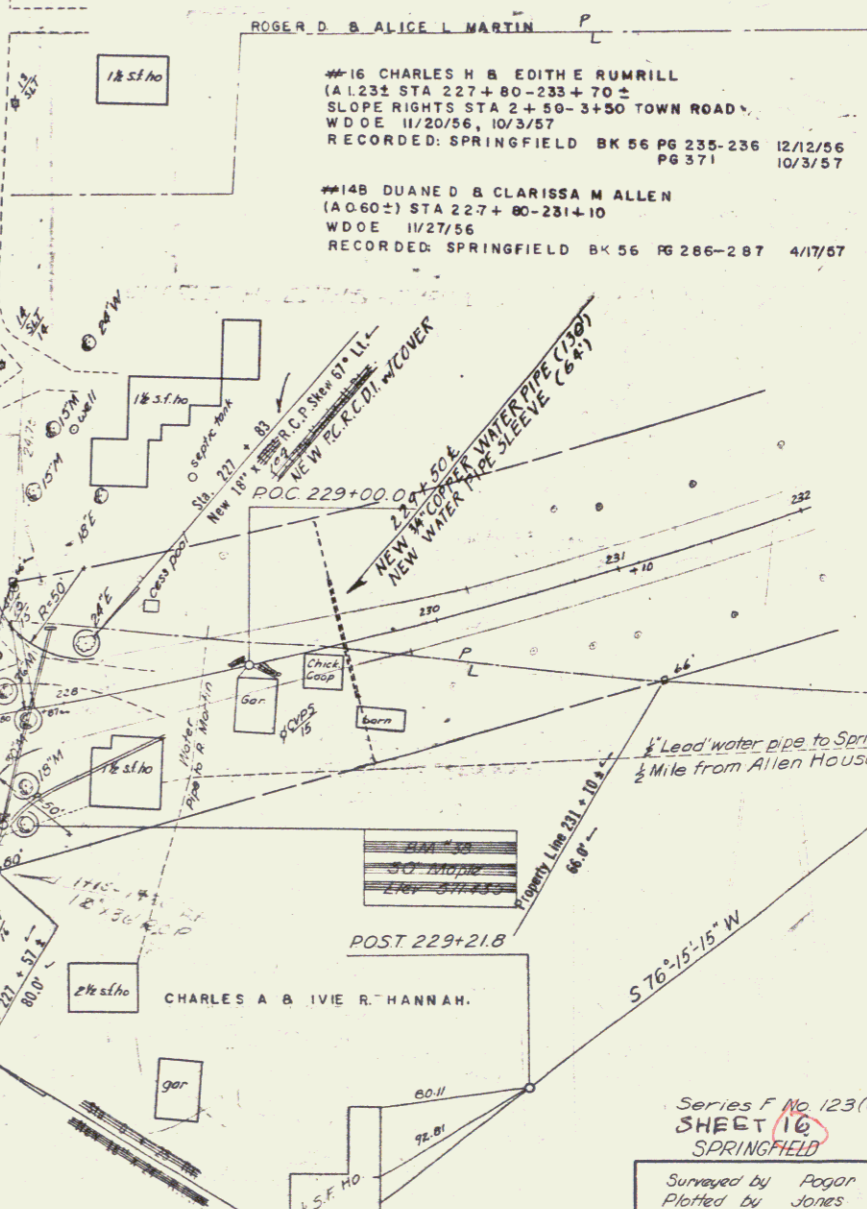
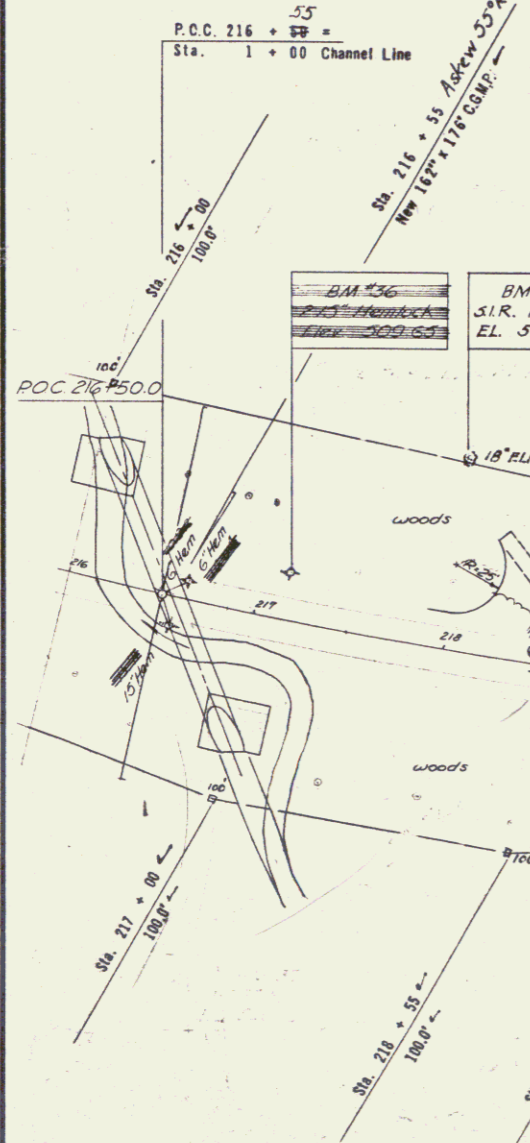
PUB. NO.	STATE	FED. AID PROJECT	FISCAL YEAR	SHEET NO.	TOTAL SHEETS
1	VT	61	56	10	15

#14A DUANE D & CLARISSA ALLEN
 (A.2543) STA 218+55-224+30Z
 W.D.O.E. 11/27/56
 RECORDED: SPRINGFIELD BK 56 PG 286-287
 4/17/57

CONSTRUCT DRIVE
 MAIN LINE 218+50 LT
 MAIN LINE 219+00 RT
 MAIN LINE 221+17 RT
 MAIN LINE 225+65 LT
 APPROACH 3+13 RT
 MAIN LINE 228+84 RT



REVISED CURVE DATA
 Δ = 92° 48' 45" Ltv
 D = 2° 15'
 R = 2864.9'
 T = 3009.1'
 L = 4640.6'
 E = 1289.9'
 Bank 1/2 per. ft.



#15 JOHN F HRONEK
 (A.032) STA 226+04-227+37Z
 COND. 10/11/56
 RECORDED: SPRINGFIELD BK 5 PG 235-236
 PG 371 10/3/57

#16 CHARLES H & EDITH RUMRILL
 (A.123) STA 227+80-233+70Z
 SLOPE RIGHTS STA 2+50-3+50 TOWN ROAD
 W.D.O.E. 11/20/56, 10/24/57
 RECORDED: SPRINGFIELD BK 56 PG 235-236
 PG 371 10/3/57

#14B DUANE D & CLARISSA M ALLEN
 (A.0602) STA 227+80-231+10
 W.D.O.E. 11/27/56
 RECORDED: SPRINGFIELD BK 56 PG 286-287
 4/17/57

Series F No. 123(6)
SHEET 10
 SPRINGFIELD
 Surveyed by Pogor
 Plotted by Jones
 Traced by Trosh

THE CLARKESON ENGINEERING CO., INC.
 CONSULTING ENGINEERS
 BOSTON MASSACHUSETTS

6