

Construct Drive
 Construct Special Ditch
 Item 598
 Item 599
 Item 600
 Item 601
 Item 602
 Item 603
 Item 604
 Item 605
 Item 606
 Item 607
 Item 608
 Item 609
 Item 610
 Item 611
 Item 612
 Item 613
 Item 614
 Item 615
 Item 616
 Item 617
 Item 618
 Item 619
 Item 620
 Item 621
 Item 622
 Item 623
 Item 624
 Item 625
 Item 626
 Item 627
 Item 628
 Item 629
 Item 630
 Item 631
 Item 632
 Item 633
 Item 634
 Item 635
 Item 636
 Item 637
 Item 638
 Item 639
 Item 640
 Item 641
 Item 642
 Item 643
 Item 644
 Item 645
 Item 646
 Item 647
 Item 648
 Item 649
 Item 650
 Item 651
 Item 652
 Item 653
 Item 654
 Item 655
 Item 656
 Item 657
 Item 658
 Item 659
 Item 660
 Item 661
 Item 662
 Item 663
 Item 664
 Item 665
 Item 666
 Item 667
 Item 668
 Item 669
 Item 670
 Item 671
 Item 672
 Item 673
 Item 674
 Item 675
 Item 676
 Item 677
 Item 678
 Item 679
 Item 680
 Item 681
 Item 682
 Item 683
 Item 684
 Item 685
 Item 686
 Item 687
 Item 688
 Item 689
 Item 690
 Item 691
 Item 692
 Item 693
 Item 694
 Item 695
 Item 696
 Item 697
 Item 698
 Item 699
 Item 700
 Item 701
 Item 702
 Item 703
 Item 704
 Item 705
 Item 706
 Item 707
 Item 708
 Item 709
 Item 710
 Item 711
 Item 712
 Item 713
 Item 714
 Item 715
 Item 716
 Item 717
 Item 718
 Item 719
 Item 720
 Item 721
 Item 722
 Item 723
 Item 724
 Item 725
 Item 726
 Item 727
 Item 728
 Item 729
 Item 730
 Item 731
 Item 732
 Item 733
 Item 734
 Item 735
 Item 736
 Item 737
 Item 738
 Item 739
 Item 740
 Item 741
 Item 742
 Item 743
 Item 744
 Item 745
 Item 746
 Item 747
 Item 748
 Item 749
 Item 750
 Item 751
 Item 752
 Item 753
 Item 754
 Item 755
 Item 756
 Item 757
 Item 758
 Item 759
 Item 760
 Item 761
 Item 762
 Item 763
 Item 764
 Item 765
 Item 766
 Item 767
 Item 768
 Item 769
 Item 770
 Item 771
 Item 772
 Item 773
 Item 774
 Item 775
 Item 776
 Item 777
 Item 778
 Item 779
 Item 780
 Item 781
 Item 782
 Item 783
 Item 784
 Item 785
 Item 786
 Item 787
 Item 788
 Item 789
 Item 790
 Item 791
 Item 792
 Item 793
 Item 794
 Item 795
 Item 796
 Item 797
 Item 798
 Item 799
 Item 800
 Item 801
 Item 802
 Item 803
 Item 804
 Item 805
 Item 806
 Item 807
 Item 808
 Item 809
 Item 810
 Item 811
 Item 812
 Item 813
 Item 814
 Item 815
 Item 816
 Item 817
 Item 818
 Item 819
 Item 820
 Item 821
 Item 822
 Item 823
 Item 824
 Item 825
 Item 826
 Item 827
 Item 828
 Item 829
 Item 830
 Item 831
 Item 832
 Item 833
 Item 834
 Item 835
 Item 836
 Item 837
 Item 838
 Item 839
 Item 840
 Item 841
 Item 842
 Item 843
 Item 844
 Item 845
 Item 846
 Item 847
 Item 848
 Item 849
 Item 850
 Item 851
 Item 852
 Item 853
 Item 854
 Item 855
 Item 856
 Item 857
 Item 858
 Item 859
 Item 860
 Item 861
 Item 862
 Item 863
 Item 864
 Item 865
 Item 866
 Item 867
 Item 868
 Item 869
 Item 870
 Item 871
 Item 872
 Item 873
 Item 874
 Item 875
 Item 876
 Item 877
 Item 878
 Item 879
 Item 880
 Item 881
 Item 882
 Item 883
 Item 884
 Item 885
 Item 886
 Item 887
 Item 888
 Item 889
 Item 890
 Item 891
 Item 892
 Item 893
 Item 894
 Item 895
 Item 896
 Item 897
 Item 898
 Item 899
 Item 900
 Item 901
 Item 902
 Item 903
 Item 904
 Item 905
 Item 906
 Item 907
 Item 908
 Item 909
 Item 910
 Item 911
 Item 912
 Item 913
 Item 914
 Item 915
 Item 916
 Item 917
 Item 918
 Item 919
 Item 920
 Item 921
 Item 922
 Item 923
 Item 924
 Item 925
 Item 926
 Item 927
 Item 928
 Item 929
 Item 930
 Item 931
 Item 932
 Item 933
 Item 934
 Item 935
 Item 936
 Item 937
 Item 938
 Item 939
 Item 940
 Item 941
 Item 942
 Item 943
 Item 944
 Item 945
 Item 946
 Item 947
 Item 948
 Item 949
 Item 950
 Item 951
 Item 952
 Item 953
 Item 954
 Item 955
 Item 956
 Item 957
 Item 958
 Item 959
 Item 960
 Item 961
 Item 962
 Item 963
 Item 964
 Item 965
 Item 966
 Item 967
 Item 968
 Item 969
 Item 970
 Item 971
 Item 972
 Item 973
 Item 974
 Item 975
 Item 976
 Item 977
 Item 978
 Item 979
 Item 980
 Item 981
 Item 982
 Item 983
 Item 984
 Item 985
 Item 986
 Item 987
 Item 988
 Item 989
 Item 990
 Item 991
 Item 992
 Item 993
 Item 994
 Item 995
 Item 996
 Item 997
 Item 998
 Item 999
 Item 1000

3/4" Seamless Copper Water Pipe
 Item 598
 (Actual Stations of Water Pipe to be Determined in the Field)
 207+00-214+50 LT, 214+45 L, 214-45 - 214+50 RT
 RIGHT OF WAY 510 ITEM
 Water Pipe Sleeve, Item 431 and 2" Seamless Copper Water Tube, Item 598
 STA. 206+00 - 208+00, Install Sleeves and Water Pipes furnished
 by the State of Vermont. Any Excavation is to be paid for as
 Trench Excavation, Item 103.

CONSTRUCT SPECIAL DITCH
 200+00 LT - 4100 FT APPROACH
 205+00 RT - 205+30 RT
 207+00 LT - 200 FT LINE WITH PIPE
 215+25 RT - 214+00 RT
 CONTROL OF SECTION OF OLD HIGHWAY BEGINNING AT A POINT IN VERMONT RTE. 106,
 AT ITS INTERSECTION WITH FORMER VERMONT RTE. 10, SAID POINT BEING 790' LEFT OR
 WESTERLY OF APPROX. SURV. STA. 195+30 OF C. OF PROJECT F 123 (G) AND CONTINUING
 NORTHERLY 0.20 MI TO A POINT 90' LEFT OR WESTERLY OF SURV. STA. 203+10 OF
 C. OF SAID PROJECT RELINQUISHED TO THE TOWN OF SPRINGFIELD, AND RECORDED
 IN BOOK 5, PAGE 84, OF HIGHWAY RECORDS, OF THE TOWN OF SPRINGFIELD, ON THE 7TH
 DAY OF OCTOBER, 1958.

DI 4-640 TOX =
 PT 31-300 Jewett
 Δ 5° 02' 14"
 DI 5150.0
 Δ 13° 34' 24"

Route 106
 Revised Curve Data
 Δ = 24° 57' 30" L
 D = 5° 30'
 P = 1042.1
 T = 230.6
 L = 453.8
 E = 25.2

12 FRED M & ALMA L CLARK
 (A 130) STA 203+45-208+40 ±
 CULVERT RIGHTS-STA 207+00 ±
 W.D.E. 11/20/56
 RECORDED: SPRINGFIELD-BK 56-PG 232-233-12/12/56

10 EDWIN J & ADA KING MORSE
 CULVERT RIGHTS-STA 201+00
 COND. 10/11/56
 RECORDED: SPRINGFIELD-BK 56-PG 36-39-10/11/56

10 EDWIN J & ADA KING MORSE
 DRAINAGE DITCH STA 198+00-200+36
 W.D. 11/16/57
 RECORDED: SPRINGFIELD BK 56
 PG 376 11/8/57

11 WILLIAM JOHN & VIRGINIA M. BLAKE
 (A.O.I.) STA 203+50-204+80 ±
 W.D.E. 11/27/56
 RECORDED: SPRINGFIELD BK 56-PG 231-233 12/12/56

CONSTRUCT DRIVE
 201+22 LT
 APPROACH 11+25 LT - 13+60 LT
 APPROACH 8+03 LT - 8+85 LT
 APPROACH 9+03 LT - 216+40 LT (MAIN LINE)
 MAIN LINE 20+40 RT - 208+70 RT
 MAIN LINE 21+163 RT - 216+00 RT

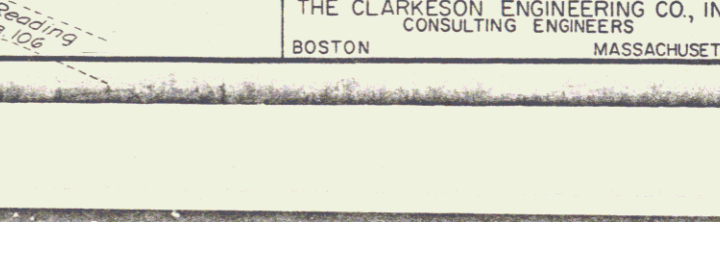
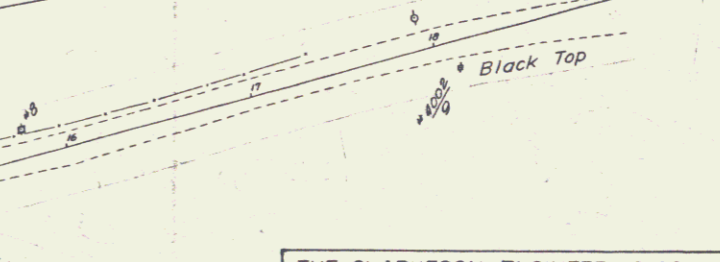
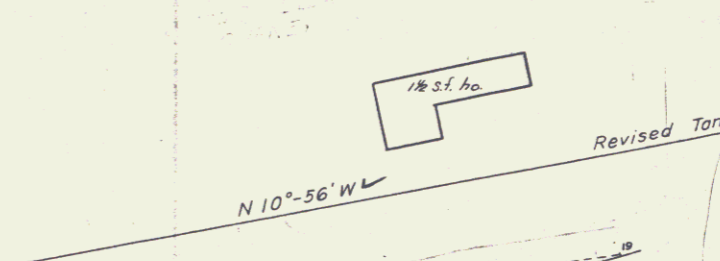
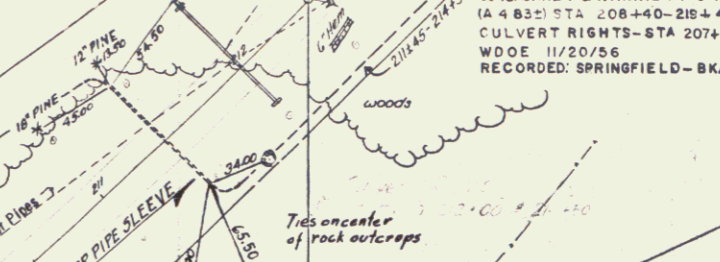
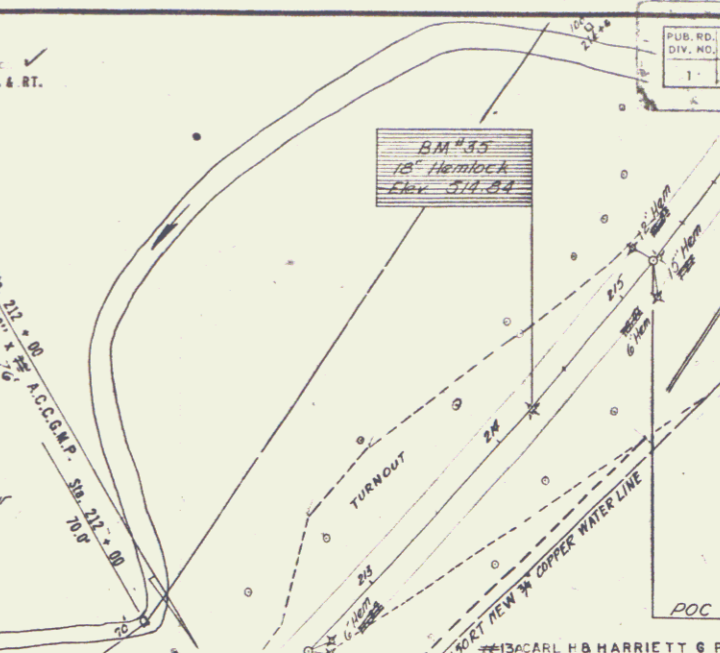
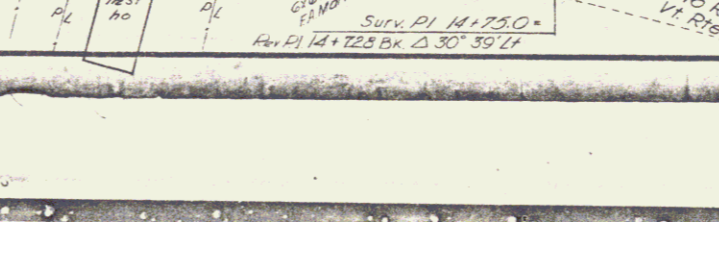
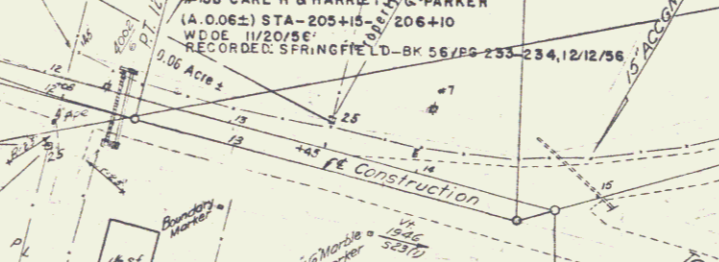
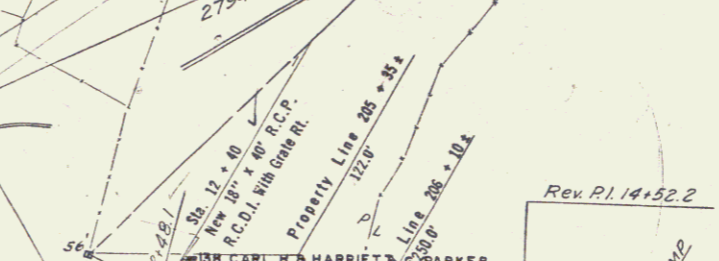
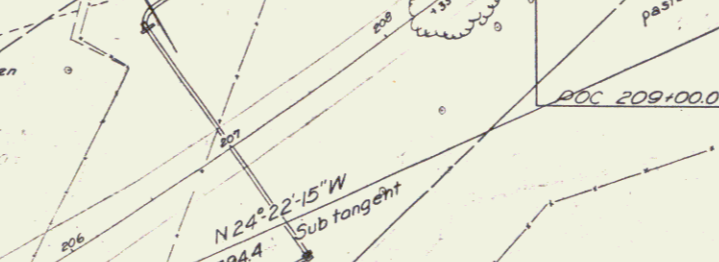
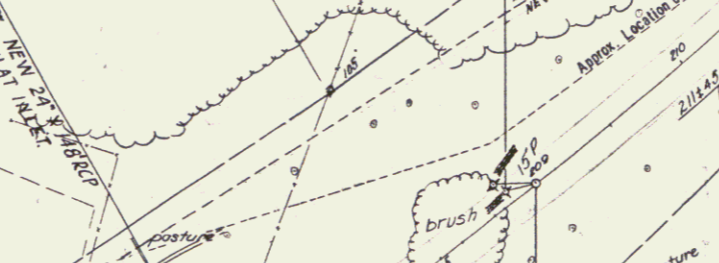
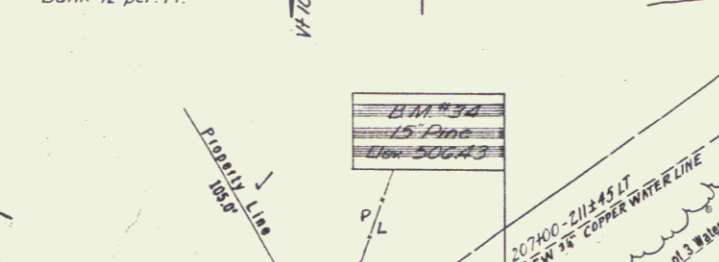
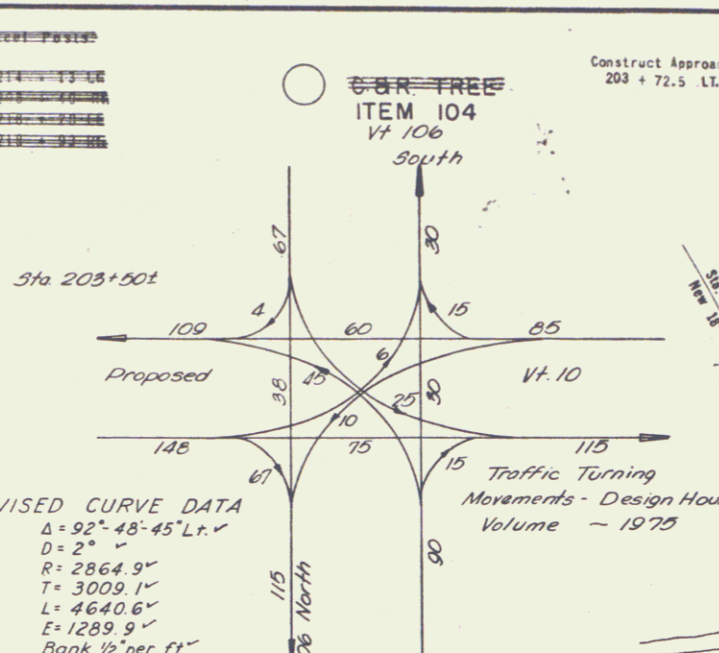
THREE CABLE G.R. W/ STEEL POSTS
 APPROACH 11+25 LT - 13+60 LT
 APPROACH 8+03 LT - 8+85 LT
 APPROACH 9+03 LT - 216+40 LT (MAIN LINE)
 MAIN LINE 20+40 RT - 208+70 RT
 MAIN LINE 21+163 RT - 216+00 RT

CONSTRUCT DRIVE
 201+22 LT
 APPROACH 11+25 LT - 13+60 LT
 APPROACH 8+03 LT - 8+85 LT
 APPROACH 9+03 LT - 216+40 LT (MAIN LINE)
 MAIN LINE 20+40 RT - 208+70 RT
 MAIN LINE 21+163 RT - 216+00 RT

CONSTRUCT DRIVE
 201+22 LT
 APPROACH 11+25 LT - 13+60 LT
 APPROACH 8+03 LT - 8+85 LT
 APPROACH 9+03 LT - 216+40 LT (MAIN LINE)
 MAIN LINE 20+40 RT - 208+70 RT
 MAIN LINE 21+163 RT - 216+00 RT

CONSTRUCT DRIVE
 201+22 LT
 APPROACH 11+25 LT - 13+60 LT
 APPROACH 8+03 LT - 8+85 LT
 APPROACH 9+03 LT - 216+40 LT (MAIN LINE)
 MAIN LINE 20+40 RT - 208+70 RT
 MAIN LINE 21+163 RT - 216+00 RT

CONSTRUCT DRIVE
 201+22 LT
 APPROACH 11+25 LT - 13+60 LT
 APPROACH 8+03 LT - 8+85 LT
 APPROACH 9+03 LT - 216+40 LT (MAIN LINE)
 MAIN LINE 20+40 RT - 208+70 RT
 MAIN LINE 21+163 RT - 216+00 RT



PUB. NO.	STATE	FED. AID PROJECT	FISCAL YEAR	SHEET NO.	TOTAL SHEETS
1	VT	F 123 (6)		14	36

BM 33
 12" Hemlock
 Elev. 314.84

13 CARL H B HARRIETT & PARKER
 (A 483) STA 208+40-218+40
 CULVERT RIGHTS-STA 207+00, 212+00, 216+50
 W.D.E. 11/20/56
 RECORDED: SPRINGFIELD-BK 56-PG 233-234-12/12/56

14 EDWIN J & ADA KING MORSE
 CULVERT RIGHTS-STA 201+00
 COND. 10/11/56
 RECORDED: SPRINGFIELD-BK 56-PG 36-39-10/11/56

15 WILLIAM JOHN & VIRGINIA M. BLAKE
 (A.O.I.) STA 203+50-204+80 ±
 W.D.E. 11/27/56
 RECORDED: SPRINGFIELD BK 56-PG 231-233 12/12/56

16 EDWIN J & ADA KING MORSE
 DRAINAGE DITCH STA 198+00-200+36
 W.D. 11/16/57
 RECORDED: SPRINGFIELD BK 56
 PG 376 11/8/57

17 FRED M & ALMA L CLARK
 (A 130) STA 203+45-208+40 ±
 CULVERT RIGHTS-STA 207+00 ±
 W.D.E. 11/20/56
 RECORDED: SPRINGFIELD-BK 56-PG 232-233-12/12/56

18 EDWIN J & ADA KING MORSE
 CULVERT RIGHTS-STA 201+00
 COND. 10/11/56
 RECORDED: SPRINGFIELD-BK 56-PG 36-39-10/11/56

THE CLARKESON ENGINEERING CO., INC.
 CONSULTING ENGINEERS
 BOSTON MASSACHUSETTS

SPRINGFIELD
 Surveyed by Roger
 Plotted by Jones
 Traced by Trask
 Series F No 123 (6)
 SHEET 14