

INDEX OF SHEETS

- TITLE PAGE
- TYPICAL CROSS SECTION OF IMPROVEMENT (2" BITUMINOUS CONCRETE PAVEMENT, ITEM 561-B)
- QUANTITY SHEET (ITEMS)
- QUANTITY SHEET (DRAINAGE)
- EARTHWORK SHEET
- PLAN AND PROFILE SHEETS
- ROADWAY STANDARD SHEET RS 56-1 (BANKING TABLES)
- ROADWAY STANDARD SHEET RS 56-2 (DRAINAGE)
- ROADWAY STANDARD SHEET RS 56-3 (BOUNDARY MARKERS)
- ROADWAY STANDARD SHEET RS 56-4 (UNDERDRAIN)
- ROADWAY STANDARD SHEET RS 56-5 (SIDEWALK)
- ROADWAY STANDARD SHEET RS 56-6 (TYPICAL GRADING)
- ROADWAY STANDARD SHEET RS 56-9 (DRILLING & BLASTING)
- ROADWAY STANDARD SHEET RS 56-11 (THREE CABLE GUARD RAIL)
- ROADWAY STANDARD SHEET RS 56-12 (BARRICADES, SIGNS, & LIGHTS)
- ROADWAY STANDARD SHEET RS 56-14 (DROP INLETS)
- CROSS SECTIONS

**STATE OF VERMONT
DEPARTMENT OF HIGHWAYS
PROPOSED IMPROVEMENT**

**TOWN OF SPRINGFIELD
COUNTY OF WINDSOR
SPRINGFIELD - GASSETTS ROAD
VERMONT ROUTE 106**

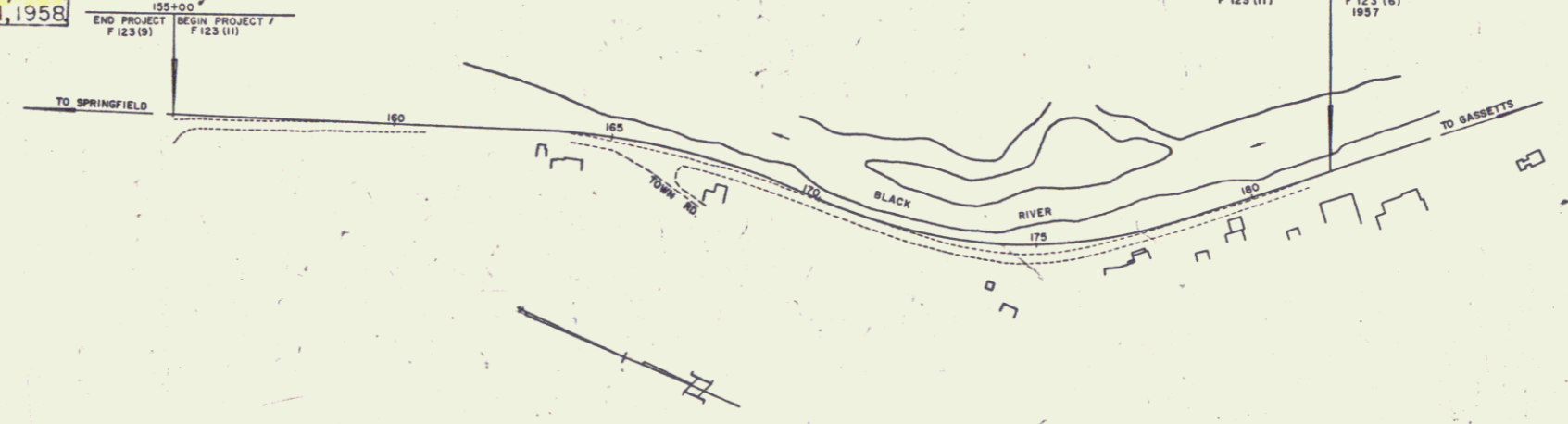
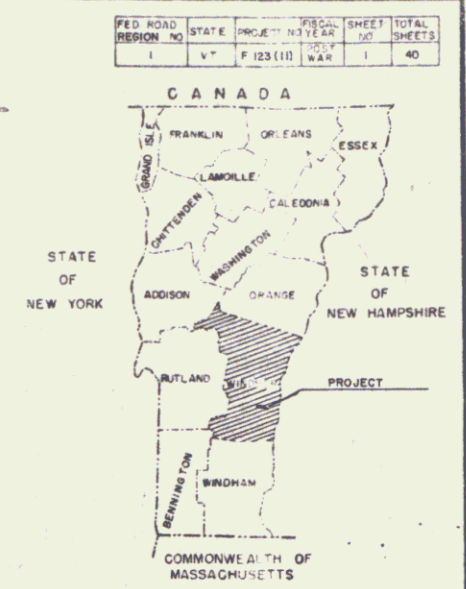
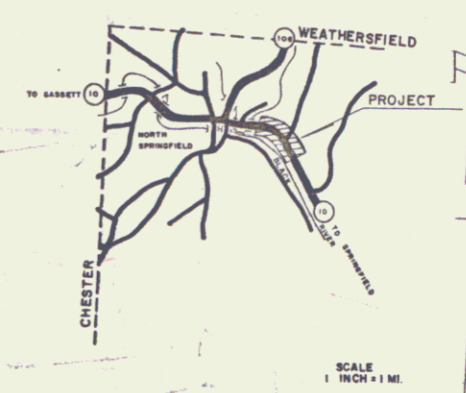
FEDERAL AID PROJECT

PROJECT NAME & NUMBER	TYPE	PAVEMENT	AREA
SPRINGFIELD F-123(II)	2 1/2" BIT. CONC. PAVT. ITEM 561-B & 4" MACADAM BASE COURSE IT 20		9585.06 sy.
RECORD PLANS MATERIALS			
ASPHALT	TEXAS CO.	PROVIDENCE, R. I.	
TAR	KOPPERS PRODUCTS CO.	EVERETT, MASS.	
REINF. CONCRETE PIPE	VERMONT CONCRETE PIPE CO.	WINDSOR, V.T.	
ASPH. CTD. CORR. METAL PIPE	NEW ENGLAND METAL PIPE CO.	PALMER, MASS.	
REINFORCING STEEL	VERMONT STRUCTURAL STEEL CO.	BURLINGTON, V.T.	
BITUMINOUS CONCRETE	COLD RIVER HOT MIX CORP.	WALPOLE, N.H.	
MACADAM BASE COURSE	COLD RIVER SAND & GRAVEL CORP.	WALPOLE, N.H.	
GUARD RAIL CABLE	BETHLEHEM STEEL	SPRINGFIELD, MD.	
CONTRACTOR - FRANK W. WHITCOMB CONST. CORP.			
RES. ENGINEER - M. VAN KLEEF JR.			
RECORD PLANS - E. C. GLYSSON			
CONTRACT DATED FEBRUARY 26, 1958			
CONTRACT STARTED MARCH 3, 1958			
CONTRACT COMPLETED AUG. 21, 1958			
CONTRACT ACCEPTED AUG. 21, 1958			

BEGINNING AT A POINT 2.434 MILES SOUTHEASTERLY OF THE CHESTER-SPRINGFIELD TOWN LINE ON VT. ROUTE #10 AND EXTENDING NORTHERLY 0.511 MILES.

LENGTH OF PROJECT 26958 FT. = 0.511 MILES

ADT 1955	820
ADT 1975	130
DHV 1975	207
D	57%
T	6%



CONVENTIONAL SIGNS

R.O.W. LINE	---
COUNTY LINE	---
TOWN LINE	---
FENCE LINE	---
STONE WALL	---
UNFENCED PROPERTY	---
GUARD RAIL	---
TRAVELED WAY	---
RAILROAD	---
RETAINING WALL	---
CENTER LINE	---
SURVEY LINE	---
CULVERT	---
DROP INLET	---
TROLLEY POLE	---
POWER POLE	---
TELEPHONE POLE	---
TREES	---
HEDGE	---

CONTRACTOR - FRANK W. WHITCOMB CONST. CORP.
COMPLETED - AUGUST 21, 1958.
RECORD PLANS - E. C. GLYSSON.

SCALES

TITLE	1" = 300'
TYPICAL	1" = 2'
PLAN	1" = 50'
PROFILE HORIZONTAL	1" = 50'
PROFILE VERTICAL	1" = 10'
CROSS-SECTIONS	1" = 5'

RIGHT-OF-WAY DIVISION
TOWN FILE
PERPETUAL
Items of VT 106
(To Be Returned To R.O.W. Division)

Pin 00R235
NOTE: ANY FURTHER INFORMATION CONCERNING FINAL QUANTITIES, AMOUNTS OR OTHER DETAILS RELATIVE TO THIS PROJECT MAY BE FOUND IN EITHER THE FIELD BOOKS OR THE ESTIMATE FILE.

APPROVED SECONDARY ENGINEER	APPROVED DISTRICT ENGINEER	APPROVED BRIDGE ENGINEER	APPROVED DISTRICT ENGINEER	APPROVED HIGHWAY ENGINEER	APPROVED DISTRICT ENGINEER
DATE	DATE	DATE	DATE	DATE	DATE

DEPARTMENT OF COMMERCE
BUREAU OF PUBLIC ROADS

APPROVED _____
DISTRICT ENGINEER DATE _____

PROJECT F NO. 123(II)

SHEET 1 OF 40 SHEETS

STA 155+00
 END PROJECT, BEGIN PROJECT F 123 (III)
 F 123 (9)

THREE CABLE GUARD RAIL WITH STEEL POSTS
 LI 164+123-170+100
 ZI 162+95

GRANITE CURB
 163+25 = 163+25 RT
 163+25 = 163+25 RT
 163+25 = 163+25 RT
 163+25 = 163+25 RT
 163+25 = 163+25 RT
 163+25 = 163+25 RT

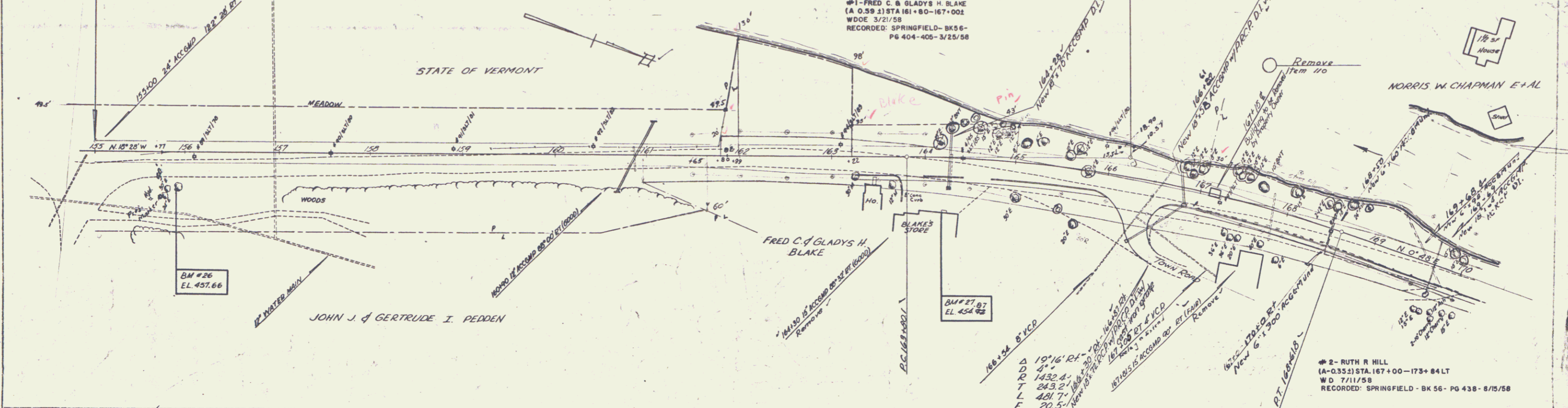
8" ONE COURSE CEMENT CONCRETE SIDEWALK
 163+25 = 163+25 RT
 163+25 = 163+25 RT
 163+25 = 163+25 RT
 163+25 = 163+25 RT
 163+25 = 163+25 RT

5" ONE COURSE CEMENT CONCRETE SIDEWALK
 163+25 = 163+25 RT
 163+25 = 163+25 RT
 163+25 = 163+25 RT
 163+25 = 163+25 RT
 163+25 = 163+25 RT

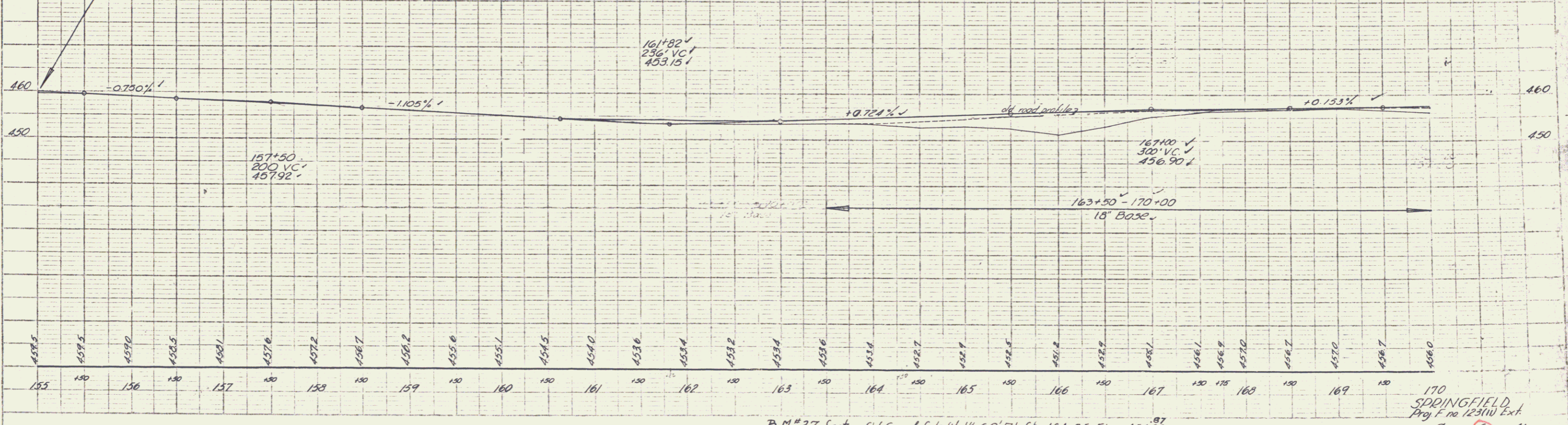
BITUMINOUS CONC. SIDEWALK 5" WIDE
 163+25 = 163+25 RT
 163+25 = 163+25 RT
 163+25 = 163+25 RT
 163+25 = 163+25 RT
 163+25 = 163+25 RT

Item 522
 Stone Fill for Slope Protection
 169+00 ~ 170+00 RT
 164+50 ~ 170+00 RT

DATE	
BY	
CHECKED	
APPROVED	
REVISIONS	
NO.	
DATE	
DESCRIPTION	
BY	
DATE	
DESCRIPTION	
BY	
DATE	
DESCRIPTION	



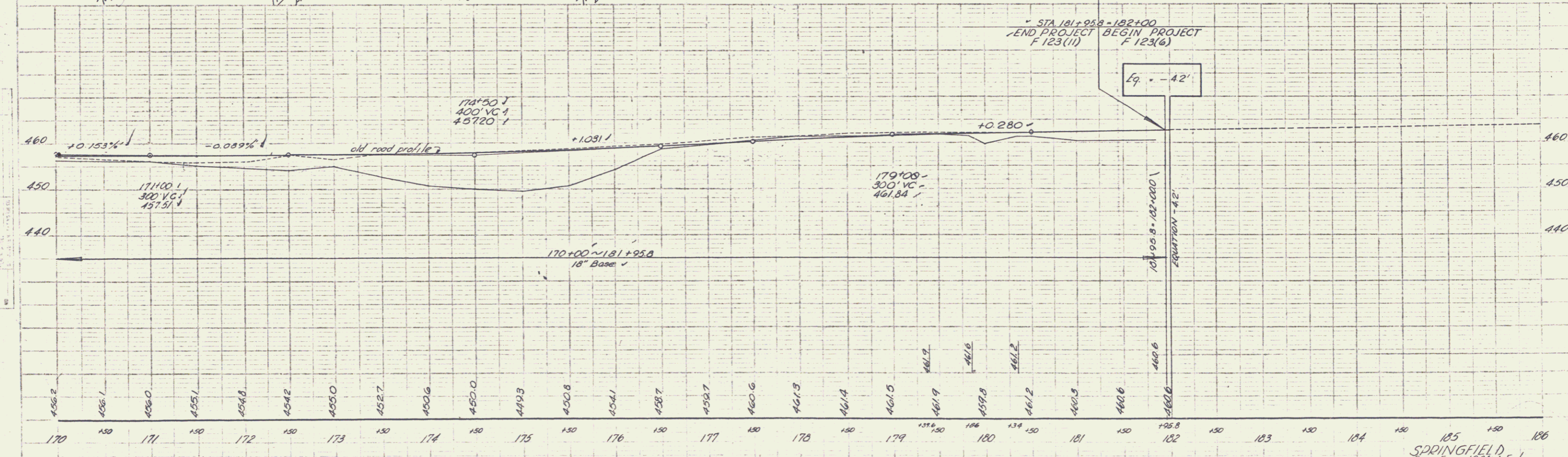
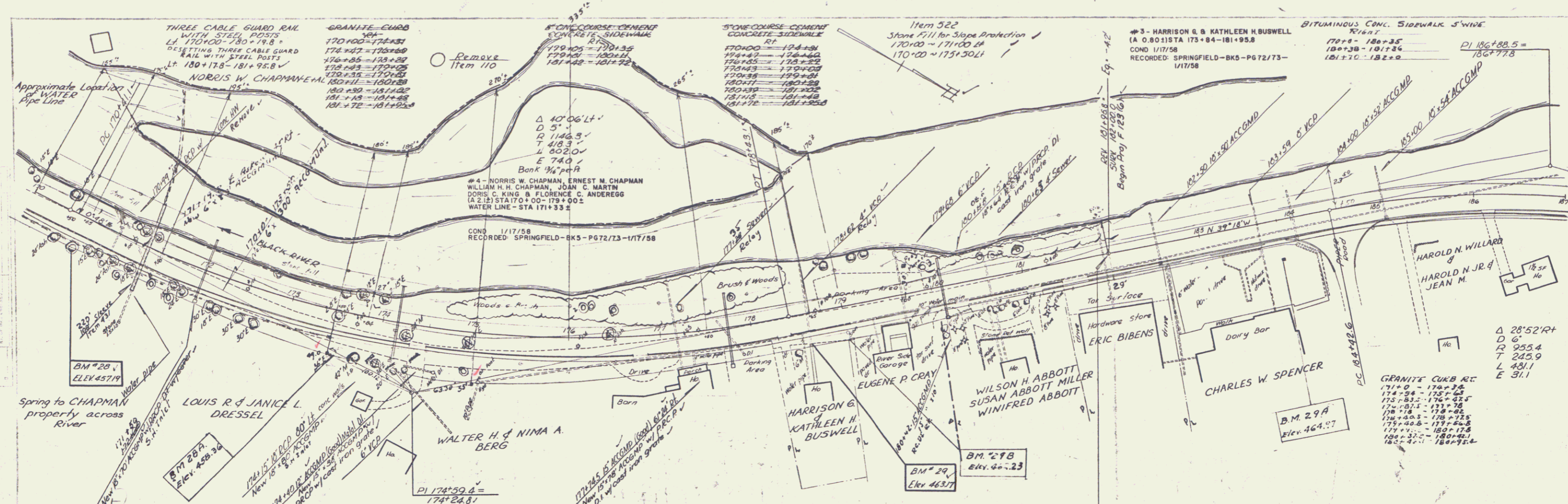
STA 155+00
 END PROJECT, BEGIN PROJECT F 123 (III)
 F 123 (9)



DATE	
BY	
CHECKED	
APPROVED	
REVISIONS	
NO.	
DATE	
DESCRIPTION	
BY	
DATE	
DESCRIPTION	
BY	
DATE	
DESCRIPTION	

B.M. #27 Spot on S.W. Cor. of Side Walk 60' RT. Sta. 164+25 Elev. 454.32

170 SPRINGFIELD
 Proj. F. No. 123(III) Ext.
 SHEET 6 OF 41



BM 28 S.I.R. 36' Maple 36' Rt. Sta. 170+60 Elev. 457.19
 BM 28 A. S.I.R. 30' Elm. 43' Rt. Sta. 173+5 Elev. 457.36

BM 29 Point Spot on Conc. Step 33' Rt. Sta. 178+59 Elev. 463.17
 B.M. 29 A. Spot on Curb - corner 42' Rt. Sta. 183+5 Elev. 464.97
 B.M. 29 B. on S.W. Cor. of Texaco Sign. 35' W. Sta. 179+0 Elev. 462.23

SPRINGFIELD
 Proj. No. 123(11) Ext.
 Sheet 7 of 41
 3