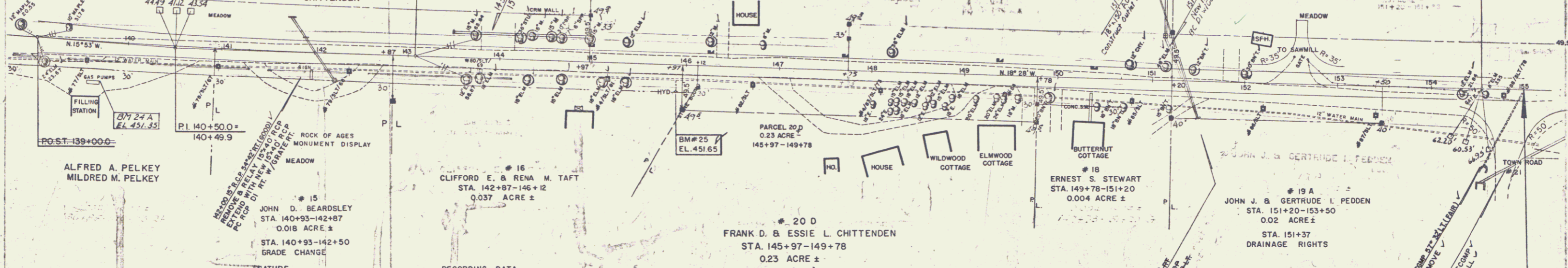


CONSTRUCT DRIVE
 STA 141+35 RT ✓
 STA 142+60 RT ✓
 STA 144+00 LT ✓
 STA 145+00 RT ✓
 STA 146+37 LT ✓
 STA 147+00 RT ✓
 STA 149+00 RT ✓
 STA 149+66 RT ✓
 STA 150+00 RT ✓
 STA 151+86 LT ✓
 STA 152+66 LT ✓
 STA 151+50 RT ✓
 STA 139+20 RT ✓
 STA 140+08 RT ✓

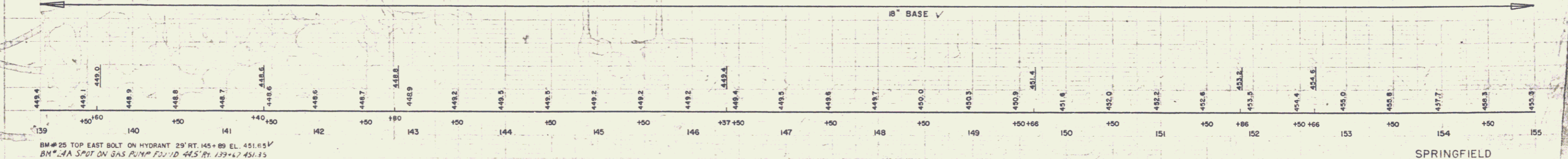
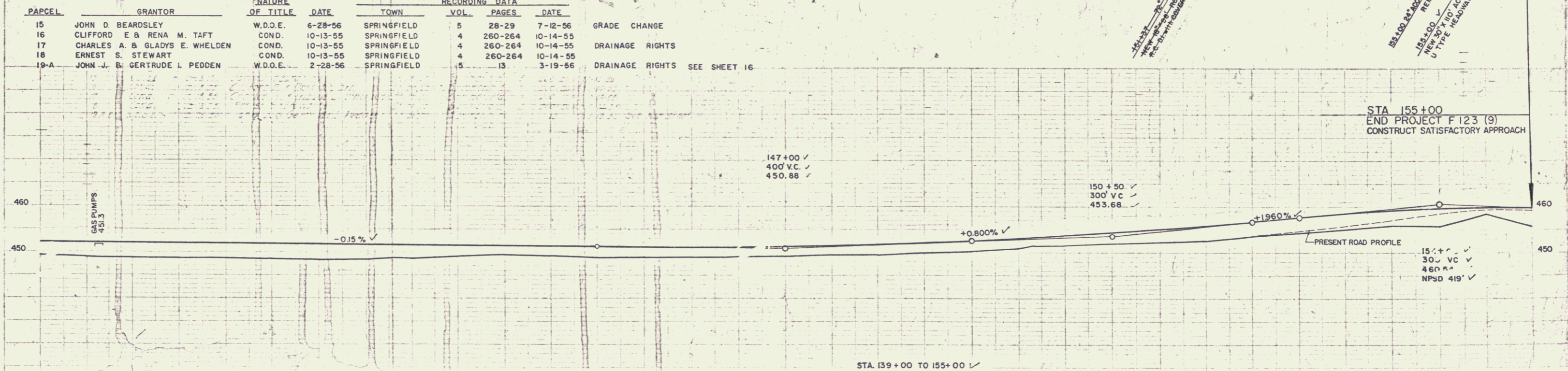
DITUMINOUS CONCRETE CURB
 ITEM 555
 139+00 - 139+07 RT
 139+37 - 139+50 RT
 140+25 - 141+31 RT
 141+51 - 142+05 RT
 142+58.5 - 144+13.5 RT

C. & R. TREE
 ITEM 110 ✓

CONSTRUCT APPROACH
 STA 155+00 RT ✓



PAPCEL	GRANTOR	NATURE OF TITLE	DATE	TOWN	VOL.	PAGES	DATE	RECORDING DATA
15	JOHN D. BEARDSLEY	W.D.O.E.	6-28-56	SPRINGFIELD	5	28-29	7-12-56	GRADE CHANGE
16	CLIFFORD E. & RENA M. TAFT	COND.	10-13-55	SPRINGFIELD	4	260-264	10-14-55	DRAINAGE RIGHTS
17	CHARLES A. & GLADYS E. WHELDEN	COND.	10-13-55	SPRINGFIELD	4	260-264	10-14-55	DRAINAGE RIGHTS
18	ERNEST S. STEWART	COND.	10-13-55	SPRINGFIELD	4	260-264	10-14-55	DRAINAGE RIGHTS
19-A	JOHN J. & GERTRUDE L. PEDDEN	W.D.O.E.	2-28-56	SPRINGFIELD	5	13	3-19-56	DRAINAGE RIGHTS SEE SHEET 16



BM# 25 TOP EAST BOLT ON HYDRANT 29' RT. 145+89 EL. 451.85 ✓
 BM# 24 SPOT ON GAS PUMP 20' RT. 139+67 EL. 451.35 ✓

SPRINGFIELD
 THE CLARKESON ENGINEERING CO., INC.
 CONSULTING ENGINEERS
 BOSTON MASSACHUSETTS
 SHEET 15 OF 114