

INDEX OF SHEETS

SHEET NO.	TITLE PAGE
2,2A	TYPICAL CROSS-SECTION OF IMPROVEMENT BITUMINOUS CONCRETE PAVEMENT (CLASS II) (FORM 361)
3	QUANTITY SHEET (ITEMS)
4,4A	QUANTITY SHEET (DRAINAGE)
5-7	EARTHWORK SHEETS
8-17	PLAN AND PROFILE SHEETS
18	PLAN AND DETAILS OF WALL AT STA. 69+45 TO 72+00
19	PLAN AND DETAILS OF CULVERT AT STA. 158+24
20	REINFORCING STEEL SCHEDULE
21	BANKING AND WIDENING TABLES
22	CONSTRUCTION DETAILS (DRAINAGE AND MARKERS)
23	CONSTRUCTION DETAILS CD-1 (DITCHES)
24	CONSTRUCTION DETAILS CD-2 (TYPICAL GRADING)
25	CONSTRUCTION DETAILS CD-4 (GRANITE CURB)
26	STANDARD STRUCTURE SHEET S8-II (BARRICADES, SIGNS AND LIGHTS)
27	STANDARD STRUCTURE SHEET S40 (BARRICADES, SIGNS AND LIGHTS)
28	STANDARD STRUCTURE SHEET S45-45 (PLANK GUARD RAIL)
29	STANDARD STRUCTURE SHEET S46-45 (DRAINAGE AND MARKERS)
30	STANDARD STRUCTURE SHEET S47-45 (R.C. DROP INLET)
31	STANDARD STRUCTURE SHEET S48-46 (THREE CABLE GUARD RAIL)
32	STANDARD STRUCTURE SHEET S53-48 (P.C. R.C.P. DROP INLET)
33	STANDARD STRUCTURE SHEET S55-2 (REINFORCED CONCRETE DROP INLET WITH 5" I.B.E.M. LOK GRATING)
34-114	CROSS-SECTIONS

STATE OF VERMONT  
DEPARTMENT OF HIGHWAYS

PROPOSED IMPROVEMENT

FEDERAL AID PROJECT

PLAN AND PROFILE OF PROPOSED  
STATE HIGHWAY

TOWN OF SPRINGFIELD  
COUNTY OF WINDSOR  
SPRINGFIELD-NORTH SPRINGFIELD ROAD  
VERMONT ROUTE 106

PROJECT NAME AND NUMBER	TYPE	PAVEMENT AREA
SPRINGFIELD F 123 (9)(10)	BITUM. CONCRETE	59,142 SQ.

RECORD PLANS  
MATERIALS

Gravel, Barlow Pit, Springfield, Vt.	Reinf. Steel, J.T. Ryerson, Boston, Mass.
Blaine Est., Springfield, Vt.	R.C.P., Vt. Conc. Pipe Co., Windsor, Vt.
Wm. Keeney Co. Inc., Everett, Mass.	ACI-M.P., Berger, Westminster, Vt.
Bitum. Conc. Pav., Cold River, Vt. Corp.	PALCOGMP, Berger, Westminster, Vt.
M. S. & J. Co., Windsor, Vt.	C.G. Fall, American Steel Wire Co., Worcester, Mass.
Concrete, Leno St., Windsor, Vt.	
Con. Asgr., The Kingsale, N.H.	
Contractor, Frank W. Whitcomb	Contract Dated, April 16, 1956
Insgr., M. Van Klee, Jr.	Contract Started, April 17, 1956
Inspectors, H. Washburn, M. Meadows	Contract Completed, June 20, 1957
Record Plans, M. Van Klee, Jr.	Contract Accepted, July 8, 1957

PROJECT F 123 (10)

BEGINNING IN THE TOWN OF SPRINGFIELD APPROXIMATELY 176.5 FEET NORTH OF THE INTERSECTION OF VERMONT ROUTE 10, VERMONT ROUTE 11 AND EXTENDING NORTHERLY 1745.4 FEET.

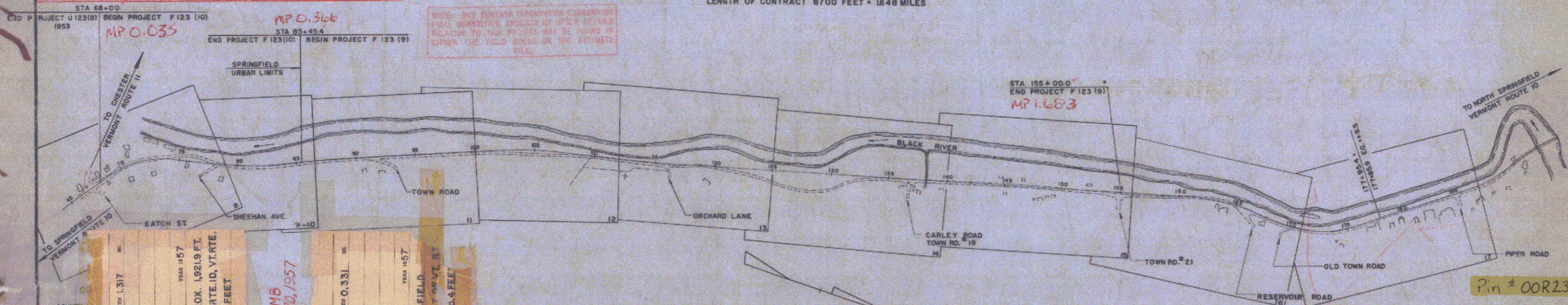
LENGTH OF PROJECT 1745.4 FEET = 0.331 MILES

PROJECT F 123 (9)

BEGINNING ON VERMONT ROUTE 10 APPROXIMATELY 1,921.9 FT. NORTHERLY OF THE INTERSECTION OF VERMONT ROUTE 10, VERMONT ROUTE 11 AND EXTENDING NORTHERLY 6,954.6 FT.

LENGTH OF PROJECT 6954.6 FEET = 1.317 MILES

LENGTH OF CONTRACT 8700 FEET = 1.648 MILES



MP 0.033  
MP 1.683

SPRINGFIELD F 123 (9)(10)  
CONTR. FRANK W. WHITCOMB  
CONST. COMPLETED JUNE 20, 1957

SPRINGFIELD F 123 (9)  
TYPE BITUMINOUS CONCRETE  
CONTRACTOR FRANK W. WHITCOMB

SPRINGFIELD F 123 (10)  
TYPE BITUMINOUS CONCRETE  
CONTRACTOR FRANK W. WHITCOMB

LOCATION BEGINNING ON VT. RTE. 10 APPROX. 1,921.9 FT. NORTHERLY OF THE INTERSECT. OF VT. RTE. 10, VERMONT ROUTE 11 AND EXTENDING NORTHERLY 6,954.6 FEET.

LOCATION BEGINNING IN THE TOWN OF SPRINGFIELD APPROX. 176.5 FT. NORTH OF THE INTERSECT. OF VT. RTE. 10, VERMONT ROUTE 11 AND EXTENDING NORTHERLY 1,745.4 FEET.

SCALES

TITLE	1" = 400'
TYPICAL	1" = 2'
PLAN	1" = 50'
PROFILE HORIZONTAL	1" = 50'
PROFILE VERTICAL	1" = 10'
CROSS-SECTIONS	1" = 5'

THE CLARKESON ENGINEERING CO., INC.  
CONSULTING ENGINEERS  
BOSTON MASSACHUSETTS

APPROVED <i>[Signature]</i> CONSTRUCTION ENGINEER DATE OCT 14 1955	APPROVED <i>[Signature]</i> DISTRICT ENGINEER DATE OCT 14 1955	APPROVED <i>[Signature]</i> DISTRICT ENGINEER DATE 1/24/56	APPROVED <i>[Signature]</i> HIGHWAY ENGINEER DATE OCT 14 1955	APPROVED <i>[Signature]</i> CHIEF ENGINEER DATE OCT 14 1955
---	---	---	--	--

THESE PLANS ARE SUBJECT TO SUCH REVISIONS AS MAY BE REQUIRED BY THE BUREAU OF PUBLIC ROADS OR THE COMMISSIONER OF HIGHWAYS.

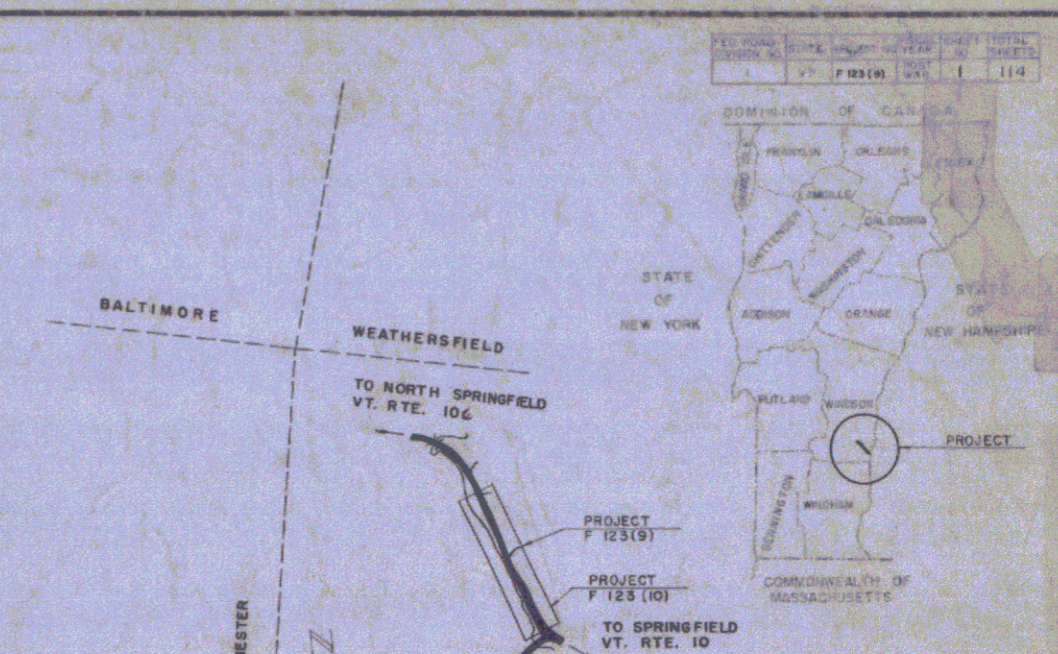
CONSTRUCTION IS TO BE CARRIED ON IN ACCORDANCE WITH THE PLANS AND THE STANDARD ROAD AND BRIDGE SPECIFICATIONS OF 1948, AS APPROVED JULY 20, 1949 BY THE BUREAU OF PUBLIC ROADS, INCLUDING ALL SUBSEQUENT APPROVED REVISIONS AND SUCH REVISED SPECIFICATIONS AND SPECIAL PROVISIONS AS ARE SUBMITTED WITH THE PLANS.

Project F 123 (9)(10)

DEPARTMENT OF COMMERCE  
BUREAU OF PUBLIC ROADS

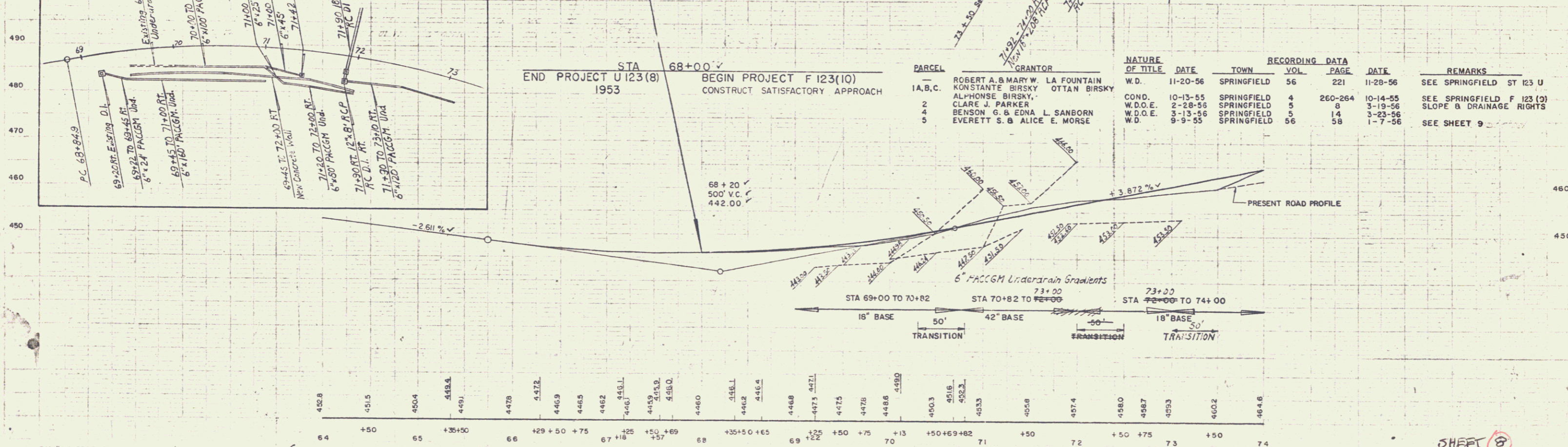
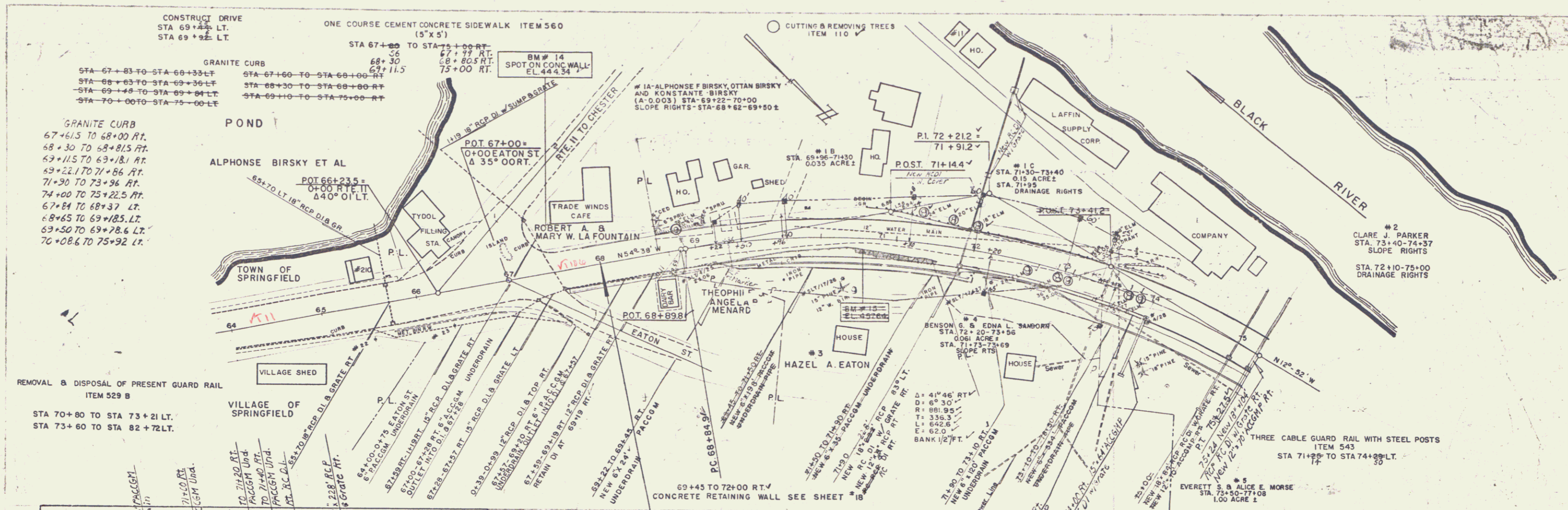
RECOMMENDED FOR APPROVAL	DATE
DISTRICT ENGINEER	
APPROVED	DATE
DIVISION ENGINEER	

PROJECT F NO. 123 (10)  
F 123 (9)  
SHEET 1 OF SHEETS 114



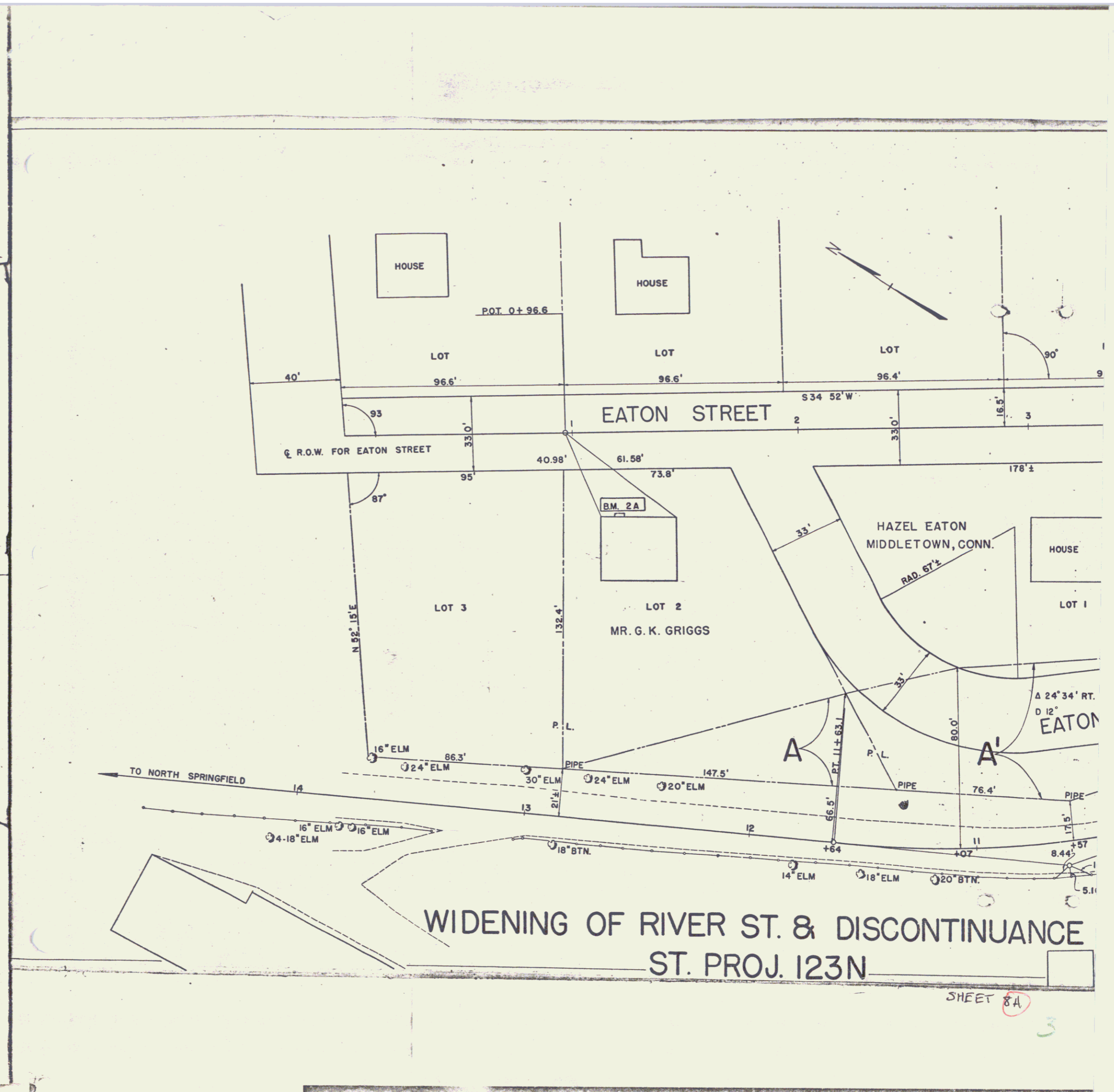
USGS MAP REFERENCE  
LUDLOW, VERMONT QUADRANGLE  
W 72° 30' N 43° 15'  
SCALE: 1" = 1 MILE

Pin # 00R234



PARCEL	GRANTOR	NATURE OF TITLE	DATE	TOWN	RECORDING DATA VOL.	PAGE	DATE	REMARKS
1, A, B, C	ROBERT A. & MARY W. LA FOUNTAIN KONSTANTE BIRSKY OTTAN BIRSKY	W.D.	11-20-56	SPRINGFIELD	56	221	11-26-56	SEE SPRINGFIELD ST 123 U
2	ALPHONSE BIRSKY	COND.	10-13-55	SPRINGFIELD	4	260-264	10-14-55	SEE SPRINGFIELD F 123 (2)
4	CLARE J. PARKER	W.D.O.E.	2-28-55	SPRINGFIELD	5	8	3-19-56	SLOPE & DRAINAGE RIGHTS
5	BENSON G. & EDNA L. SANBORN	W.D.O.E.	3-13-56	SPRINGFIELD	5	14	3-23-56	
5	EVERETT S. & ALICE E. MORSE	W.D.	9-9-55	SPRINGFIELD	56	58	1-7-56	SEE SHEET 9

BM# 14 SPOT ON CONC WALL 5' LT STA 67+50 EL. 444.34  
 BM# 15 SPOT ON EDGE 13' RT STA 70+80 EL. 437.69  
 TBM SPOT ON LEGS 24' RT STA 72+70 EL. 440.26

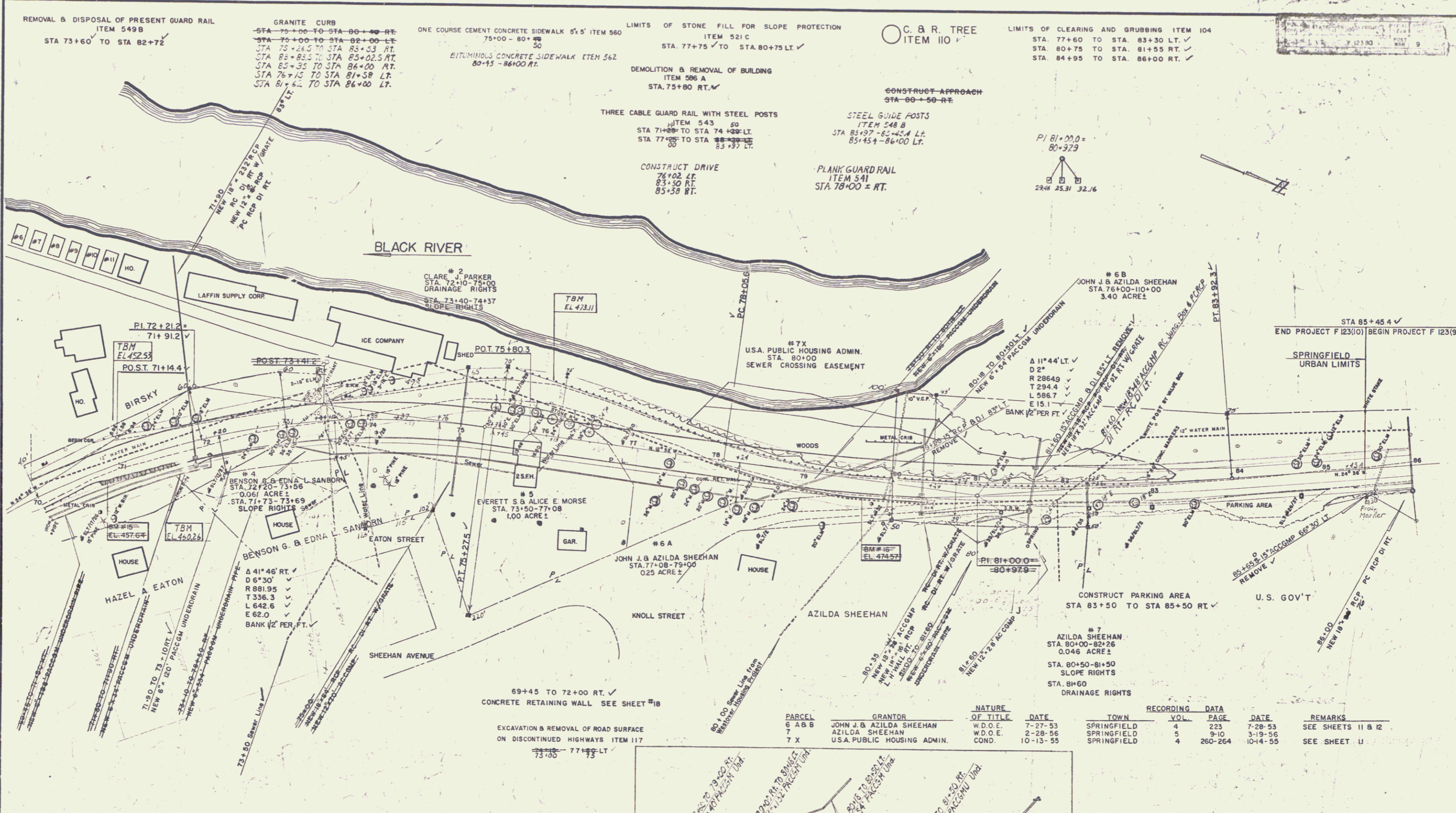


WIDENING OF RIVER ST. & DISCONTINUANCE  
ST. PROJ. 123N

SHEET 8A

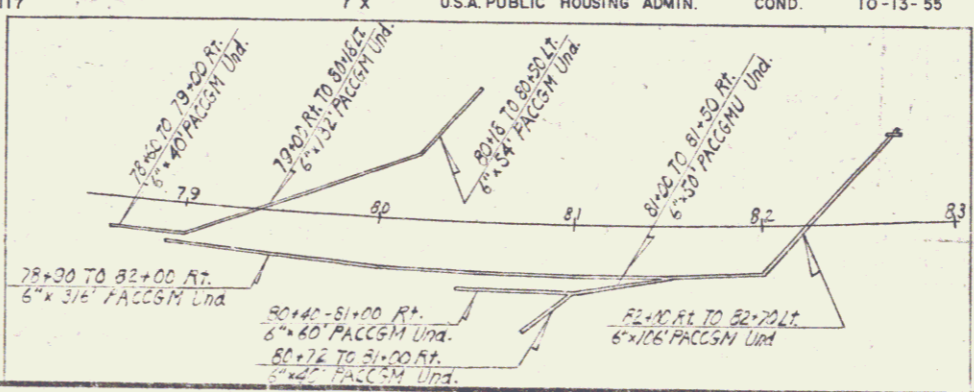
3





Government Non-Participation  
The Cost of Trench Excavation of Earth Item 103A for the Sewer at Sta. 73+50 shall be paid for by the State of Vermont as a Government Non-Participating Item.

PARCEL	GRANTOR	NATURE OF TITLE	DATE	TOWN	VOL.	PAGE	DATE	REMARKS
6 A B B	JOHN J. & AZILDA SHEEHAN	W.D.O.E.	7-27-53	SPRINGFIELD	4	223	7-28-53	SEE SHEETS 11 & 12
7	AZILDA SHEEHAN	W.D.O.E.	2-28-56	SPRINGFIELD	5	9-10	3-19-56	
7 X	U.S.A. PUBLIC HOUSING ADMIN.	COND.	10-13-55	SPRINGFIELD	4	260-264	10-14-55	SEE SHEET 11



THE CLARKESON ENGINEERING CO., INC.  
CONSULTING ENGINEERS  
BOSTON MASSACHUSETTS

SPRINGFIELD  
SURVEYED BY: POGAR 6/53  
PLOTTED BY: JR. 7/53  
TRACED BY: JR. 7/53  
PROJECT F NO. 123(9)  
**SHEET 9**

LIMITS OF CLEARING AND GRUBBING ITEM 104  
STA. 86+00 TO STA. 87+50 RT. ✓

CONSTRUCT DRIVE  
STA. 88+30 LT.  
STA. 88+50 RT. ✓  
STA. 90+70 RT. ✓  
STA. 97+80 RT. ✓

CONSTRUCT APPROACH  
STA. 91+40 RT. ✓

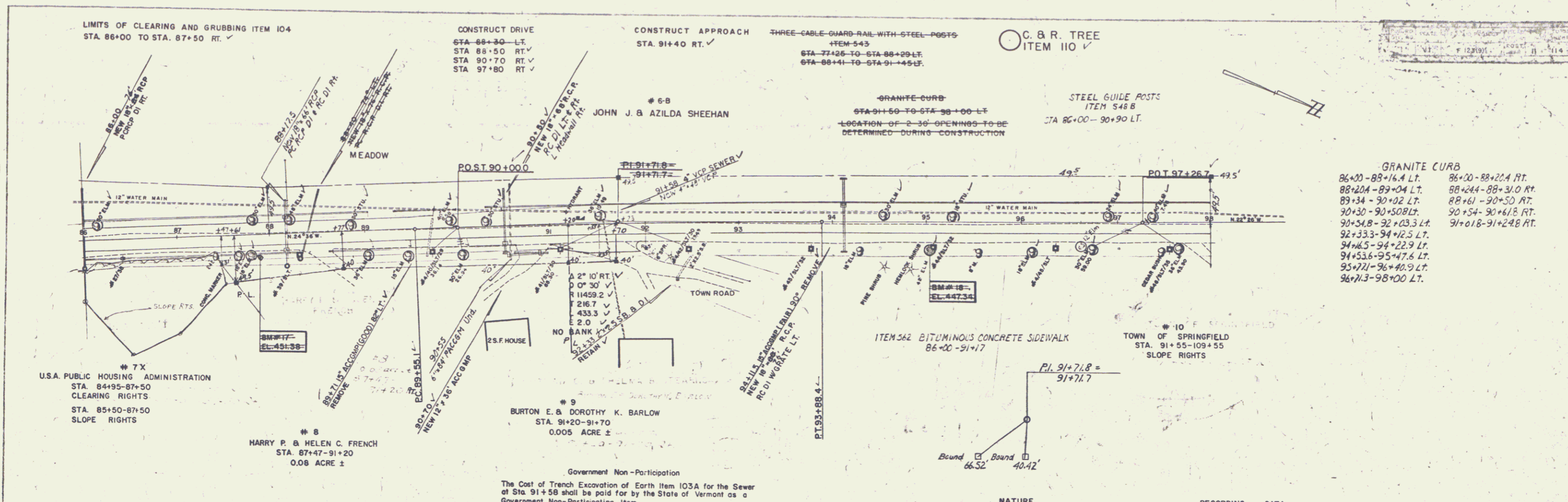
THREE-CABLE GUARD-RAIL WITH STEEL POSTS  
ITEM 543  
STA. 77+25 TO STA. 88+29 LT.  
STA. 88+41 TO STA. 91+45 LT.

C. & R. TREE  
ITEM 110 ✓

STEEL GUIDE POSTS  
ITEM 548 B  
STA. 80+00 - 90+90 LT.

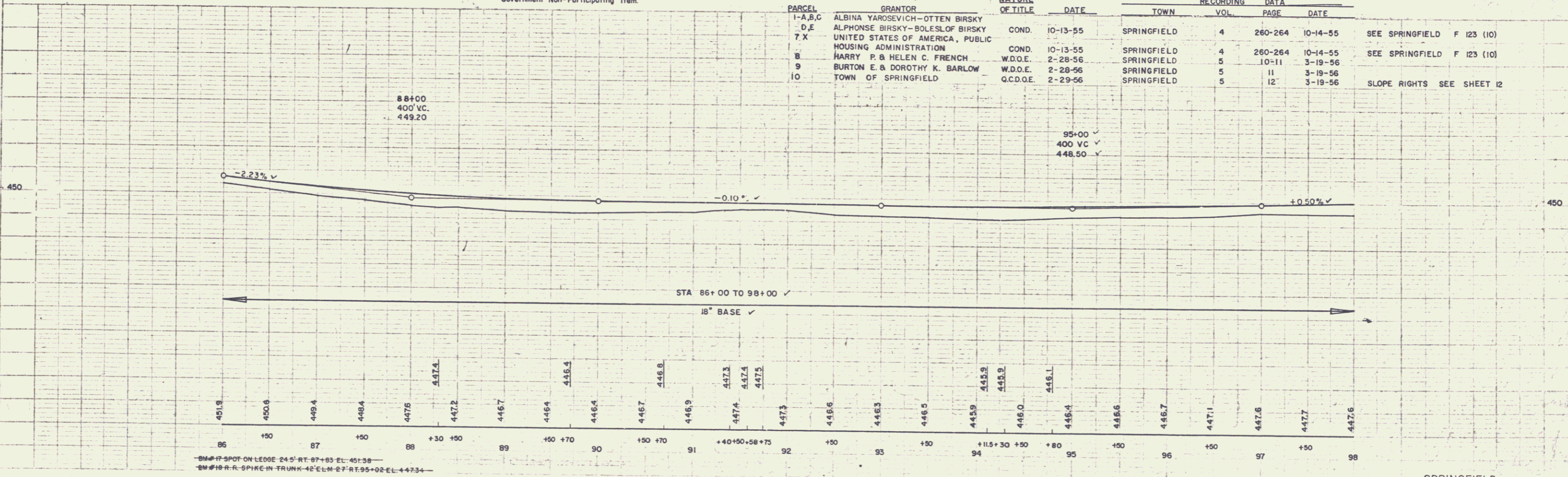
GRANITE CURB  
86+00 - 88+14.4 LT.  
88+204 - 89+04 LT.  
89+34 - 90+02 LT.  
90+30 - 90+50.8 LT.  
90+54.8 - 92+03.3 LT.  
92+33.3 - 94+22.9 LT.  
94+53.6 - 95+47.6 LT.  
95+77.1 - 96+48.9 LT.  
96+71.3 - 98+00 LT.  
86+00 - 88+20.4 RT.  
88+24.4 - 88+31.0 RT.  
88+61 - 90+50 RT.  
90+54 - 90+61.8 RT.  
91+01.8 - 91+24.8 RT.

PLAN  
DATE  
SCALE  
BY  
CHECKED  
APPROVED  
TRACES



Government Non-Participation  
The Cost of Trench Excavation of Earth Item 103A for the Sewer at Sta. 91+58 shall be paid for by the State of Vermont as a Government Non-Participating Item.

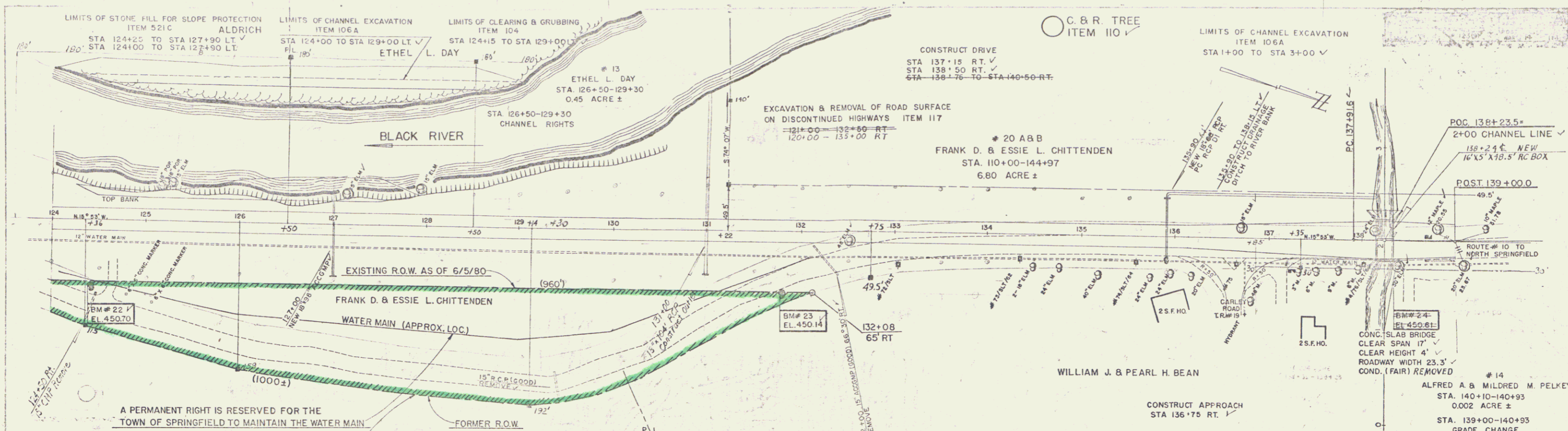
PARCEL	GRANTOR	NATURE OF TITLE	DATE	TOWN	RECORDING VOL.	DATA PAGE	DATE	
1-A,B,C	ALBINA YAROSEVICH-OTTEN BIRSKY							
D,E	ALPHONSE BIRSKY-BOLESLOF BIRSKY	COND.	10-13-55	SPRINGFIELD	4	260-264	10-14-55	SEE SPRINGFIELD F 123 (10)
7 X	UNITED STATES OF AMERICA, PUBLIC HOUSING ADMINISTRATION							
8	HARRY P. & HELEN C. FRENCH	COND.	10-13-55	SPRINGFIELD	4	260-264	10-14-55	SEE SPRINGFIELD F 123 (10)
9	BURTON E. & DOROTHY K. BARLOW	W.D.O.E.	2-28-56	SPRINGFIELD	5	10-11	3-19-56	
10	TOWN OF SPRINGFIELD	W.D.O.E.	2-28-56	SPRINGFIELD	5	11	3-19-56	
		Q.C.D.O.E.	2-29-56	SPRINGFIELD	5	12	3-19-56	SLOPE RIGHTS SEE SHEET 12



SPRINGFIELD  
THE CLARKESON ENGINEERING CO., INC.  
CONSULTING ENGINEERS  
BOSTON MASSACHUSETTS  
SHEET 11 OF 114

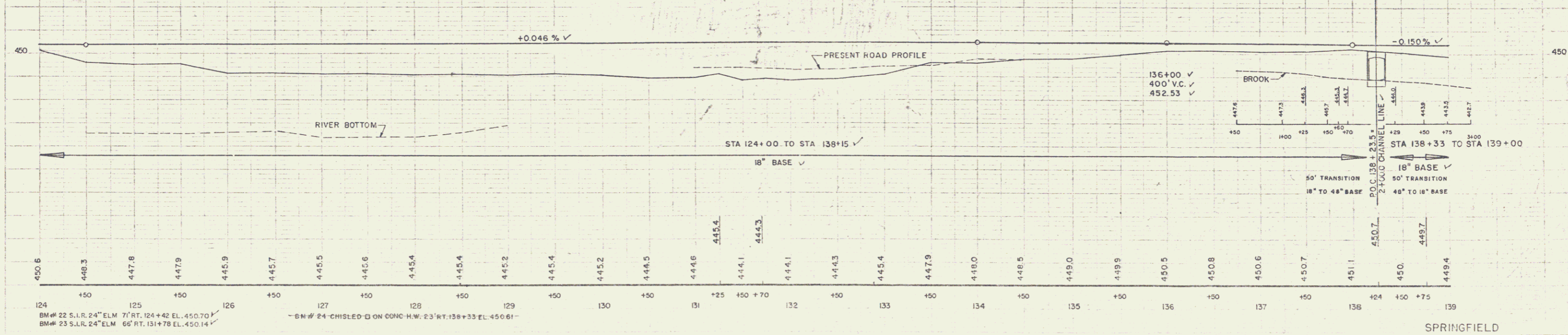






PARCEL	GRANTOR	NATURE OF TITLE	DATE	TOWN	VOL.	PAGES	DATE	RECORDING DATA
13	ETHEL L. DAY	COND.	10-13-55	SPRINGFIELD	4	260-264	10-14-55	CHANNEL RIGHTS
20 A, B	FRANK D. & ESSIE L. CHITTENDEN	W. D.	10-2-53	SPRINGFIELD	53	388-399	10-9-53	CULVERT RIGHTS - SEE SHEET 13, 15
C, D	ALFRED A. & MILDRED M. PELKEY	W. D. O. E.	9-21-56	SPRINGFIELD	56	203-204	10-11-56	GRADE CHANGE - SEE SHEET 15

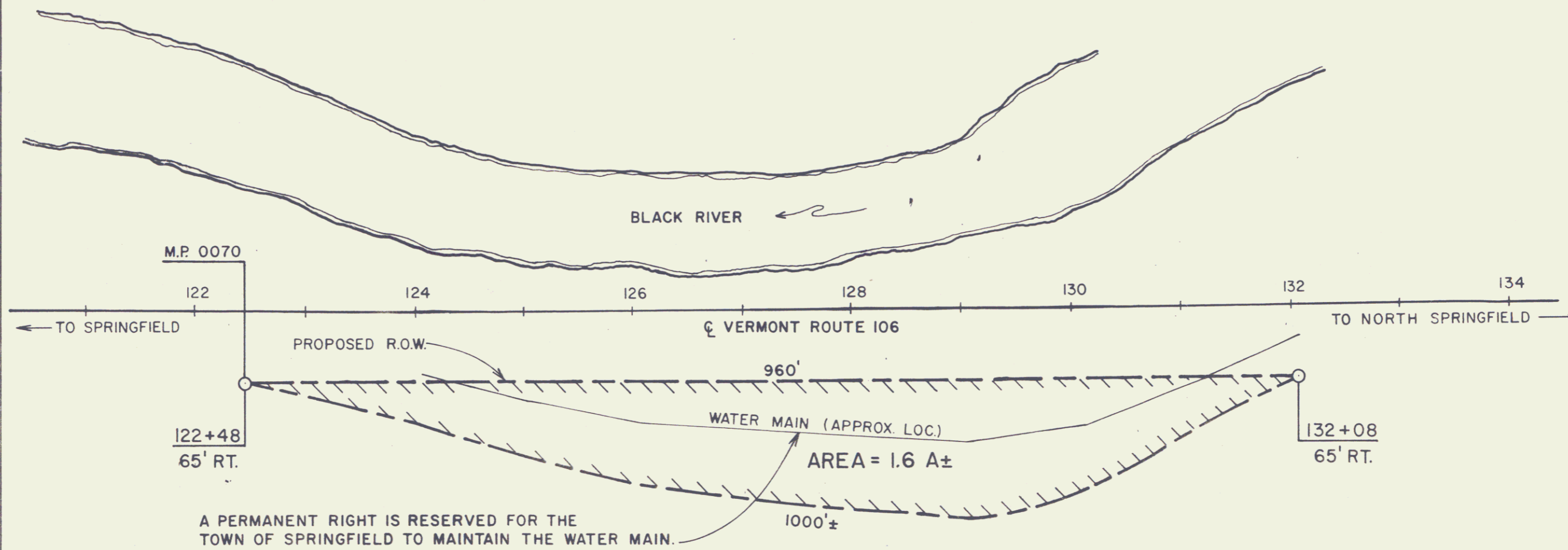
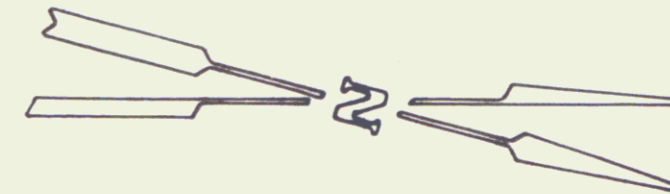
NOTE: STATE OF VT. TO JOSEPH CERNIGLIA  
 BY Q.C.D. DATED 4/9/80 AND RECORDED  
 ON JUNE 5, 1980 IN BOOK 77 PG. 584 IN  
 THE SPRINGFIELD LAND RECORDS.



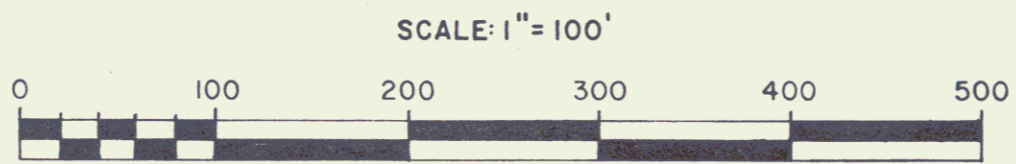
BM# 22 S.I.R. 24" ELM 7' RT. 124+42 EL. 450.70  
 BM# 23 S.I.R. 24" ELM 66' RT. 131+78 EL. 450.14  
 BM# 24 CHISEL D ON CONC. H.W. 23' RT. 138+33 EL. 450.61

CONSISTING OF LAND PARTLY ACQUIRED FROM FRANK D. & ESSIE L. CHITTENDEN  
 BY W.D. DATED OCT. 2, 1953 & RECORDED IN BK. 53 PGS. 388-389 ON OCT. 9, 1953  
 AND PARTLY FROM THE EXISTING R.O.W. PRIOR TO THE HIGHWAY RELOCATION.

ST. OF VT TO JOSEPH CERNIGLIA BY QCD  
 ON 4/9/80 AND IN BK 77/584  
 MP 0070



A PERMANENT RIGHT IS RESERVED FOR THE  
 TOWN OF SPRINGFIELD TO MAINTAIN THE WATER MAIN.



REF. SHEET 13,14 OF 114 <i>VT 106</i>		
STATE OF VERMONT		
AGENCY OF TRANSPORTATION		
SHEET <i>14A</i>		
TOWN OF SPRINGFIELD		
PROJECT	F 123 (9)	<i>10</i>
APPROX SCALE 1"=100'	DATE 4/2/80	DRAWN BY B.A.M.

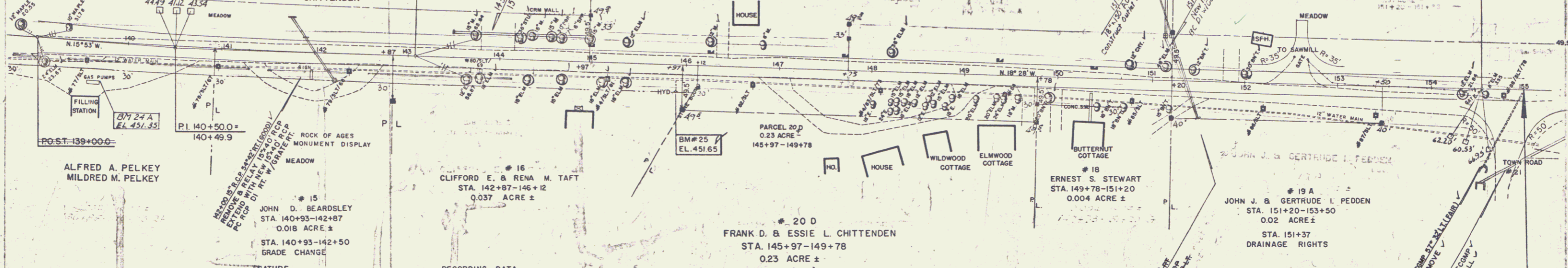
123

CONSTRUCT DRIVE  
 STA 141+35 RT ✓  
 STA 142+60 RT ✓  
 STA 144+00 LT ✓  
 STA 145+00 RT ✓  
 STA 146+37 LT ✓  
 STA 147+00 RT ✓  
 STA 149+00 RT ✓  
 STA 149+66 RT ✓  
 STA 150+00 RT ✓  
 STA 151+86 LT ✓  
 STA 152+66 LT ✓  
 STA 151+50 RT ✓  
 STA 139+20 RT ✓  
 STA 140+08 RT ✓

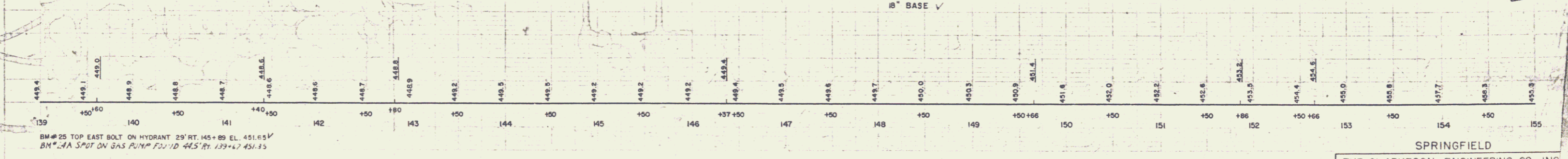
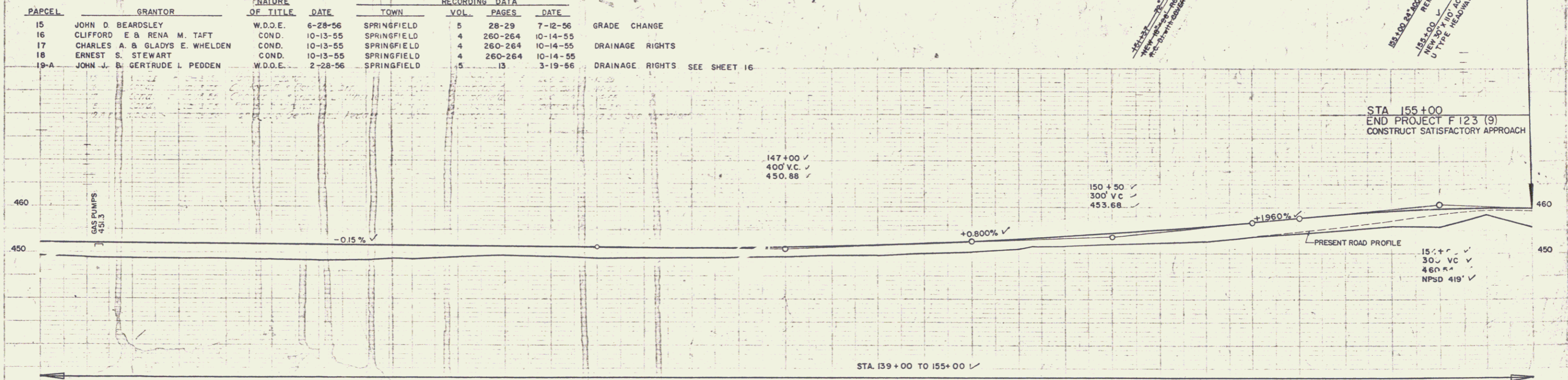
DITUMINOUS CONCRETE CURB  
 ITEM 555  
 139+00 - 139+07 RT  
 139+37 - 139+50 RT  
 140+25 - 141+31 RT  
 141+51 - 142+05 RT  
 142+58.5 - 144+13.5 RT

C. & R. TREE  
 ITEM 110 ✓

CONSTRUCT APPROACH  
 STA 155+00 RT ✓

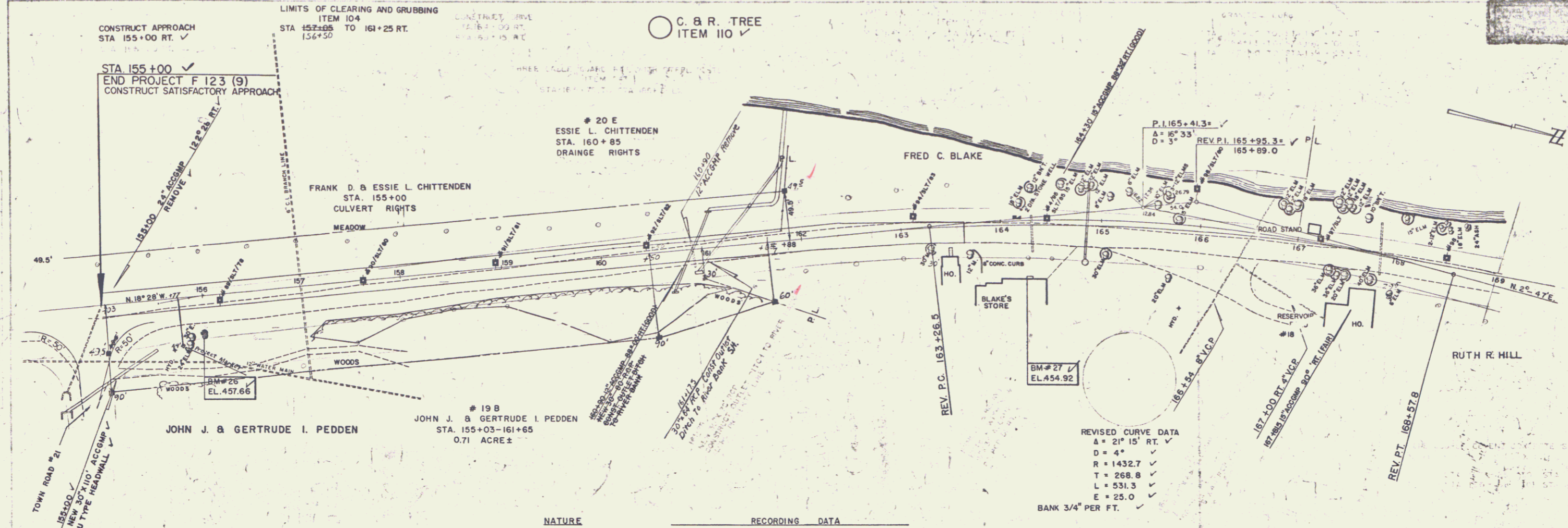


PAPCEL	GRANTOR	NATURE OF TITLE	DATE	TOWN	VOL.	PAGES	DATE	RECORDING DATA
15	JOHN D. BEARDSLEY	W.D.O.E.	6-28-56	SPRINGFIELD	5	28-29	7-12-56	GRADE CHANGE
16	CLIFFORD E. & RENA M. TAFT	COND.	10-13-55	SPRINGFIELD	4	260-264	10-14-55	DRAINAGE RIGHTS
17	CHARLES A. & GLADYS E. WHELDEN	COND.	10-13-55	SPRINGFIELD	4	260-264	10-14-55	DRAINAGE RIGHTS
18	ERNEST S. STEWART	COND.	10-13-55	SPRINGFIELD	4	260-264	10-14-55	DRAINAGE RIGHTS
19-A	JOHN J. & GERTRUDE L. PEDDEN	W.D.O.E.	2-28-56	SPRINGFIELD	5	13	3-19-56	DRAINAGE RIGHTS SEE SHEET 16



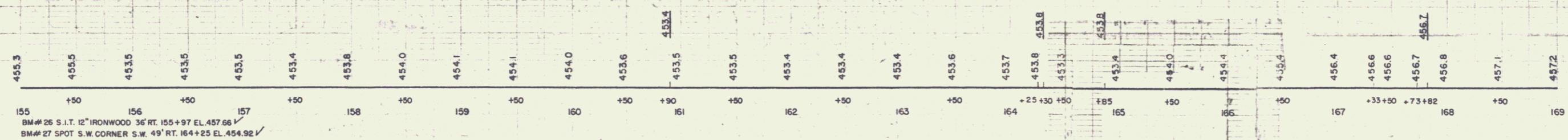
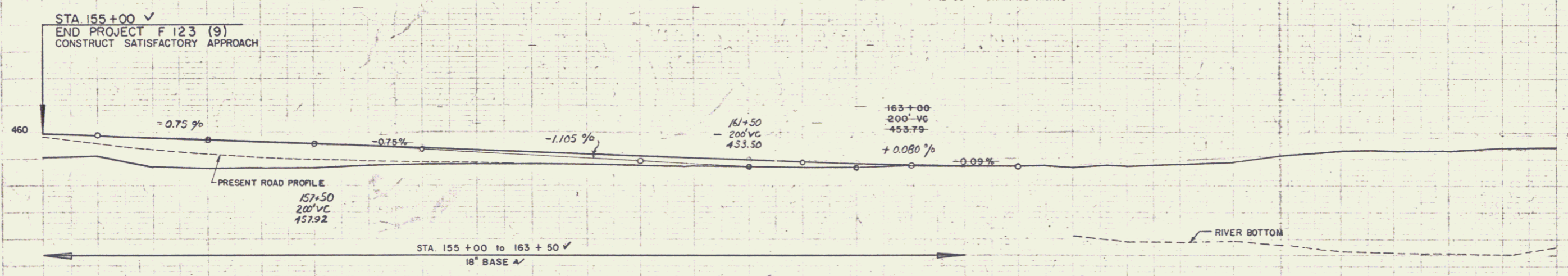
BM# 25 TOP EAST BOLT ON HYDRANT 29' RT. 145+89 EL. 451.85 ✓  
 BM# 24 SPOT ON GAS PUMP 22' 10" RT. 139+67 EL. 451.35 ✓

SPRINGFIELD  
 THE CLARKESON ENGINEERING CO., INC.  
 CONSULTING ENGINEERS  
 BOSTON MASSACHUSETTS  
 SHEET 15 OF 114



REVISED CURVE DATA  
 Δ = 21° 15' RT. ✓  
 D = 4'  
 R = 1432.7'  
 T = 268.8'  
 L = 531.3'  
 E = 25.0'  
 BANK 3/4" PER FT.

PARCEL	GRANTOR	NATURE OF TITLE	DATE	TOWN	RECORDING VOL.	DATA PAGES	DATE	NOTES
19 B	JOHN J. & GERTRUDE I. PEDDEN	W.D.O.E.	2-28-56	SPRINGFIELD	5	13	3-19-56	SEE SHEET 15
20 E	ESSIE L. CHITTENDEN	W.D.O.E.	6-27-56	SPRINGFIELD	5	27-28	7-12-56	DRAINAGE RIGHTS



SPRINGFIELD  
 THE CLARKSON ENGINEERING CO., INC.  
 CONSULTING ENGINEERS  
 BOSTON MASSACHUSETTS

