

REMOVAL & DISPOSAL OF PRESENT GUARD RAIL
ITEM 549B
STA 73+60 TO STA 82+72

GRANITE CURB
STA 75+00 TO STA 80+00 RT.
STA 75+00 TO STA 82+00 LT.
STA 85+25 TO STA 85+02.5 RT.
STA 85+35 TO STA 86+00 RT.
STA 86+15 TO STA 86+00 LT.

ONE COURSE CEMENT CONCRETE SIDEWALK 5'x5' ITEM 560
75+00 - 80+00
BITUMINOUS CONCRETE SIDEWALK ITEM 562
80+15 - 86+00 RT.

LIMITS OF STONE FILL FOR SLOPE PROTECTION
ITEM 521C
STA. 77+75 TO STA. 80+75 LT. ✓

DEMOLITION & REMOVAL OF BUILDING
ITEM 596 A
STA. 75+80 RT. ✓

THREE CABLE GUARD RAIL WITH STEEL POSTS
ITEM 543
STA 71+00 TO STA 74+00 LT.
STA 77+00 TO STA 83+37 RT.

CONSTRUCT DRIVE
76+02 LT.
83+30 RT.
85+58 RT.

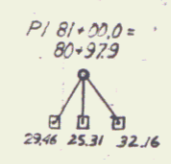
C. & R. TREE
ITEM 110

STEEL GUIDE POSTS
STA 83+97 - 85+42.4 LT.
85+45.4 - 86+00 LT.

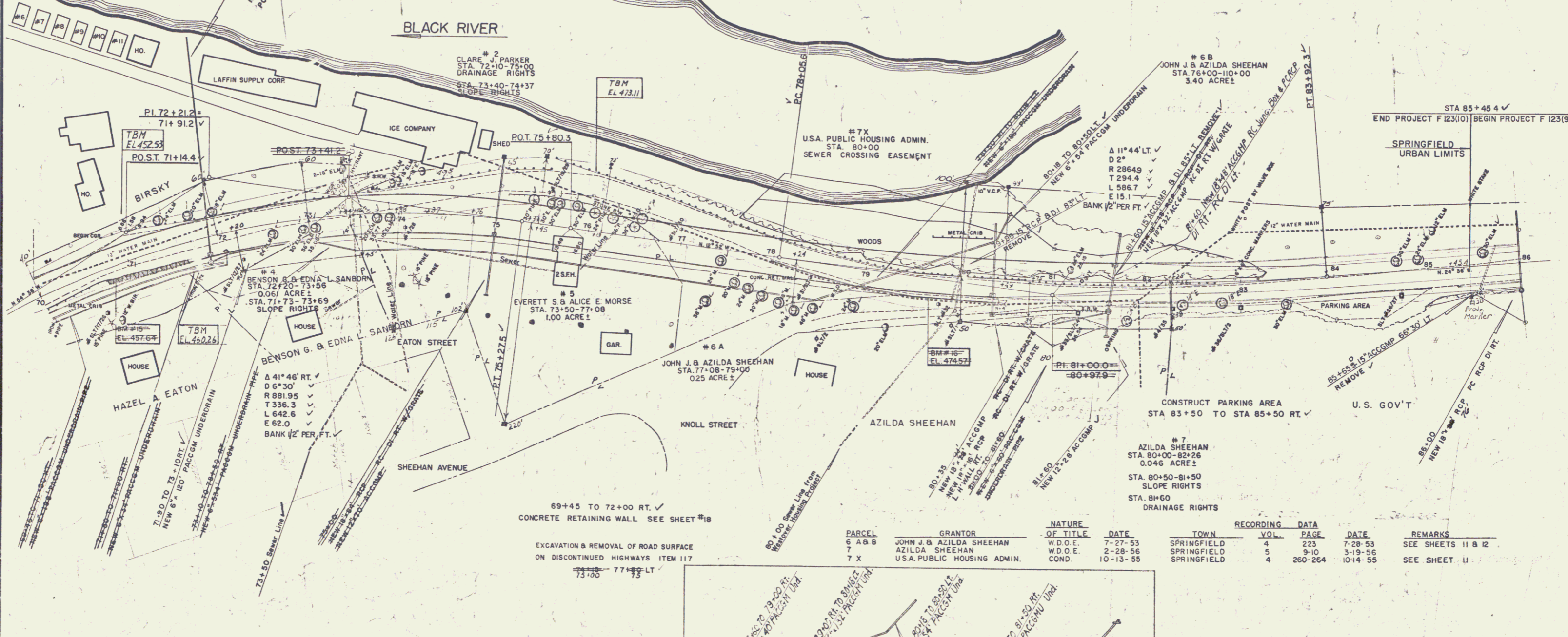
PLANK GUARD RAIL
ITEM 541
STA 78+00 ± RT.

LIMITS OF CLEARING AND GRUBBING ITEM 104
STA. 77+60 TO STA. 83+30 LT. ✓
STA. 80+75 TO STA. 81+55 RT. ✓
STA. 84+95 TO STA. 86+00 RT. ✓

CONSTRUCT APPROACH
STA 80+50 RT.



DATE	DESCRIPTION
1230	WAR 9



REMOVAL & DISPOSAL OF PRESENT GUARD RAIL
ITEM 549B
STA 73+60 TO STA 82+72

GRANITE CURB
STA 75+00 TO STA 80+00 RT.
STA 75+00 TO STA 82+00 LT.
STA 85+25 TO STA 85+02.5 RT.
STA 85+35 TO STA 86+00 RT.
STA 86+15 TO STA 86+00 LT.

ONE COURSE CEMENT CONCRETE SIDEWALK 5'x5' ITEM 560
75+00 - 80+00
BITUMINOUS CONCRETE SIDEWALK ITEM 562
80+15 - 86+00 RT.

LIMITS OF STONE FILL FOR SLOPE PROTECTION
ITEM 521C
STA. 77+75 TO STA. 80+75 LT. ✓

DEMOLITION & REMOVAL OF BUILDING
ITEM 596 A
STA. 75+80 RT. ✓

THREE CABLE GUARD RAIL WITH STEEL POSTS
ITEM 543
STA 71+00 TO STA 74+00 LT.
STA 77+00 TO STA 83+37 RT.

CONSTRUCT DRIVE
76+02 LT.
83+30 RT.
85+58 RT.

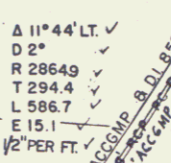
C. & R. TREE
ITEM 110

STEEL GUIDE POSTS
STA 83+97 - 85+42.4 LT.
85+45.4 - 86+00 LT.

PLANK GUARD RAIL
ITEM 541
STA 78+00 ± RT.

LIMITS OF CLEARING AND GRUBBING ITEM 104
STA. 77+60 TO STA. 83+30 LT. ✓
STA. 80+75 TO STA. 81+55 RT. ✓
STA. 84+95 TO STA. 86+00 RT. ✓

CONSTRUCT APPROACH
STA 80+50 RT.



DATE	DESCRIPTION
1230	WAR 9

Government Non-Participation
The Cost of Trench Excavation of Earth Item 103A for the Sewer at Sta. 73+50 shall be paid for by the State of Vermont as a Government Non-Participating Item.

PARCEL	GRANTOR	NATURE OF TITLE	DATE	TOWN	VOL.	PAGE	DATE	REMARKS
6 A B B	JOHN J. & AZILDA SHEEHAN	W.D.O.E.	7-27-53	SPRINGFIELD	4	223	7-28-53	SEE SHEETS 11 & 12
7	AZILDA SHEEHAN	W.D.O.E.	2-28-56	SPRINGFIELD	5	9-10	3-19-56	
7 X	U.S.A. PUBLIC HOUSING ADMIN.	COND.	10-13-55	SPRINGFIELD	4	260-264	10-14-55	SEE SHEET 11

SPRINGFIELD
SURVEYED BY: POGAR 6/53
PLOTTED BY: JR. 7/53
TRACED BY: JR. 7/53
PROJECT F NO. 123(9)

THE CLARKESON ENGINEERING CO., INC.
CONSULTING ENGINEERS
BOSTON MASSACHUSETTS

SHEET 9