

STANDARD STRUCTURE SHEET 3.20: PIPE CULVERTS
 " " " 3.29: BOX CULVERTS
 " " " 3.30: STANDARD UNDERPASS & GUARD RAIL
 " " " 3.40: BRIDGES, SIGNS & LIGHTS

STATE HIGHWAY DEPARTMENT

PLAN AND PROFILE OF PROPOSED STATE HIGHWAY

FEDERAL AID PROJECT

TOWNS OF FAIRFAX AND GEORGIA

FAIRFAX-ST. ALBANS ROAD

BEGINNING AT A POINT 0.739 MILES SOUTHEASTERLY OF THE FAIRFAX-GEORGIA TOWN LINE AND EXTENDING NORTHWESTERLY 0.899 MILES TO THE GEORGIA-FAIRFAX TOWN LINE...

LENGTH OF PROJECT: 4748.9 FEET = 0.899 MILE



Pin# 00R233
 Rte. VT-104
 Project FAP 138-E
 Date 7/26/1956

STANDARD STRUCTURE SHEET APPROVED BY THE CHIEF ENGINEER
 3.20 JULY 11, 1933
 3.29 JULY 11, 1933
 3.30 AUG. 13, 1933



APPROVED: July 26, 1956
 [Signature]
 SUBMITTED BY ORDER OF THE

CONVENTIONAL SIGNS

- — — — — GROUND ELEVATION
- — — — — GRADE ELEVATION
- — — — — PROPERTY
- — — — — ROAD
- — — — — TANGENT
- — — — — CURVE
- — — — — POINT OF INTERSECTION
- — — — — POINT OF TANGENT
- — — — — POINT ON TANGENT

- #### CURVE DATA
- DEFLECTION ANGLE Δ
 - DEGREE OF CURVE D
 - RADIUS OF CURVE R
 - TANGENT DISTANCE T
 - LENGTH OF CURVE L
 - EXTERNAL DISTANCE E
 - POINT OF INTERSECTION P. I.
 - POINT OF CURVE P. C.
 - POINT OF TANGENT P. T.
 - POINT ON TANGENT P. O. T.

| Scales | |
|----------------|-----------|
| TITLE | 1" = 500' |
| TRUCK | 1" = 2' |
| RAIL | 1" = 50' |
| PROF. | 1" = 30' |
| 1:100 | 1" = 10' |
| CROSS SECTIONS | 1" = 5' |

These plans are subject to such revisions as may be required by the Bureau of Public Roads or the Commissioner of Highways. Construction is to be carried on in accordance with the plans and Standard Road & Bridge Specifications of 1930 including all subsequent approved revisions and such revised specifications and special provisions as are submitted with the plans.

RECOMMENDED
 RECOMMENDED FOR APPROVAL
 APPROVED

Contract: [Signature]
 [Signature]
 SERIES F.A.P. NO. []
 SHEET 1 OF 1

CURVE
 Δ 79°-23'1"
 R 0'
 T 716.0
 L 124.4
 L 242.3
 L 70.4

091+11 LT Stone Fill is to be made from boulders encountered on the project

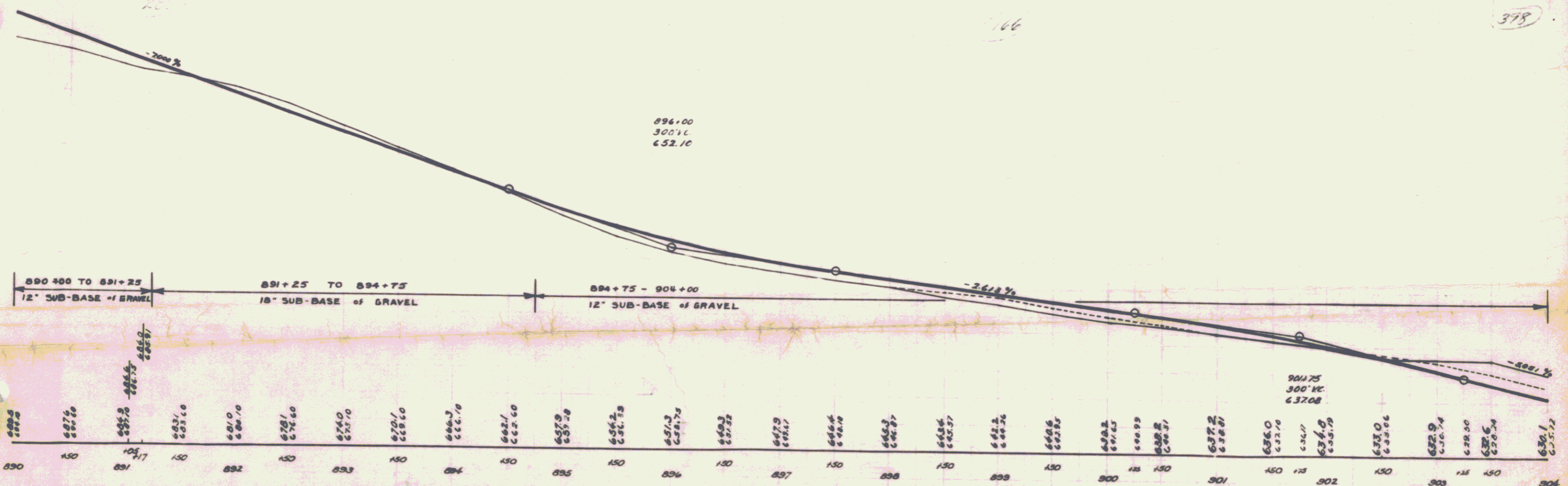
8 1/2" x 4" x 4" Good Cond. Redwood Extend 8 FT 4 1/2" LT with 18" CG MAPLE D.I. @ Top RT (Sheet 328)

8 M[#] 47
 18" Maple
 Elev. 676.17

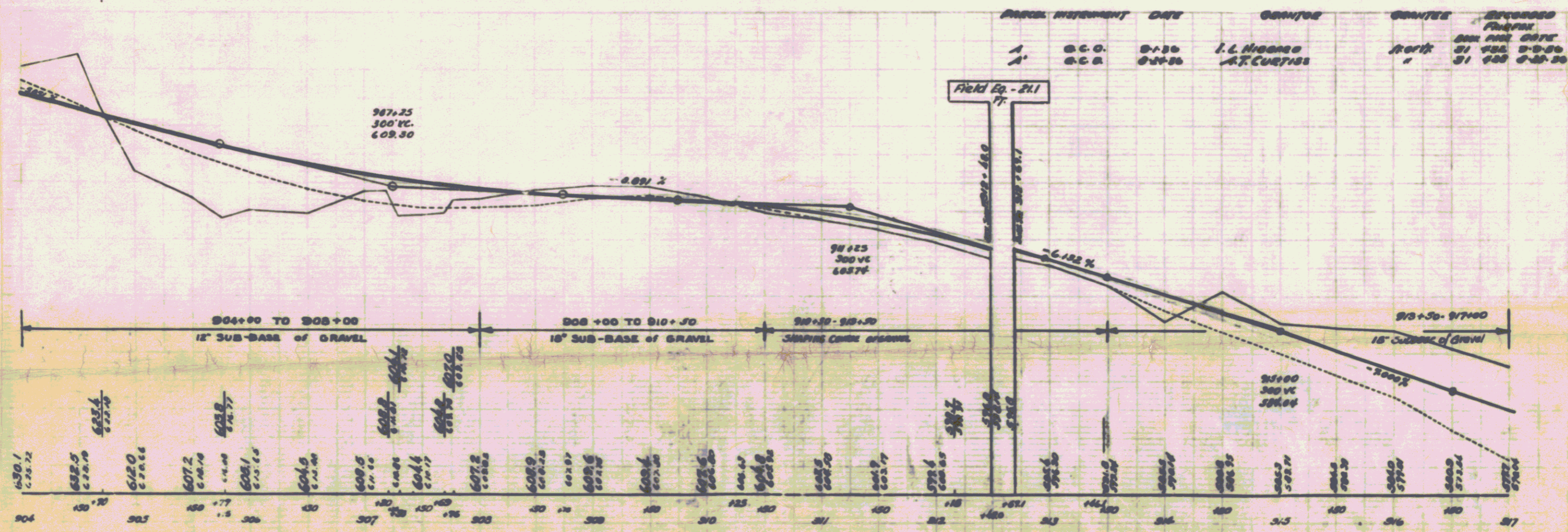
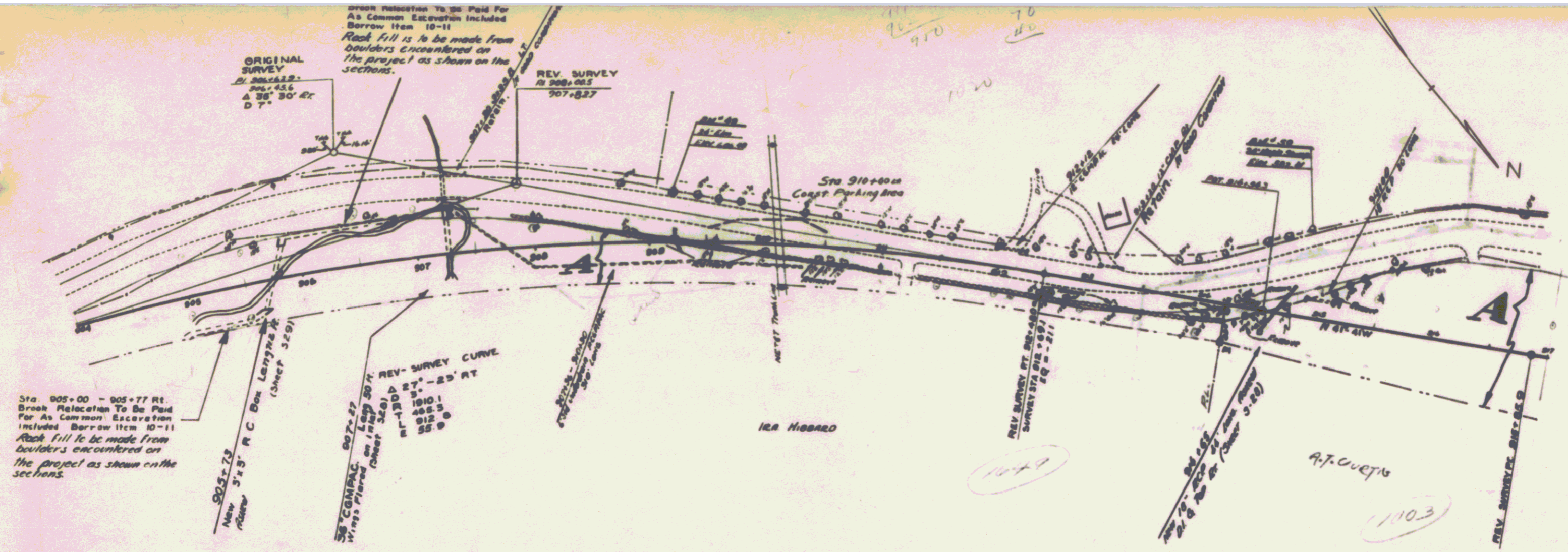
Sta 899+00.15
 Const. Parking Area on Old Road

ORG. SURV.
 P.I. 891+58.2
 S.D. 148.3
 Δ 0°-0'47"
 D 2°-50'
 REL. SURV. I.R.A. HIBBARD
 207 201+00.9

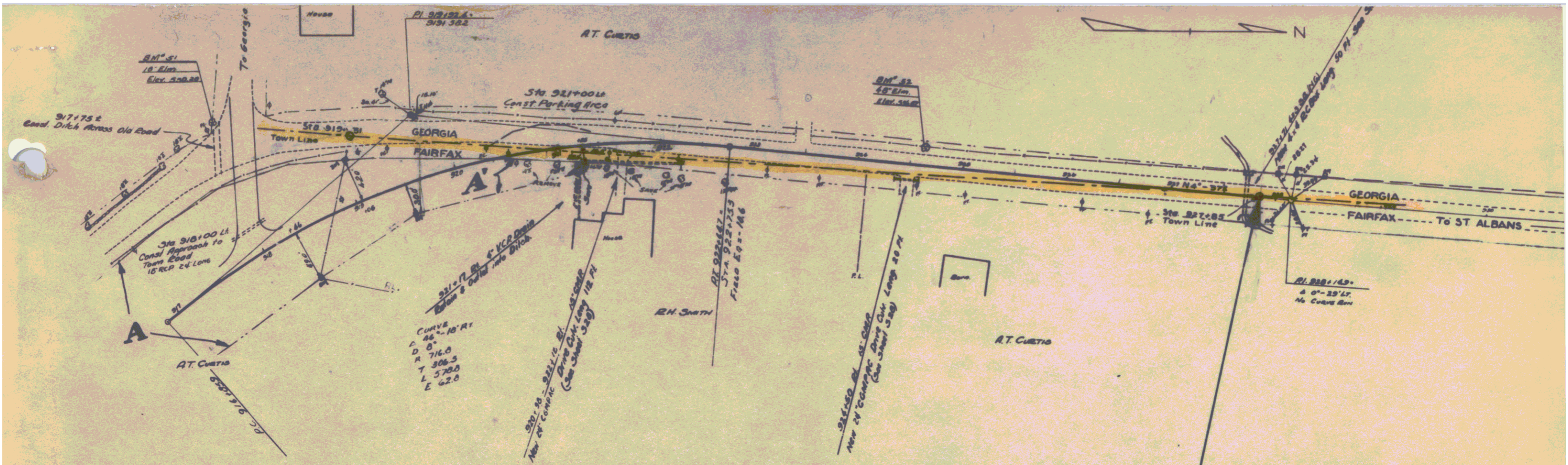
| PARCEL | INSTRUMENT | DATE | GRANTOR | GRANTEE | RECORDED |
|--------|------------|--------|---------------------|------------|---------------|
| A | G.C.D. | 9-1-36 | CHAS & JOSEPH SHORE | ST. OF VT. | 31 430 5-8-36 |
| A | G.C.D. | 9-1-36 | J.L. HIBBARD | " | 31 432 9-9-36 |



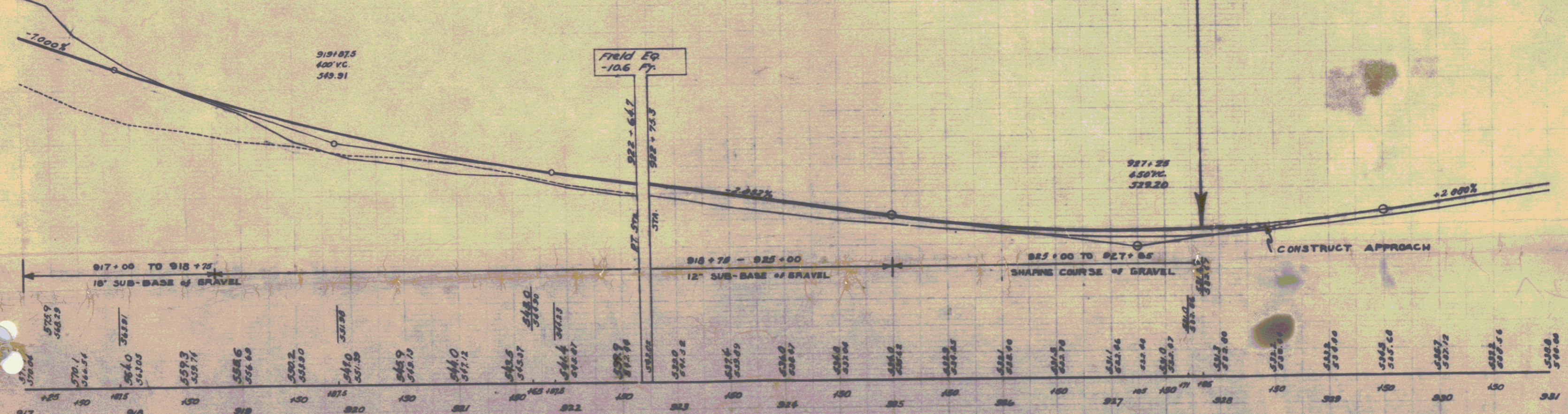
8 M[#] 47 SPIKE IN ROOT OF 18" MAPLE 18' FT LT OF STA. 892+09 ELEV. 676.17
 8 M[#] 48 SPIKE IN ROOT OF 30" MAPLE 17.5 FT RT OF STA. 900+95 ELEV. 637.93



BM #43 SPIKE IN ROOT OF 24' ELM 10 FT LT OF STA 908+00 ELEV. 606.70
 BM #50 SPIKE IN TOP OF 24' MAPLE STUMP 75 FT LT OF STA 917+00 ELEV. 592.4



| PARCEL | INSTRUMENT | DATE | GRANTOR | GRANTEE | SUCCESSOR | REMARKS |
|--------|------------|---------|-----------------|------------|-----------|---------|
| A | O.C.O. | 8-24-36 | A.T. CURTIS | J.R. P. K. | 81 928 | 0-28-96 |
| A' | O.C.O. | 7-1-36 | ROBERT H. SMITH | " | 81 481 | 7-7-36 |



BM 51 SPIKE IN ROOT OF 18' ELM 15 FT. LI. OF 3RD 918+75. ELEV. 558.25
 BM 52 SPIKE IN ROOT OF 48' ELM 16 FT. LI. OF 3RD 924+41. ELEV. 558.07