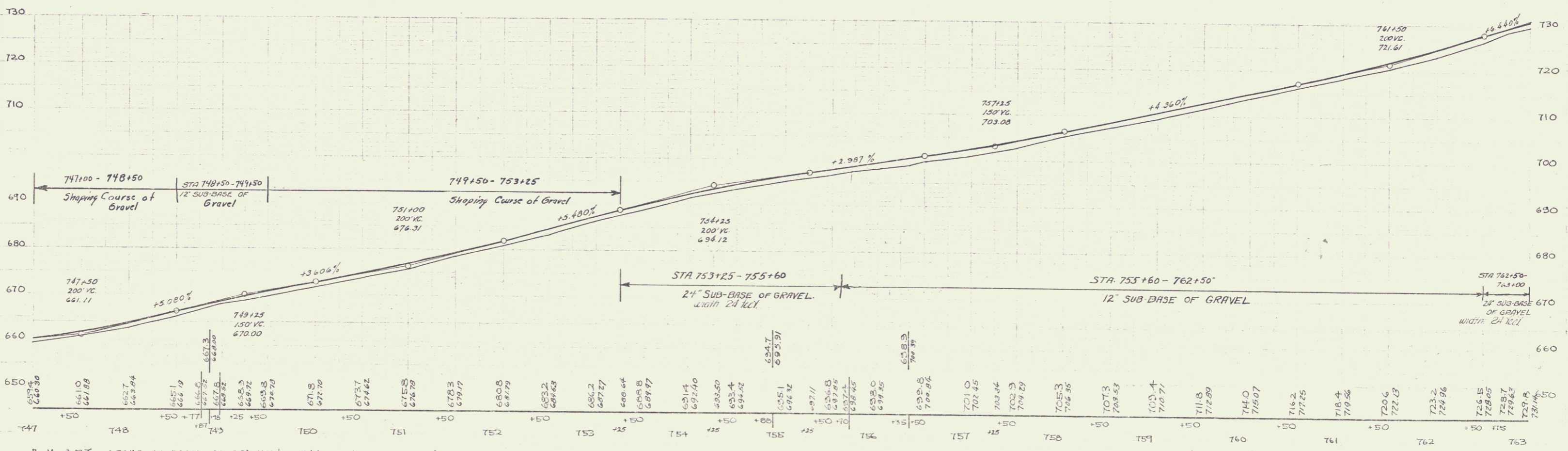
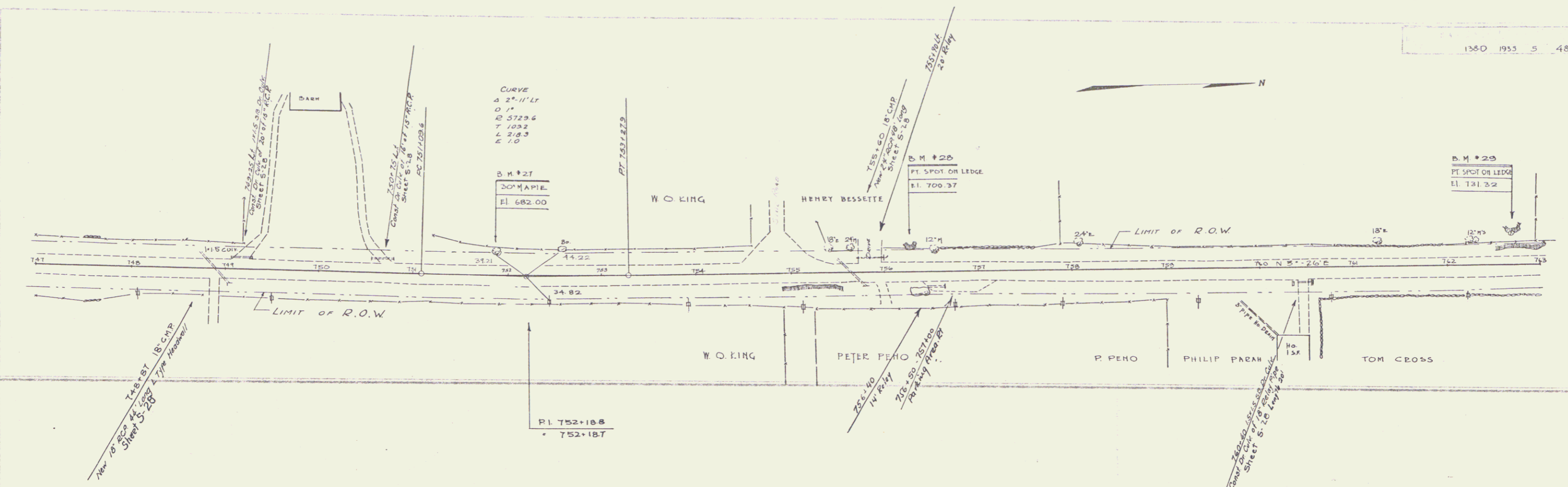


FABRINGTON E/34
D. MACCHI 6/34



B.M. #27 SPIKE IN ROOT OF 30' MAPLE 21' LT. STA 751+85 EL 682.00
 B.M. #28 PAINT SPOT ON LEDGE ON LT 25' OF STA 756+24 EL 700.37
 B.M. #29 PAINT SPOT ON LEDGE ON RT 34' OF STA 762+68 EL 731.32

SERIES FAP NO. 1380
SHEET NO. 5 OF 48

3