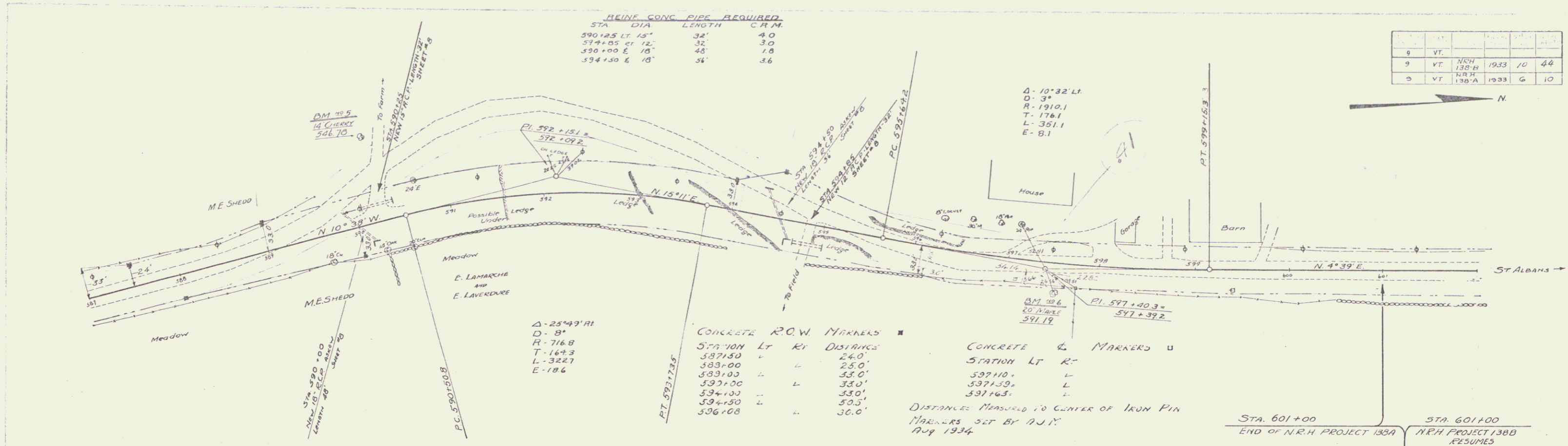


HEAVY CONC. PIPE REQUIRED

STA	DIA	LENGTH	C.M.
590+25 LT 15"	32"	40'	
594+05 RT 12"	32"	30'	
590+00 E 10"	48"	18'	
594+50 E 10"	34"	36'	

NO.	TYPE	DATE	BY	CHKD.
1	VT.			
2	VT.			
3	VT.			



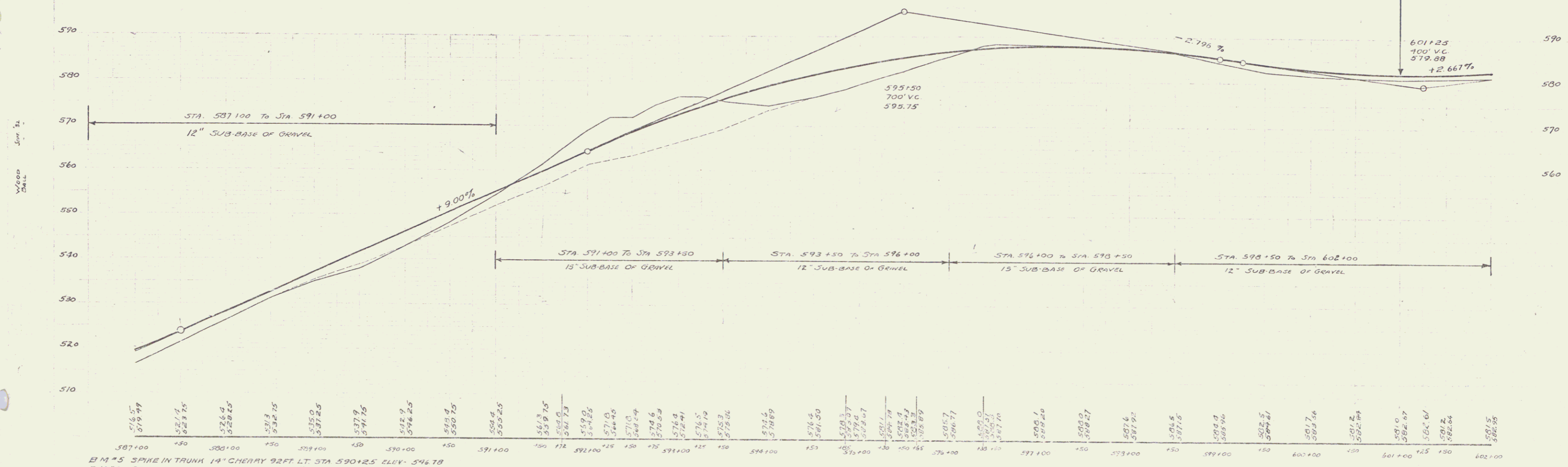
CONCRETE R.O.W. MARKERS

STA	Lt	Rt	DISTANCE
592+00	L	R	24.0'
593+00	L	R	25.0'
594+00	L	R	33.0'
595+00	L	R	33.0'
596+00	L	R	30.0'
596+08	L	R	36.0'

CONCRETE & MARKERS

STATION	Lt	Rt
597+10	L	
597+39	L	
597+63	L	

DISTANCES MEASURED TO CENTER OF IRON PIN  
MARKERS SET BY A.J.N.  
AUG 1934



B.M. #5 SPIKE IN TRUNK 14" CHERRY 92 FT. LT. STA 590+25 ELEV. 546.78  
B.M. #6 SPIKE IN TRUNK 20" MAPLE 25 FT. RT. STA 591+25 ELEV. 591.19

SERIES N.H. No. 138 B  
SHEET 6 OF 44

SERIES N.H. No. 138 A  
SHEET 6 OF 13