

Parcel A.C.D.E. of Date of Grantor Gentes Recorded Remarks  
 Instrument No. 12-5-32 Merion E. Sheild - Stoffa 30 No. 14232

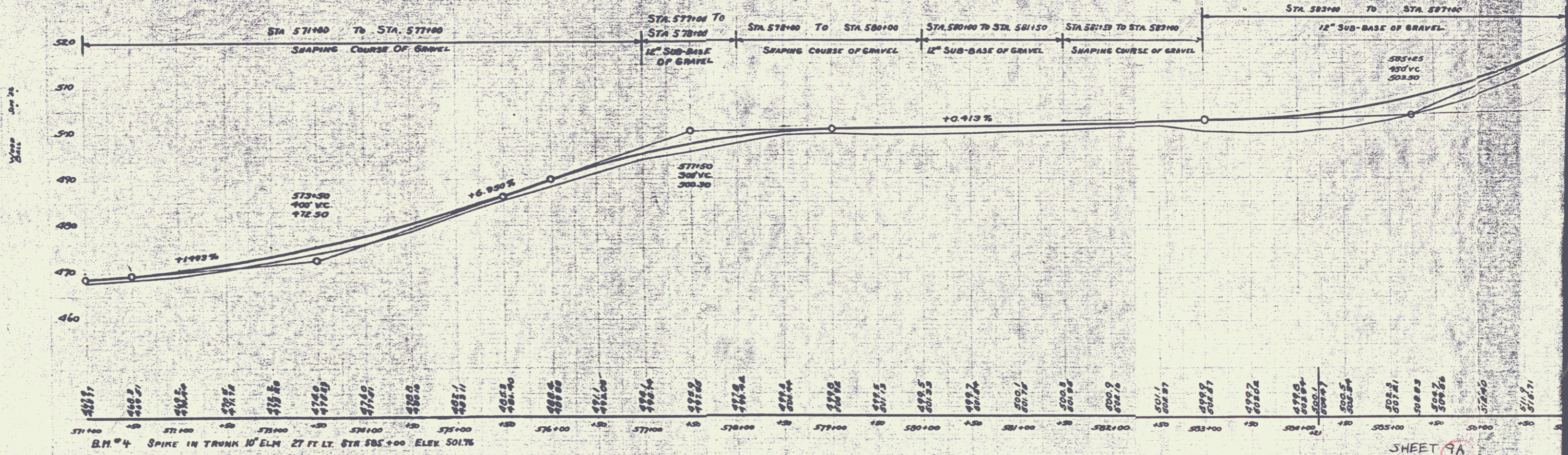
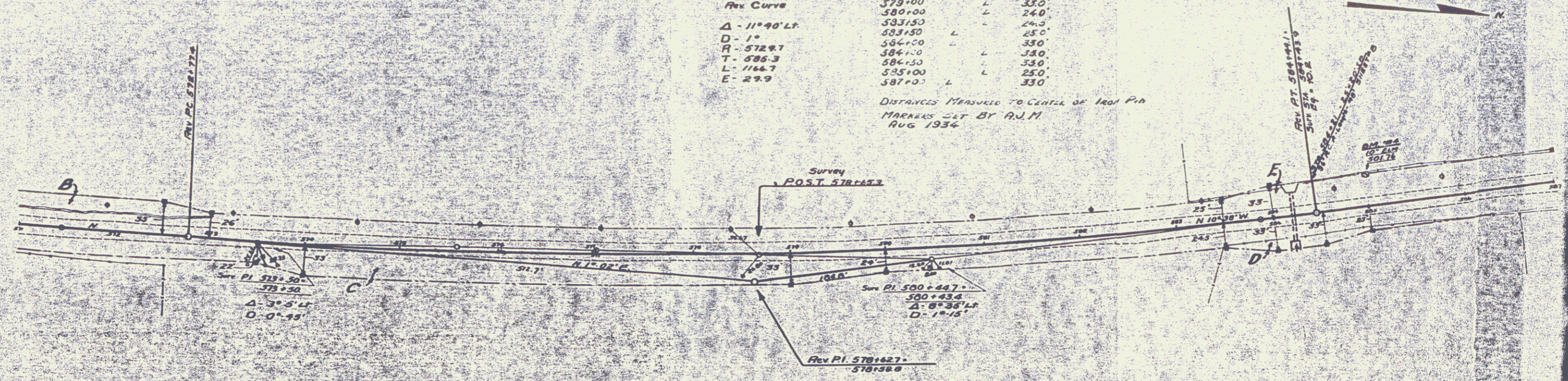
REINFORCING PIPE REQUIRED				
STA.	DIA.	LENG.	CONC. CL. A	STEEL
584+81	36"	40'	40cc	58"

CONCRETE ROW MARKERS			
STATION	Lt	Rt	DISTANCE
572+50	L		350'
573+00	L		260'
573+50	L		220'
574+00	L		330'
579+00	L		350'
580+00	L		240'
583+50	L		245'
584+50	L		250'
584+50	L		330'
584+50	L		330'
585+00	L		250'
587+00	L		330'

REV. CURVE  
 $\Delta = 11^{\circ}40' LT$   
 $D = 15$   
 $R = 572.97$   
 $T = 586.3$   
 $L = 1166.7$   
 $E = 27.9$

DISTANCES MEASURED TO CENTER OF IRON P.I.  
 MARKERS - LT BY R.J.M.  
 AUG 1934

FILE NO.	STATE	PLANS	YEAR	SHEET NO.	TOTAL SHEETS
9	VT.	1132A	1933	5	10



B.M. #4 SPIKE IN TRUNK 10" ELM. 27 FT. LY. STA 585+00 ELEV. 501.76

SHEET 9A

Sheet No. 135 of 10