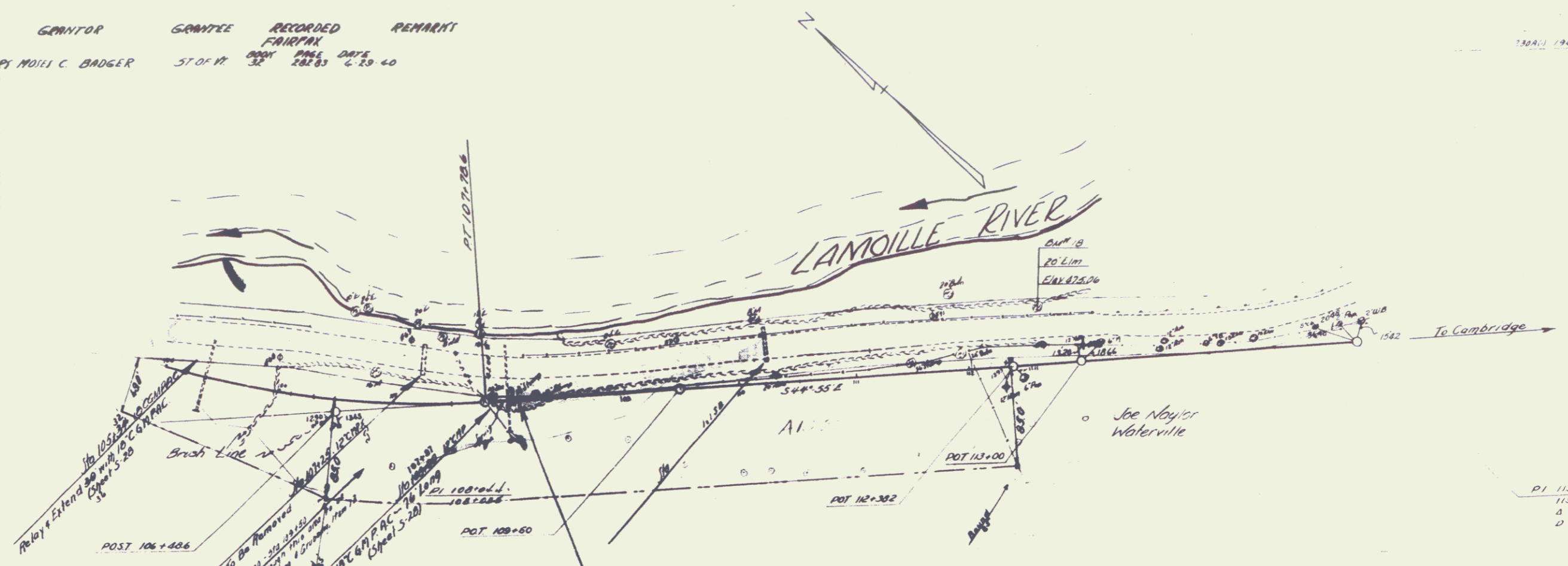


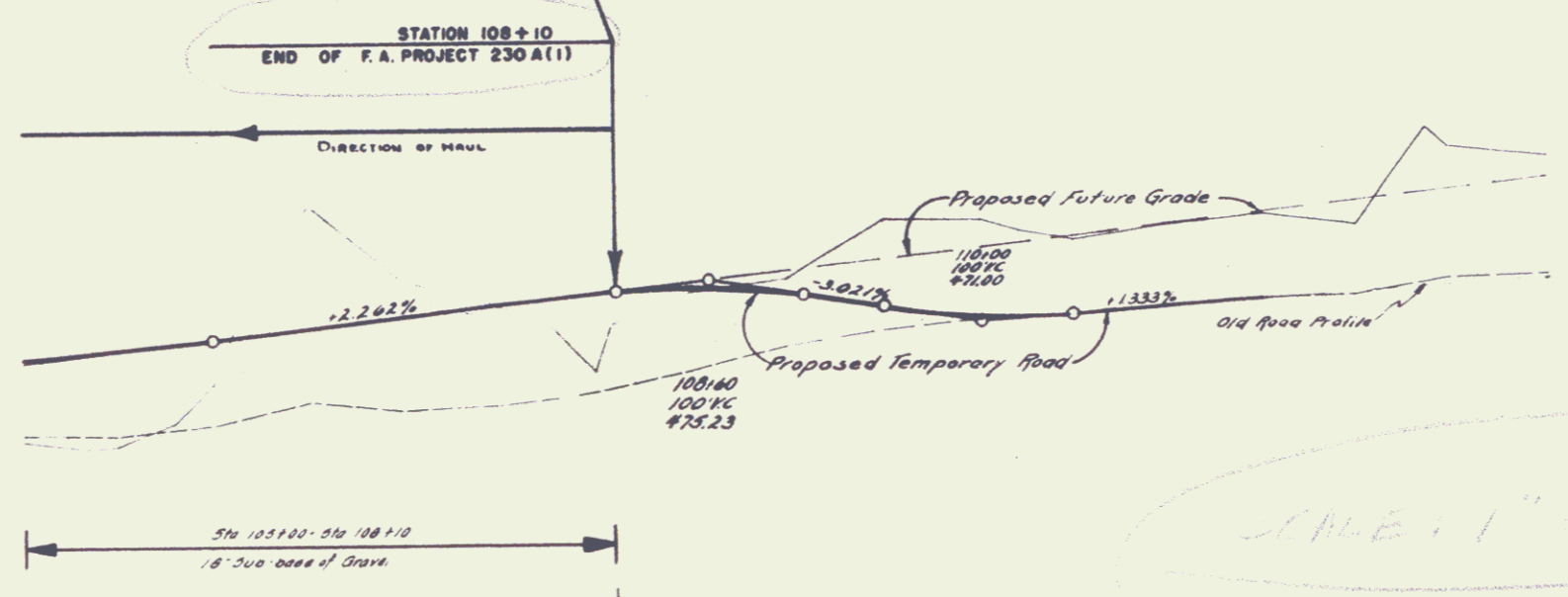
PARCEL INSTRUMENT	DATE	GRANTOR	GRANTEE	RECORDED	REMARKS
D	W.D. DE.	6-26-40	MAY MOULI C. BADGER	ST. OF N.	BOOK PAGE DATE 2883 2 29 40

1304.1 1940 4 70

Survey
C. L. COVIL



STA 105+00 - STA 108+10 RT
See planting note on sheet 13



106	17.54	418.2	748.63
106	18.33	419.9	749.7
130	6.35	420.6	750.8
132	7.94	421.6	751.8
133	7.46	422.6	752.8
134	7.24	423.6	753.8
135	7.18	424.6	754.8
136	7.15	425.6	755.8
137	7.14	426.6	756.8
138	7.14	427.6	757.8
139	7.15	428.6	758.8
140	7.16	429.6	759.8
141	7.17	430.6	760.8
142	7.18	431.6	761.8
143	7.19	432.6	762.8
144	7.20	433.6	763.8
145	7.21	434.6	764.8
146	7.22	435.6	765.8
147	7.23	436.6	766.8
148	7.24	437.6	767.8
149	7.25	438.6	768.8
150	7.26	439.6	769.8
151	7.27	440.6	770.8
152	7.28	441.6	771.8
153	7.29	442.6	772.8
154	7.30	443.6	773.8
155	7.31	444.6	774.8
156	7.32	445.6	775.8
157	7.33	446.6	776.8
158	7.34	447.6	777.8
159	7.35	448.6	778.8
160	7.36	449.6	779.8
161	7.37	450.6	780.8
162	7.38	451.6	781.8
163	7.39	452.6	782.8
164	7.40	453.6	783.8
165	7.41	454.6	784.8
166	7.42	455.6	785.8
167	7.43	456.6	786.8
168	7.44	457.6	787.8
169	7.45	458.6	788.8
170	7.46	459.6	789.8
171	7.47	460.6	790.8
172	7.48	461.6	791.8
173	7.49	462.6	792.8
174	7.50	463.6	793.8
175	7.51	464.6	794.8
176	7.52	465.6	795.8
177	7.53	466.6	796.8
178	7.54	467.6	797.8
179	7.55	468.6	798.8
180	7.56	469.6	799.8
181	7.57	470.6	800.8
182	7.58	471.6	801.8
183	7.59	472.6	802.8
184	7.60	473.6	803.8
185	7.61	474.6	804.8
186	7.62	475.6	805.8
187	7.63	476.6	806.8
188	7.64	477.6	807.8
189	7.65	478.6	808.8
190	7.66	479.6	809.8
191	7.67	480.6	810.8
192	7.68	481.6	811.8
193	7.69	482.6	812.8
194	7.70	483.6	813.8
195	7.71	484.6	814.8
196	7.72	485.6	815.8
197	7.73	486.6	816.8
198	7.74	487.6	817.8
199	7.75	488.6	818.8
200	7.76	489.6	819.8
201	7.77	490.6	820.8
202	7.78	491.6	821.8
203	7.79	492.6	822.8
204	7.80	493.6	823.8
205	7.81	494.6	824.8
206	7.82	495.6	825.8
207	7.83	496.6	826.8
208	7.84	497.6	827.8
209	7.85	498.6	828.8
210	7.86	499.6	829.8
211	7.87	500.6	830.8
212	7.88	501.6	831.8
213	7.89	502.6	832.8
214	7.90	503.6	833.8
215	7.91	504.6	834.8
216	7.92	505.6	835.8
217	7.93	506.6	836.8
218	7.94	507.6	837.8
219	7.95	508.6	838.8
220	7.96	509.6	839.8
221	7.97	510.6	840.8
222	7.98	511.6	841.8
223	7.99	512.6	842.8
224	8.00	513.6	843.8
225	8.01	514.6	844.8
226	8.02	515.6	845.8
227	8.03	516.6	846.8
228	8.04	517.6	847.8
229	8.05	518.6	848.8
230	8.06	519.6	849.8
231	8.07	520.6	850.8
232	8.08	521.6	851.8
233	8.09	522.6	852.8
234	8.10	523.6	853.8
235	8.11	524.6	854.8
236	8.12	525.6	855.8
237	8.13	526.6	856.8
238	8.14	527.6	857.8
239	8.15	528.6	858.8
240	8.16	529.6	859.8
241	8.17	530.6	860.8
242	8.18	531.6	861.8
243	8.19	532.6	862.8
244	8.20	533.6	863.8
245	8.21	534.6	864.8
246	8.22	535.6	865.8
247	8.23	536.6	866.8
248	8.24	537.6	867.8
249	8.25	538.6	868.8
250	8.26	539.6	869.8
251	8.27	540.6	870.8
252	8.28	541.6	871.8
253	8.29	542.6	872.8
254	8.30	543.6	873.8
255	8.31	544.6	874.8
256	8.32	545.6	875.8
257	8.33	546.6	876.8
258	8.34	547.6	877.8
259	8.35	548.6	878.8
260	8.36	549.6	879.8
261	8.37	550.6	880.8
262	8.38	551.6	881.8
263	8.39	552.6	882.8
264	8.40	553.6	883.8
265	8.41	554.6	884.8
266	8.42	555.6	885.8
267	8.43	556.6	886.8
268	8.44	557.6	887.8
269	8.45	558.6	888.8
270	8.46	559.6	889.8
271	8.47	560.6	890.8
272	8.48	561.6	891.8
273	8.49	562.6	892.8
274	8.50	563.6	893.8
275	8.51	564.6	894.8
276	8.52	565.6	895.8
277	8.53	566.6	896.8
278	8.54	567.6	897.8
279	8.55	568.6	898.8
280	8.56	569.6	899.8
281	8.57	570.6	900.8
282	8.58	571.6	901.8
283	8.59	572.6	902.8
284	8.60	573.6	903.8
285	8.61	574.6	904.8
286	8.62	575.6	905.8
287	8.63	576.6	906.8
288	8.64	577.6	907.8
289	8.65	578.6	908.8
290	8.66	579.6	909.8
291	8.67	580.6	910.8
292	8.68	581.6	911.8
293	8.69	582.6	912.8
294	8.70	583.6	913.8
295	8.71	584.6	914.8
296	8.72	585.6	915.8
297	8.73	586.6	916.8
298	8.74	587.6	917.8
299	8.75	588.6	918.8
300	8.76	589.6	919.8
301	8.77	590.6	920.8
302	8.78	591.6	921.8
303	8.79	592.6	922.8
304	8.80	593.6	923.8
305	8.81	594.6	924.8
306	8.82	595.6	925.8
307	8.83	596.6	926.8
308	8.84	597.6	927.8
309	8.85	598.6	928.8
310	8.86	599.6	929.8
311	8.87	600.6	930.8
312	8.88	601.6	931.8
313	8.89	602.6	932.8
314	8.90	603.6	933.8
315	8.91	604.6	934.8
316	8.92	605.6	935.8
317	8.93	606.6	936.8
318	8.94	607.6	937.8
319	8.95	608.6	938.8
320	8.96	609.6	939.8
321	8.97	610.6	940.8
322	8.98	611.6	941.8
323	8.99	612.6	942.8
324	9.00	613.6	943.8
325	9.01	614.6	944.8
326	9.02	615.6	945.8
327	9.03	616.6	946.8
328	9.04	617.6	947.8
329	9.05	618.6	948.8
330	9.06	619.6	949.8
331	9.07	620.6	950.8
332	9.08	621.6	951.8
333	9.09	622.6	952.8
334	9.10	623.6	953.8
335	9.11	624.6	954.8
336	9.12	625.6	955.8
337	9.13	626.6	956.8
338	9.14	627.6	957.8
339	9.15	628.6	958.8
340	9.16	629.6	959.8
341	9.17	630.6	960.8
342	9.18	631.6	961.8
343	9.19	632.6	962.8
344	9.20	633.6	963.8
345	9.21	634.6	964.8
346	9.22	635.6	965.8
347	9.23	636.6	966.8
348	9.24	637.6	967.8
349	9.25	638.6	968.8
350	9.26	639.6	969.8
351	9.27	640.6	970.8
352	9.28	641.6	971.8
353	9.29	642.6	972.8
354	9.30	643.6	973.8
355	9.31	644.6	974.8
356	9.32	645.6	975.8
357	9.33	646.6	976.8
358	9.34	647.6	977.8
359	9.35	648.6	978.8
360	9.36	649.6	979.8
361	9.37	650.6	980.8
362	9.38	651.6	981.8
363	9.39	652.6	982.8
364	9.40	653.6	983.8
365	9.41	654.6	984.8
366	9.42	655.6	985.8
367	9.43	656.6	986.8
368</			