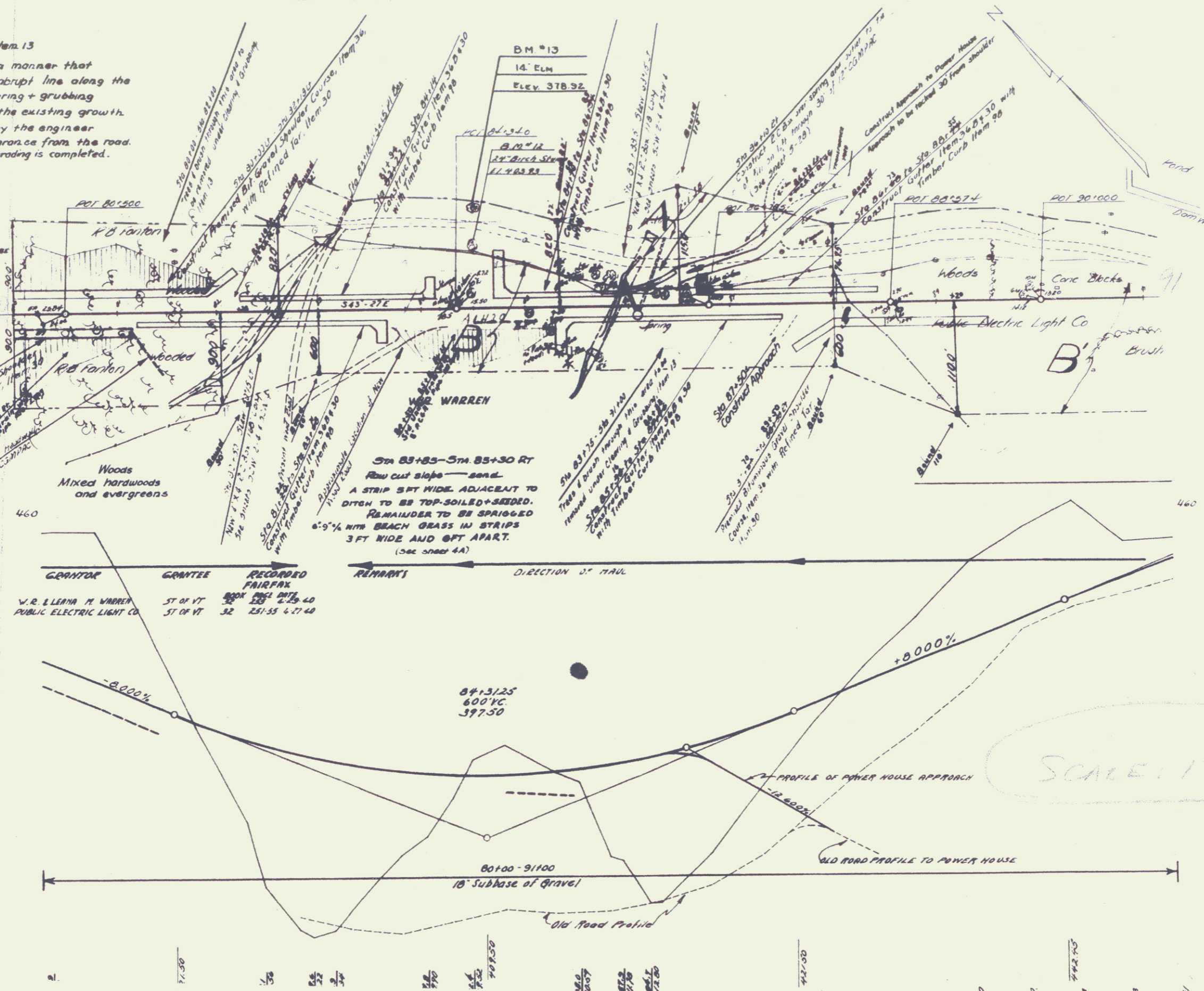


NOTE: Clearing + Grubbing— item 13
 his work shall be done in such a manner that existing growth will not stop in an abrupt line along the limits of the grading. After clearing + grubbing back to the limits of the grading, the existing growth shall be thinned back as directed by the engineer so that it will present a natural appearance from the road. The final thinning shall be done after the grading is completed.

Sta 80+00—Sta 81+15 Rt
 Sta 80+00—Sta 82+00 Lt
 STRIP 6 FT WIDE ADJACENT TO PAVED DITCH TO BE TOP-SOILED + SEDED. REMAINDER TO BE SPRIGGED 6" x 9" WITH BRACH GRASS IN STRIPS 3 FT WIDE AND 6 FT APART.
 (See sheet 4A)

PARCEL	INSTRUMENT	DATE	GRANTOR	GRANTEE	RECORDED	REMARKS	DIRECTION OF TRAVEL
B	WDOE	6-26-60	V.R. LLEWIS H. WARREN	ST OF VT	BOOK 230 PAGE 40		
A-B	COND		PUBLIC ELECTRIC LIGHT CO	ST OF VT	251-55 6-27-48		



Sta 87+60—Sta 91+00 Rt
 See planting note on sheet 13

SCALE: 1" = 80'