

INDEX OF SHEETS

| | |
|-------------|---|
| SHEET NO. 1 | TITLE PAGE |
| 2 | TYPICAL SECTION SINGLE TAPE OF OUTSIDE ASPHALT WITH CRUSSED PEA STONE SEAL, 175# 3/4" |
| 3 | BANKING AND WIDENING TABLES |
| 4-5 | QUANTITY SHEETS (ITEMS) |
| 6-7 | QUANTITY SHEETS (DRAINAGE) |
| 8-10 | EARTHWORK SHEETS |
| 17-38 | PLAN AND PROFILE SHEETS |
| 39 | DETAIL OF FLOOR FOR EXISTING 4.5 X 6' R.C. BOX (161+60.5) |
| 40 | DETAIL OF 6' X 4' R.C.B. EXTENSION (408+88.5) |
| 41 | PLAN (20 SCALE BRIDGE) |
| 42 | PROFILE (20 SCALE BRIDGE) |
| 43 | REINFORCING STEEL SCHEDULE |
| 44 | EARTHWORK SHEET (BRIDGE) |
| 45 | DETAILS OF ABUTMENTS NOS. 1 & 2 (279+91-280+70) |
| 46 | CONSTRUCTION DETAILS CD (DRAINAGE AND MARKERS) |
| 47 | CONSTRUCTION DETAILS CD-2 (TYPICAL GRADINGS) |
| 48 | STANDARD STRUCTURE SHEET S-40 (BARRICADES, SIGNS AND LIGHTS) |
| 49 | STANDARD STRUCTURE SHEET S-45-48 (PLANK GUARD RAIL) |
| 50 | STANDARD STRUCTURE SHEET S-48-46 (THREE CABLE GUARD RAIL) |
| 51 | STANDARD STRUCTURE SHEET S-2-4 (BOX CULVERT) |
| 52-A | STANDARD STRUCTURE SHEET S-2-4 (BOX CULVERT INLET AND OUTLET) |
| 53 | STANDARD STRUCTURE SHEET S-29 (BOX CULVERT) |
| 54 | STANDARD STRUCTURE SHEET S-20 (DETAILS C.O.P., K & L) |
| 55 | STANDARD STRUCTURE SHEET S-8-50-1 (CURE & PAINT) |
| 56 | STANDARD STRUCTURE SHEET S-8-50-1 (SUPERSTRUCTURE) |
| 57-A | STANDARD STRUCTURE SHEET S-8-21 (EXPANSION JOINTS) |
| 58-A | STANDARD STRUCTURE SHEET S-8-11 (BARRICADES, SIGNS AND LIGHTS) FOR BRIDGES |
| 57-60-60-A | CHANNEL SECTIONS |
| 61-180 | GROSS SECTIONS |

STANDARD STRUCTURE SHEET APPROVED BY THE CHIEF ENGINEER, VERMONT STATE DEPARTMENT OF HIGHWAYS.

S-40 - JUNE 10, 1950

**STATE OF VERMONT
DEPARTMENT OF HIGHWAYS**

PROPOSED IMPROVEMENT

FEDERAL PROJECT

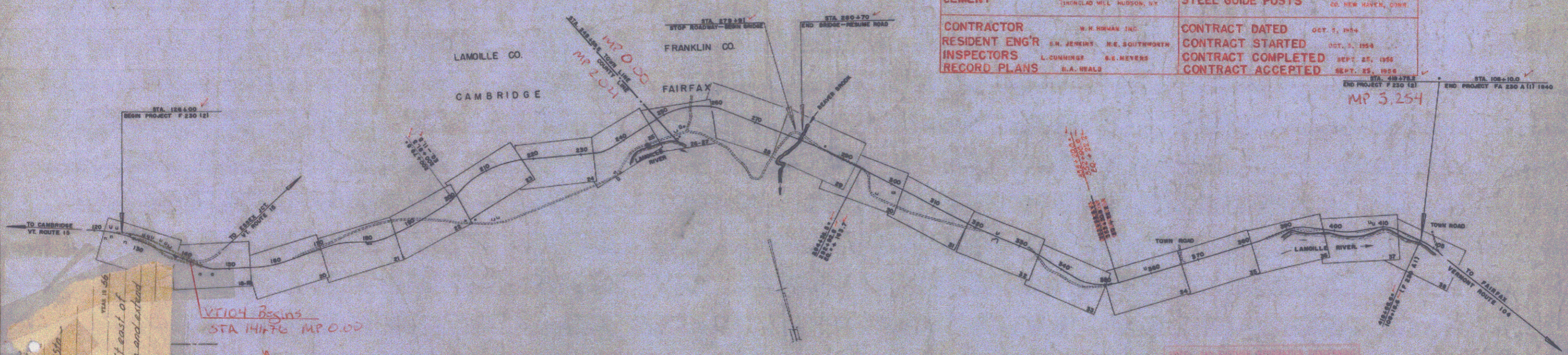
**TOWNS OF CAMBRIDGE-FAIRFAX
COUNTIES OF LAMOILLE-FRANKLIN
VERMONT ROUTE 104
CAMBRIDGE-FAIRFAX ROAD**

BEGINNING AT A POINT APPROXIMATELY 12,248.0 FEET EAST OF THE CAMBRIDGE-FAIRFAX TOWN LINE AND EXTENDING WESTERLY 29,429.6 FEET (INCLUDING BRIDGE).

LENGTH OF ROADWAY 29,350.6 FEET = 5.599 MILES
 LENGTH OF BRIDGE 79.0 FEET = 0.015 MILES
 LENGTH OF PROJECT 29,429.6 FEET = 5.574 MILES



| | | |
|--|---|---|
| PROJECT NAME & NUMBER | TYPE | PAVEMENT AREA |
| CAMBRIDGE-FAIRFAX F 230(2) | SINGLE TAPE CUT CUT BACK ASPHALT CRUSSED PEASTONE | 71,746 S.Y. |
| RECORD PLANS | | |
| MATERIALS | | |
| SUB-BASE OF GRAVEL | REINFORCING STEEL | VERMONT STEEL CAMBRIDGE, MASS. |
| REINFORCING STEEL | R.C.P. | VT. CONC. PIPE CO. WINDSOR, VT. |
| SUB-BASE OF SAND CUT-BACK ASPHALT | ACCGMP | BERGER METAL PIPE CO. WESTMINSTER, VT. |
| PEASTONE | CABLE FOR GAURD RAIL | AMERICAN STEEL & WIRE CO. NEW HAVEN, CONN. |
| CEMENT | GUARD RAIL PAINT | C.C. BRADLEY CO. BRATTLEBORO, VT. |
| | STEEL GUIDE POSTS | A. WHELAN STEEL & WIRE CO. NEW HAVEN, CONN. |
| CONTRACTOR | CONTRACT DATED | OCT. 1, 1949 |
| RESIDENT ENGR | CONTRACT STARTED | OCT. 1, 1949 |
| INSPECTORS | CONTRACT COMPLETED | SEPT. 25, 1950 |
| RECORD PLANS | CONTRACT ACCEPTED | SEPT. 25, 1950 |



Cambridge Ex. F 230 (2)
 Sup'd Th. of Chik. Sub. - 10-25-50
 (V.T.O.V.)
 W. H. Hummer, Inc.
 Begin approx. 12,400 ft. east of Cambridge-Fairfax town line and extend

VT 104 Begins STA 141+70 MP 0.00

| | | |
|-----------------------|----------|-------|
| GROUND ELEVATION | DATUM | SEA L |
| GRADE ELEVATION | DATUM | SEA L |
| CURVE DATA | | |
| DEFLECTION OF ANGLE | Δ | |
| DEGREE OF CURVE | D | |
| RADIUS OF CURVE | R | |
| TANGENT DISTANCE | T | |
| LENGTH OF CURVE | L | |
| EXTERNAL DISTANCE | E | |
| POINT OF INTERSECTION | P.I. | |
| POINT OF CURVE | P.C. | |
| POINT OF TANGENT | P.T. | |
| POINT ON TANGENT | P.O.T. | |
| POINT ON SUB-TANGENT | P.O.S.T. | |

CAMBRIDGE FAIRFAX F 230(2)
 CON. BY W. H. HUMMER, INC.
 COMPLETION DATE SEPT. 25, 1950

SCALES

| | |
|--------------------|------------|
| TITLE | 1" = 1000' |
| TYPICAL | 1" = 4' |
| PLAN | 1" = 80' |
| PROFILE HORIZONTAL | 1" = 80' |
| PROFILE VERTICAL | 1" = 10' |
| GROSS SECTIONS | 1" = 8' 6" |

| | | | | | | | |
|---------------------------|---------------------------|---------------------------|---------------------------|---------------------------|---------------------------|---------------------------|---------------------------|
| APPROVED | 9/3/54 | APPROVED | 9/3/54 | APPROVED | 9/3/54 | APPROVED | 9/3/54 |
| <i>W. H. Hummer, Inc.</i> | <i>W. H. Hummer, Inc.</i> | <i>W. H. Hummer, Inc.</i> | <i>W. H. Hummer, Inc.</i> | <i>W. H. Hummer, Inc.</i> | <i>W. H. Hummer, Inc.</i> | <i>W. H. Hummer, Inc.</i> | <i>W. H. Hummer, Inc.</i> |
| DATE | Sept. 7, 1954 | DATE | Sept. 7, 1954 | DATE | Sept. 7, 1954 | DATE | Sept. 7, 1954 |

THESE PLANS ARE SUBJECT TO SUCH REVISIONS AS MAY BE REQUIRED BY THE BUREAU OF PUBLIC ROADS OR THE COMMISSIONER OF HIGHWAYS.

CONSTRUCTION IS TO BE CARRIED ON IN ACCORDANCE WITH THE PLANS AND THE STANDARD ROAD AND BRIDGE SPECIFICATIONS OF 1948, AS APPROVED JULY 25, 1949 BY THE BUREAU OF PUBLIC ROADS, INCLUDING ALL SUBSEQUENT APPROVED REVISIONS AND SUCH REVISED SPECIFICATIONS AND SPECIAL PROVISIONS AS ARE SUBMITTED WITH THE PLANS.

DEPARTMENT OF COMMERCE
 BUREAU OF PUBLIC ROADS

Pin # 00R225

Date 9/25/1950

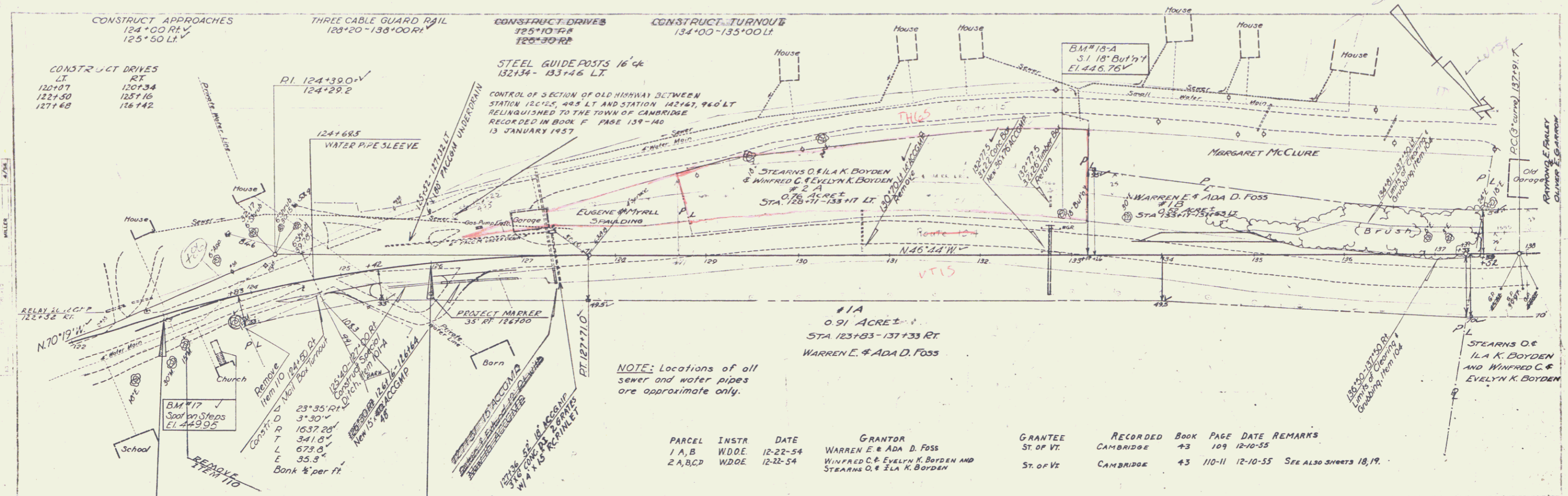
APPROVED

DISTRICT ENGINEER

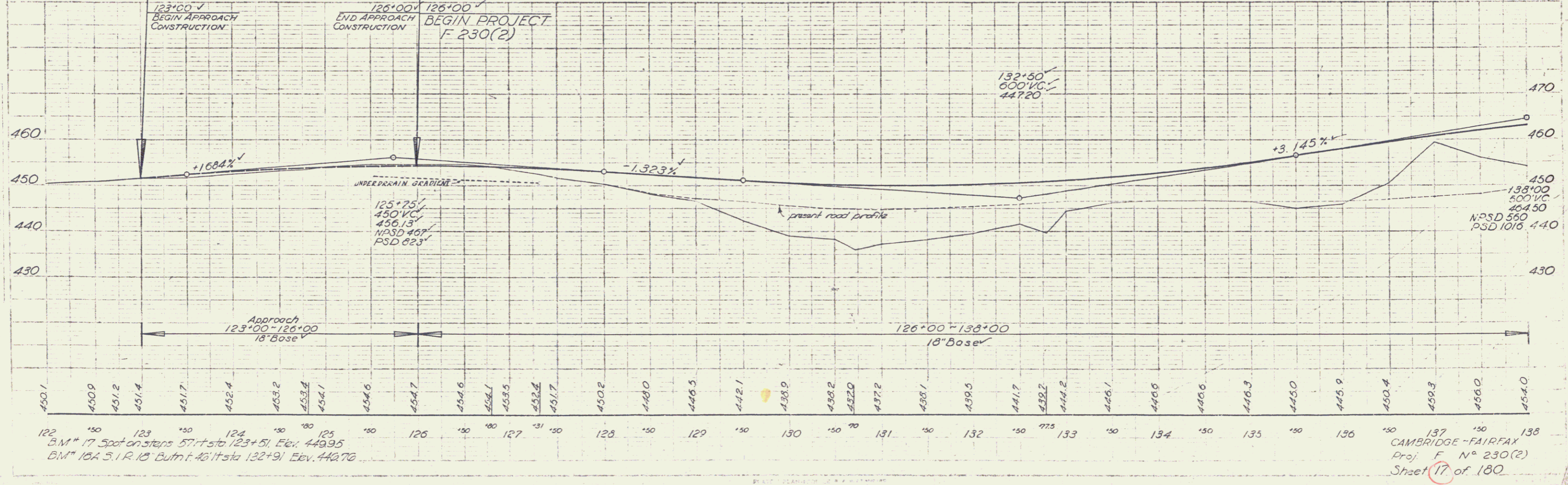
DATE

PROJECT F 230 (2)

SHEET 1 OF 183 SHEETS



| PARCEL | INSTR | DATE | GRANTOR | GRANTEE | RECORDED | BOOK | PAGE | DATE | REMARKS |
|--------------|----------|----------|--|------------|-----------|------|--------|----------|-------------------------|
| 1 A, B | W.D.D.E. | 12-22-54 | WARREN E. & ADA D. FOSS | ST. OF VT. | CAMBRIDGE | 43 | 109 | 12-10-55 | |
| 2 A, B, C, D | W.D.D.E. | 12-22-54 | WINFRED C. & EVELYN K. BOYDEN AND STEARNS O. & ILA K. BOYDEN | ST. OF VT. | CAMBRIDGE | 43 | 110-11 | 12-10-55 | SEE ALSO SHEETS 18, 19. |



B.M. # 17 Spot on steps 57' to sta 123+51, Elev. 449.95
 B.M. # 18 S.I.R. 18' butht 46' to sta 132+91 Elev. 442.76

CAMBRIDGE-FAIRFAX
 Proj. F N° 230(2)
 Sheet 17 of 180

NON GOV'T PARTICIPATION
145*95 Install sleeve for
water pipe across roadway.
Items 103 A & 103 B, Non Gov't.
Sleeve to be furnished by
property owner.

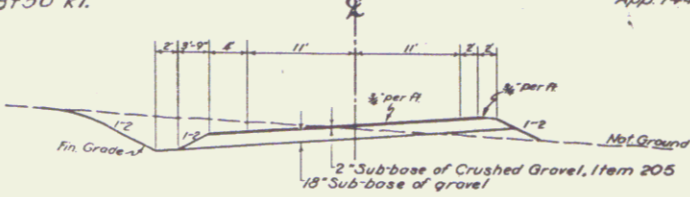
THREE CABLE GUARD RAIL
139*00-140*88 RT
133
APPROACH LT 144.2 2374'

STEEL GUIDE POSTS 10' c/c
142*40-144*54 RT
146*30-144*56 RT
147*48-148*50 RT

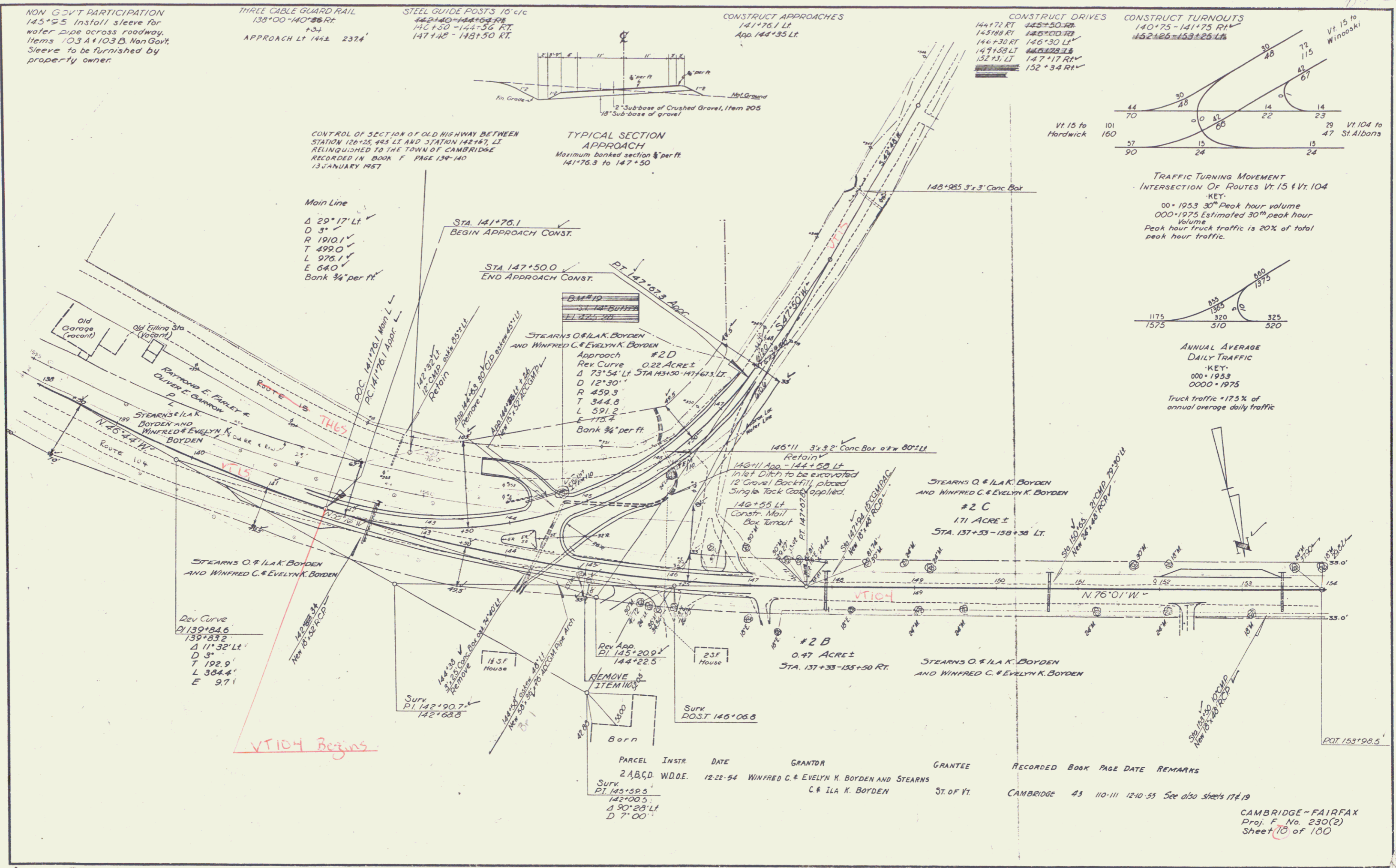
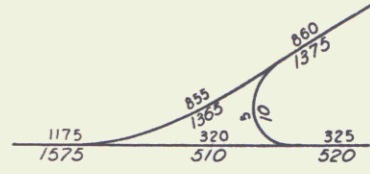
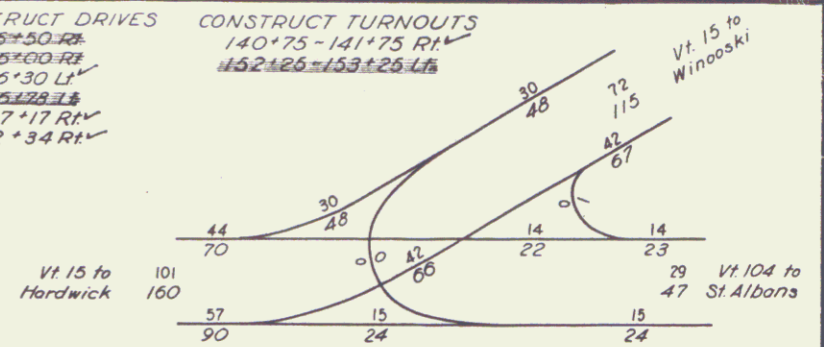
CONSTRUCT APPROACHES
141*76.1 LT
App 144*35 LT

CONSTRUCT DRIVES
144*72 RT 145*50 RT
143*88 RT 146*00 RT
144*30 RT 146*30 LT
147*58 LT 145*28 LT
152*11 LT 147*17 RT
152*34 RT

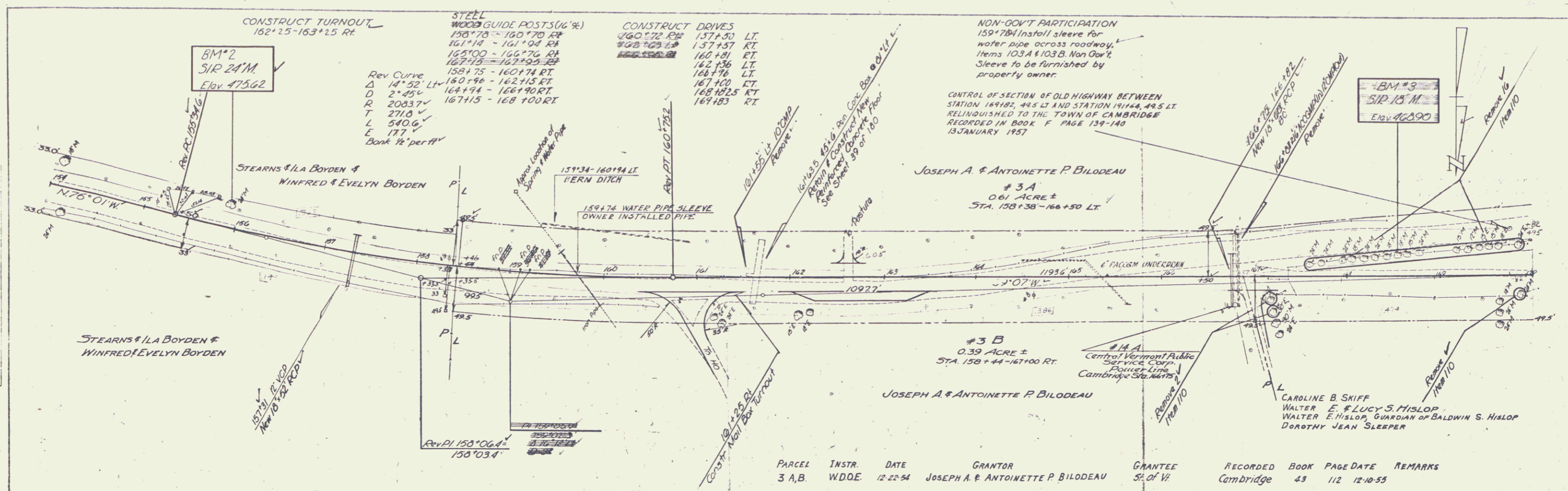
CONSTRUCT TURNOUTS
140*75-141*75 RT
146*245-153*25 LT



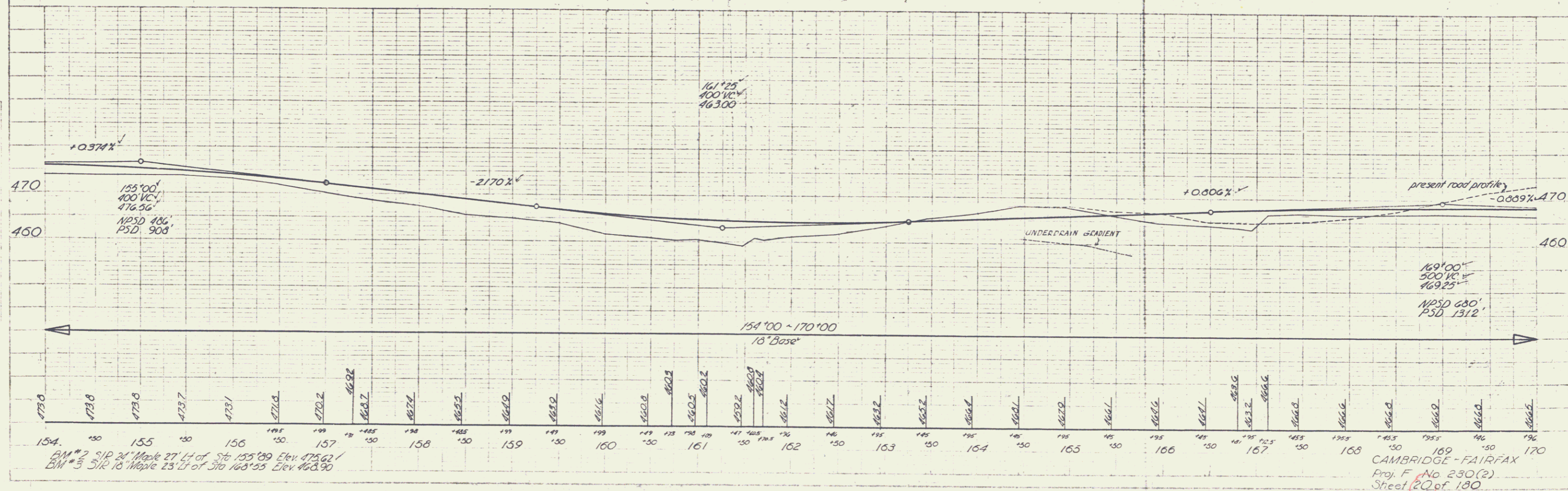
CONTROL OF SECTION OF OLD HIGHWAY BETWEEN
STATION 126+25.485 LT AND STATION 142+17.12
RELINQUISHED TO THE TOWN OF CAMBRIDGE
RECORDED IN BOOK F PAGE 139-140
13 JANUARY 1957



FILED
 DATE
 1/23
 1957
 DRAWING
 1/53
 L. Pratt



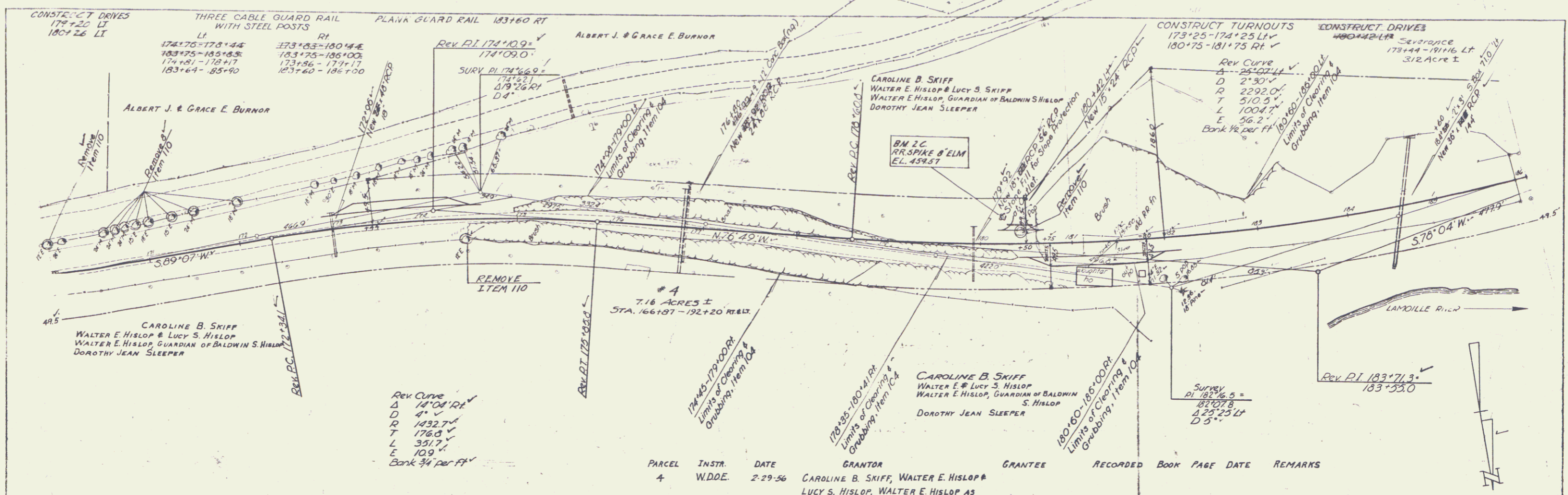
FILED
 DATE
 9/23
 MILLER



BM #2 SIP 24 Maple 27' Lt of St. 155+89 Elev. 475.62 /
 BM #3 SIP 18 Maple 23' Lt of St. 163+55 Elev. 468.90

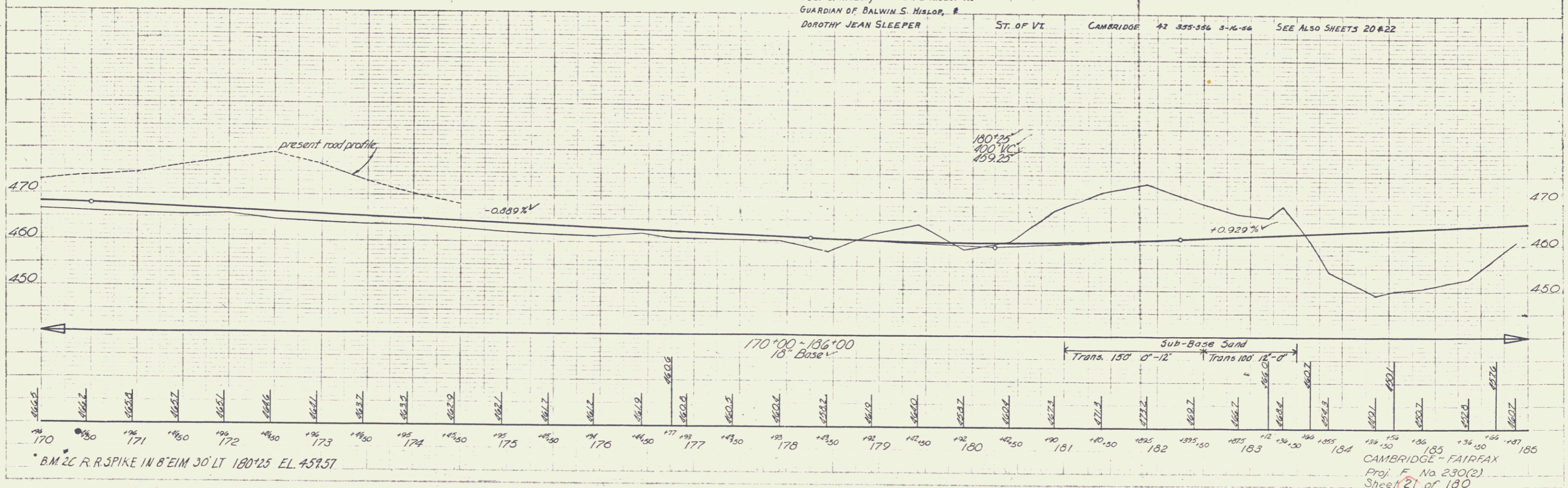
CAMBRIDGE - FAIRFAX
 Proj. F No 230(2)
 Sheet 20 of 180

PLAN
SCALE 1" = 40'
DATE 7/25/56
BY MILLER
CHECKED BY MILLER
TYPED BY MILLER



Rev Curve
Δ 14'04" RA
D 4' ✓
R 1432.7 ✓
T 176.5 ✓
L 351.7 ✓
E 10.9 ✓
Bank 34 per FT

| PARCEL | INSTR. | DATE | GRANTOR | GRANTEE | RECORDED | BOOK | PAGE | DATE | REMARKS |
|--------|--------|---------|---|-----------|-----------|------|---------|---------|-------------------------|
| 4 | W.D.E. | 2-29-56 | CAROLINE B. SKIFF, WALTER E. HISLOP LUCY S. HISLOP, WALTER E. HISLOP AS GUARDIAN OF BALWIN S. HISLOP, DOROTHY JEAN SLEEPER | ST. OF VI | CAMBRIDGE | 42 | 355-556 | 3-15-56 | SEE ALSO SHEETS 20 & 22 |

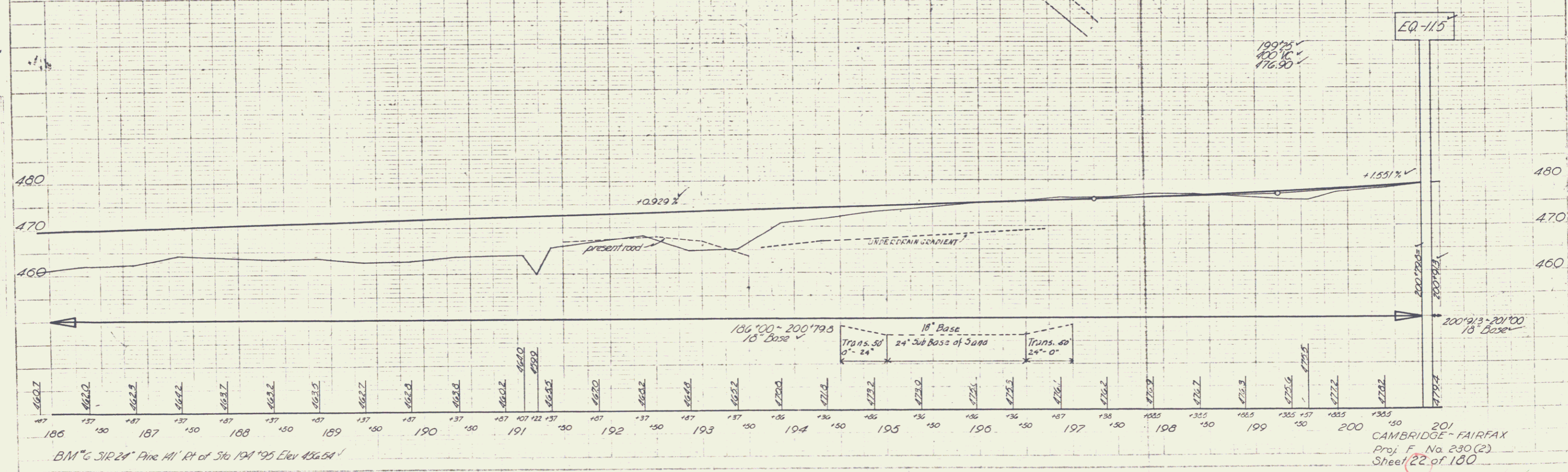
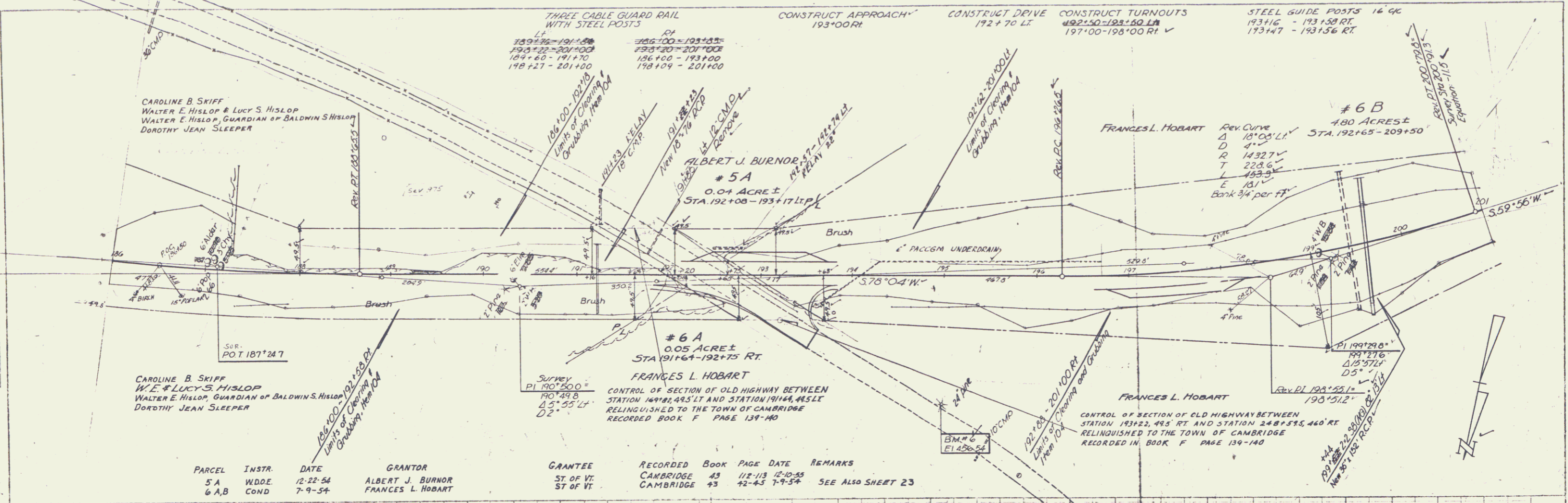


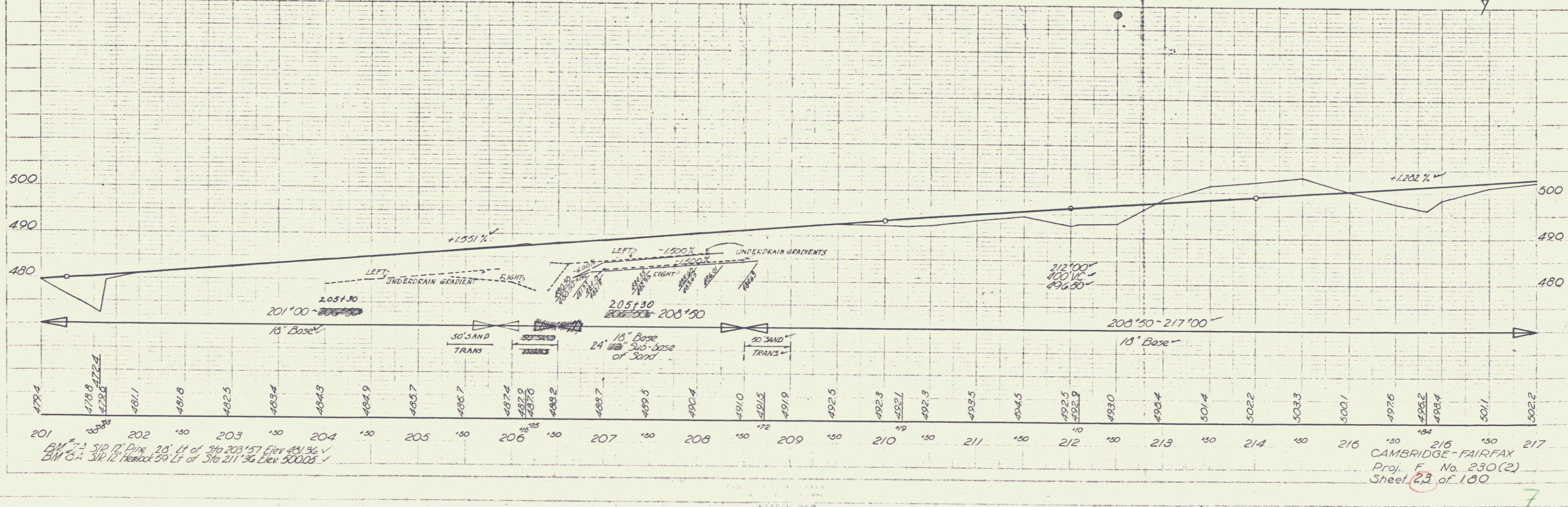
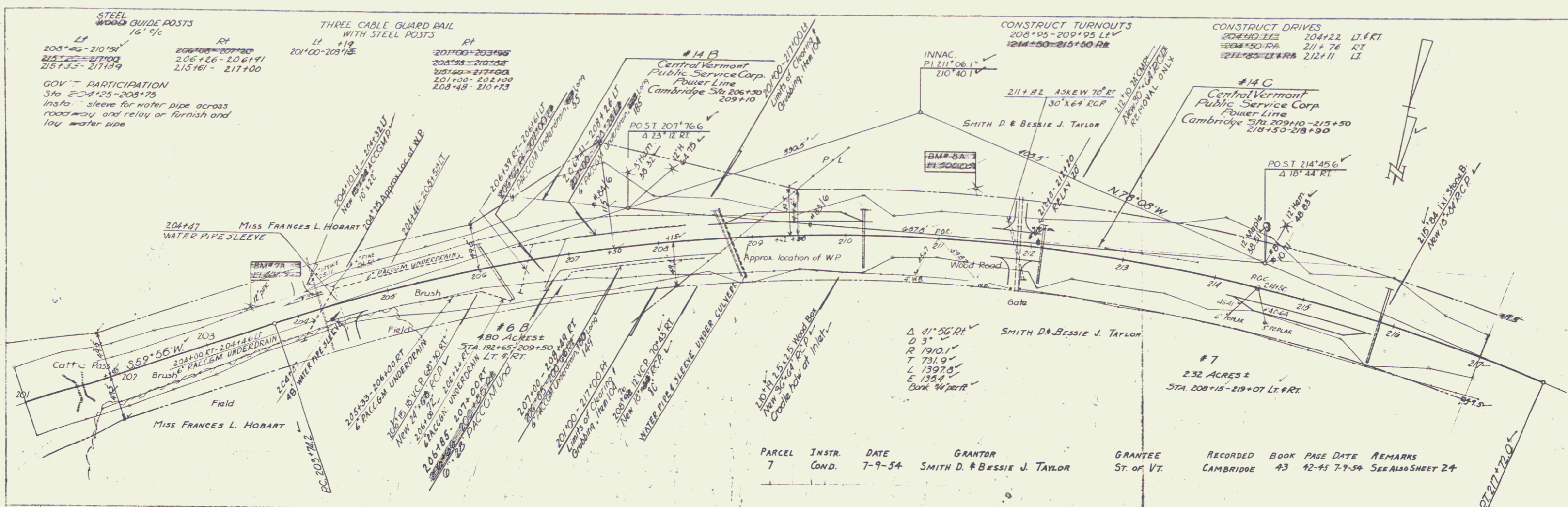
PROFILE
SCALE 1" = 40'
DATE 7/25/56
BY MILLER
CHECKED BY MILLER
TYPED BY MILLER

CAMBRIDGE - FAIRFAX
Proj. No. 230(2)
Sheet 21 of 180

FLW
 1/23
 0/93
 TRACKED

933
 MILLER
 1/23

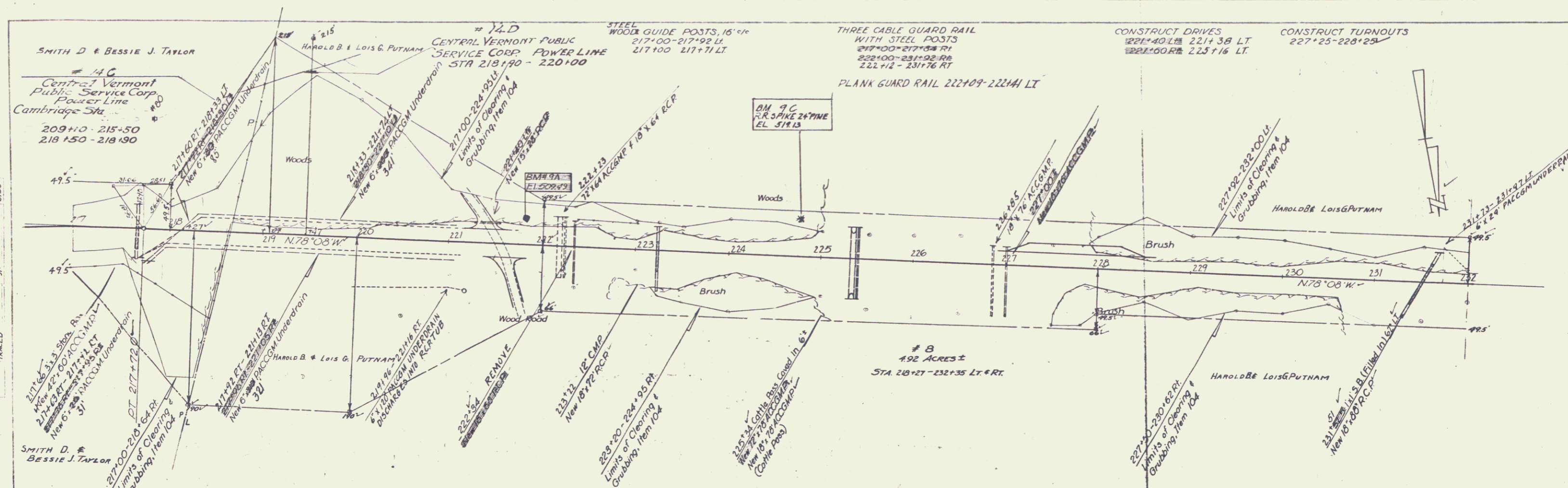




TRACED
 8/25
 8/25

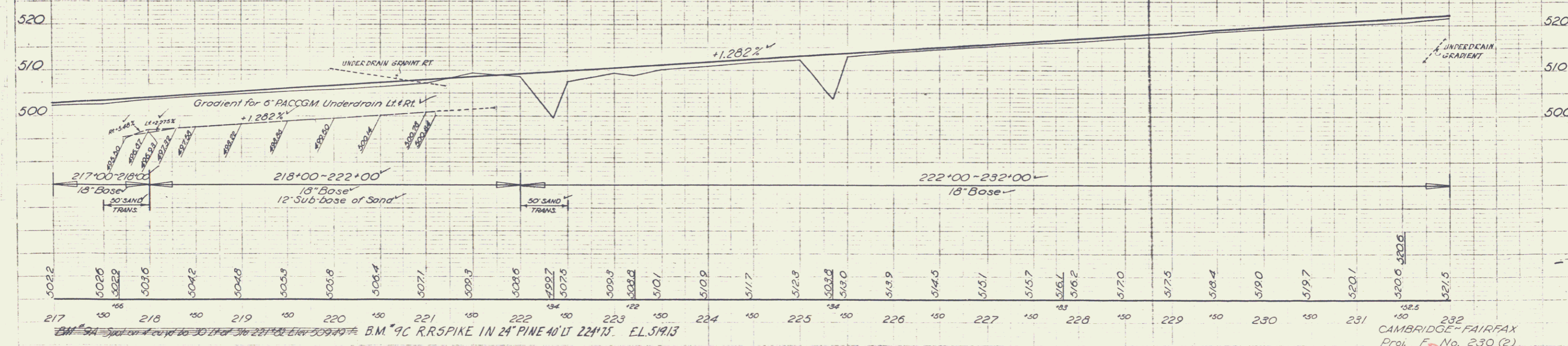
MILLER
 9/53

BM 71.1 S.P. 12' Pk. 28' Lt. of 316.203' 27' Elev. 481.96' ✓
 BM 61.1 S.P. 12' Pk. 59' Lt. of 316.211' 36' Elev. 500.05' ✓
 CAMBRIDGE - FAIRFAX
 Proj. F. No. 230(2)
 Sheet 23 of 180



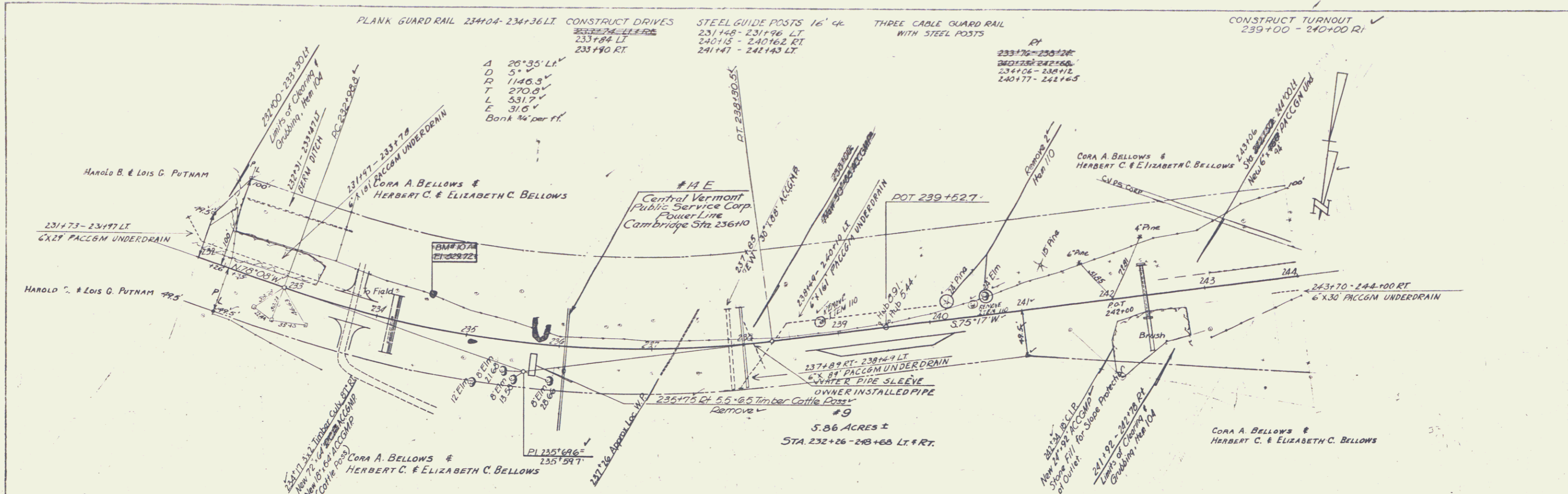
PLAN
 2/25
 8/25
 7/

| PARCEL | INSTR. | DATE | GRANTOR | GRANTEE | RECORDED | BOOK | PAGE | DATE | REMARKS |
|--------|--------|----------|----------------------------|------------|-----------|------|---------|----------|-------------------|
| 8 | W.D.E. | 12-22-54 | HAROLD B. & LOIS G. PUTNAM | ST. OF VT. | CAMBRIDGE | 43 | 113-114 | 12-10-55 | SEE ALSO SHEET 25 |

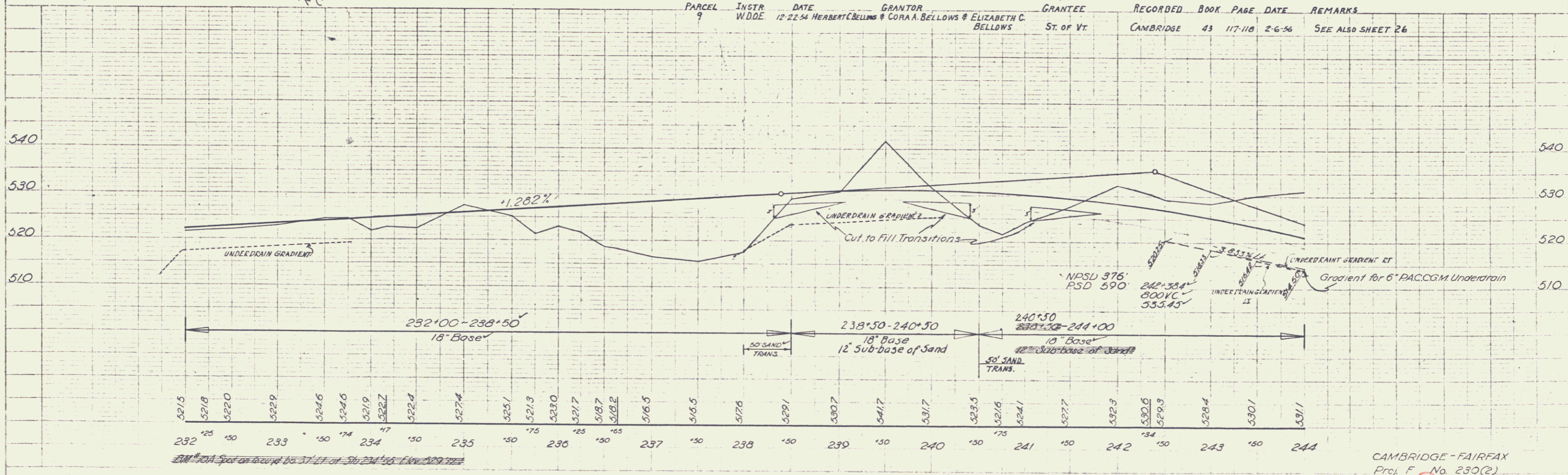


MILLER
 9/73

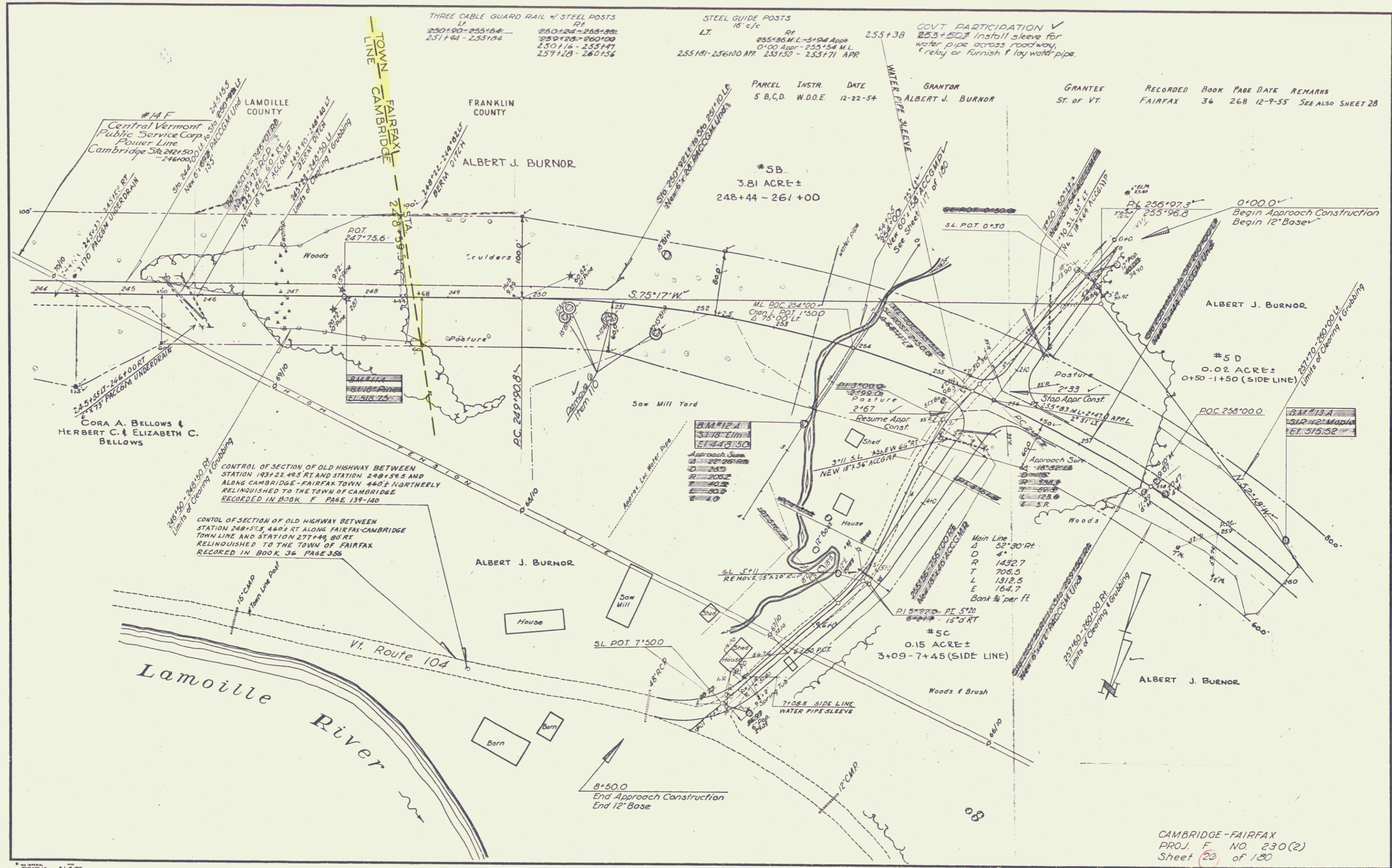
B.M. 9C RR SPIKE IN 24" PINE 40' LT 224+75 EL. 519.13
 CAMBRIDGE-FAIRFAX
 Proj. F. No. 230 (2)
 Sheet 24 of 180



| PARCEL | INSTR | DATE | GRANTOR | GRANTEE | RECORDED | BOOK | PAGE | DATE | REMARKS |
|--------|----------|----------|---|------------|-----------|------|---------|--------|-------------------|
| 9 | W.D.D.E. | 12-22-54 | HERBERT C. BELLOWS & CORA A. BELLOWS & ELIZABETH C. BELLOWS | ST. OF VT. | CAMBRIDGE | 43 | 117-118 | 2-6-56 | SEE ALSO SHEET 26 |



CAMBRIDGE - FAIRFAX
 Proj. F. No. 230(2)
 Sheet 25 of 180



THREE CABLE GUARD RAIL w/ STEEL POSTS
 LT RT
 250+90 - 255+54
 251+44 - 255+54
 250+24 - 266+90
 259+20 - 260+00
 250+16 - 255+47
 257+28 - 260+56

STEEL GUIDE POSTS
 LT RT
 255+35 M.L. - 5+94 APP
 0+00 APP - 255+54 M.L.
 255+141 - 256+100 M.P. 255+50 - 255+771 APP

GOVT PARTICIPATION ✓
 255+50' install sleeve for
 water pipe across roadway
 & relay or furnish if lay water pipe.

PARCEL INSTR DATE
 5 B,C,D W.D.O.E 12-22-54

GRANTOR
 ALBERT J. BURNOR

GRANTEE
 ST OF VT

RECORDED BOOK PAGE DATE REMARKS
 FAIRFAX 36 268 12-9-55 SEE ALSO SHEET 28

*5B
 3.81 ACRE ±
 248+44 - 261+00

*5D
 0.02 ACRE ±
 0+50 - 1+50 (SIDE LINE)

*5C
 0.15 ACRE ±
 3+09 - 7+45 (SIDE LINE)

CORA A. BELLOWS &
 HERBERT C. & ELIZABETH C.
 BELLOWS

ALBERT J. BURNOR

ALBERT J. BURNOR

CONTROL OF SECTION OF OLD HIGHWAY BETWEEN
 STATION 193+22.495 RT AND STATION 249+555 AND
 ALONG CAMBRIDGE - FAIRFAX TOWN 440' NORTHERLY
 RELINQUISHED TO THE TOWN OF CAMBRIDGE
 RECORDED IN BOOK F PAGE 139-140

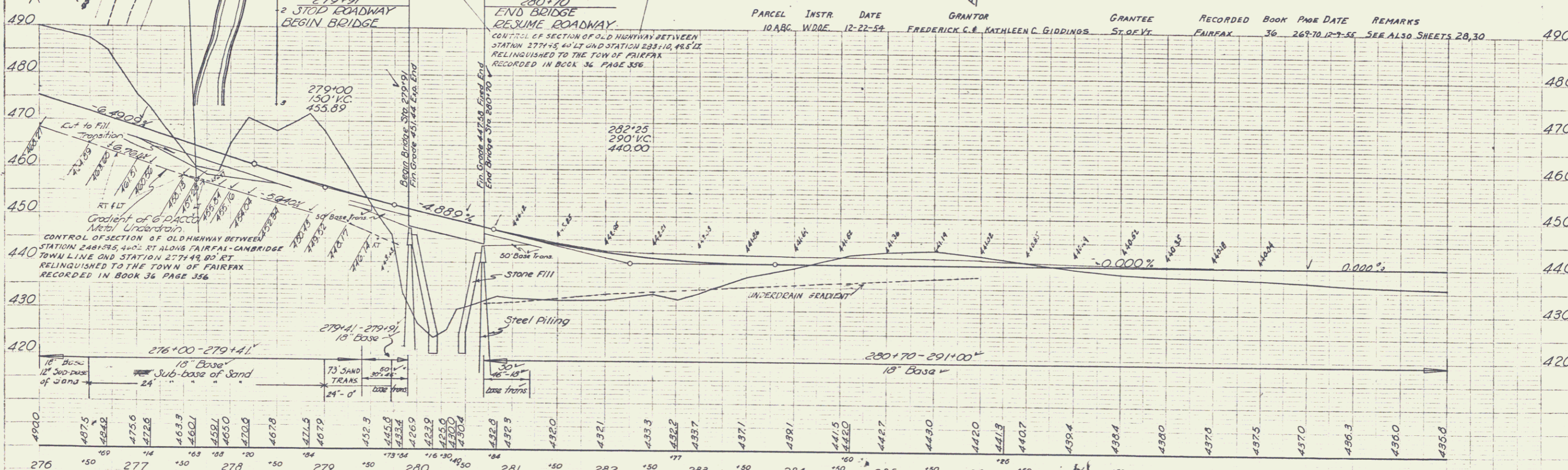
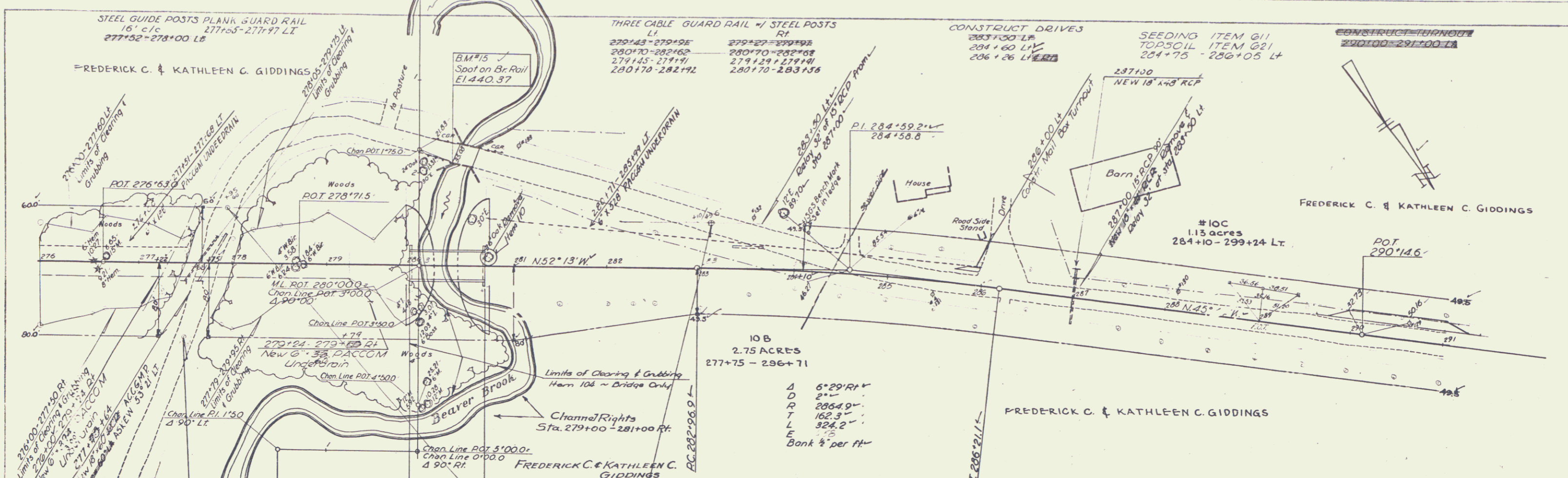
CONTROL OF SECTION OF OLD HIGHWAY BETWEEN
 STATION 248+515 S 440' RT ALONG FAIRFAX - CAMBRIDGE
 TOWN LINE AND STATION 277+46 90 RT
 RELINQUISHED TO THE TOWN OF FAIRFAX
 RECORDED IN BOOK 36 PAGE 336

Lamouille River

Vt. Route 104

8+50.0
 End Approach Construction
 End 12' Base

CAMBRIDGE - FAIRFAX
 PROJ. F. NO. 230(2)
 Sheet 26 of 180



| STATION | ELEVATION |
|---------|-----------|
| 276 | 490.0 |
| 276+15 | 487.5 |
| 276+30 | 484.0 |
| 276+45 | 475.6 |
| 276+60 | 472.6 |
| 276+75 | 469.3 |
| 276+90 | 460.1 |
| 277+05 | 459.1 |
| 277+20 | 465.0 |
| 277+35 | 470.6 |
| 277+50 | 467.8 |
| 277+65 | 471.5 |
| 277+80 | 467.9 |
| 277+95 | 452.3 |
| 278+10 | 445.6 |
| 278+25 | 443.4 |
| 278+40 | 426.9 |
| 278+55 | 422.9 |
| 278+70 | 420.0 |
| 278+85 | 430.4 |
| 279+00 | 432.8 |
| 279+15 | 432.9 |
| 279+30 | 432.0 |
| 279+45 | 432.1 |
| 279+60 | 433.3 |
| 279+75 | 432.2 |
| 279+90 | 433.7 |
| 280+05 | 437.1 |
| 280+20 | 438.1 |
| 280+35 | 441.5 |
| 280+50 | 442.0 |
| 280+65 | 442.7 |
| 280+80 | 443.0 |
| 280+95 | 442.0 |
| 281+10 | 441.3 |
| 281+25 | 440.7 |
| 281+40 | 439.4 |
| 281+55 | 438.4 |
| 281+70 | 438.0 |
| 281+85 | 437.6 |
| 282+00 | 437.5 |
| 282+15 | 437.0 |
| 282+30 | 436.3 |
| 282+45 | 436.0 |
| 282+60 | 435.8 |

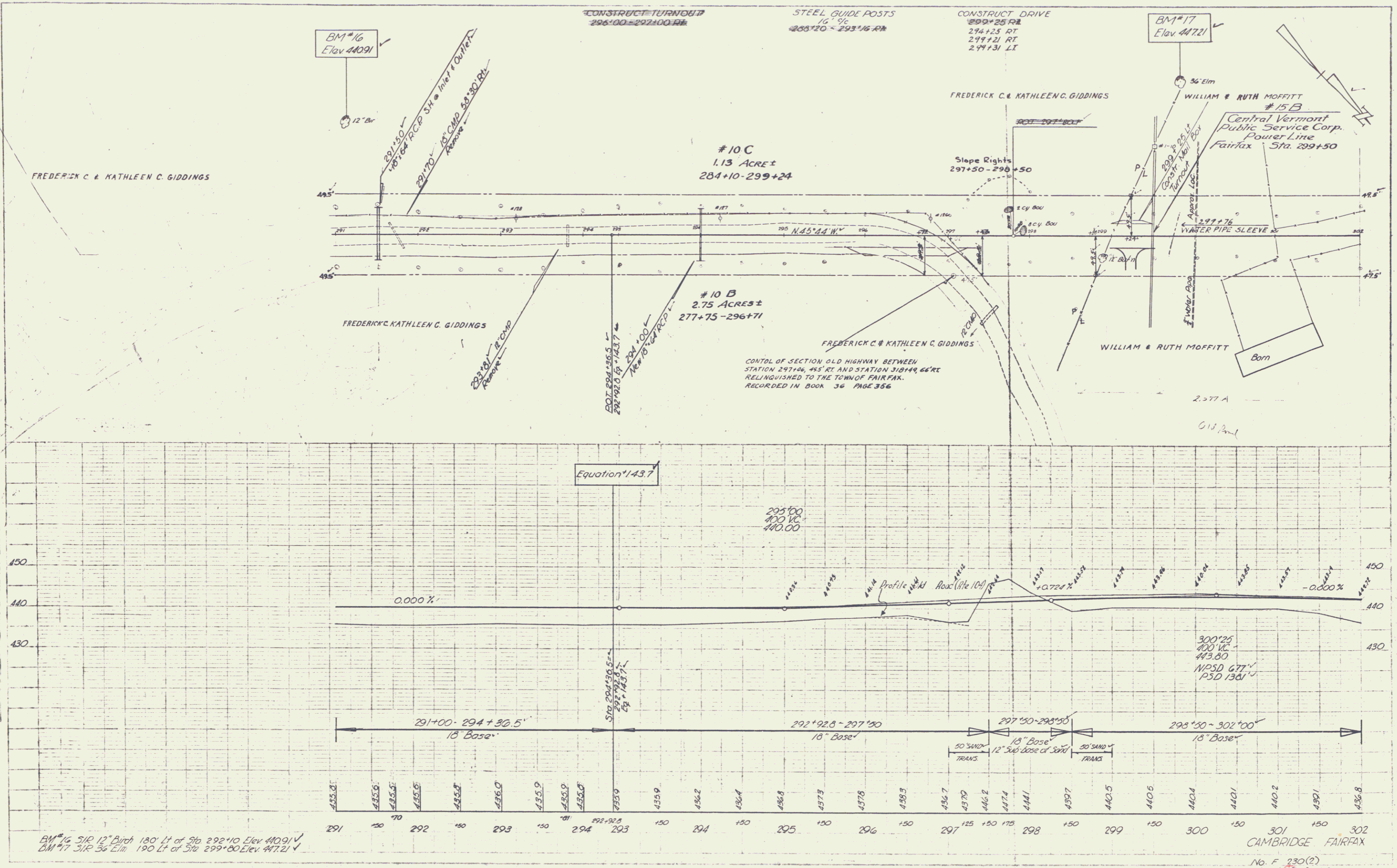
| PARCEL | INSTR | DATE | GRANTOR | GRANTEE | RECORDED | BOOK | PAGE | DATE | REMARKS |
|--------|-------|--------|----------|-------------------------------------|------------|---------|------|----------------|------------------------|
| 10B | 10ABC | W.D.E. | 12-22-54 | FREDERICK C. & KATHLEEN C. GIDDINGS | ST. OF VT. | FAIRFAX | 36 | 262-70-12-3-55 | SEE ALSO SHEETS 28, 30 |

PLAN
 1/4" = 100'
 1/8" = 50'
 1/16" = 25'
 1/32" = 12.5'

290 CAMBRIDGE - FAIRFAX
 PROJ. F. NO. 230(2)
 Sheet 29 of 180

PLAN
Scale 1" = 40'
DATE 11/23
PROJECT
DRAWN BY
CHECKED BY
APPROVED BY

PROFILE
Scale 1" = 10'
DATE 11/23
PROJECT
DRAWN BY
CHECKED BY
APPROVED BY



BM #16 510 12" Birch 180' Lt of 36 292+10 Elev 44091
BM #17 318 36 Elm 190' Lt of 36 299+00 Elev 44721

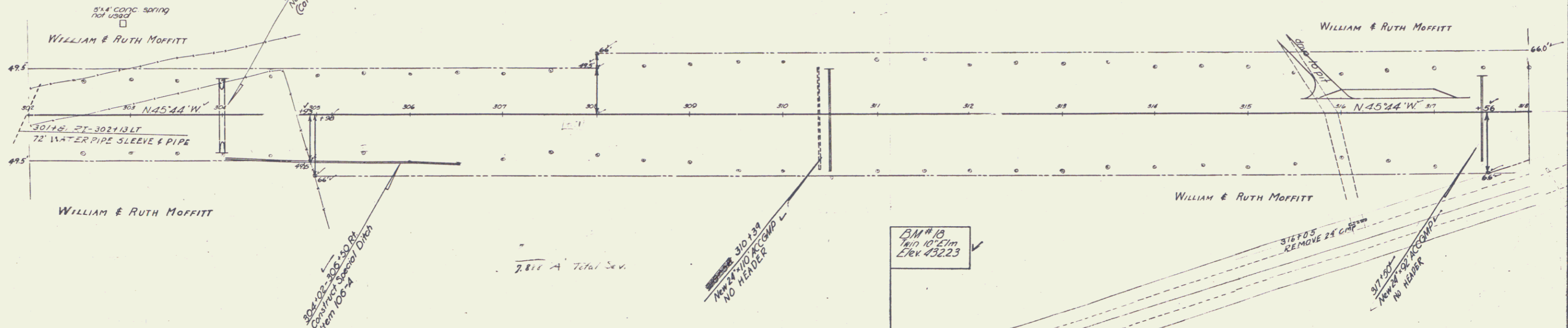
No. F 230(2)
Sheet 30 of 180

PLANK 3-ARD RAIL
303+93 - 304+12 RT
303+90 - 304+14 LI

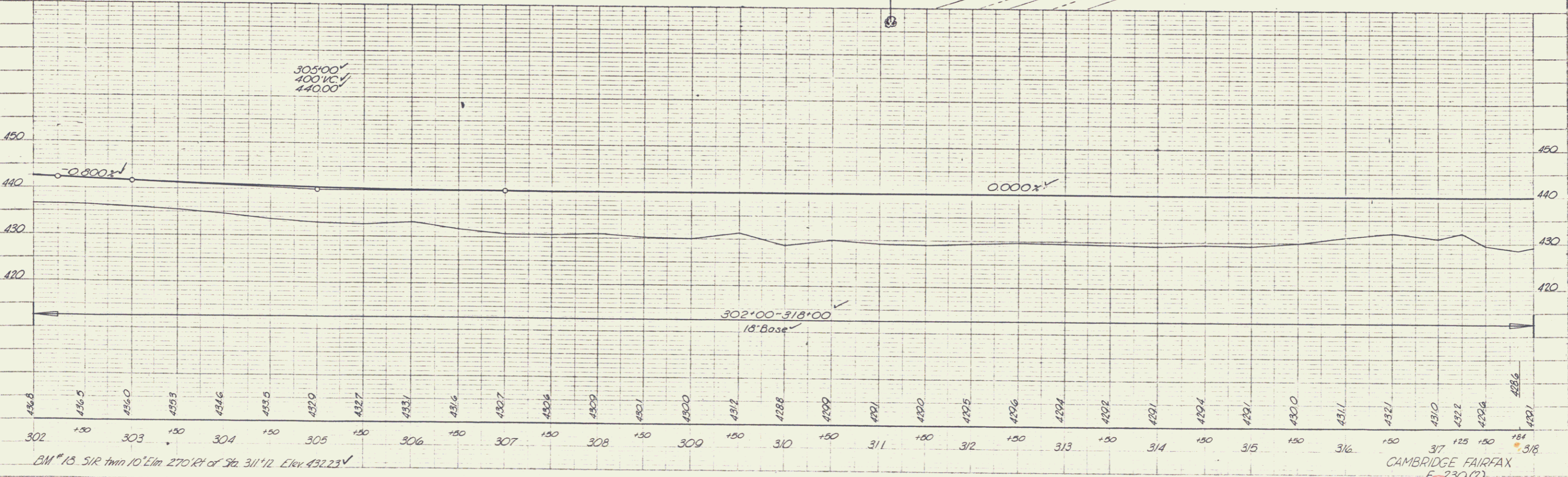
| PARCEL | INSTR. | DATE | GRANTOR | GRANTEE | RECORDED | BOOK | PAGE | DATE | REMARKS |
|--------|--------|----------|------------------------|------------|----------|------|------|---------|-----------------------|
| 11 | W.D.E. | 12-22-54 | WILLIAM & RUTH MOFFITT | ST. OF VT. | FAIRFAX | 36 | 272 | 12-9-55 | SEE ALSO SHEETS 30#32 |

#11
5.39 ACRES±
STA. 298+80 - 318+65

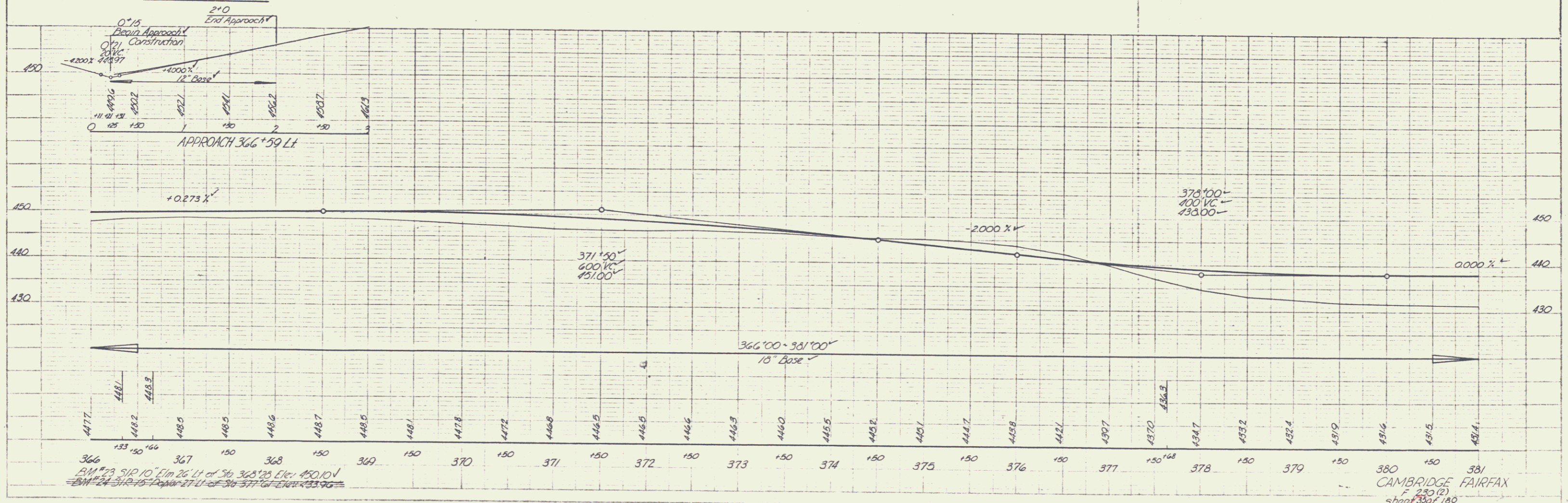
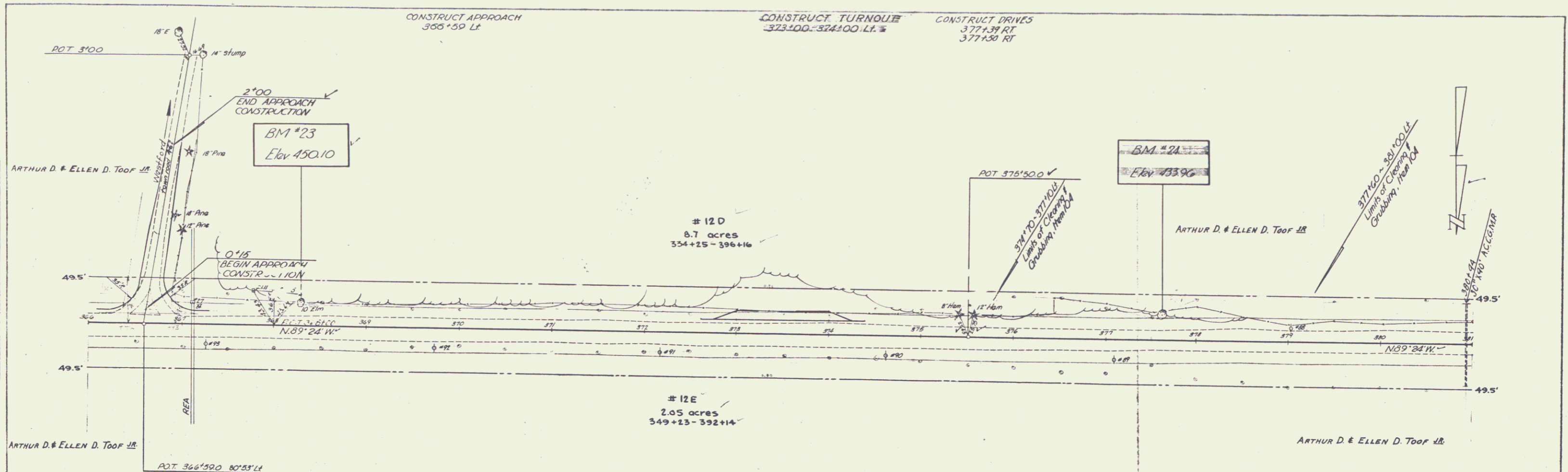
PLAN
DATE 7/23/55
BY L.P.H.



PLAN
DATE 7/23/55
BY L.P.H.



CAMBRIDGE FAIRFAX
F-230(2)
sheet 31 of 180



PLAN
 DATE BOOK
 11/83
 300-2079
 1183
 Traced
 I. Pratt

PLAN
 DATE BOOK
 11/83
 300-2079
 1183
 Traced
 I. Pratt

BM #23 512'10" E in 26' LT of 366'59' ELEV 450.10
 BM #24 312'15" E in 27' LT of 366'59' ELEV 433.96

CAMBRIDGE FAIRFAX
 250 (2)
 sheet 300 of 180

