

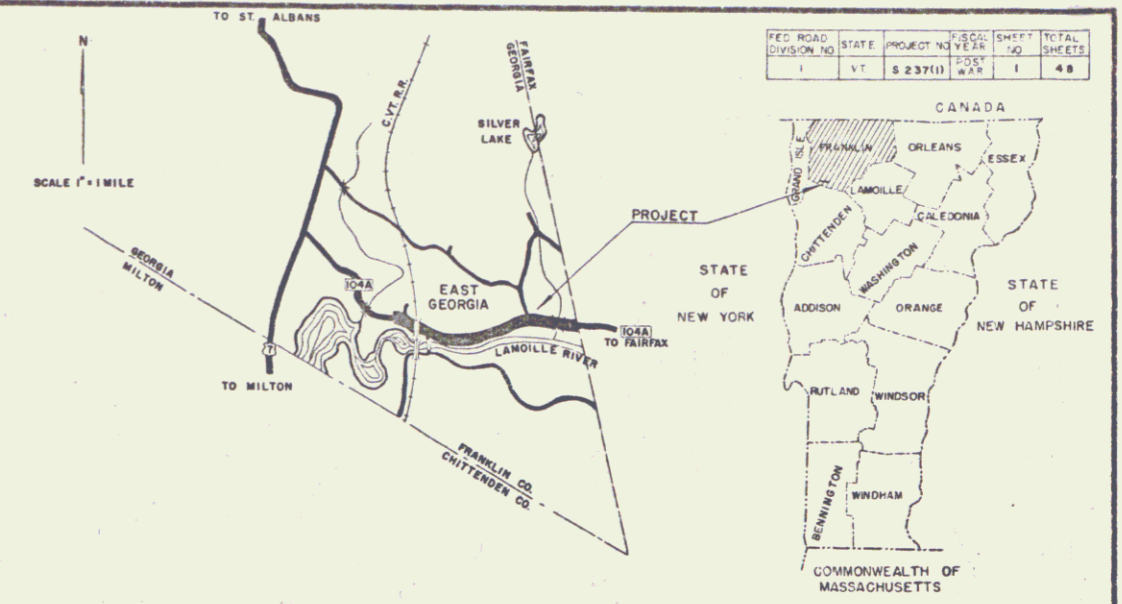
INDEX OF SHEETS

SHEET NO.	TITLE PAGE
1	TYPICAL CROSS-SECTION OF IMPROVEMENT SINGLE "B" COAT OF CUTBACK ASPHALT WITH CRUSHED PEASTONE - ITEM 314-B
2	QUANTITY SHEET (ITEMS)
3	QUANTITY SHEET (DRAINAGE)
4	QUANTITY SHEET (EARTHWORK)
5-7	EARTHWORK SHEETS
8-14	PLAN & PROFILE SHEETS
15	STANDARD STRUCTURE SHEET R S 56-1 (BANK NO)
16	STANDARD STRUCTURE SHEET R S 56-3 (MARKERS & STEEL GUIDE POSTS)
17	STANDARD STRUCTURE SHEET R S 56-4 (UNDER-DRAIN & C.R.M.)
18	STANDARD STRUCTURE SHEET R S 56-6 (SLOPE GRADING)
19	STANDARD STRUCTURE SHEET R S 56-11 (THREE CABLE GUARD RAIL)
20	STANDARD STRUCTURE SHEET R S 56-12 (BARRICADES, SIGNS & LIGHTS)
21	STANDARD STRUCTURE SHEET R S 56-14 (PRECAST R.C.P. DROP INLET & COVER)
22-48	CROSS-SECTION SHEETS

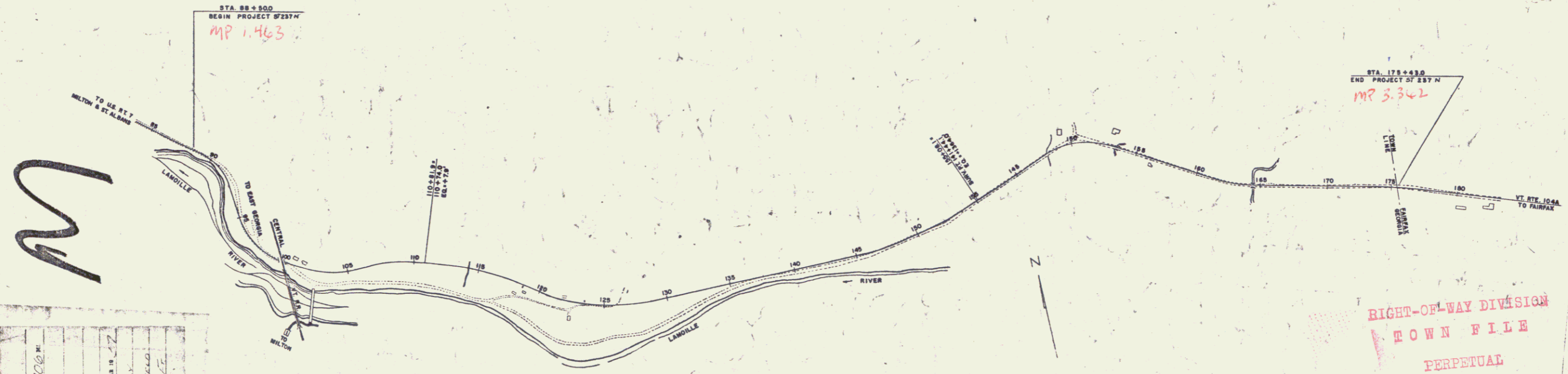
**STATE OF VERMONT
DEPARTMENT OF HIGHWAYS
PROPOSED IMPROVEMENT**

**TOWN OF GEORGIA
COUNTY OF FRANKLIN
VERMONT ROUTE 104A
EAST GEORGIA - FAIRFAX ROAD**

PROJECT NAME AND NUMBER GEORGIA ST 237 N	TYPE Single Tr.Ct.	PAVT AREA 22,201 SY
RECORD PLANS		
DEASTONE - Demers-Wiucoski Vt.	METAL PIPE - N.E. Metal Pipe Co.	
ASPHALT - Barrett - Warren, Mass.	STEEL GUIDE POSTS - U.S. Steel	
SIT CONC. - C. & G. of Burlington Vt.	GUARD RAIL - U.S. Steel	
R.C.P. - Vt. Conc. Pipe-Wiucoski Vt.	GRAVEL - Oviatt - Fairfax Vt.	
CONTRACTOR - Lucien A. Demers	CONTRACT DATED - Oct. 8, 1956	
RESIDENT ENGINEER - Robert S. Nelson	CONTRACT STARTED - Oct. 8, 1956	
INSPECTORS - C. Hanson & G. P. ...	CONTRACT COMPLETED - Oct. 14, 1957	
RECORD PLANS - R.S. Nelson	CONTRACT ACCEPTED - Oct. 29, 1957	



BEGINNING AT A POINT APPROXIMATELY 10,064.9 FEET WEST OF THE GEORGIA-FAIRFIELD TOWN LINE AND EXTENDING EASTERLY 10,064.9 FEET.
LENGTH OF PROJECT 10,064.9 FEET = 1.906 MILES.



COUNTY	GEORGIA
TOWN	ST. 237 N
LENGTH	1.906 MI.
DATE	1957
CONTRACTOR	LUCIEN A. DEMERS
LOCATION	East Georgia - Fairfax Road, Town of Georgia, Franklin County, Vermont
CONTRACT COMPLETED	10-14-1957

GROUND ELEVATION	DATUM	SEA LEVEL
GRADE ELEVATION	DATUM	SEA LEVEL
CURVE DATA		
DEFLECTION OF ANGLE	Δ	
DEGREE OF CURVE	D	
RADIUS OF CURVE	R	
TANGENT DISTANCE	T	
LENGTH OF CURVE	L	
EXTERNAL DISTANCE	E	
POINT OF INTERSECTION	P.I.	
POINT OF CURVE	P.C.	
POINT OF TANGENT	P.T.	
POINT ON TANGENT	P.O.T.	
POINT ON SUB-TANGENT	P.O.S.T.	

SCALES

TITLE	1" = 400'
TYPICAL	1" = 2'
PLAN	1" = 50'
PROFILE HORIZONTAL	1" = 50'
PROFILE VERTICAL	1" = 10'
CROSS-SECTIONS	1" = 5' 8 1/2"

**RIGHT-OF-WAY DIVISION
TOWN FILE
PERPETUAL
Town of Georgia
(To Be Returned To R.O.W. Division)**

NOTE: ANY FURTHER REVISIONS CONCERNING THESE PLANS SHOULD BE MADE BY THE FIELD ENGINEER OR THE ESTIMATOR. EITHER THE FIELD ENGINEER OR THE ESTIMATOR SHOULD SIGN THE REVISIONS.

THESE PLANS ARE SUBJECT TO SUCH REVISIONS AS MAY BE REQUIRED BY THE BUREAU OF PUBLIC ROADS OR THE COMMISSIONER OF HIGHWAYS.

CONSTRUCTION IS TO BE CARRIED ON IN ACCORDANCE WITH THE STANDARD SPECIFICATIONS FOR HIGHWAY AND BRIDGE CONSTRUCTION OF JANUARY 1956, SUBMITTED TO THE BUREAU OF PUBLIC ROADS FOR APPROVAL ON APRIL 9, 1956 INCLUDING ALL SUBSEQUENT APPROVED REVISIONS AND SUCH REVISED SPECIFICATIONS AND SPECIAL PROVISIONS AS ARE SUBMITTED WITH THE PLANS.

DEPARTMENT OF COMMERCE
BUREAU OF PUBLIC ROADS

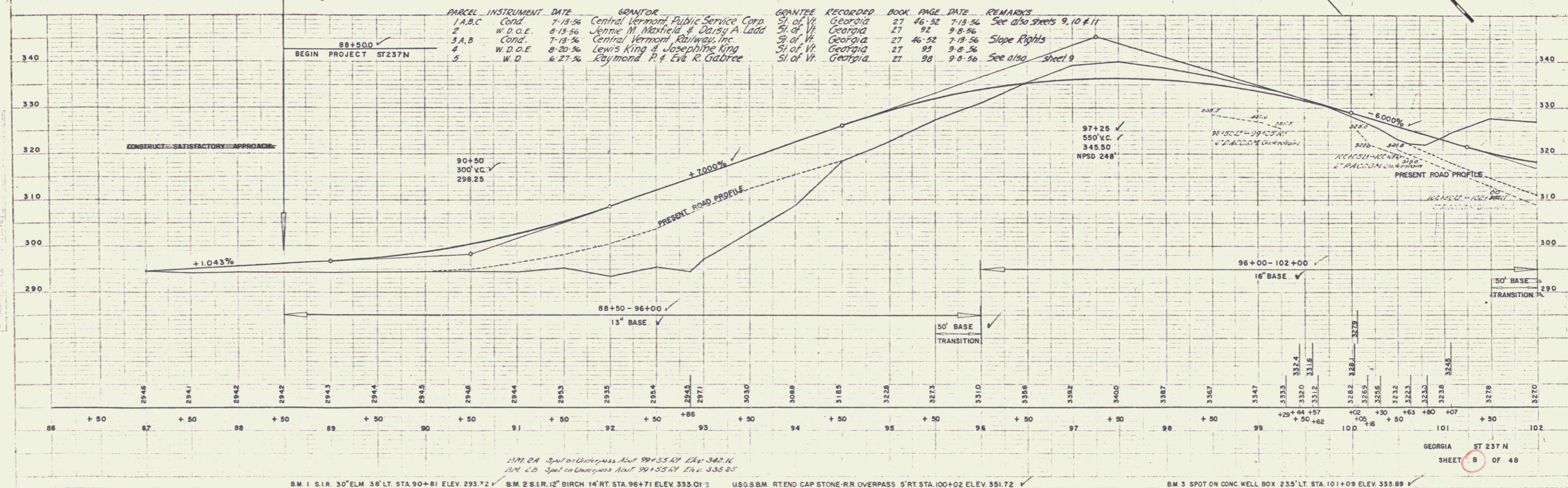
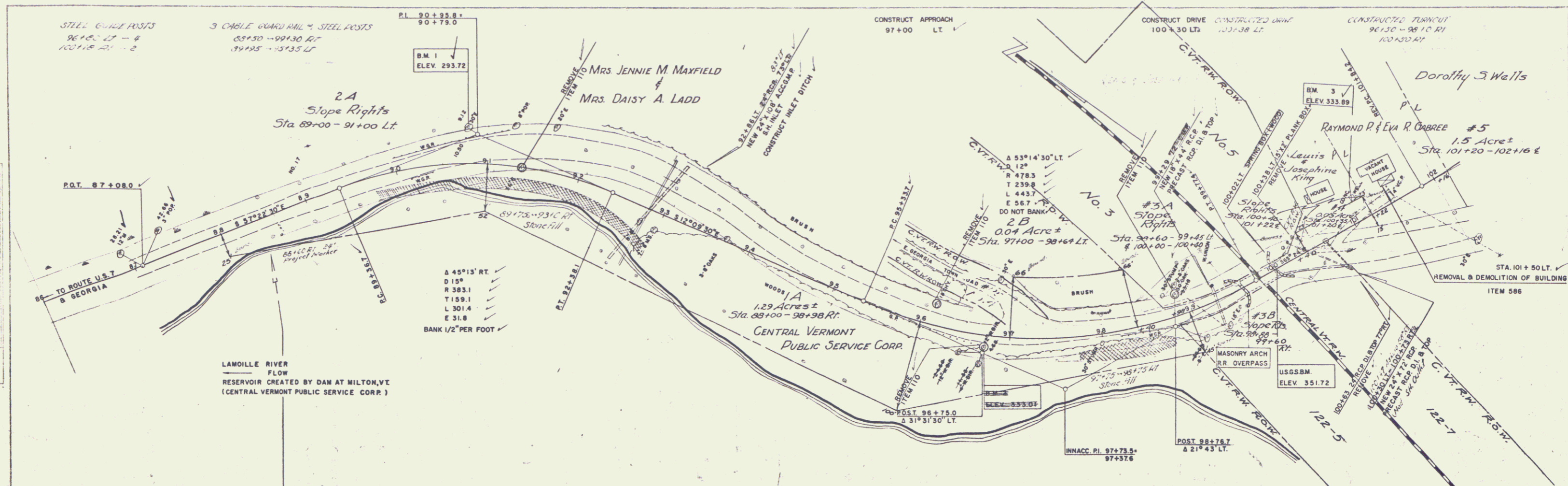
Pin # 00R224

PROJECT ST. NO. 237 N

SHEET 1 OF 48 SHEETS

WEBSTER-MARTIN, INC. CONSULTING ENGINEERS
SOUTH BURLINGTON, VERMONT

APPROVED <i>[Signature]</i> CONSTRUCTION ENGINEER DATE Jan 30 1957	APPROVED <i>[Signature]</i> SECONDARY ENGINEER DATE Nov 26 1956	APPROVED <i>[Signature]</i> DISTRICT ENGINEER DATE Jan 26 1957	APPROVED <i>[Signature]</i> DISTRICT ENGINEER DATE Jan 26 1957	APPROVED <i>[Signature]</i> CHIEF ENGINEER DATE Jan 30 1957
---	--	---	---	--



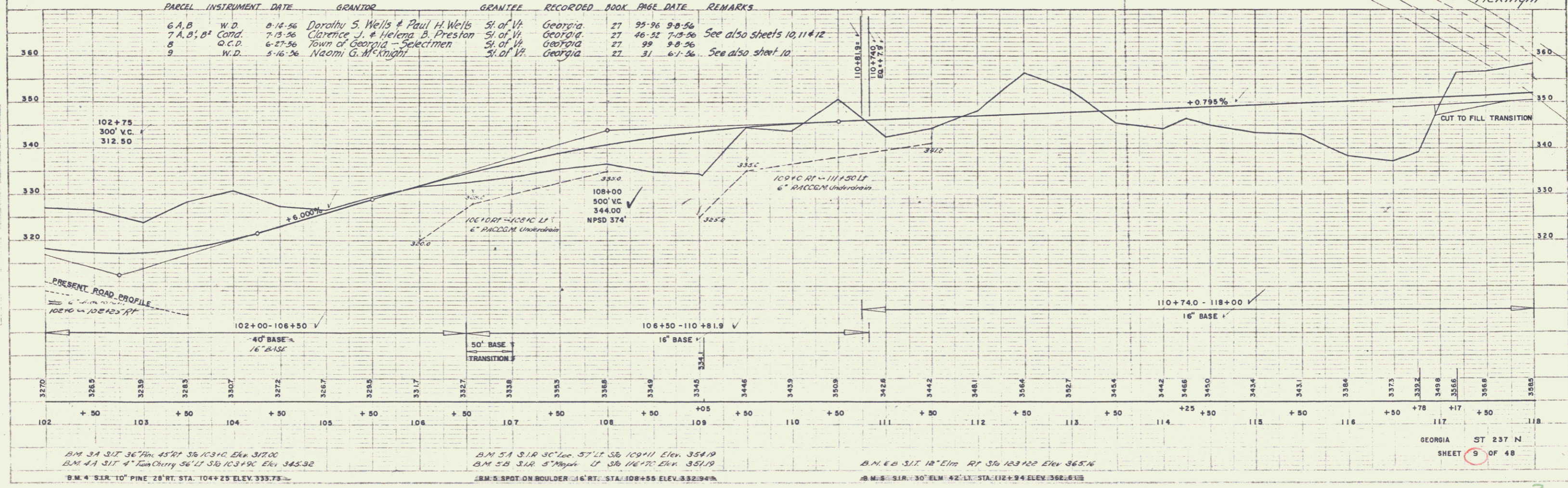
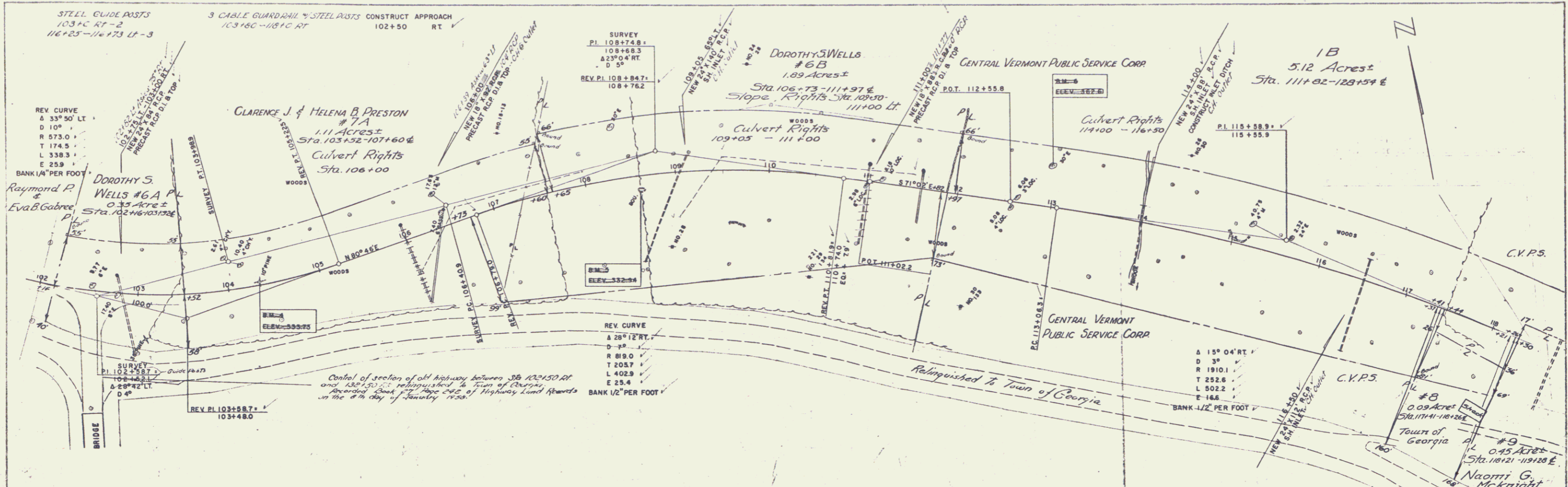
WEBSTER-MARTIN INC.
11-56
FILE NO. 11-56

WEBSTER-MARTIN INC.
11-56
FILE NO. 11-56

BM 1 S.I.R. 30' ELM 38' LT. STA. 90+81 ELEV. 293.72
 B.M. 2 S.I.R. 12" BIRCH 14' RT. STA. 96+71 ELEV. 333.01
 U.S.G.S. B.M. RTEND CAP STONE-R.R. OVERPASS 5' RT. STA. 100+02 ELEV. 351.72
 BM 3 SPOT ON CONC. WELL BOX 2.35' LT. STA. 101+09 ELEV. 333.89

GEORGIA ST 237 N
SHEET 8 OF 48

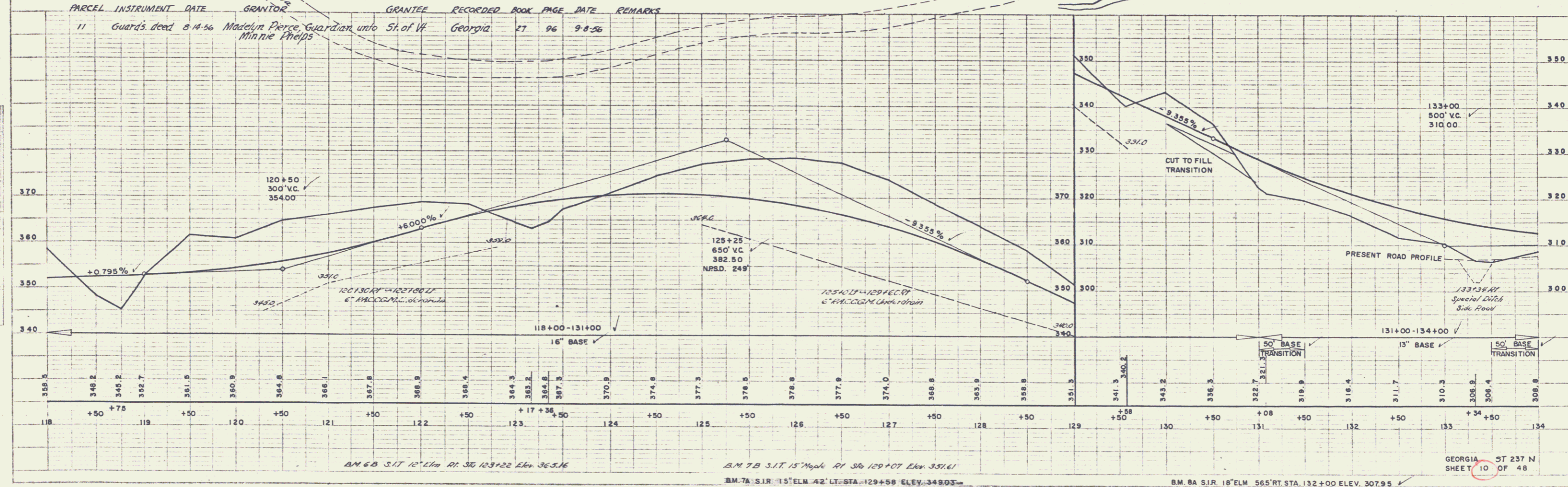
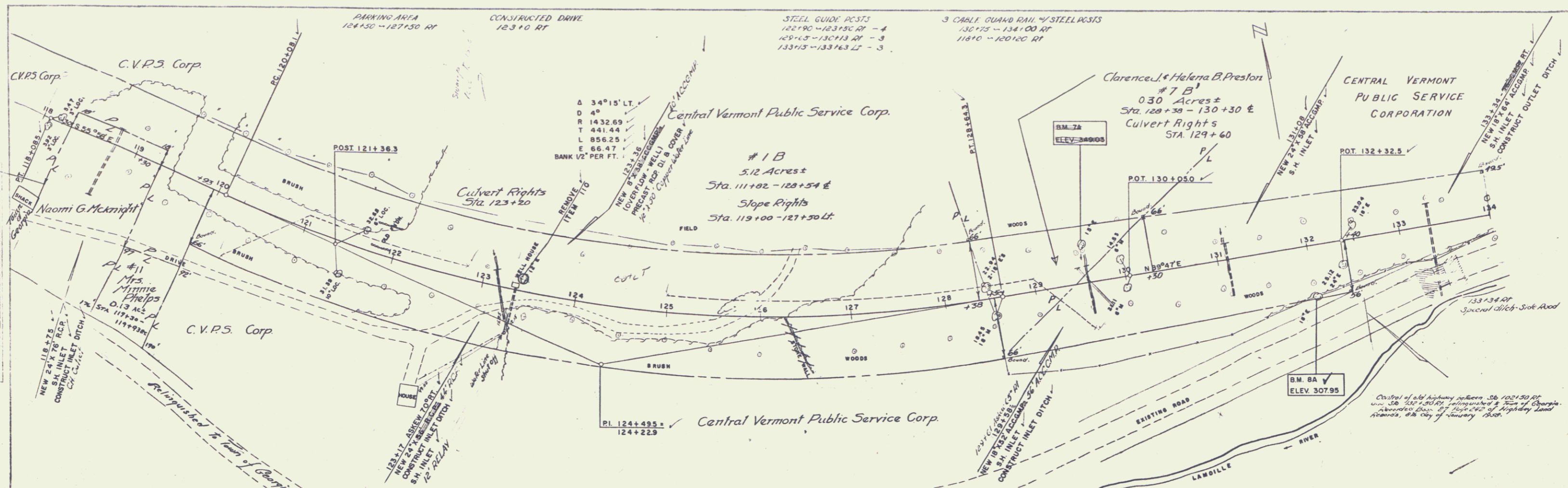
2



PLAN
 CHAS. T. MAIN, INC.
 VERMONT - MARTIN INC.
 11-25

PROFILE
 CHAS. T. MAIN, INC.
 VERMONT - MARTIN INC.
 11-25

B.M. 3A S.I.T. 36" PINE 45' RT. STA. 103+90 ELEV. 337.00
 B.M. 4A S.I.T. 4" Iron Cherry 36" LT. STA. 103+90 ELEV. 343.32
 B.M. 5A S.I.R. 30" Loc. 57' LT. STA. 104+11 ELEV. 354.19
 B.M. 5B S.I.R. 5" Maple LT. STA. 106+17 ELEV. 351.19
 B.M. 5C S.I.T. 12" Elm RT. STA. 103+122 ELEV. 365.16
 B.M. 5D S.I.R. 30" Elm 42' LT. STA. 112+94 ELEV. 368.615



WEBSTER-MARTIN, INC.
 5-1
 5-16
 11/11/11

PROFILE
 8-54
 11/11/11

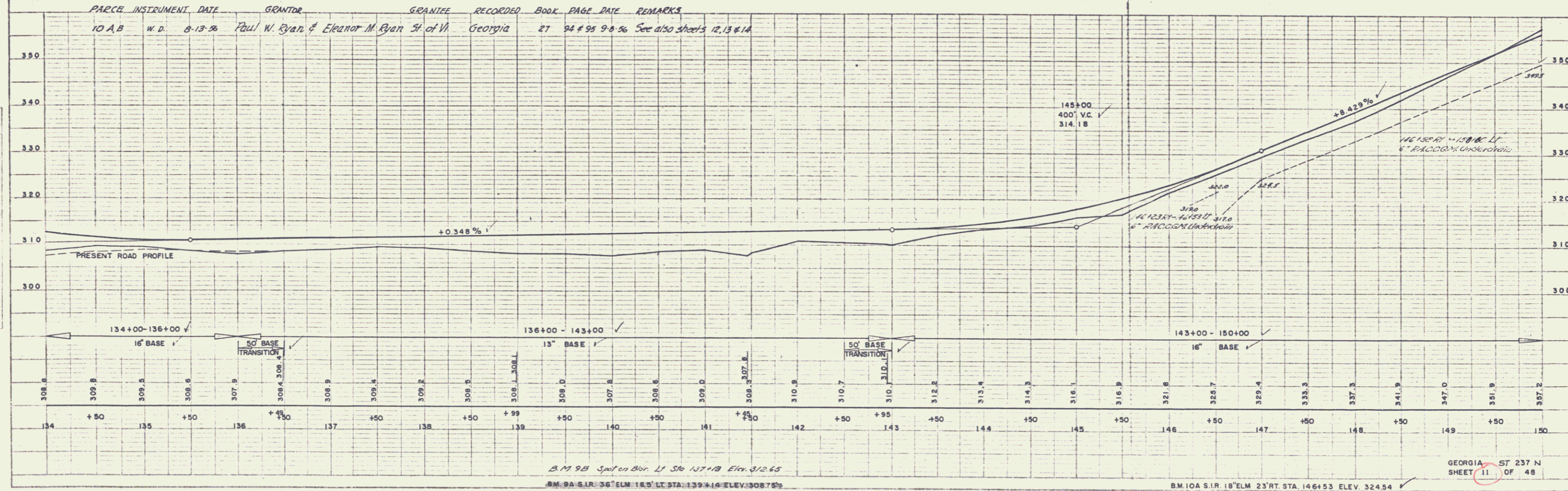
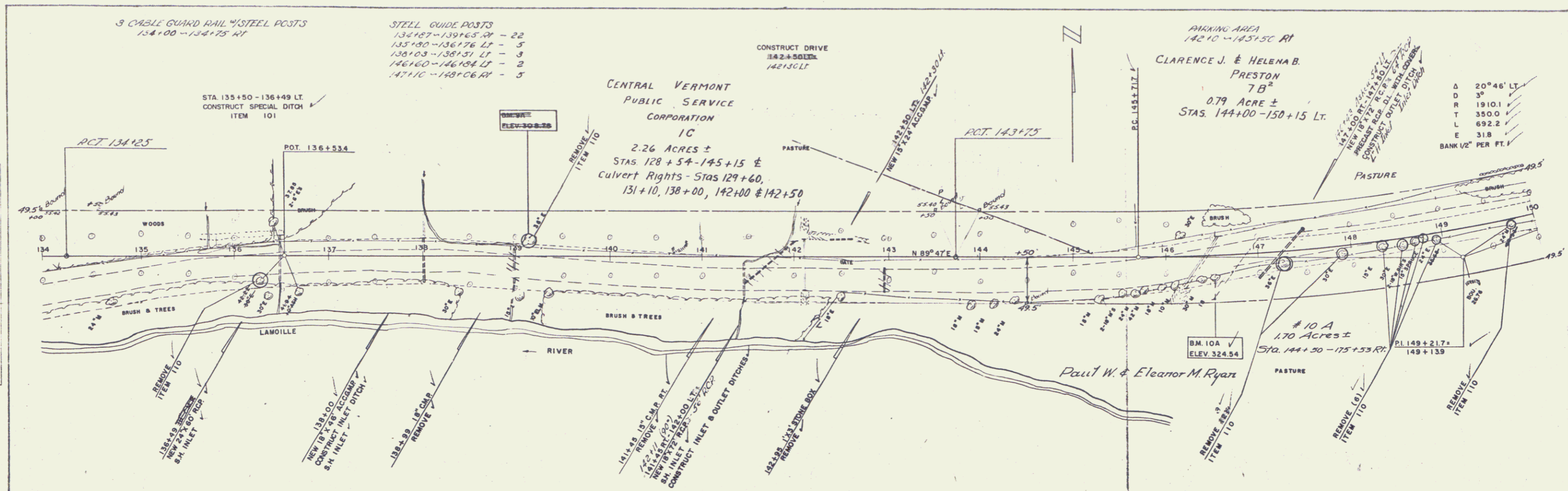
BM 6 B S.I.R. 12' ELM. RI. 30' 123+22 ELEV. 363.16

BM 7 A S.I.R. 15' Maple RI. 36' 129+07 ELEV. 331.61

BM 8 A S.I.R. 18' ELM. 56.5' RT. STA. 132+00 ELEV. 307.95

GEORGIA ST 237 N
 SHEET 10 OF 48

4



WESTER-MARTIN, INC.
 5-5
 NOTE BOOK
 NO. 101
 DATE 10/1/58

WESTER-MARTIN, INC.
 5-5
 PROFILE
 DATE 10/1/58

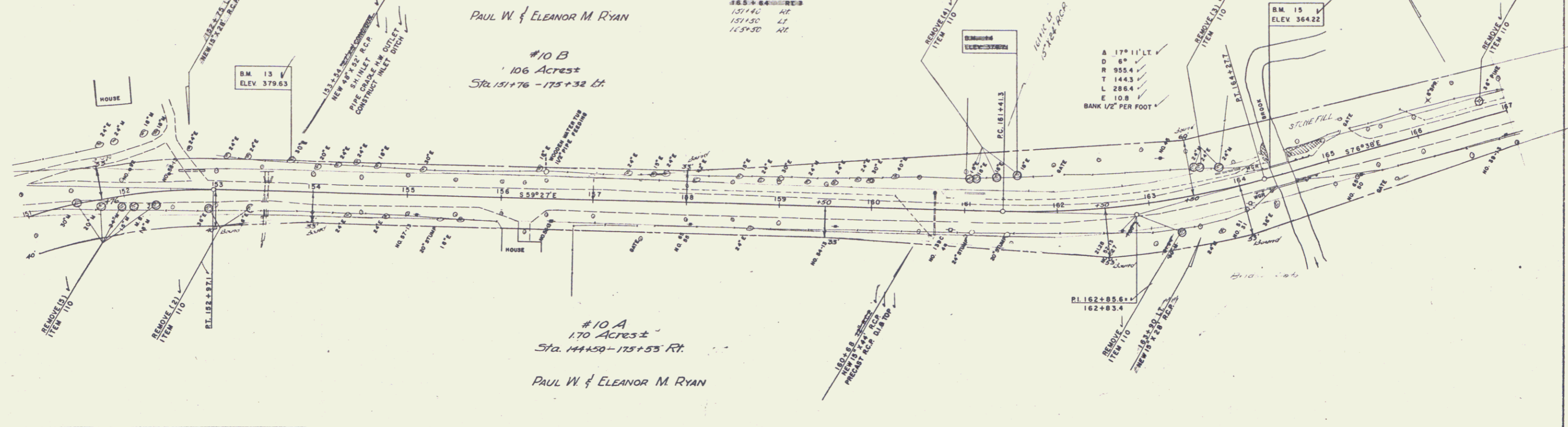
3 CHAIN C-AND RAIL 4 STEEL PASTS
 164107 - 164130 LT
 164130 - 164133 RT
 164160 - 164160 LT
 164163 - 164163 RT

STEEL GUIDE POSTS
 151123-151149 LT - 5'
 153116 - 153172 RT - 4'
 153180 - 153162 LT - 4'
 140135 RT

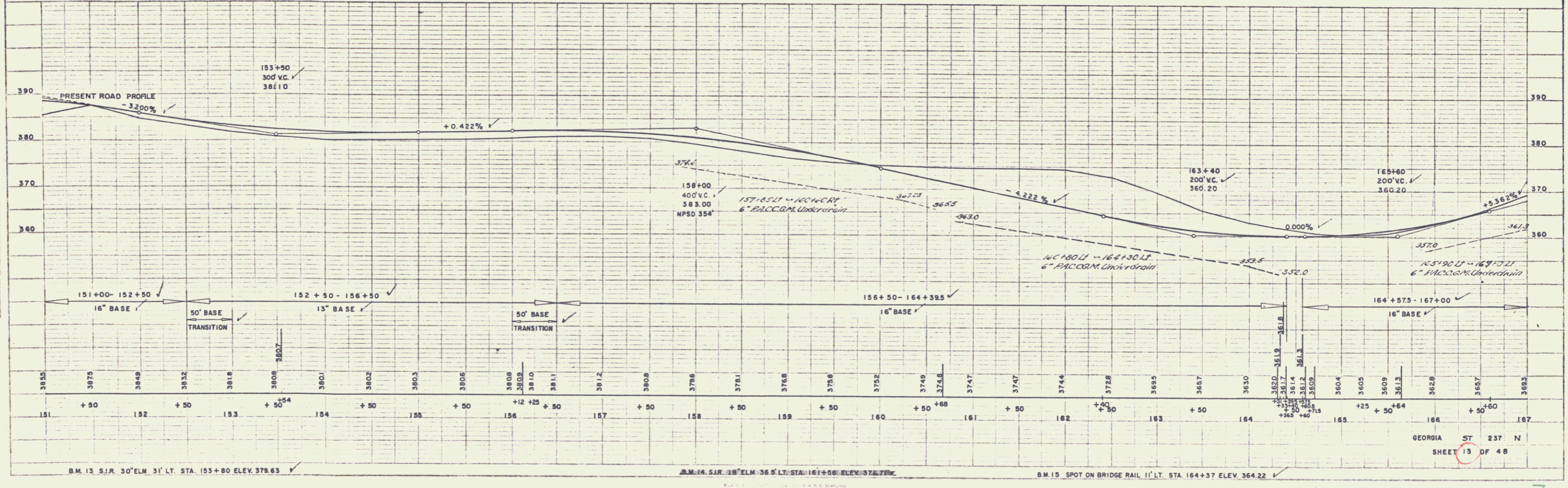
CONSTRUCT DRIVES
 152+75 LT ✓
 156+25 RT ✓
 157+50 RT ✓
 163+90 LT ✓
 165+25 LT ✓
 165+84 RT ✓
 151140 RT
 151150 LT
 143130 RT

ITEM 381
 BITUMINOUS CONCRETE PAVEMENT
 FOR BRIDGE FLOORS
 164+36.5 - 164+60.5

PLAN
 ELEVATION
 DISTANCE
 BEARING
 CURVE DATA
 POINTS
 INTERSECTIONS
 ADJUSTMENTS
 NOTES
 DATE
 DRAWN BY
 CHECKED BY
 SCALE



PROFILE
 ELEVATION
 DISTANCE
 BEARING
 CURVE DATA
 POINTS
 INTERSECTIONS
 ADJUSTMENTS
 NOTES
 DATE
 DRAWN BY
 CHECKED BY
 SCALE



GEORGIA ST 237 N
 SHEET 13 OF 48

7

STILL OUM. 10373
160112-160184.01 - 4
160126-160181.11 - 4

PLAN
NOTE BOOK
WESTER-MARTIN INC.
11-88
10-1-88

PROJECT
WESTER-MARTIN INC.
11-88
10-1-88

