

INDEX OF SHEETS

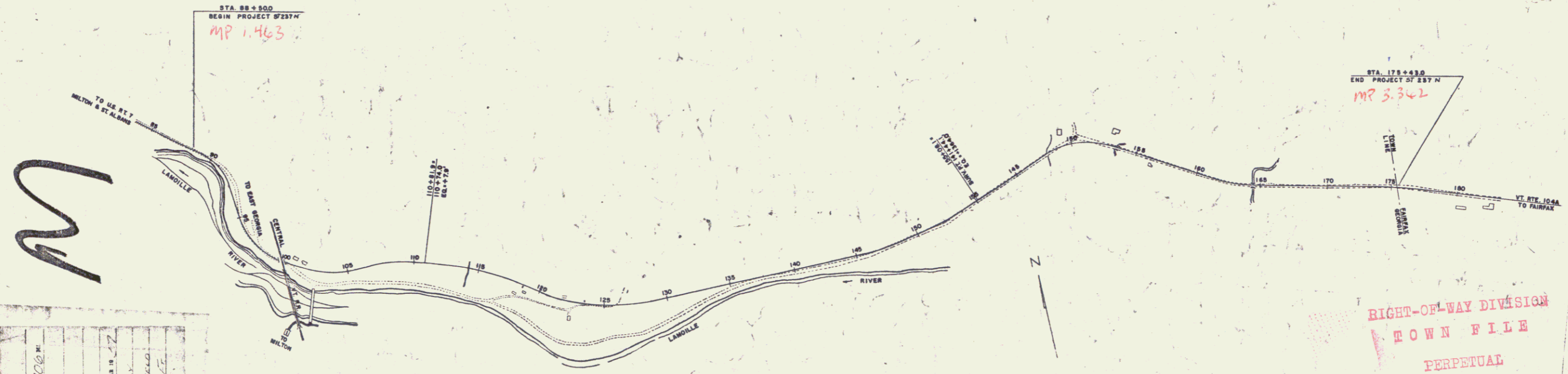
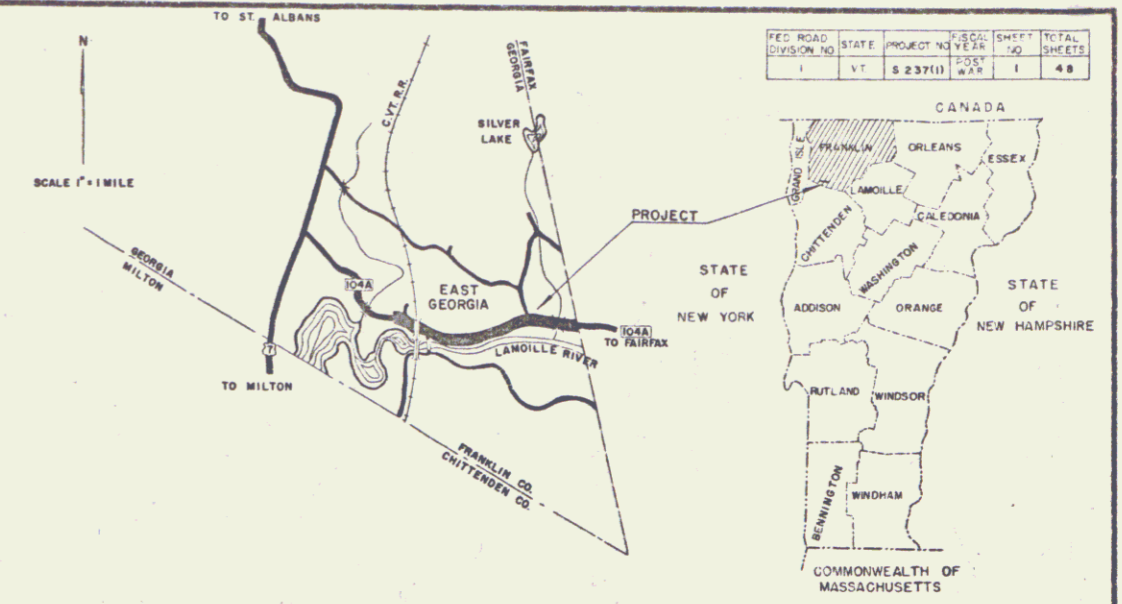
SHEET NO.	TITLE PAGE
1	TYPICAL CROSS-SECTION OF IMPROVEMENT SINGLE "B" COAT OF CUTBACK ASPHALT WITH CRUSHED PEASTONE - ITEM 314-B
2	QUANTITY SHEET (ITEMS)
3	QUANTITY SHEET (DRAINAGE)
4	EARTHWORK SHEETS
5-7	PLAN & PROFILE SHEETS
8-14	STANDARD STRUCTURE SHEET R S 56-1 (BANK NO)
15	STANDARD STRUCTURE SHEET R S 56-3 (MARKERS & STEEL GUIDE POSTS)
16	STANDARD STRUCTURE SHEET R S 56-4 (UNDER-DRAIN & C.R.M.)
17	STANDARD STRUCTURE SHEET R S 56-6 (SLOPE GRADING)
18	STANDARD STRUCTURE SHEET R S 56-11 (THREE CABLE GUARD RAIL)
19	STANDARD STRUCTURE SHEET R S 56-12 (BARRICADES, SIGNS & LIGHTS)
20	STANDARD STRUCTURE SHEET R S 56 14 (PRECAST R.C.P. DROP INLET & COVER)
21	CROSS-SECTION SHEETS

PROJECT NAME AND NUMBER GEORGIA ST 237 N	TYPE Single Tr.Ct.	PAVT AREA 22,201 SY
RECORD PLANS		
DEASTONE - Demers-Wiucoski Vt.	METAL PIPE - N.E. Metal Pipe Co.	
ASPHALT - Barrett - Warren, Mass.	STEEL GUIDE POSTS - U.S. Steel	
SIT CONC. - C. & G. of Burlington Vt.	GUARD RAIL - U.S. Steel	
R.C.P. - Vt. Conc. Pipe-Wiucoski Vt.	GRAVEL - Oviatt - Fairfor Vt.	
CONTRACTOR - Lucien A. Demers	CONTRACT DATED - Oct. 8, 1956	
RESIDENT ENGINEER - Robert S. Nelson	CONTRACT STARTED - Oct. 8, 1956	
INSPECTORS - C. Hanson & G. P. ...	CONTRACT COMPLETED - Oct. 14, 1957	
RECORD PLANS - R.S. Nelson	CONTRACT ACCEPTED - Oct. 29, 1957	

STATE OF VERMONT
DEPARTMENT OF HIGHWAYS
PROPOSED IMPROVEMENT

TOWN OF GEORGIA
COUNTY OF FRANKLIN
VERMONT ROUTE 104A
EAST GEORGIA - FAIRFAX ROAD

BEGINNING AT A POINT APPROXIMATELY 10,064.9 FEET WEST OF THE GEORGIA-FAIRFIELD TOWN LINE AND EXTENDING EASTERLY 10,064.9 FEET.
LENGTH OF PROJECT 10,064.9 FEET * 1.906 MILES.



COUNTY	GEORGIA
TOWN	ST. 237 N
LENGTH	1,906 FT
TYPE	Single Tr.Ct.
CONTRACTOR	LUCIEN A. DEMERS
LOCATION	East Georgia - Fairfax Road, Franklin Co., Vermont
DATE	10-14-1957

GROUND ELEVATION	DATUM	SEA LEVEL
GRADE ELEVATION	DATUM	SEA LEVEL
CURVE DATA		
DEFLECTION OF ANGLE	Δ	
DEGREE OF CURVE	D	
RADIUS OF CURVE	R	
TANGENT DISTANCE	T	
LENGTH OF CURVE	L	
EXTERNAL DISTANCE	E	
POINT OF INTERSECTION	P.I.	
POINT OF CURVE	P.C.	
POINT OF TANGENT	P.T.	
POINT ON TANGENT	P.O.T.	
POINT ON SUB-TANGENT	P.O.S.T.	

SCALES

TITLE	1" = 400'
TYPICAL	1" = 2'
PLAN	1" = 50'
PROFILE HORIZONTAL	1" = 50'
PROFILE VERTICAL	1" = 10'
CROSS-SECTIONS	1" = 5' 8 1/2"

RIGHT-OF-WAY DIVISION
TOWN FILE
PERPETUAL
Town of VT 104A
(To Be Returned To R.O.W. Division)

NOTE: ANY FURTHER REVISIONS CONCERNING THESE PLANS SHOULD BE MADE BY THE FIELD OFFICE OF THE BUREAU OF PUBLIC ROADS OR THE COMMISSIONER OF HIGHWAYS.

THESE PLANS ARE SUBJECT TO SUCH REVISIONS AS MAY BE REQUIRED BY THE BUREAU OF PUBLIC ROADS OR THE COMMISSIONER OF HIGHWAYS.

CONSTRUCTION IS TO BE CARRIED ON IN ACCORDANCE WITH THE STANDARD SPECIFICATIONS FOR HIGHWAY AND BRIDGE CONSTRUCTION OF JANUARY 1956, SUBMITTED TO THE BUREAU OF PUBLIC ROADS FOR APPROVAL ON APRIL 9, 1956 INCLUDING ALL SUBSEQUENT APPROVED REVISIONS AND SUCH REVISED SPECIFICATIONS AND SPECIAL PROVISIONS AS ARE SUBMITTED WITH THE PLANS.

DEPARTMENT OF COMMERCE
BUREAU OF PUBLIC ROADS

Pin # 00R224

PROJECT ST. NO. 237 N

SHEET 1 OF 48 SHEETS

WEBSTER-MARTIN, INC. CONSULTING ENGINEERS
SOUTH DURLINGTON, VERMONT

APPROVED <i>[Signature]</i> CONSTRUCTION ENGINEER DATE Jan 23 1958	APPROVED <i>[Signature]</i> SECONDARY ENGINEER DATE Nov 26 1956	APPROVED <i>[Signature]</i> DISTRICT ENGINEER DATE Jan 26 1958	APPROVED <i>[Signature]</i> DISTRICT ENGINEER DATE Jan 26 1958	APPROVED <i>[Signature]</i> CHIEF ENGINEER DATE Jan 20 1958
---	--	---	---	--