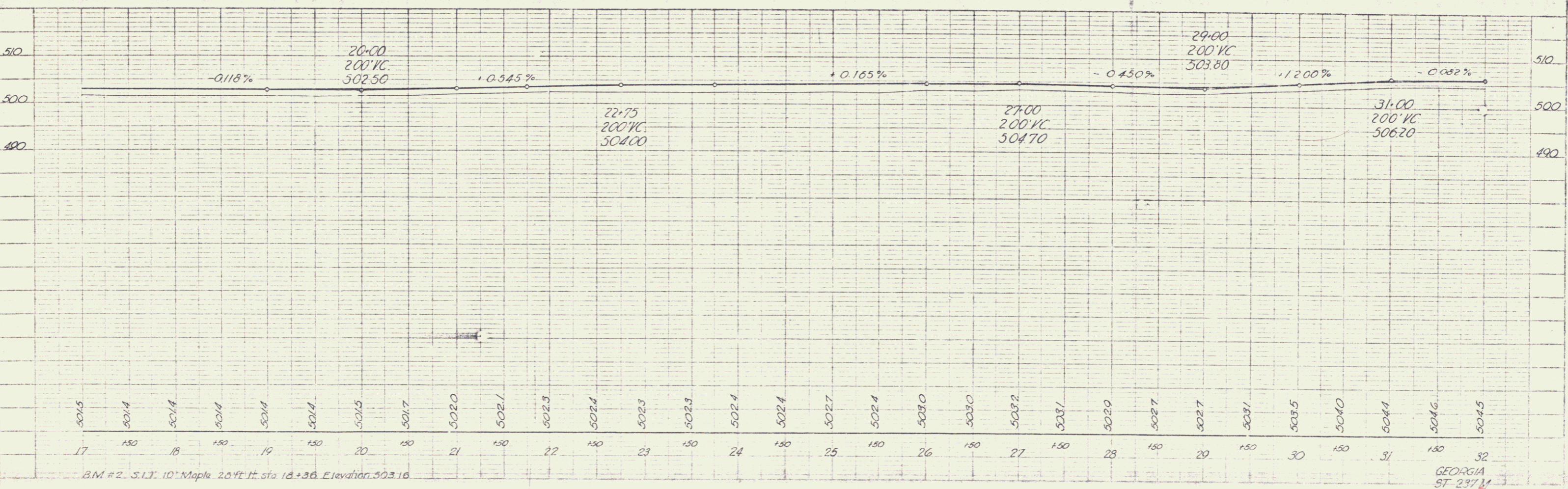
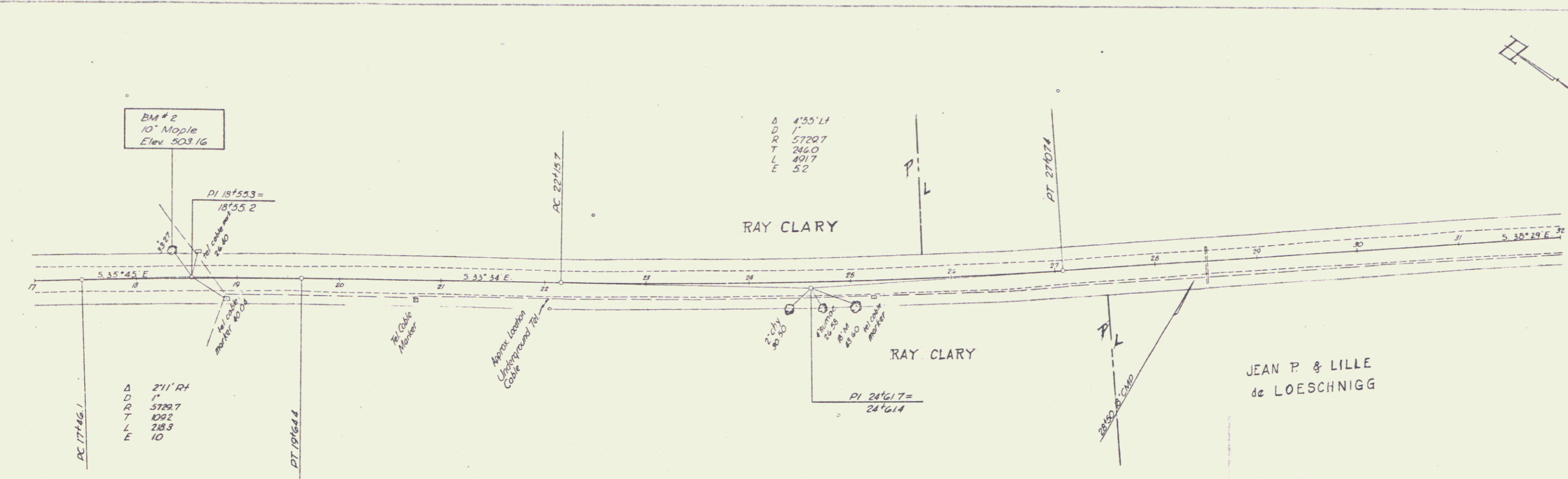


PLAN  
 DATE  
 BY  
 CHECKED  
 TITLE  
 PROJECT  
 SHEET NO.  
 TOTAL SHEETS

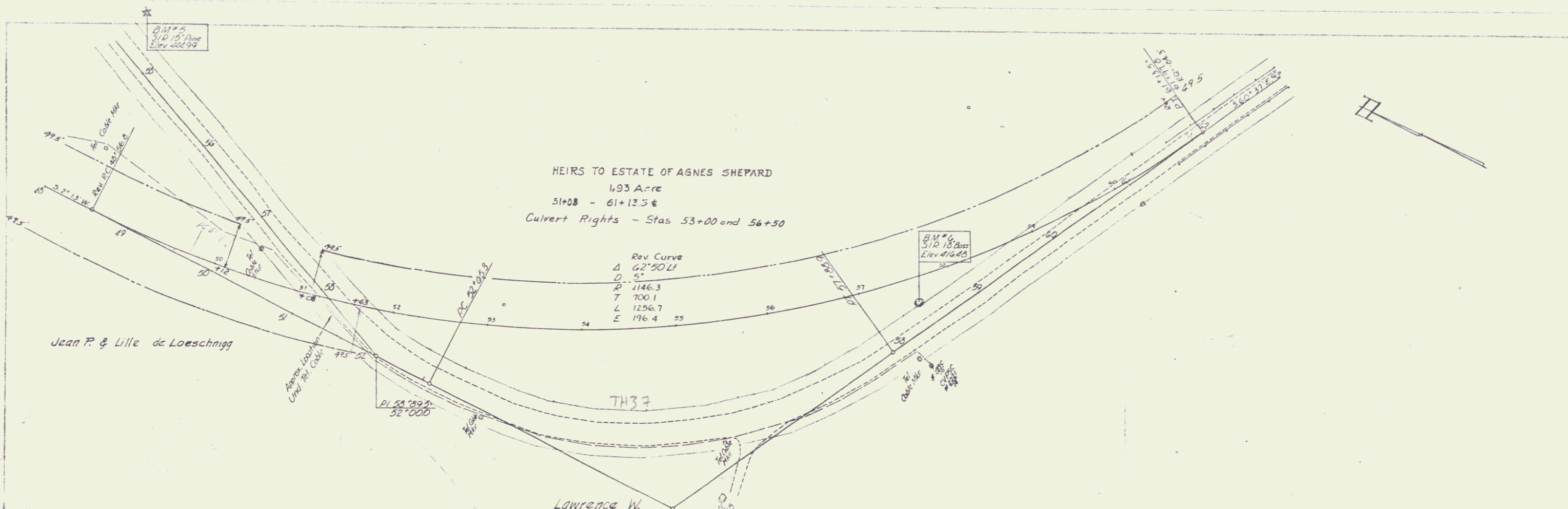
DATE  
 BY  
 CHECKED  
 TITLE  
 PROJECT  
 SHEET NO.  
 TOTAL SHEETS



BM #2, S.L.T. 10' Maple 20.9' H. sta 18+36 Elevation 503.16

GEORGIA  
 ST 297 M  
 SHEET 2



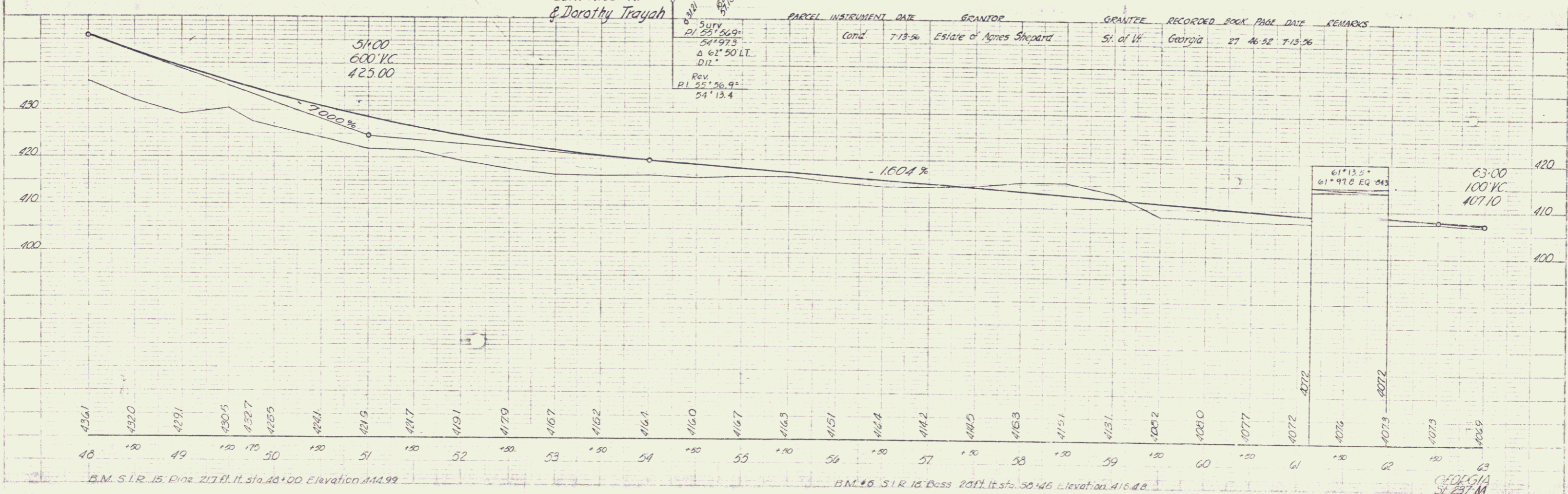


HEIRS TO ESTATE OF AGNES SHEPARD  
 1.93 Acre  
 51+08 - 61+13.5 ±  
 Culvert Rights - Stas 53+00 and 56+50

Rev Curve  
 Δ 62°50.11  
 D 5'  
 P 1146.3  
 T 700.1  
 L 1256.7  
 E 176.4

Sury  
 PI 52°56.9°  
 Δ 62°50.11  
 D 11'  
 Rev  
 PI 55°26.9°  
 Δ 54°13.4

PARCEL	INSURUMENT DATE	GRANTOR	GRANTEE	RECORDED BOOK PAGE	DATE	REMARKS
Contd	7-13-56	Estate of Agnes Shepard	St. of W. Georgia	27 46 52	7-13-56	

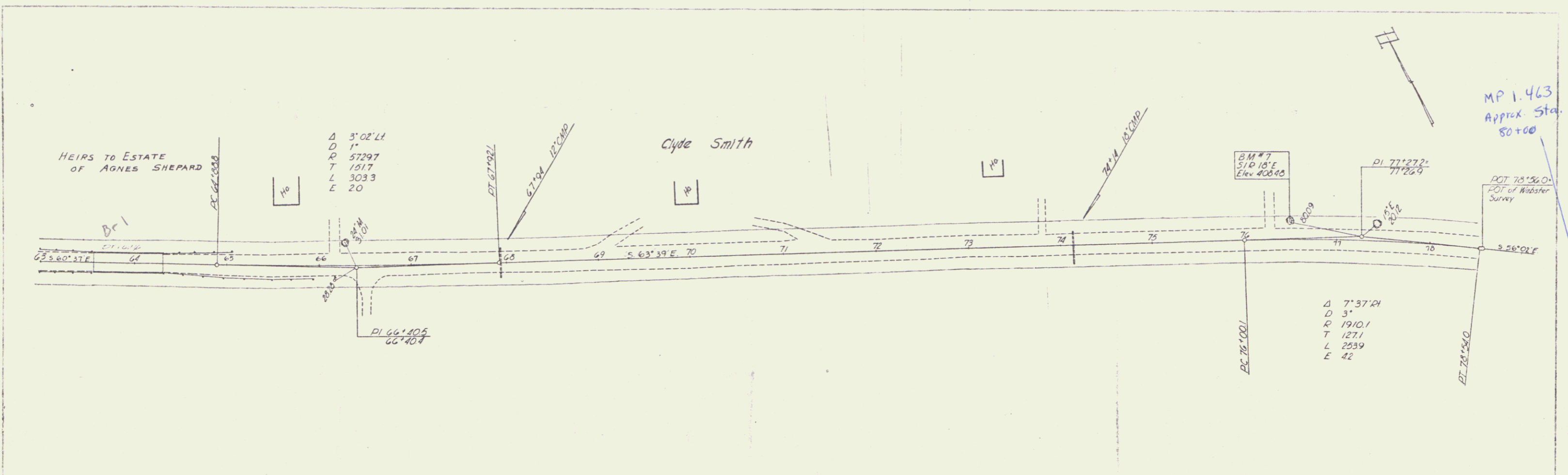


B.M. S.I.R. 15 Pine 217 ft. sta. 48+00 Elevation 414.99

B.M. #6 S.I.R. 18 Bass 217 ft. sta. 56+46 Elevation 416.48

GEORGIA  
 S. 27 M  
 SHEET 4

PLAN  
 SHEET NO. 1-56  
 PROJECT  
 TRAILWAY



PROFILE  
 SHEET NO. 1-56  
 PROJECT  
 TRAILWAY

