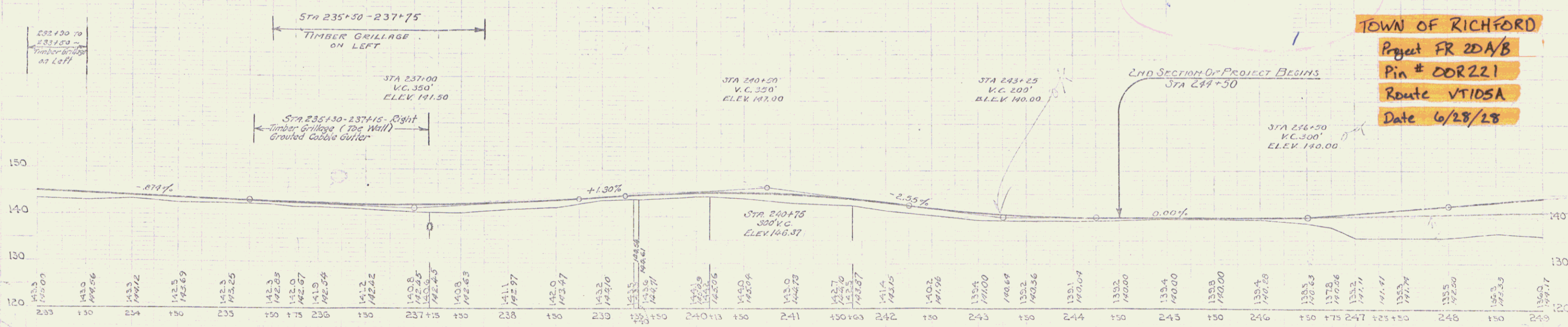
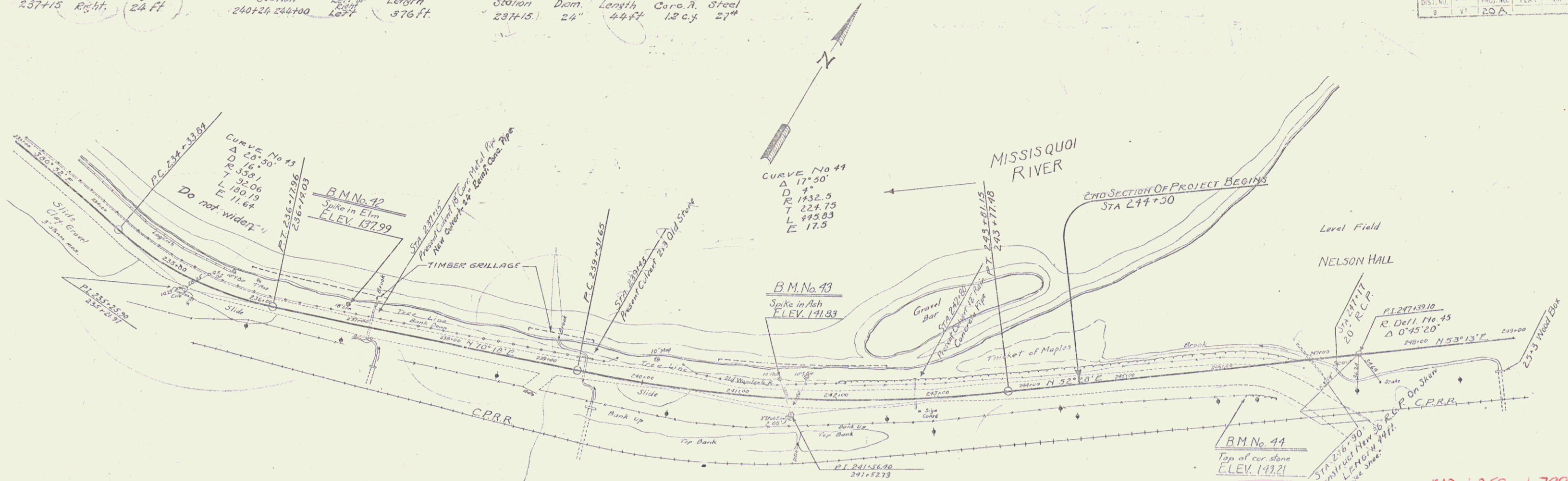


WOOD GUARD RAIL REQUIRED
 Station 237+15 Right Length 24 FT

CABLE GUARD RAIL REQUIRED
 Station 240+24 to 244+00 Left Length 376 FT

NEW REINF CONC PIPE CULV. REQ.
 Station 237+15 Dom. Length 44 FT 1.2 c.y. 27"

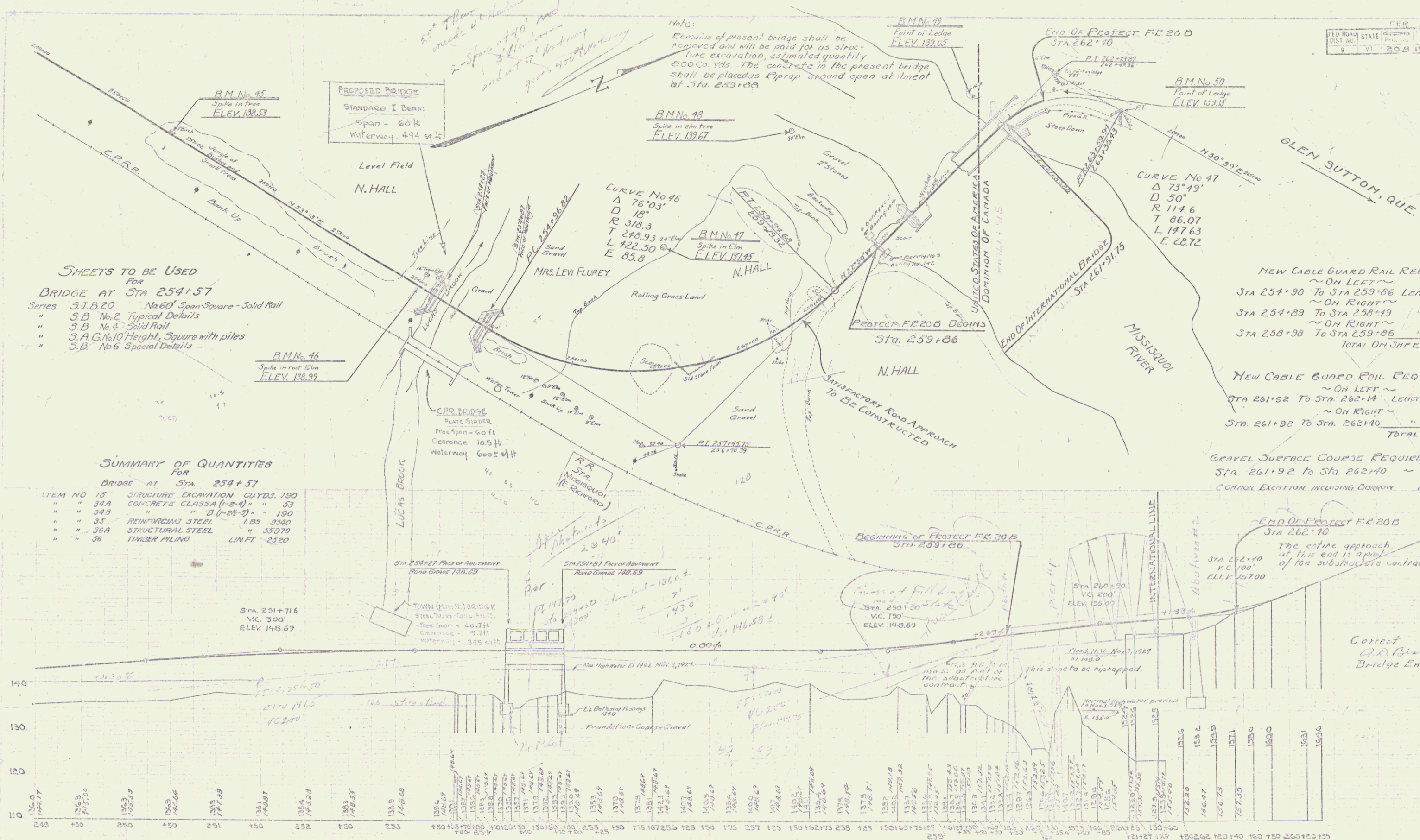
FED. ROAD DIST. NO.	STATE	FED. AID PROJ. NO.	YEAR	SHEET NO.	TOTAL SHEETS
8	VT	20A			



TOWN OF RICHFORD
 Project FR 20A/B
 Pin # DOR221
 Route VT105A
 Date 6/28/28

B.M. No. 42 ~ Spike in Elm No. side road opp. Missisquoi Tea Room sign ~ ELEV. 137.99
 B.M. No. 43 ~ Spike in 10' Ash No. side road at edge river ~ ELEV. 141.83
 B.M. No. 44 ~ Top stone at cor. wall south side road at overpass ~ ELEV. 143.21

SERIES OF FR. 20A
 SHEET NO. 2



SHEETS TO BE USED FOR BRIDGE AT STA 254+57

Series	S.I.B.20	No. 60' Span-Square - Solid Rail
"	S.B. No. 2	Typical Details
"	S.B. No. 4	Solid Rail
"	S.A.G. No. 10	Height Square with piles
"	S.B. No. 6	Special Details

SUMMARY OF QUANTITIES FOR BRIDGE AT STA 254+57

ITEM NO	DESCRIPTION	QUANTITY
15	STRUCTURE EXCAVATION CU YDS.	100
34A	CONCRETE CLASS A (1-2-4)	53
34B	" " " " (1-2-4)	190
35	REINFORCING STEEL LBS	3300
36A	STRUCTURAL STEEL	33970
36	TIMBER PILING LIN FT	2320

NEW CABLE GUARD RAIL REQUIRED

~ ON LEFT ~	STA 254+90 To STA 259+86	LENGTH 496 LIN. FT.
~ ON RIGHT ~	STA 254+89 To STA 238+49	" 360 "
~ ON RIGHT ~	STA 258+98 To STA 259+85	" 88 "
		TOTAL ON SHEET 944 LIN. FT.

NEW CABLE GUARD RAIL REQUIRED FR 20 B

~ ON LEFT ~	STA 261+92 To STA 262+14	LENGTH 24 LIN. FT.
~ ON RIGHT ~	STA 261+92 To STA 262+10	" 48 "
		TOTAL 72 LIN. FT.

GRAVEL SURFACE COURSE REQUIRED FR 20 B
 STA 261+92 To STA 262+10 ~ 23 CU YDS.
 CORRECT EXCAVATION INCLUDING DRAINAGE ~ 1800 CU YDS.

B.M. No. 45 - Spike in root 9" Birch now right of way 75' left of R.R. ~ ELEV. 138.53
 B.M. No. 46 - Spike in root 16" Elm at Lucas Brook ~ ELEV. 138.29
 B.M. No. 47 - Spike in base 24" Elm opposite water tower ~ ELEV. 137.75
 B.M. No. 48 - Spike in base 30" Elm South bank river below Int. Bridge ~ ELEV. 139.67
 B.M. No. 49 - Point of ledge at No. side of river below Int. Bridge ~ ELEV. 139.05
 B.M. No. 50 - Point of ledge at edge T.W. North of Int. Bridge ~ ELEV. 139.15