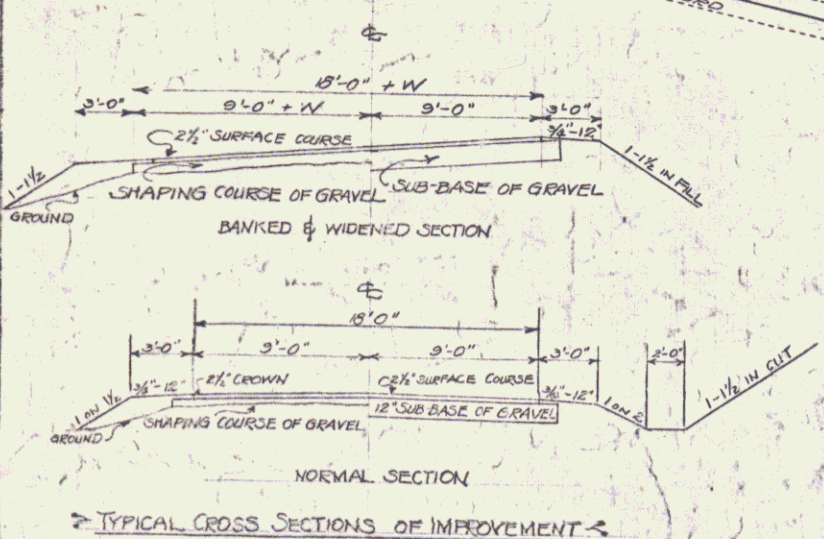
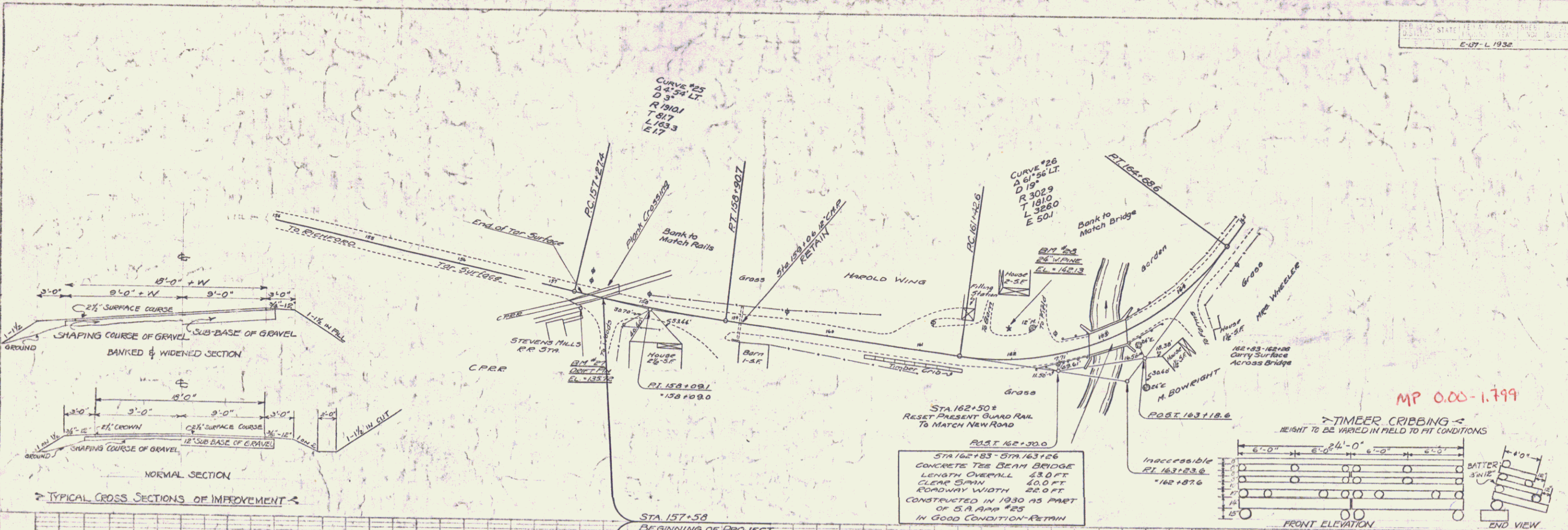


105A

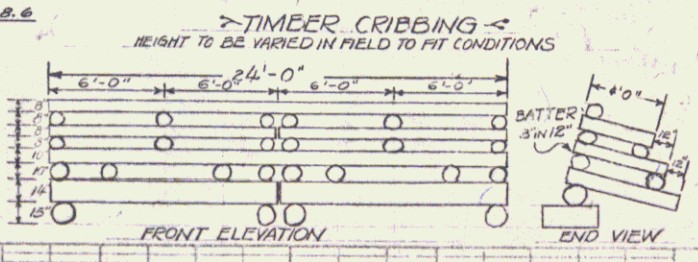
STATE OF VERMONT  
C-17 - L 1932

PLAN  
DATE  
BY  
CHECKED  
DATE  
BY

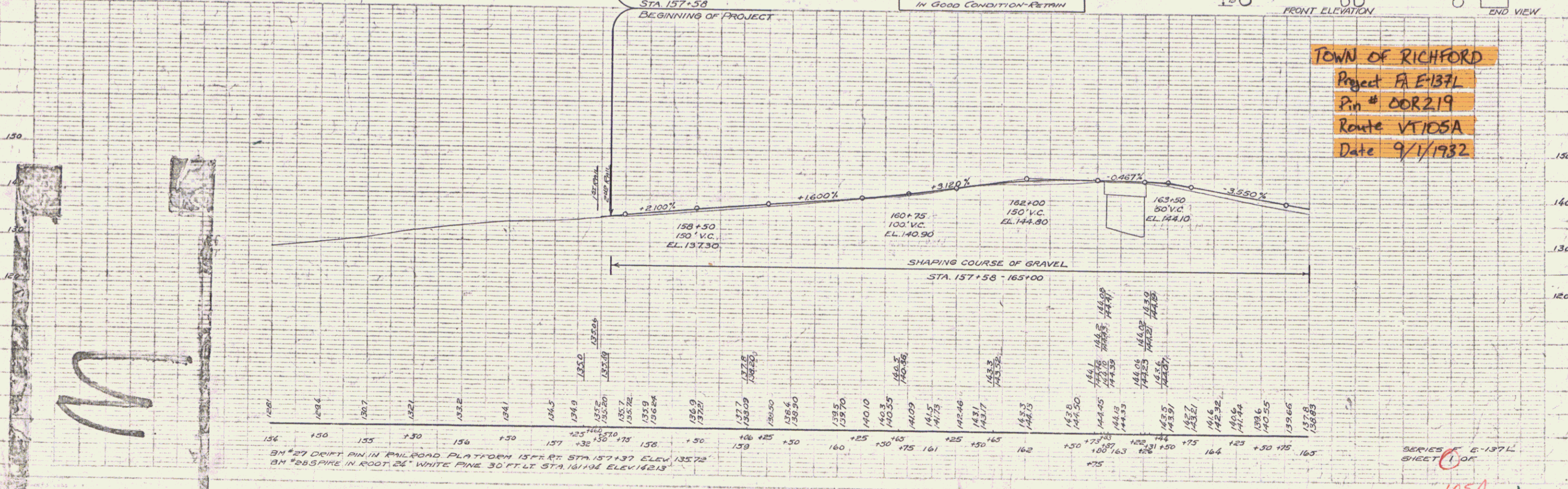
PLAN  
DATE  
BY  
CHECKED  
DATE  
BY



STA 162+83 - STA 163+26  
CONCRETE TEE BEAM BRIDGE  
LENGTH OVERALL 43.0 FT  
CLEAR SPAN 40.0 FT  
ROADWAY WIDTH 22.0 FT  
CONSTRUCTED IN 1930 AS PART  
OF S.A. ROAD #25  
IN GOOD CONDITION - RETAIN



TOWN OF RICHFORD  
Project FA E-137L  
Pin # 00R219  
Route VT105A  
Date 9/1/1982



M

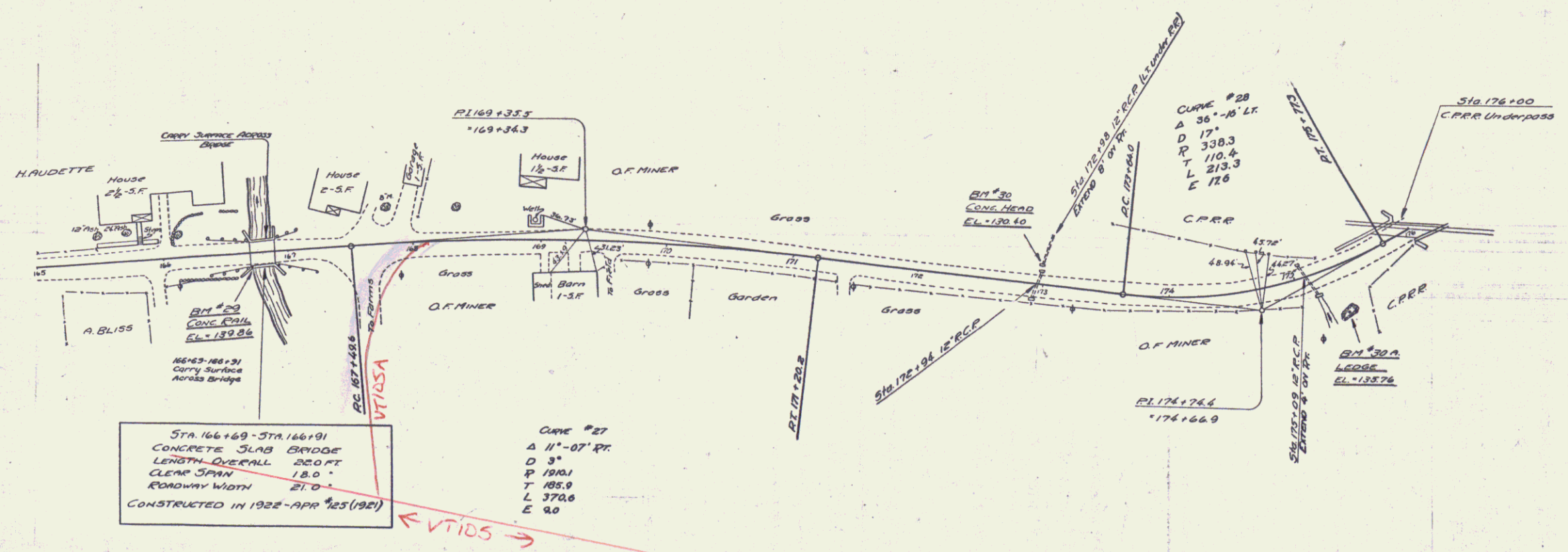
BM #27 DRIFT PIN IN RAILROAD PLATFORM 157+83 STA 157+37 ELEV 135.72  
BM #88 SPIRE IN ROOT 24' WHITE PINE 30' FT LT STA 161+04 ELEV 142.13

SERIES E-137L  
SHEET 1 OF 1

105A

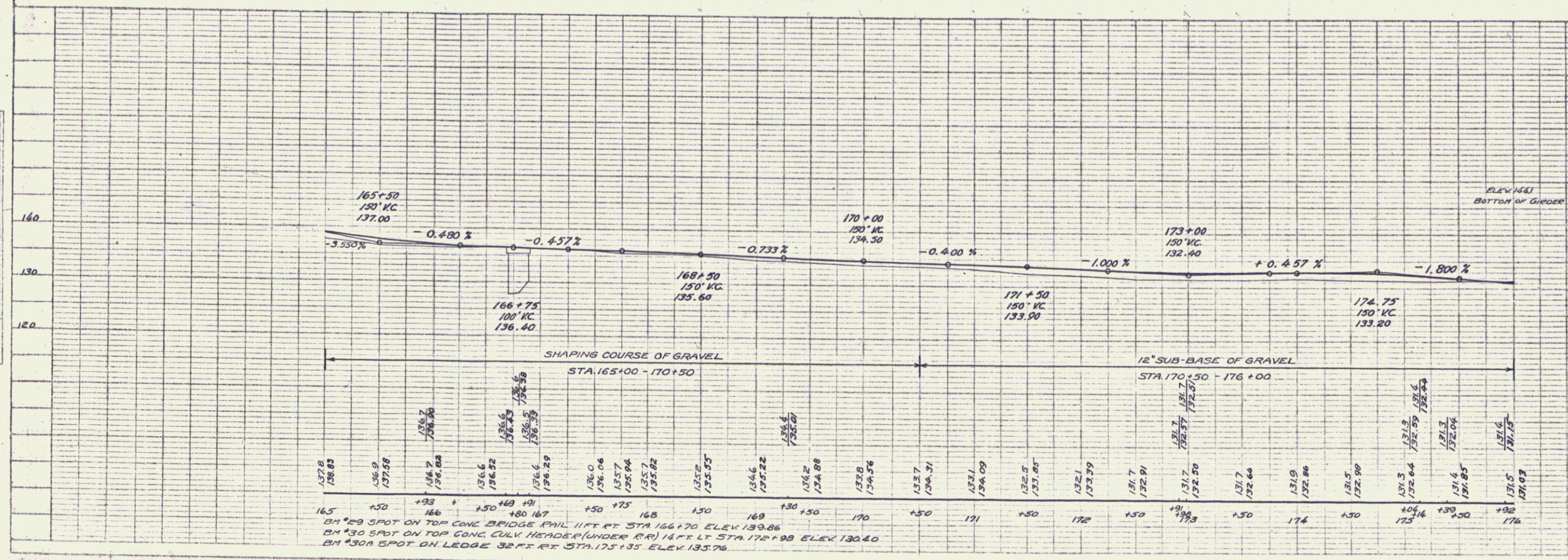
PLAN  
 PROPERTY  
 PLANNING  
 ENGINEERING  
 CONSULTANTS  
 1415 MARKET STREET  
 SAN FRANCISCO, CALIF.  
 DATE: 1932

PROFILE  
 PROPERTY  
 PLANNING  
 ENGINEERING  
 CONSULTANTS  
 1415 MARKET STREET  
 SAN FRANCISCO, CALIF.  
 DATE: 1932



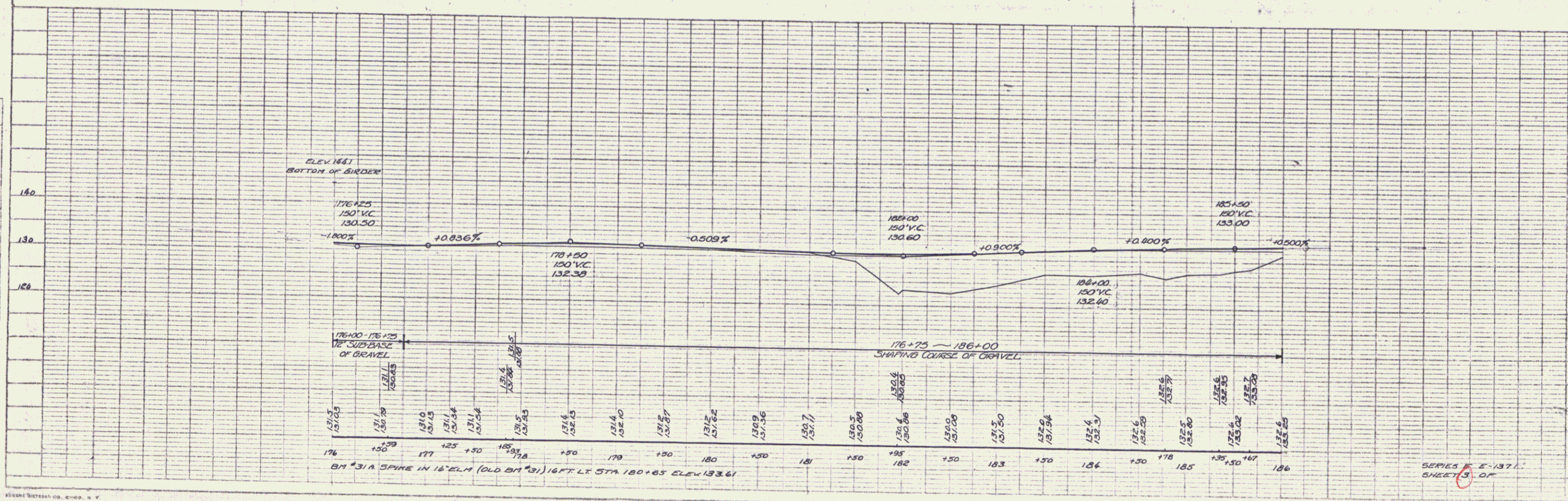
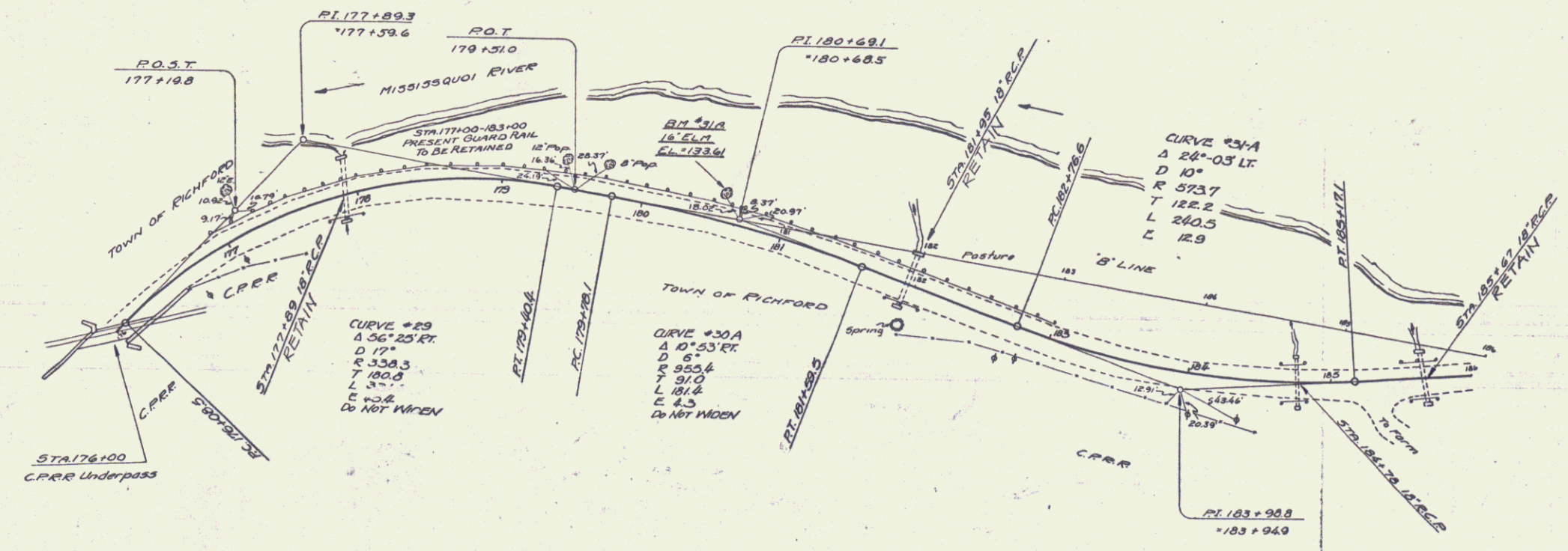
STA 166+69 - STA 166+91  
 CONCRETE SLAB BRIDGE  
 LENGTH OVERALL 22.0 FT  
 CLEAR SPAN 18.0'  
 ROADWAY WIDTH 27.0'  
 CONSTRUCTED IN 1922 - APR #25 (1921)

CURVE #27  
 Δ 11'-07' RC  
 D 3'  
 P 190.1  
 T 185.9  
 L 370.6  
 E 9.0



PLAN  
 DATE: 1932  
 DRAWN BY: [Name]  
 CHECKED BY: [Name]  
 TITLE: [Title]

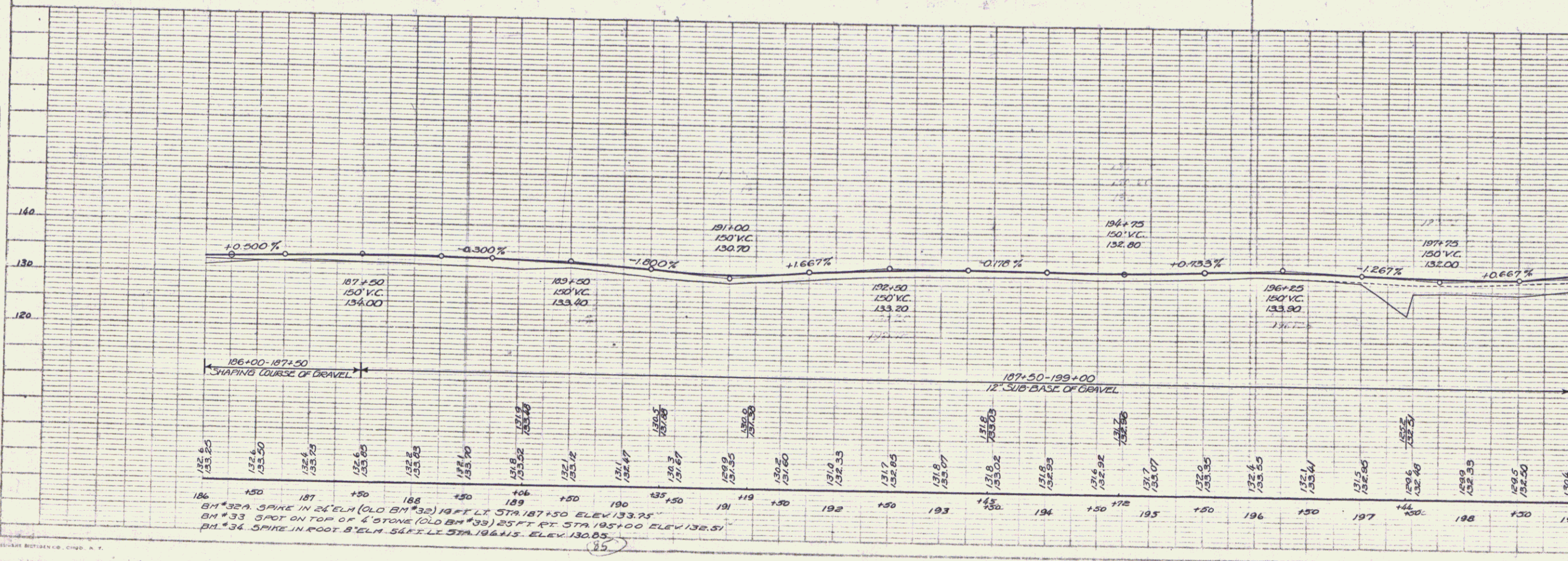
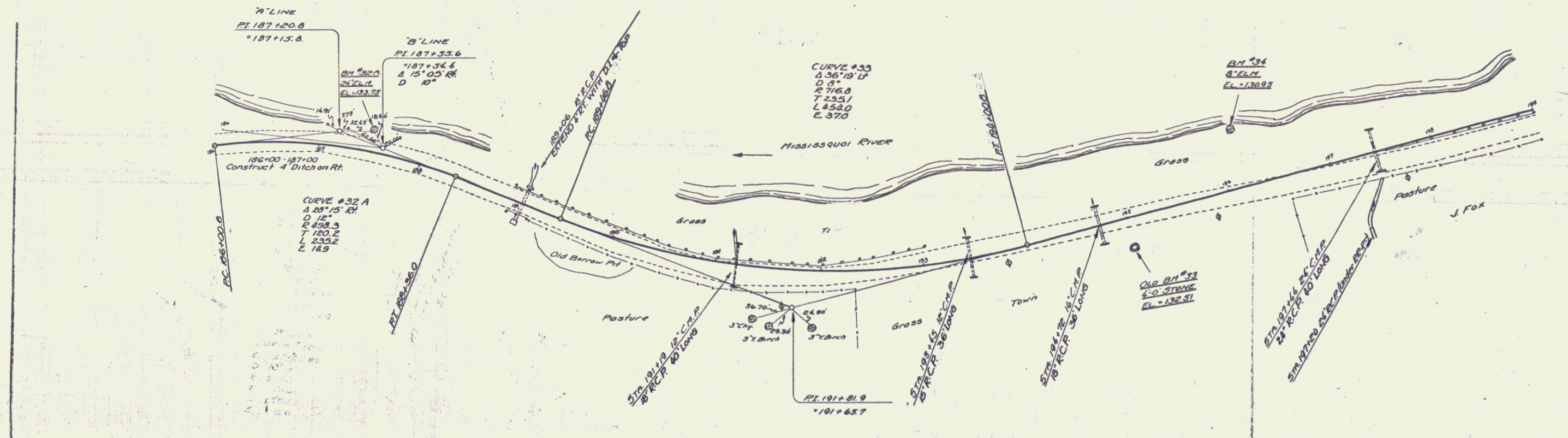
PROFILE  
 DATE: 1932  
 DRAWN BY: [Name]  
 CHECKED BY: [Name]  
 TITLE: [Title]





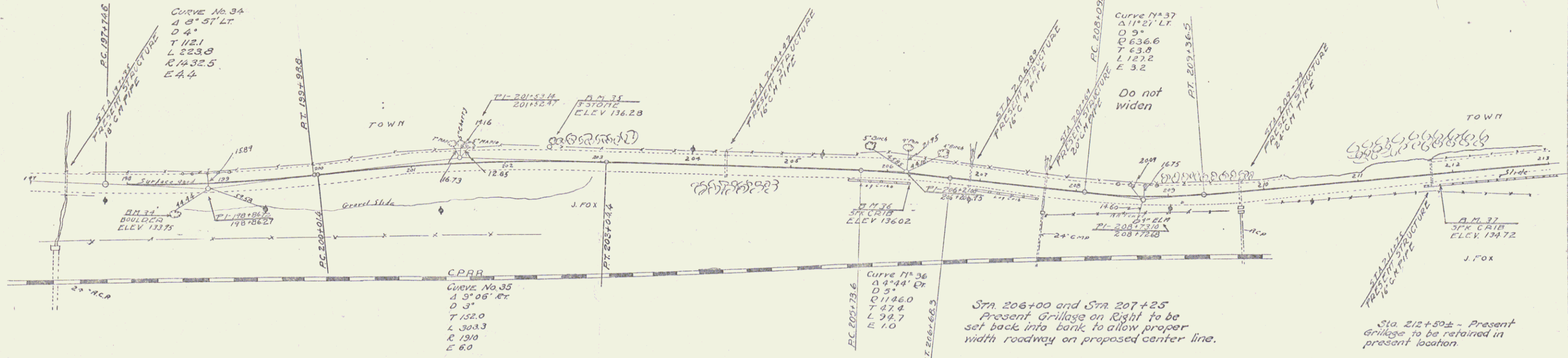
PLAN  
 DRAWING: [unclear]  
 NOTE BOOK: [unclear]  
 CHECKED BY: [unclear]

PROFILE  
 DRAWING: [unclear]  
 NOTE BOOK: [unclear]  
 CHECKED BY: [unclear]



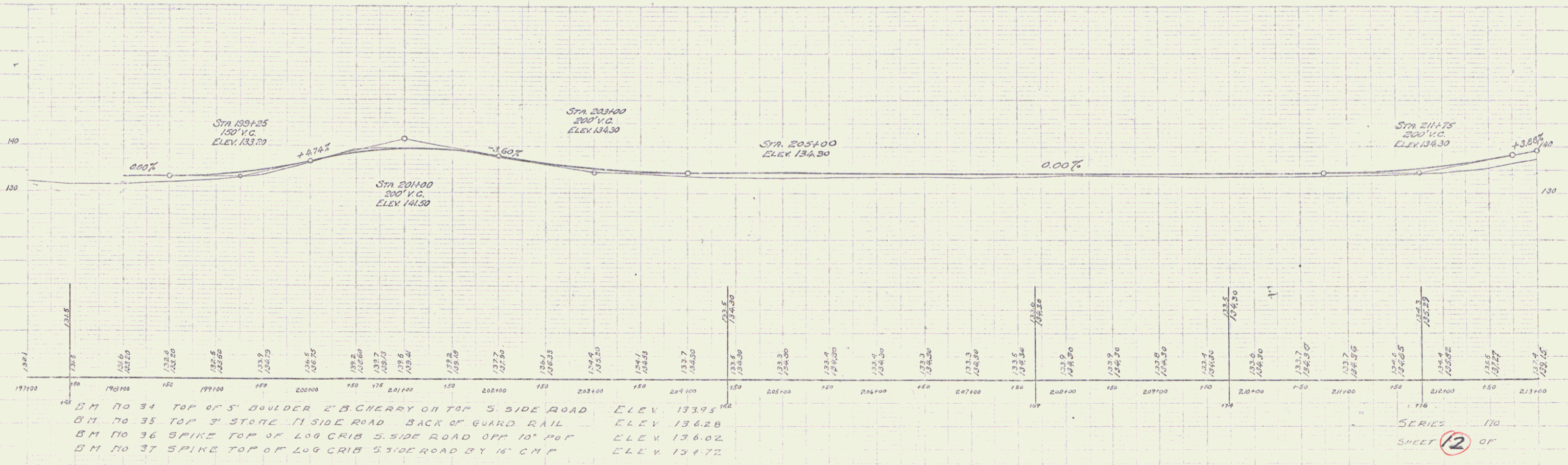


CABLE GUARD RAIL REQUIRED  
 Station Left of Right Length  
 208+25-210+00 Left 475 ft.

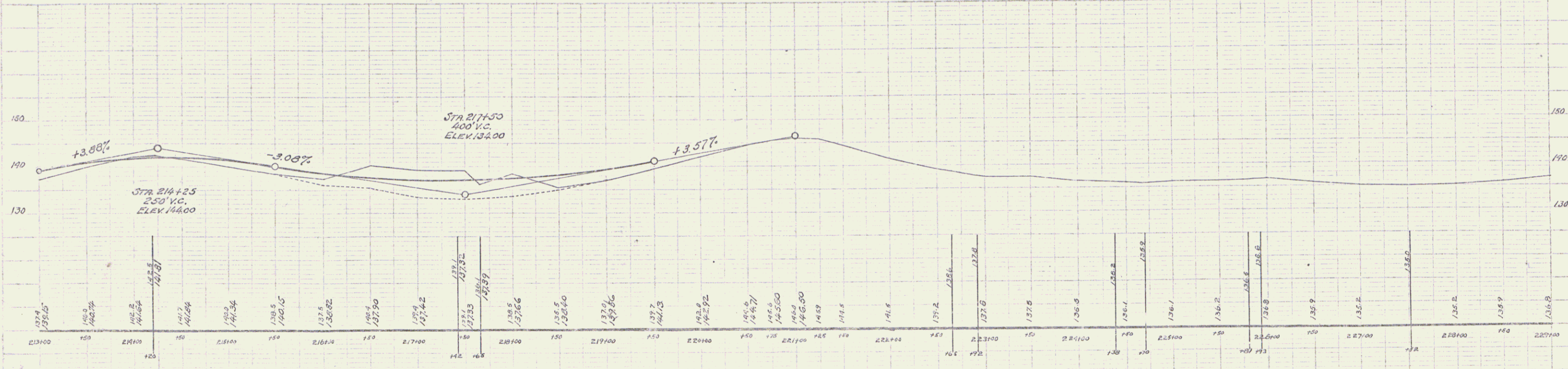
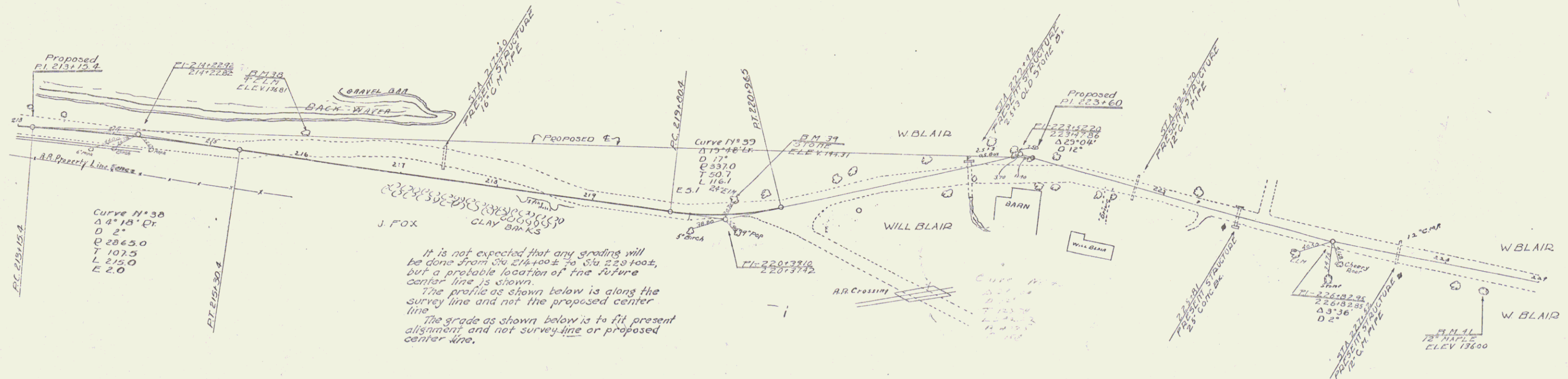


Sta. 206+00 and Sta. 207+25  
 Present Grillage on Right to be set back into bank to allow proper width roadway on proposed center line.

Sta. 212+50± - Present Grillage to be retained in present location.



CABLE GUANO RAIL REQUIRED  
 Station 213+00-217+85 Right Length 4857'

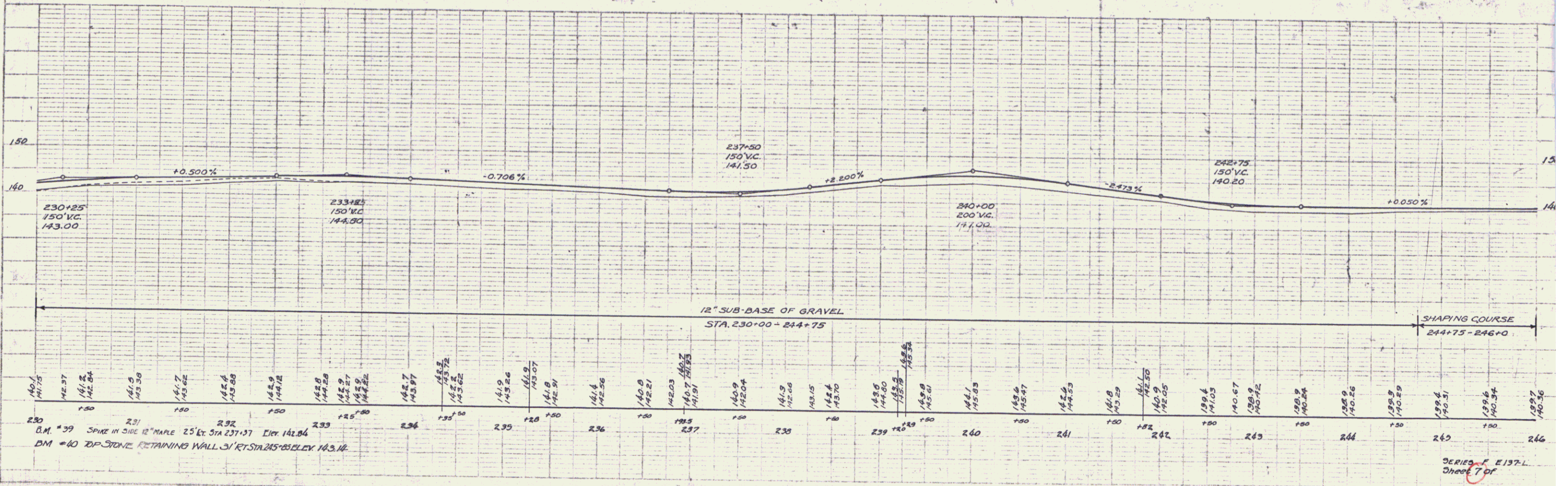
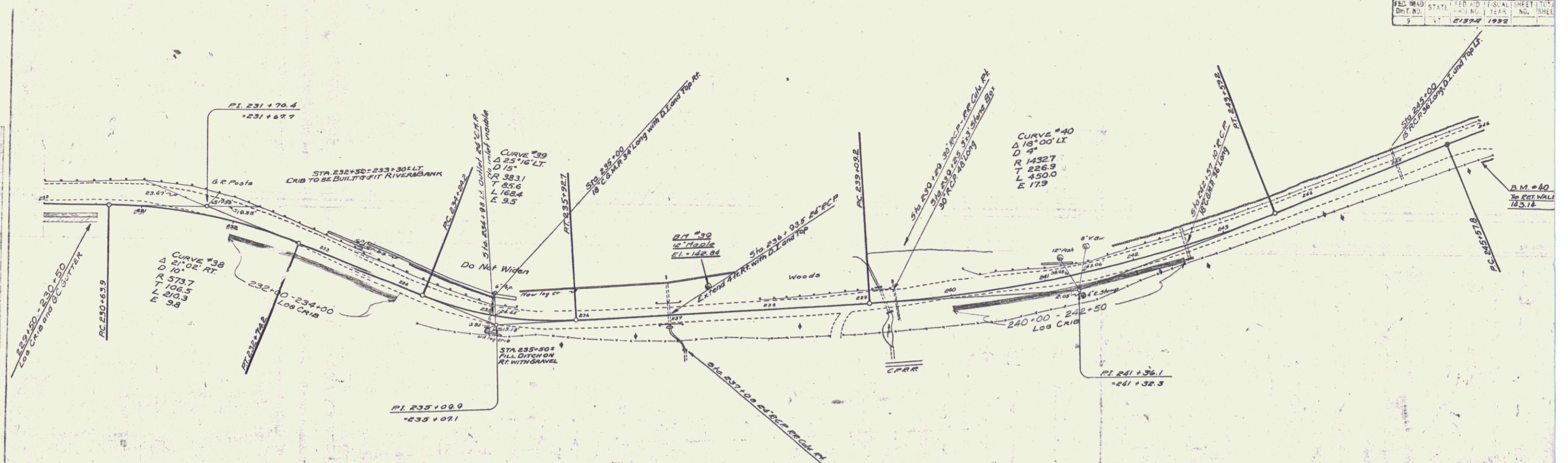


- BM NO 38 SPIKE IN 9" ELM N SIDE ROAD OPPOSITE A BROWN HOUSE ELEV 134.81
- BM NO 39 TOP STONE AT BASE 24" ELM N SIDE ROAD ELEV 144.31
- BM NO 40 TOP 2" ROCK S SIDE ROAD FRONT YELLOW HOUSE ELEV 138.36
- BM NO 41 SPIKE IN BASE BACKSIDE 12" MAPLE S SIDE ROAD WEND ROW MAPLES ELEV 136.00

SERIES NO  
 SHEET 13 OF

PLAN  
 DATE  
 DRAWN BY  
 CHECKED BY  
 APPROVED BY

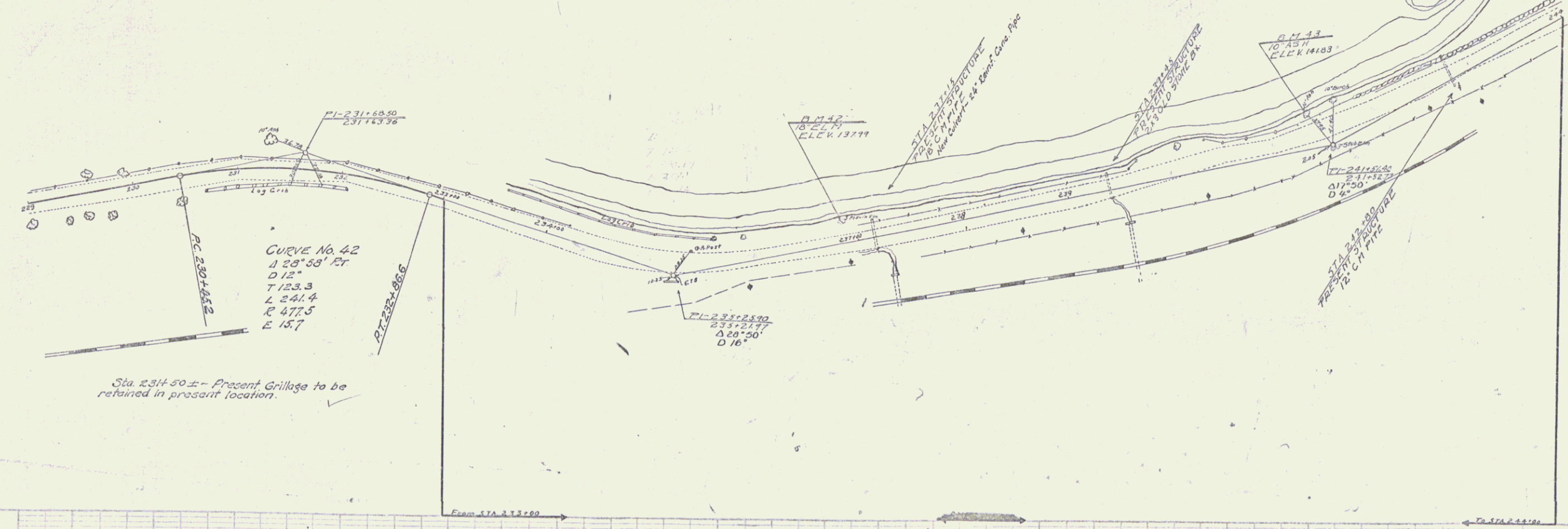
PROFILE  
 DATE  
 DRAWN BY  
 CHECKED BY  
 APPROVED BY



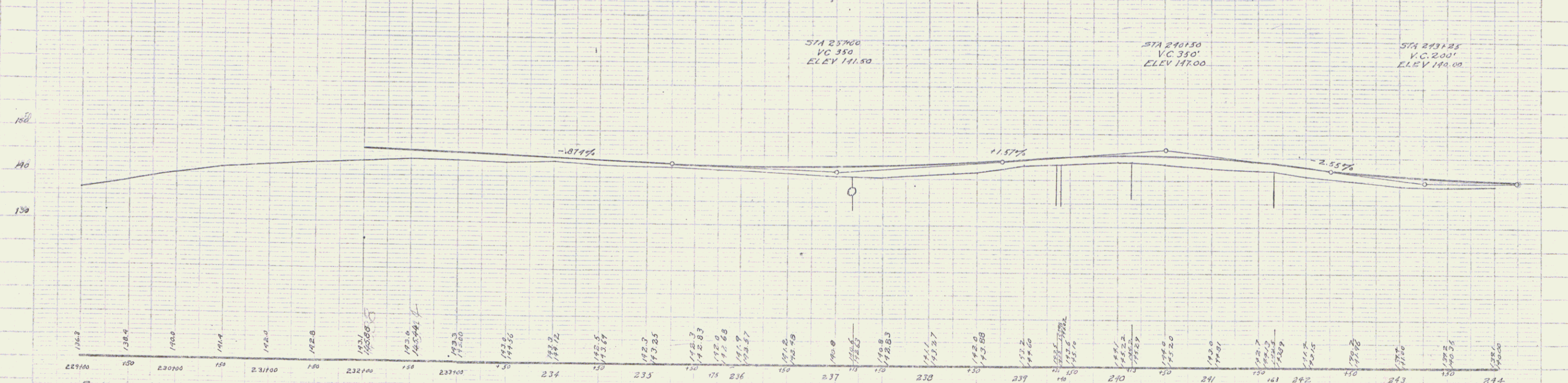
Sta.	Elev.	Sta.	Elev.	Sta.	Elev.	Sta.	Elev.	Sta.	Elev.	Sta.	Elev.	Sta.	Elev.	Sta.	Elev.	Sta.	Elev.	Sta.	Elev.														
230	142.37	231	141.2	232	142.6	233	142.7	234	142.8	235	141.9	236	141.4	237	140.9	238	140.8	239	140.8	240	141.1	241	140.9	242	140.9	243	139.6	244	139.9	245	139.4	246	139.7

B.M. #39 SPIKE IN SIDE OF MARL 25' EX. STA 231+57 Elev 142.84  
 D.M. #40 DP-STONE RETAINING WALL ON RT. STA 245+05 Elev 143.14

WOOD GUARD RAIL REQUIRED		CABLE GUARD RAIL REQ.		NEW REINF. CONC. PIPE CULVERTS REQUIRED		
Station	Length	Station	Length	Station	Diam	Length
237+15	24 ft	240+24	376 ft	237+15	24"	44 ft
Right		Left				1.3 cy
						27"

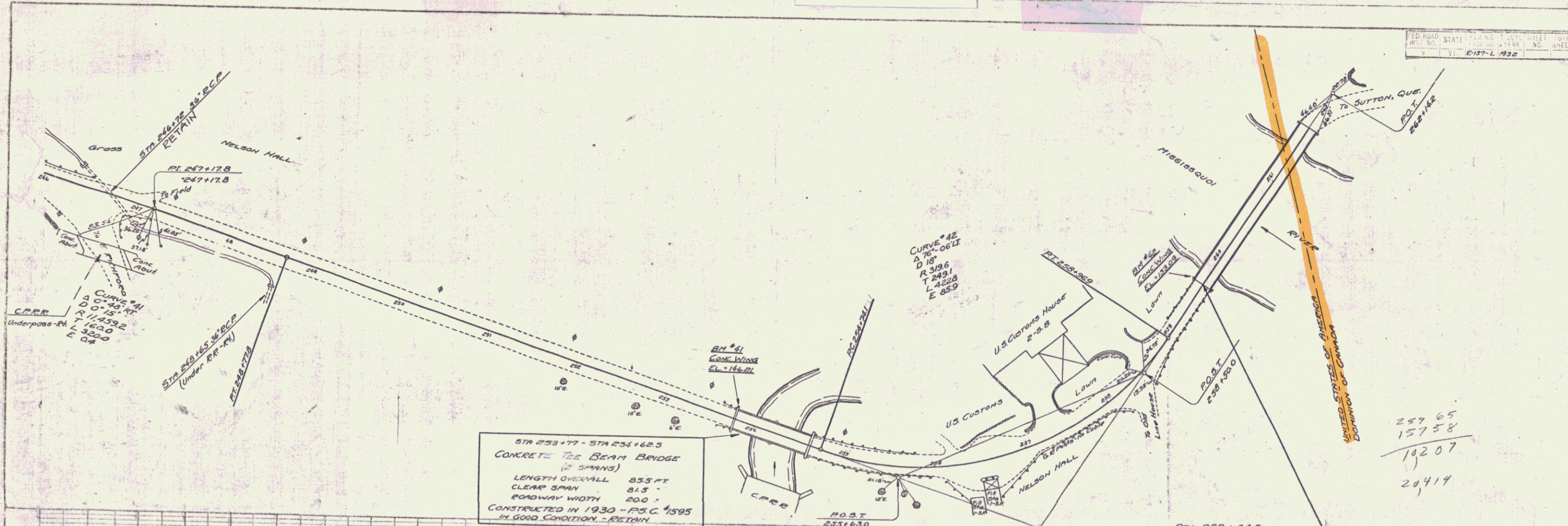


Sta. 237+50 ± - Present Grillage to be retained in present location.

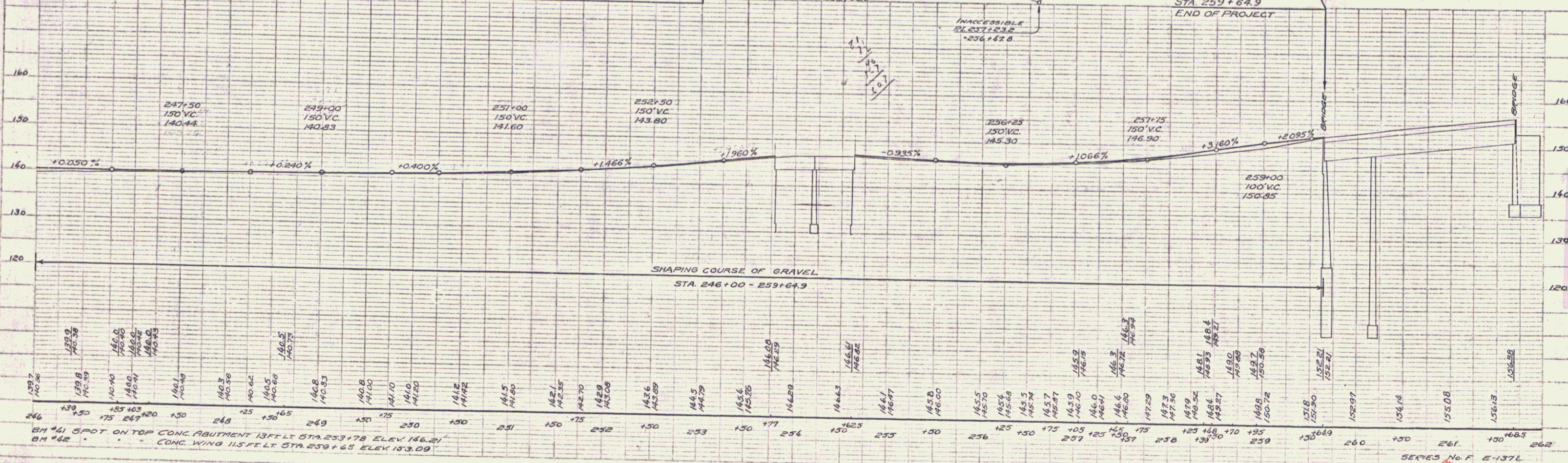


B.M. No 12 SPIKE IN 18' ELM N SIDE ROAD OPPOSITE MISSISSQUOI TEA ROOM SIGN ELEV 137.99  
 B.M. No 13 SPIKE IN SIDE 10' ASH N SIDE ROAD BY 24' B BIRCH AT RIVER EDGE ELEV 141.83

SHEET 14 OF 10



STA 253+77 - STA 254+62.5  
**CONCRETE TEE BEAM BRIDGE**  
 (2 SPANS)  
 LENGTH OVERALL 853 FT  
 CLEAR SPAN 813 -  
 ROADWAY WIDTH 200 -  
 CONSTRUCTED IN 1930 - P.S.C. #1595  
 IN GOOD CONDITION - RETAIN



PLAN  
 DATE 1932  
 DRAWN BY  
 CHECKED BY

PROFILE  
 DATE 1932  
 DRAWN BY  
 CHECKED BY

257.65  
 157.58  
 142.07  
 204.19