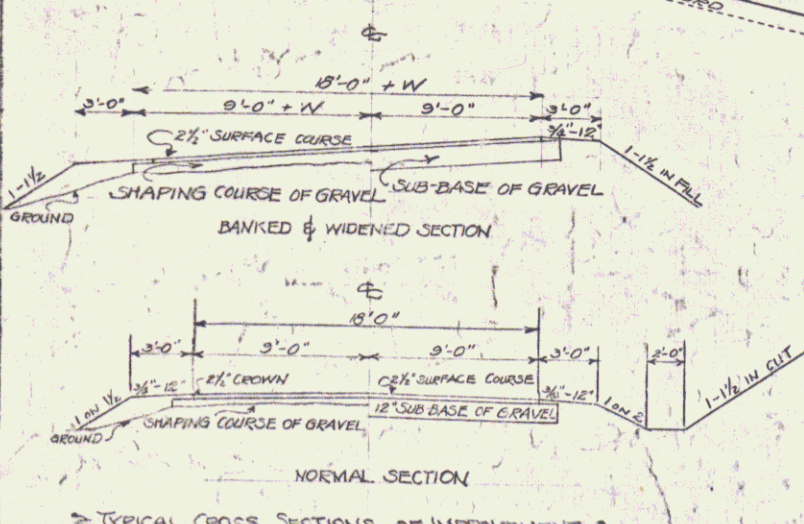
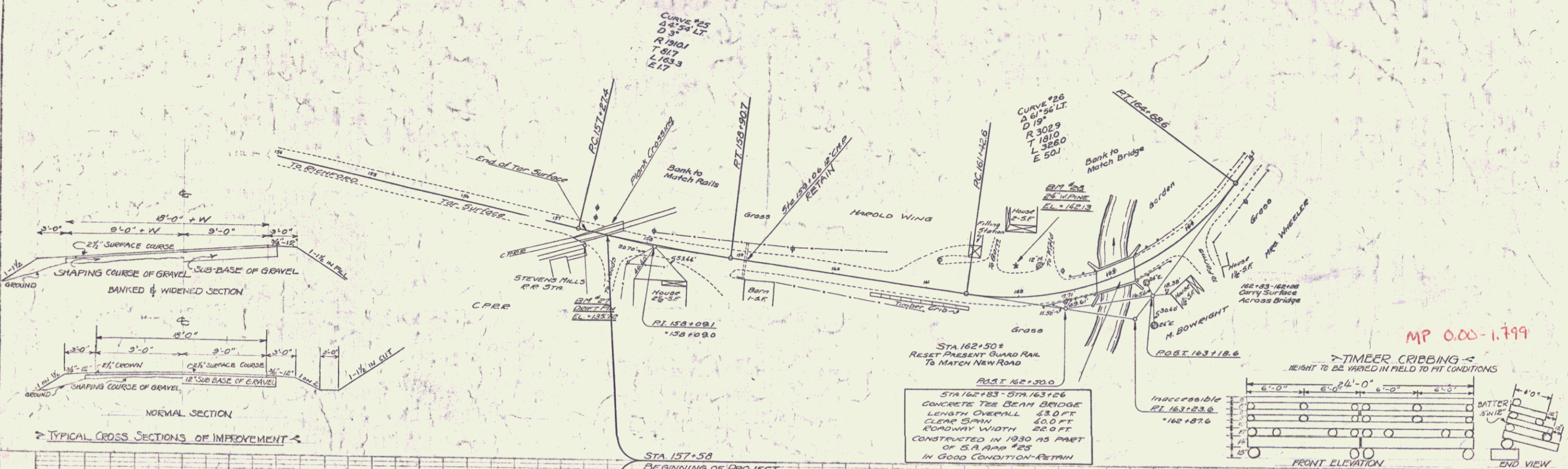


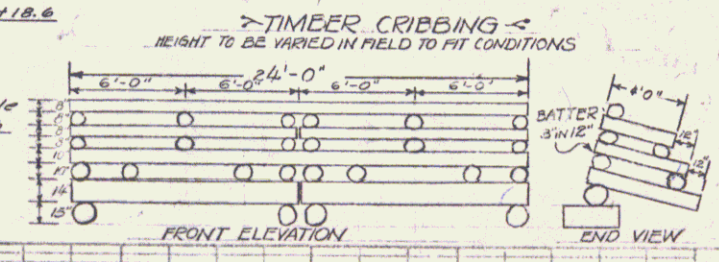
105A

STATE OF VERMONT
E-137-L 1932

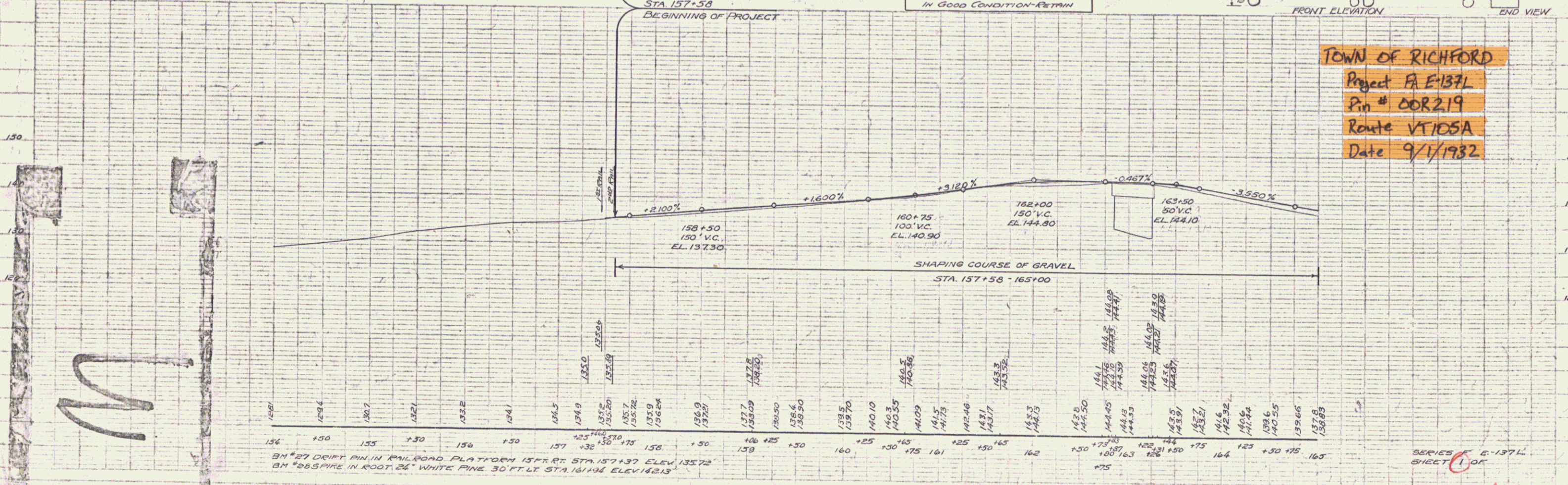
PLAN
DATE
BY
CHECKED
APPROVED



STA 162+83 - STA 163+26
CONCRETE T&E BEAM BRIDGE
LENGTH OVERALL 43.0 FT
CLEAR SPAN 40.0 FT
ROADWAY WIDTH 22.0 FT
CONSTRUCTED IN 1930 AS PART
OF S.A. ROAD #25
IN GOOD CONDITION - RETAIN



TOWN OF RICHFORD
Project FA E-137L
Pin # 00R219
Route VT105A
Date 9/1/1932



M

PLAN
DATE
BY
CHECKED
APPROVED

BM #27 DRIFT PIN IN RAILROAD PLATFORM 157+83 STA. 157+37 ELEV. 135.72
BM #88 SPIRE IN ROOT 24' WHITE PINE 30' FT. LT. STA. 161+04 ELEV. 142.13

SERIES E-137L
SHEET 1 OF 1

105A