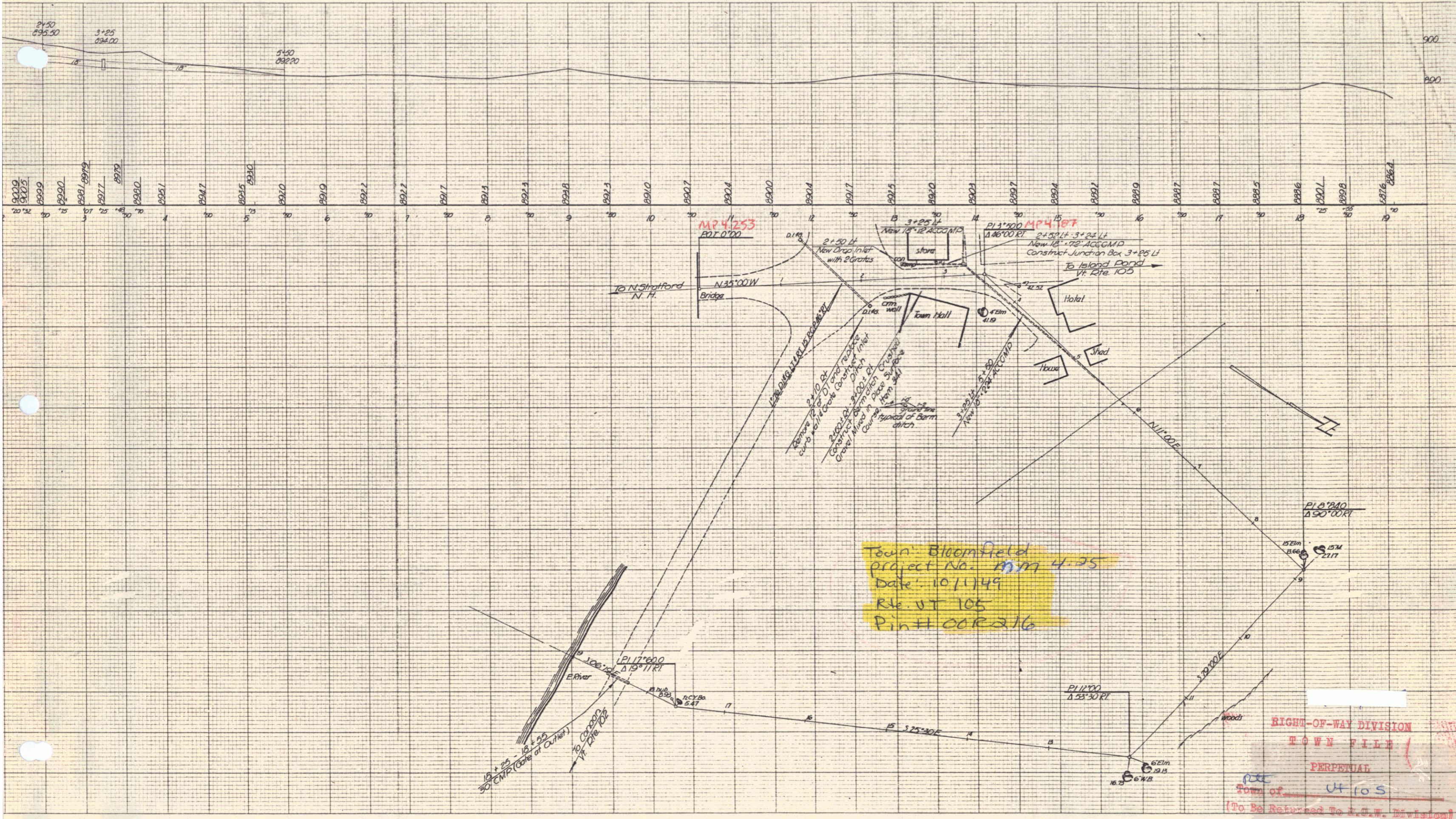


KEPPLER & KERR CO. ENGINEERS
100 N. MAIN ST. SUITE 100
BLOOMFIELD, VT 05116
PHONE: 802-898-1111
FAX: 802-898-1112



MP 4.253
PVI 0+00

MP 4.187
PVI 3+00

Town: Bloomfield
Project No. MM 4-25
Date: 10/1/49
R/L: VT 105
Pin# 00R216

RIGHT-OF-WAY DIVISION
TOWN FILE
PERPETUAL
Town of VT 105
(To Be Returned To R.O.W. Division)

SHEET 1

