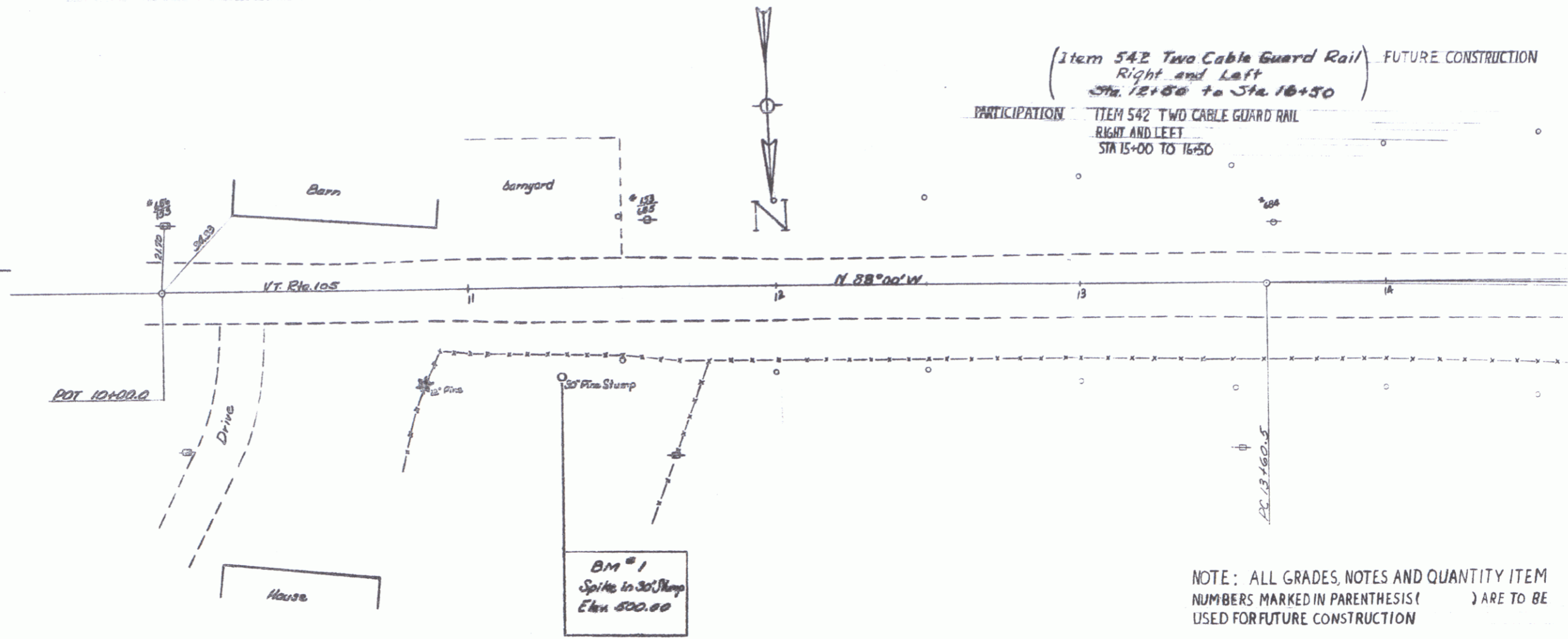


2.3 Miles from Sta. 11+00 to Enosburg-Berkshire Town Line.



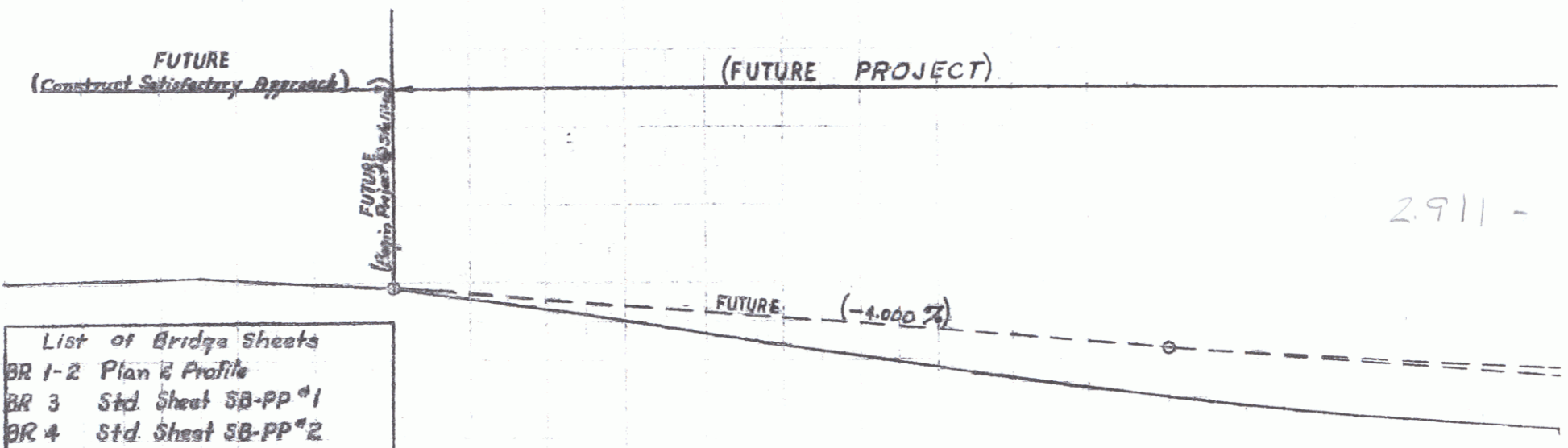
(Item 542 Two Cable Guard Rail) FUTURE CONSTRUCTION
 Right and Left
 Sta. 15+50 to Sta. 16+50
 PARTICIPATION: ITEM 542 TWO CABLE GUARD RAIL
 RIGHT AND LEFT
 STA 15+00 TO 16+50

NOTE: ALL GRADES, NOTES AND QUANTITY ITEM NUMBERS MARKED IN PARENTHESIS () ARE TO BE USED FOR FUTURE CONSTRUCTION

PROJECT	Enosburg
STATION	ST-34-1-M
DATE	11/1/63
BY	ACCOMP - 11/1/63
NO.	3931

490
480

RECOMMENDED FOR APPROVAL
 DISTRICT ENGINEER DATE
 RECOMMENDED FOR APPROVAL
 DISTRICT ENGINEER DATE
 RECOMMENDED FOR APPROVAL
 DISTRICT ENGINEER DATE
 APPROVED BY
 CHIEF ENGINEER DATE



- List of Bridge Sheets
- BR 1-2 Plan & Profile
 - BR 3 Std. Sheet SB-PP #1
 - BR 4 Std. Sheet SB-PP #2
 - BR 5-6 Roadway Cross Sections
 - BR 7-8 Channel Cross Sections
 - BR 9 Typical Roadway Sections
 - BR 10 Standard Drawing E1, Barricades, Signs and Lights.

ENOSBURG
 Project: ST34-1-M
 Sta. 15+99
 Scale: Hor. 1" = 20'-0"
 Vert. 1" = 10'-0"
 Prepared by: E.H.E.
 Checked by: J.T.T.
 MP 2.911-2.740

Rte: VT 105
 Date: 1/1/1963
 Pin #: 00R214

SHEET 1