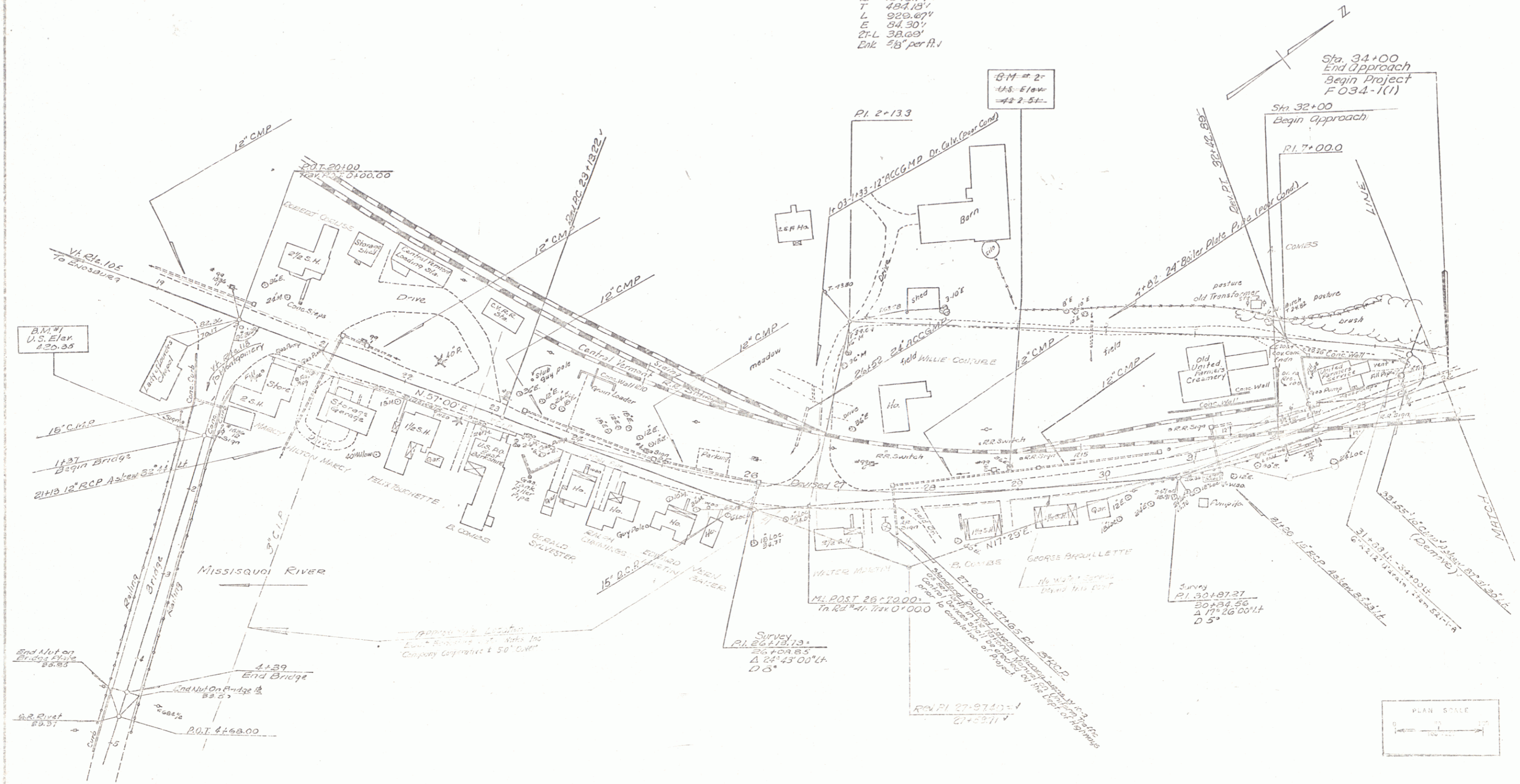


PLAN	DATE	BY
REVISED		
NO. 1		
NO. 2		
NO. 3		
NO. 4		
NO. 5		
NO. 6		
NO. 7		
NO. 8		
NO. 9		
NO. 10		

REV. CURVE DATA
 Δ 39° 31' 00" Lt.
 D 4' 15" /
 R 1348.14' /
 T 484.13' /
 L 929.87' /
 E 84.30' /
 2FL 38.69' /
 Ent. 2.8' per ft. /

CONSTRUCT DRIVE
 32+45 Lt. /
 34+00 Lt. /

THREE CABLE GUARD RAIL
 W/ STEEL POSTS, ITEM 542
 32+00 Rt. - 32+45 Rt.
 31+15.5 - 32+54.7 Rt.



Sta. 34+00
 End Approach
 Begin Project
 F03A-1(1)

Sta. 32+00
 Begin Approach



BEOKSHIRE
 F-EG-03A-1(1)
 Sheet 12 of 132 Sheets

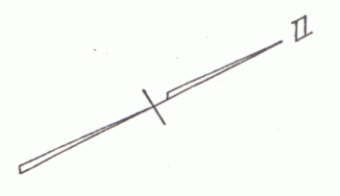
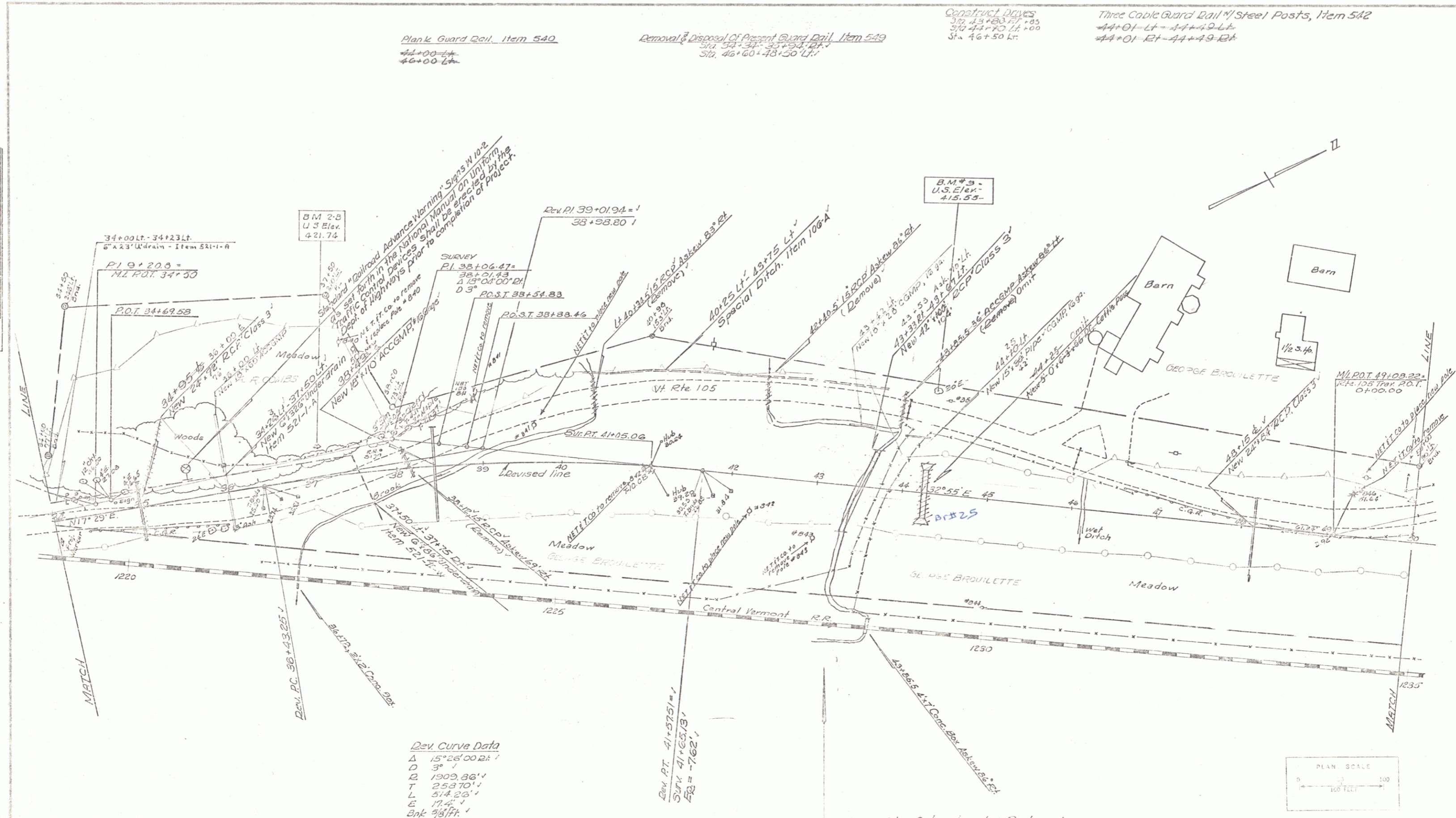
PLAN	DATE	BY
DESIGNED		
CHECKED		
APPROVED		
PROJECT		

Plank Guard Rail, Item 540
 44+00 Lt.
 46+00 Lt.

Removal & Disposal of Present Guard Rail, Item 549
 37+50 Lt. - 38+50 Lt.
 39+60 Lt. - 48+50 Lt.

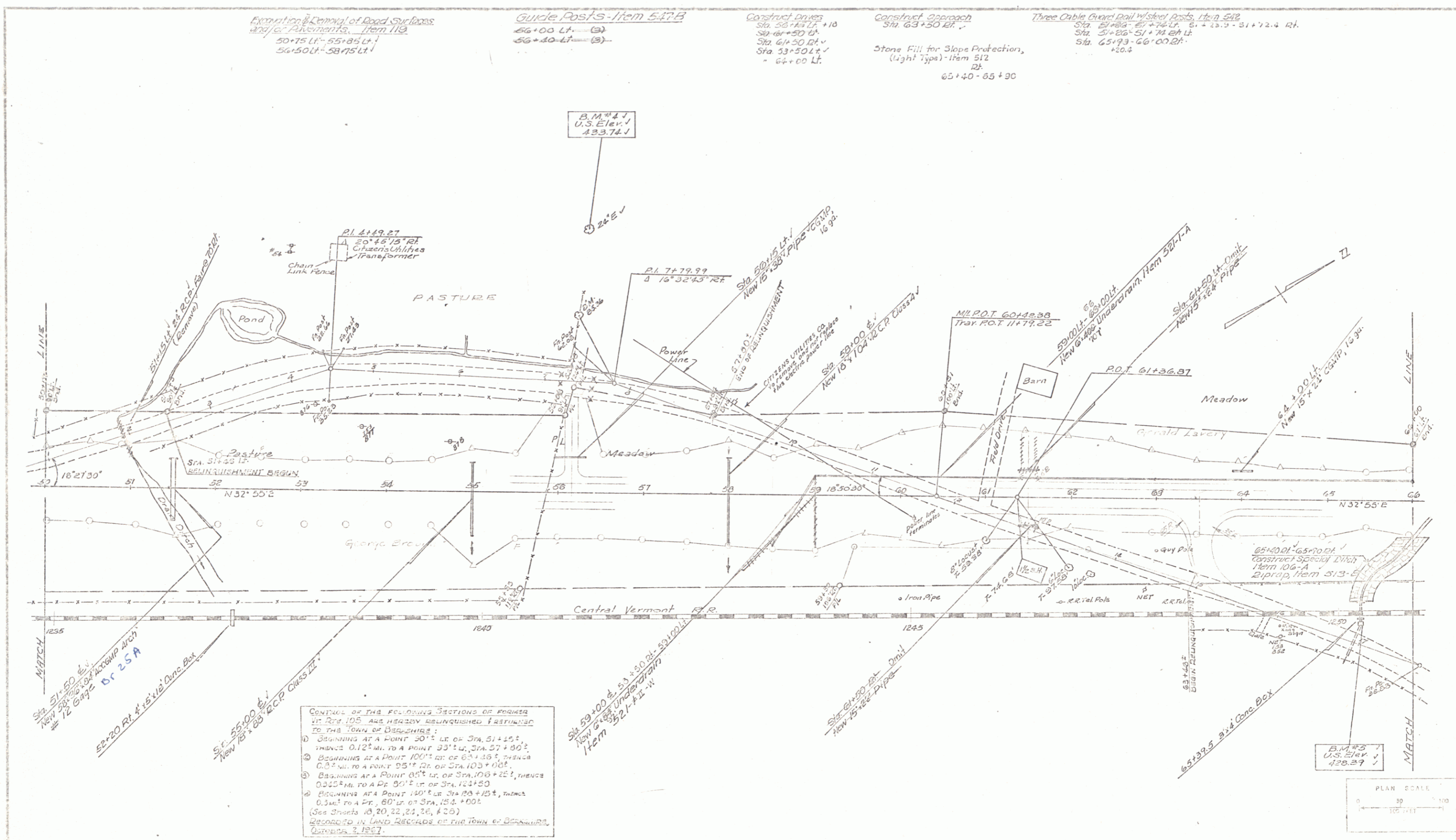
Construct Drives
 37+43+00 Lt. +0.00
 37+44+70 Lt. +0.00
 37+46+50 Lt.

Three Cable Guard Rail w/ Steel Posts, Item 542
 44+01 Lt. - 44+49 Lt.
 44+01 Lt. - 44+49 Lt.



BERKSHIRE
 F-19-03-1(1)
 Sheet 14 of 18 sheets

PLAN	DATE	BY
REVISIONS		
NO. 1	10/15/22	J.M.
NO. 2	11/15/22	J.M.
NO. 3	12/15/22	J.M.
NO. 4	1/15/23	J.M.
NO. 5	2/15/23	J.M.
NO. 6	3/15/23	J.M.
NO. 7	4/15/23	J.M.
NO. 8	5/15/23	J.M.
NO. 9	6/15/23	J.M.
NO. 10	7/15/23	J.M.
NO. 11	8/15/23	J.M.
NO. 12	9/15/23	J.M.
NO. 13	10/15/23	J.M.
NO. 14	11/15/23	J.M.
NO. 15	12/15/23	J.M.
NO. 16	1/15/24	J.M.
NO. 17	2/15/24	J.M.
NO. 18	3/15/24	J.M.
NO. 19	4/15/24	J.M.
NO. 20	5/15/24	J.M.
NO. 21	6/15/24	J.M.
NO. 22	7/15/24	J.M.
NO. 23	8/15/24	J.M.
NO. 24	9/15/24	J.M.
NO. 25	10/15/24	J.M.
NO. 26	11/15/24	J.M.
NO. 27	12/15/24	J.M.
NO. 28	1/15/25	J.M.
NO. 29	2/15/25	J.M.
NO. 30	3/15/25	J.M.
NO. 31	4/15/25	J.M.
NO. 32	5/15/25	J.M.
NO. 33	6/15/25	J.M.
NO. 34	7/15/25	J.M.
NO. 35	8/15/25	J.M.
NO. 36	9/15/25	J.M.
NO. 37	10/15/25	J.M.
NO. 38	11/15/25	J.M.
NO. 39	12/15/25	J.M.
NO. 40	1/15/26	J.M.
NO. 41	2/15/26	J.M.
NO. 42	3/15/26	J.M.
NO. 43	4/15/26	J.M.
NO. 44	5/15/26	J.M.
NO. 45	6/15/26	J.M.
NO. 46	7/15/26	J.M.
NO. 47	8/15/26	J.M.
NO. 48	9/15/26	J.M.
NO. 49	10/15/26	J.M.
NO. 50	11/15/26	J.M.
NO. 51	12/15/26	J.M.
NO. 52	1/15/27	J.M.
NO. 53	2/15/27	J.M.
NO. 54	3/15/27	J.M.
NO. 55	4/15/27	J.M.
NO. 56	5/15/27	J.M.
NO. 57	6/15/27	J.M.
NO. 58	7/15/27	J.M.
NO. 59	8/15/27	J.M.
NO. 60	9/15/27	J.M.
NO. 61	10/15/27	J.M.
NO. 62	11/15/27	J.M.
NO. 63	12/15/27	J.M.
NO. 64	1/15/28	J.M.
NO. 65	2/15/28	J.M.
NO. 66	3/15/28	J.M.
NO. 67	4/15/28	J.M.
NO. 68	5/15/28	J.M.
NO. 69	6/15/28	J.M.
NO. 70	7/15/28	J.M.
NO. 71	8/15/28	J.M.
NO. 72	9/15/28	J.M.
NO. 73	10/15/28	J.M.
NO. 74	11/15/28	J.M.
NO. 75	12/15/28	J.M.
NO. 76	1/15/29	J.M.
NO. 77	2/15/29	J.M.
NO. 78	3/15/29	J.M.
NO. 79	4/15/29	J.M.
NO. 80	5/15/29	J.M.
NO. 81	6/15/29	J.M.
NO. 82	7/15/29	J.M.
NO. 83	8/15/29	J.M.
NO. 84	9/15/29	J.M.
NO. 85	10/15/29	J.M.
NO. 86	11/15/29	J.M.
NO. 87	12/15/29	J.M.
NO. 88	1/15/30	J.M.
NO. 89	2/15/30	J.M.
NO. 90	3/15/30	J.M.
NO. 91	4/15/30	J.M.
NO. 92	5/15/30	J.M.
NO. 93	6/15/30	J.M.
NO. 94	7/15/30	J.M.
NO. 95	8/15/30	J.M.
NO. 96	9/15/30	J.M.
NO. 97	10/15/30	J.M.
NO. 98	11/15/30	J.M.
NO. 99	12/15/30	J.M.
NO. 100	1/15/31	J.M.



CONTINUE OF THE FOLLOWING SECTIONS OF HIGHWAY IN THE TOWN OF BEDKSHIRE, VERMONT, ARE HEREBY RELINQUISHED TO THE TOWN OF BEDKSHIRE:

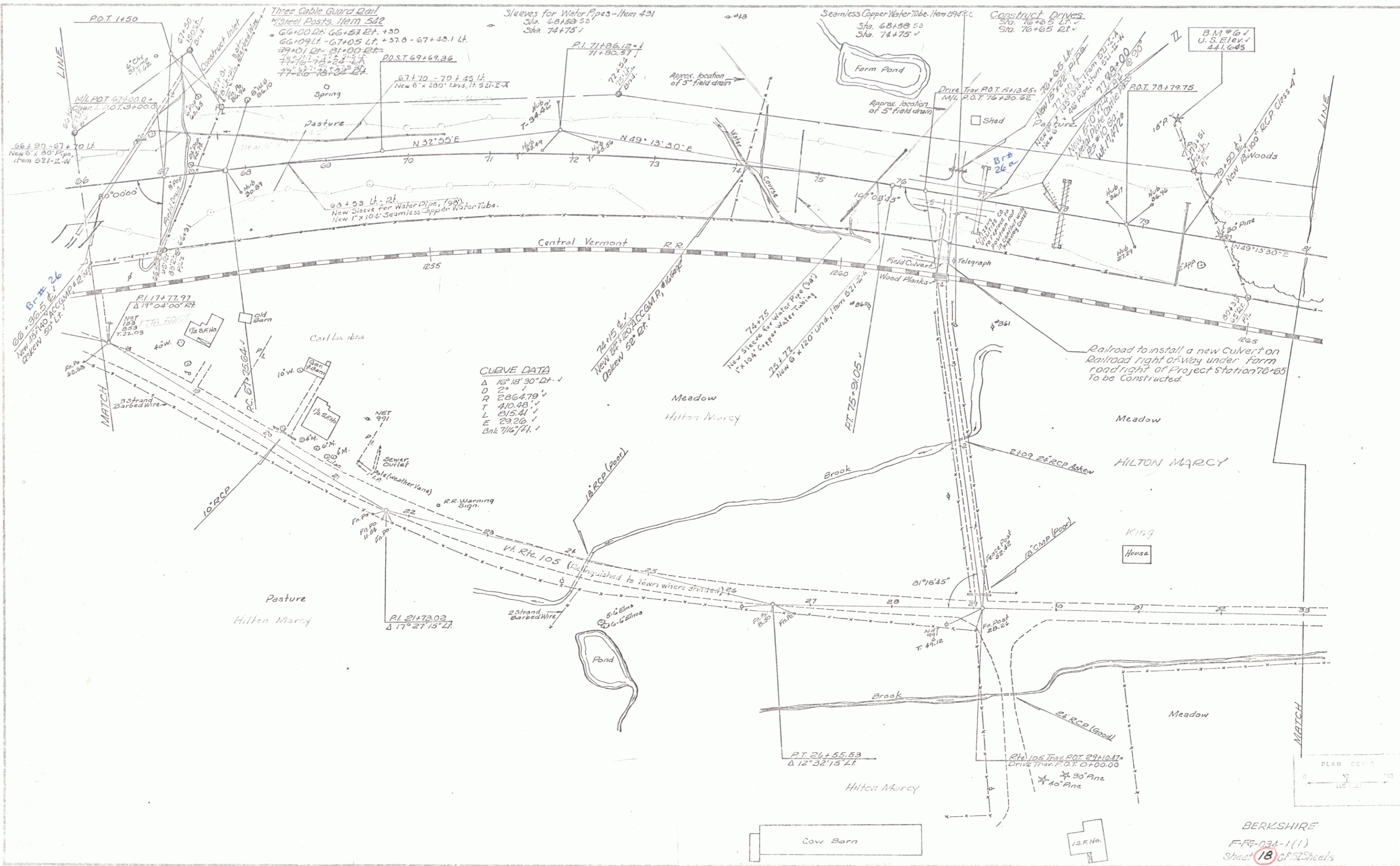
- BEGINNING AT A POINT 50' S. OF STA. 51+10, THENCE 0.12 MI. TO A POINT 33' S. OF STA. 57+00;
- BEGINNING AT A POINT 100' S. OF STA. 57+00, THENCE 0.37 MI. TO A POINT 95' S. OF STA. 103+00;
- BEGINNING AT A POINT 45' S. OF STA. 103+00, THENCE 0.22 MI. TO A POINT 90' S. OF STA. 124+50;
- BEGINNING AT A POINT 150' S. OF STA. 124+50, THENCE 0.3 MI. TO A POINT 80' S. OF STA. 154+00.

(See Sheets 10, 20, 22, 24, 26, & 28)
 RECORDED IN LAND RECORDS OF THE TOWN OF BEDKSHIRE, VERMONT, 3, 1927.



BEDKSHIRE
 F-FG-034-1(1)
 Sheet 16 of 132 Sheets

PLAN	DESIGNED	BY
	CHECKED	DATE
	APPROVED	
	DATE	

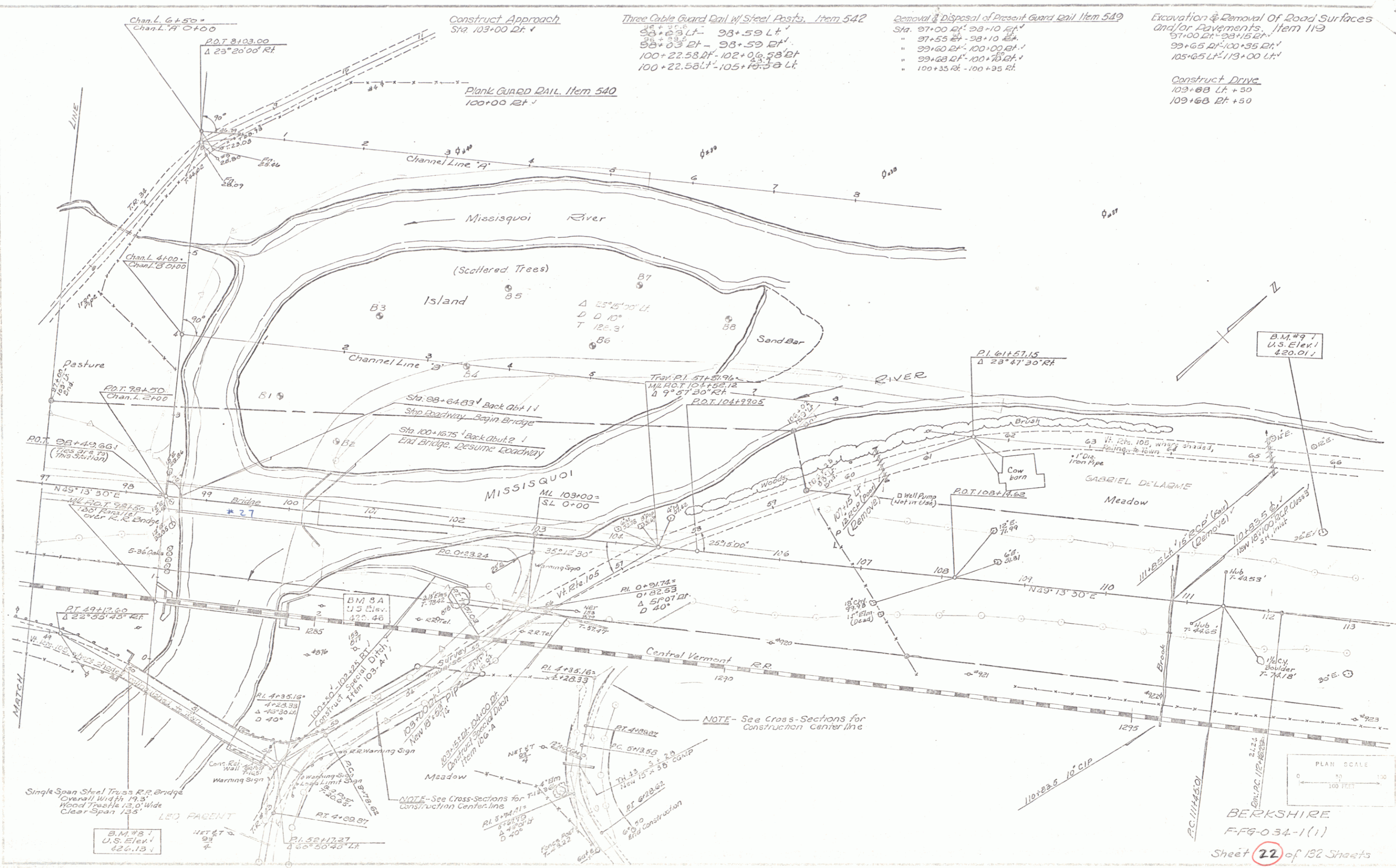


CURVE DATA
 Δ 16° 18' 30" RT
 D 217
 R 286.479
 T 410.48
 L 215.41
 E 29.26
 Bk 116.74



BERKSHIRE
 F-85-034-1(1)
 Sheet 18 of 22 Sheets

PLAN	DATE	BY
REVISION		
APPROVED		
DATE		



Construct Approach
Sta. 103+00 Rt. +

Three Cable Guard Rail w/ Steel Posts, Item 542
98+63 Lt. - 98+59 Lt.
98+03 Rt. - 98+59 Rt.
100+22.58 Rt. - 102+06.58 Rt.
100+22.58 Lt. - 105+19.58 Lt.

Removal & Disposal of Present Guard Rail Item 549
Sta. 97+00 Rt. - 98+10 Rt.
" 97+55 Rt. - 98+10 Rt.
" 99+60 Rt. - 100+00 Rt.
" 99+68 Rt. - 100+78 Rt.
" 100+35 Rt. - 100+35 Rt.

Excavation & Removal of Road Surfaces
and/or Pavements, Item 119
97+00 Rt. - 98+15 Rt.
99+65 Rt. - 100+35 Rt.
105+65 Lt. - 113+00 Lt.

Construct Drive
109+68 Lt. + 50
109+68 Rt. + 50

Single Span Steel Truss R.R. Bridge
Overall Width 19.3'
Wood Truss 13.0' Wide
Clear Span 135'

NOTE - See Cross-Sections for
Construction Centerline

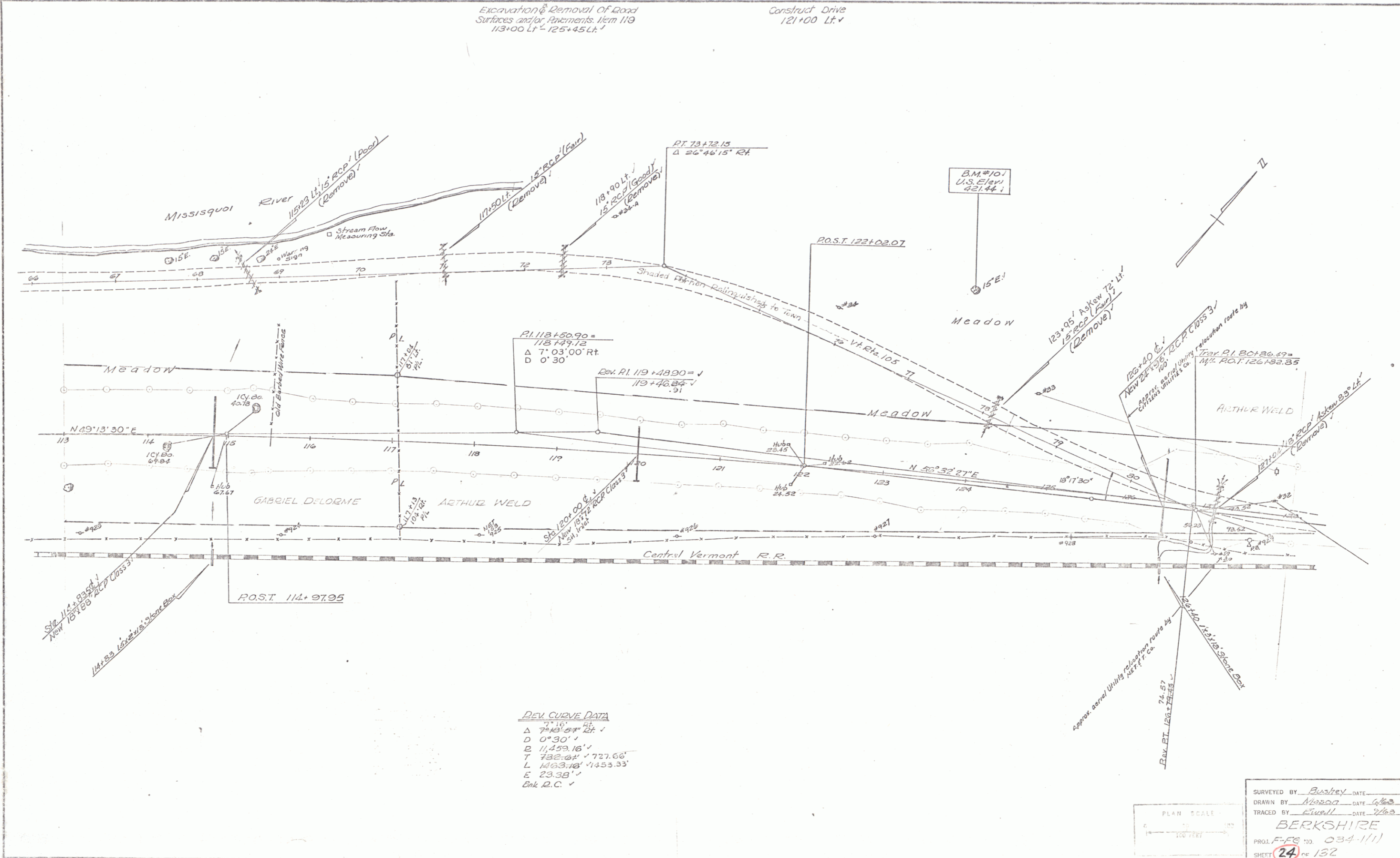
NOTE - See Cross-Sections for
Construction Centerline



BERKSHIRE
FFG-034-1(1)
Sheet 22 of 132 Sheets

Excavation & Removal of Road Surfaces and/or Pavements Item 119
113+00 Lt. - 125+45 Lt.

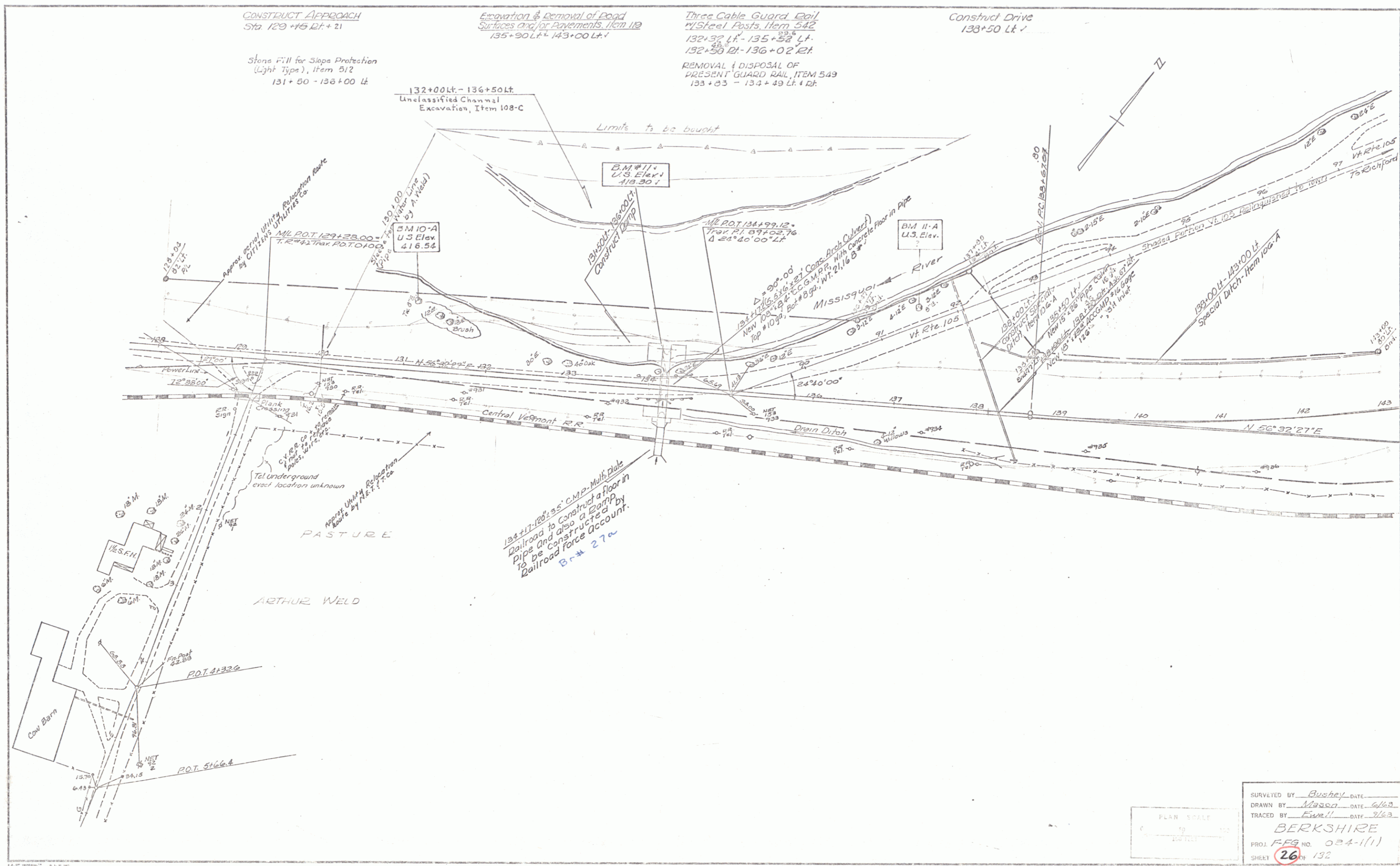
Construct Drive
121+00 Lt.



DEV CURVE DATA
 Δ 7° 03' 00" Rt.
 D 0° 30'
 R 11459.16'
 T 732.64' / 727.66'
 L 1403.18' / 1453.33'
 E 23.38'
 Chk D.C. ✓



SURVEYED BY Bustey DATE 11/20/07
 DRAWN BY Stowell DATE 1/26/08
 TRACED BY Stowell DATE 1/26/08
BERKSHIRE
 PROJ. F-ES NO. 034-1(1)
 SHEET **24** of 152



CONSTRUCT APPROACH
Sta 129+00 Lt + 21

Excavation & Removal of Road
Surfaces and/or Pavements, Item 112
135+90 Lt + 143+00 Lt + 1

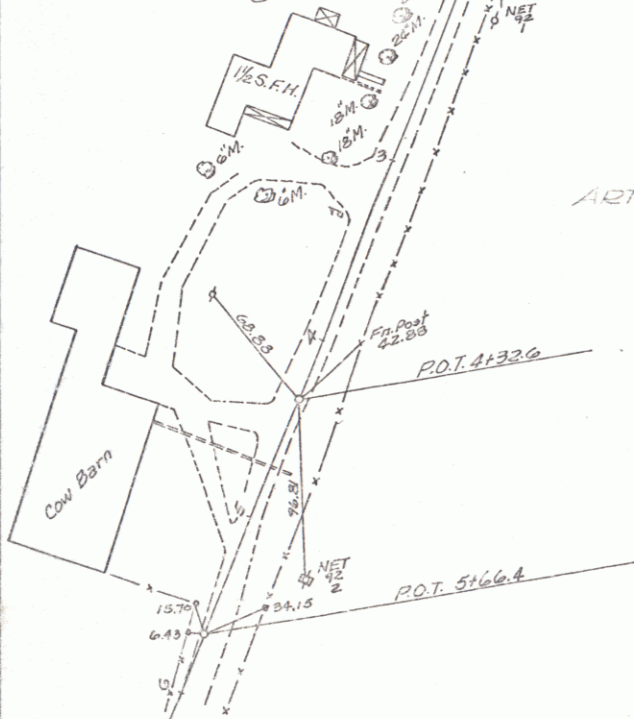
Three Cable Guard Rail
w/ Steel Posts, Item 542
132+32 Lt - 135+58 Lt
132+30 Lt - 136+02 Lt

Construct Drive
133+50 Lt + 1

Stone Fill for Slope Protection
(Light Type), Item 512
131+50 - 136+00 Lt

132+00 Lt - 136+50 Lt
Unclassified Channel
Excavation, Item 108-C

REMOVAL & DISPOSAL OF
PRESENT GUARD RAIL, ITEM 549
133+83 - 134+49 Lt + 4 Rk

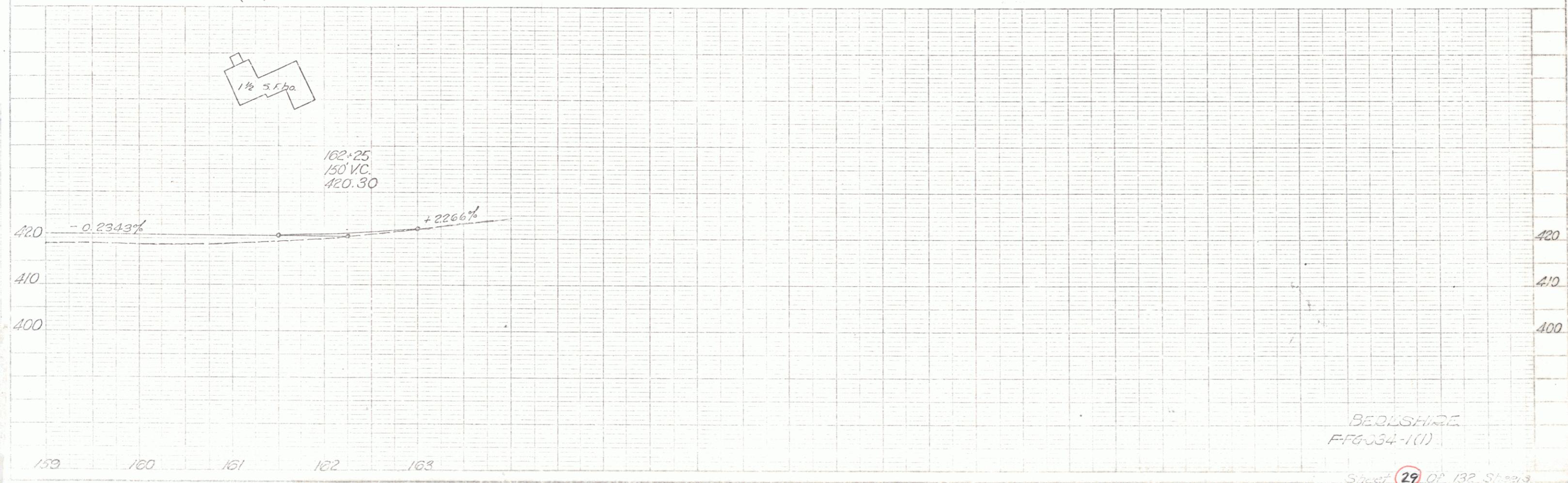
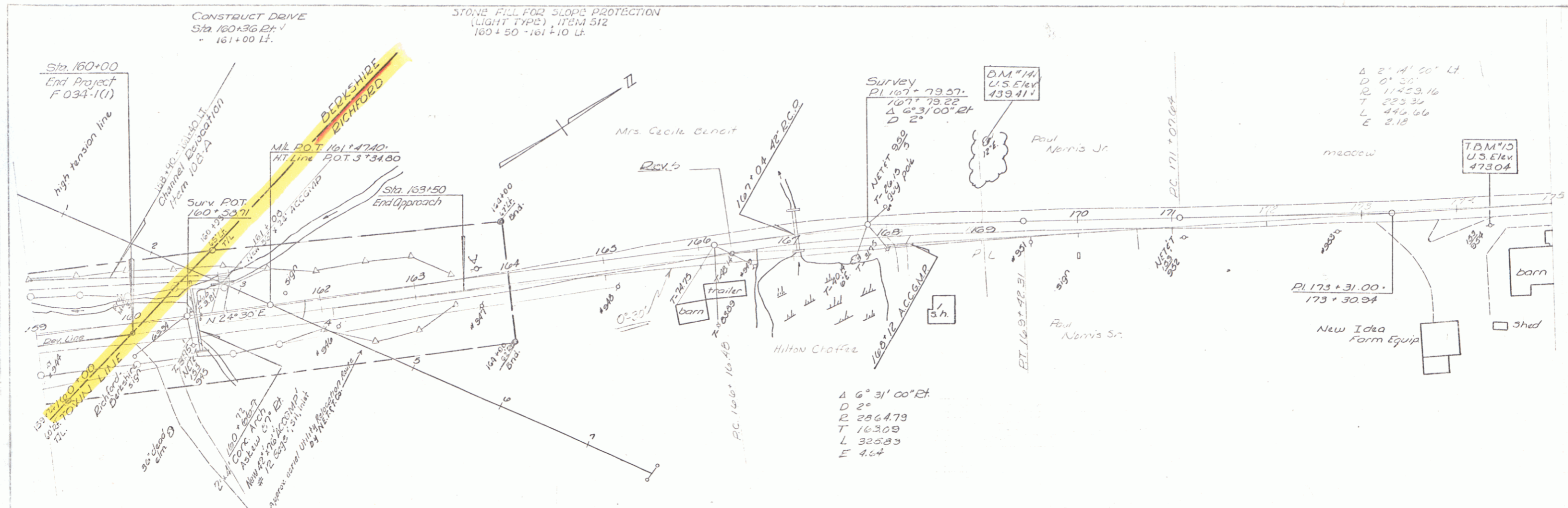


PASTURE
ARTHUR WELD

134+17 (20' 35" C.M.P. Multi-Plate
Railroad to Construct a floor in
Pipe and also a Gump
to be constructed by
Railroad Force Account.
B-# 27a



SURVEYED BY Bushey DATE 6/63
DRAWN BY Mason DATE 7/63
TRACED BY Fewell DATE 7/63
BERKSHIRE
PROJ. F.E.S. NO. 024-1(1)
SHEET 26 OF 132



2. Clark
12/63

12-63
C. W. Jones

Δ 2° 41' 20" Lt
D 0' 30"
R 11459.16
T 233.39
L 442.66
E 2.18

Δ 6° 31' 00" Rt
D 2°
R 2564.73
T 1630.9
L 325.83
E 4.64

BEDSHIRE
FFG-54-1(1)

Sheet 29 of 132 Sheets

see # 30 of 90 F 134-L

//