

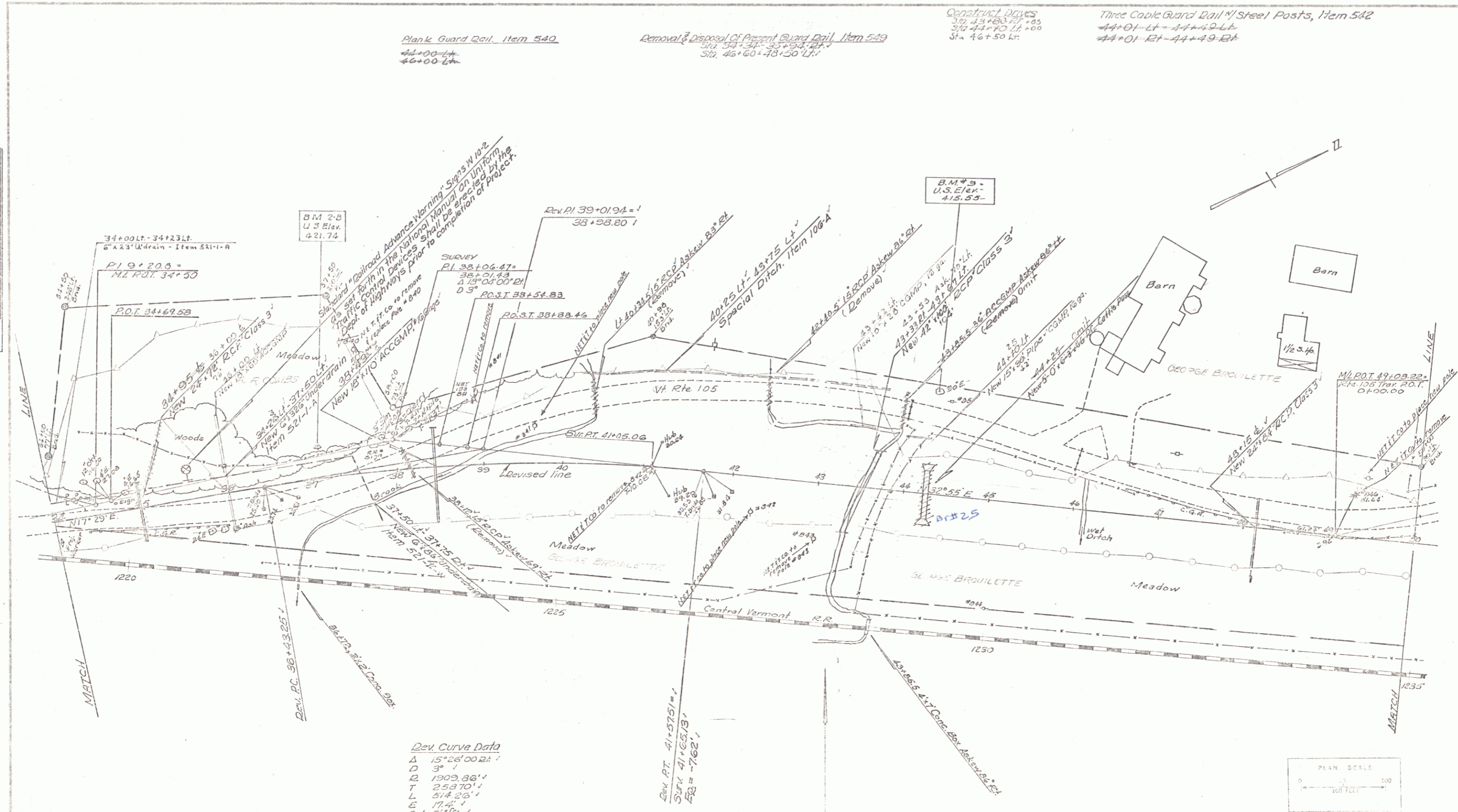
PLAN	DATE	BY
DESIGNED		
CHECKED		
APPROVED		
PROJECT		

Plank Guard Rail, Item 540
44+00 Lt.
46+00 Lt.

Removal & Disposal of Present Guard Rail, Item 549
Sta. 34+50 to 37+50 Lt.
Sta. 46+60 to 48+50 Lt.

Construct Drives
Sta. 43+80 Lt. to 45
Sta. 44+70 Lt. to 50
Sta. 46+50 Lt.

Three Cable Guard Rail w/ Steel Posts, Item 542
44+01 Lt. - 44+49 Lt.
44+01 Lt. - 44+49 Lt.



Dev. Curve Data
 Δ 15°26'00.2"
 D 3"
 R 1909.86'
 T 253.70'
 L 514.20'
 E 17.4'
 Bnk 9.5'

Dev. Pt. 41+57.5 =
 SURV. 41+65.73 =
 ELEV. = -7.62'

NOTE - New Culvert under Railroad,
 Right of Station 43+20,
 to be constructed by Railroad Force Account.



BERKSHIRE
 F-19-03-1(1)
 Sheet 14 of 18 Sheets