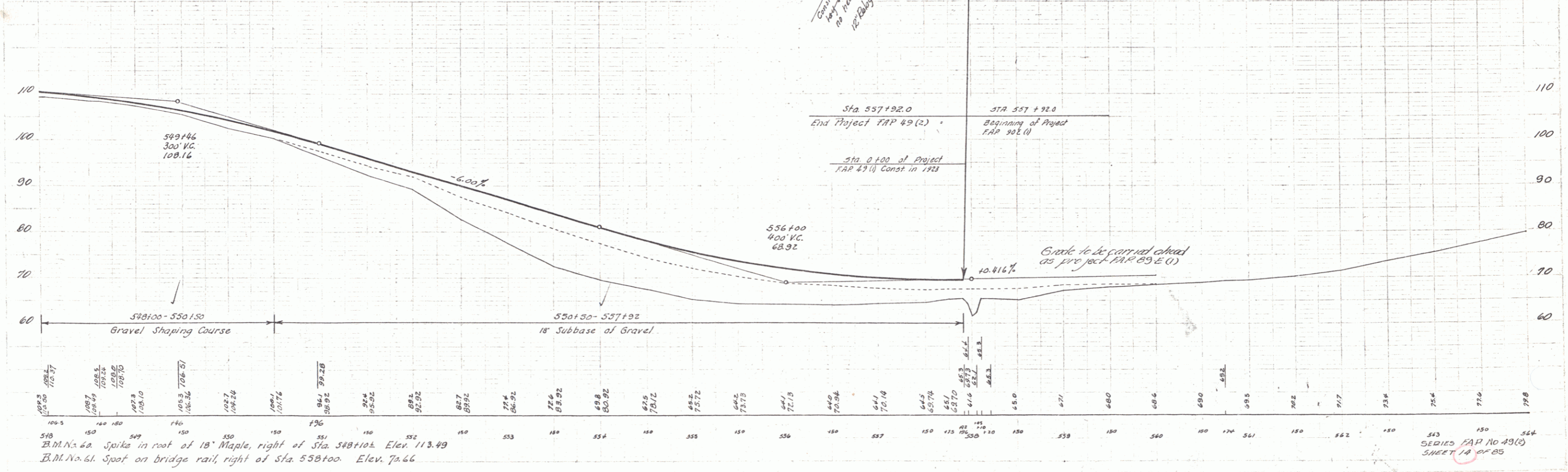
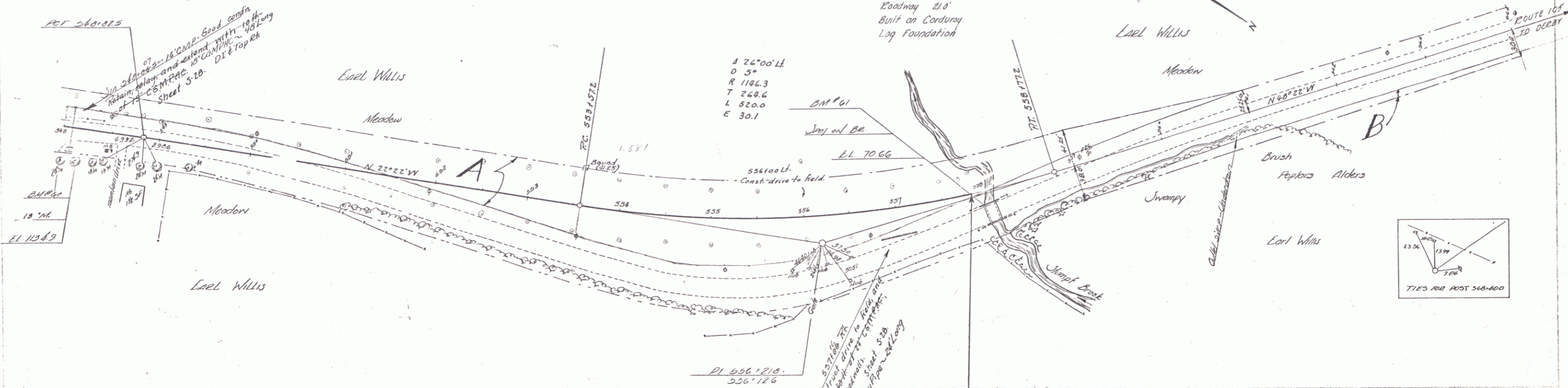


PARCEL	INSTRUMENT	DATE	GRANTOR	GRANTEE	RECORDED	REMARKS
A-B	2.C.D.	10.13.39	EARL WILLIS	STOFF	390K 23	DATE 12.13.39

OHIO STATE ROAD ENGINEERING SHEET  
 SERIES FAP NO 49(2)  
 SHEET 1A OF 85

STA 551+50-557+50  
 Remove Topsoil in accordance with  
 General Note sheet 2 of 85

Conc Bridge  
 Solid Rail Type  
 Cl Height - 40'  
 Cl Span - 100'  
 Roadway 21.0'  
 Built on Corrugated  
 Log Foundation



B.M. No. 62 Spike in roof of 18' Maple, right of Sta. 548+10± Elev. 113.49  
 B.M. No. 61 Spot on bridge rail, right of Sta. 558+00± Elev. 70.66

