

**GUARD RAIL REQUIRED**  
On Left

Sta 113+00 to Sta 116+50 Length 327 ft  
 " 120+00 " 121+12 " 24 "

On Right

116+32 - " 116+50 - 26 "  
 118+72 - " 121+12 - 340 "

Total this sheet 376'

**NEW CULVERTS REQUIRED**

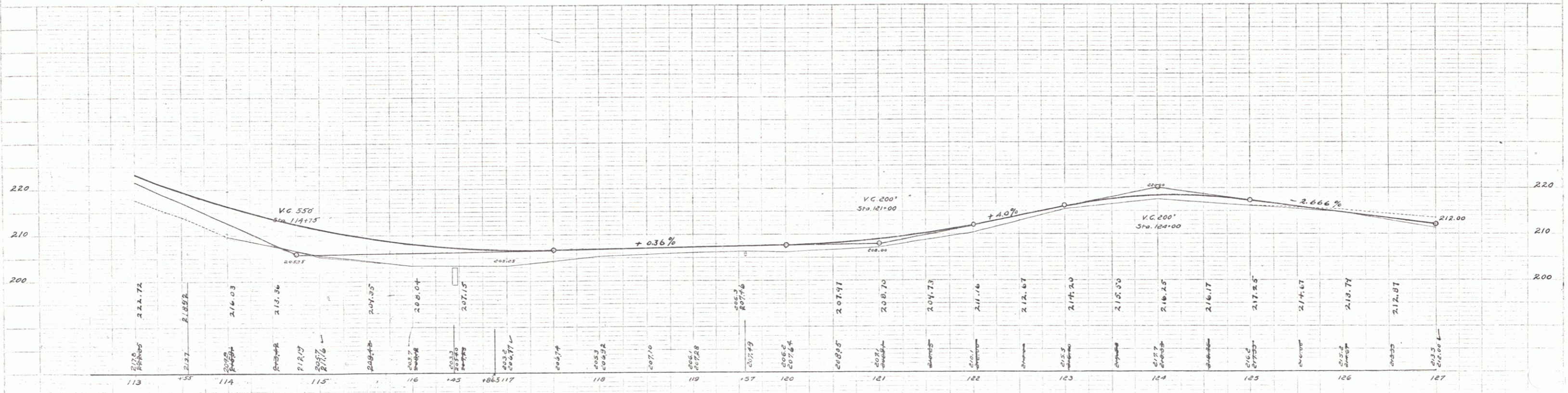
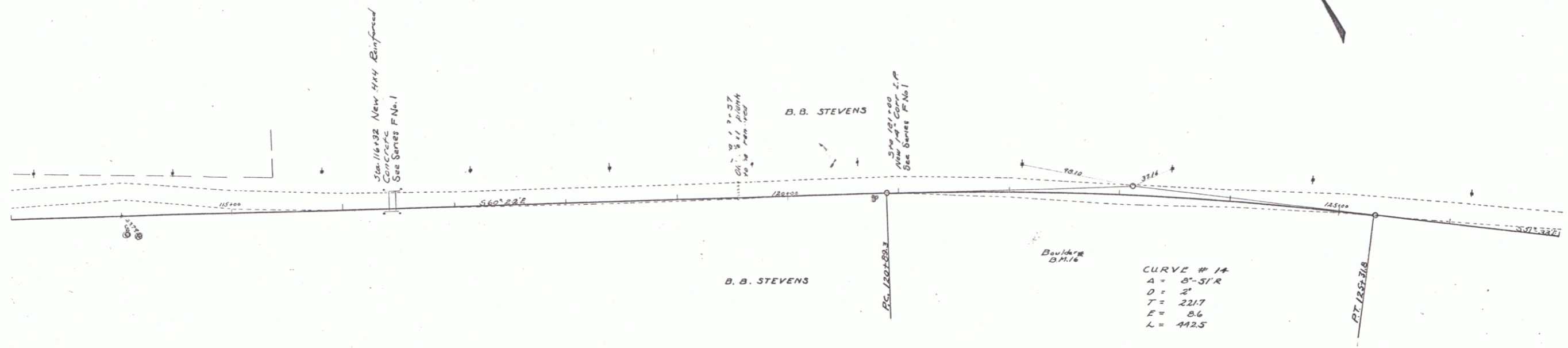
Sta 121+00 - 30' 12" Corr Iron Pipe 20' ft  
 1-2'-3" Conc. Headwalls 1 cu yd  
 4'-4" Excavation 5' 4" "

Sta 116+32 - 1-2'-4" Enforced Concrete  
 1-2'-5" 0.7 cu yd  
 1-2'-5" 15.7 lbs  
 Reinforcing Steel 275 lbs

Sta Earth Excavation 57 cu yd

**SUB BASE REQUIRED**  
Sta 118+50 to Sta 127+00 Length 850 ft  
 Sta 122+00 to Sta 127+00 Length 550 ft  
 Total this sheet 1400'

STATE	FED. AID DIST. NO.	FED. AID PROJ. NO.	FISCAL YEAR	SHEET NO.	TOTAL SHEETS
9	VI	49	1973	17	28



B.M. \*16 Top of Boulder Right of Sta. 122+60 Elev. 210.48

Series F, No. 43 Filed  
 Sheet 11 of 28