

INDEX OF SHEETS

SHEET NO	TITLE PAGE
2	TYPICAL CROSS-SECTION OF IMPROVEMENT
3	PLAN AND PROFILE STA. 0+00 TO STA 12+00
4	" " " " 12+00 " " 27+00
5	" " " " 27+00 " " 41+00
6	" " " " 41+00 " " 57+00
7	" " " " 57+00 " " 71+00
8	" " " " 71+00 " " 85+00
9	" " " " 85+00 " " 100+00
10	" " " " 100+00 " " 113+00
11	" " " " 113+00 " " 127+00
12	" " " " 127+00 " " 143+00
13	" " " " 143+00 " " 156+00
14	" " " " 156+00 " " 167+10

15-28 CROSS SECTIONS

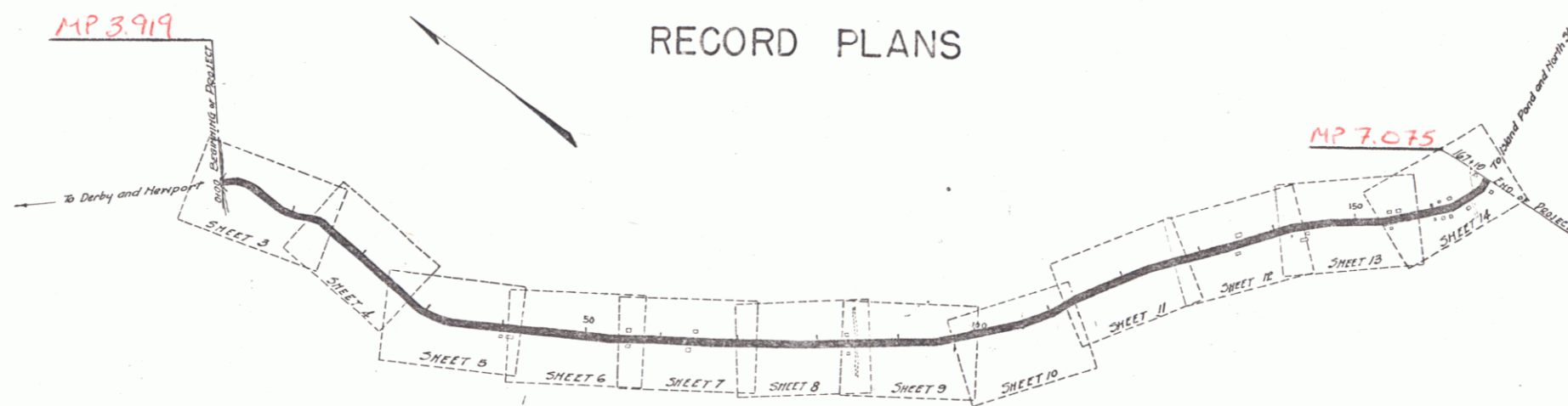
STATE OF VERMONT
STATE HIGHWAY DEPARTMENT

PLAN AND PROFILE OF PROPOSED
STATE HIGHWAY
FEDERAL AID PROJECT

TOWN OF CHARLESTON Pin#00R205
NEWPORT-NORTH STRATFORD ROAD
FROM LEWIS BRIDGE
EAST TO
EAST CHARLESTON CHURCH

SCALES { PLAN: 1 INCH = 50 FEET
PROFILE HORIZONTAL: 1 INCH = 50 FT. VERT: 1 IN. = 10 FT.
CROSS SECTIONS: 1 INCH = 5 FEET

FED. ROAD DIST. NO.	STATE	FED. AID PROJ. NO.	FISCAL YEAR	SHEET NO.	TOTAL SHEETS
3	V.T.	49	23	1	28

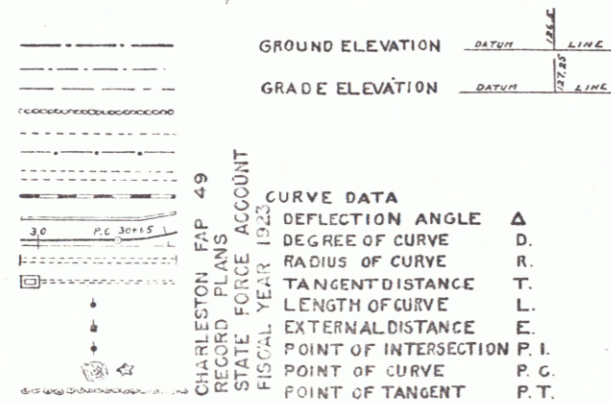


RIGHT-OF-WAY DIVISION
TOWN FILE
PERPETUAL
Town of UT 105
(To Be Returned To R.O.W. Division)

NOTE: ANY FURTHER INFORMATION CONCERNING LOCAL CONDITIONS, ADDRESS OF PROPERTY OWNERS RELATIVE TO THIS PROJECT IS TO BE OBTAINED BY ENTRY THE FIELD BOOKS OR THE SURVEY FILE.

CONVENTIONAL SIGNS

- COUNTY LINE
- TOWN LINE
- FENCE LINE
- STONE WALL
- UNFENCED PROPERTY
- GUARD RAIL
- TRAVELED WAY
- RAILROAD
- RETAINING WALL
- CENTER & SURVEY LINE
- CULVERT
- DROP INLET
- TROLLEY POLE
- POWER POLE
- TELEPHONE POLE
- TREES
- HEGGE



LAYOUT
SCALE 1 INCH = 1000 FEET

Project No. F49
Date: 11/12/3

SUBMITTED BY ORDER OF THE STATE HIGHWAY BOARD

CHIEF ENGINEER DEPARTMENT OF HIGHWAYS

RECOMMENDED

DISTRICT ENGINEER BUREAU OF PUBLIC ROADS

RECOMMENDED FOR APPROVAL

CHIEF ENGINEER BUREAU OF PUBLIC ROADS

APPROVED

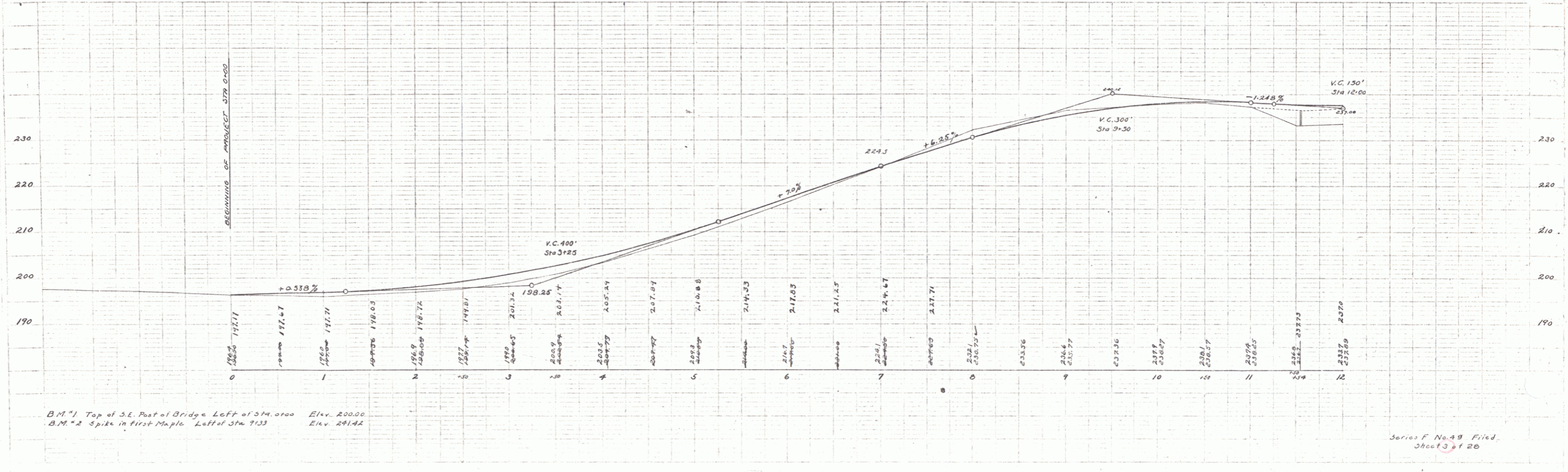
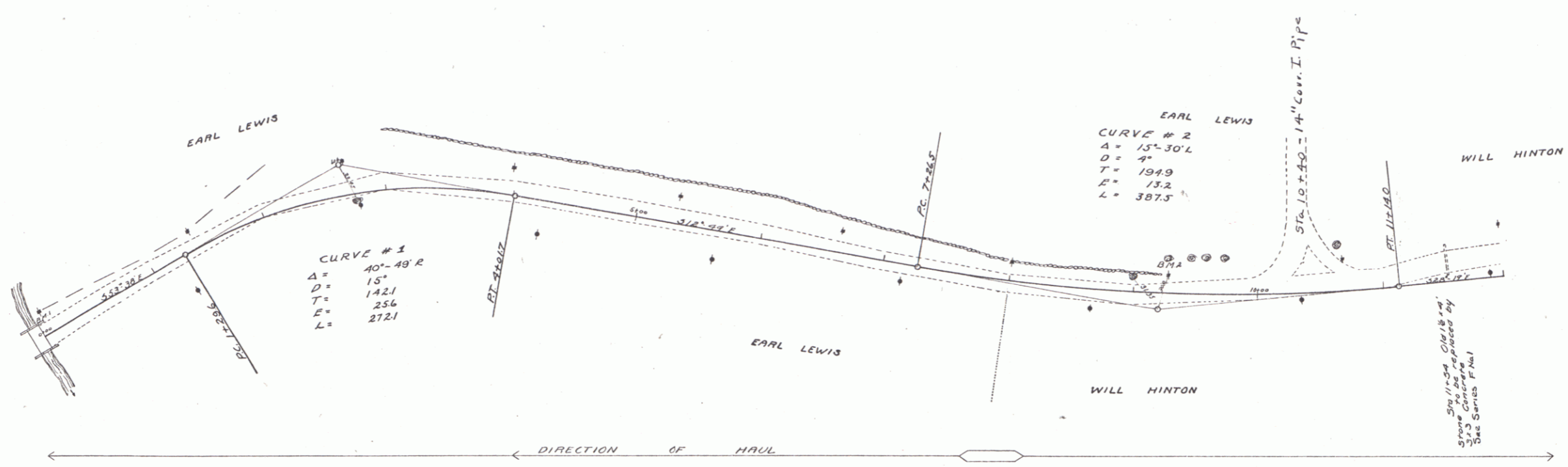
DIRECTOR BUREAU OF PUBLIC ROADS

GUARD RAIL REQUIRED
 On Left
 Sta 11+42 to Sta 11+66 length 24 ft
 On Right
 Sta 10+20 to Sta 12+00 length 180 ft
 Total this sheet 204 ft

NEW CULVERTS REQUIRED
 Sta 11+54 V 3'x3' Concrete 0.2
 1-2-4 " 1.5 cu yds
 1-2-5 " 1.5 " "
 Earth Excav. 34 " "
 Sta 10+40 14" Cor. I. Pipe 36'
 1-2-4 Concrete 2.5 cu yds

SUBBASE REQUIRED
 Sta 0+00 to Sta 3+00 length 300 ft
 Sta 0+50 to Sta 10+50 " 1000 ft
 Sta 4+00 to Sta 11+50 length 750 ft
 Total this sheet 2050 ft
 Sta 10+55 to Sta 11+35 length 80 ft

PER. ROAD	DATE	PER. NO.	PLAN. NO.	SHEET NO.	TOTAL SHEETS
7	7	4.9	1923	3	20



B.M. #1 Top of S.E. Post of Bridge Left of Sta. 0+00 Elev. 200.00
 B.M. #2 Spike in first Maple Left of Sta 1+33 Elev. 241.42

Series F No. 49 Filed
 Sheet 3 of 20

GUARD RAIL REQUIRED

ON LEFT

Sta 14+92 to Sta 15+16	length 24 ft
16+95	24 ft
20+03	24 ft
26+42	24 ft

ON RIGHT

Sta 12+00 to Sta 13+80	380 ft
16+95	24 ft
19+26	24 ft
22+26	36 ft
26+66	40 ft
32+00	32 ft
32+00	32 ft

Total this sheet = 1220 ft

NEW CULVERTS REQUIRED

Sta 15+04	2x2 Concrete	7.00 cu yds.
	1-2-4	8.90-7 "
	1-2-5	28 "
	Earth Excavation	1.0x14 28'
	1/4" Conc. Drop Inlet	
Sta 17+07	1-2-4 Concrete	18.5-8 cu yds.
	1-2-5	7-8 "
	Earth Excavation	10 "
Sta 20+13	12" Cor Iron Pipe	18 ft
	1-2-5 Conc Headwalls	1.5 cu yd.
Sta 26+34	2x2 Concrete	5.4
	1-2-4	5.2 cu yd
	1-2-5	6.75 "
	Earth Excavation	27 "

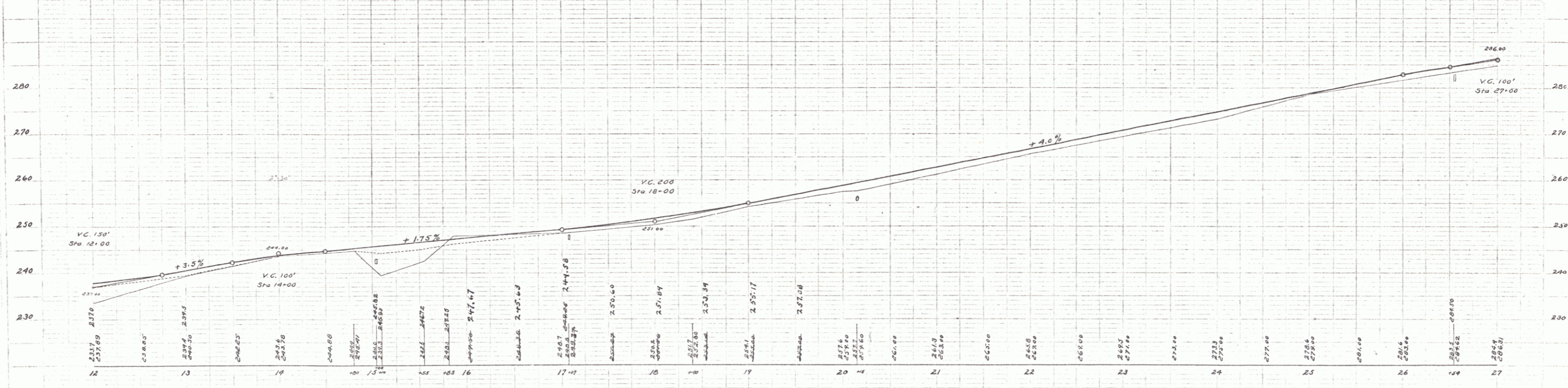
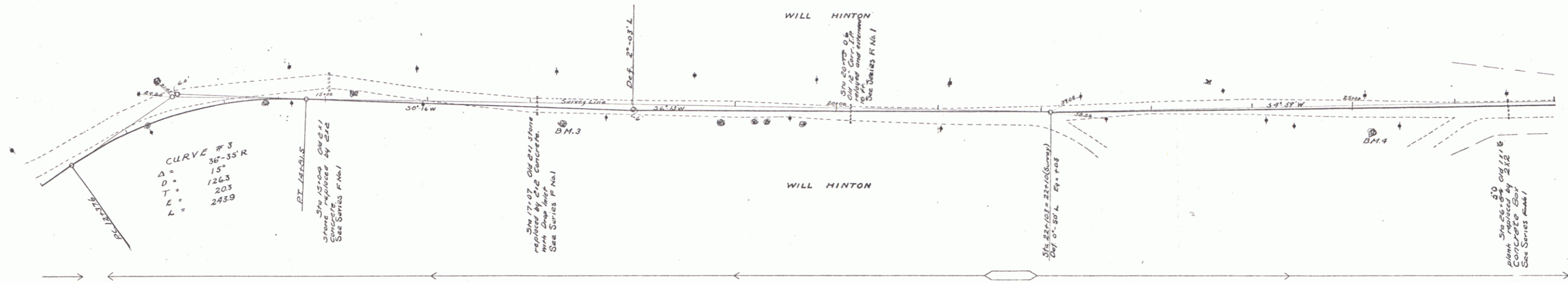
RELAYING PIPE CULVERTS

Sta 20+13 Old 12" Cor Iron Pipe 18 ft

SUB BASE REQUIRED

Sta 13+0 to Sta 14+30	length 140 ft
Sta 14+00 to Sta 15+10	length 110 ft
Sta 15+00 to Sta 22+50	length 700 ft
Sta 15+05 to Sta 27+00	length 1195 ft
Total this sheet 1225 ft	
Sta 15+30 to Sta 15+60	length 30 ft

FED. ROAD DIST. NO.	STATE	FED. AID PROJ. NO.	VISUAL PROJ. NO.	SHEET NO.	TOTAL SHEETS
7	VT	43	1221	4	20



B.M. #3 Spike in 12" Maple Rt of Sta 17+31 Elev 247.48
 B.M. #4 " " " " Sta 25+19 Elev 277.40

Series F No 49 filed
 Spec 4 of 20

GUARD RAIL REQUIRED

On Left

Sta	43+04	to sta	43+20	length	24 ft
	47+70	"	47+97	"	24 ft
	49+73	"	49+97	"	24 ft

On Right

Sta	43+04	to sta	43+20	length	24 ft
	43+00	"	51+40	"	600 ft

Total this sheet 736 ft

NEW CULVERTS REQUIRED

Sta	43+16	12" Corr. Iron Pipe 24 ft
		1-2-3 Conc. Headwalls 11 cu. yd.
		Earth Excavation 2.1 "
Sta	47+02	12" Corr. Iron Pipe 24 ft
		1-2-3 Conc. Headwalls 11 cu. yd.
		Earth Excavation 2 "
Sta	49+03	12" Corr. Iron Pipe 39 ft
		1-2-3 Conc. Headwalls 1 cu. yd.
		Earth Excavation 9 "

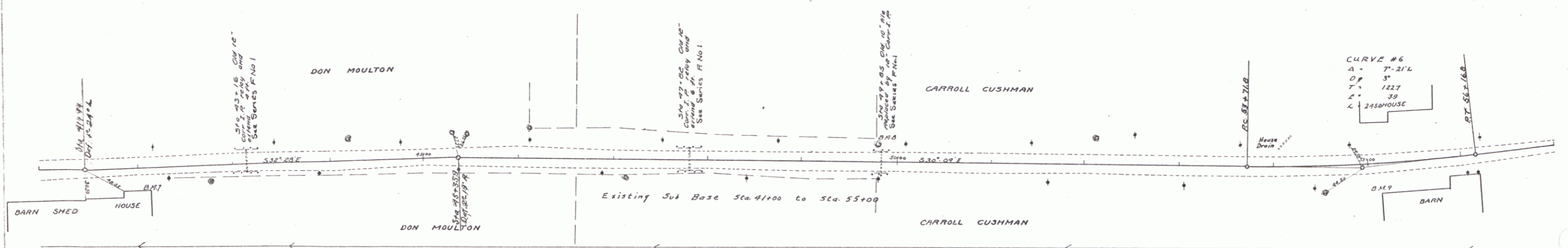
RELAYING PIPE CULVERTS

Sta	43+16	12" Corr. Iron Pipe 24 ft	NOT relayed
Sta	47+02	12" Corr. Iron Pipe 24 ft	NOT relayed

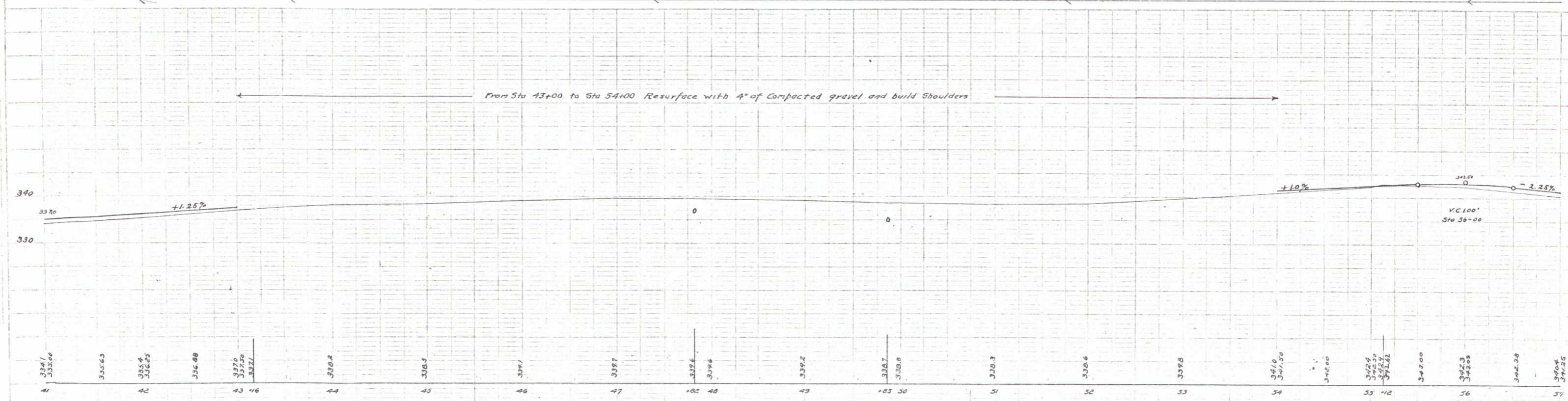
SUB BASE REQUIRED

Sta	35+00	to sta	37+00	length	200 ft
-----	-------	--------	-------	--------	--------

FED. ROAD DIST. NO.	STATE	FED. AID PROJ. NO.	FISCAL YEAR	SHEET NO.	TOTAL SHEETS
9	VT	49	1943	6	28



CURVE #6
 A = 7'-21" L
 DP = 3"
 T = 122'
 E = 38'
 C = 2450 HOUSE
 PT. 55+16.8



BM 7 Top of Concrete S.E. corner of House Right of Sta 42+15 Elev 336.57
 BM 8 Spike in back side of 30' Maple Left of Sta 47+02 Elev 340.74
 BM 9 Stone N.E. corner Barn Foundation Right of Sta 55+12 Elev 345.55

5

GUARD RAIL REQUIRED
 ON LEFT
 Sta 62+97 to Sta 63+21 length 24 ft.
 " 70+10 " " 70+42 " 24 ft.
 ON RIGHT
 Sta 62+75 to Sta 63+79 length 104 ft.
 " 70+10 " " 70+42 " 24 ft.
 Total this sheet 176 "

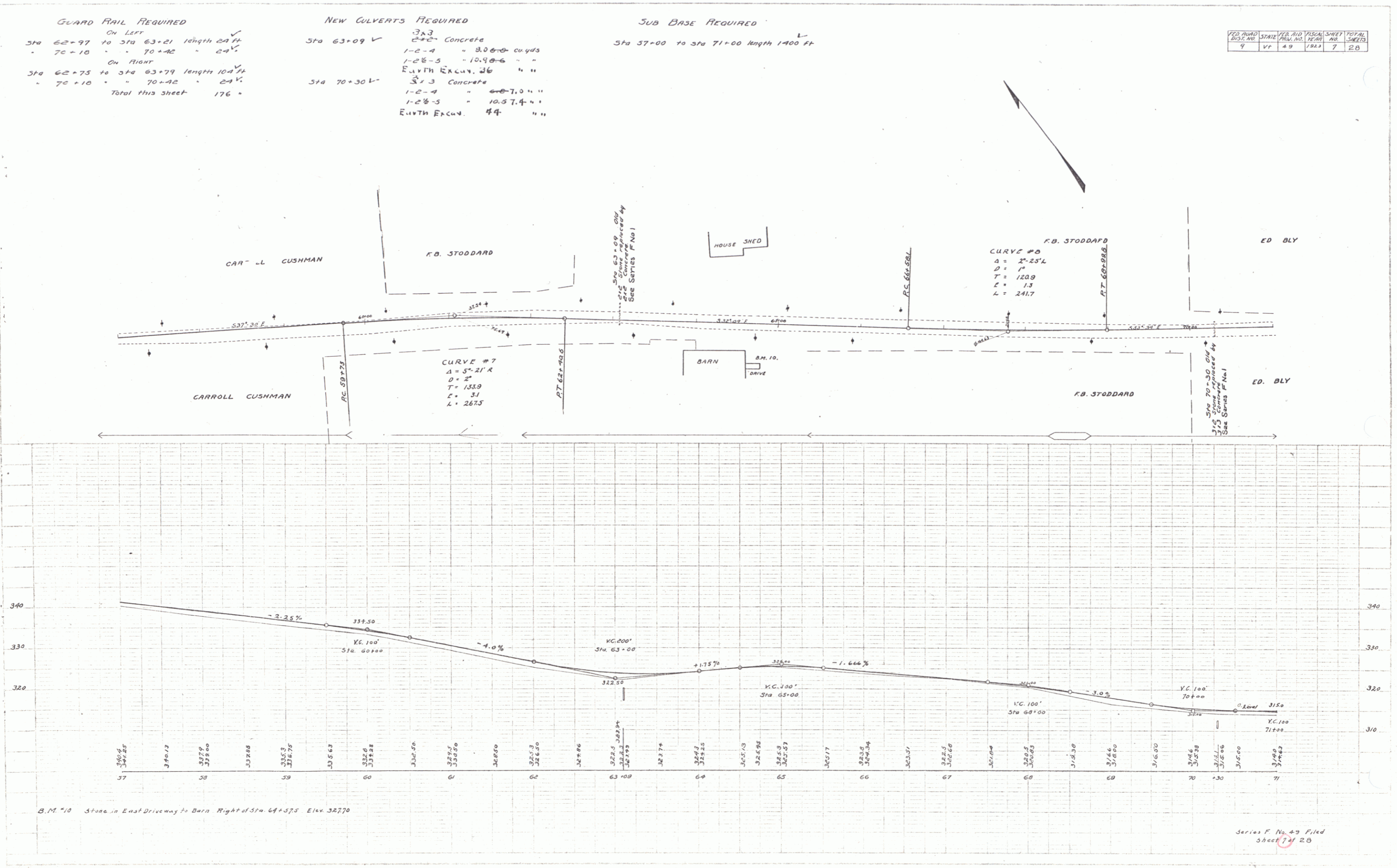
NEW CULVERTS REQUIRED
 Sta 63+09 ✓
 3x3 Concrete
 1-2-4 " 8.06 cu yds
 1-2-5 " 10.98 " "
 EARTH EXC. 26 " "
 Sta 70+30 ✓
 3x3 Concrete
 1-2-4 " 7.0 " "
 1-2-5 " 10.57 " "
 EARTH EXC. 44 " "

SUB BASE REQUIRED
 Sta 57+00 to Sta 71+00 length 1400 ft

NO. SHEETS	STATE	FEEDING	DESIGN	TOTAL
9	VT	49	1923	7 20

H.E. Walker
 G.L. Fraw
 1/25/23

H.E. Walker
 G.L. Fraw
 W.S. Young
 1/25/23



GUARD RAIL REQUIRED

Sta	On Left	On Right
74+39	to Sta 74+63 length 24 ft	
78+62	" " 79+66 " 104 ft	
84+80	" " 85+00 " 12 ft	
74+39		to Sta 74+63 length 24 ft
78+25		" " 81+43 " 320 ft
84+80		" " 85+00 " 12 ft

Total this sheet 496'

NEW CULVERTS REQUIRED

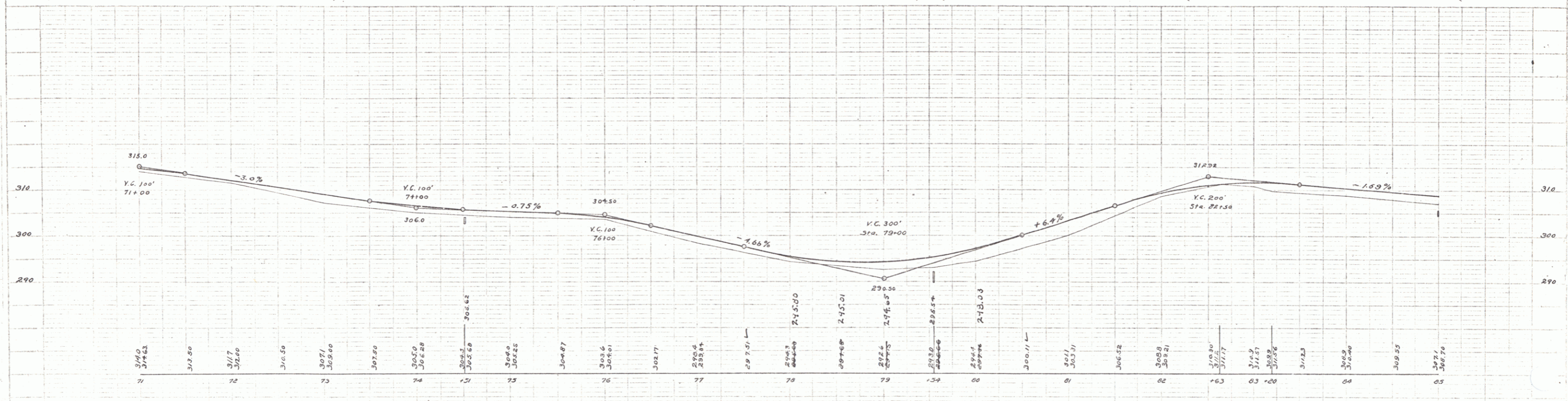
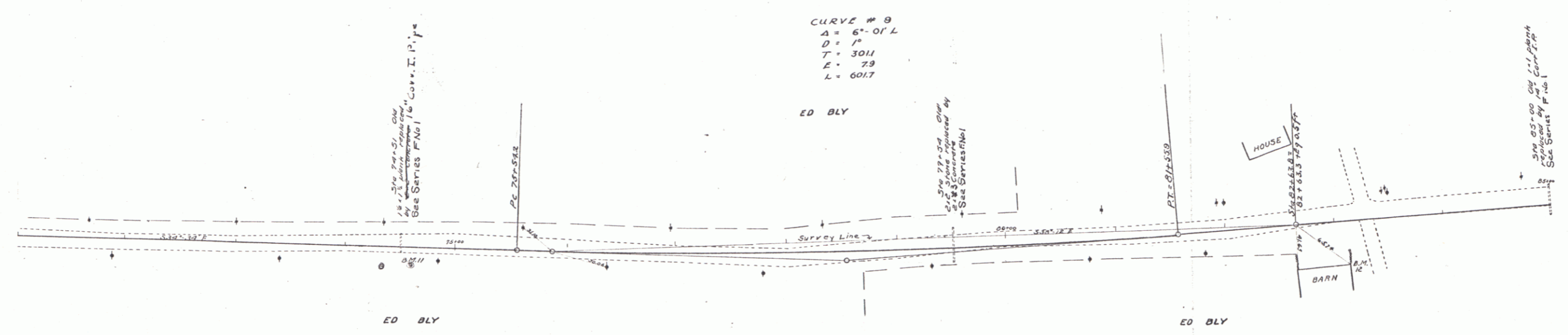
Sta	Details
74+51	16" Corv. I. Pipe 30' Concrete
79+54	Earth Excav 1 " " Concrete
85+00	14" Corv. Iron Pipe 32 ft Conc. Headwalls 1 cu. yd. Earth Excav. 9 " "

SUB BASE REQUIRED

Sta	Length
71+00 to Sta 74+50	length 350 ft
81+30 " " 85+00	" 370 "

Total this sheet 720'

DATE	BY	CHKD	SCALE	SHEET	TOTAL
9	VA	49	1/2" = 1'	8	28



B.M. #11 Spike in 24" Maple Right of Sta 74+60 Elev 303.48
 B.M. #12 Top of Stone N.E. corner of Barn Right of Sta 83+13 Elev 307.77

Series F No. 49 Filed
 Sheet 8 of 28

GUARD RAIL REQUIRED ON LEFT

Sta 85+00 to Sta 85+12	length	12 ft
- 87+70 - 87+94	-	24 ft
- 91+13 - 91+37	-	24 ft
- 95+85 - 96+09	-	24 ft

ON RIGHT

Sta 85+00 to Sta 85+12	length	12 ft
- 87+70 - 87+94	-	24 ft
- 91+13 - 91+37	-	24 ft
- 95+85 - 96+09	-	24 ft

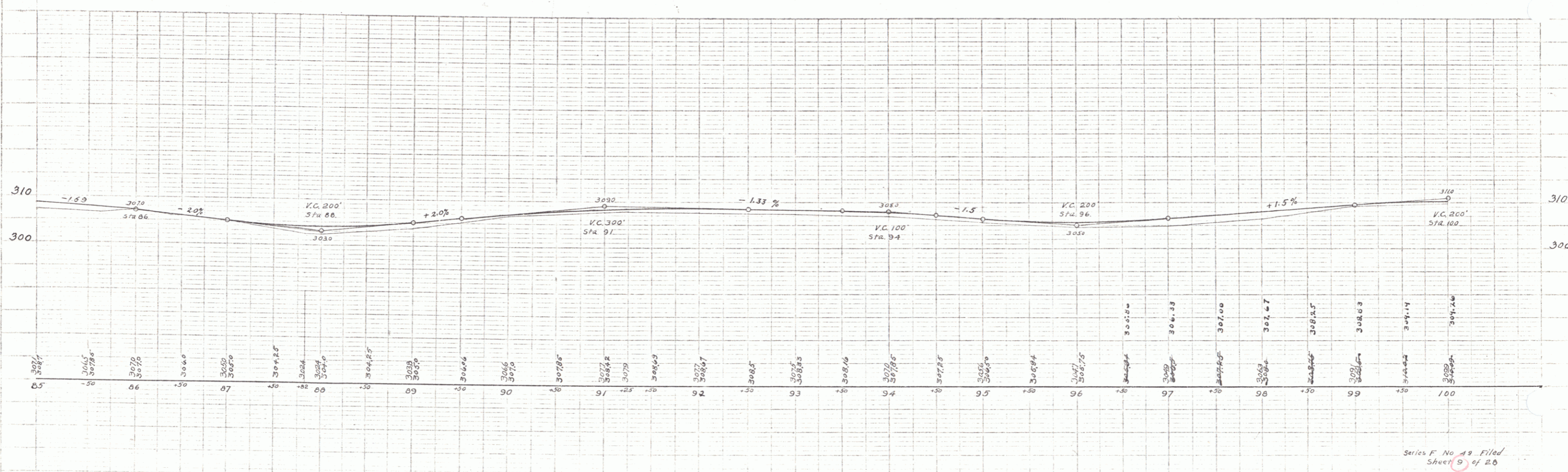
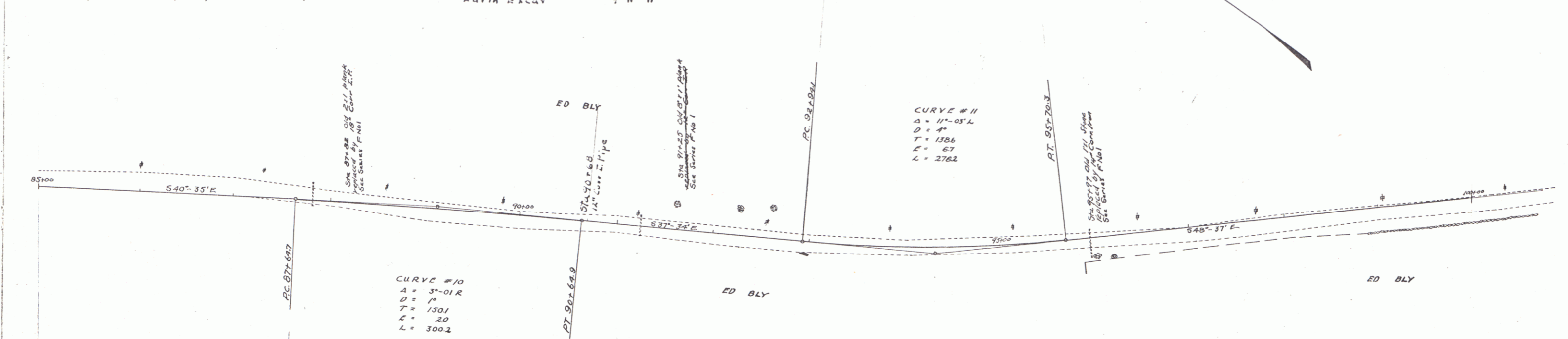
NEW CULVERTS REQUIRED

Sta 87+02	18" Cor Iron Pipe	20 ft
	1-22-5 Conc. Headwalls	1.5 cu yd
	Earth ELEV.	10 " "
Sta 94+26	12" Cor Iron Pipe	20 ft
	1-22-5 Conc. Headwalls	1 cu yd
	Earth ELEV.	8 " "
Sta 95+97	1-14" Cor Iron Pipe	30 ft
	1-22-5 Conc. Headwalls	1 cu yd
	Earth ELEV.	9 " "

SUB BASE REQUIRED

Sta 85+00 to Sta 94+50	length	1450 ft
Sta 94+50 to Sta 100+00	length	550 ft

NO. ADJ. SHEET NO.	NO. SHEETS	NO. SHEETS	TOTAL SHEETS
7	9	1423	9 20



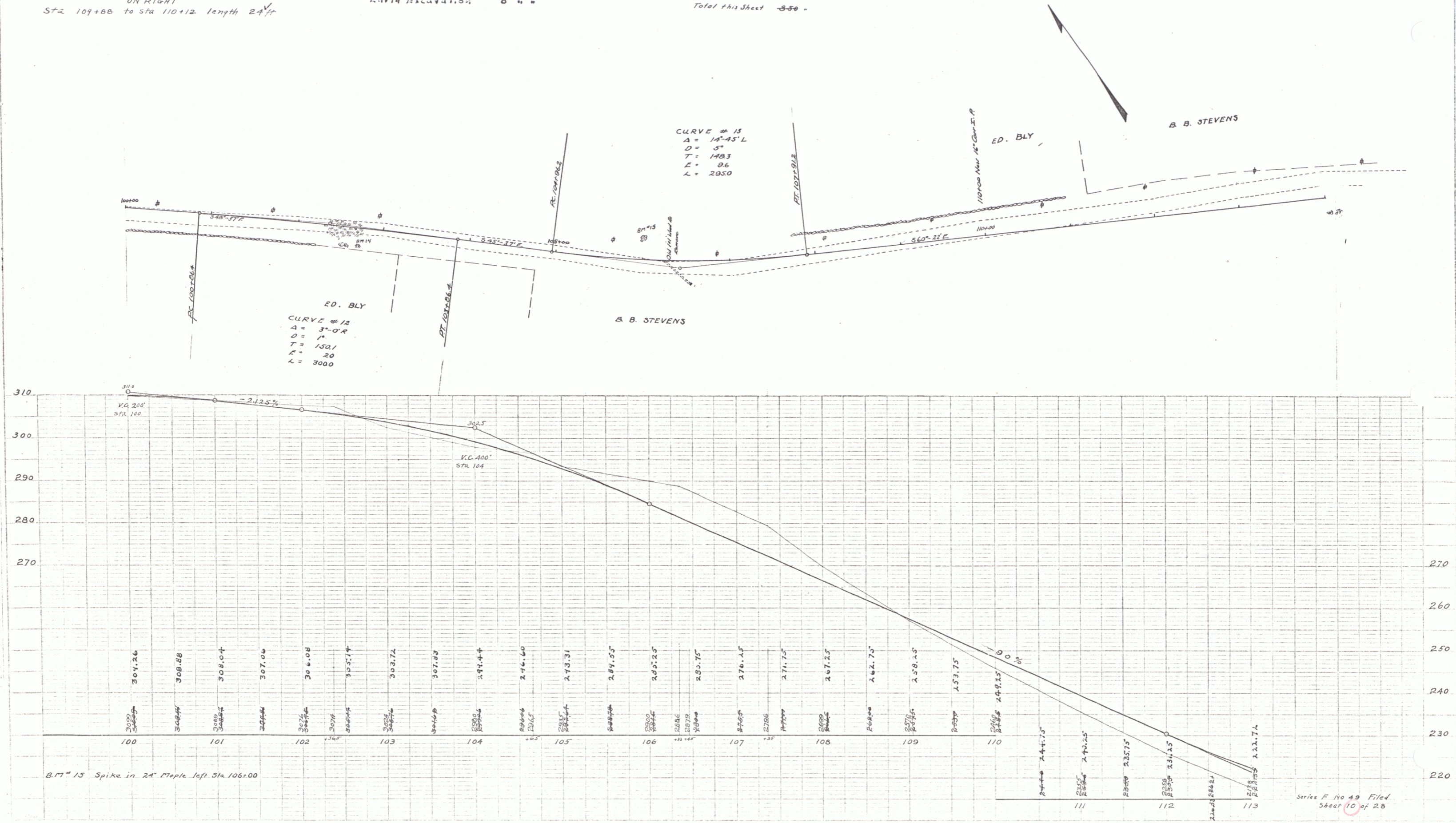
Series F No 19 Filed
Sheet 9 of 20

GUARD RAIL REQUIRED
ON LEFT
Sta 109+00 to Sta 110+12 length 24 ft
111+76 " 113+00 " 124 ft
ON RIGHT
Sta 109+00 to Sta 110+12 length 24 ft

NEW CULVERTS REQUIRED
Sta 110+00 1-1/2' Corrugated Iron Pipe 30 ft
1-2' Conc. Headwalls 15' x 15'
RIP RAP REVISION 8" x 4"

SUB BASE REQUIRED
Sta 100+00 to Sta 102+00 length 200 ft
103+00 " " 109+00 " 600 ft
Total this Sheet 850'

NO	DATE	BY	CHKD	DATE	NO	DATE
1	1/15	YF	49	1/13	10	20



Series F No 49 Filed
Sheet 10 of 28

GUARD RAIL REQUIRED
On Left

Sta. 113+00 to Sta. 116+50 Length 327 ft
 " 120+00 " 121+12 " 24' "

On Right

116+32 - " 116+50 - 26' -
 118+70 - " 121+12 - 240' -
 Total this sheet 346'

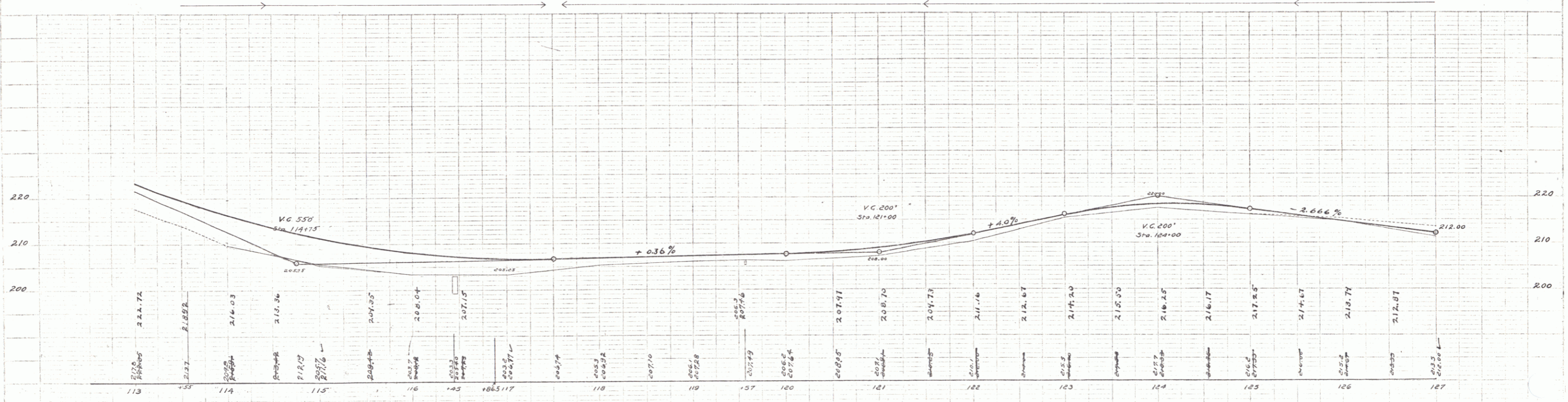
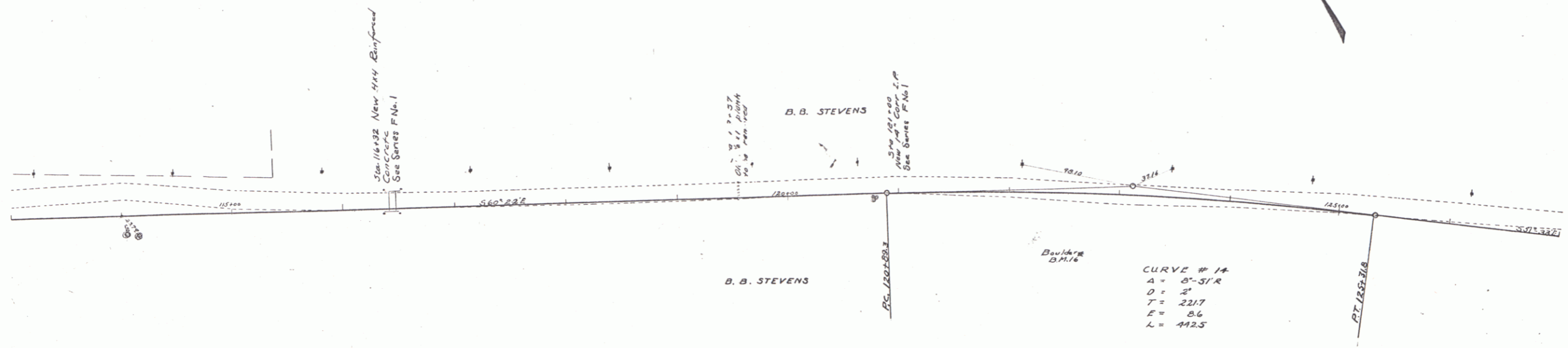
NEW CULVERTS REQUIRED

Sta 121+00
 15" Cor Iron Pipe 30 ft
 1-2-3 Conc. Headwalls 1 cu yd
 4-4" Excavation 5' 4" "

Sta 116+32
 1-2-4 Enforced Concrete
 1-2-4 0.7 cu yd
 1-2-5 " " " "
 Reinforcing Steel 275 lbs
 Earth Excavation 57 cu yd

SUB BASE REQUIRED
 Sta 118+50 to Sta 127+00 Length 850 ft
 Sta 122+00 to Sta 127+00 Length 550 ft
 Total this sheet 1400'

STATE	FED. AID DIST. NO.	FED. AID PROJ. NO.	FISCAL YEAR	SHEET NO.	TOTAL SHEETS
9	VI	49	1973	17	28



B.M. 16 Top of Boulder Right of Sta. 122+60 Elev. 210.48

Series F, No. 43 Filed
 Sheet 11 of 28

GUARD PILE REQUIRED

On LEFT		On RIGHT	
Sta 130+00 to Sta 131+12	length 24 ft	Sta 130+00 to Sta 131+12	length 24 ft
- 139+24	- 139+48 - 24'	- 135+28	- 136+00 - 72'
- 142+56	- 142+80 - 24'	- 139+24	- 139+48 - 24'
		- 142+56	- 143+00 - 44'
Total this sheet 236 ft			

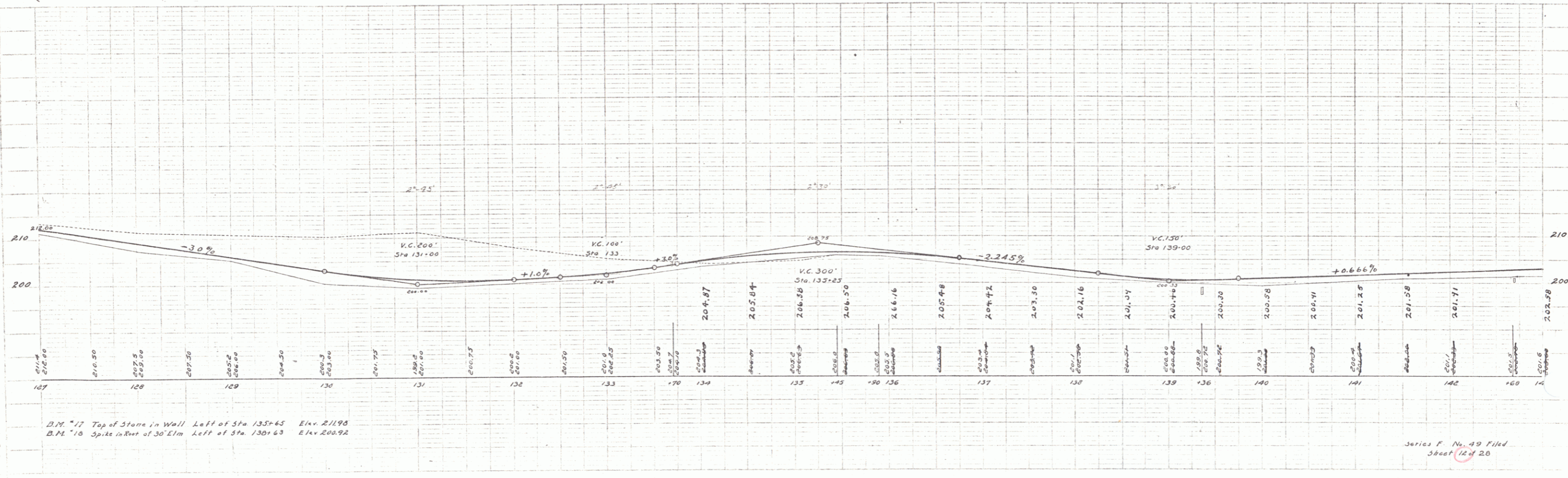
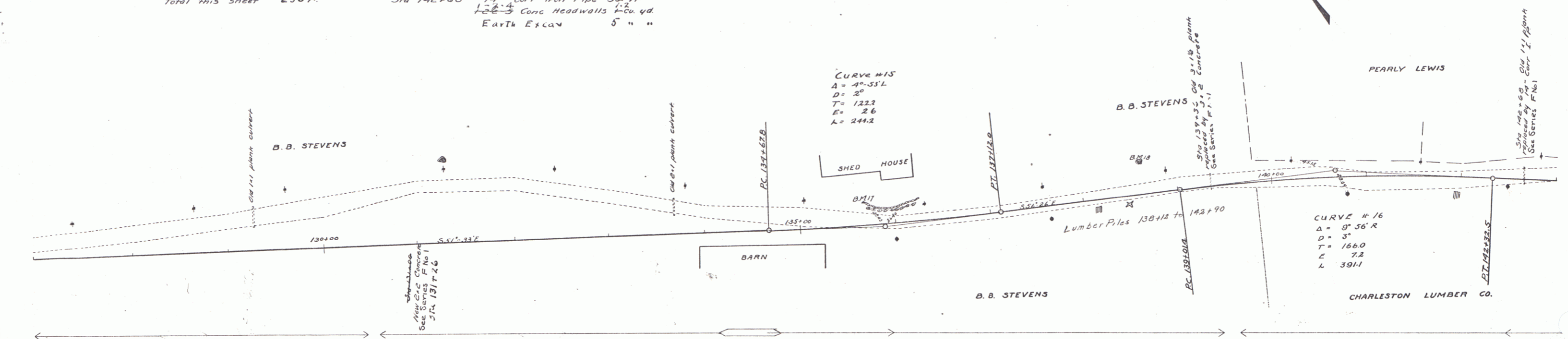
NEW CULVERTS REQUIRED

Sta 131+26	2x2 Concrete	5.3 cu yds
Sta 131+00	1-2-4 " "	7.5 "
	1-2-6-8 " "	37 " "
	Earth Excavation	37 " "
Sta 139+36	3x2 Concrete	6.87 cu yds
	1-2-4 " "	7.8 "
	1-2-6-8 " "	70 " "
	Earth Excav.	70 " "
Sta 142+60	1-2-4 Corc Iron Pipe	38 ft
	1-2-6-8 Corc Headwalls	1-2 cu yd
	Earth Excav	5 " "

SUB BASE REQUIRED

Sta 127+00 to Sta 143+00	length 1600 ft.
--------------------------	-----------------

FED. ROAD DIST. NO.	STATE	FED. AID PROJ. NO.	FISCAL YEAR	SHEET NO.	TOTAL SHEETS
9	VT	49	1923	22	20



B.M. 11 Top of Stone in Wall Left of Sta 135+65 Elev 211.90
 B.M. 10 Spike in Root of 30' Elm Left of Sta 130+63 Elev 200.92

Series F. No. 49 Filed
 Sheet 12 of 20

W. E. Houghton
 O. L. Houghton
 D. F. Houghton
 5/28/23

W. E. Houghton
 O. L. Houghton
 D. F. Houghton
 5/28/23

