

GUARD RAIL REQUIRED

On Left

Sta	43+04	to sta	43+20	length	24 ft
-	47+70	-	47+97	-	24 ft
-	49+73	-	49+97	-	24 ft

On Right

Sta	43+04	to sta	43+20	length	24 ft
-	43+00	-	51+40	-	600 ft

Total this sheet 736 ft

NEW CULVERTS REQUIRED

Sta	43+16	12" Corr. Iron Pipe 24 ft
		1-2-3 Conc. Headwalls 11 cu. yd.
		Earth Excavation 2.1 "
Sta	47+02	12" Corr. Iron Pipe 24 ft
		1-2-3 Conc. Headwalls 11 cu. yd.
		Earth Excavation 2 "
Sta	49+03	12" Corr. Iron Pipe 39 ft
		1-2-3 Conc. Headwalls 1 cu. yd.
		Earth Excavation 9 "

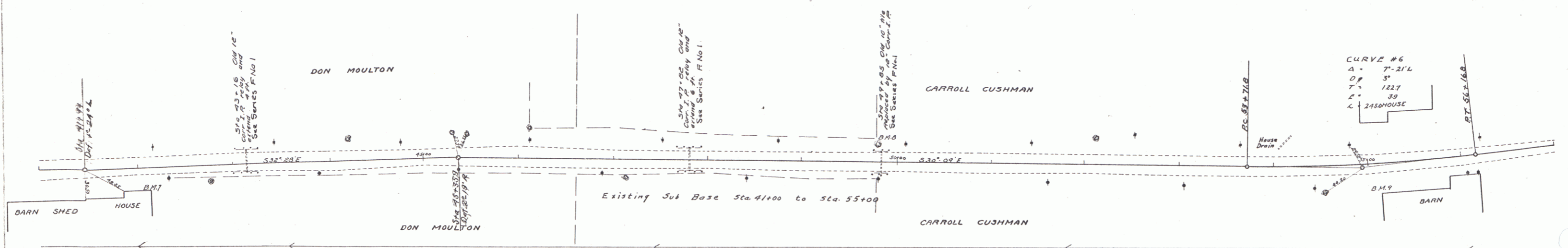
RELAYING PIPE CULVERTS

Sta	43+16	12" Corr. Iron Pipe 24 ft	NOT relayed
Sta	47+02	12" Corr. Iron Pipe 24 ft	NOT relayed

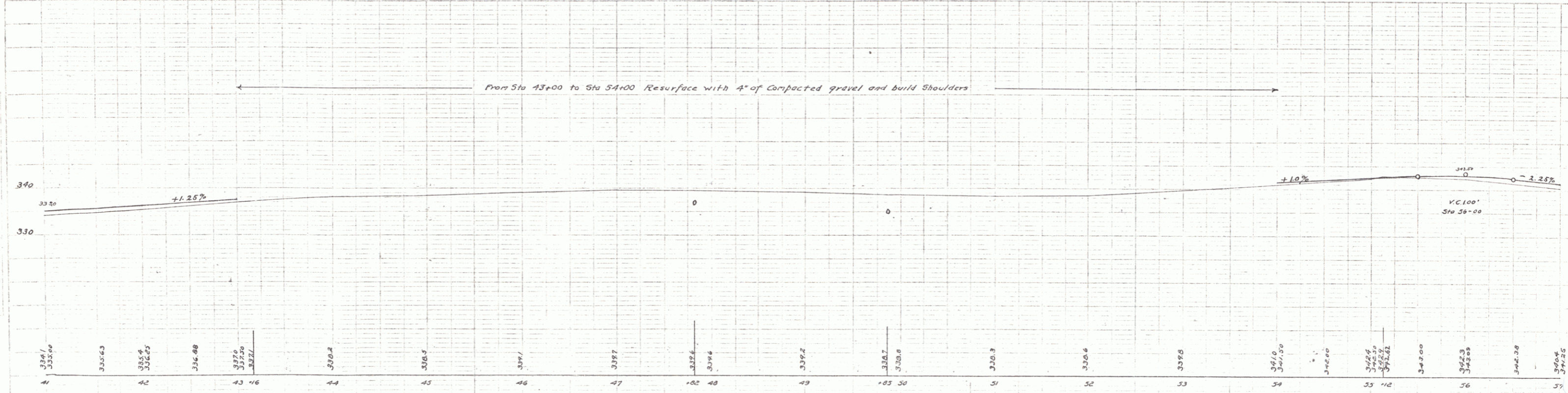
SUB BASE REQUIRED

Sta	35+00	to sta	37+00	length	200 ft
-----	-------	--------	-------	--------	--------

FED. ROAD DIST. NO.	STATE	FED. AID PROJ. NO.	FISCAL YEAR	SHEET NO.	TOTAL SHEETS
9	VT	49	1943	6	28



CURVE #6
 A = 7'-21" L
 DP = 5'
 T = 122'
 E = 38'
 C = 2450 HOUSE
 PT. 55+16.8



BM 7 Top of Concrete S.E. corner of House Right of Sta 42+15 Elev 336.57
 BM 8 Spike in back side of 30' Maple Left of Sta 47+02 Elev 340.74
 BM 9 Stone N.E. corner Barn Foundation Right of Sta 55+12 Elev 345.55

5