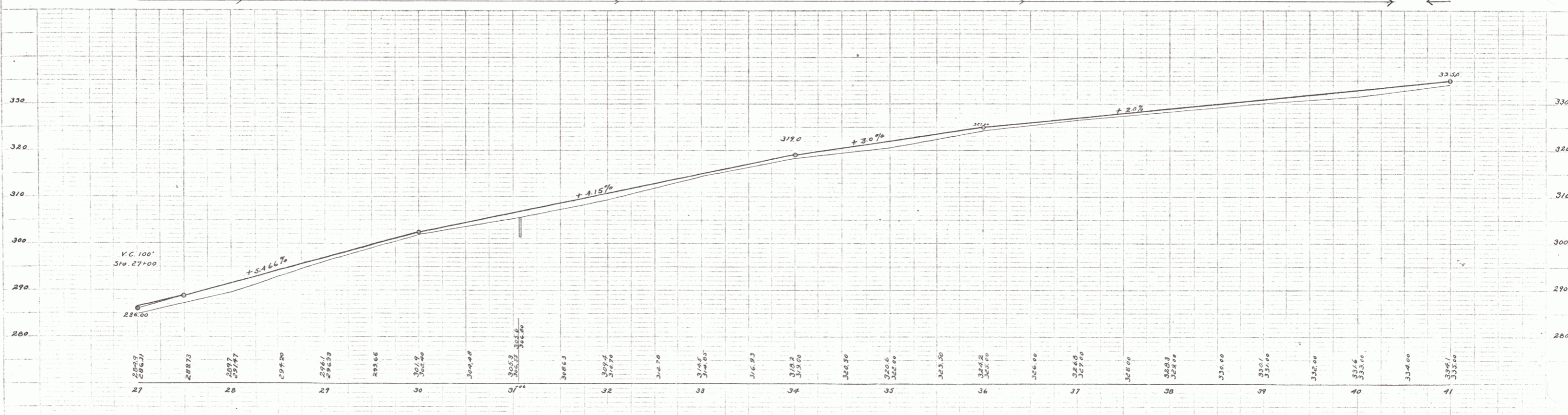
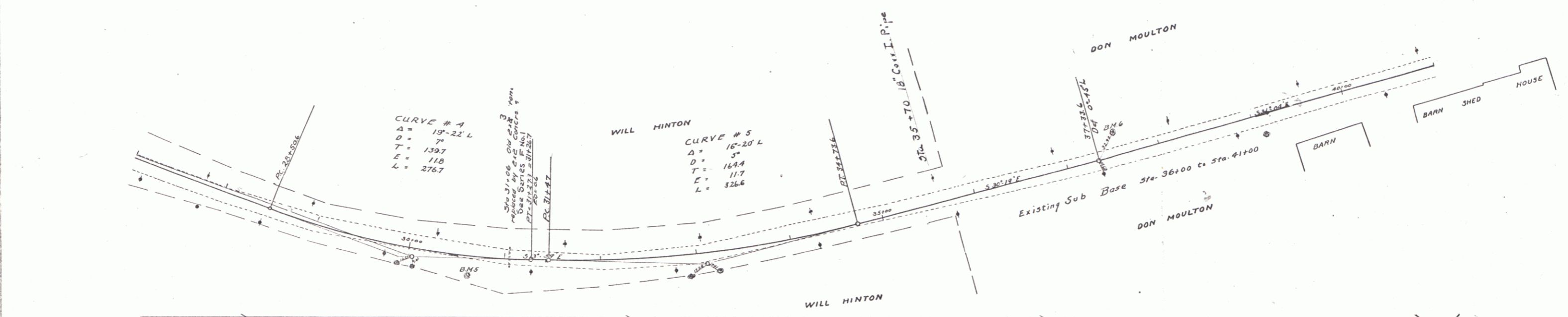


**GUARD RAIL REQUIRED**  
 On Left  
 Sta 30+94 to Sta 31+18 length 24 ft  
 On Right  
 Sta 30+94 to Sta 31+18 length 24 ft  
 Total this sheet 40 ft

**NEW CULVERTS REQUIRED**  
 Sta 31+06 3 Concrete 6.28 cu yds  
 1-2' " " 0.281 " "  
 1-2' " " 23 " "  
 Earth Excavation 23 " "  
 Sta 35+70 18" Cor. I. Pipe 30'  
 1-2' " Concrete 1.5 cu yds  
 Earth Excavation 8 " "

**SUB BASE REQUIRED**  
 Sta 27+00 to Sta 36+00 length 900 ft  
 8.5"

FED. ROAD DIST. NO.	STATE	FED. AID PROJ. NO.	FISCAL YEAR	SHEET NO.	TOTAL SHEETS
7	VT	48	1923	5	20



DM # 5 Spike in 12" Maple Right of Sta 30+63 Elev. 303.15  
 DM # 6 " " " " Left of Sta 37+33 Elev. 329.87

Series F No 49 Filed  
 Sheet 5 of 20