

**GUARD RAIL REQUIRED**

ON LEFT

Sta 14+92 to Sta 15+16	length 24 ft
16+95	24 ft
20+03	24 ft
26+42	24 ft

ON RIGHT

Sta 12+00 to Sta 13+80	380 ft
16+95	24 ft
19+26	24 ft
22+26	36 ft
26+66	40 ft
32+00	32 ft
32+00	32 ft

Total this sheet = 1220 ft

**NEW CULVERTS REQUIRED**

Sta 15+04	2x2 Concrete	7.00 cu yds.
	1-2-4	8.90-7 "
	1-2-5	28 "
	Earth Excavation	1.0x14 28'
	1/4" Conc. Drop Inlet	
Sta 17+07	1-2-4 Concrete	18.5-8 cu yds.
	1-2-5	7-8 "
	Earth Excavation	10 "
Sta 20+13	12" Cor Iron Pipe	10 ft
	1-2-5 Conc Headwalls	1.5 cu yd.
Sta 26+34	2x2 Concrete	5.4
	1-2-4	5.2 cu yd
	1-2-5	6.75 "
	Earth Excavation	27 "

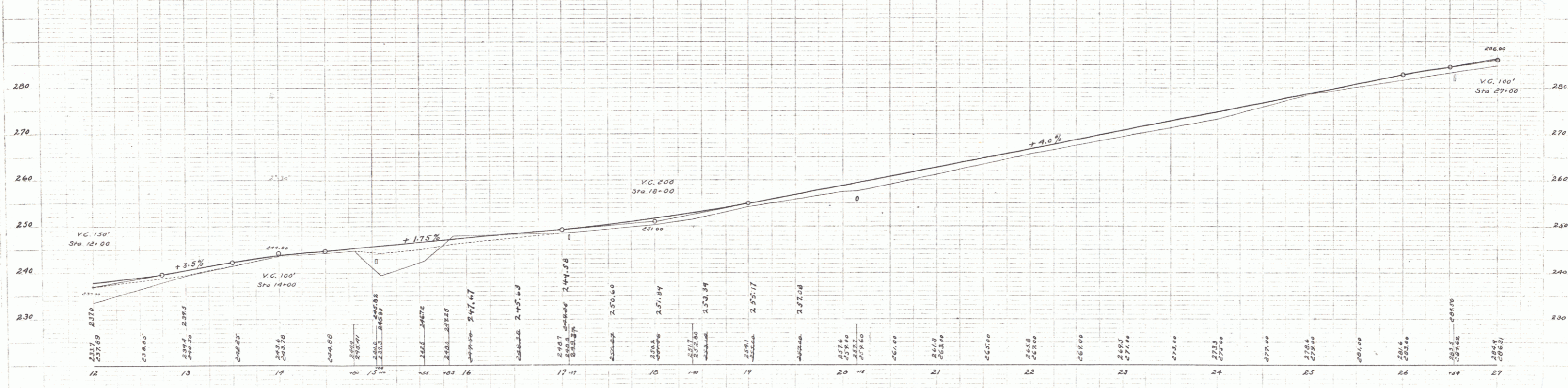
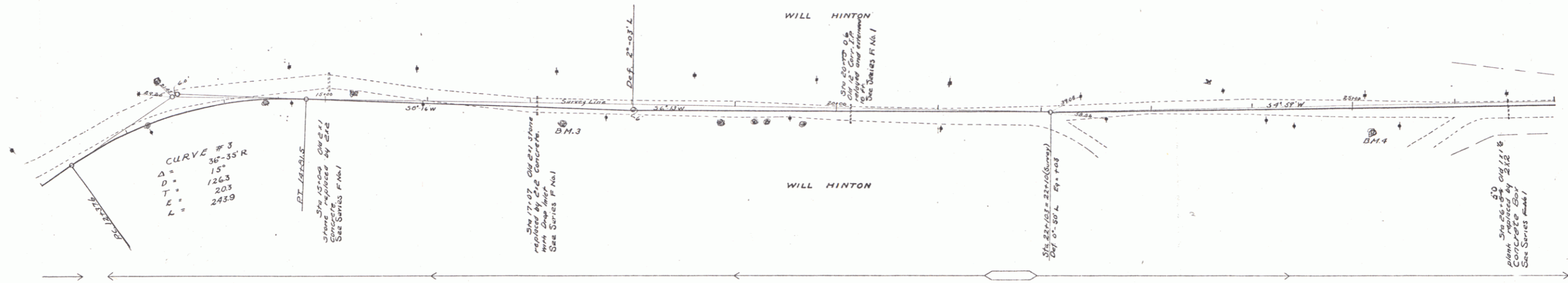
**RELAYING PIPE CULVERTS**

Sta 20+13 Old 12" Cor Iron Pipe 10 ft

**SUB BASE REQUIRED**

Sta 13+0 to Sta 14+10	length 110 ft
Sta 14+00 to Sta 15+10	length 110 ft
Sta 15+00 to Sta 22+50	length 700 ft
Sta 15+05 to Sta 27+00	length 1195 ft
Total this sheet 1225 ft	
Sta 15+30 to Sta 15+60	length 30 ft

FED. ROAD DIST. NO.	STATE	FED. AID PROJ. NO.	VISUAL FEET	SHEET NO.	TOTAL SHEETS
7	VT.	23	1225	20	20



B.M. #3 spike in 12" Maple Rt of Sta 17+31 Elev 247.48  
 B.M. #4 " " " " Sta 25+19 Elev 277.40

Series F No 49 filed  
 Spec 4 and 20