

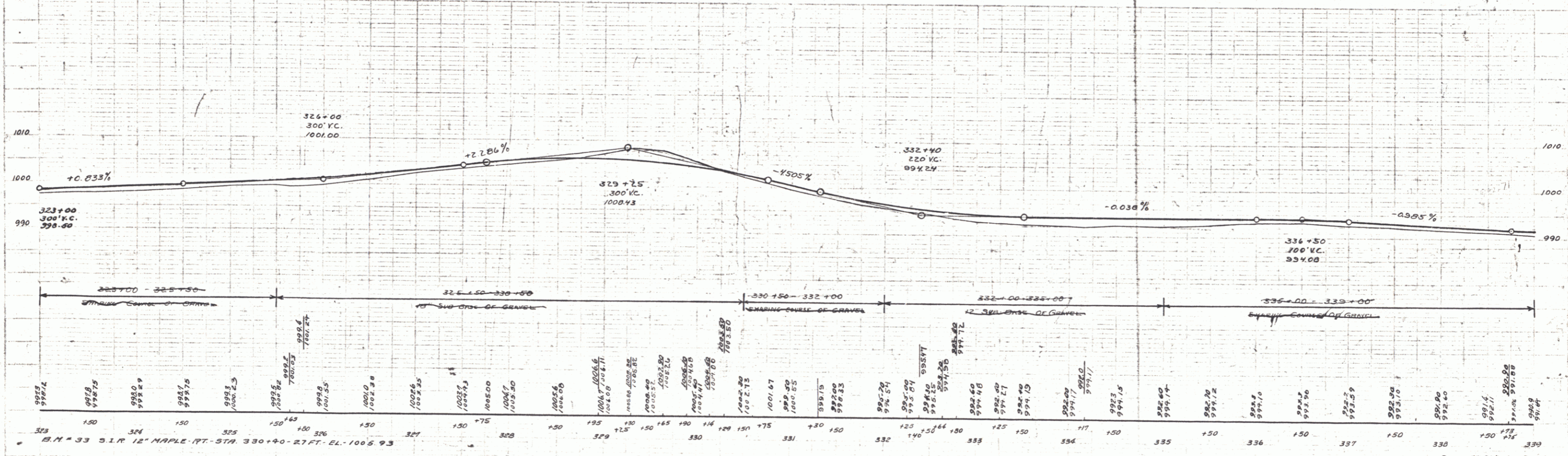
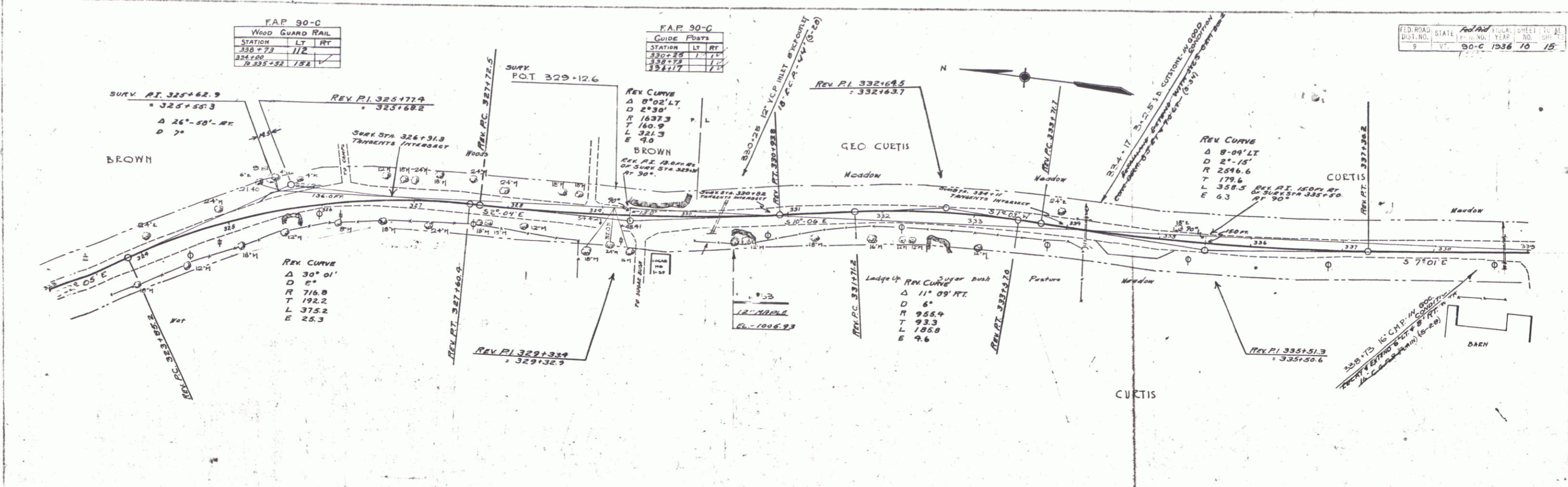
F.A.P. 90-C  
WOOD GUARD RAIL

STATION	LT	RT
325+73	1/2	
324+00		1/2
325+52	1/2	

F.A.P. 90-C  
GUIDE POSTS

STATION	LT	RT
330+25	1/2	
328+75		1/2
328+17		1/2

FED. ROAD DIST. NO.	STATE	PROJECT NO.	SHEET NO.	DATE
9	VT	90-C	10	15



323+00 300' V.C. 990.00  
326+00 300' V.C. 1001.00  
329+25 300' V.C. 1008.43  
332+40 200' V.C. 998.24  
336+50 300' V.C. 993.00

Grades: +0.83%, +2.86%, -4.50%, -0.03%, -0.95%

Stationing: 323+00, 324+00, 325+00, 326+00, 327+00, 328+00, 329+00, 330+00, 331+00, 332+00, 333+00, 334+00, 335+00, 336+00, 337+00, 338+00, 339+00

Notes: B.M. = 33 S.I.R. 12" MAPLE PT. STA. 330+40-27 FT. EL. 1005.93