

INDEX OF SHEETS

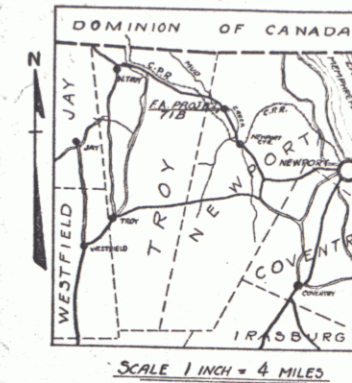
SHEET NO. 1 TITLE PAGE

- " 2 TYPICAL CROSS-SECTION OF IMPROVEMENT (24' SEWER)
- " 3 PLAN AND PROFILE STA. 0+00 TO 374.9+00
- " 4 DETAILS OF ABUTMENT
- " 5 BRIDGE SEAT DETAILS (ABUT. NO. 2, PIERS NO. 1 & 2)
- " 6 S.P. NO. 3 - PIER DETAILS - SQUARE
- " 7 S.P. NO. 4 - PIER DETAILS - SKEW
- " 8 SUPERSTRUCTURE DETAILS
- " 9 S.B. NO. 2 - TYPICAL DETAILS
- " 10 S.B. NO. 2A - TYPICAL DETAILS
- " 11 S.B. NO. 2B - TYPICAL DETAILS
- " 12 S.B. NO. 5 - CABLE RAIL
- " 13 S.B. NO. 6 - SPECIAL DETAILS
- " 14-15 CROSS SECTIONS
- " 16 SECTIONS CHANNEL EXCAVATION
- " 17 STANDARD STRUCTURES - SERIES S no. 22

STATE OF VERMONT
STATE HIGHWAY DEPARTMENT

PLAN AND PROFILE OF PROPOSED
STATE HIGHWAY
FEDERAL AID PROJECT

FED. ROAD DIST. NO.	STATE	FED. AID PROJ. NO.	FISCAL YEAR	SHEET NO.	TOTAL SHEETS
9	VT.	718	1931	1	16



TOWN OF NEWPORT *Plot # 00R198*

NEWPORT - NORTH TROY ROAD
BRIDGE OVER MUD CREEK

AND
LENGTH OF BRIDGE APPROACHES 170.9 FT = 0.032 MILES
LENGTH OF ROADWAY 729.1 FT = 0.138 MILES
TOTAL LENGTH 900 FT = 0.170 MILES

RIGHT-OF-WAY DIVISION
TOWN FILE
PERPETUAL
Town of 4105
(To Be Returned To R.O.W. Division)

APPROVED: 4/13/31

SUBMITTED BY ORDER OF THE STATE HIGHWAY BOARD
W. Elquist
COMMISSIONER OF HIGHWAYS

MP 1.118 - 0.947
B-58

RECOMMENDED
DISTRICT ENGINEER BUREAU OF PUBLIC ROADS
RECOMMENDED FOR APPROVAL
CHIEF ENGINEER BUREAU OF PUBLIC ROADS
APPROVED
DIRECTOR - BUREAU OF PUBLIC ROADS

SERIES F. No. 718 FILED
SHEET 1 OF 16

CONVENTIONAL SIGNS

- COUNTY LINE
- TOWN LINE
- FENCE WALL
- UNFENCED PROPERTY
- GUARD RAIL
- TRAVELED WAY
- RAILROAD
- RETAINING WALL
- CENTER LINE
- SURVEY LINE
- CULVERT
- DROP INLET
- TROLLEY POLE
- POWER POLE
- TELEPHONE POLE
- TREES
- HEDGE

- GROUND ELEVATION
- GRADE ELEVATION

- CURVE DATA
- DEFLECTION ANGLE
 - DEGREE OF CURVE
 - RADIUS OF CURVE
 - TANGENT DISTANCE
 - LENGTH OF CURVE
 - EXTERNAL DISTANCE
 - POINT OF INTERSECTION
 - POINT OF CURVE
 - POINT OF TANGENT
 - POINT ON TANGENT

THESE PLANS ARE SUBJECT TO SUCH REVISIONS AS MAY BE REQUIRED BY THE BUREAU OF PUBLIC ROADS OR THE CHIEF ENGINEER.

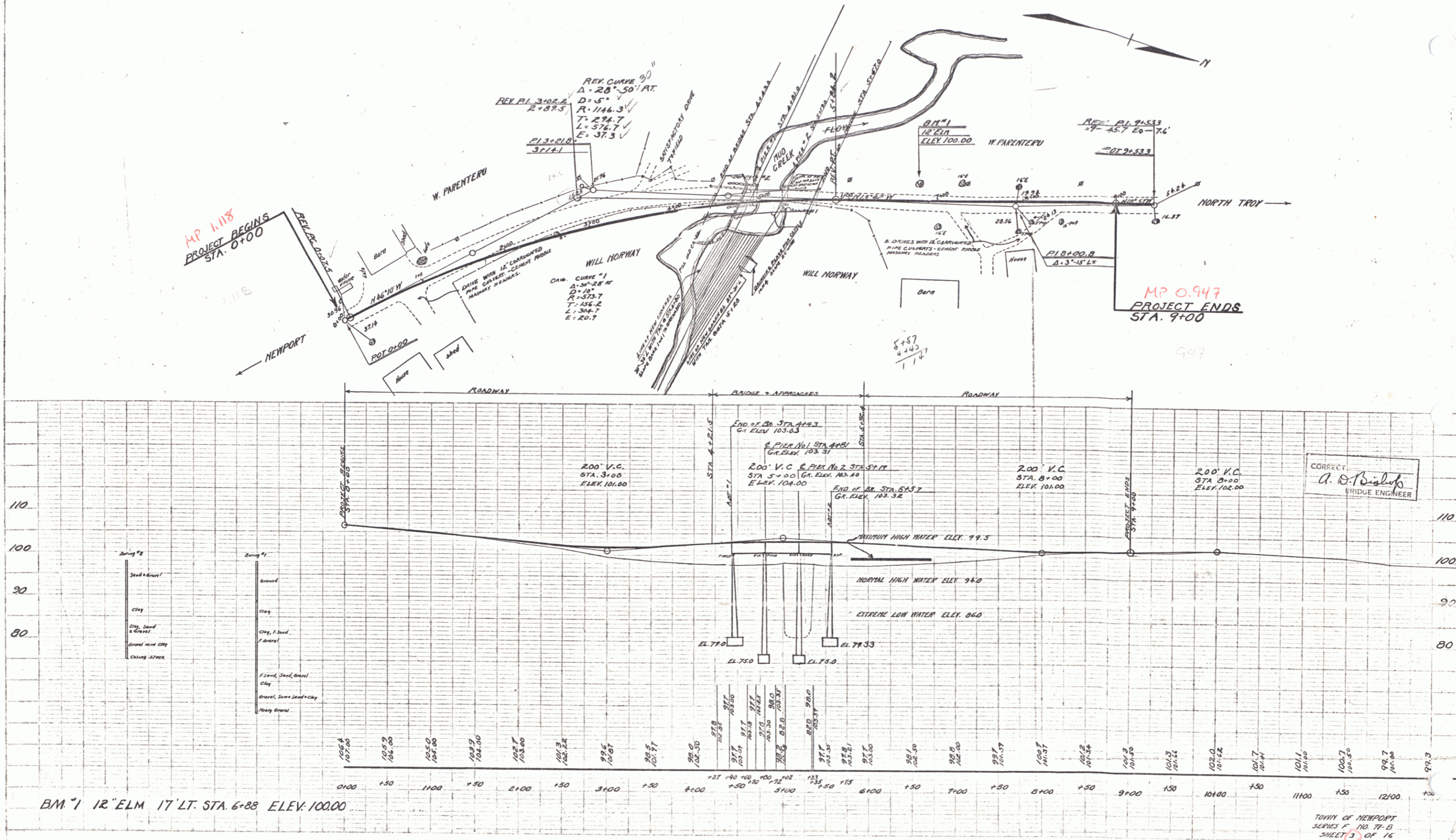
SUPPLEMENTARY DRAWING BY ENGINEERS AND ARCHITECTS, INC., N. Y.

DIST. # 9 PLANS

CABLE GUARD RAIL REQUIRED
 RIGHT STA. 3+10 - STA. 6+00 = 370' + 40' IN. = 410'
 LEFT STA. 3+85 - STA. 6+90 = 305' + 40' IN. = 345'
 TOTAL 755'

GRAVEL SURFACE COURSE
 STA. 0+00 - STA. 4+43 = 274 CU. YDS.
 STA. 5+57 - STA. 9+00 = 216 CU. YDS.
 TOTAL 490 CU. YDS.

FED. ROAD DIST. NO.	STATE	PROJECT NO.	SHEET NO.	TOTAL SHEETS
8	VT	718	133	316



H. H. BARRETT

H. H. BARRETT

CORRECT
 A. D. DeLoach
 BRIDGE ENGINEER

BM 1 12" ELM 17' LT. STA. 6+88 ELEV. 100.00

TOWNSHIP OF NEWPORT
 SERIES C. 110. 71-13
 SHEET 5 OF 16

