

INDEX OF SHEETS

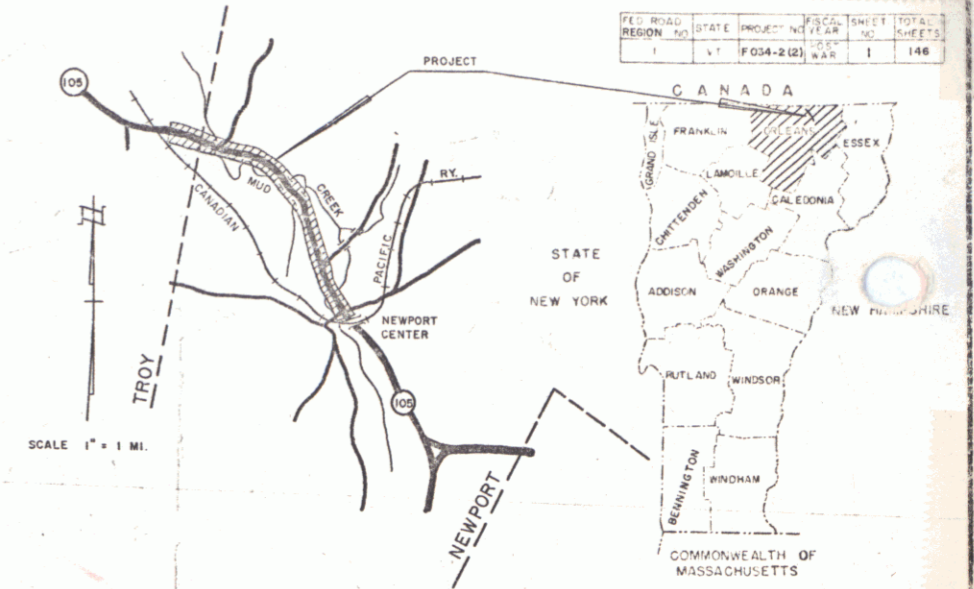
SHEET NO.	TITLE PAGE	EXTRA SHEETS
1	TYPICAL CROSS SECTION OF IMPROVEMENT. BITUMINOUS CONCRETE PAVEMENT, ITEM 361-B, MODIFIED	5A REVISED EARTHWORK SHEET
2	QUANTITY SHEET	7A REVISED EARTHWORK SHEET
3	ITEM DETAIL AND DRAINAGE SHEET.	8A-F FINAL EARTHWORK SHEETS
4	EARTHWORK SHEETS.	116A, 117A, 118A, 119A & 120A REVISED SECTIONS
5-7	EARTHWORK SUMMARY SHEET.	10 SHEETS OF STEEL PLANS
8	PLAN AND PROFILE SHEETS.	7 EXTRA X SECTION SHEETS
9-21	DETAILS OF 180" CULVERTS - STA. 96+10.	
22	PRELIMINARY INFORMATION SHEET - STA. 153+77 TO 154+10.	
23	PLAN AND ELEVATION SHEET, BRIDGE	
24	DETAILS OF ABUTMENT NO. 1.	
25	DETAILS OF ABUTMENT NO. 2.	
26	DETAILS OF SUPERSTRUCTURE.	
27	REINFORCING STEEL SCHEDULE.	
28	EARTHWORK SHEET, BRIDGE	
29	PRELIMINARY INFORMATION SHEET - STA. 163+63 TO 164+62.	
30	PLAN AND ELEVATION SHEET, BRIDGE	
31	DETAILS OF ABUTMENT NO. 1.	
32	DETAILS OF ABUTMENT NO. 2.	
33	REINFORCING STEEL SCHEDULE.	
34	PRELIMINARY INFORMATION SHEET - STA. 208+55 TO 209+09.	
35	PLAN AND ELEVATION SHEET, BRIDGE	
36	DETAILS OF SUPERSTRUCTURE.	
37	REINFORCING STEEL SCHEDULE.	
38	DETAILS OF ABUTMENT NO. 1.	
39	DETAILS OF ABUTMENT NO. 2.	
40	BRIDGE QUANTITIES AND ABUTMENT DETAILS.	
41	REINFORCING STEEL SCHEDULE.	
42	EARTHWORK SHEET, BRIDGE	
43	STANDARD DRAWING C-2 A (SIDEWALKS-DRIVE ENTRANCES)	
44	STANDARD DRAWING B-1 (BANKING TABLES).	
45	STANDARD DRAWING B-3 (TYPICAL SLOPE GRADING).	
46	STANDARD DRAWING D-8 (METAL PIPE DETAILS).	
47	STANDARD DRAWING D-9 (R.C.D.I. WITH GRATES).	
48	STANDARD DRAWING D-10 (R.C.D.I. TOP WITH GRANITE CURB).	
49	STANDARD DRAWING D-11 (DETAILS OF GRATES AND COVERS FOR USE WITH CATCH BASINS AND DRAIN INLETS).	
50	STANDARD DRAWING D-12 (HEADWALLS AND UNDERDRAIN).	
51	STANDARD DRAWING D-13 (PRECAST R.C.P.D.'S AND GRATES).	
52	STANDARD DRAWING D-14 (GUTTERS).	
53	STANDARD DRAWING G-3 (3 CABLE GUARD RAIL WITH STEEL POSTS AND ANCHORS).	
54	STANDARD DRAWING J-1 (ERECTOR OF PROJECT AND BOUNDARY MARKERS).	
55	STANDARD DRAWING RS-56-13.	
56	STANDARD DRAWING BS-56-2.	
57	STANDARD DRAWING SGB-30-59 (DETAILS OF 30' ROADWAY).	
58	STANDARD DRAWING SB-20-56 WF BM DETAILS.	
59	STANDARD DRAWING SB-9-57 DETAILS OF RAILING.	
60	STANDARD DRAWING E-1 BARRICADE, SIGNS AND LIGHTS.	
61	STANDARD DRAWING E-1 BARRICADE, SIGNS AND LIGHTS.	
62	STANDARD DRAWING E-1 BARRICADE, SIGNS AND LIGHTS.	
63-120	CROSS SECTIONS	
121-166	CHANNEL SECTIONS	

STATE OF VERMONT  
DEPARTMENT OF HIGHWAYS  
**PROPOSED IMPROVEMENT**

**TOWNS OF NEWPORT - TROY**  
COUNTY OF ORLEANS  
**NEWPORT - NORTH TROY ROAD VT. RTE. 105**

BEGINNING AT A POINT APPROXIMATELY 2.670 MILES  
SOUTHEASTERLY OF THE TROY-NEWPORT TOWN LINE  
AND EXTENDING NORTHWESTERLY 3.053 MILES.

LENGTH OF ROADWAY 15,932.8 FT. = 3.018 MILES  
LENGTH OF BRIDGES 186.0 FT. = 0.035 MILE  
LENGTH OF PROJECT 16,118.8 FT. = 3.053 MILES



ADT 1958	675 - 800
ADT 1980(EST)	1000-1225
DIV 1980	155 - 195
D	60% TO 65%
T	8%
V	50 MPH

RECORD PLANS

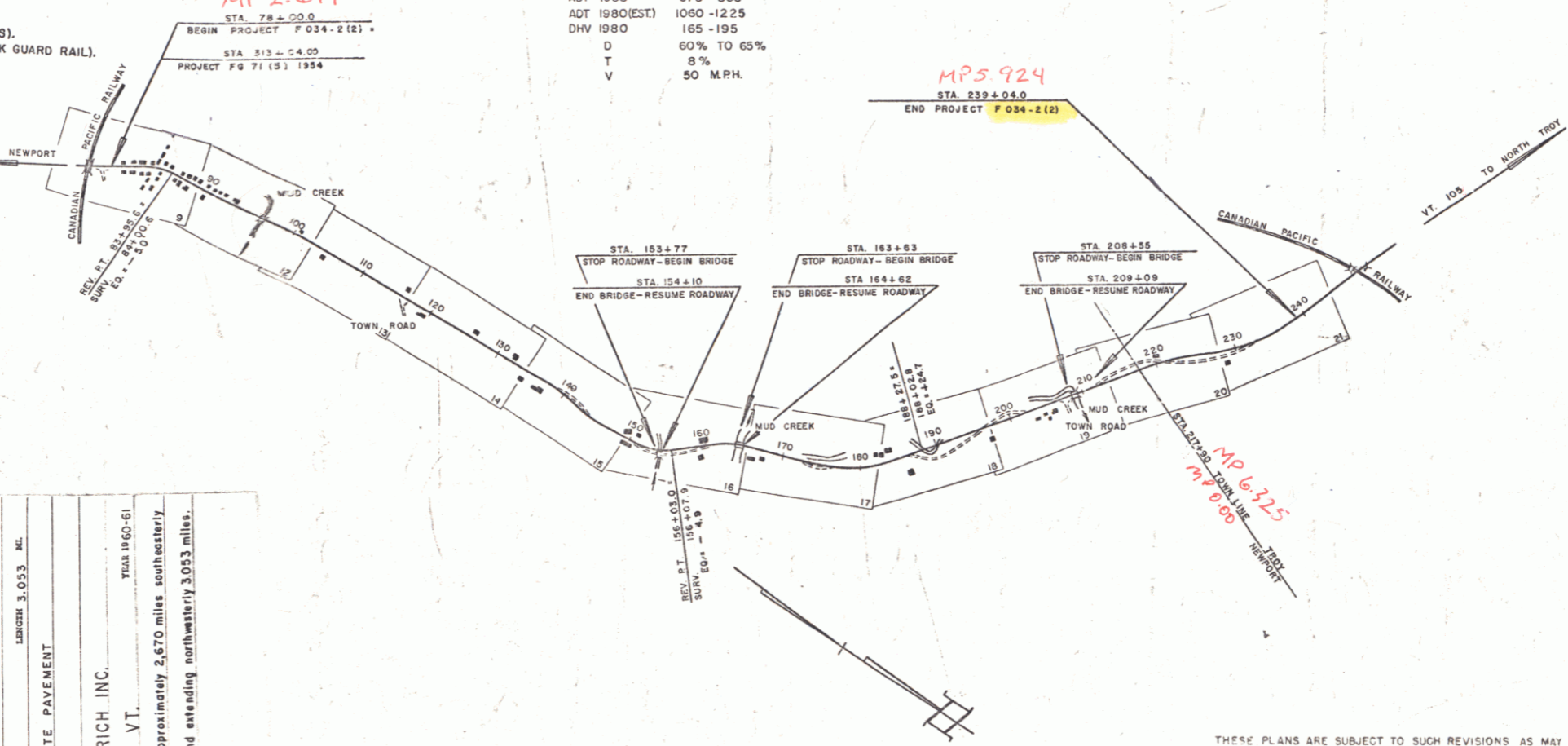
PROJECT NAME & NUMBER	TYPE PAVEMENT AREA	RECORD PLANS
NEWPORT-TROY F 034-2(2)	3" BIT. CONCRETE 41,227 S.Y.	MATERIALS

SUB-BASE OF GRAVEL - PERCEY'S PIT, CHAPUT PIT - NEWPORT, VT.  
SMITH PIT - NO. TROY, VT.  
SUB-BASE OF SAND - PERCEY'S PIT - NEWPORT, VT.  
SMITH PIT - NO. TROY, VT.

CRUSHED GRAVEL & GRAVEL FOR SHOULDERS - CALKINS PLANT - NEWPORT, VT.  
REFINED TAR & CUTBACK ASPHALT - MOBIL OIL CO. - E. PROVIDENCE, R.I.  
BITUMINOUS CONCRETE - NORTHEASTERN PAVING INC. - WESTBROOK, MAINE.  
CONCRETE CLASS "B" - ANDERSON READY MIX - WATERBURY, VT.  
REINFORCING STEEL - VT. STRUCTURAL STEEL CO. - BURLINGTON, VT.  
REINFORCING STEEL - VT. STRUCTURAL STEEL CO. - BURLINGTON, VT.  
A.C.C.S. METAL PIPE - NEW ENGLAND METAL PIPE CO. - ESSEX JCT., VT.  
THREE CABLE GUARD RAIL, STEEL MARKER & GUIDE POSTS & BRIDGE RAILING - S.T. GRISWOLD CO. INC. - ESSEX JUNCTION, VT.  
GRANITE CURB - ROCK OF AGES CORP. - BARRE, VT.

CONTRACTOR - RALPH B. GOODRICH INC.  
SO. BURLINGTON, VT.  
RES. ENG. - E. C. GLYSSON  
INSPECTOR - FRED H. REED  
RECORD PLANS - E. C. GLYSSON

CONTRACT DATED - DEC. 9, 1959.  
STARTED - JAN. 27, 1960.  
COMPLETED - AUG. 1, 1961.  
ACCEPTED - AUG. 1, 1961.



CONVENTIONAL SIGNS

R.O.W.	---
COUNTY LINE	---
TOWN LINE	---
FENCE LINE	---
STONE WALL	---
UNFENCED PROPERTY	---
GUARD RAIL	---
TRAVELED WAY	---
RAILROAD	---
RETAINING WALL	---
CENTER LINE	---
SURVEY LINE	---
CULVERT	---
DROP INLET	---
TROLLEY POLE	---
POWER POLE	---
TELEPHONE POLE	---
TREES	---
HEDGE	---

CONTRACTOR RALPH B. GOODRICH INC.  
SO. BURLINGTON, VT.  
RECORD PLANS E. C. GLYSSON  
COMPLETED AUGUST 1, 1961.

THESE PLANS ARE SUBJECT TO SUCH REVISIONS AS MAY BE  
REQUIRED BY THE BUREAU OF PUBLIC ROADS OR THE COMMISSIONER  
OF HIGHWAYS.

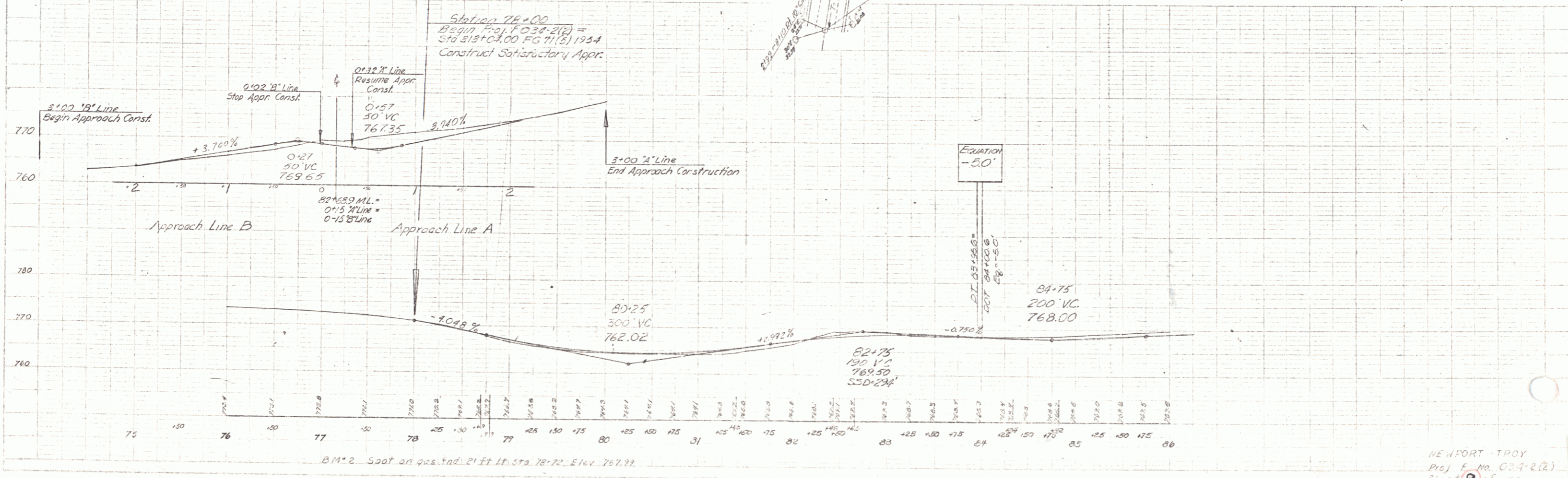
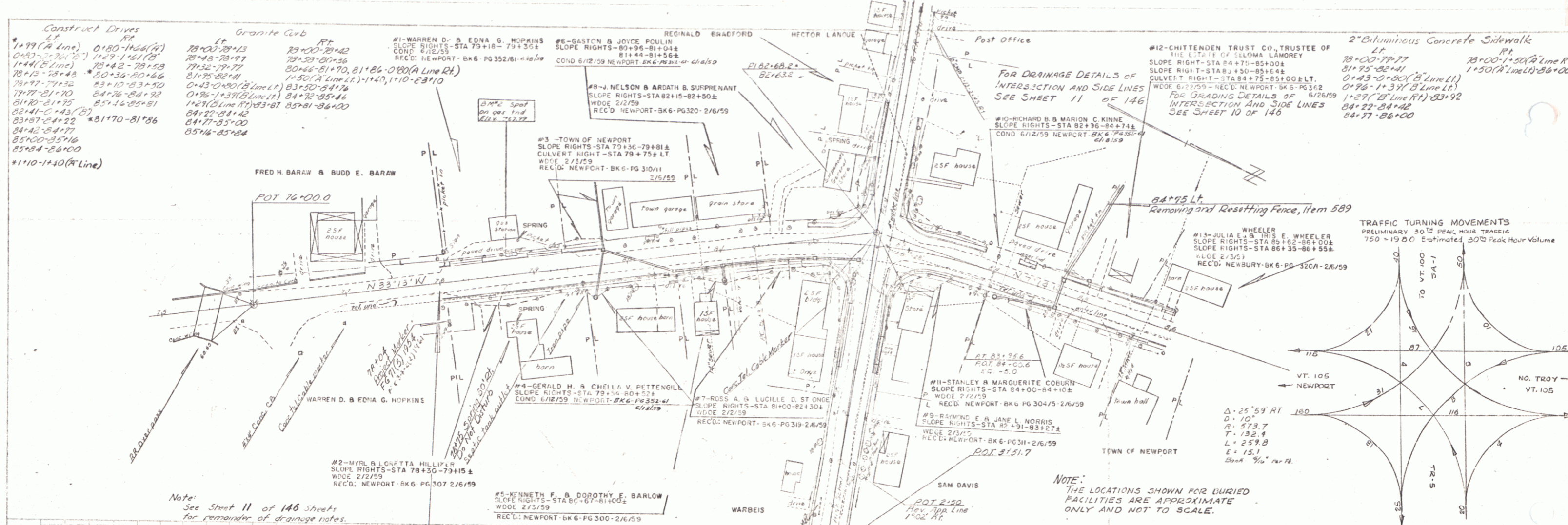
CONSTRUCTION IS TO BE CARRIED ON IN ACCORDANCE WITH  
THE PLANS AND THE STANDARD SPECIFICATIONS FOR HIGHWAY AND BRIDGE  
CONSTRUCTION OF JANUARY 1956 SUBMITTED TO THE BUREAU OF  
PUBLIC ROADS AS APPROVED JULY 5, 1956, INCLUDING ALL SUBSEQUENT  
APPROVED REVISIONS AND SUCH REVISED SPECIFICATIONS AND SPECIAL  
PROVISIONS AS ARE SUBMITTED WITH THE PLANS.

NOTE: ANY FURTHER INFORMATION CONCERNING  
FINAL QUANTITIES, AMOUNTS AND OTHER DETAILS  
RELATIVE TO THIS PROJECT MAY BE FOUND IN  
EITHER THE FIELD BOOKS OR THE ESTIMATE  
FILE.

DEPARTMENT OF COMMERCE  
BUREAU OF PUBLIC ROADS

APPROVED DATE	APPROVED DATE	APPROVED DATE	APPROVED DATE	APPROVED DATE	APPROVED DATE
SECONDARY ENGINEER	CONSTRUCTION ENGINEER	BRIDGE ENGINEER	DISTRICT ENGINEER	HIGHWAY ENGINEER	CITY ENGINEER
	Nov 21, 1958	Nov 24, 1958	12/1/58	11/21/58	Nov 24, 1958

APPROVED	DIVISION ENGINEER	DATE
PROJECT	F	NO. 034
SHEET	1	OF 146 SHEETS



Construct Drives

Lt.	Rt.
1+99 (A Line)	0180-1160 (A)
0+97-2+70 (B)	11+9-1+61 (B)
1+44 (B Line)	75+42-78+59
78+15-78+48	50+36-50+66
78+97-79+32	83+10-83+50
79+77-81+70	84+76-84+92
81+70-81+75	85+16-85+81
82+41-82+43 (B)	83+87-84+22
83+87-84+22	81+70-81+86
84+42-84+77	
85+00-85+16	
85+84-86+00	
#110-1130 (A Line)	

Granite Curb

Lt.	Rt.
78+00-78+13	79+00-79+42
78+48-78+97	79+59-80+36
79+32-79+77	80+66-81+70, 81+86-0+80 (A Line Rt.)
81+75-82+41	1+50 (A Line Lt.)
0+43-0+80 (B Line Lt.)	83+50-84+74
0+96-1+31 (B Line Lt.)	84+72-85+44
1+24 (B Line Rt.)	83+87-85+81-86+00
84+22-84+42	
84+77-85+00	
85+16-85+84	

#1-WARREN D. & EDNA G. HOPKINS  
SLOPE RIGHTS-STA 79+18-79+36  
COND. 6/12/59  
REC'D. NEWPORT-BK6-PG 352/61-4/26/59

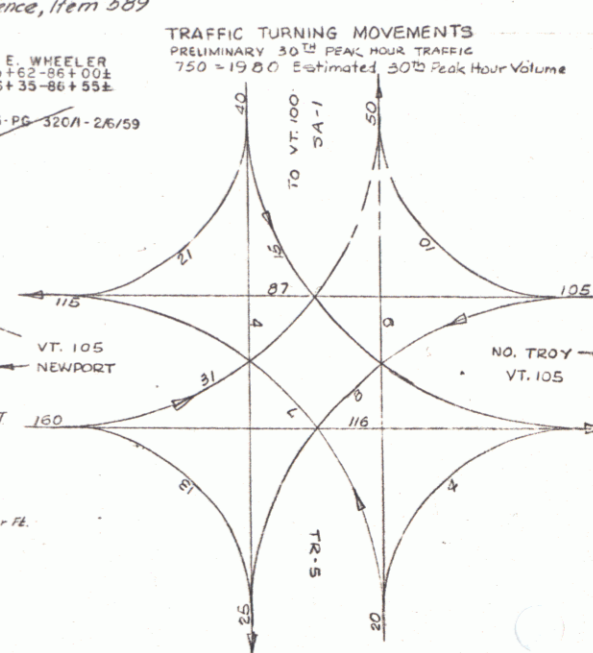
#6-GASTON & JOICE POLLIN REGINALD BRADFORD  
SLOPE RIGHTS-80+96-81+04  
COND. 6/12/59 NEWPORT-BK6-PG 352/61-4/26/59

#8-J. NELSON & ARDATH & SURPRENANT  
SLOPE RIGHTS-STA 82+15-82+50  
COND. 6/12/59 NEWPORT-BK6-PG 320-2/6/59

#3-TOWN OF NEWPORT  
SLOPE RIGHTS-STA 79+36-79+81  
CULVERT RIGHT-STA 79+75± LT  
COND. 6/12/59 NEWPORT-BK6-PG 310/11  
REC'D. 2/2/59

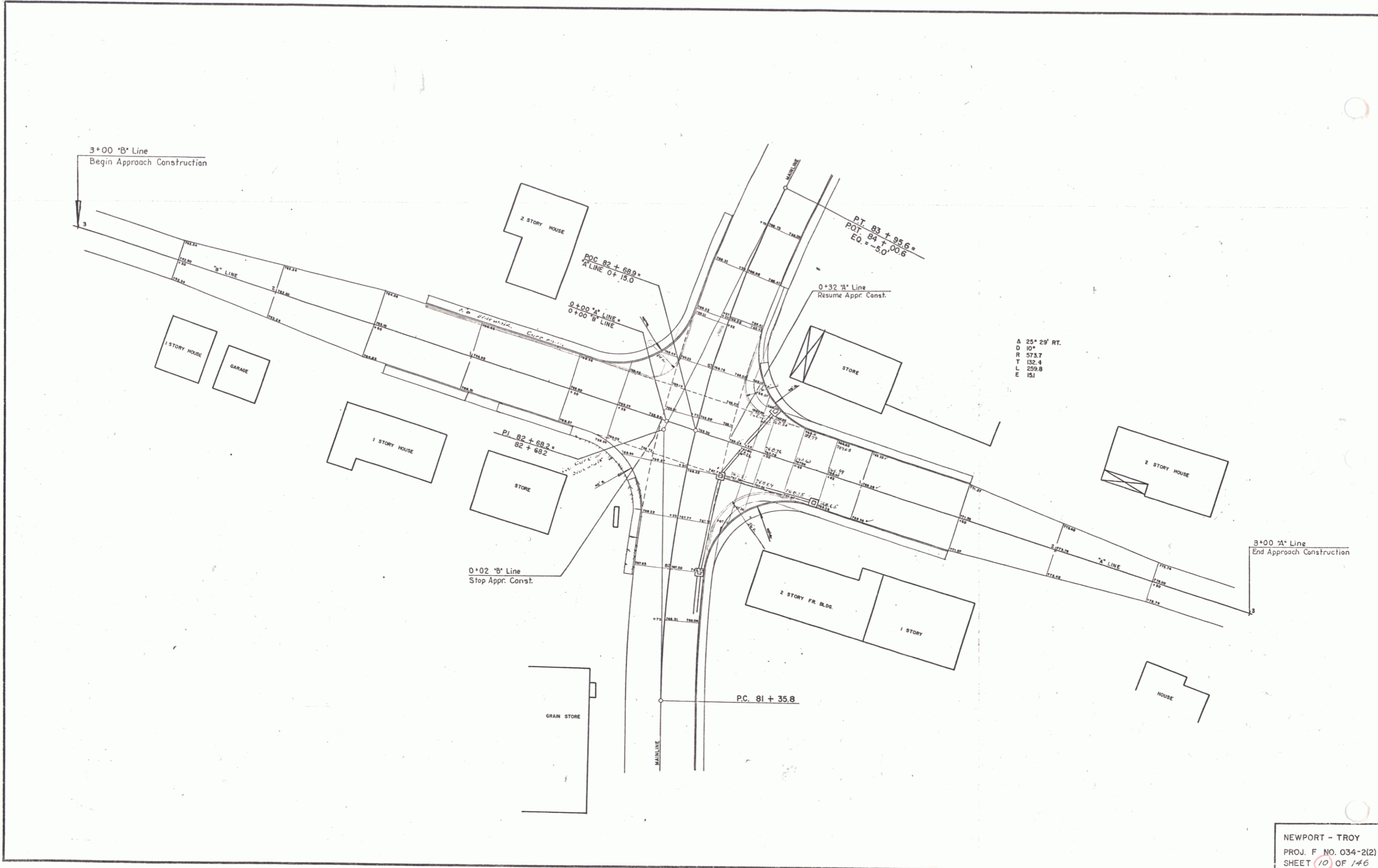
#12-CHITTENDEN TRUST CO., TRUSTEE OF THE ESTATE OF SLOMA LAMOREY  
SLOPE RIGHT-STA 84+71-85+00  
SLOPE RIGHT-STA 83+30-85+64  
CULVERT RIGHT-STA 84+75-85+00 E.L.T.  
COND. 6/12/59 - REC'D. NEWPORT-BK6-PG 312  
REC'D. 6/12/59 NEWPORT-BK6-PG 312

2" Bituminous Concrete Sidewalk  
Lt. Rt.  
78+00-79+77 78+00-1+50 (A Line Rt.)  
81+93-82+41 1+50 (A Line Lt.)  
81+93-82+41 1+50 (A Line Lt.)  
0+96-1+31 (B Line Lt.)  
1+24 (B Line Rt.)  
83+87-84+22  
84+22-84+42  
84+77-86+00



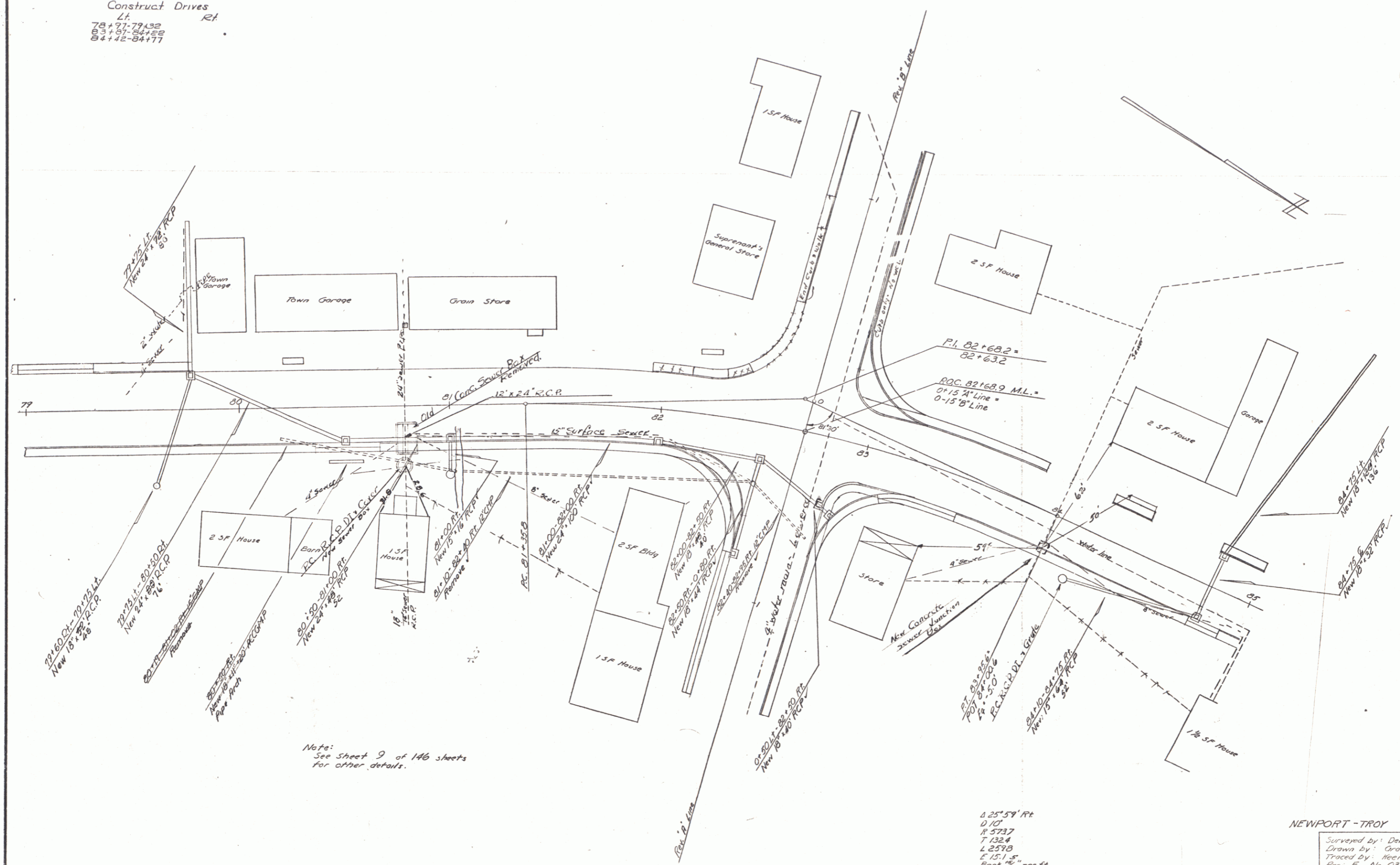
As Issued 12-27 12-27

As Issued 12-27 12-27



NEWPORT - TROY  
 PROJ. F. NO. 034-2(2)  
 SHEET 10 OF 146

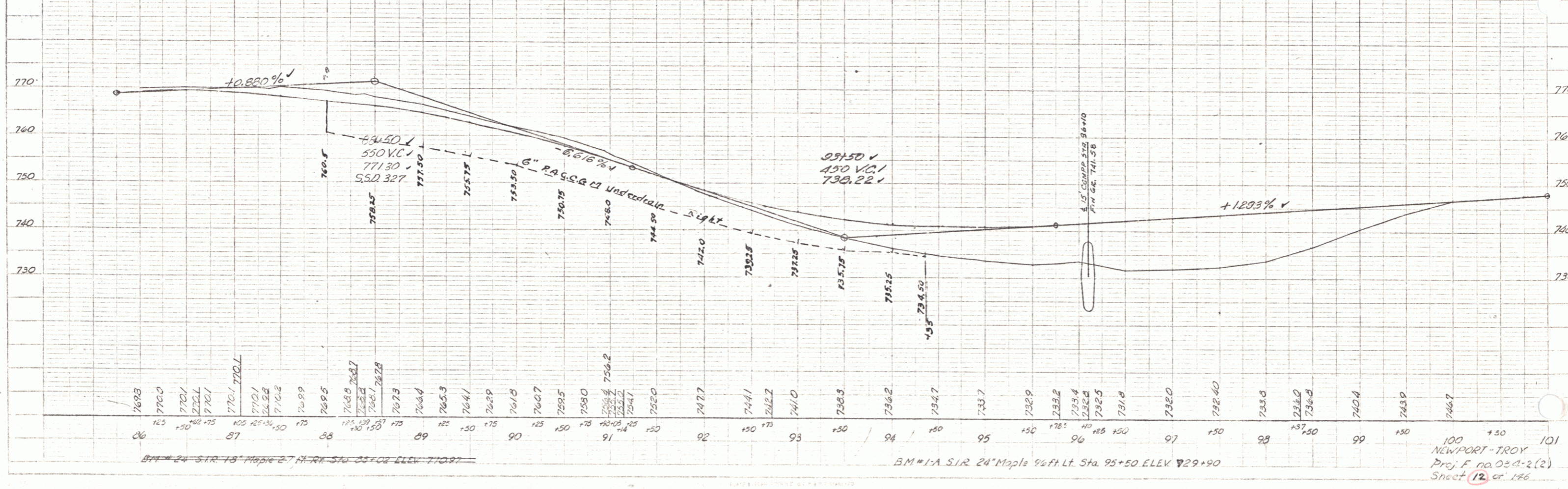
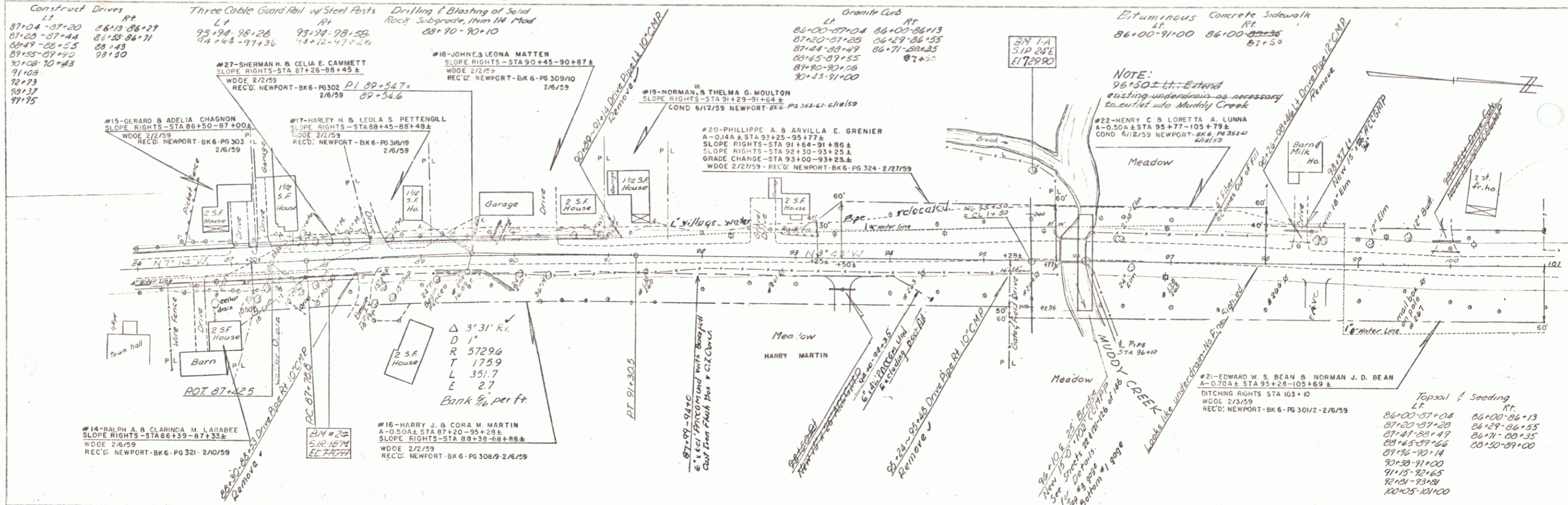
Construct Drives  
 Lt. Rt.  
 78+77-79+32  
 82+01-84+52  
 84+42-84+77



Note:  
 See sheet 9 of 146 sheets  
 for other details.

425' 59" Ft  
 0.101  
 1.5737  
 7.1324  
 1.2578  
 1.1511 s  
 Bank 1/4" per ft

NEWPORT - TROY  
 Surveyed by: Delano  
 Drawn by: Grady  
 Traced by: Heine  
 Proj. No. 034-2(2)  
 Sheet (11) of 146



PLAN  
 DELANEY  
 12-57

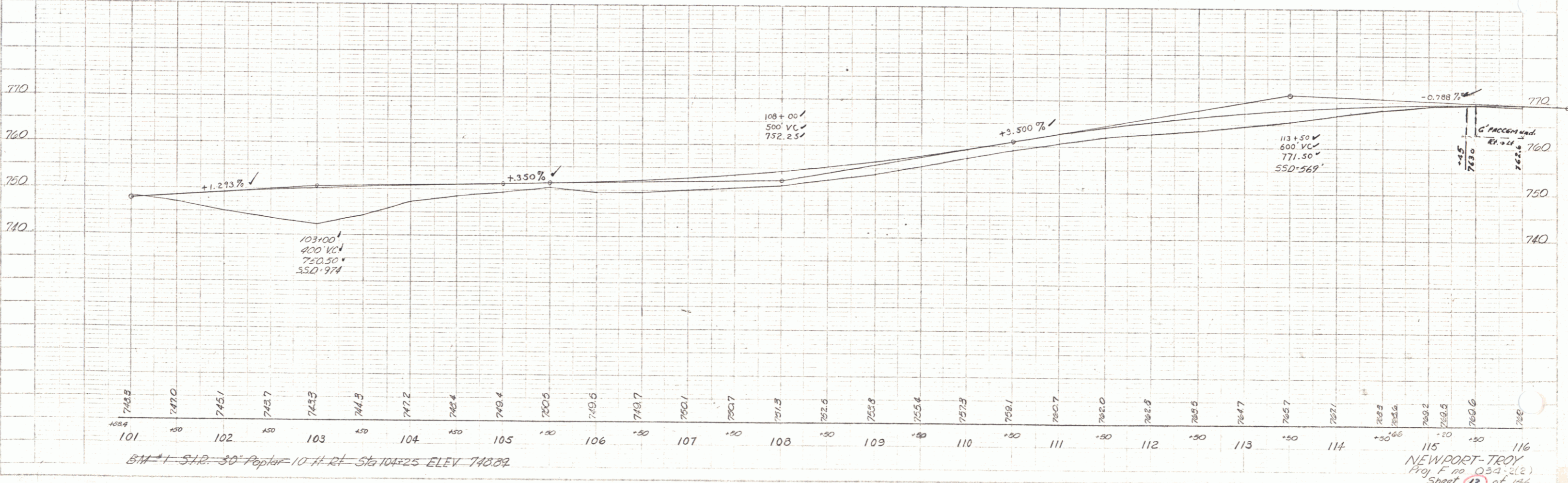
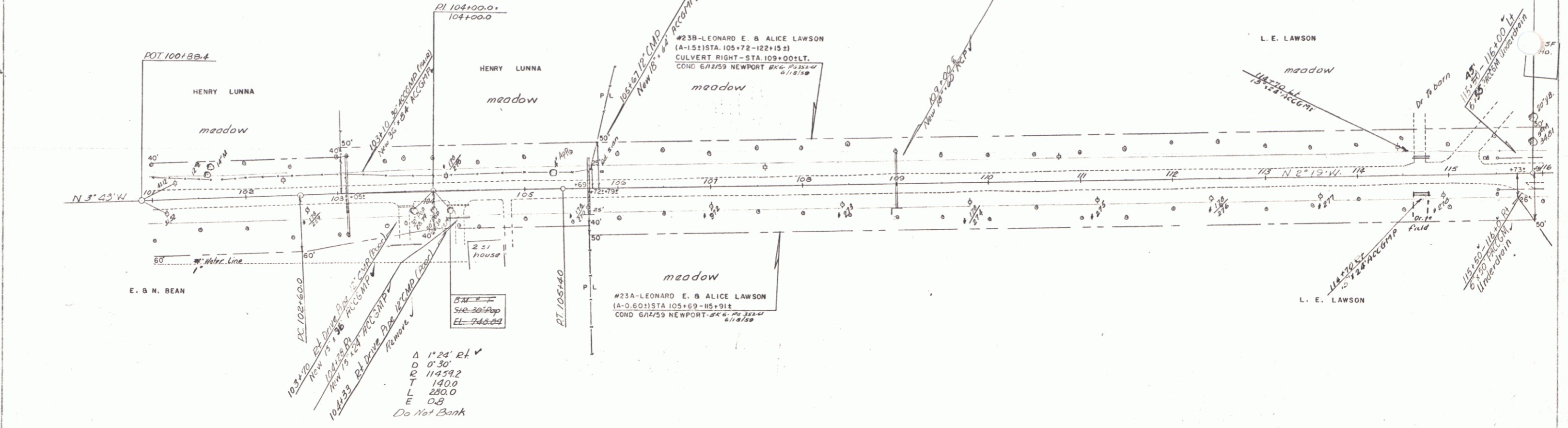
PLAN  
 MOONEY  
 12-57

Construct Drives  
 LT 114+66 103+70  
 RT 115+20 104+20  
 105+50

Three Cable Guard Rail w/ Steel Posts  
 LT 102+25-103+05 102+40-103+50  
 RT

Topsoil & Seeding  
 LT 115+30-116+00 104+35-104+75  
 RT

PLAN  
 DATE 8/1/59  
 DRAWN BY  
 CHECKED BY  
 PROJECT NO. 8779  
 SHEET NO. 13



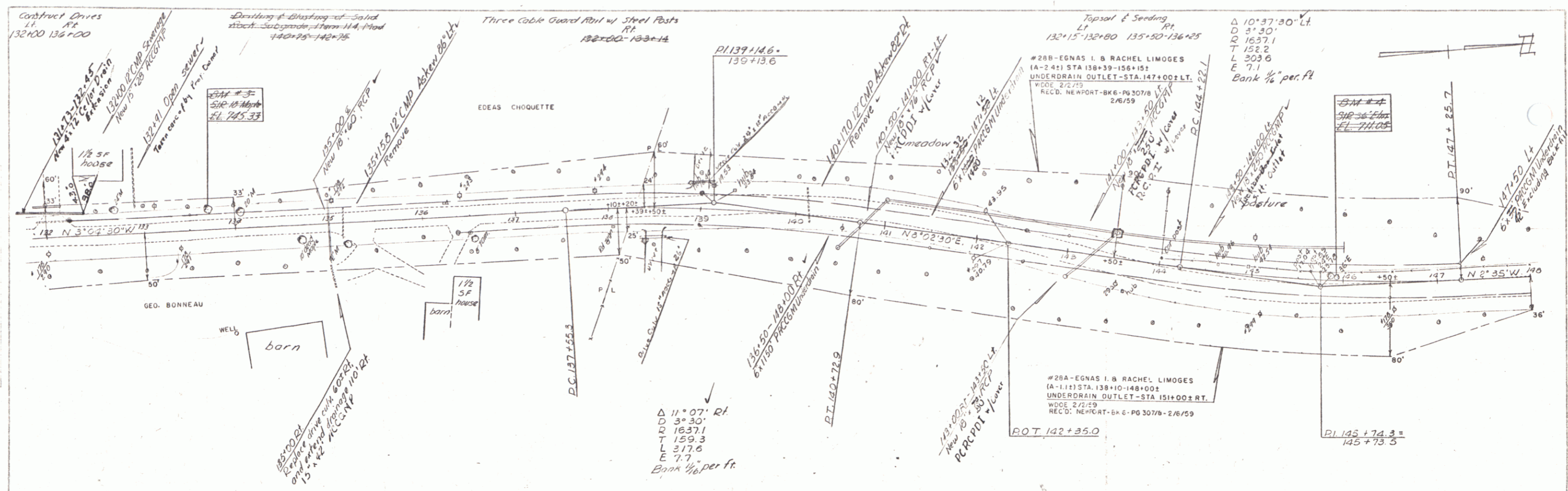
PROFILE  
 DATE 8/1/59  
 DRAWN BY  
 CHECKED BY  
 PROJECT NO. 8779  
 SHEET NO. 13

BM 1-512-30 Poplar 10 ft RT Sta 104+25 ELEV 743.89

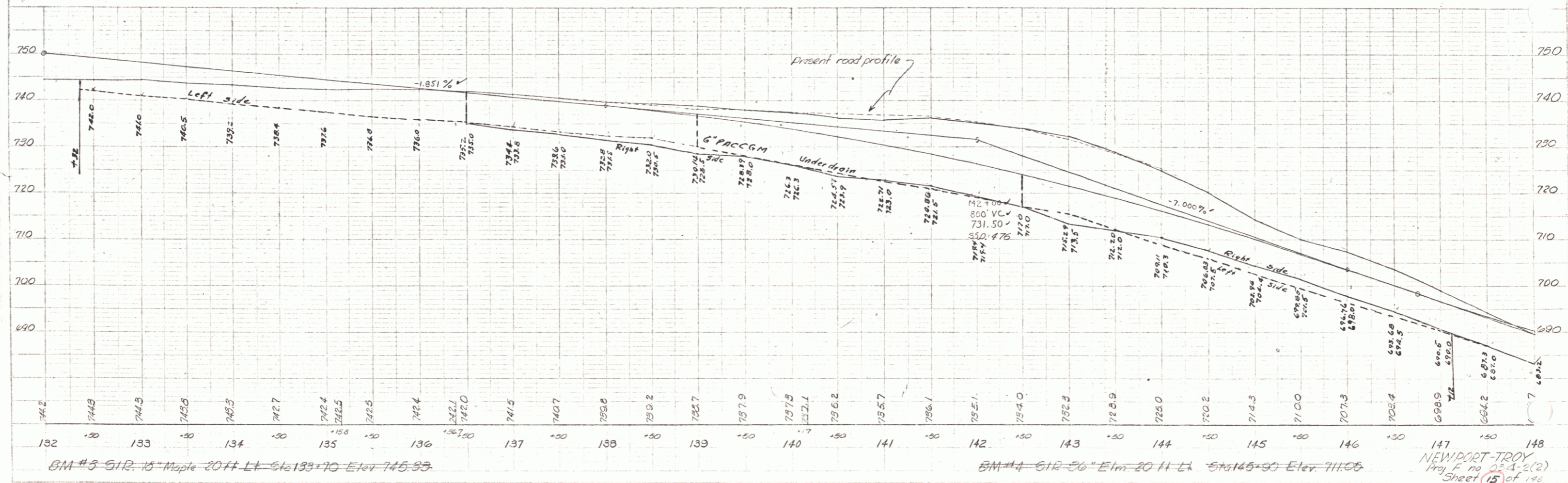
NEWPORT-TROY  
 Proj. F. No. 034-2(2)  
 Sheet 13 of 146



PLAN  
Dulano  
7-57



Bryant  
7-57



BM #3 512-15 Maple 20 ft Lt Sta 133+70 Elev 745.89

BM #4 612-56 Elm 20 ft Lt Sta 145+90 Elev 711.05

NEWPORT-TROY  
Proj F no 02-A-2(2)  
Sheet 15 of 16

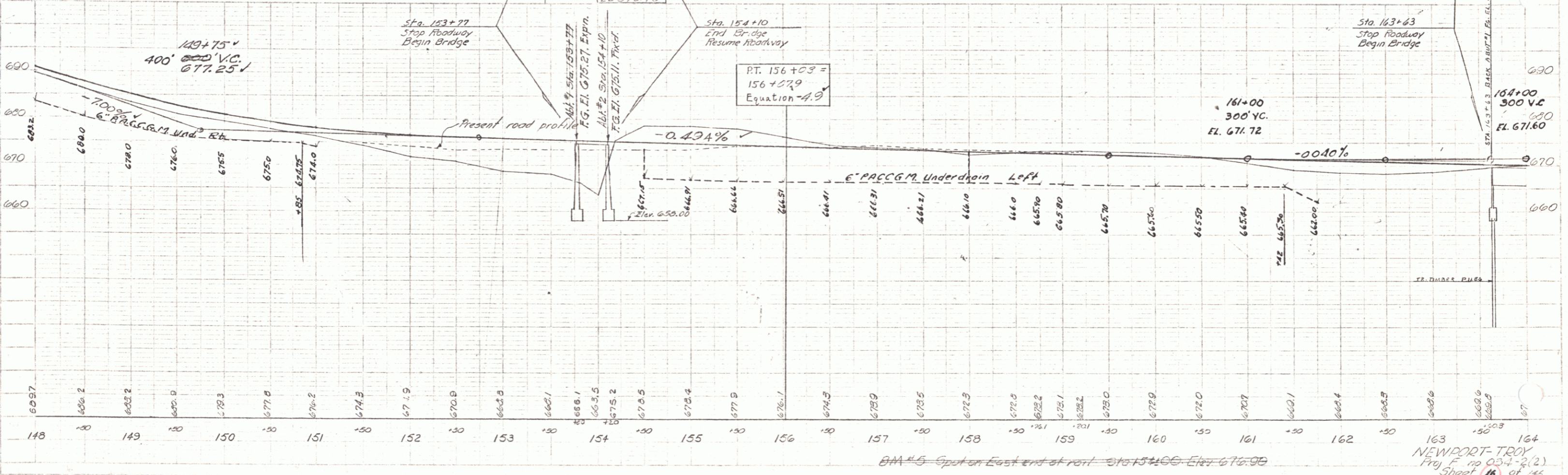
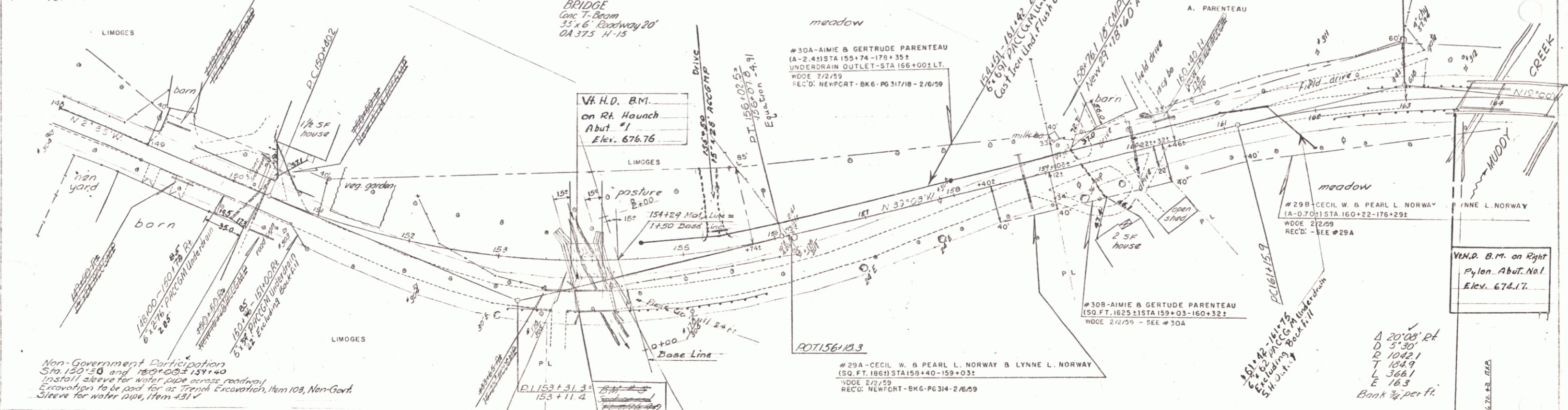
8

Construct Drives  
 Lt. Rt.  
 149+26 149+15  
 150+50 149+50  
 150+25 150+50  
 160+40 153+60  
 161+35 156+00  
 156+00 159+50  
 161+00

Three Cable Guard Rail w/ Steel Posts  
 Lt. Rt.  
 153+24 - 153+77  
 161+43 - 163+27  
 158+15 - 158+35  
 162+50 - 163+00

Plank Guard Rail  
 W/ Preservative  
 Treatment  
 Rt. 152+75  
 Rt. 155+75  
 Rt. 154+30

Topsoil & Seeding  
 Lt. Rt.  
 149+20-180+40 150+00-160+20



3-5B  
 Martin

3-5B  
 Martin

B.M. 45 Spot on East end of rd. Sta 154+00 Elev. 676.98

NEWPORT-TROY  
 Proj. F. no 03-4-2(2)  
 Sheet 16 of 145

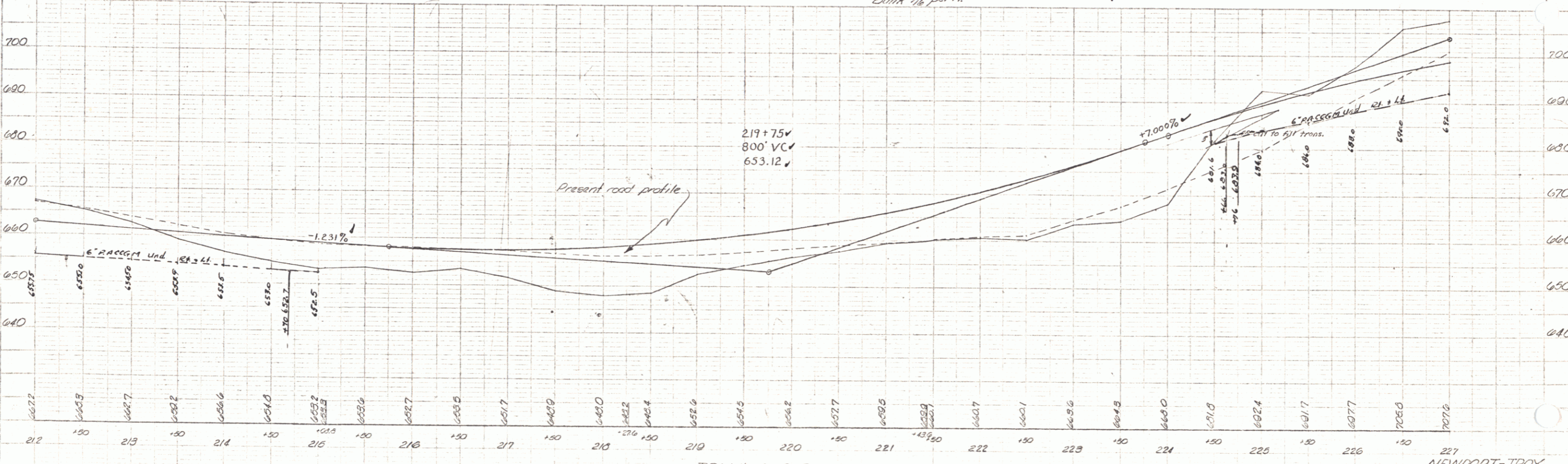
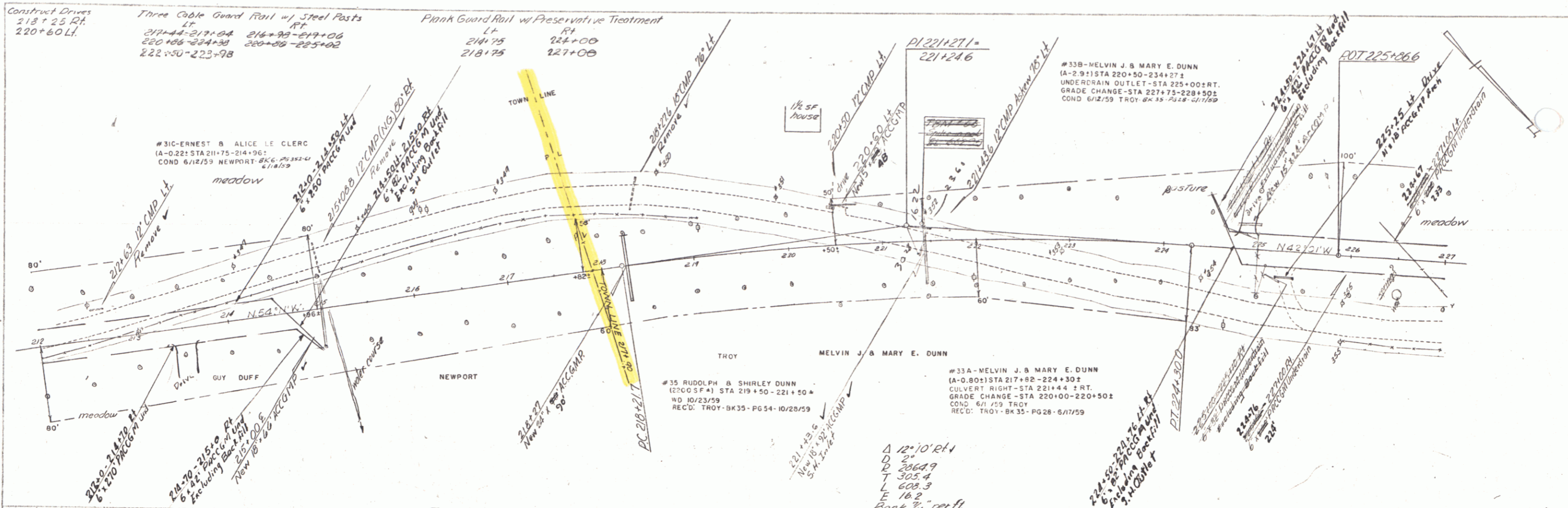






Delano 7-57

Bryant 7-57

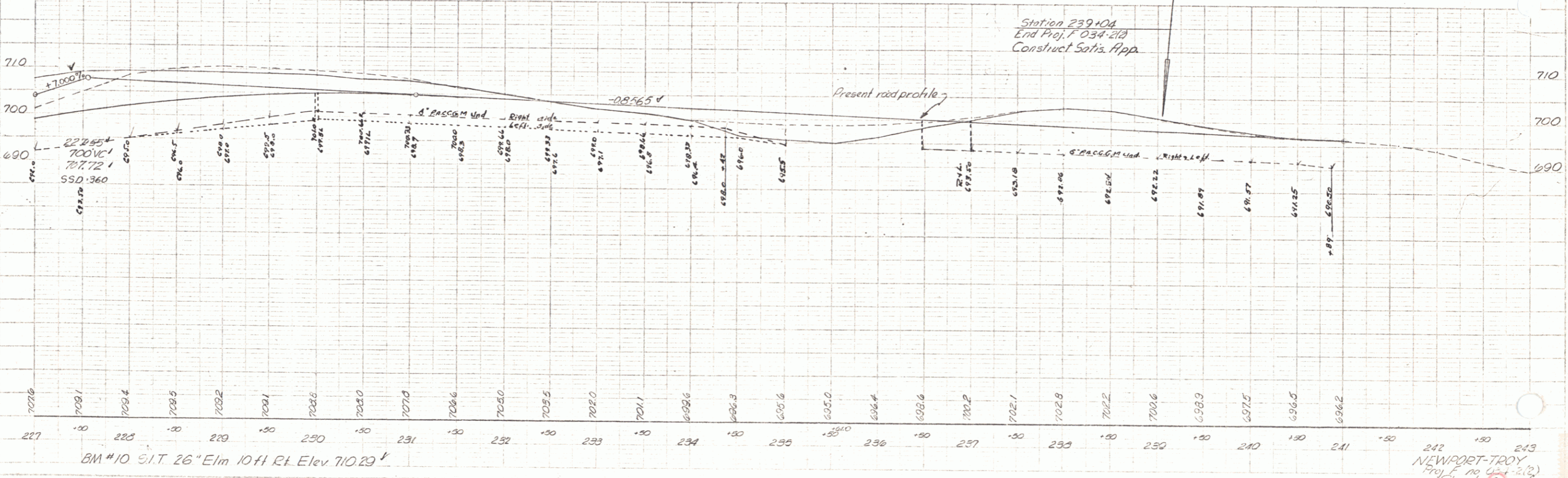
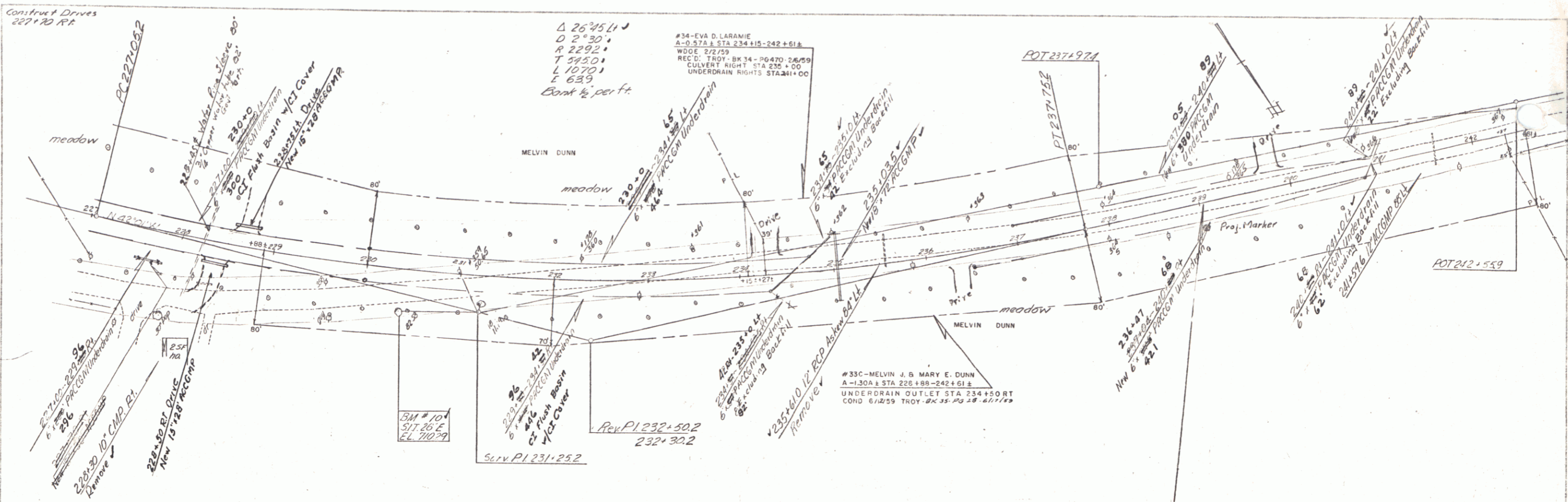


~~FBA 466-514-Flay-6-29-95~~

NEWPORT-TROY  
 Proj. No. 024-2(2)  
 Sheet 20 of 145

Delano 7-57

Bryant 7-57



BM #10 S/T 26" Elm 10 ft Rt. Elev 710.23

NEWPORT-TROY  
Proj. F no 034-213  
Sheet 21 of 145