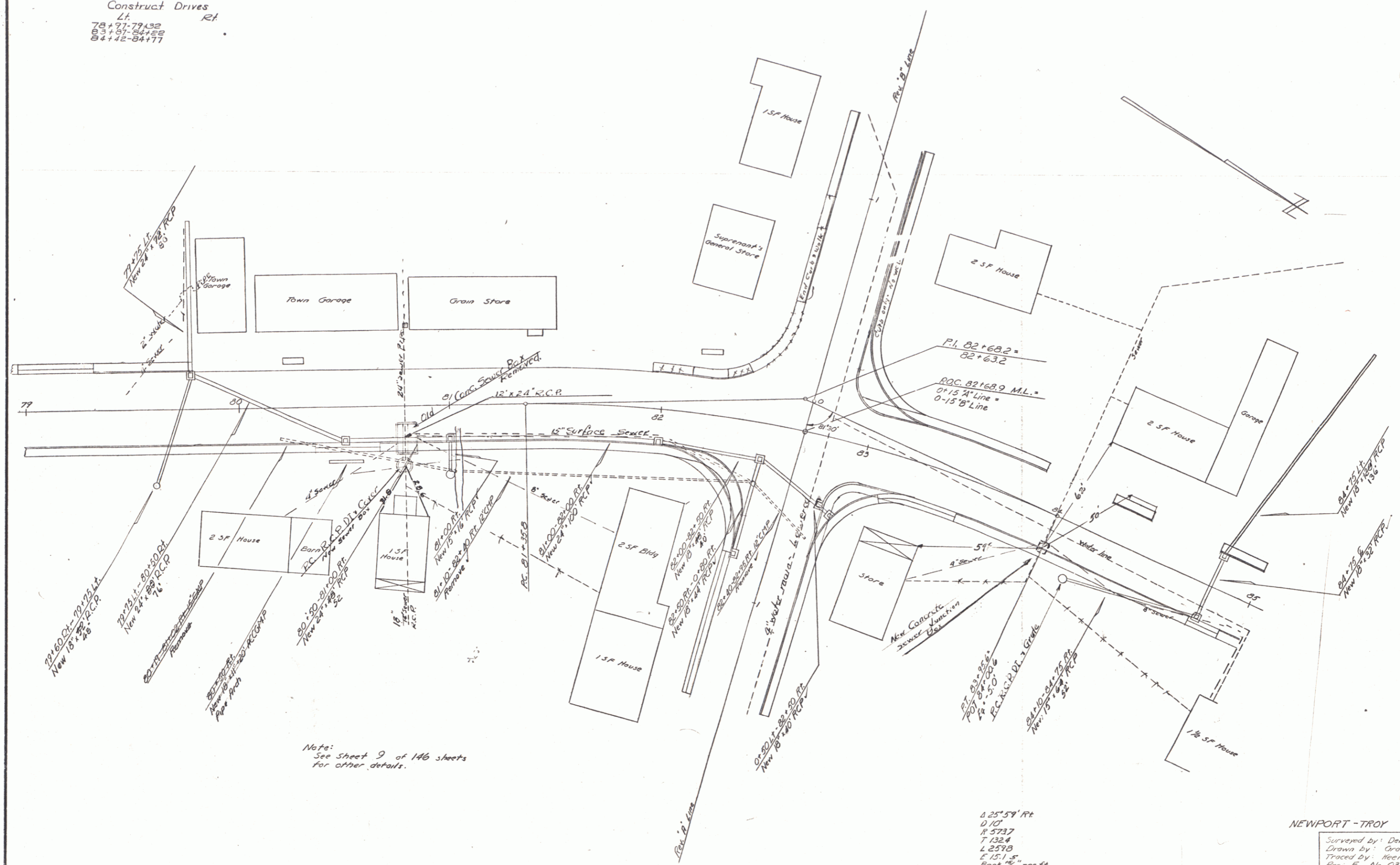


Construct Drives  
 Lt. Rt.  
 78+77-79+32  
 82+01-84+52  
 84+42-84+77



Note:  
 See sheet 9 of 146 sheets  
 for other details.

425' 59" Ft  
 0.101  
 1.5737  
 7.1324  
 1.2578  
 1.1511 s  
 Bank 1/4" per ft

NEWPORT - TROY  
 Surveyed by: Delano  
 Drawn by: Grady  
 Traced by: Heine  
 Proj. F. No. 034-2(2)  
 Sheet (11) of 146